



GENERAL NOTES

- 1. ALL CONSTRUCTION TO CONFORM TO MARICOPA ASSOCIATION OF GOVERNMENTS STANDARD SPECIFICATIONS AND DETAILS UNLESS SPECIFICALLY MODIFIED ON THE PLANS.
- 2. IT IS THE SOLE RESPONSIBILITY OF THE CONTRACTOR TO OBTAIN, AT HIS OWN EXPENSE, SUCH PERMITS AS ARE REQUIRED FROM THE APPROPRIATE AGENCIES.
- 3. ANY WORK PERFORMED WITHOUT THE KNOWLEDGE AND APPROVAL OF THE CITY ENGINEER AND/OR ALL WORK MATERIALS NOT IN CONFORMANCE WITH THE PLANS AND SPECIFICATIONS IS SUBJECT TO REMOVAL AND REPLACEMENT AT THE CONTRACTOR'S EXPENSE.
- 4. THE CONTRACTOR SHALL KEEP SUITABLE EQUIPMENT ON HAND AT THE JOBSITE FOR MAINTENANCE DUST CONTROL, AND SHALL CONTROL DUST AS DIRECTED BY THE APPROPRIATE AGENCIES.
- 5. A THOROUGH ATTEMPT HAS BEEN MADE TO SHOW THE LOCATION OF ALL UNDERGROUND OBSTRUCTION AND UTILITY LINES IN THE WORK AREA. THE ENGINEER AND THE CITY OF SEDONA WILL NOT GUARANTEE ANY LOCATIONS OR ELEVATIONS OF EXISTING UNDERGROUND UTILITIES SHOWN ON THESE PLANS. THE CONTRACTOR SHALL BE RESPONSIBLE AND SHALL NOT BE RELIEVED OF RESPONSIBILITY FOR MAKING A COMPLETE AND ACCURATE ON-SITE DETERMINATION OF THE LOCATIONS OF ALL UTILITIES, STRUCTURES, AND FIELD CONDITIONS WHICH MAY AFFECT THE PROGRESS OF THE WORK. THE CONTRACTOR SHALL BE RESPONSIBLE FOR ANY DAMAGE TO STRUCTURES AND UTILITIES ENCOUNTERED DURING CONSTRUCTION AND SHALL FIELD EXPOSE EXISTING UNDERGROUND UTILITIES PRIOR TO TRENCHING IN THEIR VICINITY.
- 6. ALL FRAMES, COVERS, VALVE BOXES, MANHOLES, ETC., SHALL BE ADJUSTED TO FINISHED ASPHALT GRADE AFTER PLACEMENT OF SURFACE COURSE BY THE CONTRACTOR AS PER MAG STANDARD DETAILS.
- 7. THE CONTRACTOR SHALL BE RESPONSIBLE FOR COORDINATING THE RELOCATION OF ALL UTILITIES, POWER POLES, ETC., THAT MAY BE NECESSARY.
- 8. BASE COURSE WILL NOT BE PLACED ON SUBGRADE UNTIL SUBGRADE REQUIREMENTS HAVE BEEN COMPLETED AND ACCEPTED BY THE CITY ENGINEER.
- 9. NO PAVING CONSTRUCTION SHALL BE STARTED UNTIL ALL UNDERGROUND UTILITIES WITHIN THE ROADWAY PRISM ARE COMPLETED.
- 10. THE CONTRACTOR IS REQUIRED TO CONTACT BLUE STAKE (811) TWO WORKING DAYS (48 HOURS) PRIOR TO COMMENCEMENT OF CONSTRUCTION. THE APPROPRIATE UTILITY COMPANIES SHALL BE NOTIFIED BY THE CONTRACTOR PRIOR TO ANY CONSTRUCTION.
- 11. BACKFILL COMPACTION SHALL BE TYPE 1 (MAG SECTION 601) UNLESS OTHERWISE NOTED.
- 12. ALL ASPHALT SHALL BE 19 MM MIX DESIGN AS PER CITY OF SEDONA. ALL MILLING PER CITY OF SEDONA.
- 13. CONTRACTOR/DEVELOPER SHALL WARRANT ALL WORK FOR A MINIMUM OF A TWO YEAR PERIOD.
- 14. THE CONTRACTOR SHALL GUARD AGAINST DAMAGE DURING CONSTRUCTION TO EXISTING PROPERTIES AND IMPROVEMENTS. ANY ITEMS DAMAGED BY CONSTRUCTION SHALL BE REPLACED IN KIND OR BETTER AT CONTRACTOR'S EXPENSE.
- 15. CONSTRUCTION STAKING SHALL BE BY THE CONTRACTOR WITH CONTROL PROVIDED BY THE DESIGN ENGINEER WHO STAMPED THE PLANS.
- 16. CONTRACTOR SHALL BE RESPONSIBLE FOR CONSTRUCTION SURVEYING AND LAYOUT. ANY QUESTIONS SHALL BE ADDRESSED TO THE DESIGN ENGINEER WHO STAMPED THE PLANS.
- 17. THE CITY OF SEDONA MAY ORDER ANY OR ALL WORKMANSHIP AND MATERIALS TO BE TESTED ACCORDING TO APPLICABLE STANDARDS.
- 18. THE CONTRACTOR WILL BE RESPONSIBLE FOR ALL REWORK AND/OR REMOVAL AND REPLACEMENT OF ALL MATERIALS AND/OR WORKMANSHIP REPRESENTED BY A FAILING TEST.
- 19. APPROVAL OF A PORTION OF THE WORK IN PROGRESS DOES NOT GUARANTEE ITS FINAL ACCEPTANCE. TESTING AND EVALUATION MAY CONTINUE UNTIL WRITTEN FINAL ACCEPTANCE OF A COMPLETE AND WORKABLE UNIT.
- 20. THE CITY OF SEDONA MAY SUSPEND THE WORK BY WRITTEN NOTICE WHEN, IN ITS JUDGEMENT, PROGRESS IS UNSATISFACTORY, WORK BEING DONE IS UNAUTHORIZED OR DEFECTIVE, WEATHER CONDITIONS ARE UNSUITABLE OR THERE IS A DANGER TO THE PUBLIC HEALTH OR SAFETY.
- 21. STREET AND TRAFFIC SIGNS WILL BE RELOCATED BY THE CONTRACTOR IF NECESSARY AT THE DIRECTION OF THE CITY OF SEDONA.
- 22. ACCEPTANCE OF THE COMPLETED PAVING STRUCTURE WILL NOT BE GIVEN UNTIL REPRODUCIBLE "AS-BUILT" PLANS HAVE BEEN SUBMITTED BY THE PROJECT ENGINEER OR CONTRACTOR, IF CONTRACTOR STAKED, AND APPROVED BY THE CITY ENGINEER AND YAVAPAI COUNTY.
- 23. EDGES OF CONCRETE STRUCTURES TO HAVE A 3/4" CHAMFER.
- 24. CONCRETE SURFACES TO HAVE A BROOM FINISH UNLESS OTHERWISE NOTED ON THE PLANS.
- 25. ALL CONCRETE TO BE 4000 P.S.I., CLASS 'A' PORTLAND CEMENT CONCRETE WITH FIBER MESH UNLESS OTHERWISE SPECIFIED ON PLANS.
- 26. ALL EXPANSION JOINTS TO BE SEALED WITH 1/2" EXPANSION JOINT, PREFORMED JOINT FILLER AND SEALER IN ACCORDANCE WITH MAG SPECIFICATION 729.
- 27. ALL PCC CONCRETE THAT WILL ABUT ASPHALT PAVING SHALL BE PLACED AND ALLOWED TO CURE UNTIL DESIGN STRENGTH IS MET, OR A MINIMUM OF 72 HOURS PRIOR TO PAVING OF ROADS.
- 28. THE CONTRACTOR SHALL PROVIDE ADEQUATE MEANS FOR CLEANING TRUCKS AND/OR OTHER EQUIPMENT OF MUD PRIOR TO ENTERING PUBLIC STREETS, AND IT IS THE CONTRACTOR'S RESPONSIBILITY TO CLEAN STREETS, OF ALL DUST, AND TAKE WHATEVER MEASURES ARE NECESSARY TO INSURE THAT ALL ROADS ARE MAINTAINED IN A CLEAN, MUD AND DUST FREE CONDITION AT ALL TIMES.

PAVING AND DRAINAGE PLAN GENERAL NOTES

- 1. ALL CONSTRUCTION TO CONFORM TO MARICOPA ASSOCIATION OF GOVERNMENTS STANDARD SPECIFICATIONS AND DETAILS UNLESS SPECIFICALLY MODIFIED ON THE PLANS.
- 2. CITY OF SEDONA PUBLIC WORKS DEPARTMENT PERMIT WILL BE REQUIRED FOR ALL OFF-SITE CONSTRUCTION AND CONSTRUCTION WITHIN PUBLIC EASEMENTS.
- 3. IT IS THE SOLE RESPONSIBILITY OF THE CONTRACTOR TO OBTAIN, AT HIS OWN EXPENSE, PERMITS FROM THE APPROPRIATE AGENCY.
- 4. WORK PERFORMED WITHOUT THE APPROVAL OF THE CITY ENGINEER AND/OR ALL WORK MATERIALS NOT IN CONFORMANCE WITH THE PLANS AND SPECIFICATIONS IS SUBJECT TO REMOVAL AND REPLACEMENT AT THE CONTRACTOR'S EXPENSE.

DESIGN ENGINEER'S NOTES

- 1. THE CONTRACTOR SHALL MAKE NO CLAIM AGAINST THE OWNER, THE DESIGN ENGINEER OR SURVEYOR REGARDING INACCURACY OF CONSTRUCTION STAKES SET FORTH BY THE DESIGN ENGINEER OR SURVEYOR, UNLESS ALL SURVEY STAKES SET BY THE DESIGN ENGINEER ARE MAINTAINED INTACT AND CAN BE VERIFIED AS TO THEIR ORIGIN. IF, IN THE OPINION OF THE DESIGN ENGINEER, THE STAKES ARE NOT MAINTAINED INTACT AND CANNOT BE VERIFIED AS TO THEIR ORIGIN, ANY REMEDIAL WORK REQUIRED TO CORRECT ANY ITEM, SHALL BE PERFORMED AT THE SOLE EXPENSE OF THE RESPONSIBLE CONTRACTOR OR SUBCONTRACTOR.
- 2. NOTHING CONTAINED IN THE CONTRACT DOCUMENTS SHALL CREATE, NOR SHALL BE CONSTRUED TO CREATE, ANY CONTRACTUAL RELATIONSHIP BETWEEN THE DESIGN ENGINEER AND THE CONTRACTOR OR ANY SUBCONTRACTOR.
- 3. THE DESIGN ENGINEER SHALL NOT BE RESPONSIBLE FOR CONSTRUCTION MEANS, METHODS, TECHNIQUES, SEQUENCES OR PROCEDURES OR FOR SAFETY PRECAUTIONS OR PROGRAMS UTILIZED IN CONNECTION WITH THE WORK. THE DESIGN ENGINEER WILL NOT BE RESPONSIBLE FOR THE CONTRACTOR'S FAILURE TO CARRY OUT THE WORK IN ACCORDANCE WITH THE CONTRACT DOCUMENTS.
- 4. THE DESIGN ENGINEER MAKES NO REPRESENTATION OR GUARANTEE REGARDING EARTHWORK QUANTITIES OR THAT THE EARTHWORK FOR THIS PROJECT WILL BALANCE DUE TO THE VARYING FIELD CONDITIONS, CHANGING SOIL TYPES, ALLOWABLE CONSTRUCTION TOLERANCES AND CONSTRUCTION METHODS THAT ARE BEYOND THE CONTROL OF THE DESIGN ENGINEER.
- 6. PRIOR TO BIDDING THE WORK, THE CONTRACTOR SHALL THOROUGHLY SATISFY HIMSELF AS TO THE ACTUAL CONDITIONS, EARTHWORK QUANTITIES, AND REQUIREMENTS OF WORK AND EXCESS OR DEFICIENCY IN EARTHWORK QUANTITIES, IF ANY. NO CLAIM SHALL BE MADE AGAINST THE OWNER/DEVELOPER OR DESIGN ENGINEER FOR ANY EXCESS OR DEFICIENCY THEREIN, ACTUAL OR RELATIVE.

EARTHWORK NOTES

- 1. ALL VOLUMES ARE RAW AND DO NOT INCLUDE SPOILS FROM UTILITY TRENCHES.
- 2. THE ENGINEER MAKES NO REPRESENTATION OR GUARANTEE REGARDING EARTHWORK QUANTITIES OR THAT THE EARTHWORK FOR THIS PROJECT WILL BALANCE DUE TO THE VARYING FIELD CONDITIONS, CHANGING SOIL TYPES, ALLOWABLE CONSTRUCTION TOLERANCES AND CONSTRUCTION METHODS THAT ARE BEYOND THE CONTROL OF THE ENGINEER.
- 3. PRIOR TO BIDDING THE WORK, THE CONTRACTOR SHALL THOROUGHLY SATISFY HIMSELF AS TO THE ACTUAL CONDITIONS, EARTHWORK QUANTITIES, AND REQUIREMENTS OF WORK AND EXCESS OR DEFICIENCY IN EARTHWORK QUANTITIES, IF ANY. NO CLAIM SHALL BE MADE AGAINST THE OWNER OR ENGINEER FOR ANY EXCESS OR DEFICIENCY THEREIN, ACTUAL OR RELATIVE.

ENGINEERS NOTES

- 1. THE CONTRACTOR IS TO COMPLY WITH ALL LOCAL, STATE, AND FEDERAL LAWS AND REGULATIONS APPLICABLE TO THE CONSTRUCTION COVERED BY THESE PLANS.
- 2. THE CONTRACTOR IS RESPONSIBLE FOR OBTAINING AND COMPLYING WITH ALL LOCAL, STATE, AND FEDERAL PERMITS REQUIRED TO COMPLETE ALL WORK COVERED BY THESE PLANS.
- 3. THE QUANTITIES AND SITE CONDITIONS DEPICTED IN THESE PLANS ARE FOR INFORMATIONAL PURPOSES ONLY AND ARE SUBJECT TO ERROR AND OMISSION. CONTRACTORS SHALL SATISFY THEMSELVES AS TO ACTUAL QUANTITIES AND SITE CONDITIONS PRIOR TO BIDDING THE WORK FOR THE CONSTRUCTION COVERED BY THESE PLANS.
- 4. A REASONABLE EFFORT HAS BEEN MADE TO SHOW THE LOCATIONS OF EXISTING UNDERGROUND FACILITIES AND UTILITIES IN THE CONSTRUCTION AREA. THE CONTRACTOR IS RESPONSIBLE FOR ANY DAMAGE TO UTILITIES AND/OR FACILITIES CAUSED DURING THEIR CONSTRUCTION OPERATIONS. THE CONTRACTOR SHALL CALL FOR BLUE STAKE (811) PRIOR TO ANY EXCAVATION.
- 5. THE CONTRACTOR IS RESPONSIBLE FOR ALL COORDINATION OF CONSTRUCTION AFFECTING UTILITIES AND THE COORDINATION OF ANY NECESSARY UTILITY RELOCATION WORK.
- 6. THE CONTRACTOR IS TO VERIFY THE LOCATION AND THE ELEVATIONS OF ALL EXISTING UTILITIES AT POINTS FOR TIE-IN PRIOR TO COMMENCING ANY NEW CONSTRUCTION. SHOULD ANY LOCATION OR ELEVATION DIFFER FROM THAT SHOWN ON THESE PLANS, THE CONTRACTOR SHALL CONTACT THE OWNER'S AGENT.
- 7. THESE PLANS ARE SUBJECT TO THE INTERPRETATION OF INTENT BY THE ENGINEER. ALL QUESTIONS REGARDING THESE PLANS SHALL BE PRESENTED TO THE ENGINEER. ANYONE WHO TAKES UPON THEMSELVES THE INTERPRETATION OF THE DRAWINGS OR MAKES REVISIONS TO THEM WITHOUT CONFERRING WITH THE DESIGN ENGINEER SHALL BE RESPONSIBLE FOR THE CONSEQUENCES THEREOF.
- 8. THE FINAL CONSTRUCTION AS-BUILTS MUST BE CERTIFIED BY AN ENGINEER LICENSED IN THE STATE OF ARIZONA.
- 9. THE CONTRACTOR SHALL MAKE NO CLAIM AGAINST THE OWNER, THE ENGINEER OR SURVEYOR REGARDING INACCURACY OF CONSTRUCTION STAKES SET FORTH BY THE ENGINEER OR SURVEYOR, UNLESS ALL SURVEY STAKES SET BY THE ENGINEER OR SURVEYOR ARE MAINTAINED INTACT AND CAN BE VERIFIED AS TO THEIR ORIGIN. IF, IN THE OPINION OF THE ENGINEER OR SURVEYOR, THE STAKES ARE NOT MAINTAINED INTACT AND CANNOT BE VERIFIED AS TO THEIR ORIGIN, ANY REMEDIAL WORK REQUIRED TO CORRECT ANY ITEM, SHALL BE PERFORMED AT THE SOLE EXPENSE OF THE RESPONSIBLE CONTRACTOR OR SUBCONTRACTOR.
- 10. NOTHING CONTAINED IN THE CONTRACT DOCUMENTS SHALL CREATE, NOR SHALL BE CONSTRUED TO CREATE, ANY CONTRACTUAL RELATIONSHIP BETWEEN THE ENGINEER AND THE CONTRACTOR OR ANY SUBCONTRACTOR.
- 11. THE ENGINEER SHALL NOT BE RESPONSIBLE FOR CONSTRUCTION MEANS, METHODS, TECHNIQUES, SEQUENCES OR PROCEDURES OR FOR SAFETY PRECAUTIONS OR PROGRAMS UTILIZED IN CONNECTION WITH THE WORK. THE ENGINEER WILL NOT BE RESPONSIBLE FOR THE CONTRACTOR'S FAILURE TO CARRY OUT THE WORK IN ACCORDANCE WITH THE CONTRACT DOCUMENTS.

ABBREVIATION LEGEND

±	APPROXIMATE LOCATION AND/OR ELEVATION, MUST BE FIELD VERIFIED
A.B.C.	AGGREGATE BASE COURSE
ACRE	ARIZONA DEPARTMENT OF TRANSPORTATION
ADOT	ARIZONA PUBLIC SERVICE
APPROX.	ASPHALT-RUBBER ASPHALTIC CONCRETE FRICTION COURSE
ARACFC	AIR RELEASE VALVE ASSEMBLY
ARV	BUTTERFLY VALVE BOX & COVER
BF.V.B.&C.	BOOK
BK	BEGIN CURB RETURN
BCR	BUILDING
BLDG	BOLLARD
BOL	BEGINNING OF PROJECT
BOP	BEGIN PAVEMENT RETURN
BPR	CONCRETE ELEVATION
C	CENTRIFUGALLY CAST FIBERGLASS REINFORCED
CCFRMP	POLYMER MORTAR PIPE
C.O.P.	CITY OF PRESCOTT
COP	CITY OF PRESCOTT
CB	CATCH BASIN
CE	CORRUGATED METAL PIPE
CMP	CLEAN OUT
CO	CONCRETE
CONC.	CUBIC YARDS
CY	DOUBLE
DBL	DETAIL
DET.	DRAINAGE MANHOLE
DNIH	DIAMETER
DIAM.	DUCTILE IRON PIPE
DIP	DRIVEWAY
DVWY	END CURB RETURN
ECR	EFFLUENT
EFF	ELEVATION
EL	ELECTRIC
ELEC	ENGINEERED
ENG.	EDGE OF GRAVEL
EOG	EDGE OF PAVEMENT
EOP	EDGE OF SHOULDER
EOS	END PAVEMENT RETURN
EPR	EASEMENT
ESMT	EXISTING
EX	FINISH GRADE ELEVATION
FG	FIRE HYDRANT
FH	FIBER OPTIC
FIBER	FINISH
FIN.	FLOW LINE ELEVATION
FL	FENCE
FNC	100-YEAR FLOODPLAIN
FP(100)	100-YEAR FLOODWAY
FW(100)	FUTURE
FUT.	GATE VALVE BOX & COVER
G.V.B.&C.	TOP OF GRATE ELEVATION
GE	GUY WIRE
GW	HORIZONTAL
HORIZ.	HEADWALL
HW	INVERT ELEVATION
IE	IRRIGATION MAIN
IRR	LENGTH
L	LENGTH
LEN	LINEAR FEET
LF	LOW PRESSURE SEWER
LPS	LENGTH OF RESTRAIN
LR	LUMP SUM
LS	LEFT
LT	MARICOPA ASSOCIATION OF GOVERNMENTS
MAG	MAXIMUM
MAX.	MAILBOX POST
MBX	MANHOLE
MH	MINIMUM
MIN.	MILES PER HOUR
MPH	NUMBER
NO.	OVERHEAD POWER
OP	POINT OF CURVATURE
PC	PEDESTAL
PED	PAGE
PG.	POINT OF INTERSECTION
PI	POWER POLE
PP	PAVEMENT GRADE
PVT	PROPOSED
PROP.	PRESSURE REDUCING VALVE
PRV	RUBBER GASKETED REINFORCED CONCRETE PIPE
RGRCP	RIGHT-OF-WAY
ROW	RIM GRADE
RM	RIGHT-OF-WAY
RW	RADIUS POINT
RP	RIGHT
RT	SEWER
S	SLOPE
S-	STORM DRAIN
SD	SQUARE FOOT
SF	SHOULDER
SHLDR	STREET INTERSECTION
SI	STREET SIGN
SIGN	SPECIFICATIONS
SPEC	SEWER SERVICE
SS	STOPPING SIGHT DISTANCE
SSD	STATION
STA.	STANDARD
STD	SERVICE
SVC	SQUARE
SQ	SQUARE YARDS
SQ	THRUST BLOCKING
SW	TEMPORARY CONSTRUCTION ESMT.
SY	TEMPORARY
TB	TOP OF CURB ELEVATION
TCE	TOC OF CURB
TEMP	TREE
TOC EL	TYPICAL
TOC	UNISOURCE GAS
TREE	VETERANS ADMINISTRATION
TYP	VERTICAL
UNS	VALLEY GUTTER
VA	VERTICAL LINEAR FEET
VERT.	VERTICAL POINT OF CURVATURE
VG	VERTICAL POINT OF INTERSECTION
VLF	VERTICAL POINT OF TANGENCY
VPC	POTABLE WATER
VPI	WATER METER
VPT	WATER VALVE
W	WITH
WM	CROSSING
WV	YAVAPAI ASSOCIATION OF GOVERNMENTS
W/	YARDS
XING	YAVAPAI PRESCOTT INDIAN TRIBE
YAG	
YDS	
YPIT	

VERIFY SCALE  
BARS ONE INCH ON ORIGINAL DRAWING.  
0 1"  
IF NOT ONE INCH ON THIS SHEET, ADJUST SCALES ACCORDINGLY.

DESIGN RA  
DRAWN RA  
CHECKED RA  
SAL  
APPROVED SAL  
BY AP/VD

REVISION

NO. DATE

LYON ENGINEERING  
Civil Engineers - Land Surveyors  
1855 Millers Creek Rd. Prescott, AZ 86301  
Phone: (928) 736-1751 Fax: (928) 736-9005

PD SHOOTING RANGE IMPROVEMENT PLANS

GENERAL NOTES, QUANTITIES AND ABBREVIATIONS

DATE  
AUGUST 2017

LYON PROJECT #  
889-06

DRAWING NUMBER  
G.02

SHEET 2 OF 4

PROJECT QUANTITIES			
PAYITEM	DESCRIPTION OF ITEM	QUANTITY	UNITS
EARTHWORK			
1	Cut	0	CY
2	Fill	20	CY
3	Balance	-20	CY
DIRT ROADWAY			
4	A.B.C. Backfill Per MAG Std. Det. 200-1 Modified Type E	163	SY
ASPHALT PAD			
5	Sawcut Asphalt Per MAG Std. Det. 200-1 Type B	23	LF
6	Replace Asphalt Per MAG Std. Det. 200-1 Type B	15	SY
7	Bollard Per MAG STD. DET. 140	2	EA
WATER			
8	2" PVC SCH. 40 Water	163	LF
9	2" PVC Gate Valve, Box & Cover	2	EA
CONCRETE			
10	4" Concrete Ramp & Sidewalk	266	SF
11	4" Concrete Pad	423	SF

NOTICE OF EXTENDED PAYMENT PROVISION

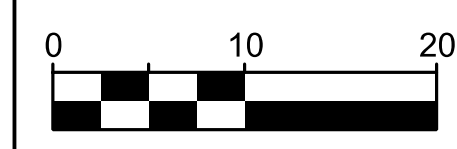
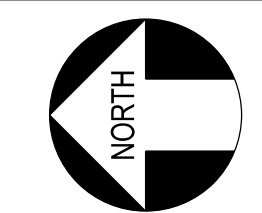
(PER ARS 32-1129.01) THIS CONTRACT ALLOWS THE OWNER TO MAKE PAYMENT WITHIN 15 DAYS AFTER CERTIFICATION AND APPROVAL OF BILLINGS AND ESTIMATES FOR PROGRESS PAYMENTS, WITHIN 15 DAYS AFTER CERTIFICATION AND APPROVAL OF BILLINGS AND ESTIMATES FOR RELEASE OF RETENTION AND WITHIN 15 DAYS AFTER CERTIFICATION AND APPROVAL OF BILLINGS AND ESTIMATES FOR FINAL PAYMENT.

SCOTT A. LYON, P.E.

35898  
SCOTT A. LYON  
8/31/19  
EXPIRES 3/31/2019

LOCAL DATUM			
NO.	NORTHING	EASTING	ELEVATION
1	1,392,759.0100	705,493.6300	4027.19
2	1,392,061.9902	704,969.4651	3993.39
3	1,392,161.9877	704,930.8367	3994.98
4	1,392,130.6314	704,985.3773	3994.60
5	1,392,122.6314	705,003.3773	3994.60
6	1,391,990.4391	704,994.3773	3992.50
7	1,391,961.8133	704,982.5201	3992.29

◆ MONUMENT FOUND



**DRAWING SCALE**  
1 inch = 10 Feet  
(This scale is valid for 22"x34" sheets only)

**WATER KEY NOTES**

- 1 INSTALL 2" PVC SCH. 40 & MAINTAIN POSITIVE SLOPE & 3" COVER FOR PROPOSED WATER LINE
- 6 INSTALL 1" AIR VACUUM RELEASE VALVE ASSEMBLY PER ARIZONA WATER CO. ON DRAWING NUMBER D.01
- 50 INSTALL 2" PVC BALL VALVE RATED FOR 100 PSI WORKING PRESSURE WITH PVC RISER AND LID PER W-1 ON DRAWING D.01
- 70 INSTALL HORIZONTAL BEND WITH THRUST BLOCK PER MAG. STD. DET. 380

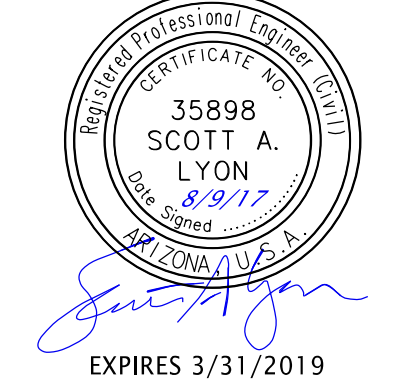
**NOTES**

- 1 INSTALL 2 EA. BOLLARDS PER MAG. STD. DET. 140
- 2 INSTALL 360 SF 4" THICK CONC. PAD ON 4" ABC AND 8" PREPARED SUBGRADE COMPACTED TO 95% AROUND PREFABRICATED RESTROOM
- 3 INSTALL 266 SF OF 4" CONC. RAMP & SIDEWALK ON 4" ABC AND 8" PREPARED SUBGRADE COMPACTED TO 95%
- 4 REMOVE & REPLACE EX. RAILROAD TIES & EX. A.B. 62 SY WITHIN SAWCUT LIMITS
- 5 REMOVE EX. BOULDERS ALONG EDGE OF TURN AROUND & REPLACE AFTER CONSTRUCTION PHASE
- 6 TRENCH 162.7 LF PER MODIFIED MAG. STD. DET. 200-1 (TYPE "E")
- 7 SAWCUT AND REPLACE 15 SY EX. ASPHALT PER MAG. STD. DET. 200-1 TYPE B
- 8 INSTALL 63 SF OF 4" CONC. RAMP & SIDEWALK ON 4" ABC AND 8" PREPARED SUBGRADE COMPACTED TO 95%

NOTE:  
ALL ELECTRICAL CONNECTIONS WILL BE COORDINATED THROUGH THE CITY OF SEDONA

**NOTICE OF EXTENDED PAYMENT PROVISION**  
(PER ARS 36-1129 (D)) THIS CONTRACT ALLOWS THE OWNER TO MAKE PAYMENT WITHIN 15 DAYS AFTER CERTIFICATION AND APPROVAL OF BILLINGS AND ESTIMATES FOR PROGRESS PAYMENTS. WITHIN 15 DAYS AFTER CERTIFICATION AND APPROVAL OF BILLINGS AND ESTIMATES FOR RELEASE OF RETENTION AND WITHIN 15 DAYS AFTER CERTIFICATION AND APPROVAL OF BILLINGS AND ESTIMATES FOR FINAL PAYMENT.

SCOTT A. LYON, P.E.



DESIGN	RA	DATE	
DRAWN	RA	DATE	
CHECKED	SAL	DATE	
APPROVED	SAL	DATE	

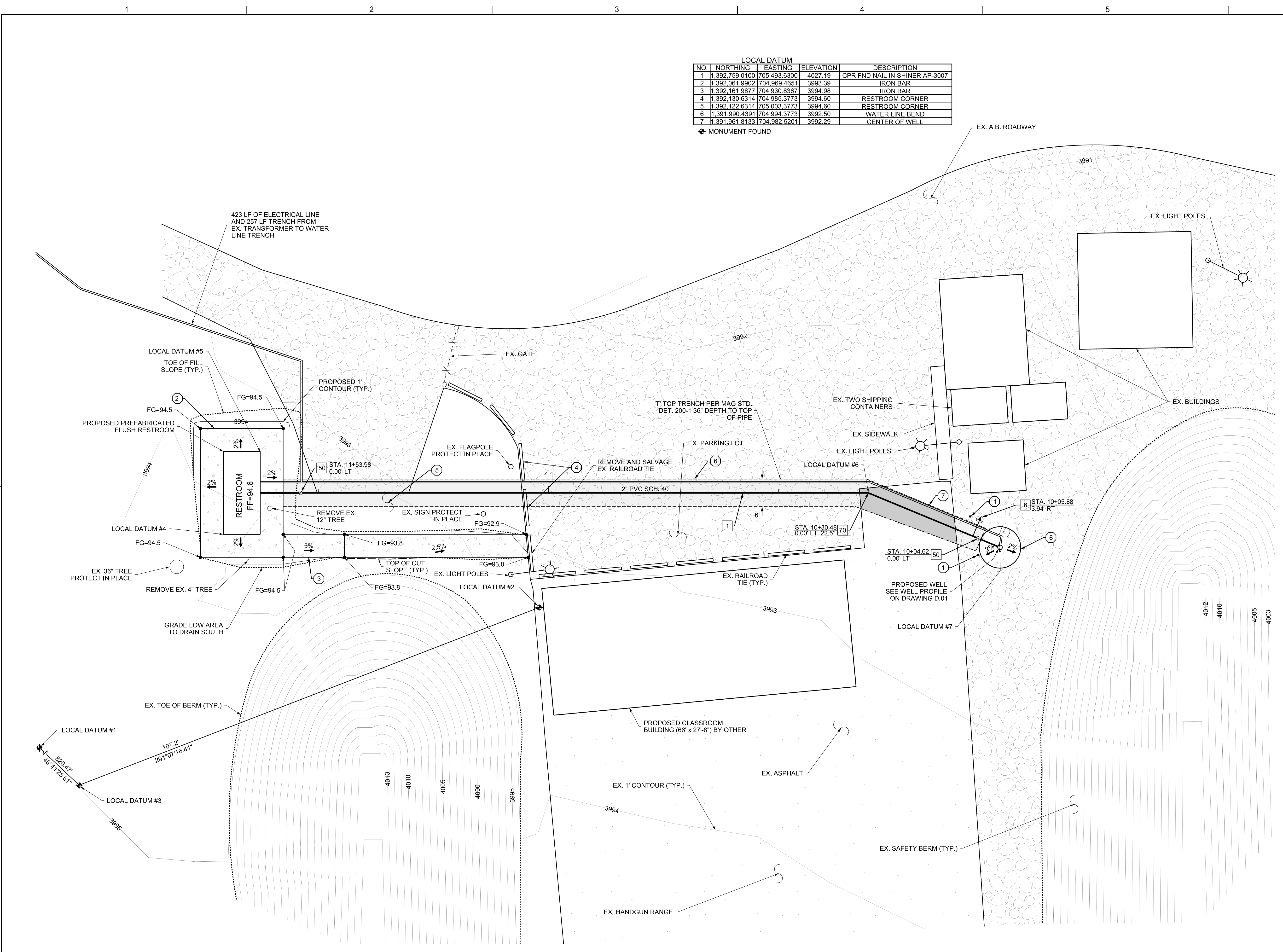
REVISION	BY	DATE	NO.

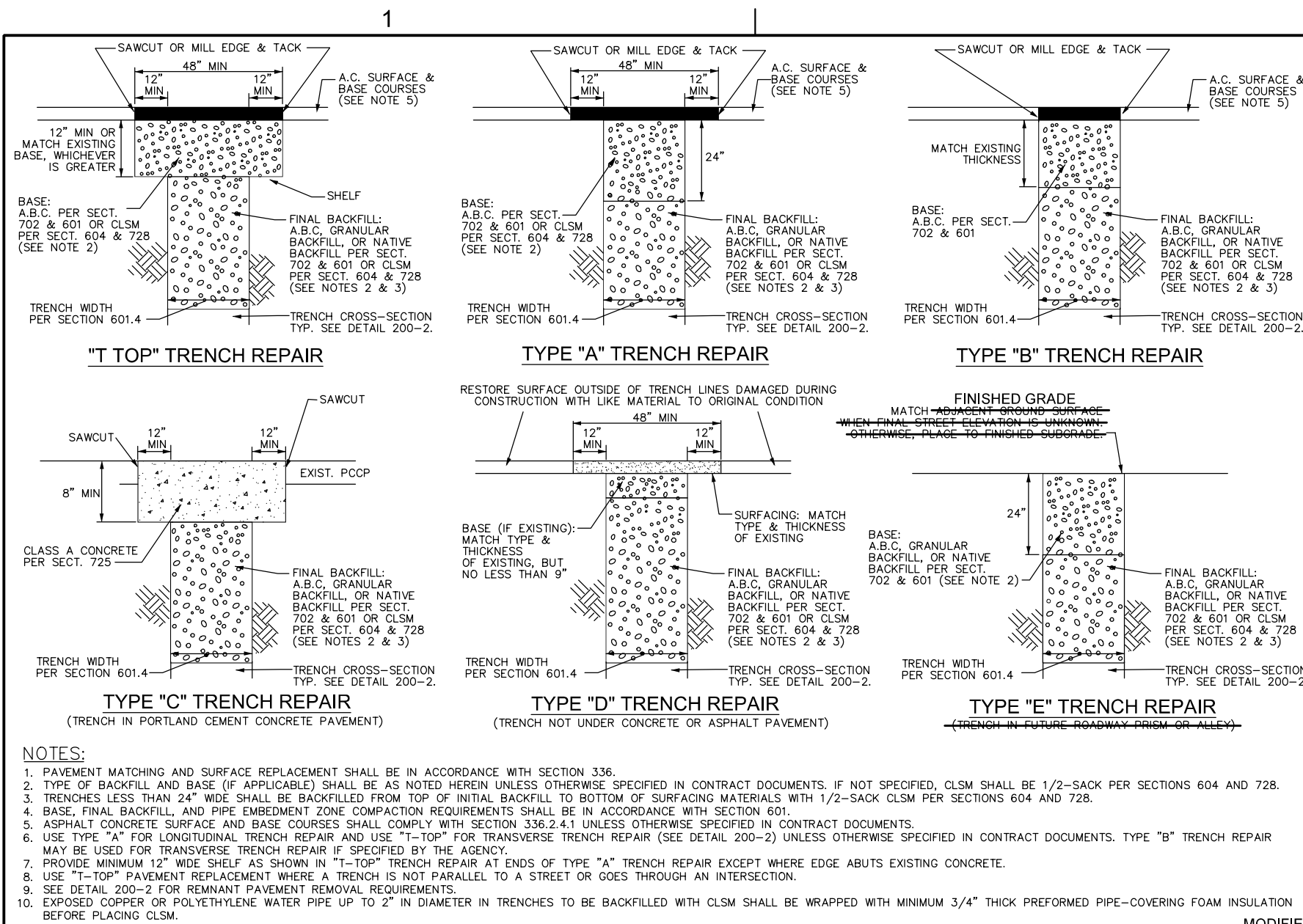
**LYON ENGINEERING**  
Civil Engineers • Land Surveyors  
1855 W. McDowell Blvd., Suite 101, Sedona, AZ 86361  
Phone: (928) 718-1751 Fax: (928) 718-9905

**PD SHOOTING RANGE IMPROVEMENT PLANS**

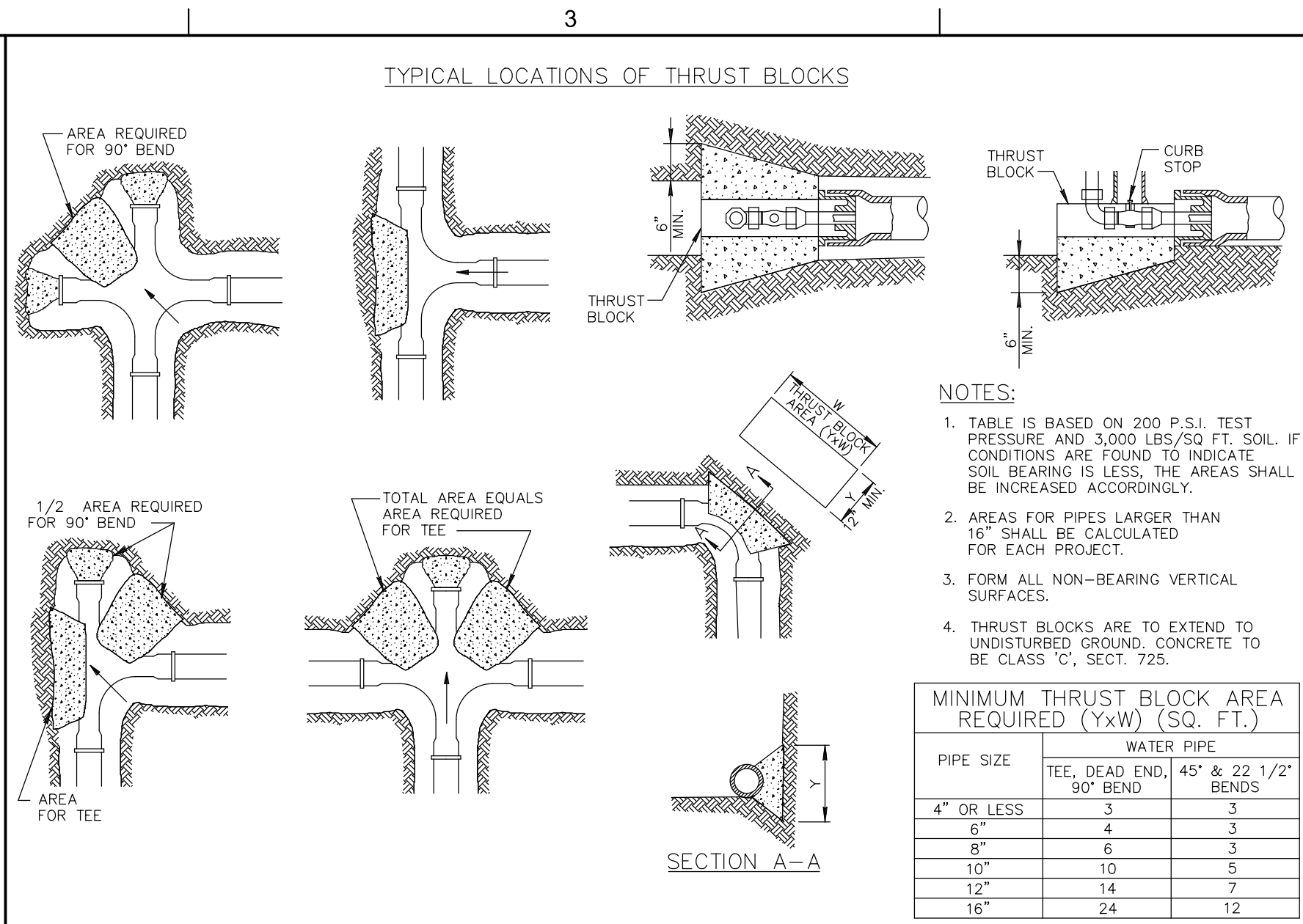
**PD SHOOTING RANGE IMPROVEMENTS**

DATE	AUGUST 2017
LYON PROJECT #	889-06
DRAWING NUMBER	C.01
SHEET	3 OF 4

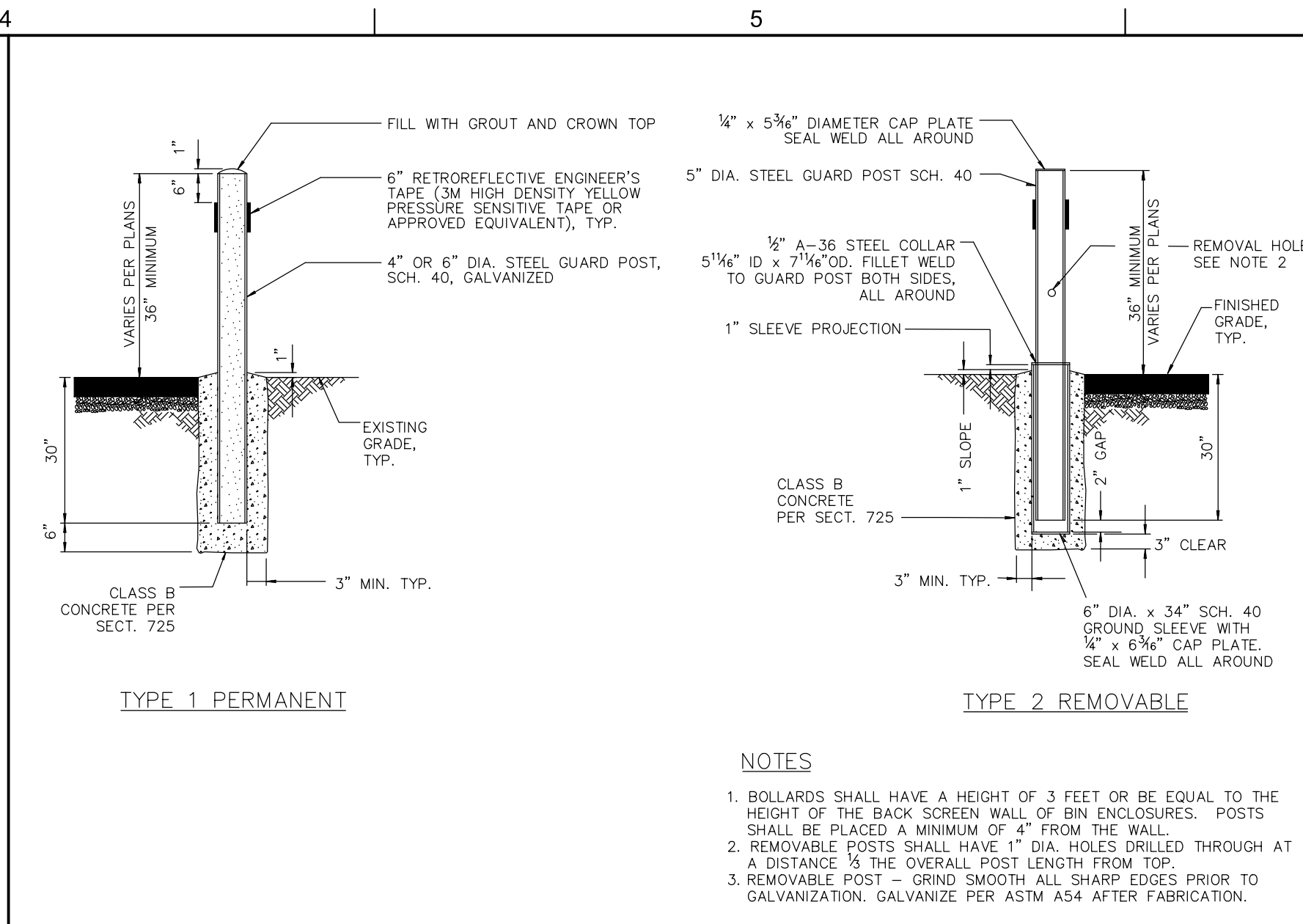




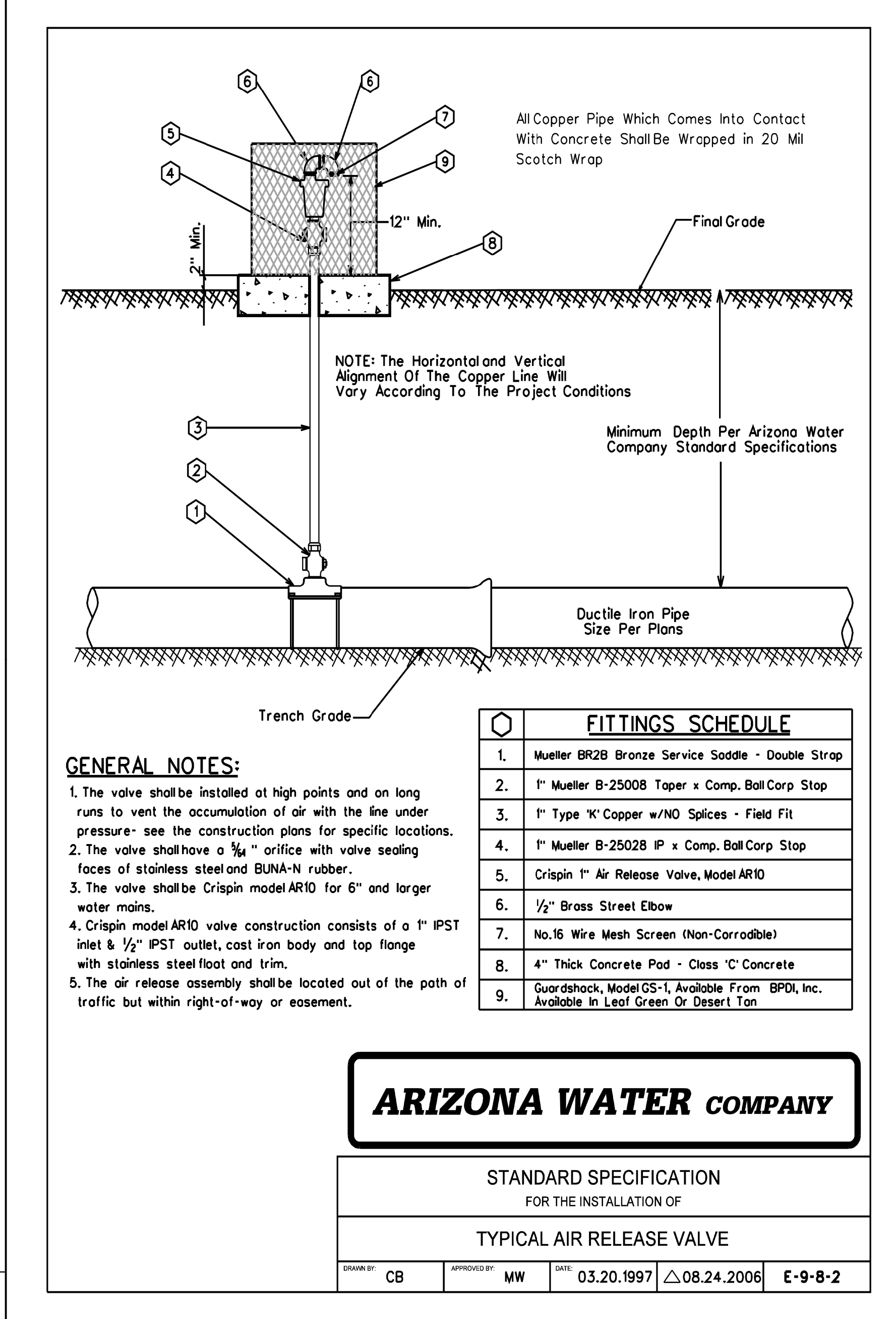
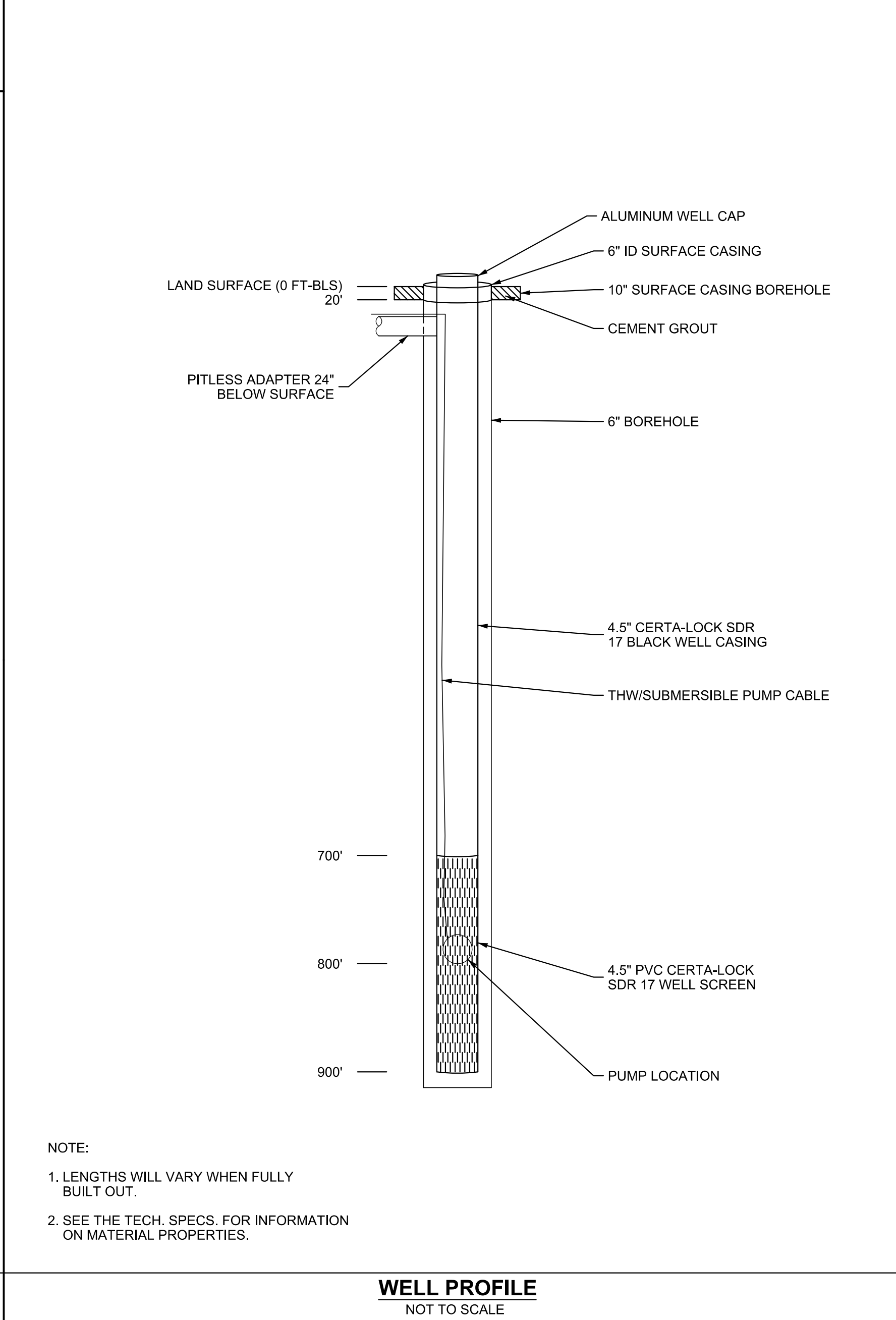
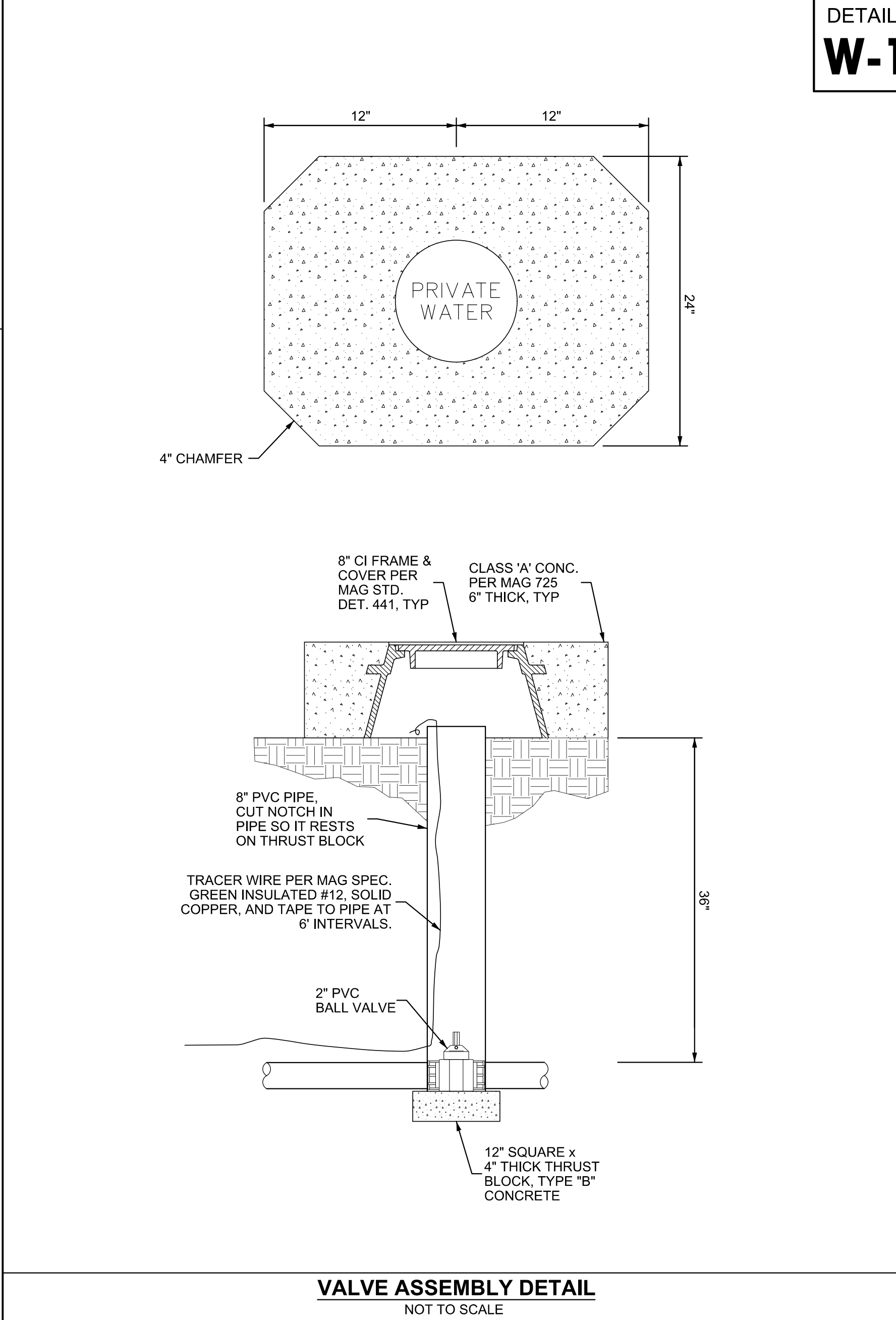
DETAIL NO. 200-1 MARICOPA ASSOCIATION OF GOVERNMENTS STANDARD DETAIL ENGLISH BACKFILL, PAVEMENT AND SURFACE REPLACEMENT PROPOSED 01-01-2015 MODIFIED 200-1



DETAIL NO. 380 MARICOPA ASSOCIATION OF GOVERNMENTS STANDARD DETAIL ENGLISH THRUST BLOCKS FOR WATER LINES REVISED 380



DETAIL NO. 140 MARICOPA ASSOCIATION OF GOVERNMENTS STANDARD DETAIL ENGLISH BOLLARD REVISED 01-01-2009 140



**VERIFY SCALE**  
 BARS ONE INCH ON ORIGINAL DRAWING.  
 0 1" IF NOT ONE INCH ON THIS SHEET, ADJUST SCALES ACCORDINGLY.

DESIGN: RA DRAWN: RA CHECKED: SAL APPROVED: SAL BY: AP/VD

**LYON ENGINEERING**  
 Civil Engineers • Land Surveyors  
 1855 W. McDowell Blvd., Suite 201, Sebastopol, CA 95971  
 Phone: (707) 761-1131 Fax: (707) 761-9005

**PD SHOOTING RANGE IMPROVEMENT PLANS**

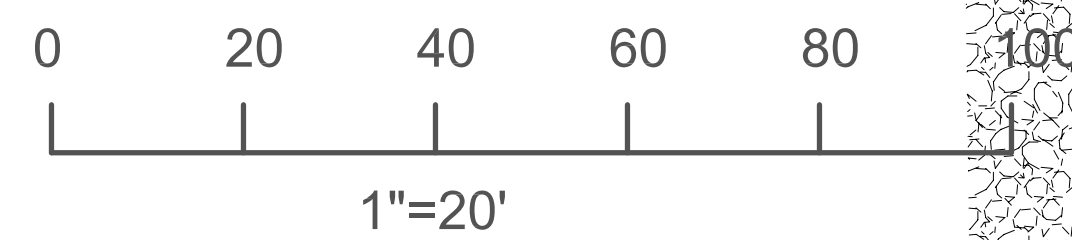
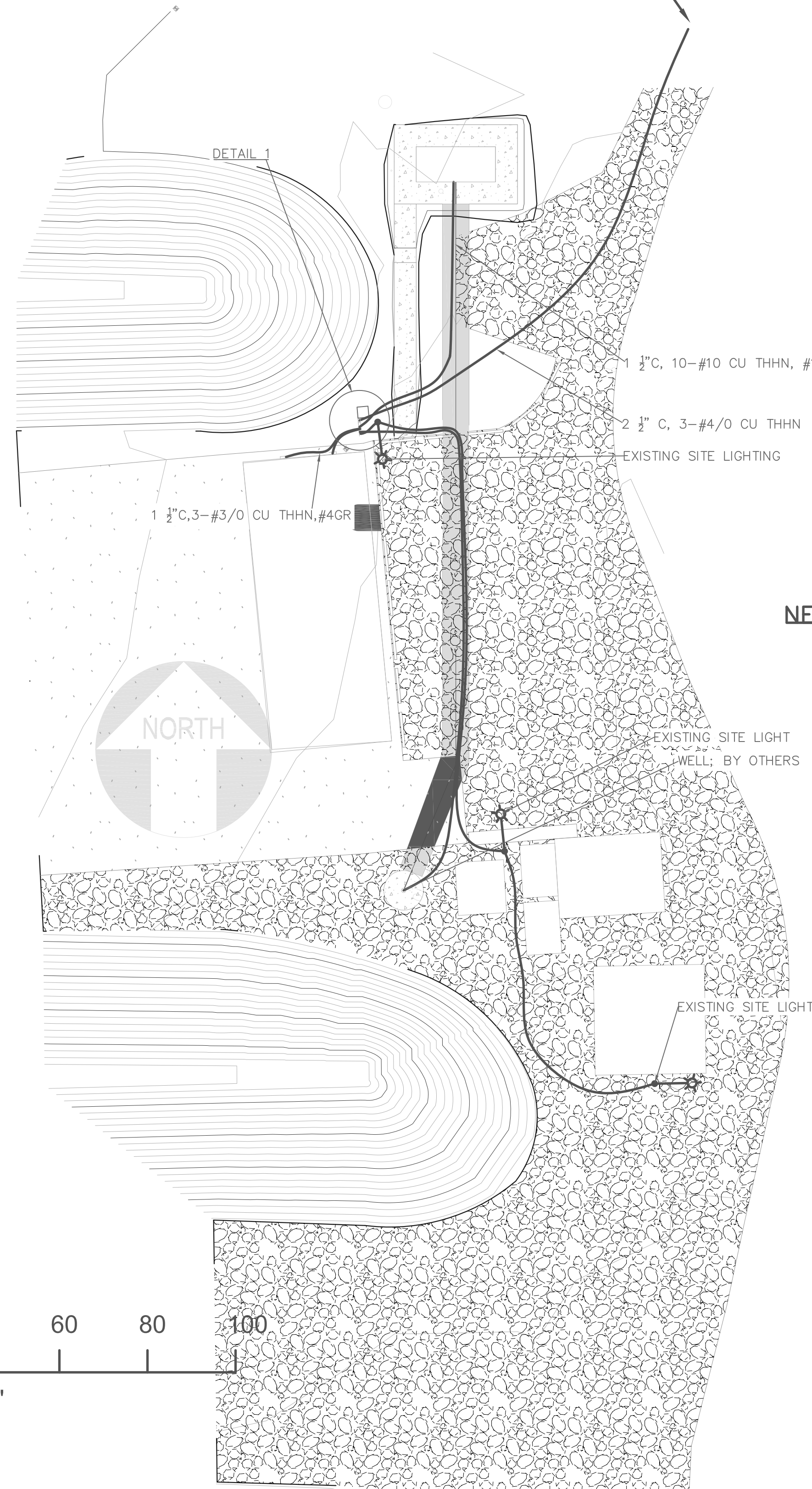
**NOTICE OF EXTENDED PAYMENT PROVISION**  
 (PER A.S. 17-129.01) THIS CONTRACT ALLOWS THE OWNER TO MAKE PAYMENTS TO THE CONTRACTOR IN THE FORM OF MONTHLY BILLINGS AND ESTIMATES FOR PROGRESS PAYMENTS, WITHIN 15 DAYS AFTER CERTIFICATION AND APPROVAL OF BILLINGS, AND ESTIMATES FOR RELEASE OF RETENTION, AND WITHIN 15 DAYS AFTER CERTIFICATION AND APPROVAL OF BILLINGS, AND ESTIMATES FOR FINAL PAYMENT.

**ARIZONA WATER COMPANY**  
 STANDARD SPECIFICATION FOR THE INSTALLATION OF TYPICAL AIR RELEASE VALVE

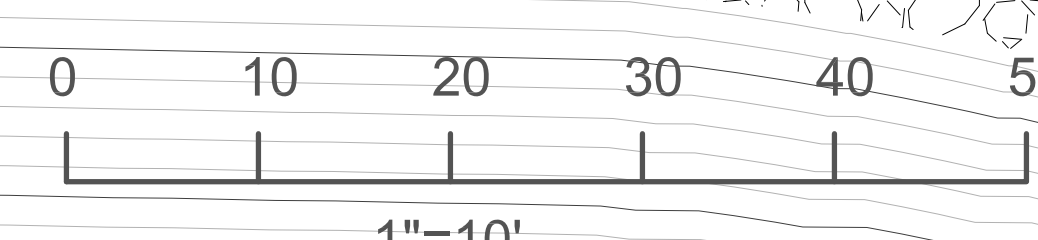
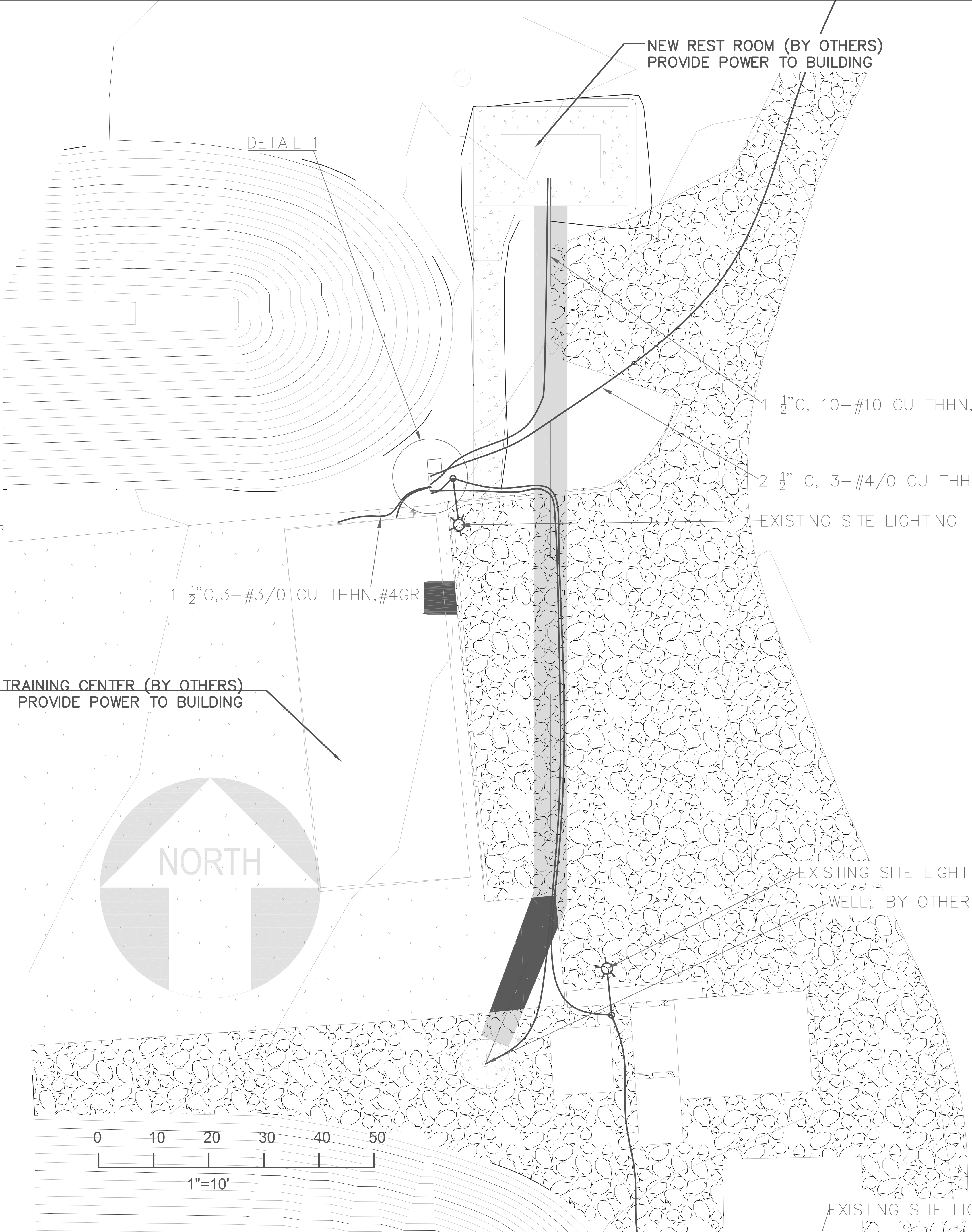
SCOTT A. LYON, P.E.  
 REGISTERED PROFESSIONAL ENGINEER  
 35898 SCOTT A. LYON  
 8/9/17  
 EXPIRES 3/31/2019

DATE: AUGUST 2017  
 LYON PROJECT #: 889-06  
 DRAWING NUMBER: D.01  
 SHEET: 4 OF 4  
 SCALE: 1:20

CONTINUE  
ALONG ROAD  
APPROX.  
440'  
OVERALL  
TERMINATION  
AT MCC NEXT  
TO SES#3  
SEE SINGLE LINE



DETAIL 1



NEW REST ROOM (BY OTHERS)  
PROVIDE POWER TO BUILDING

NEW TRAINING CENTER (BY OTHERS)  
PROVIDE POWER TO BUILDING

1 1/2" C, 10-#10 CU THHN, #10 GR  
2 1/2" C, 3-#4/0 CU THHN  
EXISTING SITE LIGHTING

1 1/2" C, 3-#3/0 CU THHN, #4GR

EXISTING SITE LIGHT  
WELL; BY OTHERS

EXISTING SITE LIGHT  
WELL; BY OTHERS

By:	
Date:	
Revisions:	

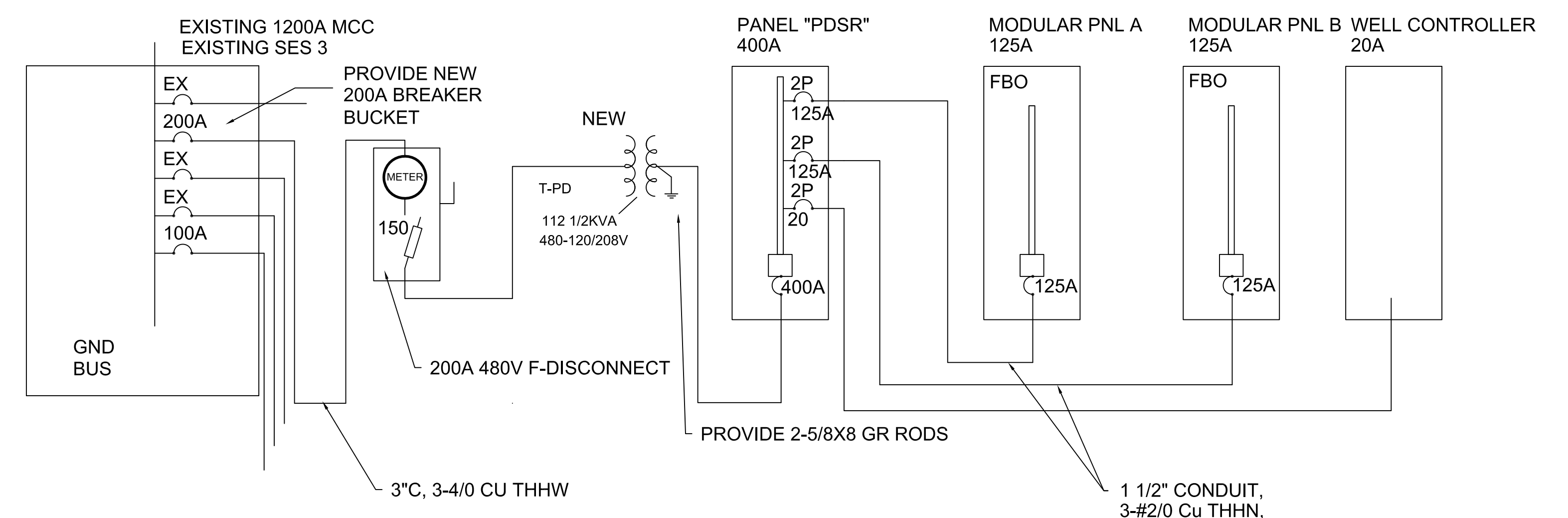
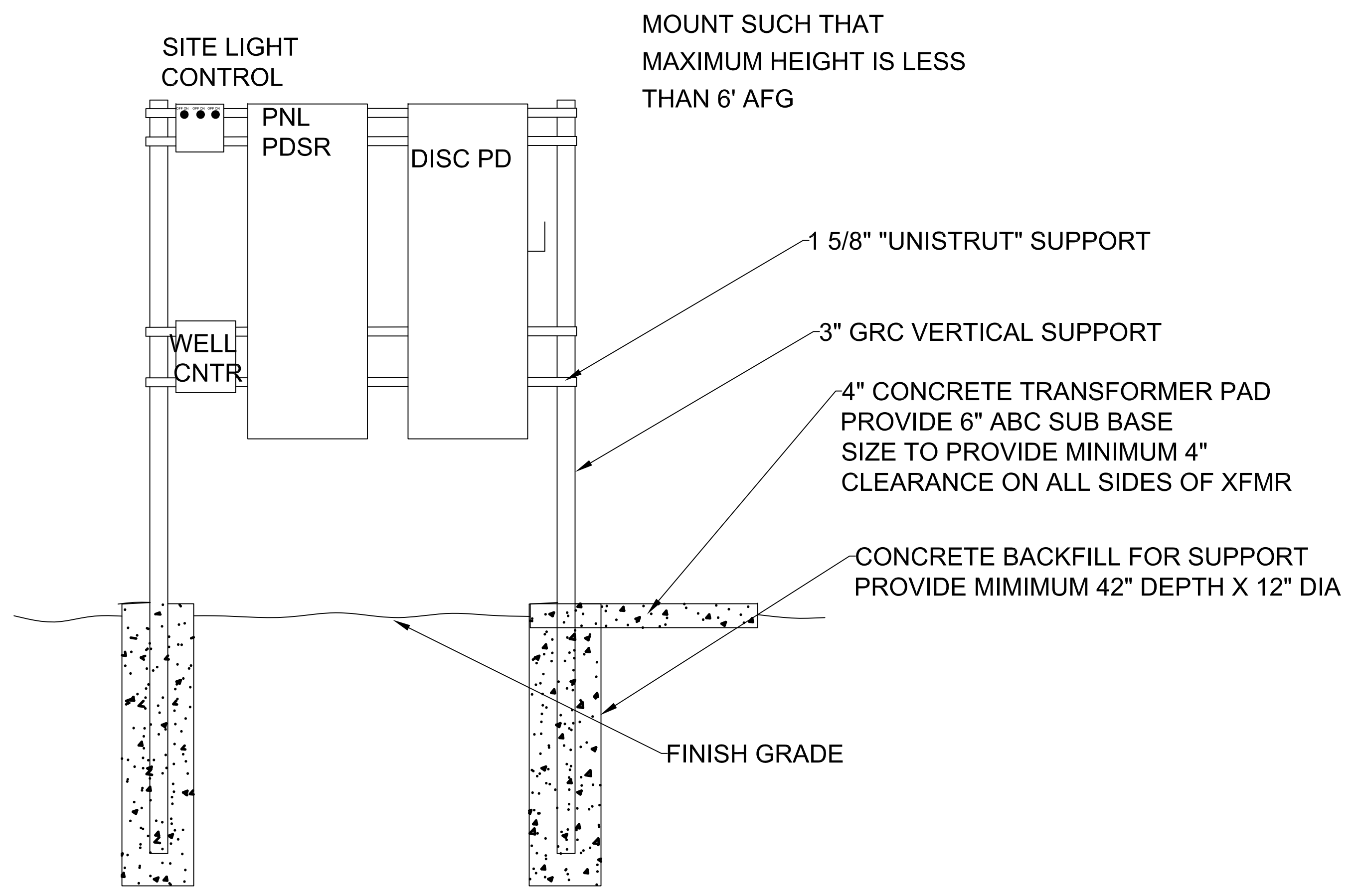
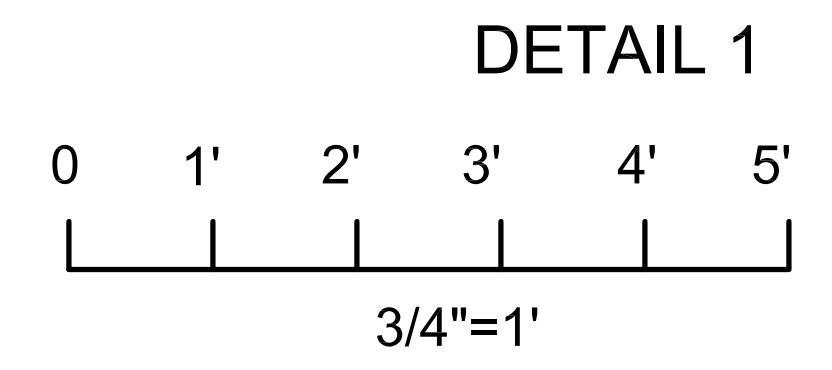
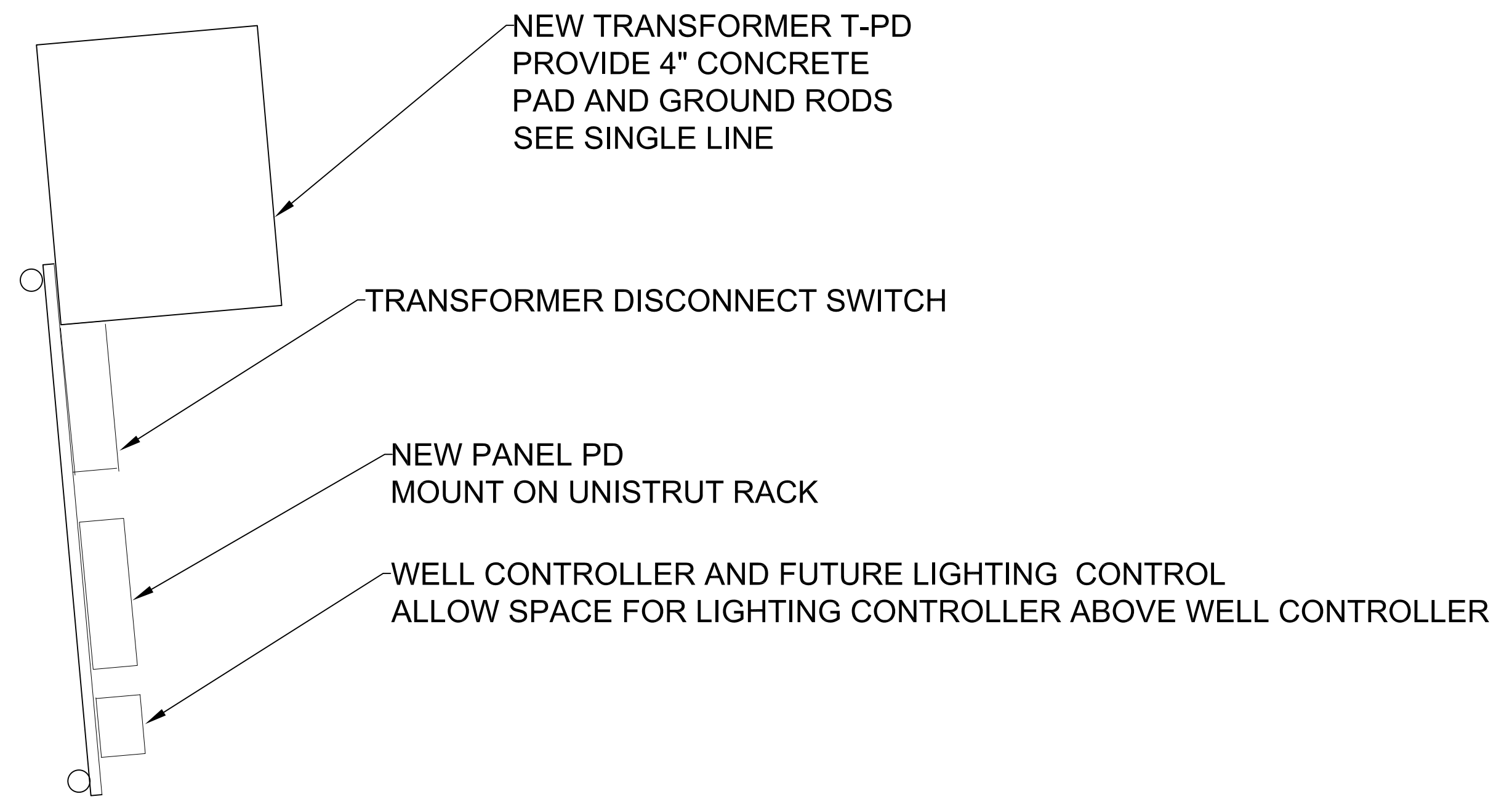
**Mountain High Engineering**  
Frank Patton Jr. - Electrical Engineering  
PO Box 819  
Flagstaff, Arizona 86002  
Telephone (928) 774-4564  
Fax (928) 773-1134  
mountainhighengineering@safesaccess.com



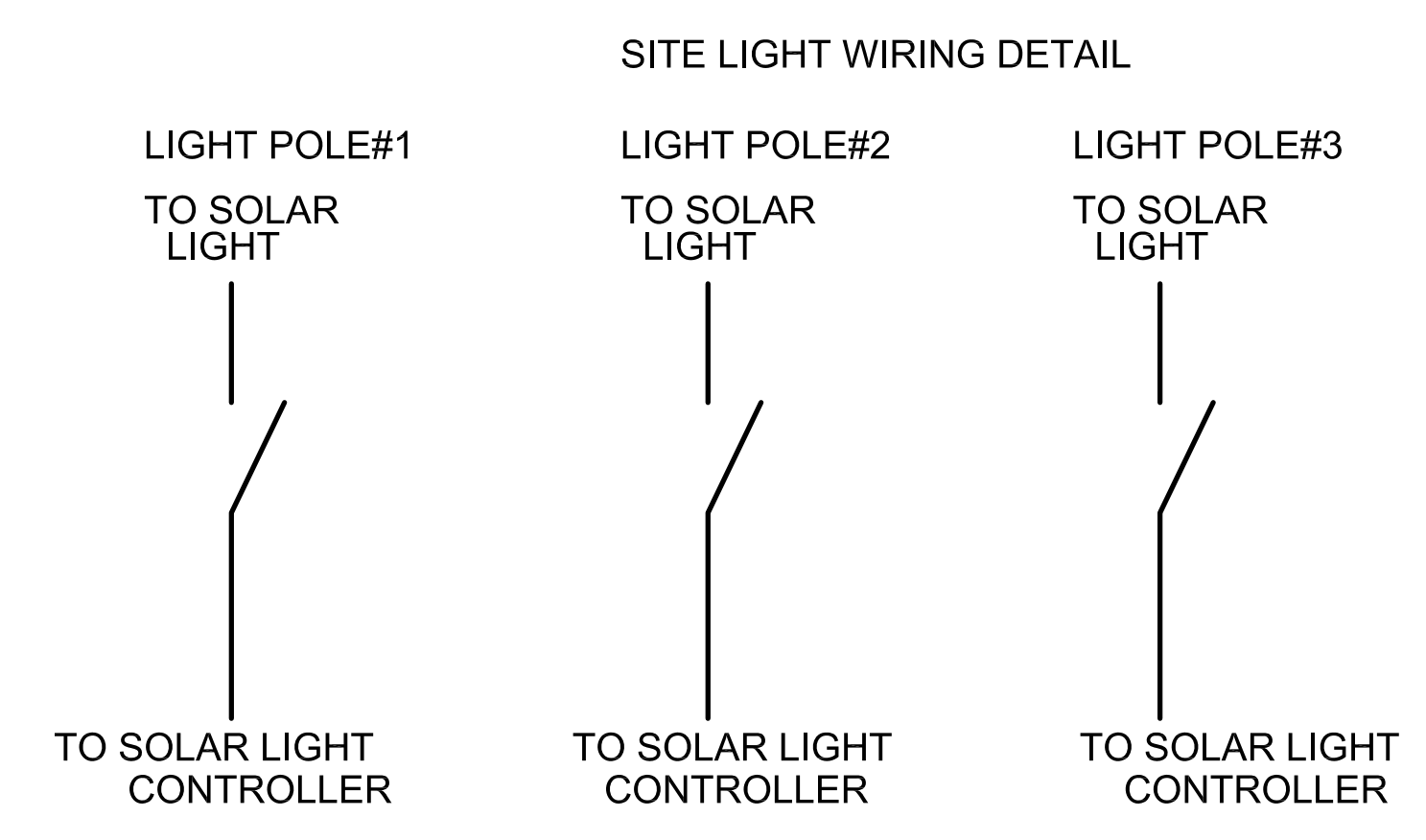
**CITY OF SEDONA POLICE  
DEPARTMENT SHOOTING  
OFFICE  
SEDONA, AZ**

**E1 Electrical Plan**  
Sheet No.: 1  
Scale: As Listed  
Date: 8/30/17  
By: FPJ  
Checked: FPJ  
Drawing No.:





SINGLE LINE DIAGRAM



INTERCEPT WIRING BETWEEN  
LIGHT AND CONTROLLER AND  
INSTALL NEW OIL TIGHT SWITCH TO OVERRIDE  
AUTO CONTROL. PROVIDE 2-#10 WIRE  
#10GR FROM EACH LIGHT TO SWITCH LOCATION

By:	
Date:	
Revisions:	
<p><b>Mountain High Engineering</b>          Frank Patton Jr. - Electrical Engineering          PO Box 819          Flagstaff, Arizona 86002          Telephone: (930) 774-4664          Facsimile: (930) 773-1134          mountainhighengineering@safesuccess.com</p>	
<p><b>CITY OF SEDONA POLICE DEPARTMENT SHOOTING OFFICE SEDONA, AZ</b></p>	
<p><b>SINGLE LINE AND SCHEDULES</b></p>	<p>Job No.: Date: 8/30/17 By: F.P. CK'd: F.P.J.</p>
<p>Sheet 2 - 4</p>	<p>Scale: NOT TO SCALE</p>

PANEL: PDSR										VOLTAGE: 120/208					BUS AMPS 400A MCB													
TYPE: NEMA 3R										MOUNTING: SURFACE					MIN AIC: 10000													
CIRCUIT DESCRIPTION	L	R	M	C	N	VA LOAD										CIRCUIT DESCRIPTION												
						BKR	CIR	PH A	PH B	PH C	CIR	BKR	L	R	M		C	N										
Modular Panel A	0	0	0	0	13794	2P	1	13794								1P						0	Space					
Modular Panel A	0	0	0	0	12024		3	12024								2P								0	Space			
Modular Panel A	0	0	1679	0	0	2P	5	11600								4								11600	Modular Panel B			
Well / Well Controller	0	0	1679	0	0																				0	Space		
Well / Well Controller	0	0	1679	0	0																					0	Space	
Rest Room Lights	75	0	0	0	0	1P	9	75								1P										0	Space	
Rest Room Heater	0	0	0	0	1500	1P	11	1500								1P											0	Space
Rest Room Heater	0	0	0	0	1500	1P	13	1500								1P											0	Space
Rest Room Heater	0	0	0	0	1500	1P	13	1500								1P											0	Space
Site Lighting	195	0	0	0	0	1P	15	195								1P											0	Space
Space	0	0	0	0	0	1P	17	0								1P											0	Space
Space	0	0	0	0	0	1P	19	0								1P											0	Space
Space	0	0	0	0	0	1P	21	0								1P											0	Space
Space	0	0	0	0	0	1P	23	0								1P											0	Space
Space	0	0	0	0	0	1P	23	0								1P											0	Space
LIGHTING								0	270																			0
RECEPS								0	0																			0
MOTOR								2679	0	2679																		0
CONTINUOUS								0	0	0																		0
NON-CONTINUOUS								15294	23624	14070																		0
CONNECTED LOAD								17973	23894	16749																		0
25% OF LIGHTING LOAD								0	67.5	0																		0
50% RECEPS OVER 10KVA								0	0	0																		0
25% OF LARGEST MOTOR								419.63	0	419.63																		0
25% OF CONTINUOUS LOAD								0	0	0																		0
TOTAL LOAD								18392	23962	17168																		59522
AMPERES								153.27	199.68	143.07																		

By:	
Date:	
Revisions:	

**Mountain High Engineering**  
 Frank Patton Jr. - Electrical Engineering  
 PO Box 819  
 Flagstaff, Arizona 86002  
 Telephone (928) 774-4564  
 Facsimile (928) 773-1134  
 mountainhighengineering@safefaccess.com



**CITY OF SEDONA POLICE  
 DEPARTMENT SHOOTING  
 OFFICE  
 SEDONA, AZ**

Sheet 3 - 4  
 Scale: NOT TO SCALE  
 By: FP  
 Date: 8/30/17  
 Job No.:  
 Drawing No.:  
**SCHEDULES**

