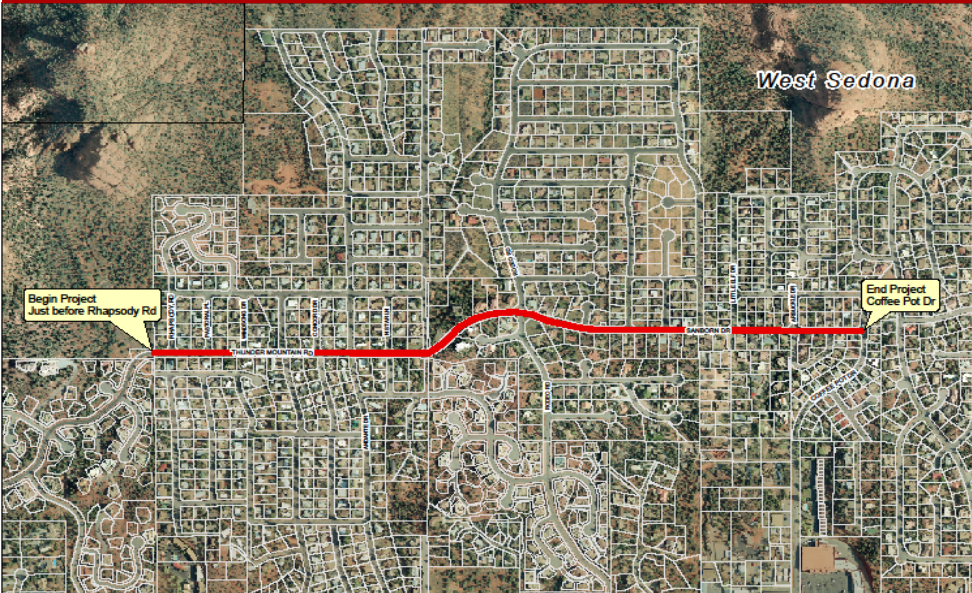




**City of Sedona**  
**Public Works Department**  
 102 Roadrunner Drive Sedona, AZ 86336  
 (928) 204-7111 • Fax: (928) 282-5348

**Sanborn Drive/Thunder Mountain Road Overlay** **FY18 CIP Update**



**KEY FEATURES:**

**Consultant:** Woodson Engineering, Inc.

**Contractor:** TBD

**Timing:** Fall 2018 Construction

**Construction Challenges:**

- Environmental Clearances
- Maintenance of Traffic

**Project Manager:**

Stephen Craver, PE  
 (928) 203-5059

[SCraver@SedonaAZ.gov](mailto:SCraver@SedonaAZ.gov)

**City Engineer:**

J. Andy Dickey, PE  
 (928) 203-5039

[ADickey@SedonaAZ.gov](mailto:ADickey@SedonaAZ.gov)

**\$ FY18 Project Budget:** \$75,750

**Total Project Budget:** \$682,174

The project will include a mill and overlay, with minor shoulder widening and curb along the south side of the roadway allowing for the construction of a shared use path in the future. The approximate one mile segment of Sanborn Drive/Thunder Mountain Road is between Rhapsody Road and Coffee Pot Drive.

This project is part of the Surface Transportation Program (STP), which is administered by the Northern Arizona Council of Governments (NACOG). A professional services contract with Woodson Engineering was approved by Council on September 13, 2016.

**Status:** It is staff's intent to complete the project through the HURF Exchange Program, which will eliminate the need to design and construct the roadway to federal standards, reducing overall costs in the process. Final plans, specifications, and cost estimate are expected in June 2018. Due to budget constraints in the FY 19 CIP budget, the construction of this project will be deferred to FY 20. Staff will present an amendment to the NACOG Technical Subcommittee in June to transfer the funds to FY 20.

For a copy of this update, or updates for other projects, visit the projects website at: [www.sedonaaz.gov/CIP](http://www.sedonaaz.gov/CIP).

**Project Status** **April 2018**

Project Phase	% Completion	Completion Date
Design	95%	June 2018
Construction	0%	FY 20