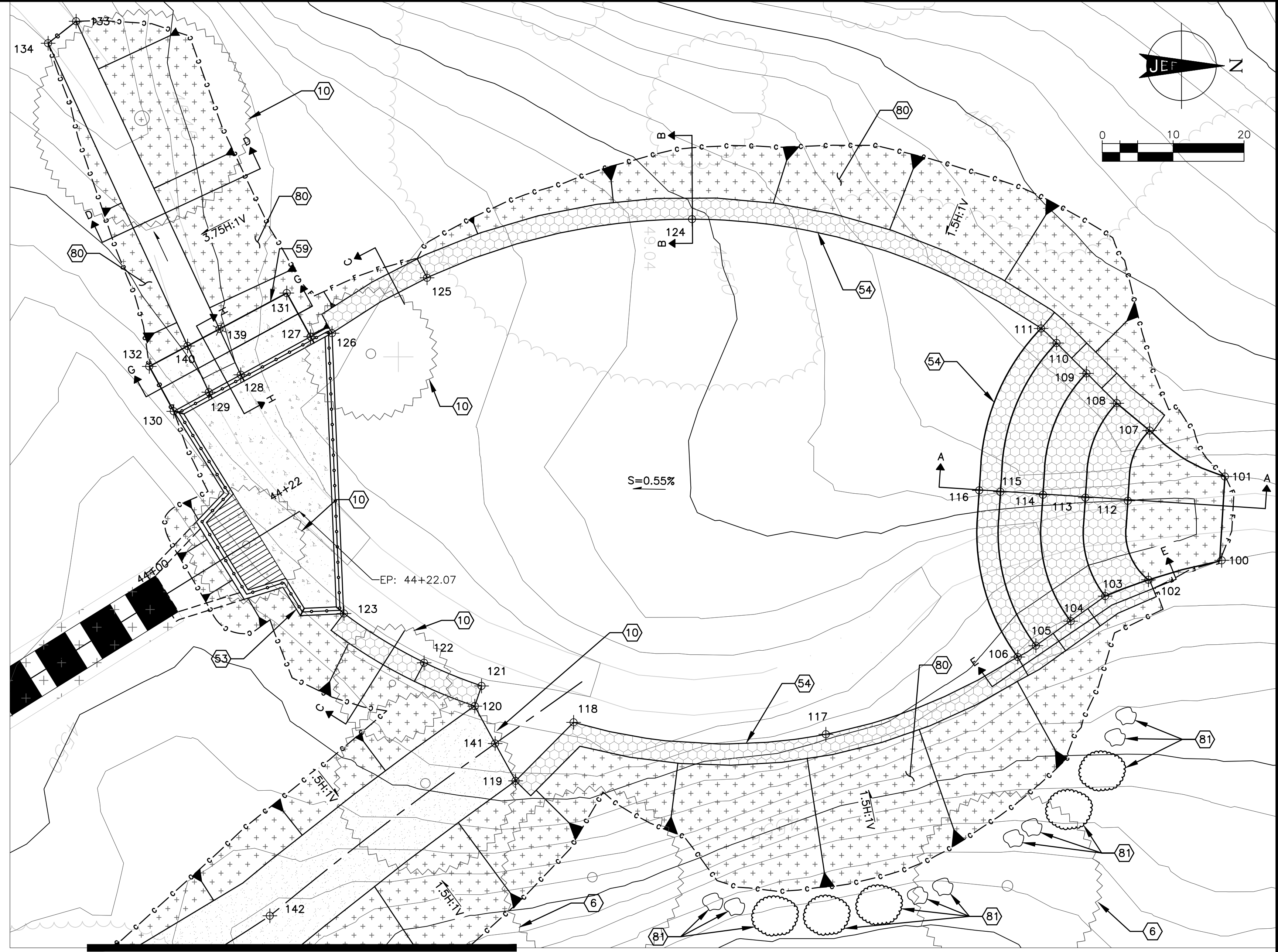
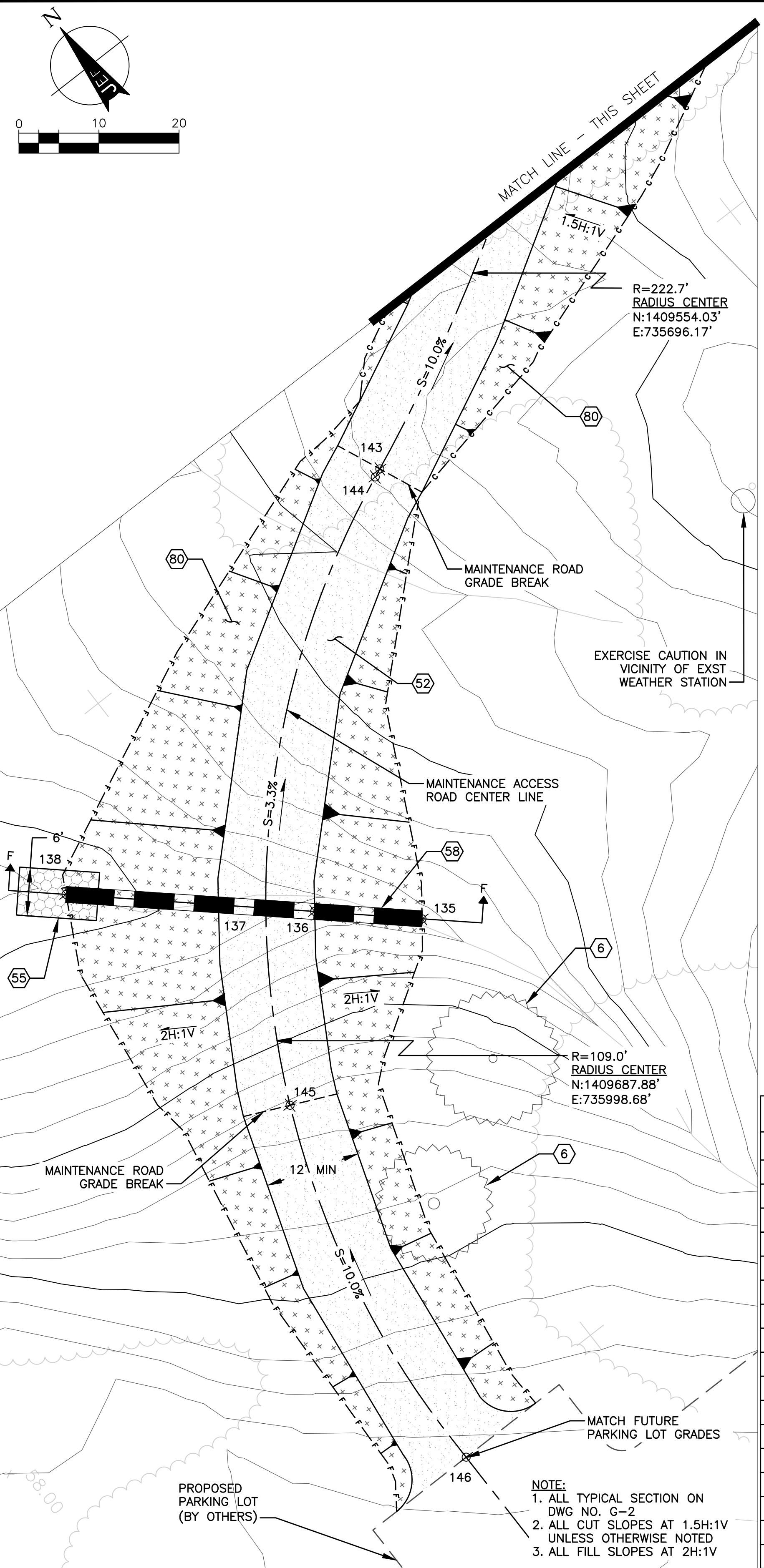


PLOTTED: May 23, 2017 - 6:24pm



**CONSTRUCTION NOTES**

NO.	DESCRIPTION	EST. QTY. THIS SHEET
	BASIN EXCAVATION AND EXPORT	2105 CY
	COMPACTED BACKFILL	255 CY
	CLEARING AND GRUBBING	1 LS
6	PROTECT EXST LANDSCAPING IN PLACE	4 EA
10	REMOVE EXST TREE	5 EA
52	CLASS B GRAVEL ROAD 6" THICK	284 SY
53	LITTLE ELF INLET, SEE DWG NO. STR-3.1 TO STR-3.3	1 LS
54	GABION BASKETS. SEE TYPICAL SECTIONS ON DWG NO. G-2.	191 CY
55	RIPRAP; D50=9" (INSTALLED), SEE SECTION F-F, DWG NO. G-2.	3.5 CY
58	24" CMP	47 LF
59	CONCRETE SPLASH PAD. SEE TYPICAL SECTIONS ON DWG NO. G-2.	1 LS
80	HYDROSEED DISTURBED AREAS	6,593 SF
81	SEDIMENT BASIN LANDSCAPING	1 LS

MATCH LINE - THIS SHEET

Point Table				
Point #	Elevation	Northing	Easting	Description
100	4551.00	1409816.09	735828.70	NATURAL CHANNEL BOTTOM
101	4551.00	1409816.55	735816.88	NATURAL CHANNEL BOTTOM
102	4550.00	1409805.77	735831.45	TOP OF GABION STAIRSTEP
103	4550.00	1409799.66	735833.75	TOP OF GABION STAIRSTEP
104	4548.20	1409794.81	735837.28	TOP OF GABION STAIRSTEP
105	4546.40	1409789.90	735840.73	TOP OF GABION STAIRSTEP
106	4544.50	1409787.35	735842.34	BASIN BOTTOM
107	4550.00	1409805.93	735810.40	TOP OF GABION STAIRSTEP
108	4550.00	1409801.30	735806.56	TOP OF GABION STAIRSTEP
109	4548.20	1409797.04	735802.33	TOP OF GABION STAIRSTEP
110	4546.40	1409792.82	735798.06	TOP OF GABION STAIRSTEP
111	4544.50	1409790.63	735796.01	TOP OF GABION STAIRSTEP
112	4550.00	1409802.86	735820.29	TOP OF GABION STAIRSTEP
113	4550.00	1409796.88	735819.87	TOP OF GABION STAIRSTEP
114	4548.20	1409790.89	735819.45	TOP OF GABION STAIRSTEP
115	4546.40	1409784.91	735819.04	TOP OF GABION STAIRSTEP
116	4544.50	1409781.91	735818.83	BASIN BOTTOM

Point Table				
Point #	Elevation	Northing	Easting	Description
117	4544.37	1409760.29	735853.22	BASIN BOTTOM
118	4544.19	1409724.72	735851.54	BASIN BOTTOM
119	4544.20	1409716.54	735859.79	BASIN BOTTOM
120	4544.20	1409710.78	735849.27	BASIN BOTTOM
121	4544.12	1409711.73	735846.42	BASIN BOTTOM
122	4544.07	1409703.64	735843.15	BASIN BOTTOM
123	4544.00	1409692.33	735836.19	BASIN BOTTOM
124	4544.25	1409741.42	735780.59	BASIN BOTTOM
125	4544.07	1409704.06	735788.86	BASIN BOTTOM
126	4544.00	1409690.65	735796.66	BASIN BOTTOM
127	4547.00	1409687.65	735797.15	TOP OF CONCRETE PAD
128	4543.00	1409677.79	735802.53	TOE OF CHANNEL
129	4543.00	1409673.28	735804.99	TOE OF CHANNEL
130	4546.40	1409668.34	735807.68	TOP OF CONCRETE PAD
131	4546.87	1409684.28	735791.00	TOP OF CONCRETE PAD
132	4546.27	1409664.89	735801.36	TOP OF CONCRETE PAD
133	4542.00	1409654.58	735752.69	TOE OF CHANNEL

Point Table				
Point #	Elevation	Northing	Easting	Description
134	4542.00	1409650.63	735755.78	TOE OF CHANNEL
135	4546.87	1409615.37	735946.05	CMP INV
136	4554.21	1409605.37	735937.10	MAINTENANCE ROAD
137	4554.21	1409596.40	735929.07	MAINTENANCE ROAD
138	4544.19	1409582.19	735916.35	CMP INV
139	4542.87	1409674.78	735796.07	TOE OF CHANNEL
140	4542.87	1409670.28	735798.48	TOE OF CHANNEL GRADING
141	4544.20	1409713.66	735854.53	MAINTENANCE ROAD
142	4548.20	1409681.90	735878.83	MAINTENANCE ROAD
143	4552.32	1409645.74	735898.47	MAINTENANCE ROAD
144	4552.36	1409644.67	735898.93	MAINTENANCE ROAD
145	4555.04	1409588.08	735954.31	MAINTENANCE ROAD
146*	4560.00	1409578.42	736002.50	MAINTENANCE ROAD

\*THE MAINTENANCE ACCESS ROAD IS INTENDED TO TIE INTO THE SUGAR LOAF TRAILHEAD PARKING LOT. MODIFICATIONS TO THE PARKING LOT WILL LIKELY OCCUR BEFORE THE CONSTRUCTION OF THIS PROJECT. NORTHINGS, EASTINGS, AND ELEVATIONS SHOULD BE REEVALUATED BEFORE CONSTRUCTION OF THIS ACCESS ROAD TO ACHIEVE THE INTENDED PURPOSE.

NOTE:  
 1. ALL TYPICAL SECTION ON DWG NO. G-2  
 2. ALL CUT SLOPES AT 1.5H:1V UNLESS OTHERWISE NOTED  
 3. ALL FILL SLOPES AT 2H:1V

REVISIONS			
NO.	DESCRIPTION	DATE	BY

**JE FULLER**  
 HYDROLOGY & GEOMORPHOLOGY, INC.

8400 S Kyrene Rd, STE 201 Tempe, AZ 85284  
 1 W Deer Valley Rd, STE 101 Phoenix, AZ 85027  
 40 E Helen St Tucson, AZ 85705

480 752 2124 623 889 0166 520 623 3112  
 www.jefuller.com

**COFFEE POT DRAINAGE BASIN IMPROVEMENTS**  
**SEDONA, AZ**

JOB NO: P2307.01  
 DATE: MAY 17  
 SCALE: 1"=10FT  
 DRAWN: JRB  
 DESIGN: JRB  
 CHECKED: ROL

**SEDIMENT BASIN GRADING PLAN**

Call at least two full working days before you begin excavation.

**ARIZONA 811**  
 Arizona One-Stop, Inc.  
 Dial 8-1-1 or 1-800-STAKE-IT (782-6348)  
 In Maricopa County: (602) 263-1100

DRAWING NO. **G-1**

SHT NO. **12** OF **21**

EXPIRES 06/30/2017

FILE: X:\projects\Agency\Sedona\CoffeePot\_DrainageImprovements\acad\Plans\Grading\_sheets.dwg <<C3D Imperial>>