



City of Sedona Wastewater Department

102 Roadrunner Drive Sedona, AZ 86336
(928) 204-7111 • Fax: (928) 282-5348

To Whom It May Concern:

The City of Sedona, Arizona is issuing **Addendum # 4** to the plans and specifications as originally issued at the time of solicitation for bids for the **Wastewater Collection System Improvements – LS Improvements.** For any bid to be considered responsible and responsive, receipt of this addendum must be acknowledged.

As specified in the Instructions to Bidders this Addendum upon issuance has become a part of the Contract Documents.

This Addendum consists of 15 pages including this page. Noted changes to the Contract Documents are: 3 changes or additions to the advertisement, information, contract, forms, bid proposal/schedule, or other front end portions of the Bid Documents up to, but excluding the Special Conditions; 0 changes or additions to plan drawing sheets; and 2 changes or additions to Special Conditions, General Conditions, Technical Specifications, or other. Any changes or additions to the Bid Documents provided by this addendum or other addenda shall be used in lieu of the originally issued Bid Documents for which they change, replace, or supplement in order to submit a responsive bid.

This Addendum clarifies the following:

1. REQUEST FOR INFORMATION

- 1.1. Question** – We just received the quote for the pump packages for both sites-the costs quoted are quite a bit below what is listed on provided bid schedule-is it possible for us to just fill in the actual amount? Or is the value in bid schedule to be treated as an "allowance" for purchase?

Response – The new price is reflected in the new bid schedule..

2. *This Addendum changes the following:*

1. ADVERTISEMENT FOR BIDS

Following the Addendum 3 Changes, Replace the first sentence of the first paragraph on Page 2 of the Contract Documents written as "Sealed bids for the construction of the Wastewater Collection System Improvements – LS Improvements will be received by the Public Works Department, located at 108 Roadrunner Drive, Sedona, Arizona, until 3:30 P.M. local time, March 4, 2019." **with the following:**

"Sealed bids for the construction of the Wastewater Collection System Improvements – LS Improvements will be received by the Public Works Department, located at 108 Roadrunner Drive, Sedona, Arizona, until 3:30 P.M. local time, March 6, 2019."

2. ADVERTISEMENT FOR BIDS

Following the Addendum 3 Changes, Replace the fourth listed item under first paragraph on page 3, written as "AND RECEIVED: At the Public Works Department until 3:30 P.M. local time, March 4, 2019 (as determined by reference to www.time.gov ref Arizona area)" **with the following:**

"AND RECEIVED: At the Public Works Department until 3:30 P.M. local time, March 6, 2019 (as determined by reference to www.time.gov ref Arizona area)".

3. TECHNICAL SPECIFICATIONS (CHAPEL)

Technical Specifications, Chapel Lift Station Improvements, Division 13-Special Construction, Section 13105 Package Lift Station. Replace the number in the 2nd column of the 7th row in the table shown in section 1.6-D. Pump Design Criteria on page 10 of 32, written as “72” **with the following:**
“15”

4. TECHNICAL SPECIFICATIONS (CHAPEL)

Technical Specifications, Chapel Lift Station Improvements, Division 13-Special Construction, Section 13105 Package Lift Station. Replace the second sentence in the paragraph under the heading “Requirements” of section 2.2-T. Lift Station Pumps on page 20 of 32, written as “Each pump shall be equipped with a 72 HP submersible electric motor, connected for operation on 460 volts, 3 phase, 60 hertz, with 50 feet of submersible cable (SUBCAB) suitable for submersible pump applications.” **with the following:**
“Each pump shall be equipped with a 15 HP submersible electric motor, connected for operation on 460 volts, 3 phase, 60 hertz, with 50 feet of submersible cable (SUBCAB) suitable for submersible pump applications.”

5. BASE BID SCHEDULE

Base Bid Schedule. Replace the “Base Bid Schedule”, pages 26 and 27 of the Contract Documents **with the following:**
“Base Bid Schedule (Rev.2/28/19)”, pages 26 and 27 as provided in listed attachment 2 of this Addendum 4.

This Addendum includes the following attachments:

1. **The previous highlighted pages from addendum 2 shall be replaced with the following new sheet attachments:** Two (2) highlighted plan sheets, sheet 10 of 32 (DT1) for Chapel Lift Station; and sheet 10 of 36 (DT1) for Mystic Hills Lift Station, indicating materials (highlighted) as part of the City’s pre-negotiated pricing as shown in the Base Bid Schedule.
2. Base Bid Schedule (Rev. 2/28/19), pages 26 and 27.
3. Copies of the latest quotations submitted to the City for the Package Lift Station Systems, labeled as follows:
 - 3.1. QUOTATION #:20190225-007DPEL, DATE: FEBRUARY 28, 2019, JOB NAME: CHAPEL LIFT STATION from JCH and consisting of a total of 4 pages.
 - 3.2. QUOTATION #:20190225-007DPEL, DATE: FEBRUARY 28, 2019, JOB NAME: MYSTIC LIFT STATION from JCH and consisting of a total of 4 pages.

END OF ADDENDUM #4

ACKNOWLEDGEMENT

I have received addendum # 4 for the Wastewater Collection System Improvements – LS Improvements as described above and acknowledge it as part of the Contract Documents for the project.

Signature

Date

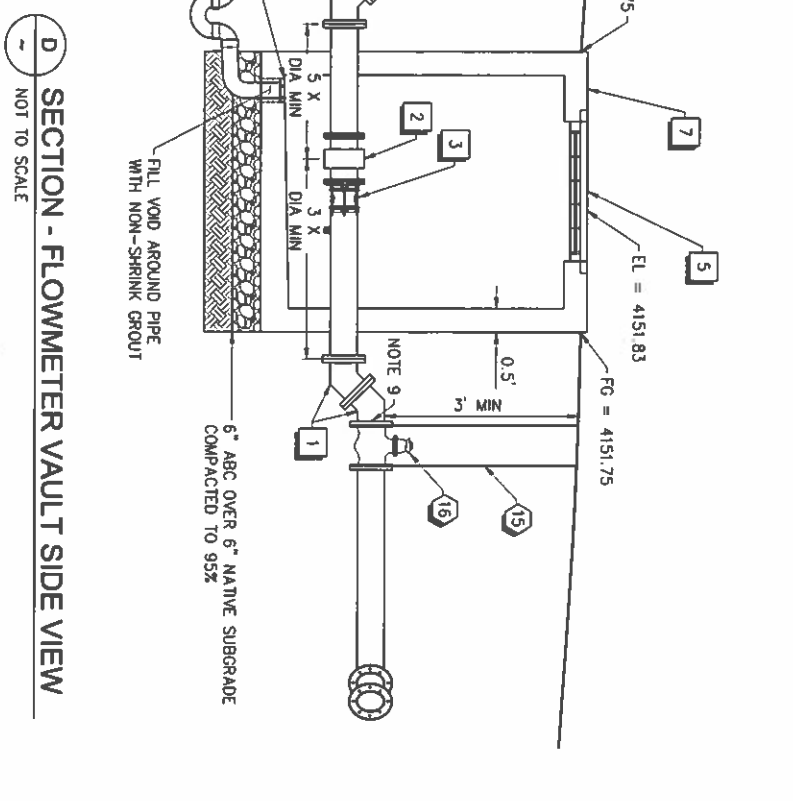
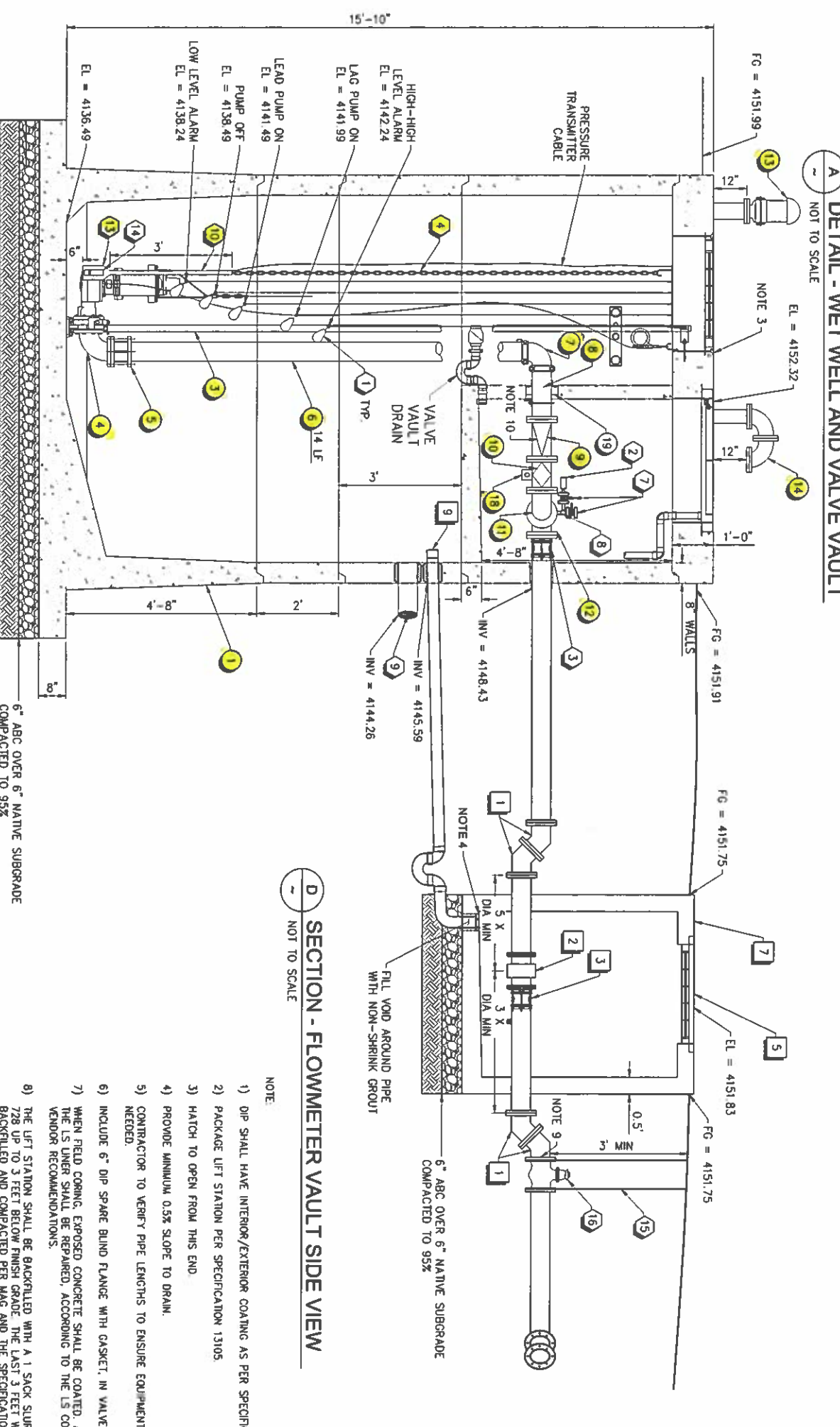
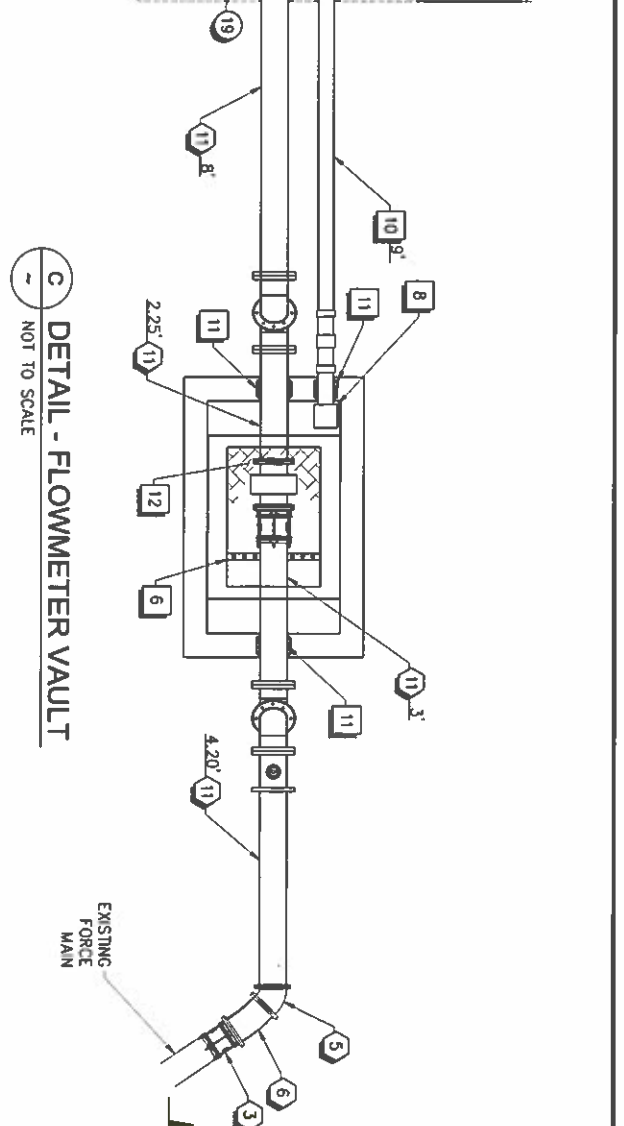
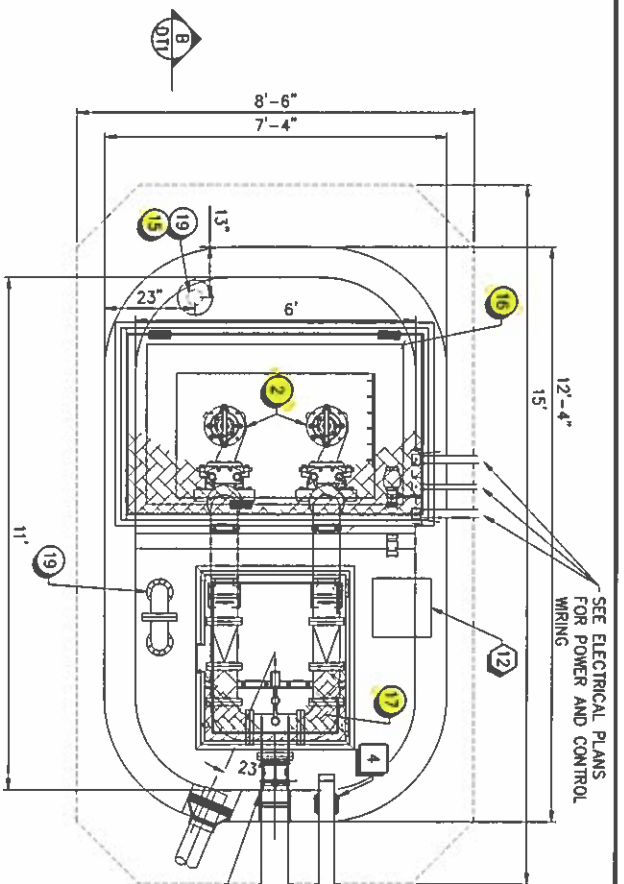
Print Business Name

Addendum # 4 issued by Roxanne Holland, PE, Wastewater Manager, City of Sedona



Roxanne Holland, PE Wastewater Manager

2/28/19
Date



B SECTION - LIFT STATION INTERIOR ELEVATION VIEW
NOT TO SCALE

A DETAIL - WET WELL AND VALVE VAULT
NOT TO SCALE

C DETAIL - FLOWMETER VAULT
NOT TO SCALE

D SECTION - FLOWMETER VAULT SIDE VIEW
NOT TO SCALE

- LIFT STATION PACKAGE**
- 1) RCG11 WET WELL AND VALVE VAULT BY AODCASTLE PRECAST, CONSTRUCTED PER ASTM C990 (PRECAST WATER AND WASTEWATER STRUCTURES).
 - 2) WP3202 SH 3-274 IMPELLER FLYGT PUMP
 - 3) SST GUIDE RAILS
 - 4) PUMP BASE
 - 5) COUPLING
 - 6) DIP, LENGTH PER PLANS
 - 7) 6" METALIC COUPLING 90° ELBOW TYP. 2
 - 8) FLANGE X GROVE END PIPE
 - 9) 6" AFOCO CWS-6000A SINKING CHECK VALVE OR APPROVED EQUAL WITH THE FOLLOWING SET PARAMETERS:
STAGE 1 - 90% CLOSURE IN 6 SECONDS
STAGE 2 - 95% CLOSURE IN 12-15 SECONDS
STAGE 3 - 100% CLOSURE IN 25-30 SECONDS
 - 10) 6" PLUG VALVE TYP. 2
 - 11) 6" DIP 90° ELBOW TYP. 2
 - 12) 6" DIP TEE WITH FLAT BOSS WITH 2" THREADED TAP
 - 13) WAGER 1800 MARINE COLOR CONTROL UNIT OR APPROVED EQUAL WITH UV RESISTANT PAINT
 - 14) 4" DIP VENT WITH #14 SS SCREEN AT OPENING (SCREEN BY CONTRACTOR)
 - 15) 4" DIP VENT STUB WITH FLANGE. FLANGE TO EXTEND 12" ABOVE TOP OF WET WELL.
 - 16) 36" X 54" HATCH WITH SAFETY GRATE (300G PEDESTRIAN RATED)
 - 17) 30" X 36" HATCH WITH SAFETY GRATE (300G PEDESTRIAN RATED)
 - 18) HORIZONTAL SS PIPE SUPPORT
 - 19) CORING AND LINK SEAL

- BASE BID ITEMS**
- 1) LEVEL FLOAT SYSTEM
 - 2) 4" DIA. PRESSURE GAUGE (0-160 PS) WITH SS SNUBBER AND DIAPHRAGM
 - 3) ROMAC RFGA WITH FUSION BONDED EPOXY INTERIOR OR APPROVED EQUAL
 - 4) 316 STAINLESS STEEL CHAIN, 1/2" LENGTH AS REQUIRED.
 - 5) 6" DIP 45° ELBOW (FL X RL)
 - 6) 6" DIP 11.25° ELBOW, FLANGE X FLANGE
 - 7) 1" SS BALL VALVE
 - 8) 2" TO 1" SS REDUCER, 1" SS PIPE AND 1" SS TEE
 - 9) INLET LOCATION, CONTRACTOR TO FIELD CORE INLET LINK SEAL PART OF LS PACKAGE.
 - 10) 1 1/2" 316 SS PIPE WITH WELDED HANDLE TO ATTACH CHAIN
 - 11) 6" DIP LENGTH PER PLANS
 - 12) REINSTALL SAFETY HARNESS PLATE PER DETAIL W. DWG 015
 - 13) 1 1/2" X 3" CAST IRON REDUCER
 - 14) SUBMERSIBLE PRESSURE TRANSMITTER WITH 55' CABLE
 - 15) VALVE BOX AND COVER PER MAG STD DTL 391, TYPE A COVER SHALL SAY "SEWER"
 - 16) 6" DEZURK 100K PORT ECCENTRIC PLUG VALVE (PEP) WITH GS-6A-N GEAR BOX
- BID ALTERNATE ITEMS**
- 1) 6" DIP 45° ELBOW (FL X FL)
 - 2) 6" FLOWMETER
 - 3) ROMAC RFGA WITH FUSION BONDED EPOXY INTERIOR OR APPROVED EQUAL
 - 4) FIELD CORED AND LINK SEAL BY CONTRACTOR, LINK SEAL BY GPT WITH SS HARDWARE
 - 5) SAFETY GRATE PER SPECIFICATION 13105.2 2(E)(2). SIZE TO FIT OPENING.
 - 6) PIPE SUPPORT COPPER B-LINE B22SS CHANNEL, ANK-37-225 WEDGE ANCHOR AND BR115 COLUMB SUPPORT OR APPROVED EQUAL. ALL COMPONENTS SHALL BE STAINLESS STEEL.
 - 7) 3/8" X 6" DEEP VAULT CONSTRUCTION PER ASTM C990 (PRECAST WATER AND WASTEWATER STRUCTURES) BOTTOM SLOPE TOWARDS DRAIN
 - 8) 1" X 6" X 6" FIBERGLASS GRATE FLUSH WITH SURFACE
 - 9) 4" TIDEFLX TR-2 RUBBER CHECK VALVE WITH SS CLAMPS OR APPROVED EQUAL
 - 10) 4" SCH 80 PVC, LENGTH PER PLAN
 - 11) LINK SEAL BY GPT WITH 316 SS HARDWARE (BY CONTRACTOR)
 - 12) 3" X 2" OPENING MINIMUM, LOCKABLE H-20 TRAFFIC RATED HATCH, PER SPECIFICATION 08122

NOTE:

- 1) DIP SHALL HAVE INTERIOR/EXTERIOR COATING AS PER SPECIFICATION 09910.
- 2) PACKAGE LIFT STATION PER SPECIFICATION 13105
- 3) HATCH TO OPEN FROM THIS END.
- 4) PROVIDE MINIMUM 0.5% SLOPE TO DRAIN.
- 5) CONTRACTOR TO VERIFY PIPE LENGTHS TO ENSURE EQUIPMENT FITS AS NEEDED.
- 6) INCLUDE 6" DIP SPARE BLIND FLANGE WITH GASKET, IN VALVE VAULT.
- 7) WHEN FIELD CORING, EXPOSED CONCRETE SHALL BE COATED. ANY DAMAGE TO THE LS LINER SHALL BE REPAIRED, ACCORDING TO THE LS COATING SYSTEM VENDOR RECOMMENDATIONS.
- 8) THE LIFT STATION SHALL BE BACKFILLED WITH A 1 SACK SLURRY PER MAG 728 UP TO 3 FEET BELOW FINISH GRADE. THE LAST 3 FEET WILL BE BACKFILLED AND COMPACTED PER MAG AND THE SPECIFICATIONS.
- 9) DEZURK VALVE SHALL BE INSTALLED SO THAT THE SEAT IS LOCATED ON THE UPSTREAM SIDE OF THE VALVE WHEN CLOSED.
- 10) VALVE REP SHALL CHECK INSTALLATION AND MAKE FIELD ADJUSTMENTS AS NEEDED.

6" ABC OVER 6" NATIVE SUBGRADE
COMPACTED TO 95%

6" ABC OVER 6" NATIVE SUBGRADE
COMPACTED TO 95%



CITY OF SEDONA

SUNRISE ENGINEERING

2155 SOUTH VINEYARD, SUITE 123
MESA, ARIZONA 85210
TEL: 480.788.8500 FAX: 480.788.8699
www.sunrise-eng.com

**MYSTIC HILLS LIFT STATION
IMPROVEMENT PLANS
DETAILS**

REV NO: DATE

DESIGNED: [] DRAWN: [] CHECKED: [] SHEET NO: DT1

Base Bid Schedule

(Rev. 2/28/19)

**City of Sedona – Wastewater Collection System Improvements – LS Improvements
Project # 2019-WW-01**

ITEM NO.	ITEM DESCRIPTION	QTY	UNIT	UNIT PRICE	EXTENDED TOTAL
<u>Chapel Lift Station</u>					
1	Mobilization	1	LS		
2	Demobilization	1	LS		
3	SWPPP	1	LS		
4	Site Demolition	1	LS		
5	Site Work	1	LS		
6	Construction MOPO	1	LS		
7	Site Compound	1	LS		
8	Water Piping	1	LS		
9	Package Lift Station System ¹	1	LS	\$212,734.00	\$212,734.00
10	Non-Package Lift Station Equipment	1	LS		
11	Lift Station Installation	1	LS		
12	Force Main	1	LS		
13	Landscaping	1	LS		
14	Reinstallation of Mystic Hills Backup Generator	1	LS		
15	Site Electrical	1	LS		
16	Instrumentation	1	LS		
17	MCC	1	LS		
18	APS Utility Upgrade	1	LS		
				SUBTOTAL - CHAPEL LIFT STATION	
<u>Mystic Hills Lift Station</u>					
1	Mobilization	1	LS		
2	Demobilization	1	LS		
3	SWPPP	1	LS		
4	Site Demolition	1	LS		
5	Site Work	1	LS		
6	Construction MOPO	1	LS		
7	Site Compound	1	LS		

8	Gravel Access Road	1	LS		
9	Water Piping	1	LS		
10	Gravity Sewer Line	1	LS		
11	Package Lift Station System ¹	1	LS	\$282,564.00	\$282,564.00
12	Non-Package Lift Station Equipment	1	LS		
13	Lift Station Installation	1	LS		
14	Force Main	1	LS		
15	Landscaping	1	LS		
16	Backup Generator	1	LS		
17	Site Electrical	1	LS		
18	Instrumentation	1	LS		
19	MCC	1	LS		
20	APS Utility Upgrade	1	LS		
SUBTOTAL - MYSTIC HILLS LIFT STATION					
TOTAL BID (Subtotal - Chapel Lift Station + Subtotal - Mystic Hills Lift Station)					

CIP: COMPLETE IN PLACE
 Owner reserves the right to vary the quantities shown at their discretion. The contractor will accept the quantities if no corrections are made at the conclusion of the pre-bid meeting. All facilities incidental to the item are included in the unit price estimate. Bid Prices submitted include all local, state and federal taxes.

UNIT PRICES SHALL BE USED WHEN EXTENSION OF UNIT PRICES AND TOTAL AMOUNT CONFLICT. WRITTEN UNIT PRICES SHALL BE USED WHEN WRITTEN AND NUMERICAL UNIT PRICES CONFLICT. BID PRICES SUBMITTED INCLUDE ALL LOCAL, STATE AND FEDERAL TAXES.

The City of Sedona reserves the right to reject all bids, or to award only the base bid, or to award a bid based upon the total of the Base Bid plus additive alternate(s) as selected for award from the additive alternate bid schedule, if additive alternate bid schedule is applicable.

NOTES:
 1 Pre-arranged Lift Station Package equipment/material and pricing. See Special Conditions, Item number 13. Pre-arranged Pricing for Select Lift Station Material/Equipment.

QUOTATION #: 20190225-007DPEL

Page 1 of 4

DATE: FEBRUARY 28, 2019

TO: CITY OF SEDONA

Job Name: CHAPEL LIFT STATION

ATTN: BOB WELCH

Location: SEDONA, AZ
 Quoted By: DOUGLAS PRATT, PE
 ERIC LORING, PE

Bid Date: FEBRUARY 28, 2019

Unless otherwise stated: Prices are firm for 30 days from bid date, payment terms are NET 30 DAYS from shipment. Prices do not include any sales and/or use taxes. Applicable taxes will be added to the invoice at the rate in effect at the time of shipment. Interest shall accrue on past due amounts of 1.5% per month. Freight terms are F.O.B. factory, full freight allowed.

QTY	Description	Each	Total
-----	-------------	------	-------

CHAPEL PACKAGED LIFT STATION SYSTEM

MANUFACTURER: FLYGT & OLDCASTLE (AS SPECIFIED)

LIFT STATION PUMPS

TAG: PUMP 1 AND PUMP 2

- 2 FLYGT MODEL NP-3153 SERIES (EXPLOSION PROOF) SUBMERSIBLE PUMPS WITH HARD-IRON MATERIALS OF CONSTRUCTION, 15 HP, 1755 RPM, 460/3/60 INVERTER DUTY RATED MOTORS.

EACH INSTALLED PUMP SHALL BE SUPPLIED WITH: 4-INCH DISCHARGE ELBOW, 2-INCH (316 SS) UPPER GUIDE BAR BRACKET, 50 FEET OF POWER CABLE, FLS (SEAL LEAKAGE AND TEMPERATURE PROTECTION SWITCH), AND 17- FEET OF 316 STAINLESS STEEL CHAIN AND FLYGT GRIP-EYE LIFTING SYSTEM.

(2-INCH (316 SS) GUIDE RAIL INCLUDED FOR APPROX. 17' STATION DEPTH)

- 2 FLYGT MINI-CAS (MOISTURE AND OVER TEMPERATURE RELAYS (TO BE INSTALLED INTO PUMP CONTROL PANEL BY OTHERS
- 1 HANGING STAINLESS STEEL STILLING WELL WITH CHAIN

QTY	Description	Each	Total
-----	-------------	------	-------

1 OLDCASTLE ONELIFT RC611 PUMP STATION PACKAGE WITH INTEGRAL VALVE VAULT AND EXTERIOR BUOYANCY COLLAR. TOP OF STATION TO FLOOR SHALL NOT EXCEED 17'-10". COMPLETE PACKAGED LIFT STATION WITH VALVES, PIPING, ETC. INTERNAL COATING SHALL BE SEWER SHIELD.

VALVE VAULT PREASSEMBLED AS COMPLETE PACKAGE. OLDCASTLE TO PRE-INSTALL EQUIPMENT AT FACTORY TO MINIMIZE RE-ASSEMBLY TIME AND POTENTIAL FIELD ISSUES.

INCLUDES THE FOLLOWING:

36 X 54 ALUMINUM ACCESS COVER WITH SAFETY GRATING (FALL THROUGH PROTECTION) 300 PSF PEDESTRIAN RATED

30X36 ALUMINUM ACCESS COVER (ABOVE THE VAULT) 300 PSF PEDESTRIAN RATED WITH SAFETY GRATING

ALL PIPING INSTALLED IN STATION AS 6-INCH DUCTILE IRON, WITH 4 X 6 ECCENTRIC REDUCER FROM PUMP ELBOW, 316 SS GUIDE RAIL SYSTEM, 316 SS SUPPORTS AND 316 SS FASTENERS ETC. WITH COATINGS AS PER SPECIFICATIONS

PLUG AND CHECK VALVES AS SPECIFIED.

WET WELL VENT WITH ODOR CONTROL CANNISTER FOR WET WELL AND DIP VENT FOR VALVE BOX. INSECT SCREEN ON VALVE BOX VENT IS BY OTHERS. APPLICABLE LINK SEALS WILL BE PROVIDED FOR VENTS

4-GANG ELECTRICAL COUPLING PLATE AND INTERIOR SEAL FITTINGS, MOUNTED TO STATION FOR INCOMING ELECTRICAL CONDUIT AND CONDUCTORS (PUMP POWER CABLE, TRANSDUCER AND FLOATS). STAINLESS STEEL PUMP/FLOAT CABLE HOOKS AND KELLUM GRIPS FOR POWER CABLES.

QTY (1) MANHOLE BOOT PROVIDED FOR INLET. INLET PIPING IS BY OTHERS.

EXTERIOR CONDUITS TO STATION, PULLING OF CABLES/CONDUCTORS TO PUMP CONTROL PANEL AND PROPER SEALING TO ALLOW FOR PUMP MAINTENANCE AND PROTECT FROM BASES BY OTHERS.

ASSOCIATED TAPS TO CONNECT GAUGES TO 6" DISCHARGE PIPING.

QTY	Description	Each	Total
LOT	SPARE PARTS (AS SPECIFIED) UPPER AND LOWER BEARING, UPPER AND LOWER MECHANICAL SEALS, O-RING KIT NO SPECIAL TOOLS REQUIRED, NONE QUOTED		
LOT	SUBMITTALS, O&M MANUALS TRAINING START-UP SERVICE (1-TRIP, ½ DAY, 1 MAN)		

TOTAL PRICE	<u>FREIGHT INCLUDED</u>	\$195,888.00
	FOB FACTORY	
	TAX (8.6%)	\$16,846.37
	TOTAL	\$212,734.37

DELIVERY SCHEDULE	SUBMITTALS	3-4 WEEKS
	PUMPS	11-13 WEEKS*
	WET WELL	8-10 WEEKS* #
	*AFTER APPROVED SUBMITTAL	
	#ADDITIONAL LEAD TIME REQUIRED FOR DEZERIK PLUG VALVES, DEZERIK VALVES WOULD INCREASE LEAD TIME TO 10-12 WEEKS, STANDARD PLUG VAVLES ARE INCLUDED	

NOTES, CLARIFICATIONS, EXCEPTIONS:

1. INSTALLATION OF CONDUITS AND PULLING OF WIRES BETWEEN WET WELL, JUNCTION BOX AND CONTROL PANEL/MCC IS BY OTHERS.
2. OFFLOADING AND SETTING OF MATERIALS IS BY OTHERS. MAX SINGLE PICK WEIGHT OF WET WELL IS 17-TONS.
3. ANY FIELD CORING IS BY OTHERS. CORES MAY NOT OCCUR WITHIN 4" OF SEAM.
4. THE CONCRETE COATING ON THE INSIDE OF THE WET WELL WILL BE SEWER SHIELD, AS PREFERRED BY CITY OF SEDONA.
5. WET WELL TO BE DESIGNED TO WITHSTAND ADDITIONAL CMU WALL LOADINGS PER SPECIFICATION.
6. INTERNAL RISER PIPING AND GUIDERAILS WILL BE SHIPPED LOOSE WITH THE STATION. THEY WILL BE PRECUT AND READY TO BE ASSEMBLED IN THE FIELD BY OTHERS.
7. STANDARD OLDCASTLE MATCO-NORCO MODEL 120WC CHECK VALVE TO BE PROVIDE PER SPEC.
8. ANY FIELD CORING OF WET WELL IS BY OTHERS. ANY COATING PATCHES INDUCED BY FIELD CORING IS BY OTHERS AND SHALL BE DONE PER MANUFACTURES RECOMMENDATION.
9. SPECIFIED PUMPS IN SPEC SECTION ARE INCORRECT. 15HP PUMPS PROVIDED IN LEUI OF 72HP PUMPS SPECIFIED. THIS IS DUE TO PRIOR KNOWLEDGE OF DESIGN WITH ENGINEER.
10. ALL PIPING OUTSIDE OF STATION IS BY OTHERS.
11. WET WELL STRUCTRUAL DESIGN CALCULATIONS SEALED BY A PROFESSIONAL ENGINEER IN THE STATE OF ARIZONA SHALL BE PROVIDED.

WE ARE NOT INCLUDING:

INSTALLATION, CONTROLS, MOTOR STARTERS, ANCHOR BOLTS FOR REATTACHING CRANE PEDESTAL, SEISMIC CALCS, JUNCTION BOXES, SPECIAL PUMP TESTING OTHER THAN FLYGT STANDARD, SPECIAL PUMP COATINGS OTHER THAN FLYGT STANDARD, OR ITEMS NOT EXPLICITLY DESCRIBED ABOVE.

PLEASE REVIEW OUR SCOPE OF SUPPLY CAREFULLY AND ADVISE IF WE ARE NOT COMPLETE WITH THE EQUIPMENT REQUIRED.

THANK YOU FOR THE OPPORTUNITY TO QUOTE THE ABOVE WORK!

ACCEPTED BY:

ROXANNE HOLLAND PE WASTEWATER MANAGER
CITY OF SEDONA

*QUOTATION WILL NOT BE CONSIDERED FINAL UNTIL ACCEPTED, AS RECOGNIZED BY SIGNATURE OF THE CITY OF SEDONA, WASTEWATER MANAGER

QUOTATION #: 20190225-007DPEL

Page 1 of 4

DATE: FEBRUARY 28, 2019

TO: CITY OF SEDONA

Job Name: MYSTIC LIFT STATION

ATTN: BOB WELCH

Location: SEDONA, AZ
 Quoted By: DOUGLAS PRATT, PE
 ERIC LORING, PE

Bid Date: FEBRUARY 28, 2019

Unless otherwise stated: Prices are firm for 30 days from bid date, payment terms are NET 30 DAYS from shipment. Prices do not include any sales and/or use taxes. Applicable taxes will be added to the invoice at the rate in effect at the time of shipment. Interest shall accrue on past due amounts of 1.5% per month. Freight terms are F.O.B. factory, full freight allowed.

QTY	Description	Each	Total
-----	-------------	------	-------

MYSTIC PACKAGED LIFT STATION SYSTEM

MANUFACTURER: FLYGT & OLDCASTLE (AS SPECIFIED)

LIFT STATION PUMPS

TAG: PUMP 1 AND PUMP 2

- 2 FLYGT MODEL NP-3202 SERIES (EXPLOSION PROOF) SUBMERSIBLE PUMPS WITH HARD-IRON MATERIALS OF CONSTRUCTION, 72 HP, 3560 RPM, 460/3/60 INVERTER DUTY RATED MOTORS.

EACH INSTALLED PUMP SHALL BE SUPPLIED WITH:
 4-INCH DISCHARGE ELBOW, 3-INCH (316 SS) UPPER GUIDE BAR BRACKET, 50 FEET OF POWER CABLE, FLS (SEAL LEAKAGE AND TEMPERATURE PROTECTION SWITCH), AND 15' OF 316 STAINLESS STEEL CHAIN AND FLYGT GRIP-EYE LIFTING SYSTEM

(3-INCH (316 SS) GUIDE RAIL INCLUDED FOR APPROX. 15' STATION DEPTH)

- 2 FLYGT MINI-CAS (MOISTURE AND OVER TEMPERATURE RELAYS (TO BE INSTALLED INTO PUMP CONTROL PANEL BY OTHERS
- 1 HANGING STAINLESS STEEL STILLING WELL WITH CHAIN

QTY	Description	Each	Total
1	<p>OLDCASTLE ONELIFT RC611 PUMP STATION PACKAGE WITH INTEGRAL VALVE VAULT AND EXTERIOR BUOYANCY COLLAR. TOP OF STATION TO FLOOR SHALL NOT EXCEED 15'-10". COMPLETE PACKAGED LIFT STATION WITH VALVES, PIPING, ETC. INTERNAL COATING SHALL BE SEWER SHIELD.</p> <p>VALVE VAULT PREASSEMBLED AS COMPLETE PACKAGE. OLDCASTLE TO PRE-INSTALL EQUIPMENT AT FACTORY TO MINIMIZE RE-ASSEMBLY TIME AND POTENTIAL FIELD ISSUES.</p> <p>INCLUDES THE FOLLOWING:</p> <p>36 X 54 ALUMINUM ACCESS COVER WITH SAFETY GRATING (FALL THROUGH PROTECTION) 300 PSF PEDESTRIAN RATED</p> <p>30X36 ALUMINUM ACCESS COVER (ABOVE THE VAULT) 300 PSF PEDESTRIAN RATED WITH SAFETY GRATING</p> <p>ALL PIPING INSTALLED IN STATION AS 6-INCH DUCTILE IRON, WITH 4 X 6 ECCENTRIC REDUCER FROM PUMP ELBOW, 316 SS GUIDE RAIL SYSTEM, 316 SS SUPPORTS AND 316 SS FASTENERS ETC. WITH COATINGS PER SPECIFICATIONS</p> <p>PLUG AND CHECK VALVES AS SPECIFIED.</p> <p>WET WELL VENT WITH ODOR CONTROL CANNISTER FOR WET WELL AND DIP VENT FOR VALVE BOX. INSECT SCREEN ON VALVE BOX VENT IS BY OTHERS. APPLICABLE LINK SEALS WILL BE PROVIDED FOR VENTS</p> <p>4-GANG ELECTRICAL COUPLING PLATE AND INTERIOR SEAL FITTINGS, MOUNTED TO STATION FOR INCOMING ELECTRICAL CONDUIT AND CONDUCTORS (PUMP POWER CABLE, TRANSDUCER AND FLOATS). STAINLESS STEEL PUMP/FLOAT CABLE HOOKS AND KELLUM GRIPS FOR POWER CABLES.</p> <p>QTY (1) MANHOLE BOOT PROVIDED FOR INLET. INLET PIPING IS BY OTHERS.</p> <p>EXTERIOR CONDUITS TO STATION, PULLING OF CABLES/CONDUCTORS TO PUMP CONTROL PANEL AND PROPER SEALING TO ALLOW FOR PUMP MAINTENANCE AND PROTECT FROM BASES BY OTHERS.</p> <p>ASSOCIATED TAPS TO CONNECT GAUGESTO 6" DISCHARGE PIPING.</p>		

QTY	Description	Each	Total
LOT	SPARE PARTS (AS SPECIFIED) UPPER AND LOWER BEARING, UPPER AND LOWER MECHANICAL SEALS, O-RING KIT NO SPECIAL TOOLS REQUIRED, NONE QUOTED		
LOT	SUBMITTALS, O&M MANUALS TRAINING START-UP SERVICE (1-TRIP, ½ DAY, 1 MAN)		

TOTAL PRICE	<u>FREIGHT INCLUDED</u>	\$260,188.00
	FOB FACTORY	
	TAX (8.6%)	\$22,376.17
	TOTAL	\$282,564.17

DELIVERY SCHEDULE	SUBMITTALS	3-4 WEEKS
	PUMPS	11-13 WEEKS*
	WET WELL	8-10 WEEKS* #
	*AFTER APPROVED SUBMITTAL	
	#ADDITIONAL LEAD TIME REQUIRED FOR DEZERIK PLUG VALVES, DEZERIK VALVES WOULD INCREASE LEAD TIME TO 10-12 WEEKS, STANDARD PLUG VAVLES ARE INCLUDED	

NOTES, CLARIFICATIONS, EXCEPTIONS:

1. INSTALLATION OF CONDUITS AND PULLING OF WIRES BETWEEN WET WELL, JUNCTION BOX AND CONTROL PANEL/MCC IS BY OTHERS.
2. OFFLOADING AND SETTING OF MATERIALS IS BY OTHERS. MAX SINGLE PICK WEIGHT OF WET WELL IS 17-TONS.
3. ANY FIELD CORING IS BY OTHERS. CORES MAY NOT OCCUR WITHIN 4" OF SEAM.
4. THE CONCRETE COATING ON THE INSIDE OF THE WET WELL WILL BE SEWER SHIELD, AS PREFERRED BY CITY OF SEDONA.
5. INTERNAL RISER PIPING AND GUIDERAILS WILL BE SHIPPED LOOSE WITH THE STATION. THEY WILL BE PRECUT AND READY TO BE ASSEMBLED IN THE FIELD BY OTHERS.
6. APCO CVS-6000A CHECK VALVE TO BE PROVIDED PER PLAN IN LEIU OF SPECIFIED MATCO-NORCO VALVE PER OWNER PREFERENCE ON THIS STATION.
7. ANY FIELD CORING OF WET WELL IS BY OTHERS. ANY COATING PATCHES INDUCED BY FIELD CORING IS BY OTHERS AND SHALL BE DONE PER MANUFACTURES RECOMMENDATION.
8. ALL PIPPING OUTSIDE OF STATION IS BY OTHERS
9. WET WELL STRUCTURE DESIGN CACLULATIONS SEALED BY A PROFESSINAL ENGINEER IN THE STATE OF ARIZONA SHALL BE PROVIDED.

WE ARE NOT INCLUDING:

INSTALLATION, CONTROLS, MOTOR STARTERS, ANCHOR BOLTS FOR REATTACHING CRANE PEDESTAL, SEISMIC CALCS, JUNCTION BOXES, SPECIAL PUMP TESTING OTHER THAN FLYGT STANDARD, SPECIAL PUMP COATINGS OTHER THAN FLYGT STANDARD, OR ITEMS NOT EXPLICITLY DESCRIBED ABOVE.

PLEASE REVIEW OUR SCOPE OF SUPPLY CAREFULLY AND ADVISE IF WE ARE NOT COMPLETE WITH THE EQUIPMENT REQUIRED.

THANK YOU FOR THE OPPORTUNITY TO QUOTE THE ABOVE WORK!

ACCEPTED BY:

ROXANNE HOLLAND PE WASTEWATER MANAGER
CITY OF SEDONA

*QUOTATION WILL NOT BE CONSIDERED FINAL UNTIL ACCEPTED, AS RECOGNIZED BY SIGNATURE OF THE CITY OF SEDONA, WASTEWATER MANAGER