



CITY OF SEDONA

Climate

Action Plan

2020



Guidelines for the Open House

At the bottom of your screen, click Q&A to type in a question.

We will take a break halfway through the presentation for questions and then accept questions again at the end of the presentation.

Please be civil.

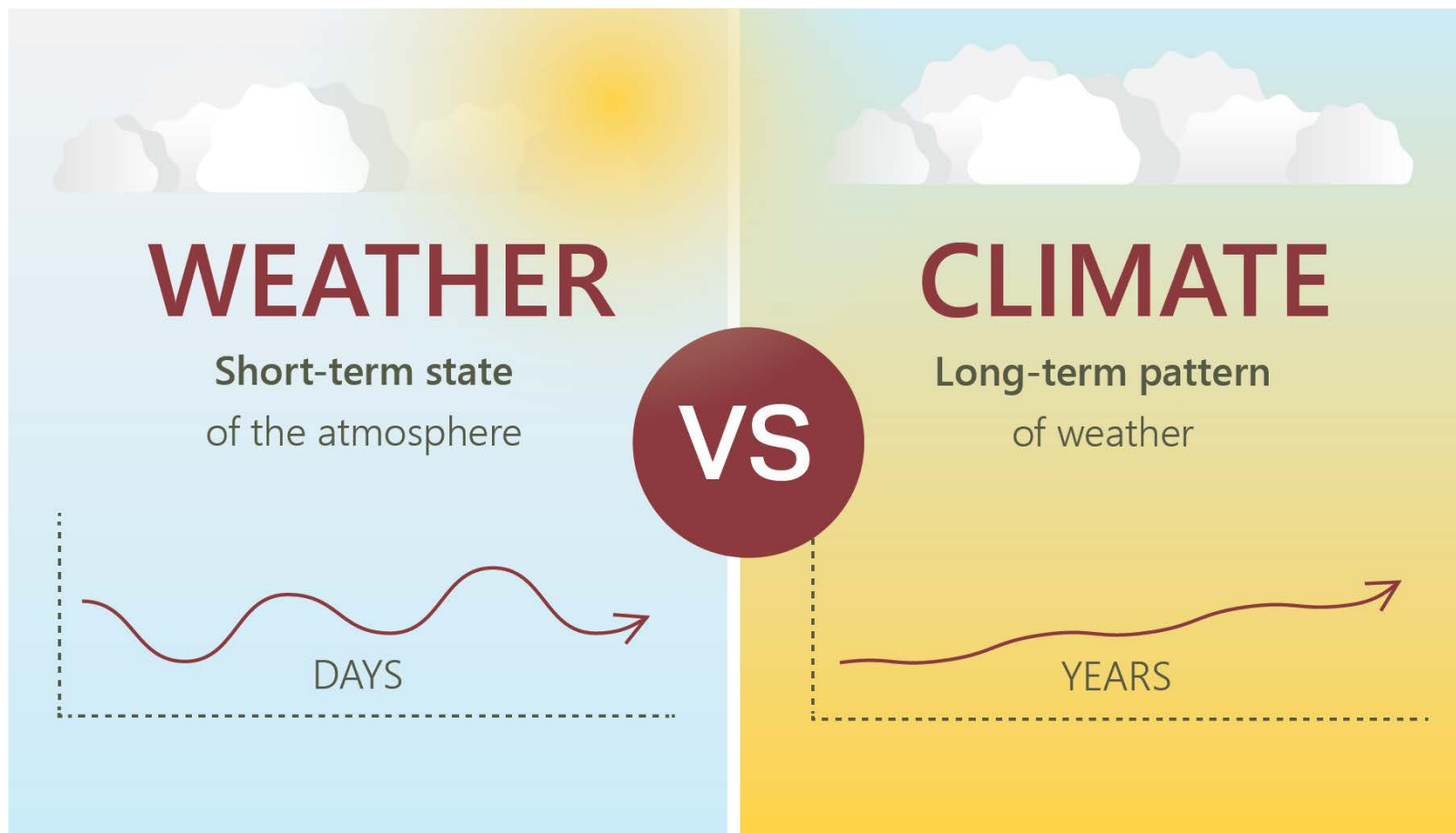
Due to incidences of trolling on Zoom, video and microphones are turned off for attendees.



What is **climate change**?

Climate change is a shift in the long-term, average weather pattern.

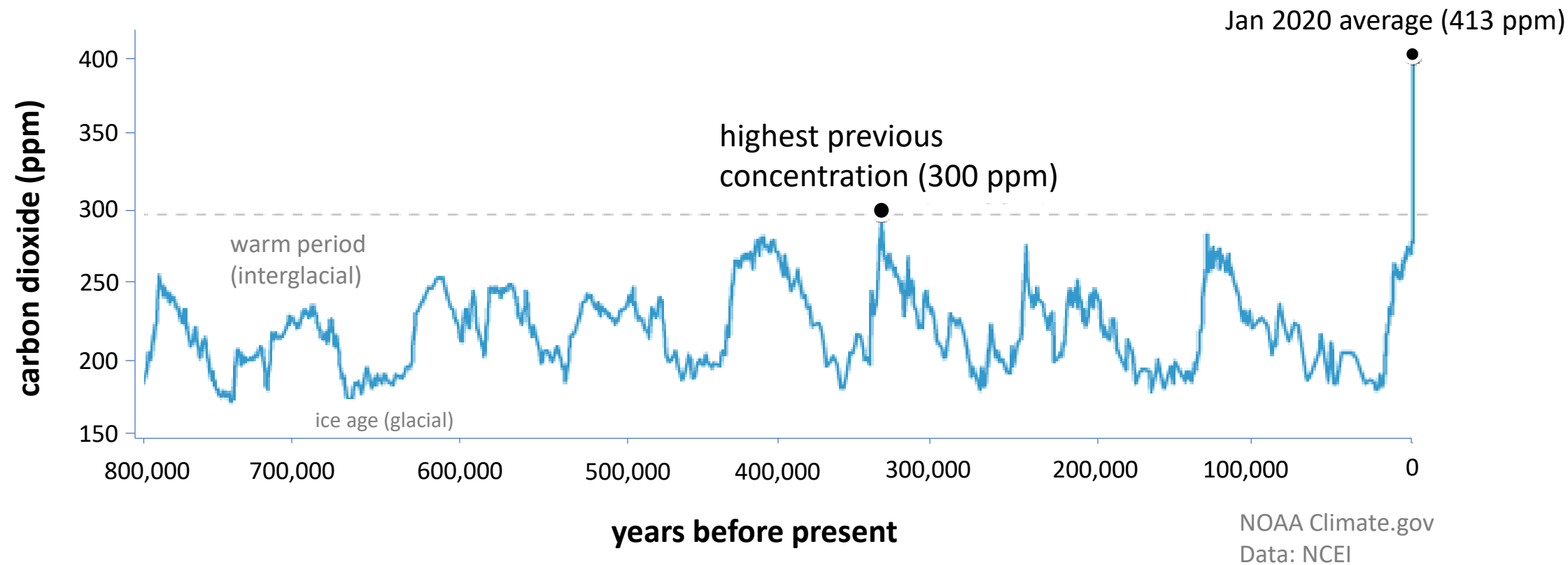
There is still some **variability** (e.g., some cooler years during the long-term upward trend in temperature).






Human-caused emissions—especially from burning fossil fuels—are driving climate change

CO₂ during ice ages and warm periods for the past 800,000 years





How is the climate changing in Sedona?

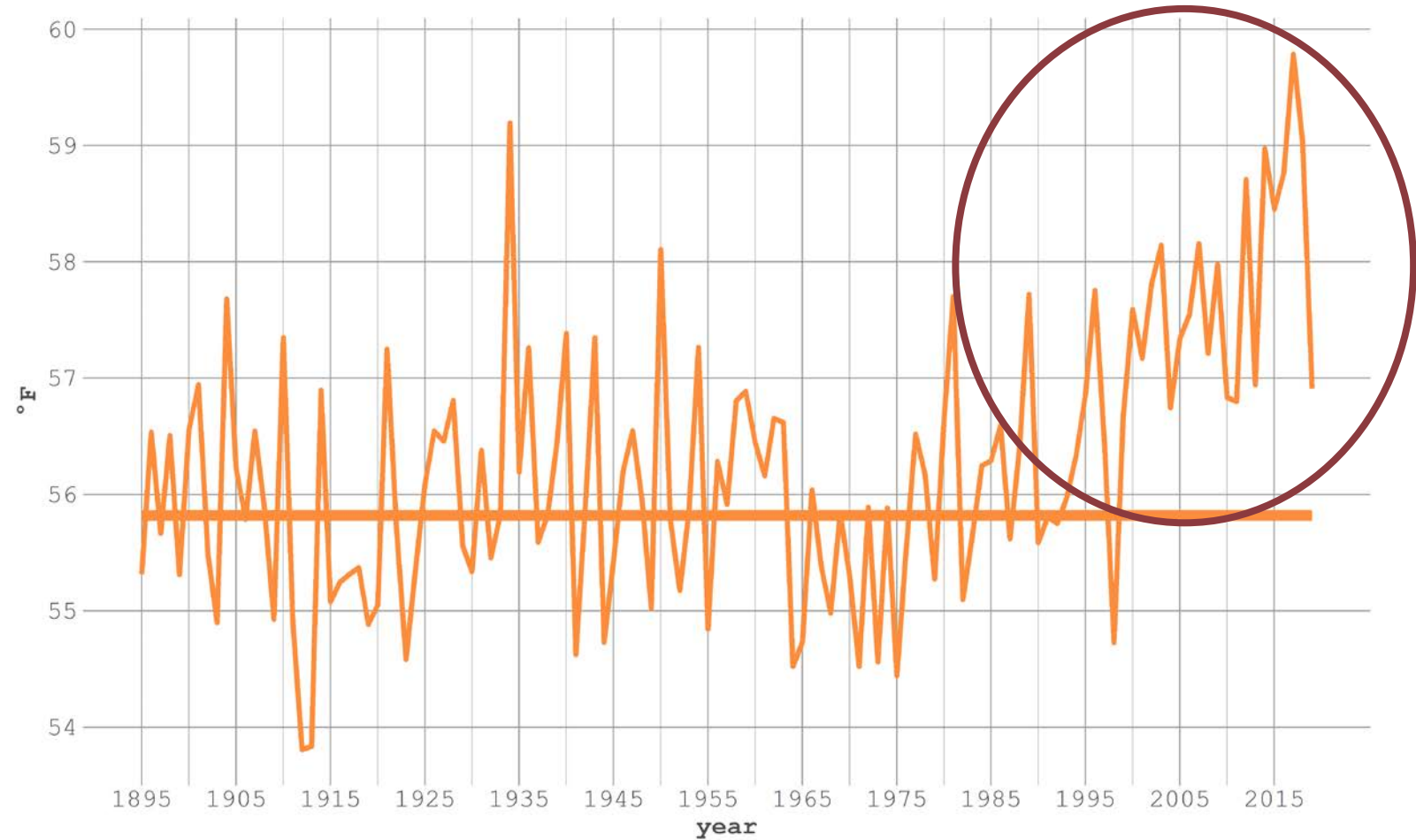



Temperatures have increased in the Verde Valley

Annual average temperature

Verde Valley, AZ

1961-1990 average: 55.8°F





Poll: Test your climate knowledge

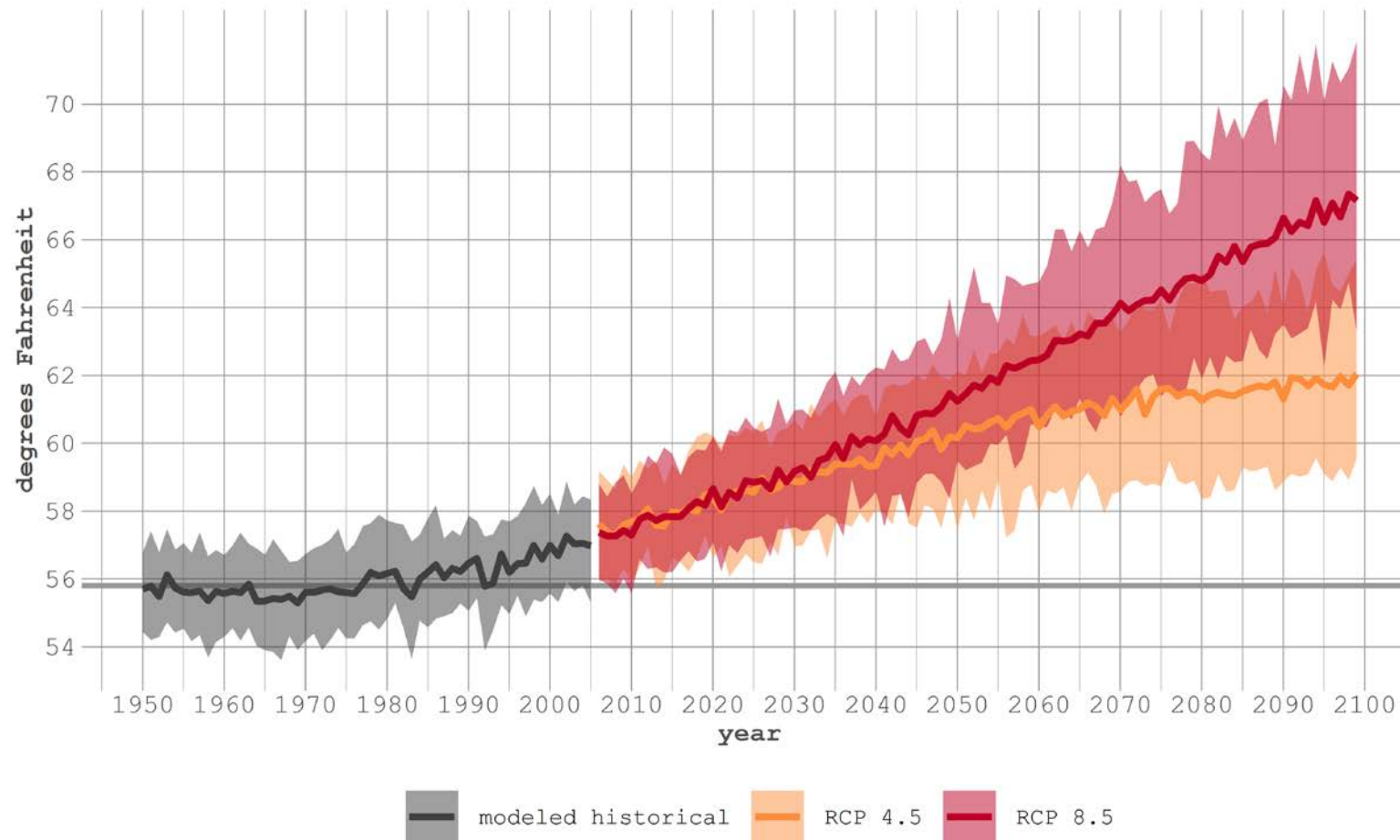


Temperatures will continue to increase

Projected changes in annual average temperature

Verde Valley, AZ

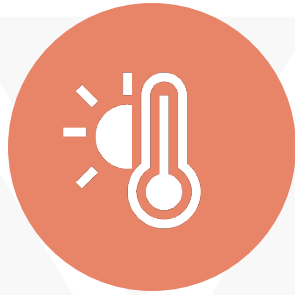
1961-1990 average: 55.8°F





How could
climate
change **affect**
Sedona?

Compared to today, by 2050 we expect to have, on average:



Hotter temperatures



More severe drought conditions



More intense storms and variable precipitation



Increased wildfire and smoke risk



Increased damage from pests due to hotter temperatures and drought-stressed vegetation

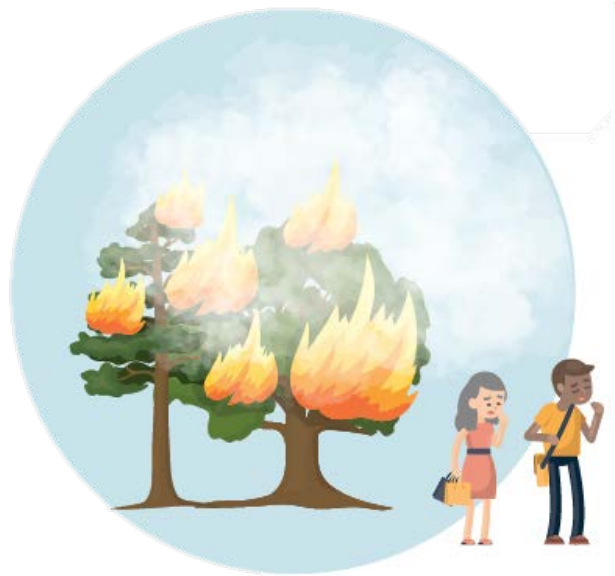


More severe erosion from extreme precipitation events



Lower water quality

What do the changes mean?



More insect-borne diseases and respiratory health concerns



More extreme heat and drier conditions



More intense rainstorms are possible



Potential for less tourism



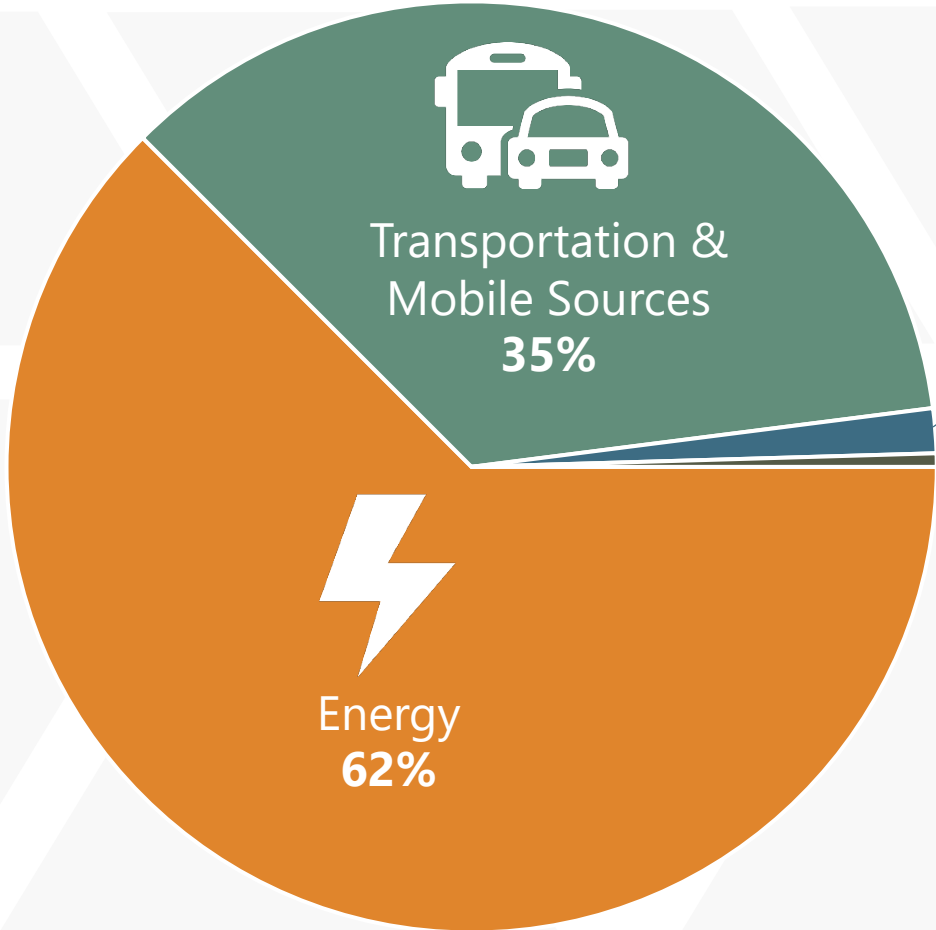
Emissions in
Sedona are
contributing
to climate
change



Sedona's Top Emissions Sources

#1
Powering Buildings
(including heating & cooling)

#2
Vehicle Emissions



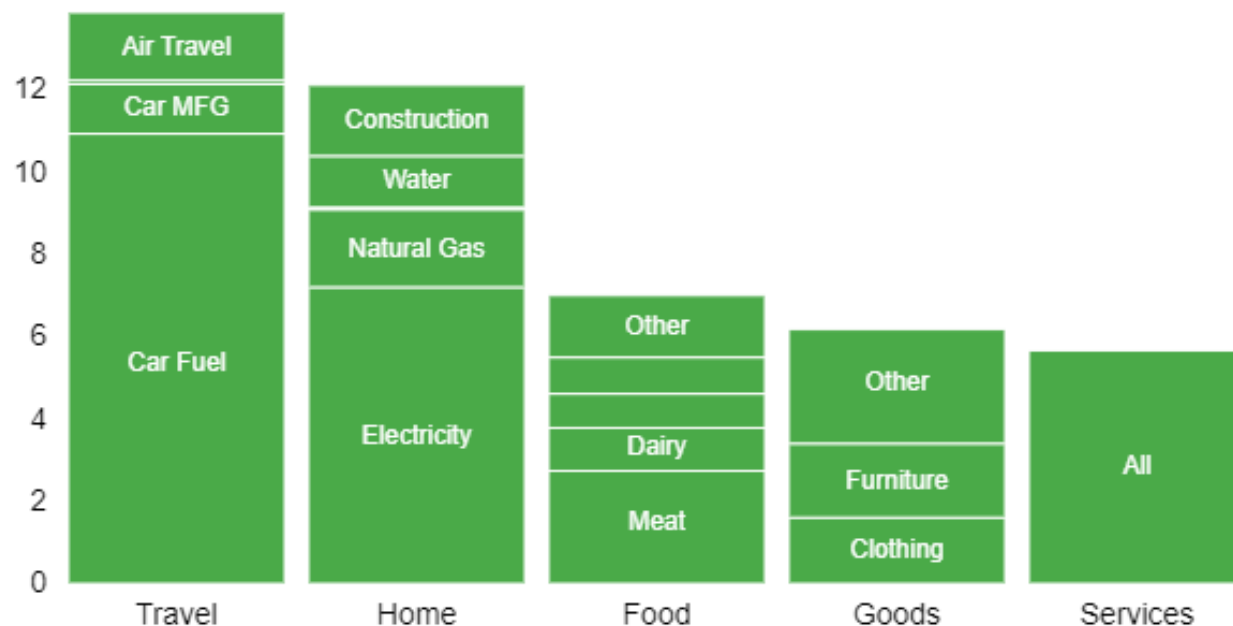


Estimated Consumption-Based Emissions

- Sector-based emissions: 210,400 MTCO₂e
- Consumption-based: 240,660 MTCO₂e



Household tons CO₂eq/year

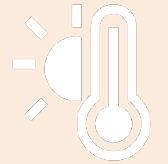
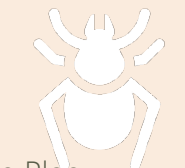
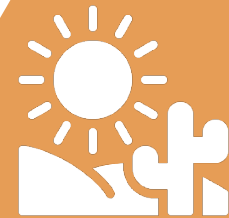
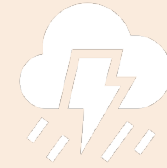
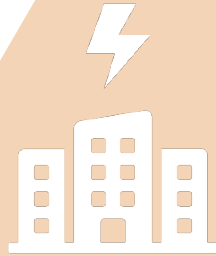





Questions?



So **why** do
we need a
**Climate
Action Plan?**



Climate change poses risks to everything from our health and our infrastructure to local ecosystems

A scenic view of a river flowing through a rocky canyon. The river is surrounded by reddish-brown rock formations and lush green vegetation on the hillsides. In the background, there are mountains under a cloudy sky. A group of people is visible on a rocky path on the right side of the river. A green overlay covers the left side of the image, containing white text.

A Sedona
Climate Action
Plan will establish
a **clear road
map** of priority
actions and
projects

The **benefits** of a plan are **broad**



Enhancing local habitat and recreational opportunities.



Supporting low-income and disadvantaged communities.



Improving quality of life, well-being, and the local economy.



Promoting healthier lifestyles and public health.

Focus Areas



Transportation
& Land Use



Natural
Resources




Public Health,
Safety &
Emergency
Services



Waste &
Consumption



Buildings &
Energy

A scenic view of a river flowing through a rocky canyon. The river is surrounded by reddish-brown rock formations and lush green vegetation on the hillsides. In the background, there are mountains under a cloudy sky. A group of people is visible on a rocky path near the river. A large green triangular overlay is on the left side of the image, containing white text.

Poll: What top three areas do you think the Climate Action Plan should focus on?

MITIGATION

Reducing Sedona's
greenhouse gas emissions.



ADAPTATION

Preparing for
climate change impacts.



Diversity, Equity and Inclusion (DEI)



Diversity, Equity
& Inclusion

- ▲ **Diversity**: The differences among us based on how we experience systemic advantages or encounter systemic barriers in access to opportunities and resources.
- ▲ **Equity**: An approach based in fairness to ensuring everyone has access to the same opportunities and resources.
- ▲ **Inclusion**: Celebrating, centering, and amplifying the perspectives, voices, values, and needs of people who experience barriers, mistreatment, or disadvantages based on their identities in order to ensure they feel a sense of belonging.
- ▲ The CAP prioritizes strategies and actions that are result outcomes that promote **diversity**. All focus areas were evaluated to promote **equity** in the distribution of benefits and to ensure the **inclusion** of disadvantaged populations.

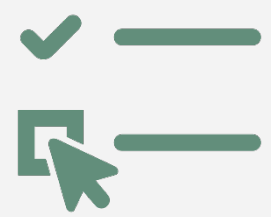


Timeline & Process Overview



SPRING 2020

FALL 2020



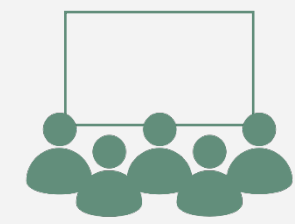
Online surveys



Stakeholder workgroups*



Updates*



Workshops*



Pop-up events & open houses*

*These events will occur throughout the CAP process.



This plan will build on the great work that the City and community have already been doing... and identify additional opportunities



Household hazardous waste and electronics recycling

Sedona and Yavapai County host free household hazardous waste and electronics collection events.



Keep Sedona Beautiful

manages litter lifters, advises on land use policies, led the Dark Sky certification, offers an annual Native Plant workshop and presents awards to leading businesses.



The Verde Valley Sustainability Alliance

collaborates with non-profits to foster sustainability take action on climate change.



Oak Creek Watershed Council

and Friends of the Verde River work to protect the health of our watershed and coordinate watershed cleanups and activities.



The Municipal Sustainability Plan

which outlines clear steps to addressing sustainability and resilience in City operations over the next two years.



Sedona Recycles

which provides recycling drop-off locations and educates the community on waste reduction, reuse, and recycling.



Everyone has a role in our changing climate. You can influence the City's priorities.

Why should I participate?



Shape Sedona's resiliency future for residents, businesses, and visitors



Direct priorities for on-the-ground project and public spending



Represent your community

How will my input be used?



Areas of focus



Targets, vision,
and overarching
goals



Strategies for
achieving goals



How can I
get more
engaged?

- ✓ Visit [Sedonaaz.gov/climate](https://sedonaaz.gov/climate)
- ✓ Complete the online survey
- ✓ Share the **survey** with your friends and family in Sedona



Poll: How did you hear about this event?



Questions?