

- LOBBY / RESTAURANT**
- HOTEL:** 80 guest rooms.
- HOTEL:** 40 guest rooms
Basement/ Business Center
- HOTEL:** 8 guest rooms.
Treehouse Suites
- MULTI-FAMILY:**
28 units
- MULTI-FAMILY**
16 units (Workforce)

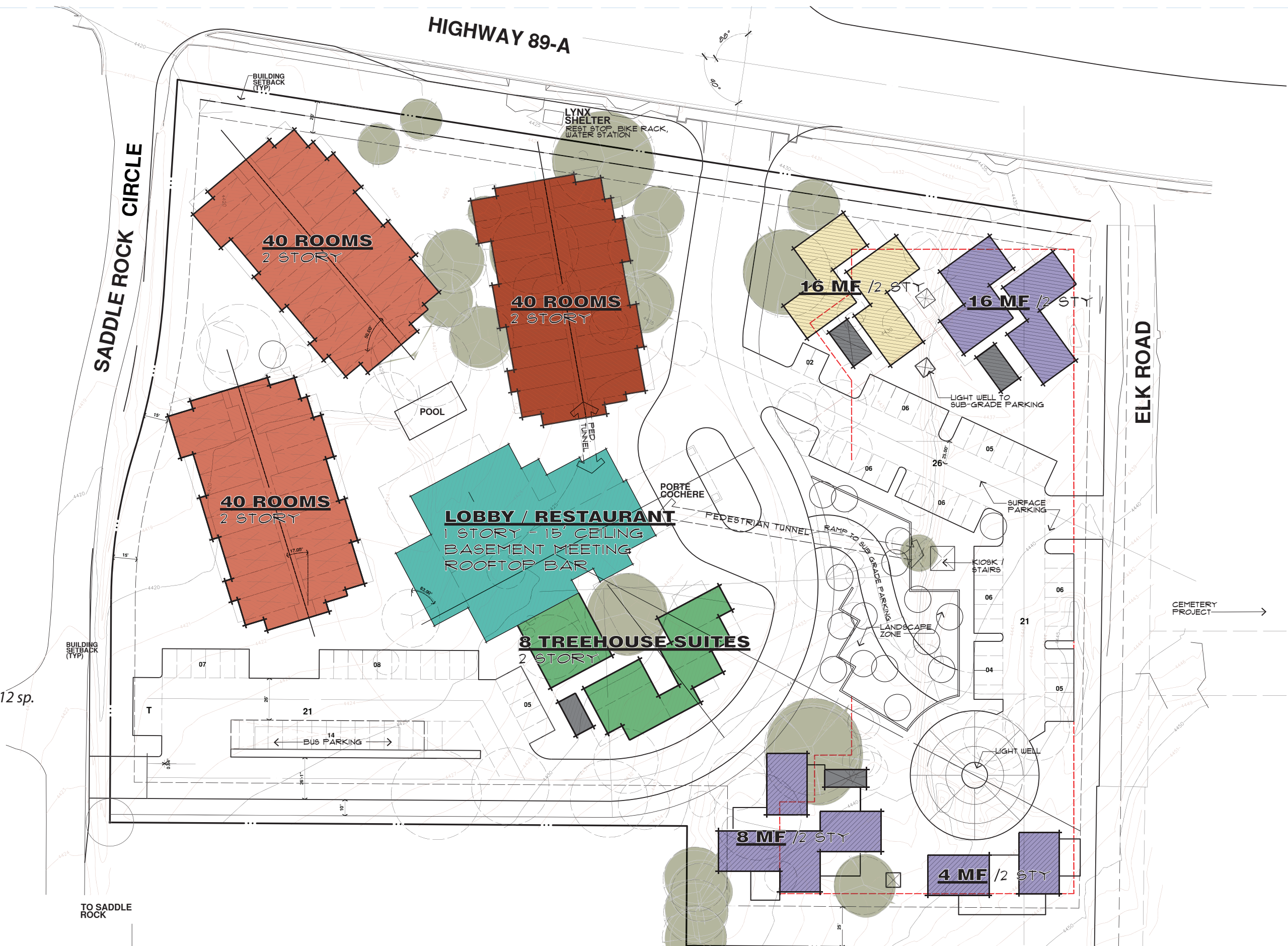
PARKING DATA

Required:

Hotel	148 sp. [128 + 20 sp. (staff)]
Restaurant & Bar	10 sp. (50% public)
Multi-Family	49 sp. (44 + 5)
	207 sp.

Provided:

	108 sp. (sub grade)
	21 sp. + 2 bus (south lot) or +12 sp.
	49 sp. (east lot)
	*180 sp.
	*approx. 10% reduction.



SITEPLAN

the Village at Saddlerock Crossing
 Soldiers Pass Road & Highway 89A
 Sedona Arizona

08/12/2020
 Stephen Thompson Architect. Sedona/Del Mar
 Studio@StephenThompsonArchitect.com
 C: 928.301.5922

HIGHWAY 89-A

LANDSCAPE ACCENTUATION AT ENTRY AREA

U.S. HWY 89 A STREETSCAPE 550 I.F.

CONCEPTUAL LANDSCAPE LEGEND - PLANT LIST

THE PLANTS TO BE PROPOSED ON THE FUTURE "FINAL LANDSCAPE PLAN" WILL COME FROM THE LIST OF CHOICES, SHOWN IN GROUPS, BELOW. SOME OF THE CHOICES LISTED MAY NOT BE USED. NATIVE VARIETIES ARE INDICATED BY UNDERLINE. REQUESTS WILL BE MADE TO THE "COMMUNITY DEVEL DEPT" TO ALLOW THE USE OF PLANTS ON THIS LIST THAT ARE NOT INCLUDED IN THE "APPROVED PLANT LIST".

symbol botanical name common name size

EXISTING TREES

LARGE DECIDUOUS SHADE TREES

FRAXINUS VELUTINA	ARIZONA ASH	15 gal &
GLEDITSIA TRIACANTHOS	HONEY LOCUST	24" box
PISTACIA CHINENSIS	PISTACHE	
PLATANUS WRIGHTII	ARIZONA SYCAMORE	
POPULUS FREMONTII	FREMONT COTTONWOOD	

CONIFEROUS EVERGREEN TREES

CUPRESSUS ARIZONICA	ARIZONA CYPRESS
PINUS EDULIS	PINON PINE
PINUS NIGRA	BLACK PINE

ACCENT and FLOWERING TREES

CHILOPSIS LINEARIS	DESERT WILLOW
LAGERSTROEMIA INDICA	CRAPE MYRTLE
MALUS HOPA	FLOWERING CRABAPPLE
PHOTINIA FRASERI	PHOTINIA
PRUNUS THUNBERGIANA	PURPLE LEAF PLUM
PYRUS CALLERYANA	FLOWERING PEAR
SOPHORA SECUNDFLORA	TEXAS MOUNTAIN LAUREL

LANDSCAPE AREAS

MAJOR LANDSCAPE AREAS COMPRISED OF SMALL - LARGE SHRUBS DESIGNED FOR EACH SPECIFIC LOCATION AND WILL BE SHOWN IN DETAIL ON THE FINAL "LANDSCAPE PLAN"

LARGE BROADLEAF EVERGREEN SHRUBS

ARCTOSTAPHYLOS PUNGENS	NATIVE MANZANITA
COTONEASTER LACTEUS	CLUSTERBERRY
ELAEAGNUS PUNGENS	SILVERBERRY
LEUCOPHYLUM FRUTESCENS	TEXAS RANGER
PHOTINIA FRASERI	PHOTINIA
RHUS OVATA	SUGAR SUMAC
SOPHORA SECUNDFLORA	TEXAS MOUNTAIN LAUREL

SMALL - MEDIUM BROADLEAF EVERGREEN SHRUBS

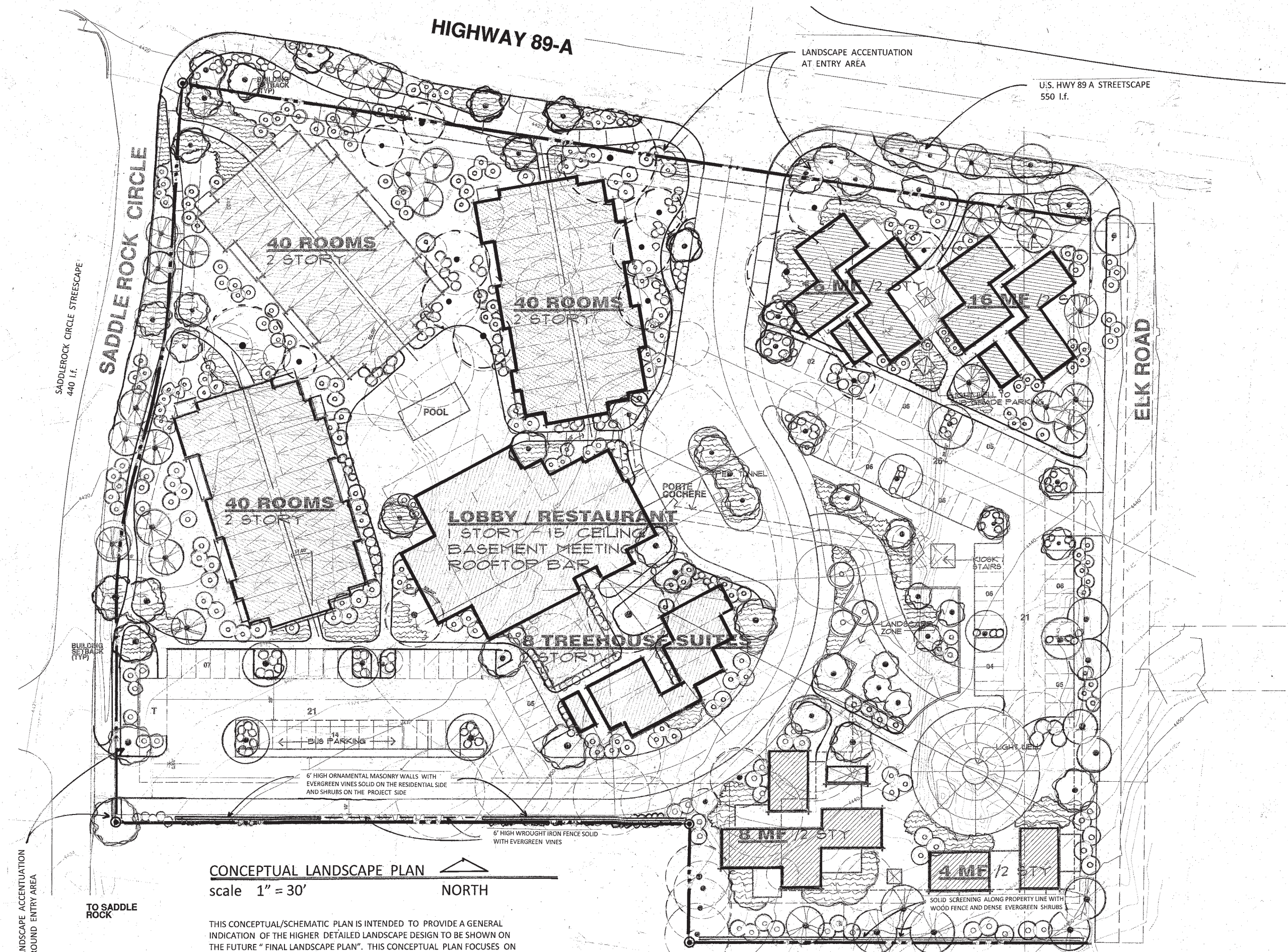
BERBERIS THUNBERGIANA	PYGMY BARBERRY
CEANOETHUS GREGGI	DESERT LILAC
CERATOIDES LANATA	WINTERFAT
GARRYA WRIGHTII	SILK TASSLE
MAHONIA AQUIFOLIUM	OREGON GRAPE HOLLY
NANDINA DOMESTICA	NANDINA
RHAPHIOLEPSIS INDICA	INDIAN HAWTHORN
ROSMARINUS OFFICIANALIS	ROSEMARY
SALVI GREGGI	SALVIA

ACCENT NOT SHOWN ON THIS PLAN

AGAVE SPECIES	AGAVE
CAESALPINIA	YELLOW BIRD OF PARADISE
LAVANDULA STOACHAS	SPANISH LAVANDER
NOLINA	BEARGRASS
YUCCA SPECIES	YUCCA

UNDERSTORY - GROUND COVER NOT SHOWN ON THIS PLAN

MAHONIA REPENS	CREeping MAHONIA
TEUCRIUM	DWARF GERMANDER
ROSMARINUS OFFICIANALIS	PROSTRATE ROSEMARY



CONCEPTUAL LANDSCAPE PLAN
scale 1" = 30'
NORTH

THIS CONCEPTUAL/SCHEMATIC PLAN IS INTENDED TO PROVIDE A GENERAL INDICATION OF THE HIGHER DETAILED LANDSCAPE DESIGN TO BE SHOWN ON THE FUTURE "FINAL LANDSCAPE PLAN". THIS CONCEPTUAL PLAN FOCUSES ON INDICATING THE MAJOR AREAS TO BE TREATED AND WHAT GENERAL TREATMENT IS PROPOSED. THIS CONCEPTUAL DESIGN ADDRESSES THE BASIC "FUNCTIONAL DESIGN REQUIREMENTS" OF * BUFFERING/SCREENING, * STREETScape BEAUTIFICATION, * PARKING AREA VISUAL ENHANCEMENT, * FOUNDATION PLANTINGS AROUND BUILDINGS AND OVERALL BEAUTIFICATION

STEPHEN THOMPSON ARCHITECT SEDONA, DEL MAR, CHICAGO, SANTA FE, C. 928.301.5922 www.StephenThompsonArchitect.com
RICHARD HUBBELL & ASSOCIATES LANDSCAPE ARCHITECTS

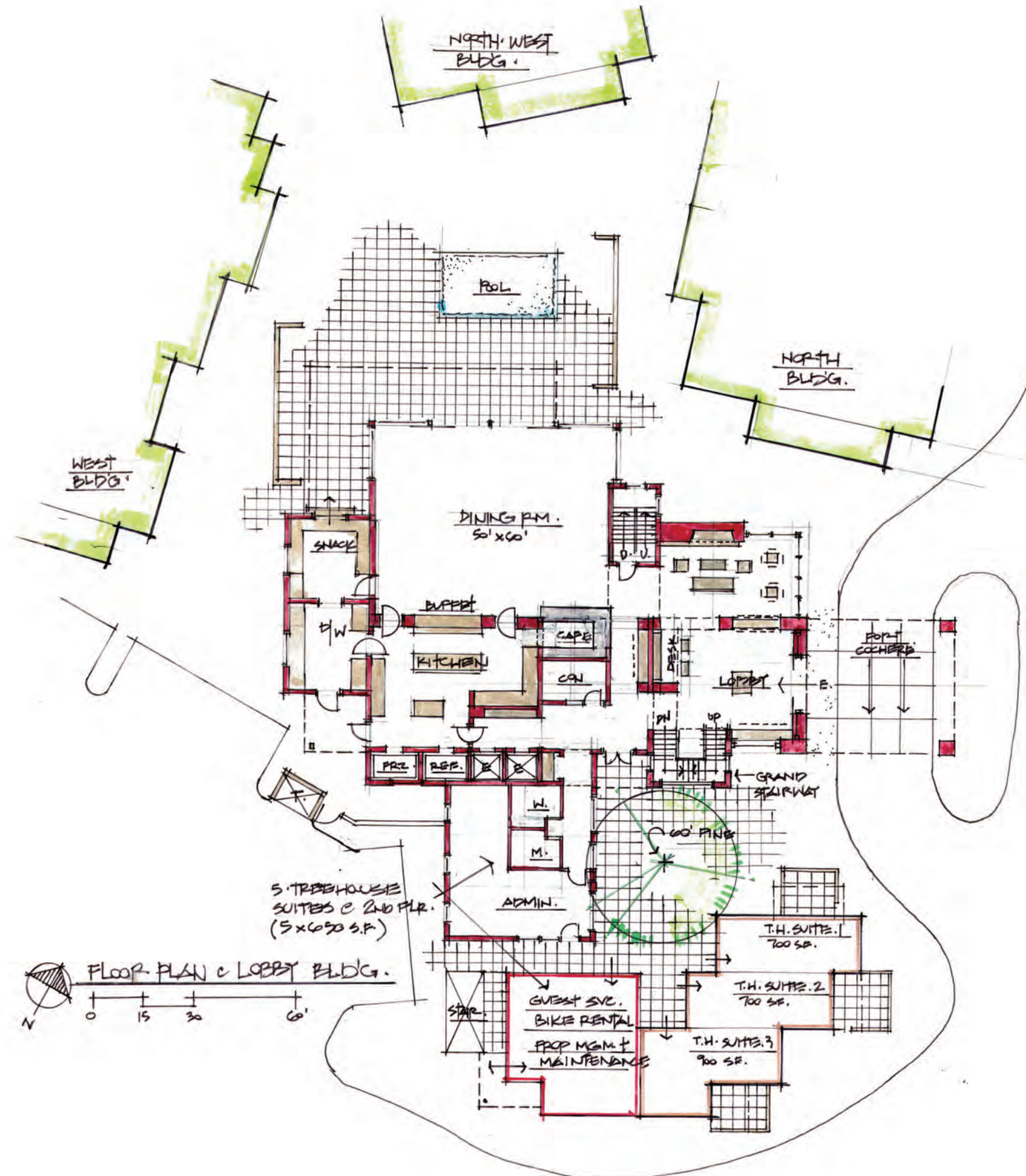
the Village at Saddlerock Crossing
Soldiers Pass Road & Highway 89A
Sedona Arizona

prepared for:
OXFORD HOTEL GROUP
ATT: CURT BANEY, PRESIDENT
475 N.E. BELLVUE DR., STE 201
BEND, OREGON 97701
541-382-2188

prepared by:
RICHARD HUBBELL, landscape architect
P.O. BOX 1151
SEDONA, ARIZONA 86339
928-282-9477 928-300-6522



Richard Steven Hubbell
EXPIRES 3/25/21



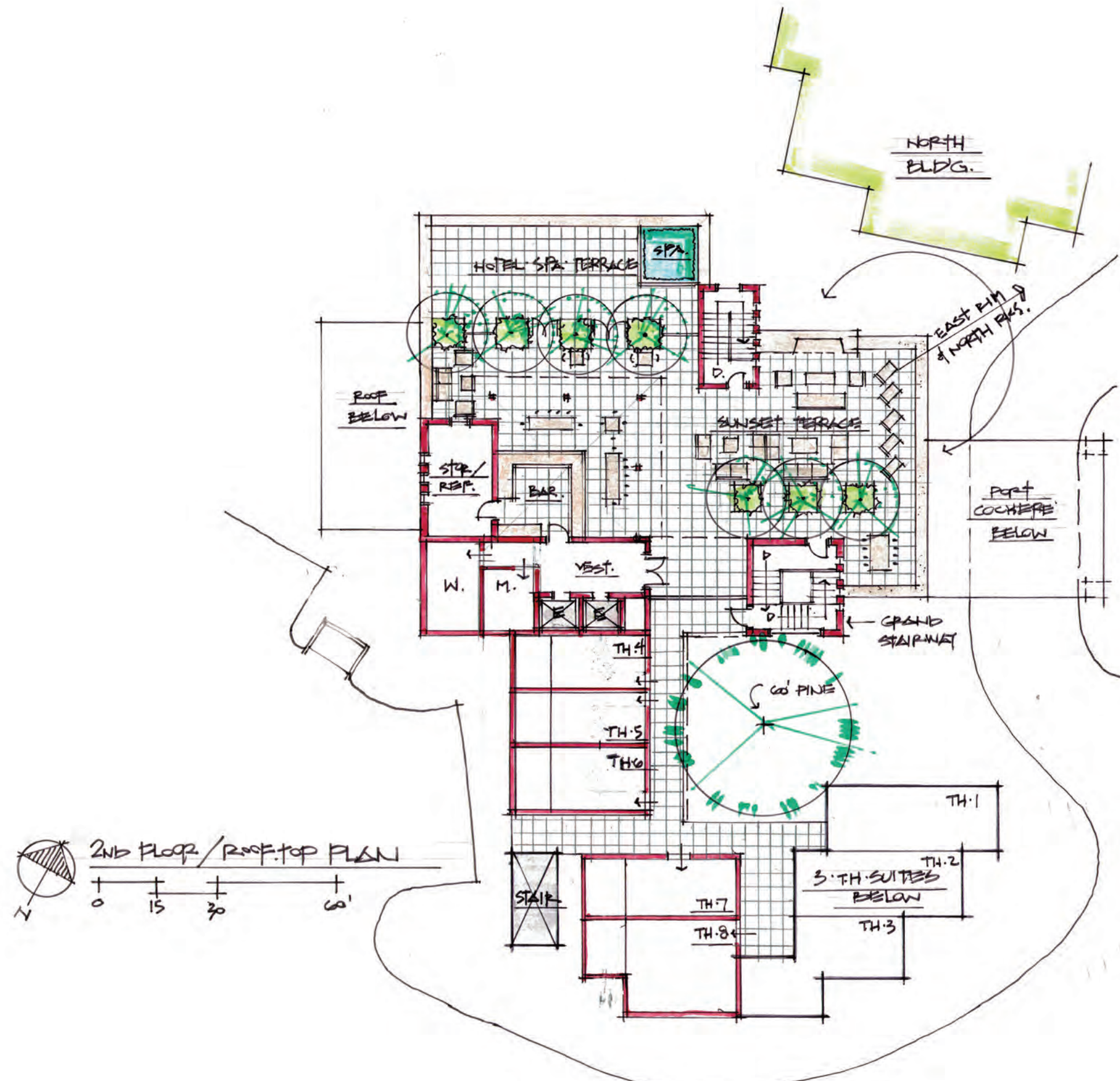
FLOOR PLAN C LOBBY BLDG.

S. TREEHOUSE SUITES C 2ND FLR. (5 x 650 S.F.)

the Village at Saddlerock Crossing
 Soldiers Pass Road & Highway 89A
 Sedona Arizona

08/12/2020

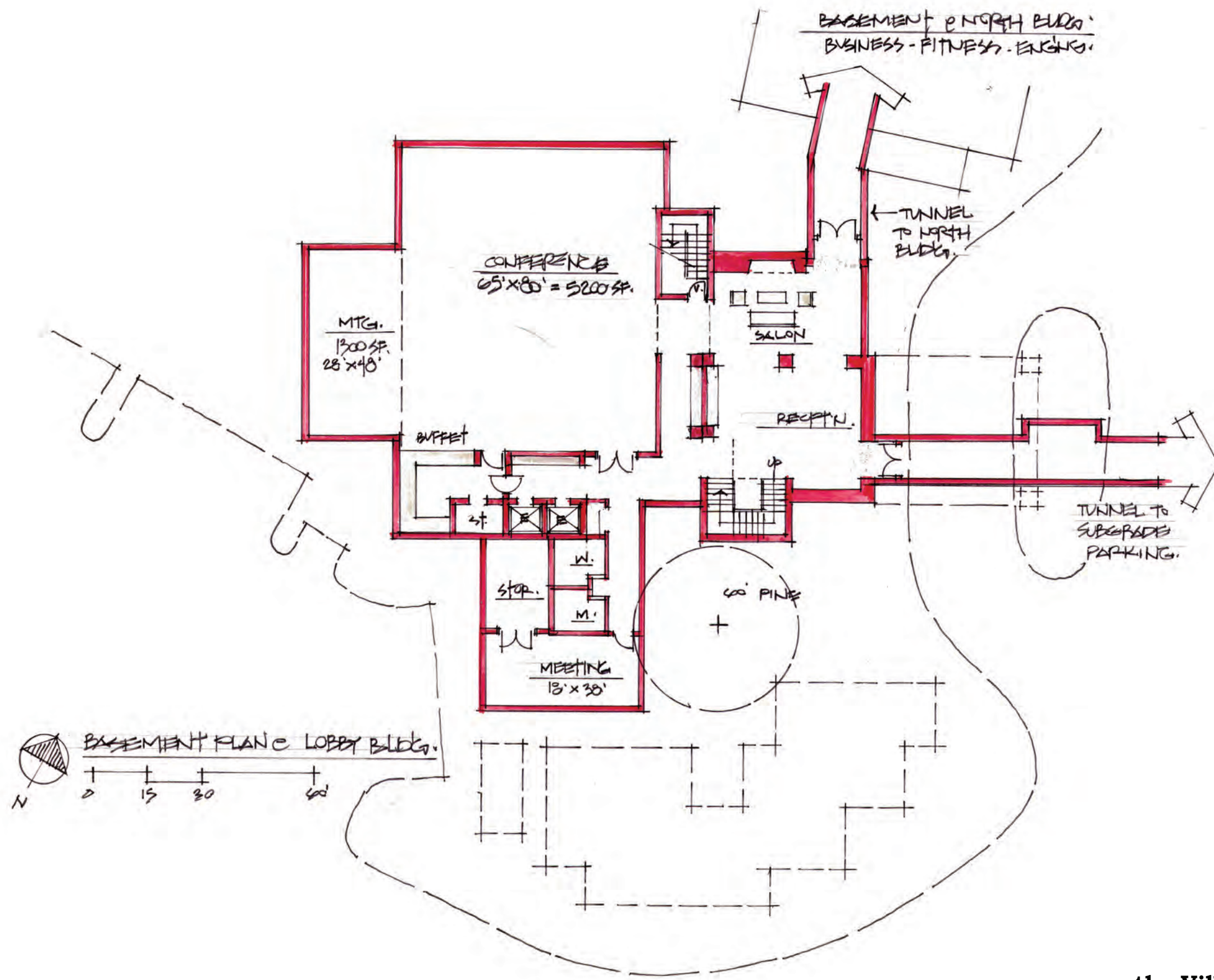
Stephen Thompson Architect. Sedona/Del Mar
 Studio@StephenThompsonArchitect.com
 C: 928.301.5922



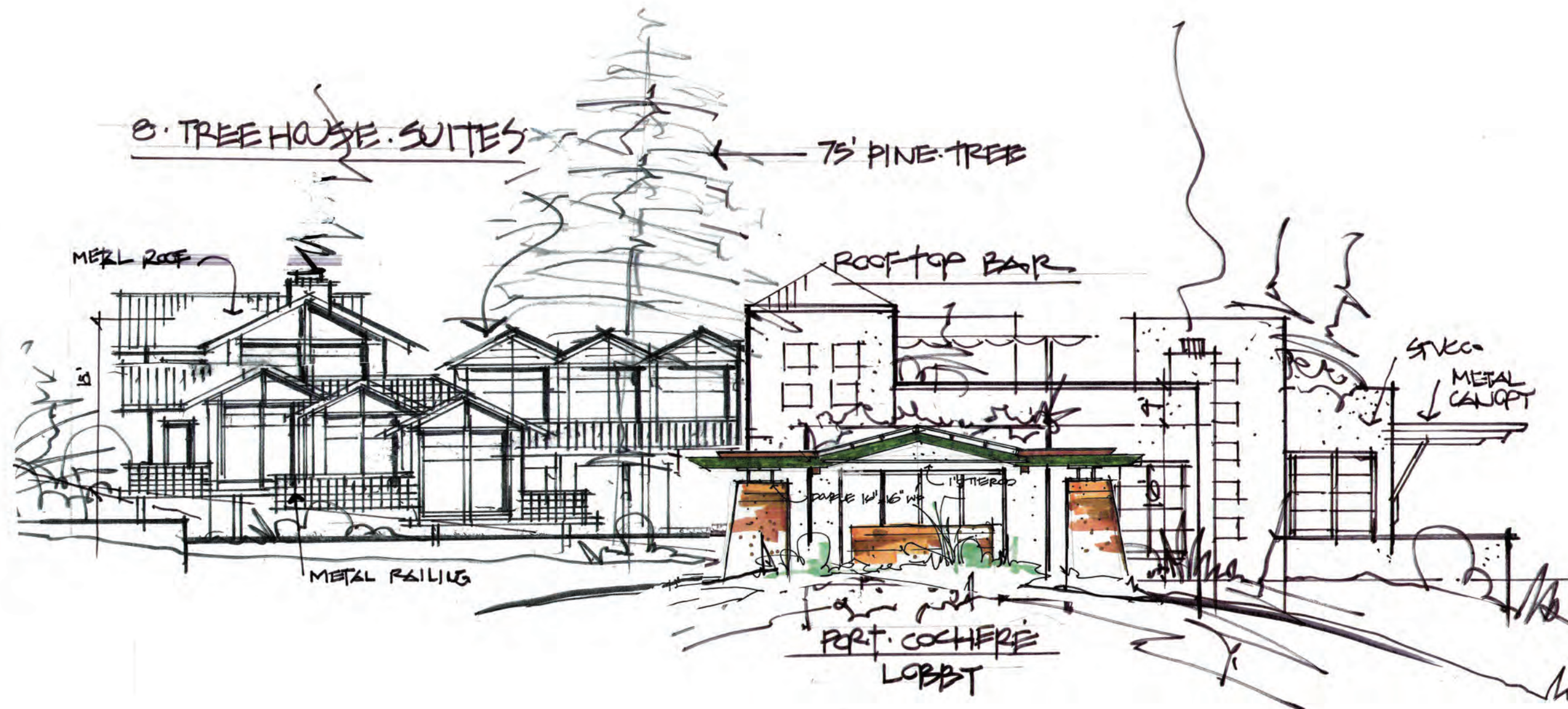
the Village at Saddlerock Crossing
 Soldiers Pass Road & Highway 89A
 Sedona Arizona

08/12/2020

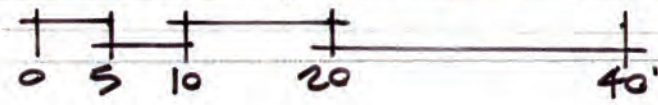
Stephen Thompson Architect. Sedona/Del Mar
 Studio@StephenThompsonArchitect.com
 C: 928.301.5922



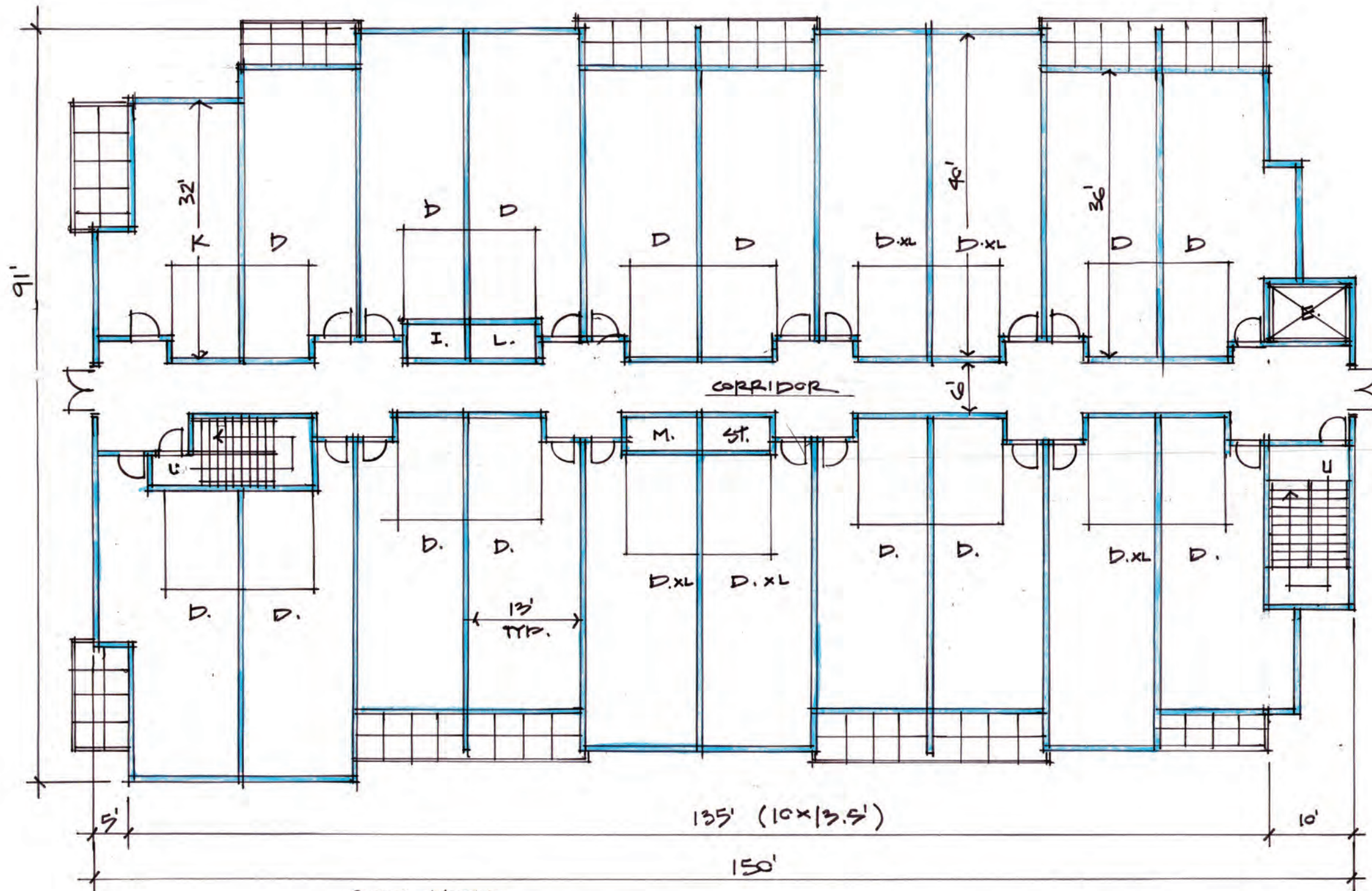
the Village at Saddlerock Crossing
 Soldiers Pass Road & Highway 89A
 Sedona Arizona
 08/12/2020
 Stephen Thompson Architect. Sedona/Del Mar
 Studio@StephenThompsonArchitect.com
 C: 928.301.5922



ELEVATION & LOBBY BUILDING



the Village at Saddlerock Crossing
Soldiers Pass Road & Highway 89A
Sedona Arizona
08/12/2020
Stephen Thompson Architect. Sedona/Del Mar
Studio@StephenThompsonArchitect.com
C: 928.301.5922



ROOM SIZES.

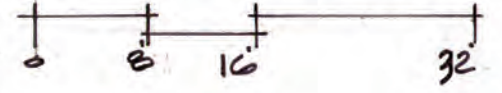
D: DOUBLE ROOM - 13' x 36' — 20

D.XL: DOUBLE ROOM - 13' x 40' — 5

K: KING ROOM - 13' x 32' — 5

40 ROOMS

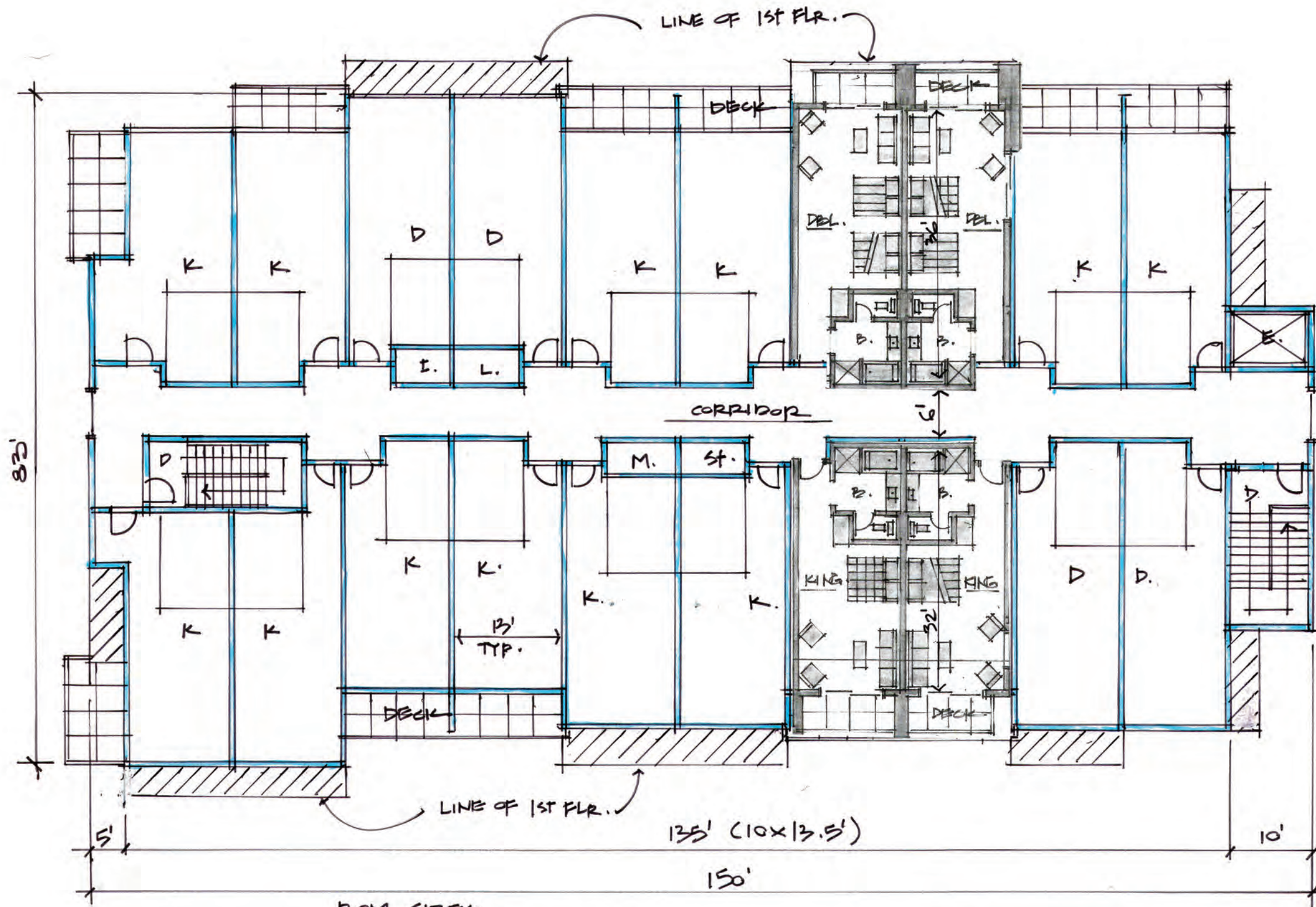
1st FLOOR PLAN of ROOM BLOCK
(TYPICAL of 3 BUILDINGS) 13,650 S.F.



the Village at Saddlerock Crossing
 Soldiers Pass Road & Highway 89A
 Sedona Arizona

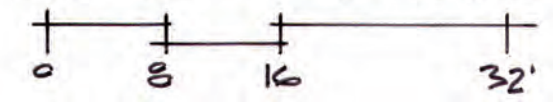
08/12/2020

Stephen Thompson Architect. Sedona/Del Mar
 Studio@StephenThompsonArchitect.com
 C: 928.301.5922

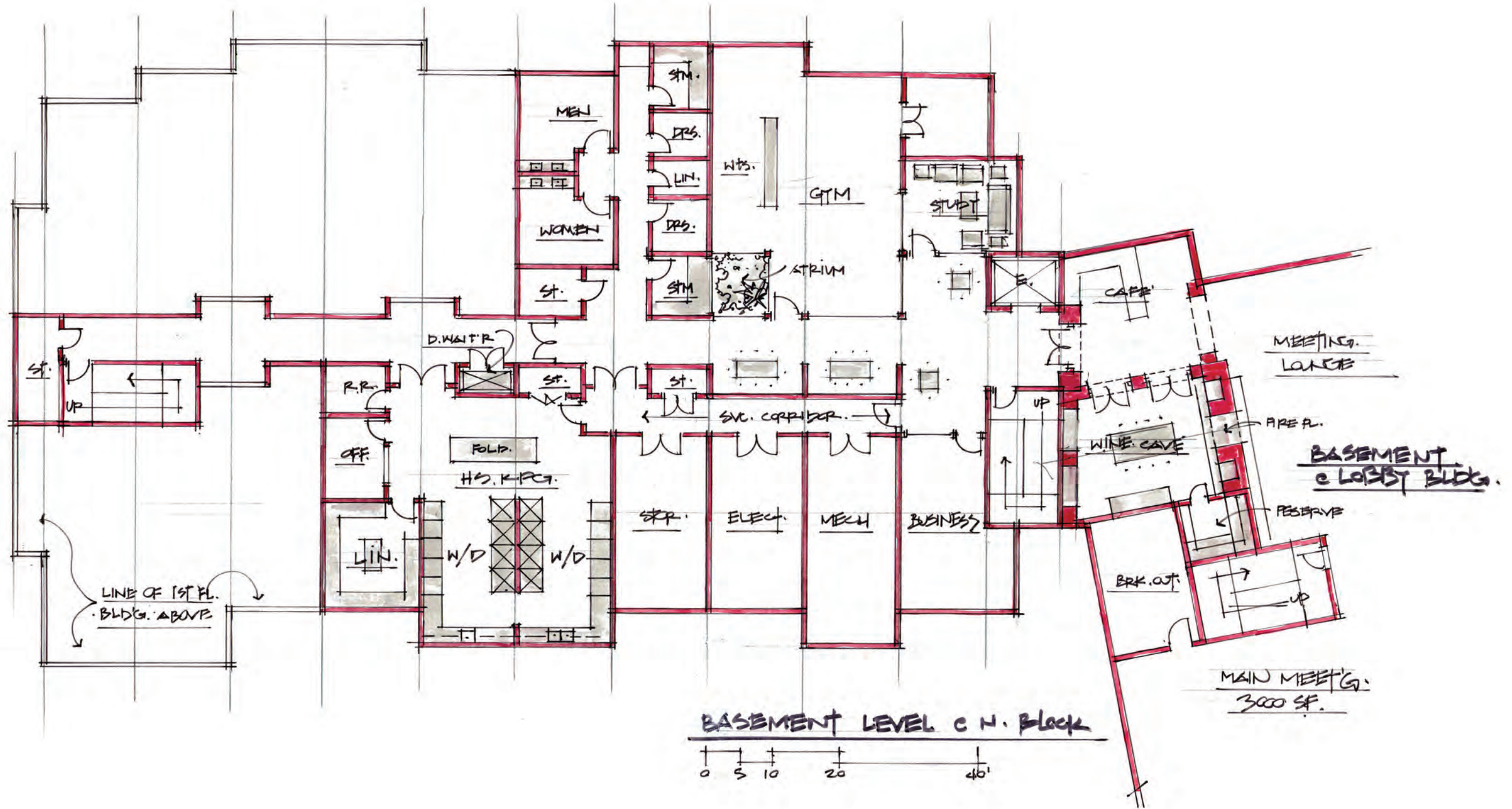


ROOM SIZES
 D: DOUBLE ROOM - 13' x 36'
 D XL: DOUBLE ROOM - 13' x 40'
 K: KING ROOM - 13' x 32'

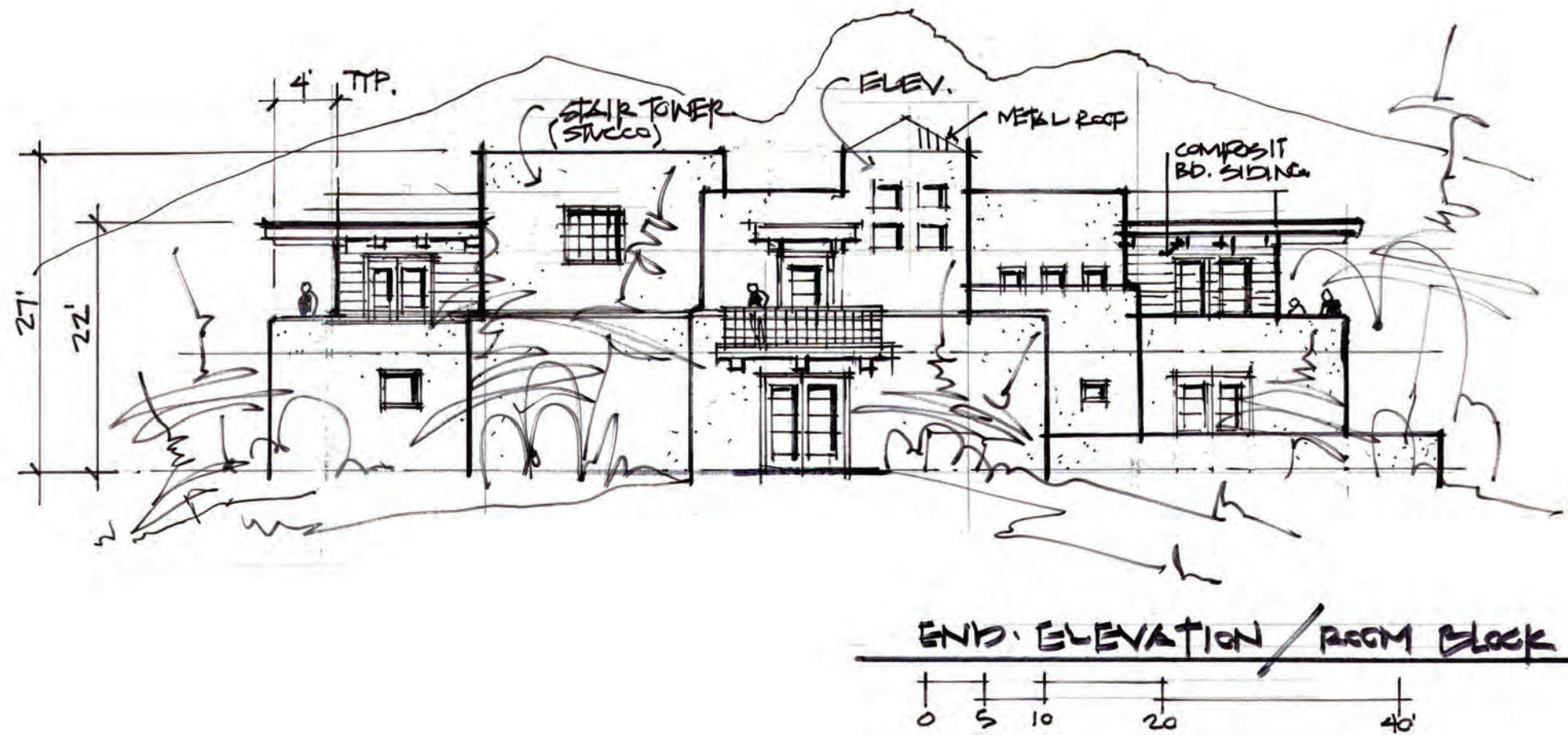
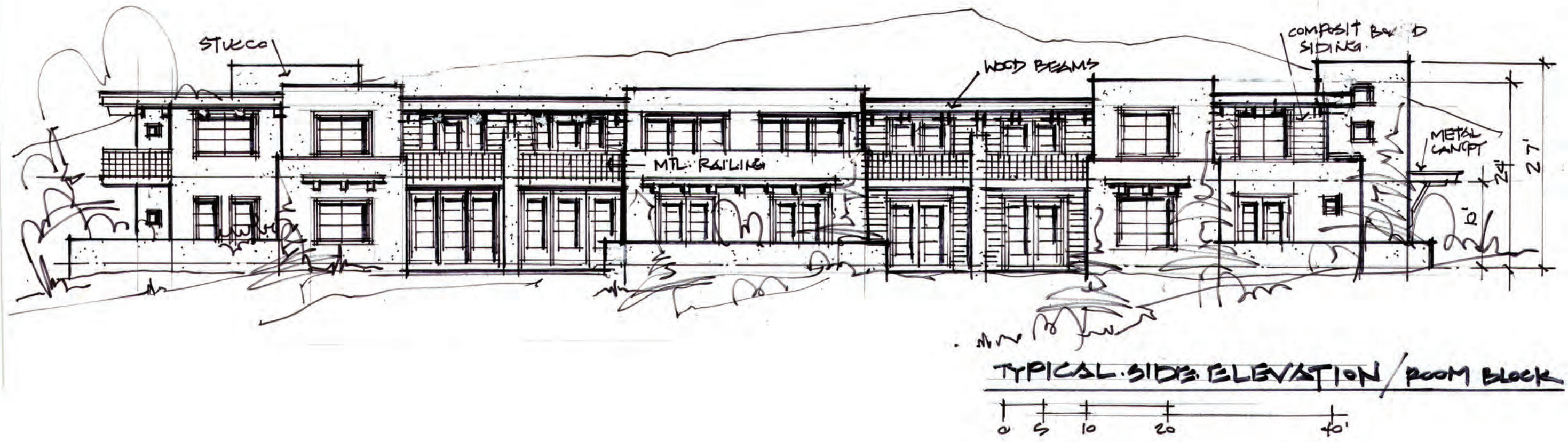
2ND FLOOR PLAN & ROOM BLOCK
 (TYPICAL & 3 BUILDINGS) 12,450 SF.



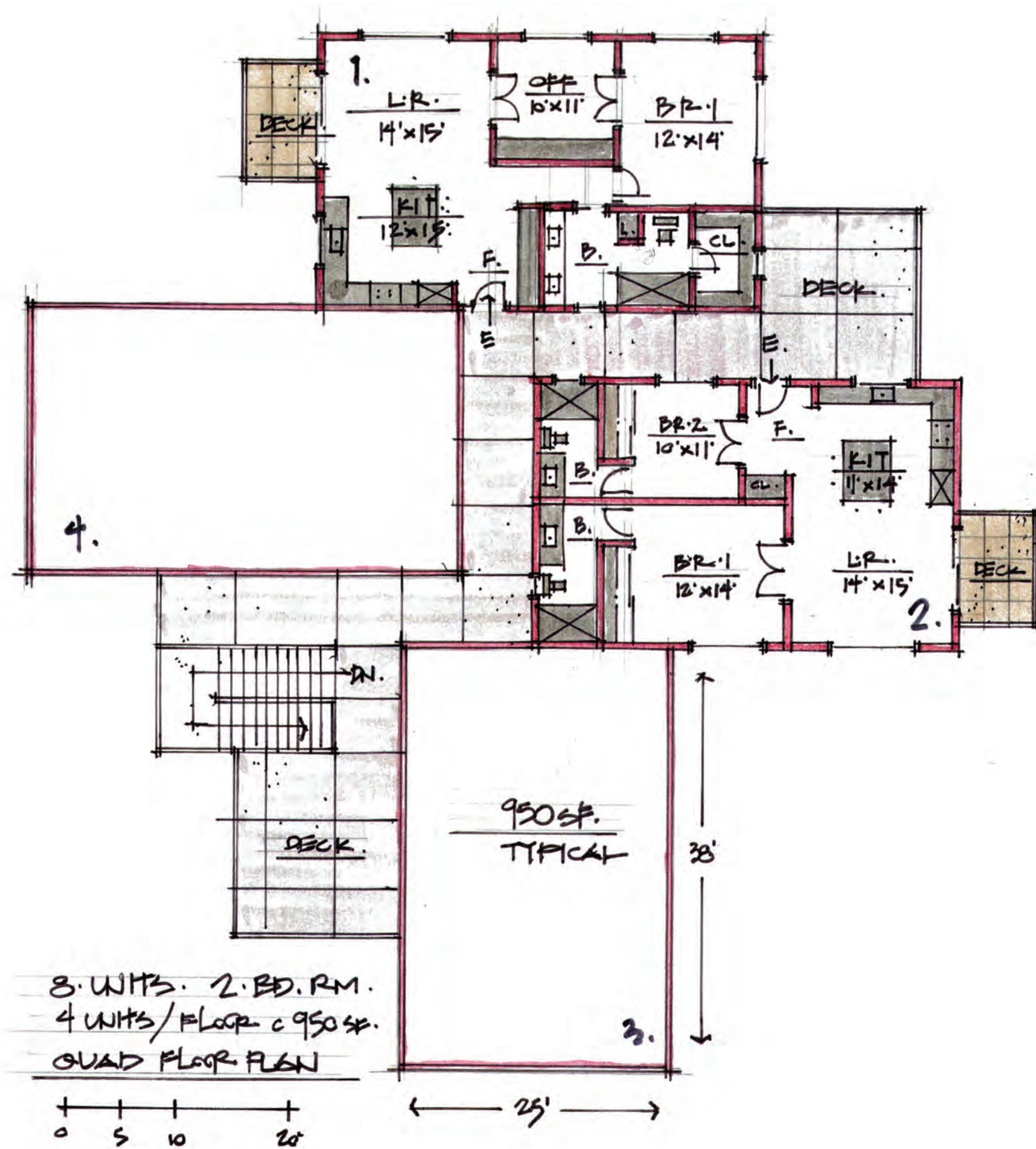
the Village at Saddlerock Crossing
 Soldiers Pass Road & Highway 89A
 Sedona Arizona
 08/12/2020
 Stephen Thompson Architect. Sedona/Del Mar
 Studio@StephenThompsonArchitect.com
 C: 928.301.5922



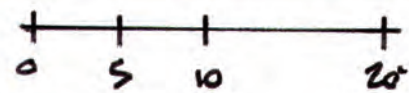
the Village at Saddlerock Crossing
 Soldiers Pass Road & Highway 89A
 Sedona Arizona
 08/12/2020
 Stephen Thompson Architect. Sedona/Del Mar
 Studio@StephenThompsonArchitect.com
 C: 928.301.5922



the Village at Saddlerock Crossing
 Soldiers Pass Road & Highway 89A
 Sedona Arizona
 08/12/2020
 Stephen Thompson Architect. Sedona/Del Mar
 Studio@StephenThompsonArchitect.com
 C: 928.301.5922



8. UNITS. 2. BD. RM.
 4 UNITS/FLOOR c 950 SF.
 QUAD FLOOR PLAN



MULTI-FAMILY AREA CALCULATIONS:

Work Force Studios..... 475 s.f.
 Two Bedroom Units..... 950 s.f.
 Luxury One Bedroom Units..... 1050 s.f.

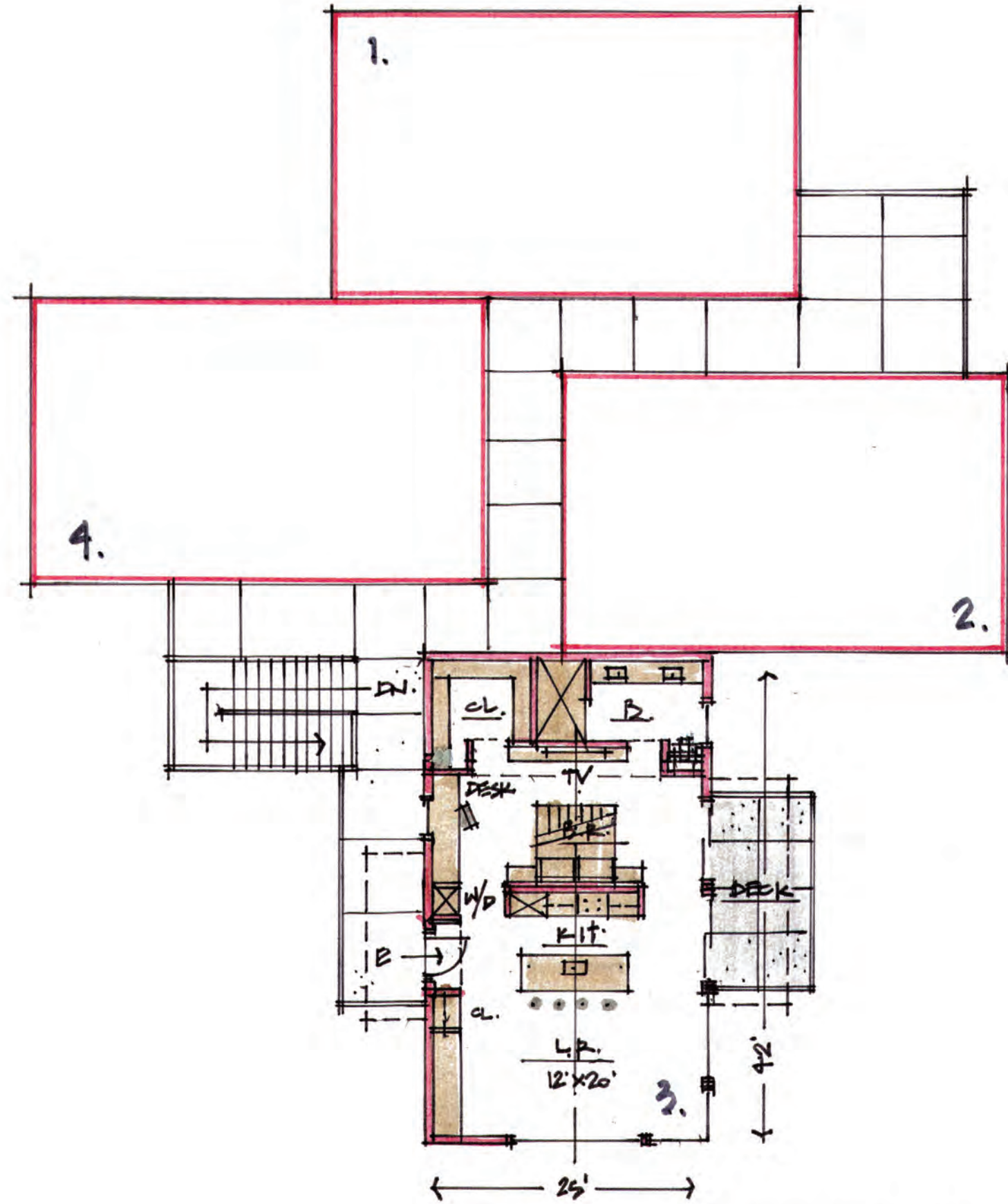
the Village at Saddlerock Crossing

Soldiers Pass Road & Highway 89A
 Sedona Arizona

08/12/2020

Stephen Thompson Architect. Sedona/Del Mar
 Studio@StephenThompsonArchitect.com

C: 928.301.5922



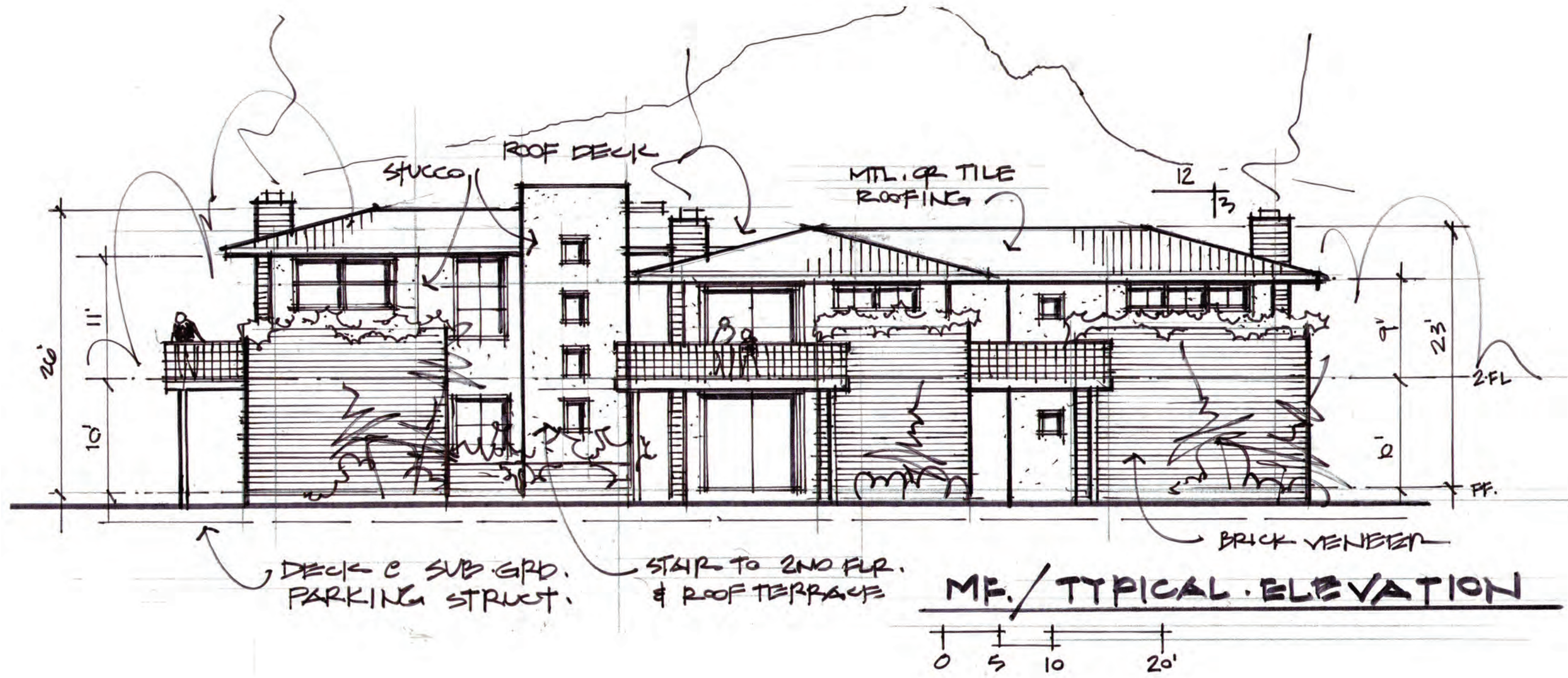
FLOOR PLAN @ UPSCALE I. BD. RM.
1050 S.F.

the Village at Saddlerock Crossing
Soldiers Pass Road & Highway 89A
Sedona Arizona

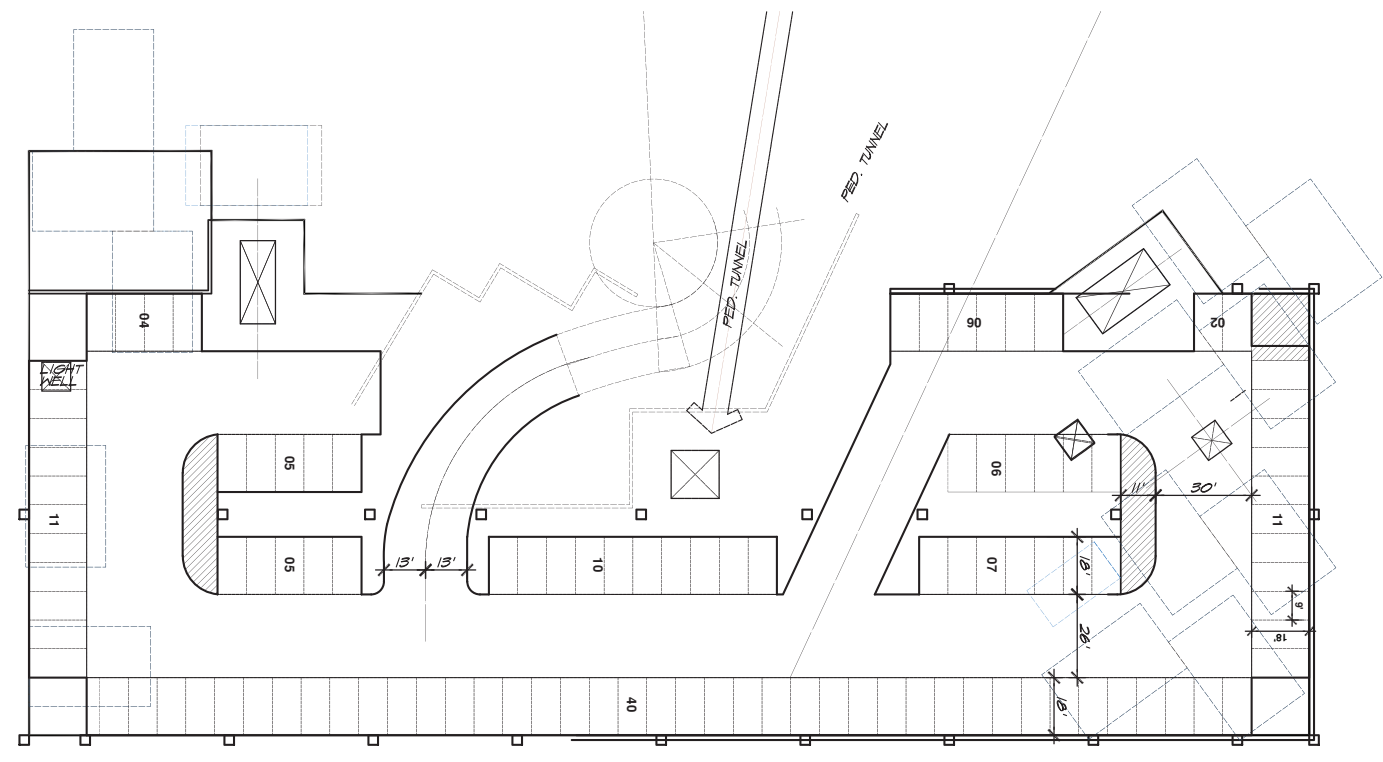
08/12/2020

Stephen Thompson Architect. Sedona/Del Mar
Studio@StephenThompsonArchitect.com

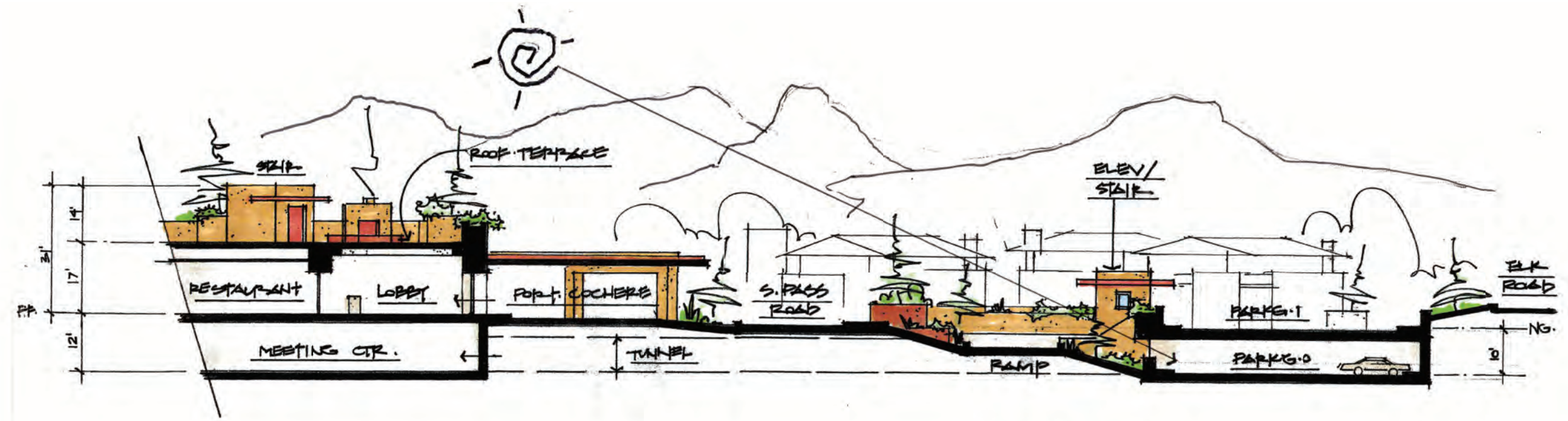
C: 928.301.5922




the Village at Saddlerock Crossing
 Soldiers Pass Road & Highway 89A
 Sedona Arizona
 08/12/2020
 Stephen Thompson Architect. Sedona/Del Mar
 Studio@StephenThompsonArchitect.com
 C: 928.301.5922




SUBGRADE PARKING PLAN
EAST PARCEL

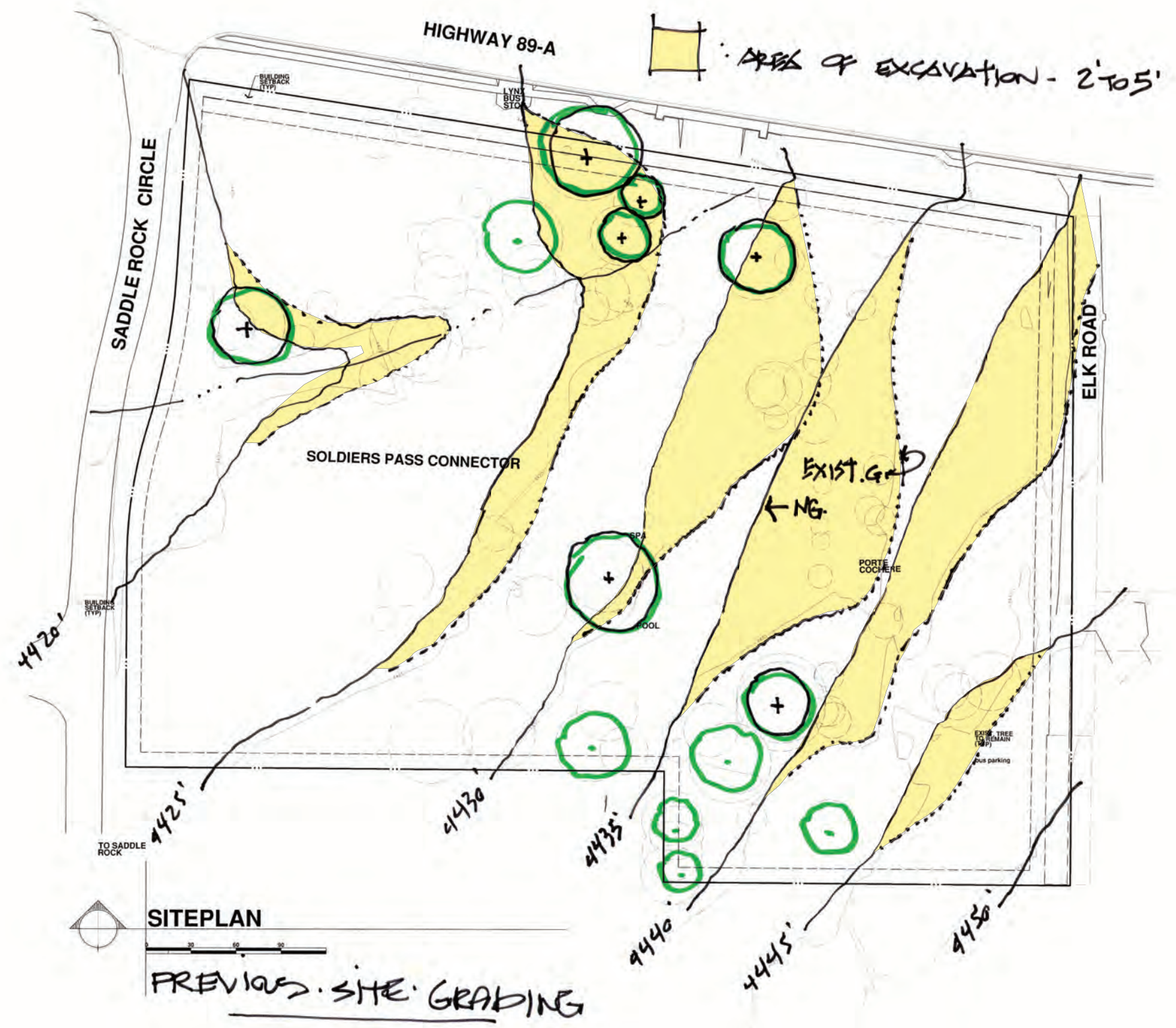



SITE SECTION A
 0 15 30 60'

the Village at Saddlerock Crossing
 Soldiers Pass Road & Highway 89A
 Sedona Arizona

08/12/2020

Stephen Thompson Architect. Sedona/Del Mar
Studio@StephenThompsonArchitect.com
 C: 928.301.5922



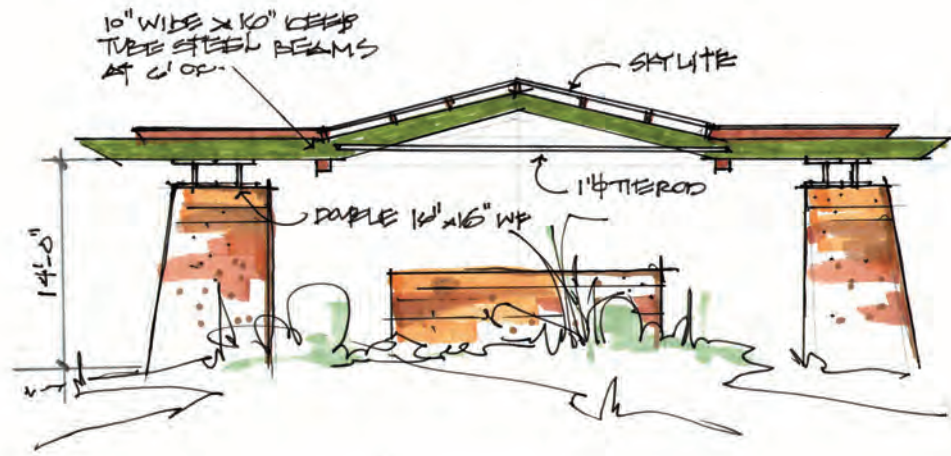
the Village at Saddlerock Crossing
 Soldiers Pass Road & Highway 89A
 Sedona Arizona

08/12/2020

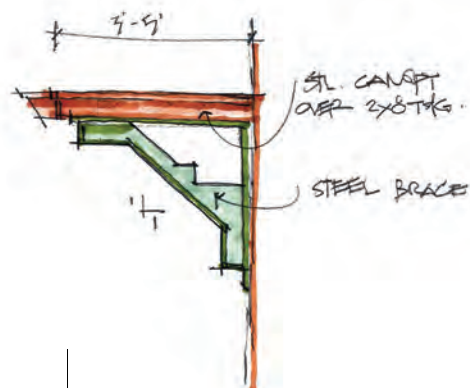
Stephen Thompson Architect. Sedona/Del Mar
Studio@StephenThompsonArchitect.com

C: 928.301.5922

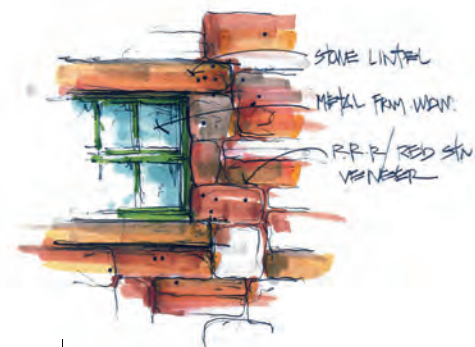
Preliminary Materials, Colors & Details



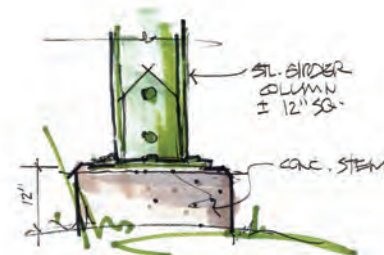
Port Cochere Elevation



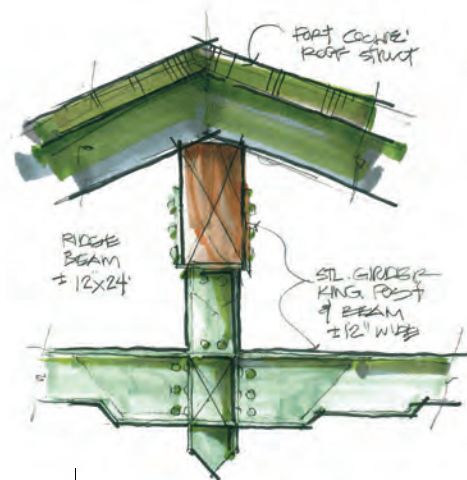
Canopy Brace



Window Detail



Column Base



King Post

Exterior Finish Notes:

- Paint: **Benjamin Moore Paint**
- Stucco: **Synthetic Integral Color, Sand Float Finish**
- Stone Veneer: **Authentic Sedona Native Mix of River Rock & Red Cliff Stone**
- Wood Siding: **10" Composite Horizontal Shiplap w/ Steel Tube Corner and Edge Trim**
- Fascia: **Bronze Aluminum**
- Overhang & Canopy: **2x8 Spruce T&G Decking w/ Steel Tube Edge Trim & Braces**
- Window / Door Frame: **Bronze Aluminum**
- Flat Roof: **Seamless w/ Mineral Cap. Color TBD**
- Pitch Roof: **Powder Coat Seamed Metal w/ Matching Fascia Trim**
- Handrails / Guardrails: **Horizontal Steel Tube**
- Concrete Paving: **Integral Color Exposed Sand Finish w/ Patterned Scoring**
- Regulatory and Directional Signage: **Mounted on Tube Steel Posts to Match Railing Color**
- Lobby Port Cochere Structure: **Heavy Steel Girder w/ Riveted Connections & Cast Concrete Base. Steel Rafters w/ 2x8 Spruce T&G Decking**
- Exterior Lighting: **Fabricated Steel Fixtures**

the Village at Saddlerock Crossing
Soldiers Pass Road & Highway 89A
Sedona Arizona

08/12/2020

Stephen Thompson Architect. Sedona/Del Mar
Studio@StephenThompsonArchitect.com
 C: 928.301.5922