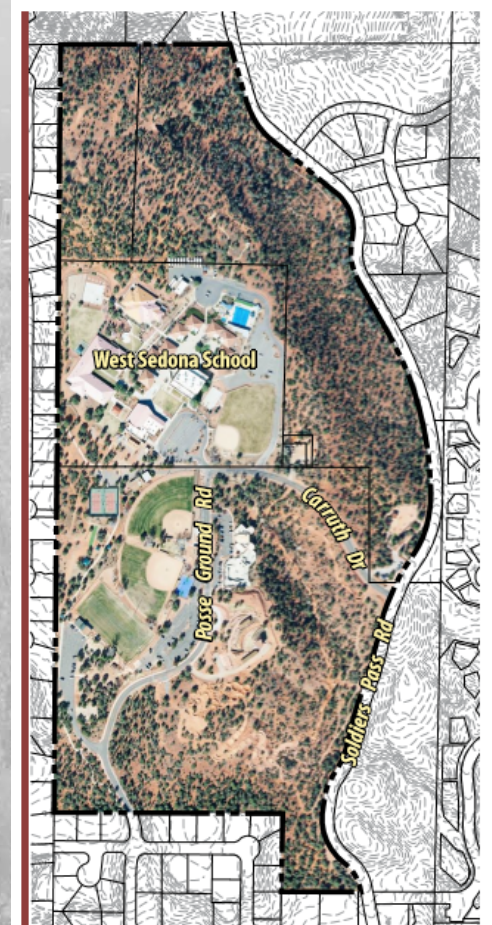


# POSSE GROUNDS PARK EVALUATION

In Spring of 2020, Environmental Planning Group worked with the Parks and Recreation Department to conduct a comprehensive evaluation of Posse Grounds Park that provided recommendations for possible design changes to accommodate the needs of the community regarding the park land. The evaluation gave an analysis of the current, as well as future needs for the park to function as a sports venue, event venue, passive recreation location, performing arts venue and yet to be determined needs/ideas that could benefit most park users and to identify constraints, limitations, and possibilities for mingling existing park amenities with new additions. This evaluation consisted of a stakeholder survey, stakeholder meeting/discussion, and a two day design event including a design charrette and public forum to listen to community input/feedback. From this evaluation, three Options were formed based on the input and recommendations from the community.



*Posse Grounds Park*



**Proposed facilities:**

- 8-plex pickleball
- Combined turf fields
- Children's garden

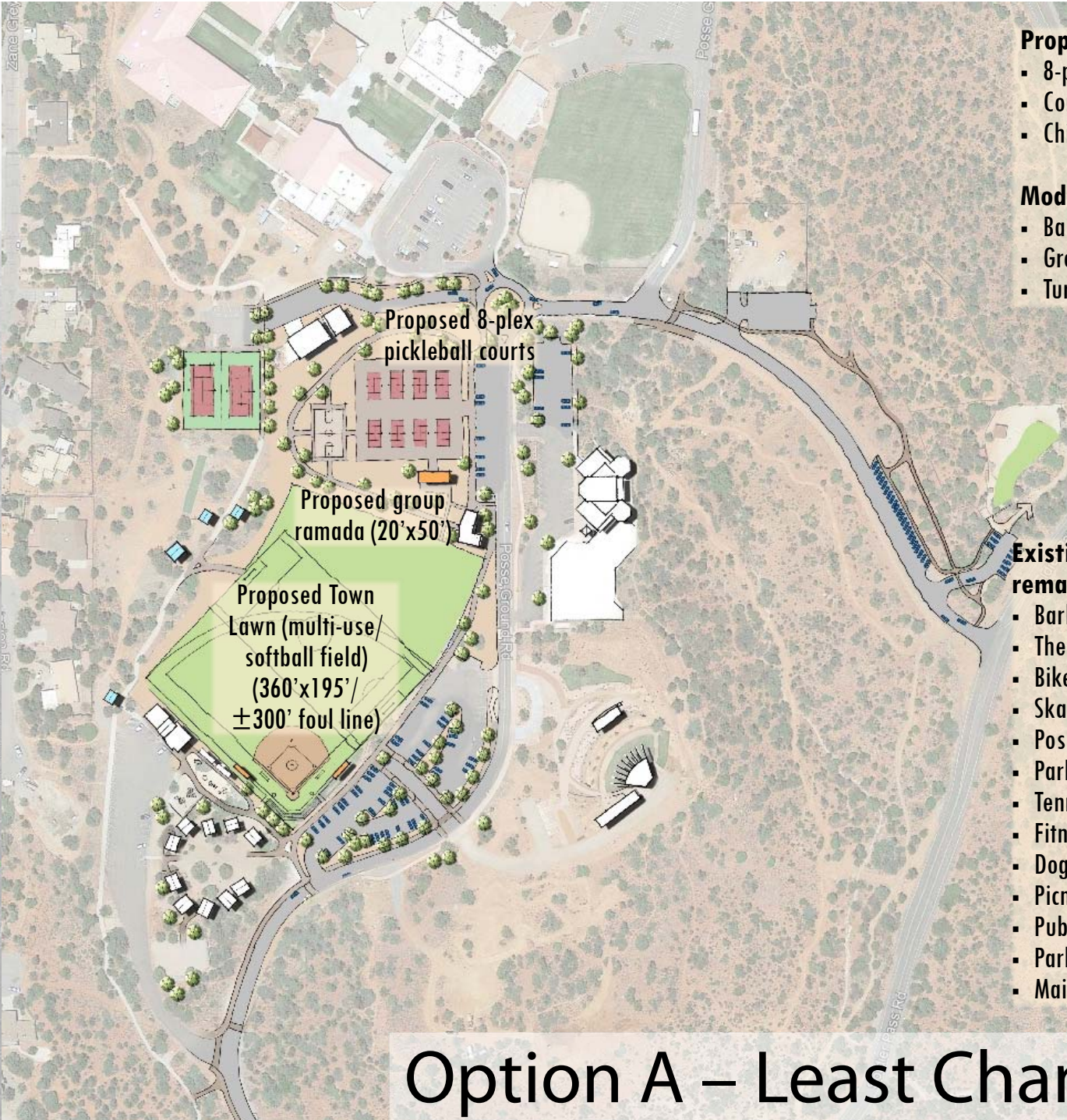
**Modified facilities:**

- Basketball court
- Group ramada
- Turf at dog park

**Existing facilities to remain as is:**

- Barbara's Park
- The Hub
- Bike skills areas
- Skate park
- Posse Ground Road
- Parking lots
- Tennis courts
- Fitness trail
- Dog park
- Picnic area
- Public restrooms
- Parks and Rec building
- Maintenance building

**Option A – Least Change**



**Proposed facilities:**

- 8-plex pickleball
- Combined turf fields
- Children's garden

**Modified facilities:**

- Basketball court
- Group ramada
- Turf at dog park

**Existing facilities to remain as is:**

- Barbara's Park
- The Hub
- Bike skills areas
- Skate park
- Posse Ground Road
- Parking lots
- Tennis courts
- Fitness trail
- Dog park
- Picnic area
- Public restrooms
- Parks and Rec building
- Maintenance building

**Option A – Least Change**



**Proposed facilities:**

- 14,000SF pavilion
- Connected event spaces (Barbara's Park and open turf)
- Pickleball courts (4)
- Expanded parking
- Children's garden
- Open turf event space

**Modified/relocated facilities:**

- Posse Ground Road
- Basketball court
- Multi-purpose pickleball/volleyball courts (1/2)

**Existing facilities to remain as is:**

- Pavilion
- The Hub
- Bike skills areas
- Skate park
- Tennis courts
- Softball field
- Soccer field
- Dog park
- Picnic area
- Soccer restroom
- Parks and Rec building
- Maintenance building

**Option B – Moderate Change**



**Proposed facilities:**

- 14,000SF pavilion
- Connected event spaces (Barbara's Park and open turf)
- Pickleball courts (4)
- Expanded parking
- Children's garden
- Open turf event space

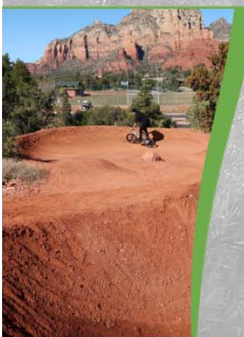
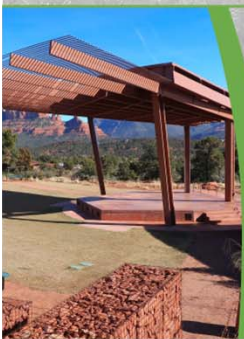
**Modified/relocated facilities:**

- Posse Ground Road
- Basketball court
- Multi-purpose pickleball/volleyball courts (1/2)

**Existing facilities to remain as is:**

- Pavilion
- The Hub
- Bike skills areas
- Skate park
- Tennis courts
- Softball field
- Soccer field
- Dog park
- Picnic area
- Soccer restroom
- Parks and Rec building
- Maintenance building

**Option B – Moderate Change**



- Proposed facilities:**
- 14,000SF pavilion
  - Expanded parking
  - Children's garden
  - Open turf event space

- Modified/relocated facilities:**
- School multi-purpose field
  - Softball field
  - Multi-purpose pickleball/volleyball courts (1/2)
  - Maintenance building

- Existing facilities to remain as is:**
- Barbara's Park
  - The Hub
  - Bike skills areas
  - Skate park
  - Basketball court
  - Tennis courts
  - Dog park
  - Picnic area
  - Public restrooms
  - Parks and Rec building

# Option C – Moderate Change <sup>13</sup>

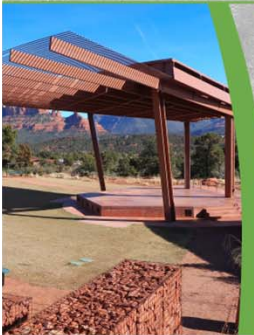


- Proposed facilities:**
- 14,000SF pavilion
  - Expanded parking
  - Children's garden
  - Open turf event space

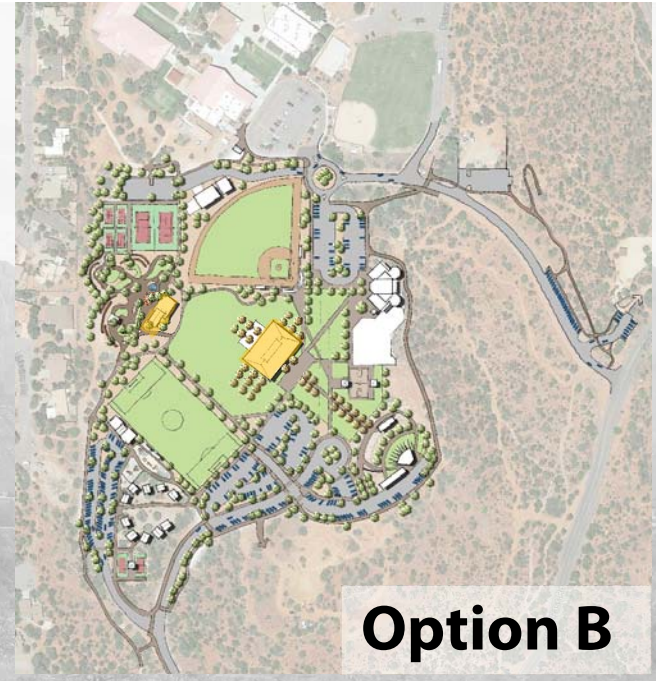
- Modified/relocated facilities:**
- School multi-purpose field
  - Softball field
  - Multi-purpose pickleball/volleyball courts (1/2)
  - Maintenance building

- Existing facilities to remain as is:**
- Barbara's Park
  - The Hub
  - Bike skills areas
  - Skate park
  - Basketball court
  - Tennis courts
  - Dog park
  - Picnic area
  - Public restrooms
  - Parks and Rec building

**Option C – Moderate Change** 14



**Option A**



**Option B**



**Option C**