



Lobby View from Multi-Family South
the Village at Saddlerock Crossing
Soldiers Pass Road & Highway 89A
Sedona Arizona

Stephen Thompson Architect. Sedona/Del Mar
Studio@StephenThompsonArchitect.com
C: 928.301.5922 4/19/2021



View from 89a looking south

the Village at Saddlerock Crossing
Soldiers Pass Road & Highway 89A
Sedona Arizona

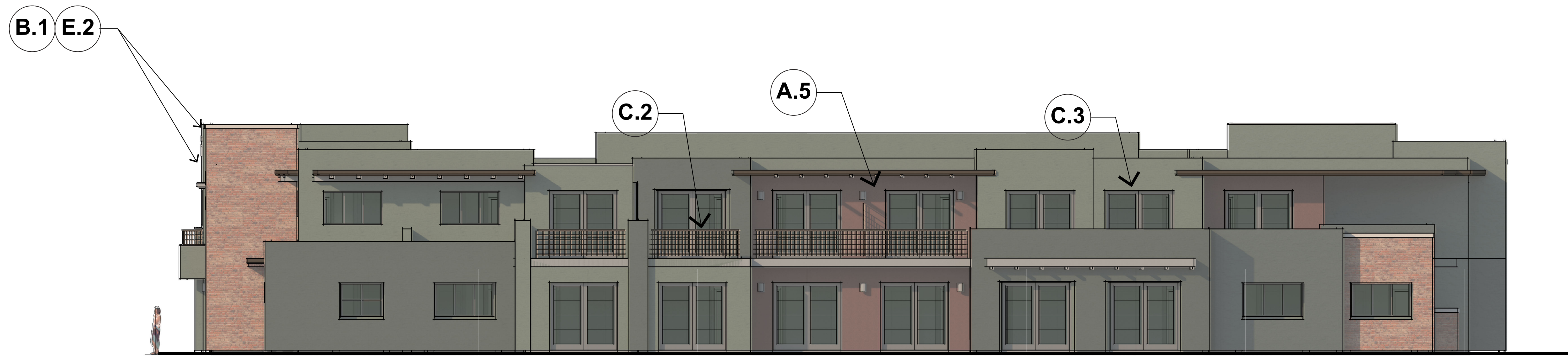
Stephen Thompson Architect. Sedona/Del Mar
Studio@StephenThompsonArchitect.com
C: 928.301.5922 4/19/2021



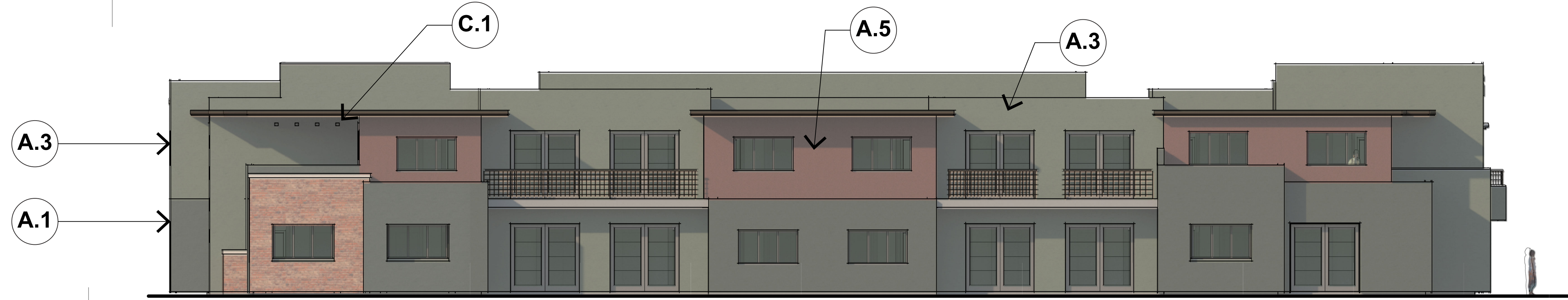
Northwest view from parking

the Village at Saddlerock Crossing
Soldiers Pass Road & Highway 89A
Sedona Arizona

Stephen Thompson Architect. Sedona/Del Mar
Studio@StephenThompsonArchitect.com
C: 928.301.5922 4/19/2021



SIDE ELEVATION- 2



SIDE ELEVATION



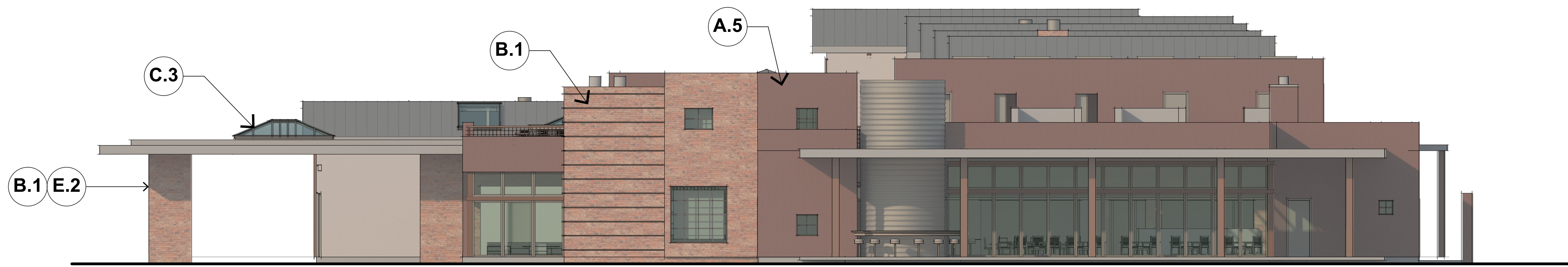
END ELEVATION (SOUTH)



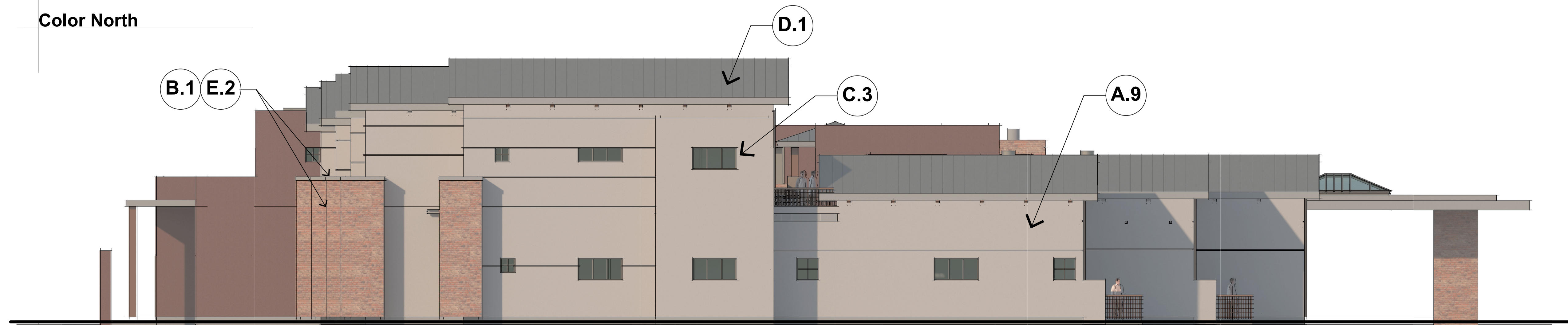
END ELEVATION (NORTH)

A.1	A.2	A.3
STUCCO.01- LRV.3	STUCCO.02- LRV.7	STUCCO.03- LRV.9
A.4	A.5	A.6
STUCCO.04- LRV.9	STUCCO.05- LRV.16	STUCCO.06- LRV.20
A.7	A.8	A.9
STUCCO.07- LRV.24	STUCCO.08- LRV.19	STUCCO.09- LRV.14
B.1	B.2	B.3
Roman Brick wall.1	Stone wall.1	Stone wall.2
ROMAN BRICK.01	STONE.01	STONE.02
C.1	C.2	C.3
Metal Material -1	Metal Material -2	Metal Material -3
METAL.01	METAL.02	METAL.03
D.1	D.2	D.3
Roof - Gray Metal	Roof - Slate composite	Roof - Flat
ROOF.01	ROOF.02	ROOF.03
E.1	E.2	F.1
Concrete Paving	Concrete Wall Caps	Wood Soffit
CONCRETE.01	CONCRETE.02	WOOD.01

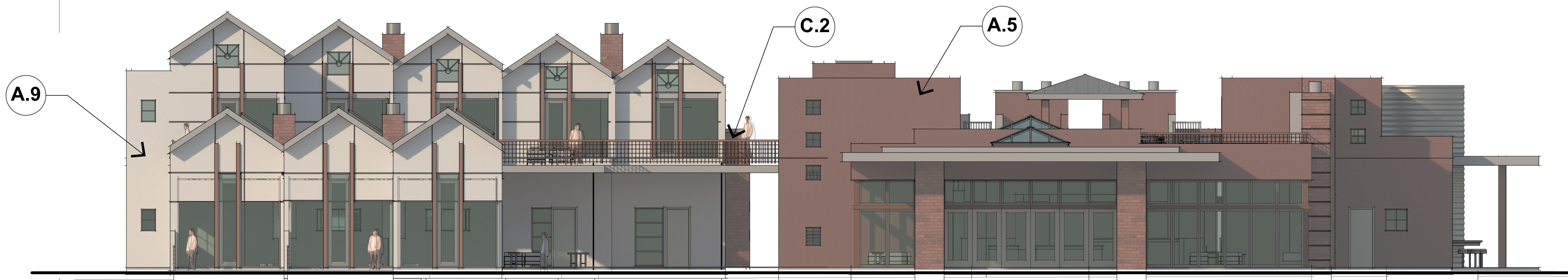
Exterior Finish Notes:
Paint: Sherwin Williams Paint
Stucco: Synthetic Integral Color, Sand Float Finish
Masonry: Roman Brick w/ cast concrete cap, Authentic Sedona Native Mix of River Rock & Red Cliff Stone
Fascia: Bronze Aluminum
Overhang & Canopy: Wood T&G Soffit w/ Steel Tube beams & columns.
Window / Door Frame: Bronze Aluminum
Low Slope Roof: Seamless w/ Mineral Cap.
Pitch Roof: Raised Seamed Metal w/ Matching Fascia Trim (Treehouse) Gray terracotta roof tile 'Ludowici', Ludoslate (Multi-Family)
Handrails / Guardrails: Painted metal railings (steel pipe frame w/ perforated metal panel)
Concrete Paving: Integral Color Exposed Sand Finish w/ Scoring



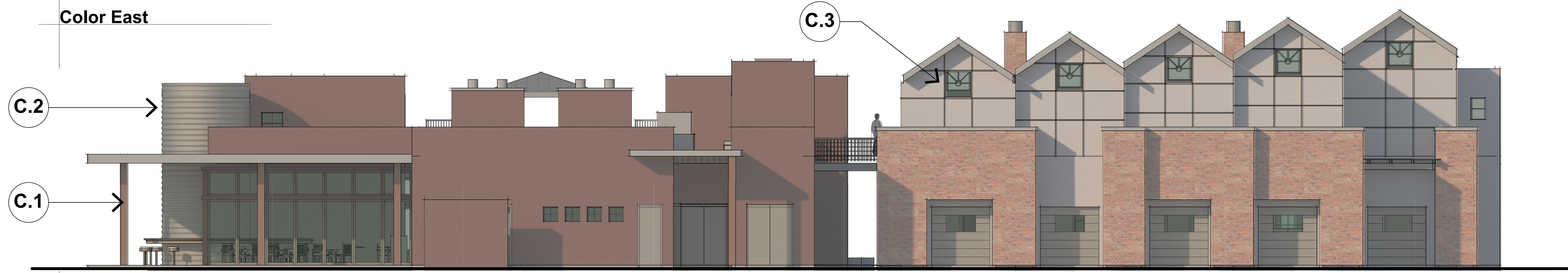
Color North



Color South-



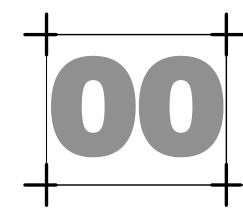
Color East

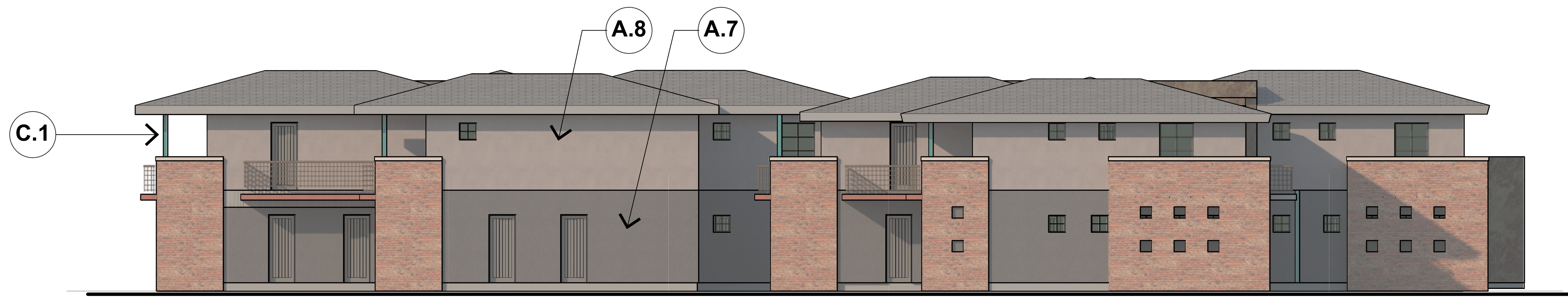


Color West

A.1	A.2	A.3
STUCCO.01- LRV.3	STUCCO.02- LRV.7	STUCCO.03- LRV.9
A.4	A.5	A.6
STUCCO.04- LRV.9	STUCCO.05- LRV.16	STUCCO.06- LRV.20
A.7	A.8	A.9
STUCCO.07- LRV.24	STUCCO.08- LRV.19	STUCCO.09- LRV.14
B.1	B.2	B.3
Roman Brick wall.1	Stone wall.1	Stone wall.2
ROMAN BRICK.01	STONE.01	STONE.02
C.1	C.2	C.3
Metal Material -1	Metal Material -2	Metal Material -3
METAL.01	METAL.02	METAL.03
D.1	D.2	D.3
Roof - Gray Metal	Roof - Slate composite	Roof - Flat
ROOF.01	ROOF.02	ROOF.03
E.1	E.2	F.1
Concrete Paving	Concrete Wall Caps	Wood Soffit
CONCRETE.01	CONCRETE.02	WOOD.01

Exterior Finish Notes:
Paint: Sherwin Williams Paint
Stucco: Synthetic Integral Color, Sand Float Finish
Masonry: Roman Brick w/ cast concrete cap, Authentic Sedona Native Mix of River Rock & Red Cliff Stone
Fascia: Bronze Aluminum
Overhang & Canopy: Wood T&G Soffit w/ Steel Tube beams & columns.
Window / Door Frame: Bronze Aluminum
Low Slope Roof: Seamless w/ Mineral Cap.
Pitch Roof: Raised Seamed Metal w/ Matching Fascia Trim (Treehouse) Gray terracotta roof tile 'Ludowici', Ludoslate (Multi-Family)
Handrails / Guardrails: Painted metal railings (steel pipe frame w/ perforated metal panel)
Concrete Paving: Integral Color Exposed Sand Finish w/ Scoring

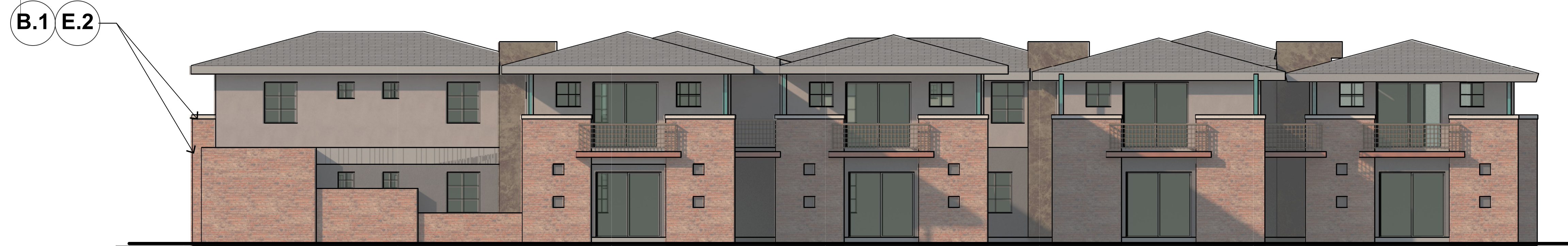




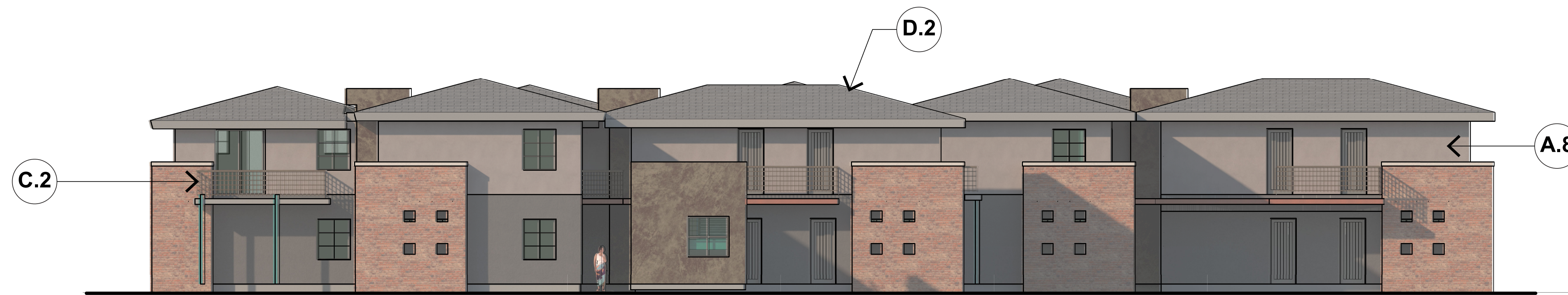
Color - West



Color - East



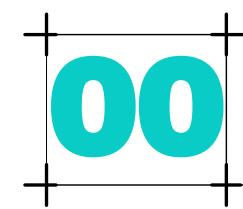
Color - North

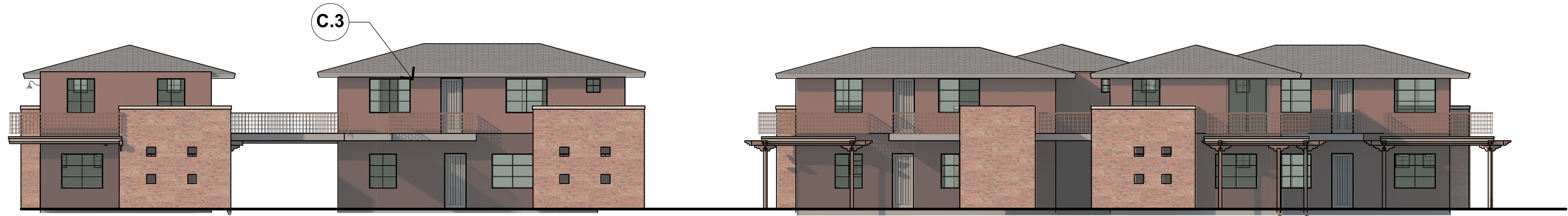


Color - South

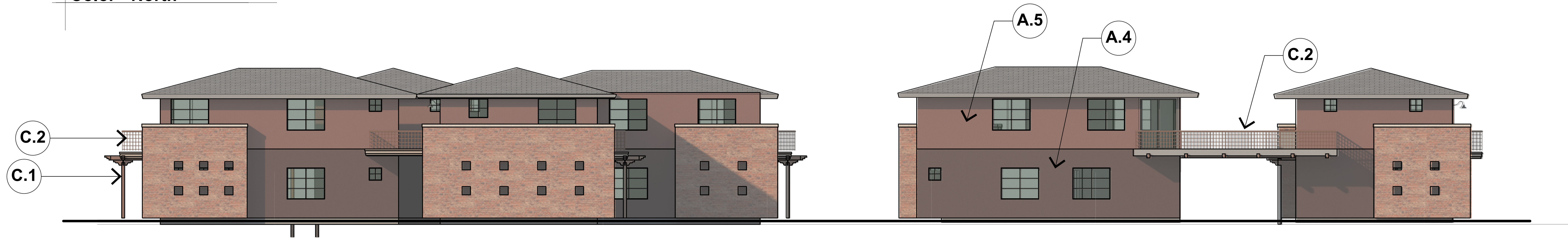
A.1 STUCCO.01- LRV.3	A.2 STUCCO.02- LRV.7	A.3 STUCCO.03- LRV.9
A.4 STUCCO.04- LRV.9	A.5 STUCCO.05- LRV.16	A.6 STUCCO.06- LRV.20
A.7 STUCCO.07- LRV.24	A.8 STUCCO.08- LRV.19	A.9 STUCCO.09- LRV.14
B.1 ROMAN BRICK.01 Roman Brick wall.1	B.2 STONE.01 Stone wall.1	B.3 STONE.02 Stone wall.2
C.1 METAL.01 Metal Material -1	C.2 METAL.02 Metal Material -2	C.3 METAL.03 Metal Material -3
D.1 ROOF.01 Roof - Gray Metal	D.2 ROOF.02 Roof - Slate composite	D.3 ROOF.03 Roof - Flat
E.1 CONCRETE.01 Concrete Paving	E.2 CONCRETE.02 Concrete Wall Caps	F.1 WOOD.01 Wood Soffit

Exterior Finish Notes:
Paint: Sherwin Williams Paint
Stucco: Synthetic Integral Color, Sand Float Finish
Masonry: Roman Brick w/ cast concrete cap, Authentic Sedona Native Mix of River Rock & Red Cliff Stone
Fascia: Bronze Aluminum
Overhang & Canopy: Wood T&G Soffit w/ Steel Tube beams & columns.
Window / Door Frame: Bronze Aluminum
Low Slope Roof: Seamless w/ Mineral Cap.
Pitch Roof: Raised Seamed Metal w/ Matching Fascia Trim (Treehouse) Gray terracotta roof tile 'Ludowici', Ludoslate (Multi-Family)
Handrails / Guardrails: Painted metal railings (steel pipe frame w/ perforated metal panel)
Concrete Paving: Integral Color Exposed Sand Finish w/ Scoring





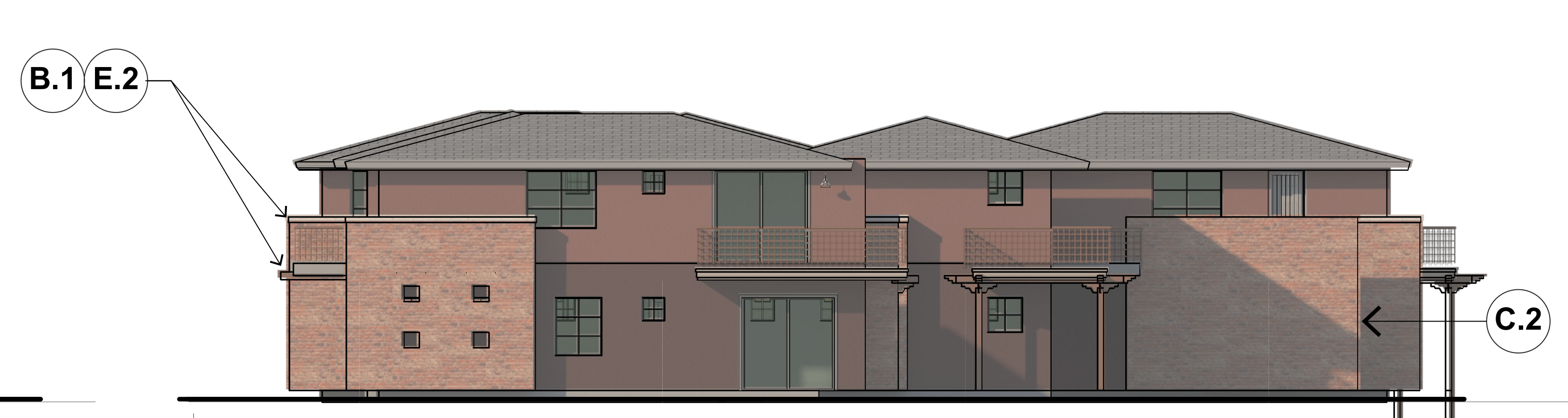
Color - North



Color - South



Color - West



Color - East

MONUMENT SIGNS

Saddlerock/ 89A Intersection

North Entry (89A)

BUILDING SIGNAGE

Building Mounted/ Business Tenant Signs

Cutout metal letters, indirectly lit with integral lighting of concealed source.

***STREET ADDRESS SIGNS**

Building Mounted

Addressing as required by fire code requirements.
* Exempted from the permit process.

***INFORMATION SIGNS**

Freestanding

Low-level and integrated into paving or landscape context and of color & material to harmonize with project design. It will not be visible from off site areas. General circulation lighting is expected to illuminate this signage.

* Exempted from the permit process.

***ON-SITE DIRECTIONAL SIGNS**

Freestanding

* Exempted from the permit process.

***ACCESSIBILITY SIGNS**

Various

ADA Parking, Building Entry, Restrooms

Where required by ADA and code requirements.

* Exempted from the permit process.

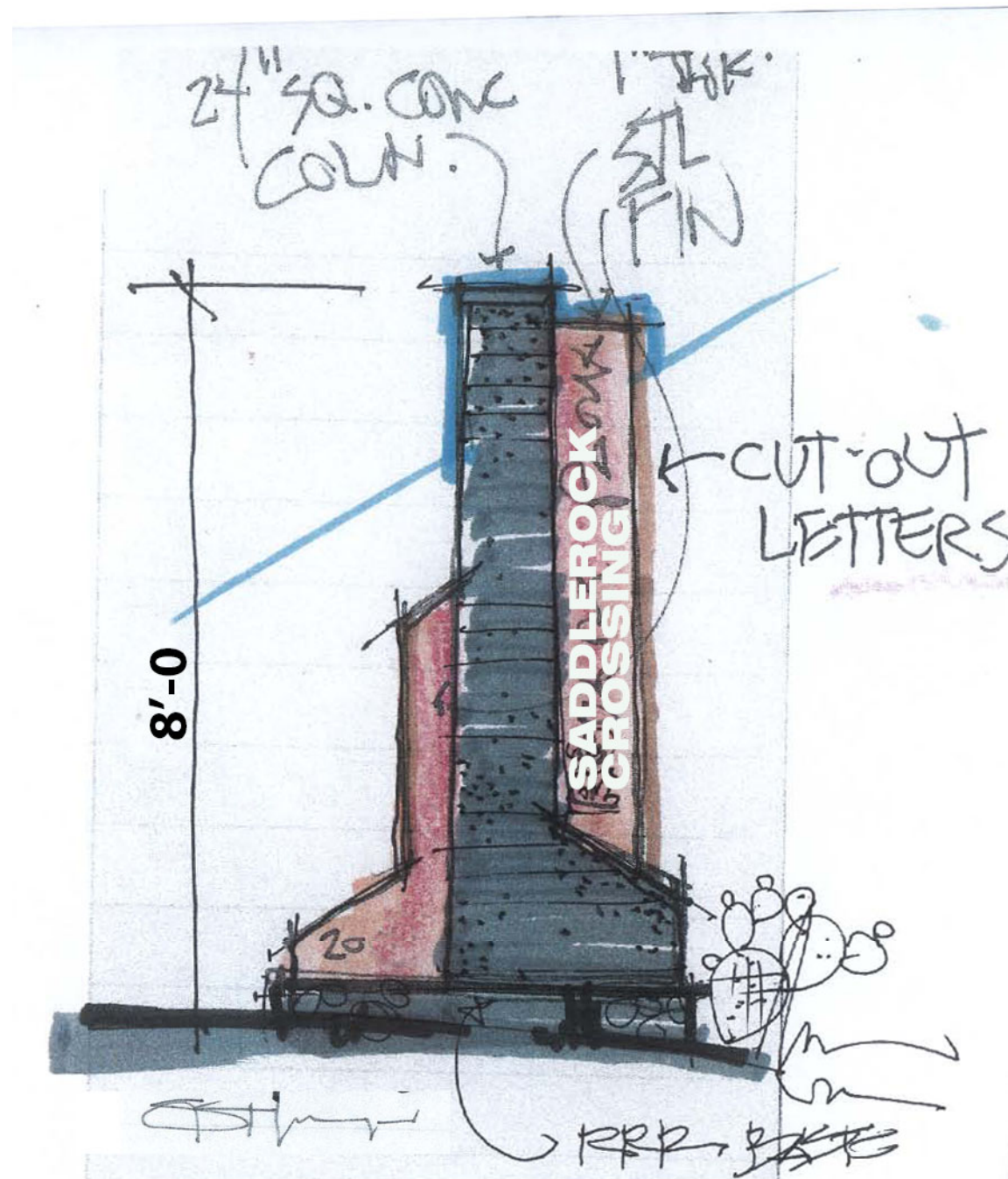


MASTER SIGN PLAN

1"=30'-0"
0 30 60 90
TOTAL SITE AREA= 6.36 ACRES

the Village at Saddlerock Crossing
Soldiers Pass Road & Highway 89A
Sedona Arizona

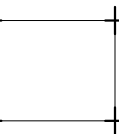
Stephen Thompson Architect. Sedona/Del Mar
Studio@StephenThompsonArchitect.com
C: 928.301.5922 4/19/2021 3/19/2021 4:32:58 PM

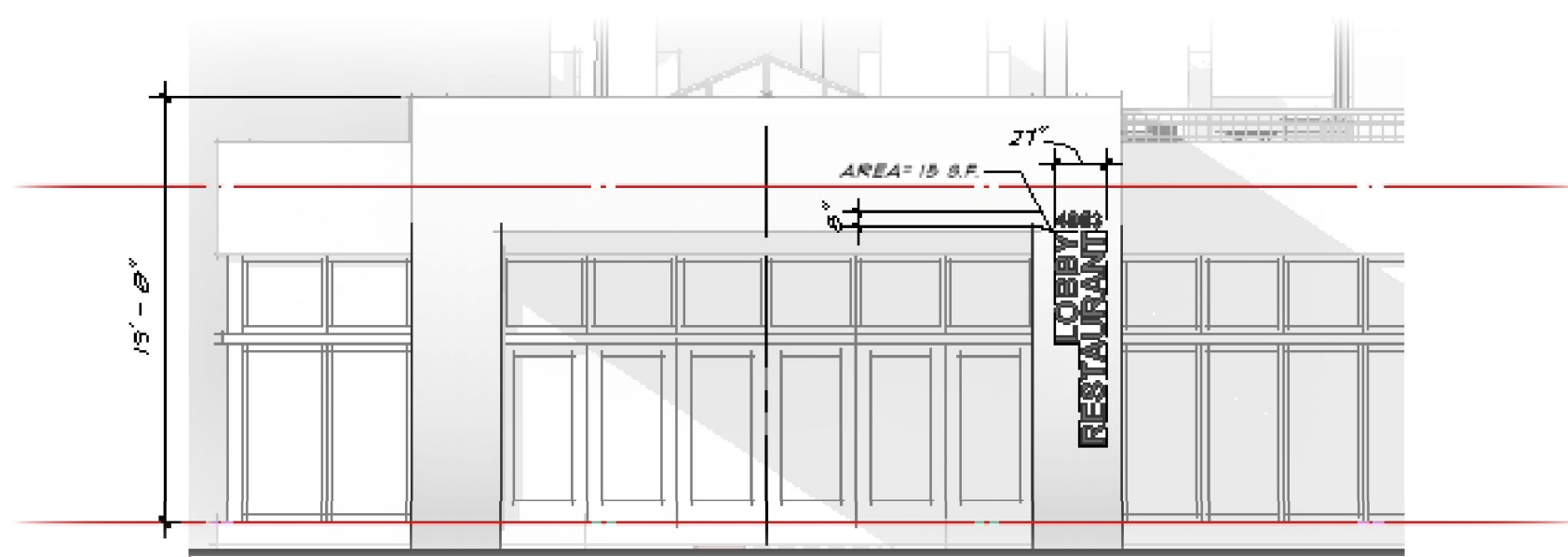


MONUMENT SIGNAGE

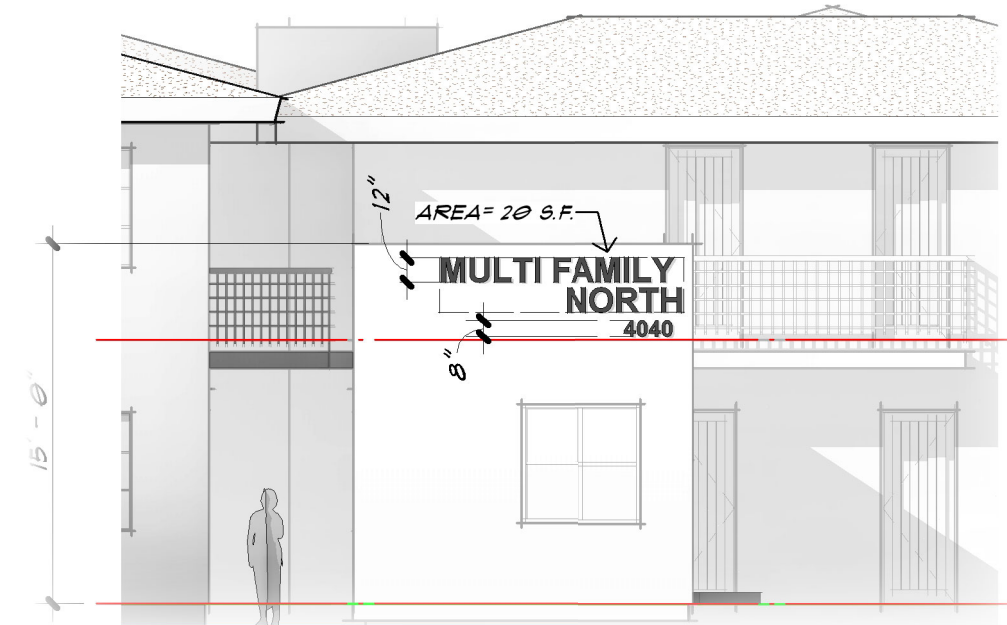
the Village at Saddlerock Crossing
Soldiers Pass Road & Highway 89A
Sedona Arizona

Stephen Thompson Architect. Sedona/Del Mar
Studio@StephenThompsonArchitect.com
C: 928.301.5922 4/19/2021 3/19/2021 4:32:58 PM

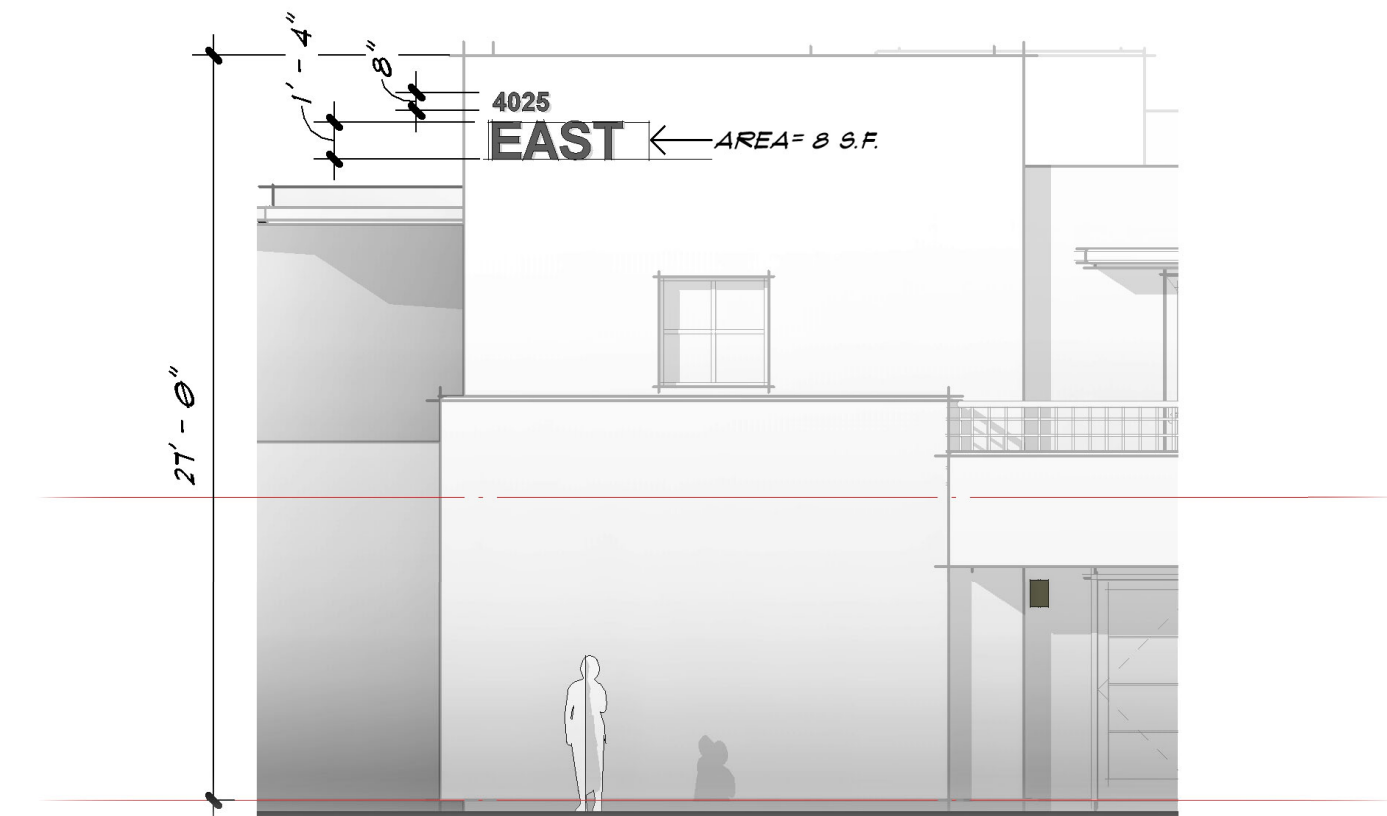




LOBBY BUILDING



MULTI-FAMILY NORTH



TYP. GUEST ROOM WING

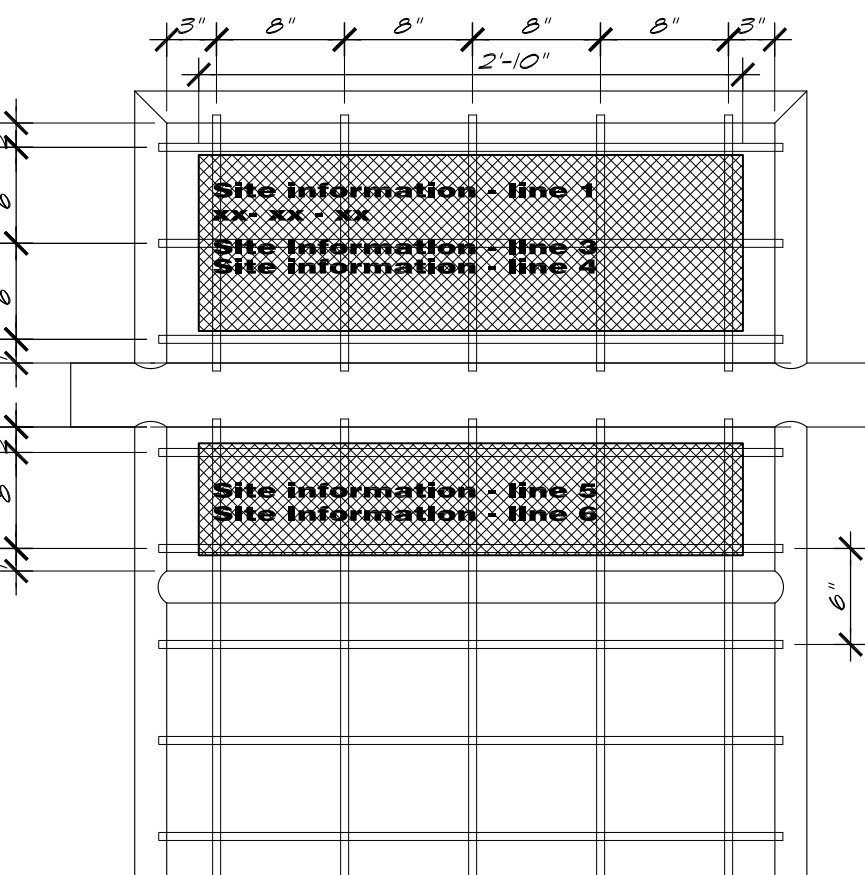
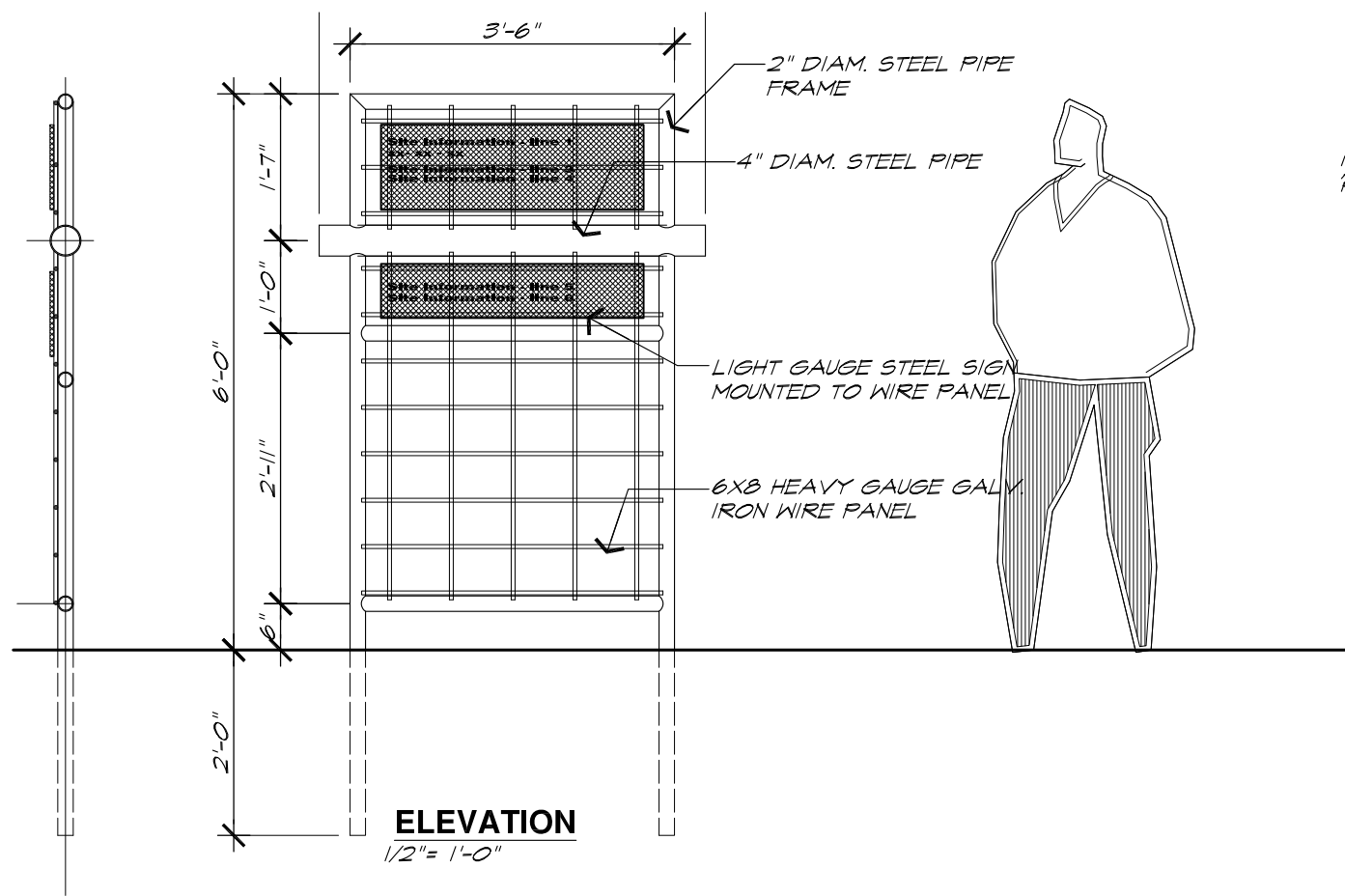


MULTI-FAMILY SOUTH

BUILDING SIGNAGE

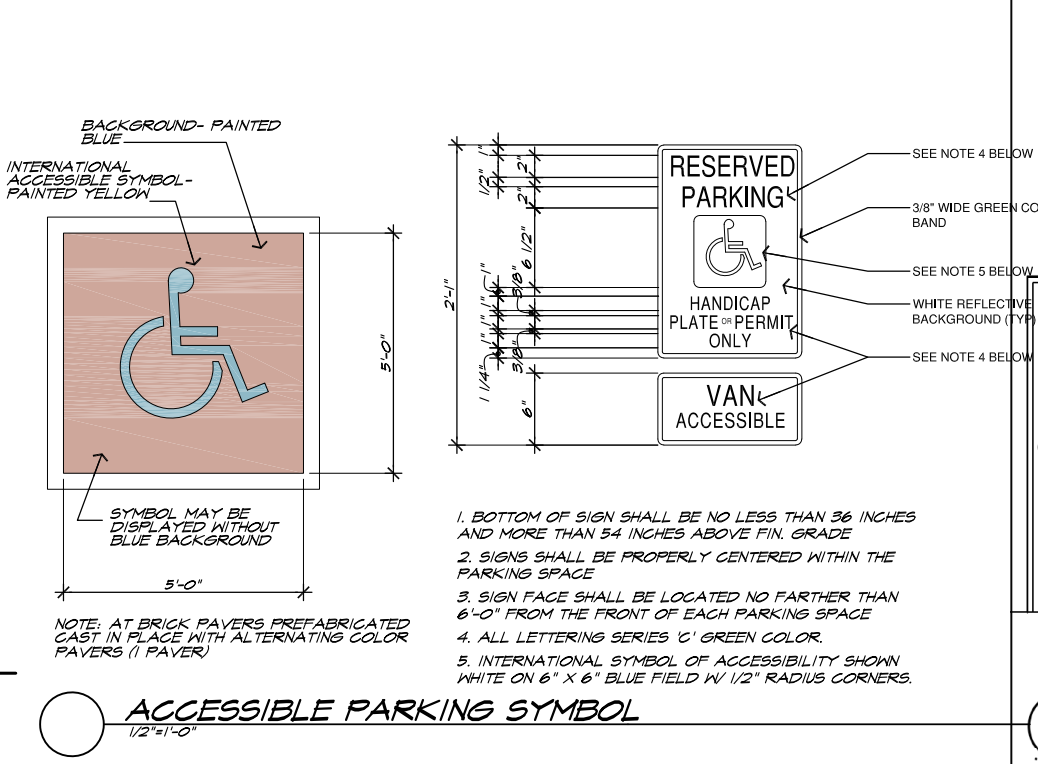
the Village at Saddlerock Crossing
 Soldiers Pass Road & Highway 89A
 Sedona Arizona

Stephen Thompson Architect. Sedona/Del Mar
 Studio@StephenThompsonArchitect.com
 C: 928.301.5922 4/19/2021 3/19/2021 4:32:58 PM

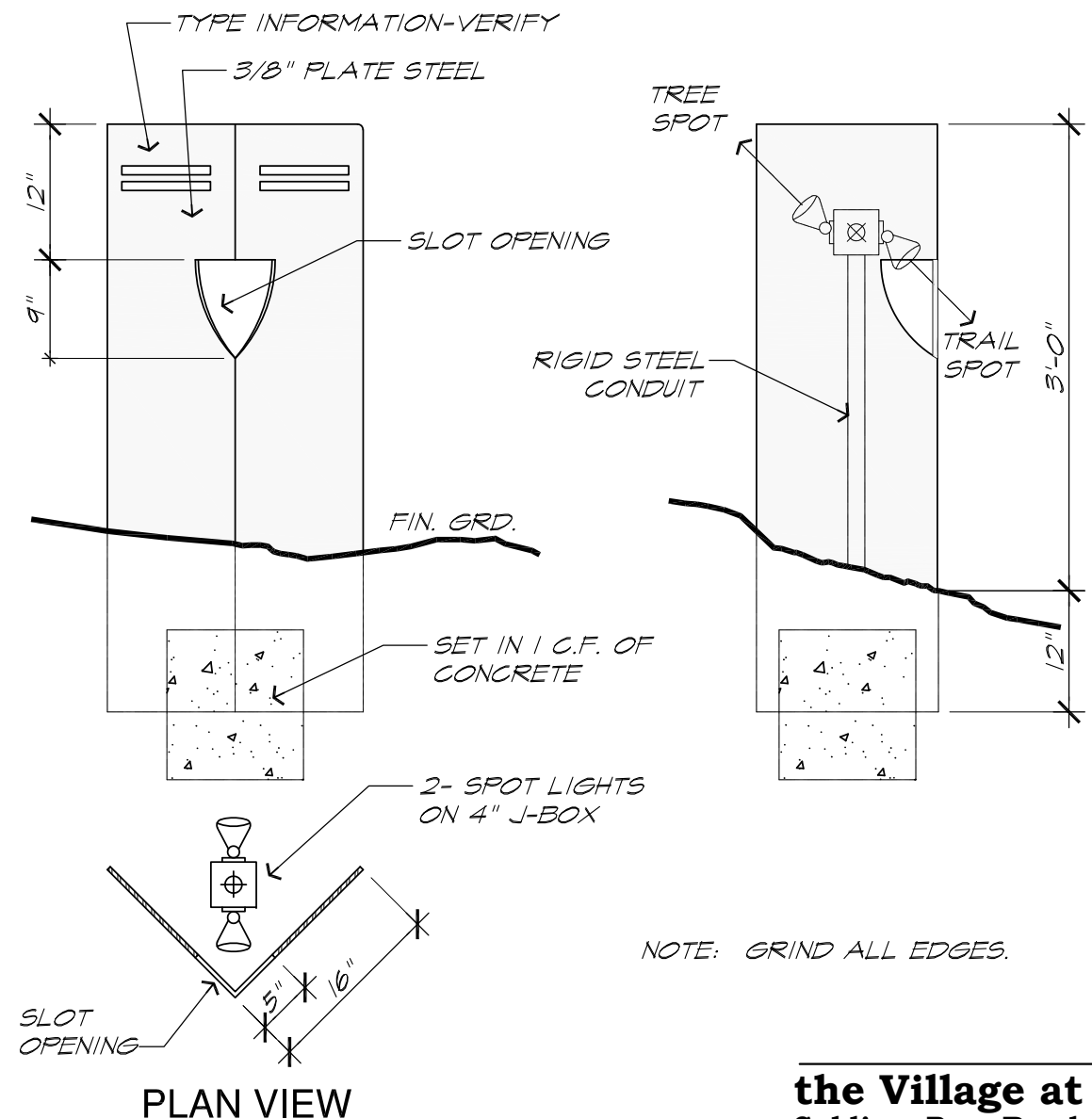
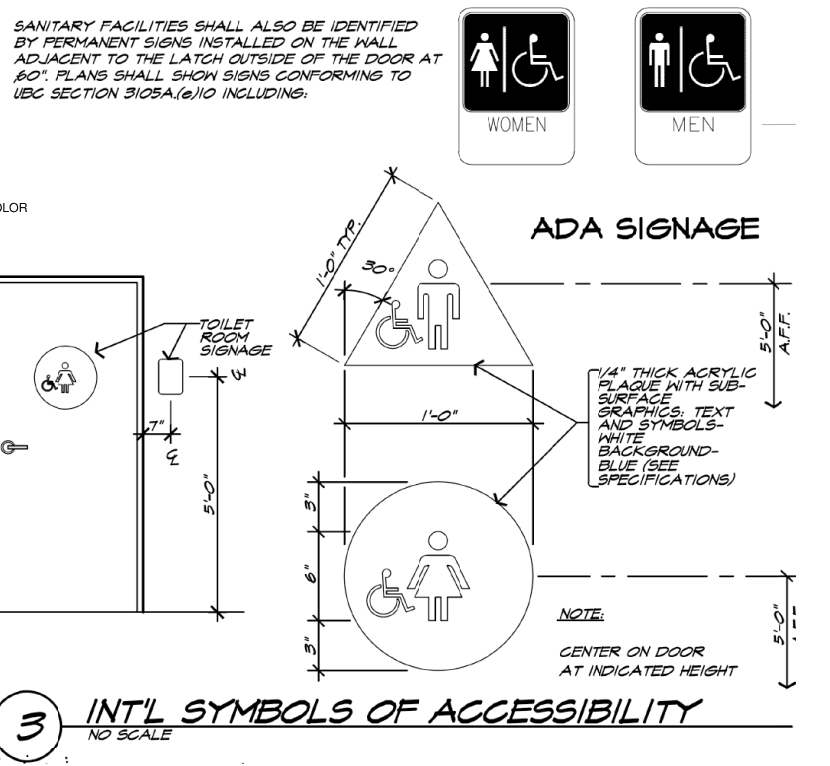


SITE SIGNAGE
2021

DIRECTIONAL SIGNAGE



ACCESSIBILITY SIGNAGE



INFORMATION SIGNAGE