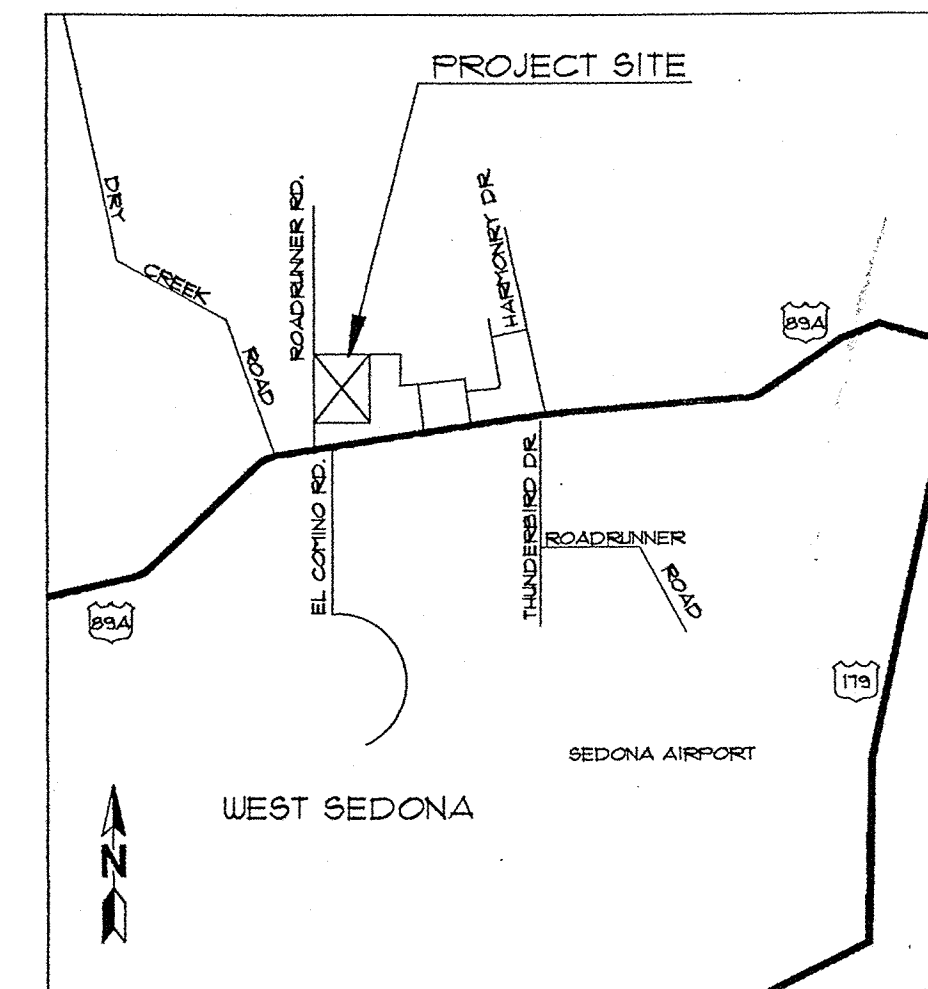


SEDONA COURTHOUSE PLAZA

SEDONA, ARIZONA

INDEX OF DRAWINGS

- PC-1 -- COVER SHEET / GENERAL NOTES
- PC-2 -- FOUNDATION PLAN / ANCHOR BOLT LAYOUT
- PC-3 -- PLAZA LEVEL PLANK LAYOUT / FRAMING PLAN
- PC-4 -- SECTIONS & DETAILS
- PC-5 -- SECTIONS & DETAILS



VICINITY MAP

DESIGN NOTES:

- CORESLAB STRUCTURES (ARIZ) INC. IS RESPONSIBLE ONLY FOR THE DESIGN AND FABRICATION OF ITS OWN PRODUCTS.
- ERECT ALL OF CORESLAB'S PRODUCTS WITH UNIT MARK NUMBER ORIENTED AS SHOWN ON PLANS.
- DESIGN OF ALL STEEL IN C.I.P. TOPPING TO MEET WHEEL LOAD, DIAPHRAGM ACTION, AND ANY OTHER STRUCTURAL REQUIREMENTS IS TO BE PROVIDED BY THE ENGINEER OF RECORD.
- DESIGN LOADS:

SEISMIC LOADS	SEE STRUCTURAL DRAWINGS
WIND LOADS	SEE STRUCTURAL DRAWINGS
2-1/2" TOPPING (50 PCF)	36 PSF
• BOYNTON BUILDING:	
LIVE LOAD (REDUCIBLE)	50 PSF
SUPERIMPOSED DEAD LOAD	40 PSF
• COURTHOUSE BUILDING:	
LIVE LOAD (REDUCIBLE)	100 PSF
SUPERIMPOSED DEAD LOAD	20 PSF
• PLAZA & EXIT BALCONY:	
LIVE LOAD (NON-REDUCIBLE)	50 PSF
SUPERIMPOSED DEAD LOAD	65 PSF

PRECAST MEMBER DEAD LOADS:

10HC48 (50 PCF)	75 PSF
12-10T16 (50 PCF)	558 PLF
12-10T22 (50 PCF)	450 PLF
12-10LB26 (50 PCF)	442 PLF
18C20 (50 PCF)	375 PLF
12" P/S SLAB (50 PCF)	15 PLF

- ALL REINFORCING BARS (1/2" AND SMALLER) TO BE WELDED FOR FABRICATION OF ASSEMBLIES TO BE GRADE 60, A706.
- CORESLAB STRUCTURES RESERVES THE RIGHT TO SUBSTITUTE STRAND PATTERNS FOR OTHERS OF EQUAL OR GREATER CAPACITY TO FACILITATE PRODUCTION REQUIREMENTS.
- CONCENTRATED LOADS DURING ERECTION / CONSTRUCTION SHALL BE DISTRIBUTED NOT TO EXCEED THE LIVE LOAD LOADING.

ERECTION NOTES:

- ERECT ALL OF CORESLAB'S PRODUCTS WITH THE UNIT MARK NUMBER ORIENTED AS SHOWN ON PLANS.
- DRY PACK BETWEEN COLUMN AND FOOTING, WALL PANEL AND FOOTING AND FOR COLUMN BASE POCKETS SHALL HAVE A MIN. STRENGTH OF 6000 PSI.
- DRY PACKING UNDER COLUMN BASE FLATES AND AT THE POCKETS FOR ANCHOR BOLTS SHALL BE DONE IMMEDIATELY AFTER ERECTION OF COLUMNS UNLESS OTHERWISE APPROVED BY CORESLAB STRUCTURES' ENGINEERING DEPARTMENT.
- ALL CONNECTIONS BETWEEN P/C MEMBERS SHALL BE COMPLETED BEFORE ERECTING THE FLOOR ABOVE UNLESS OTHERWISE APPROVED BY CORESLAB STRUCTURES' ENGINEERING DEPARTMENT.
- ALL BEAMS (HOLLOWCORE & ILL. BEAMS, ETC) SHALL BE ERECTED TO OBTAIN APPROXIMATELY THE SAME BEARING LENGTH AT BOTH ENDS. ENGINEERING SHALL BE NOTIFIED WHEN BEARING LENGTHS ARE SIGNIFICANTLY LESS THAN SHOWN ON PLANS.
- USE ALL LIFTING MECHANISMS PROVIDED FOR ERECTION OF P/C PRODUCTS OR AS SHOWN ON ERECTION DRAWINGS AND COORDINATED WITH ENGINEERING.

GENERAL NOTES-HOLLOWCORE:

- CONTRACTOR TO VERIFY ALL DIMENSIONS AND DETAILS.
- HOLLOWCORE PLANKS MANUFACTURED BY CORESLAB STRUCTURES (ARIZ) INC. ARE COVERED BY ICBO EVALUATION REPORT NO. PCF-412L.
- ALL OPENINGS TO BE PROVIDED BY CORESLAB STRUCTURES (ARIZ) INC. MUST BE SHOWN ON THIS DRAWING. OPENINGS MUST BE LOCATED SO AS TO NOT CUT ANY DESIGN STRAND. CORESLAB WILL NOT PROVIDE ANY OPENINGS OR BLOCKOUTS SMALLER THAN 10"x10".
- ALL HOLES OR OPENINGS CUT BY OTHERS SHOULD BE COORDINATED WITH CORESLAB STRUCTURES (ARIZ) INC. SO AS TO NOT CUT ANY DESIGN STRAND OR OTHERWISE REDUCE THE LOAD CARRYING CAPACITY OF THE PLANKS.
- DO NOT SCALE THESE DRAWINGS.
- CORESLAB STRUCTURES (ARIZ) INC. WILL PLUG HOLLOWCORE VOIDS.
- CORESLAB STRUCTURES (ARIZ) INC. WILL NOT PROVIDE CAULKING OF THE UNDERSIDE LONGITUDINAL JOINT BETWEEN ADJACENT PRECAST HOLLOWCORE PLANKS.
- GROUTING REFERRED TO IN THE TABLE ON THIS SHEET INCLUDES ONLY THE GROUTING OF THE SHEAR KEY BETWEEN PLANKS AND THAT SHOWN IN OUR DETAILS AS BEING BY C.S.I. ANY OTHER GROUTING WILL BE BY OTHERS.
- ALL DRY-PACKING AND SOLID-COURING IS BY OTHERS.
- STRENGTH OF GROUT IN SHEAR KEY SHALL BE 3000 PSI MINIMUM.
- MANUFACTURED FINISH:

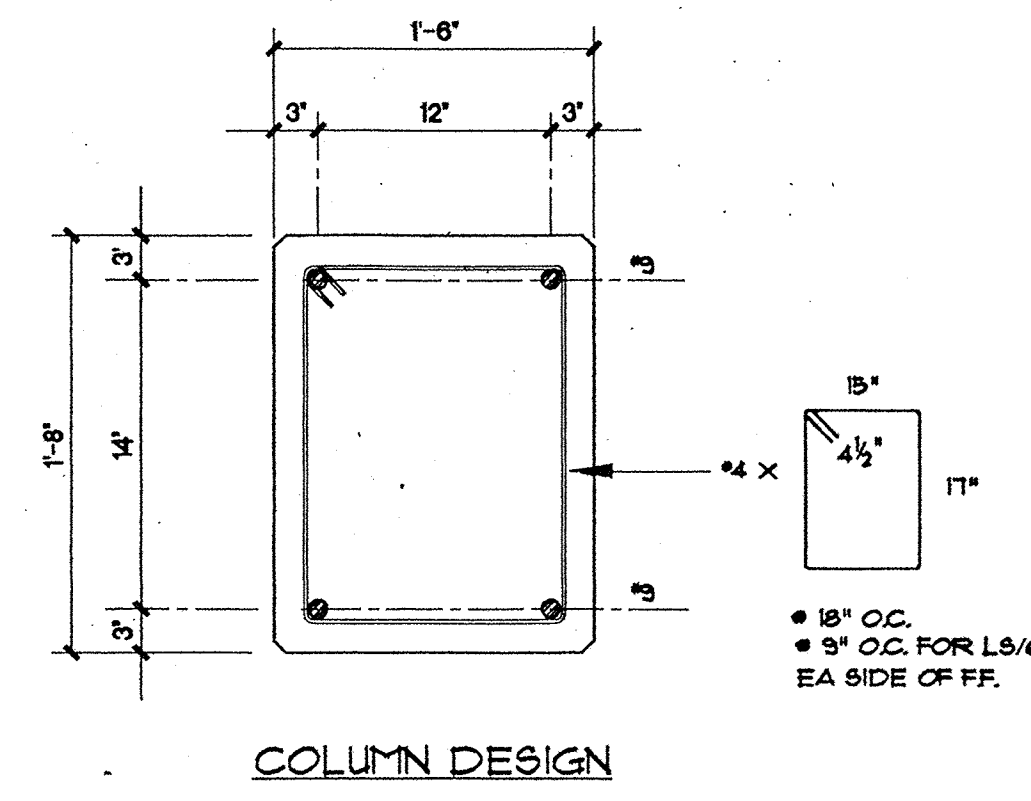
A. FLOOR	() CARFED DIRECT	(X) RAKED
B. ROOF	() STANDARD	() MACHINE FINISH
C. BALCONY	()	

GENERAL CONTRACTOR NOTES:

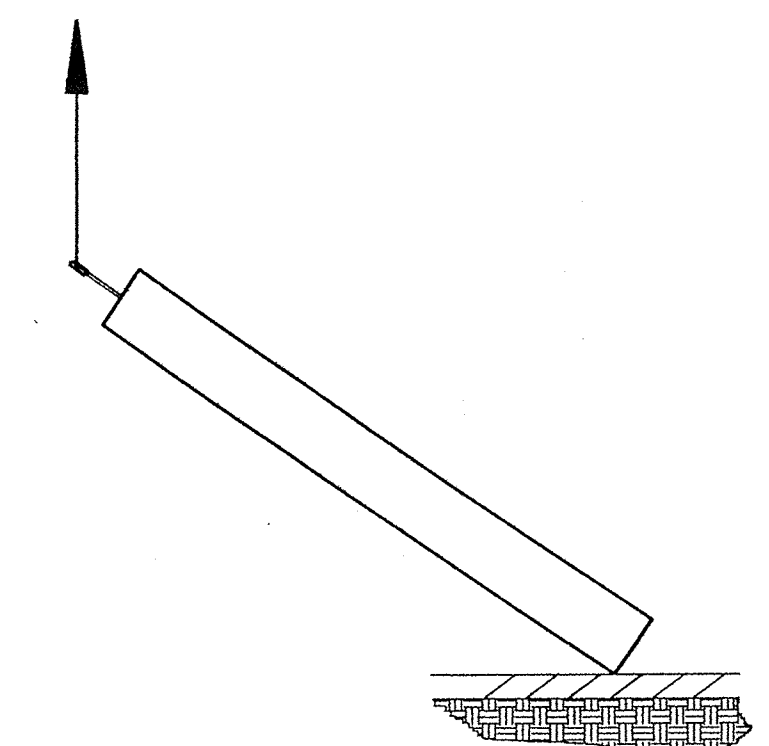
- THE COLUMN ANCHOR BOLTS SHALL BE WITHIN 1/4" OF THE CORRECT PLACEMENT AND SHALL BE PLUMB AND TRUE.
- THE ANCHOR BOLTS SHALL BE PROTECTED FROM DAMAGE AND RUST BY THE GENERAL CONTRACTOR. IF NECESSARY TO CLEAN OR RETREAD, THE GENERAL CONTRACTOR SHALL HAVE THIS COMPLETED IN ADVANCE OF PRECAST ERECTION SO AS NOT TO HINDER THE ERECTION PROCESS.
- P/C RETAINING WALLS SHALL BE BRACED BEFORE BACK FILLING BY THE GENERAL CONTRACTOR. REMOVE BRACES ONLY AFTER WALL IS CONNECTED TO C.I.P. SLABS. LOAD STRUCTURE EQUALLY WHEN BACKFILLING.
- PRECAST BEAMS HAVE BEEN DESIGNED TO ACT IN COMPOSITE ACTION WITH THE TOPPING. FOR ADDITIONAL INFORMATION, SEE SECTIONS 5, 6 & ANY SIMILAR DETAILS.
- REINFORCEMENT IN THE TOPPING NEEDS TO BE DESIGNED FOR ALL EXPECTED LOADS (SEE NOTE 4, DESIGN LOADS).
- OPENINGS SMALLER THAN 10" IN DIAMETER OR 10" SQUARE ARE TO BE CUT IN PLACE BY GENERAL CONTRACTOR. NO HOLES MAY BE CUT OR DRILLED IN PRECAST PRODUCTS WITHOUT EXPRESS APPROVAL FROM CORESLAB STRUCTURES' ENGINEERING DEPARTMENT.
- ANY SHORING OR BRACING INSTALLED BY CORESLAB STRUCTURES (ARIZ) INC. SHALL NOT BE REMOVED OR RELOCATED WITHOUT THE APPROVAL OF CORESLAB STRUCTURES' DESIGN ENGINEER OR ERECTION SUPERVISOR.
- CONSTRUCTION MATERIALS WHEN PLACED ON FLOORS OR ROOFS DURING CONSTRUCTION SHALL BE SPREAD OUT SO THAT THE ASSOCIATED LOAD DOES NOT EXCEED THE DESIGN LIVE LOAD PER SQUARE FOOT. IF THE FLOOR OR ROOF RECEIVES A CONCRETE TOPPING, AND THE TOPPING HAS NOT BEEN PLACED, ADDITIONAL CARE MAY BE REQUIRED. PROVIDE ADEQUATE SHORING AND/OR BRACING WHERE THE SYSTEM HAS NOT ATTAINED THE DESIGNATED DESIGN STRENGTH.
- C.I.P. WALL BRACES MUST BE PLACED AS TO NOT INTERFERE WITH CORESLAB (ARIZ) INC. ERECTION OF PRECAST PRODUCTS. PLEASE COORDINATE PLACEMENT OF BRACES WITH CORESLAB (ARIZ) INC. ERECTION DEPARTMENT.

ITEM	GENERAL			
	SUPPLIED		INSTALLED	
	OTHERS	CORESLAB	OTHERS	CORESLAB
PRECAST HC SLABS		✓		✓
PRECAST OR HC BALCONIES		N/A		N/A
PRECAST STAIR LANDINGS		N/A		N/A
THE STEEL	✓		✓	
BEARING PADS		✓		✓
FLOOR FINISHING	N/A		N/A	
STEEL BRACERS		N/A		N/A

SLAB REINFORCEMENT			
TYPE	STRANDS (210 KSI)	TYPE	STRANDS (210 KSI)
(A)	TOP: -- BOTT.: 4 - 1/2"		
(B)	TOP: -- BOTT.: 6 - 1/2"		
(C)	TOP: -- BOTT.: 8 - 1/2"		
(D)	TOP: -- BOTT.: 10 - 1/2"		
(E)	TOP: -- BOTT.: --		

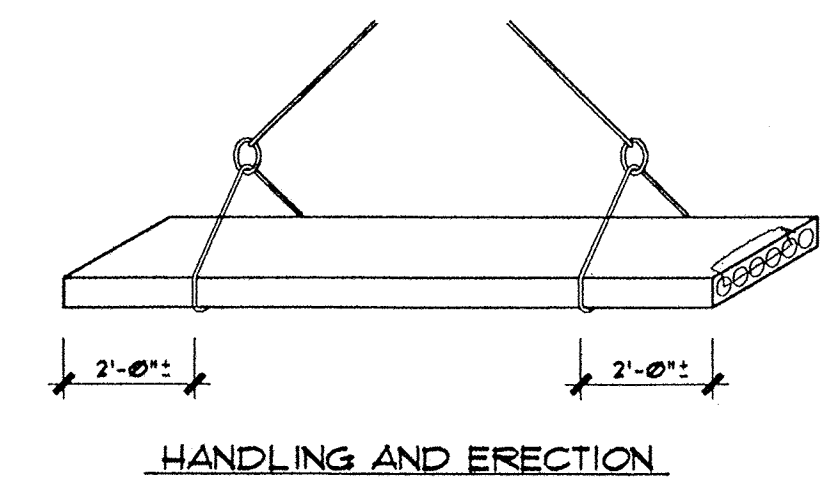


COLUMN DESIGN

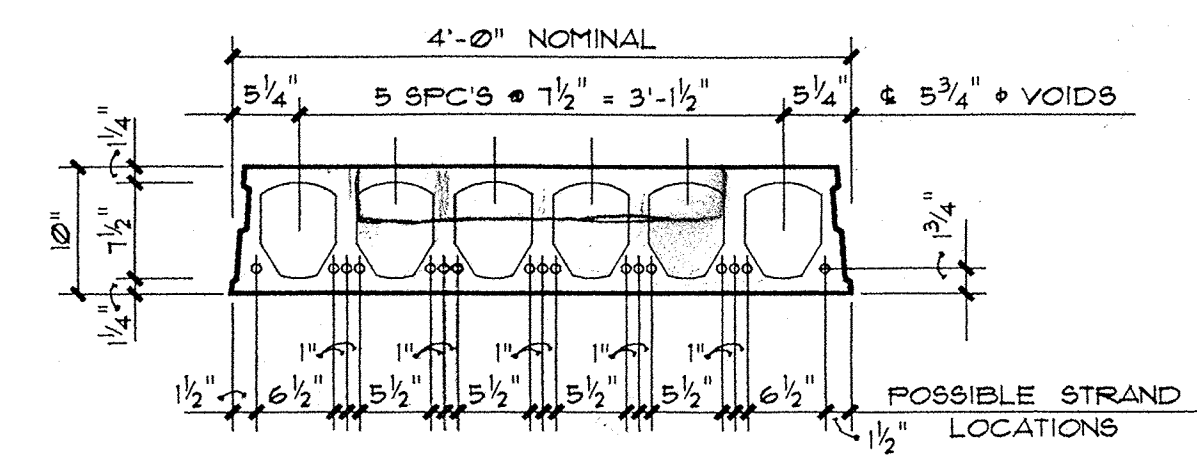


COLUMN ERECTION
INTERIOR COLUMNS

(f'c = 6000 psi)
(f'ci = 3000 psi)



HANDLING AND ERECTION



10" HOLLOWCORE
CROSS-SECTION

ISSUED FOR ERECTION
FEB 19 97

5026 South 43rd Avenue
P.O. Box 18150
Phoenix, Arizona 85005
(602) 237-3875

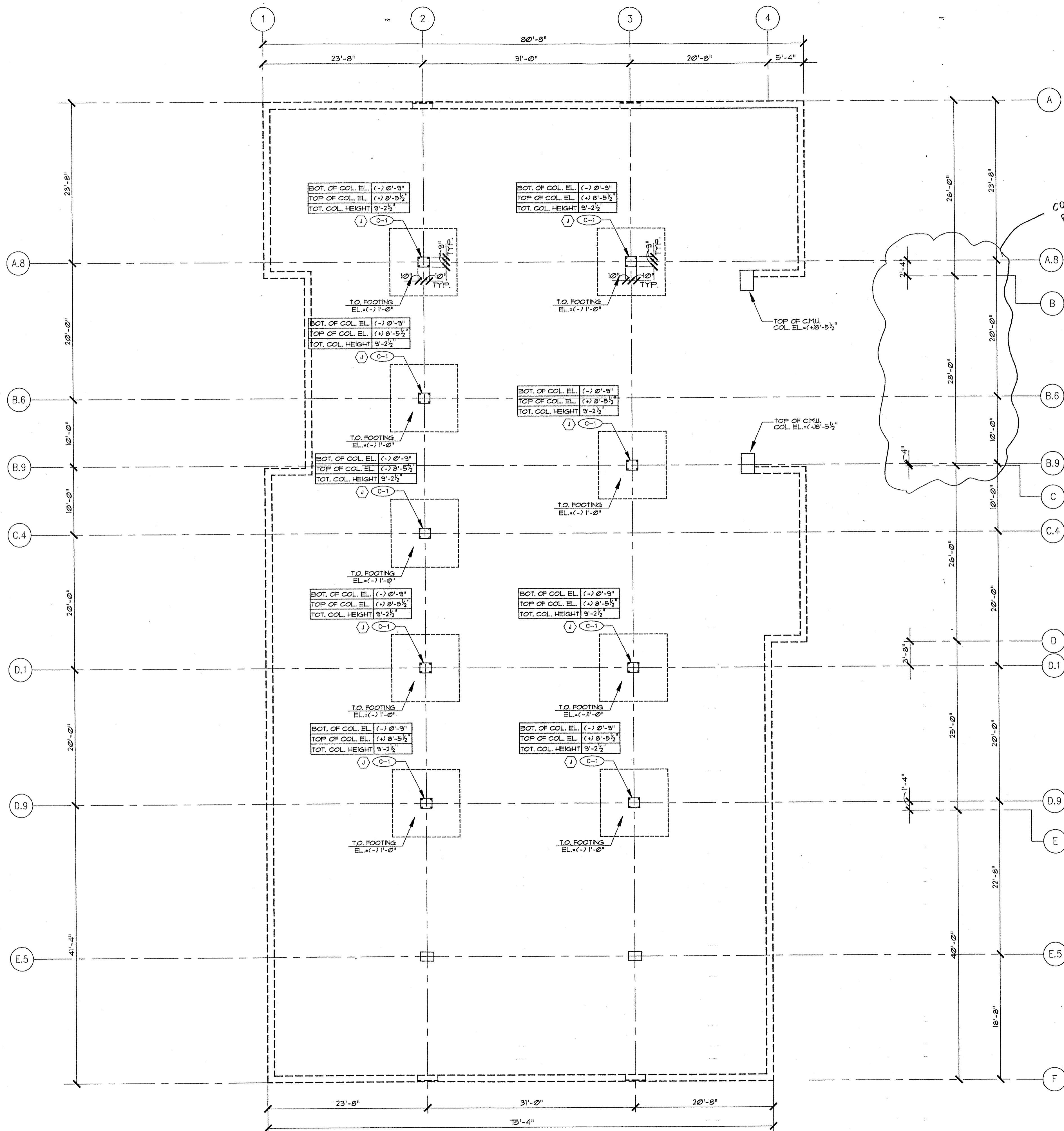
CORESLAB STRUCTURES (ARIZ) INC.

No.	Revision	By	Date
364			

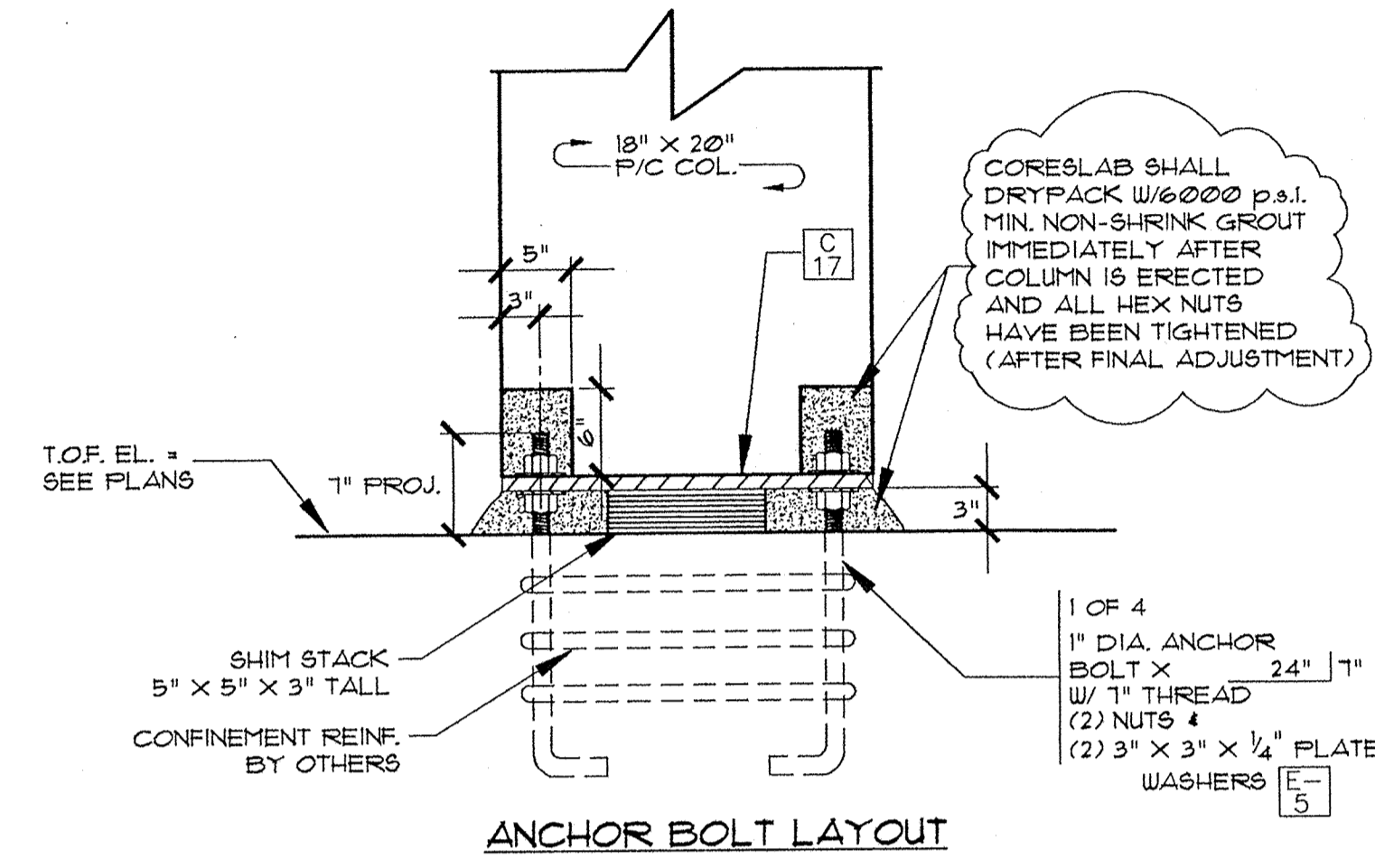
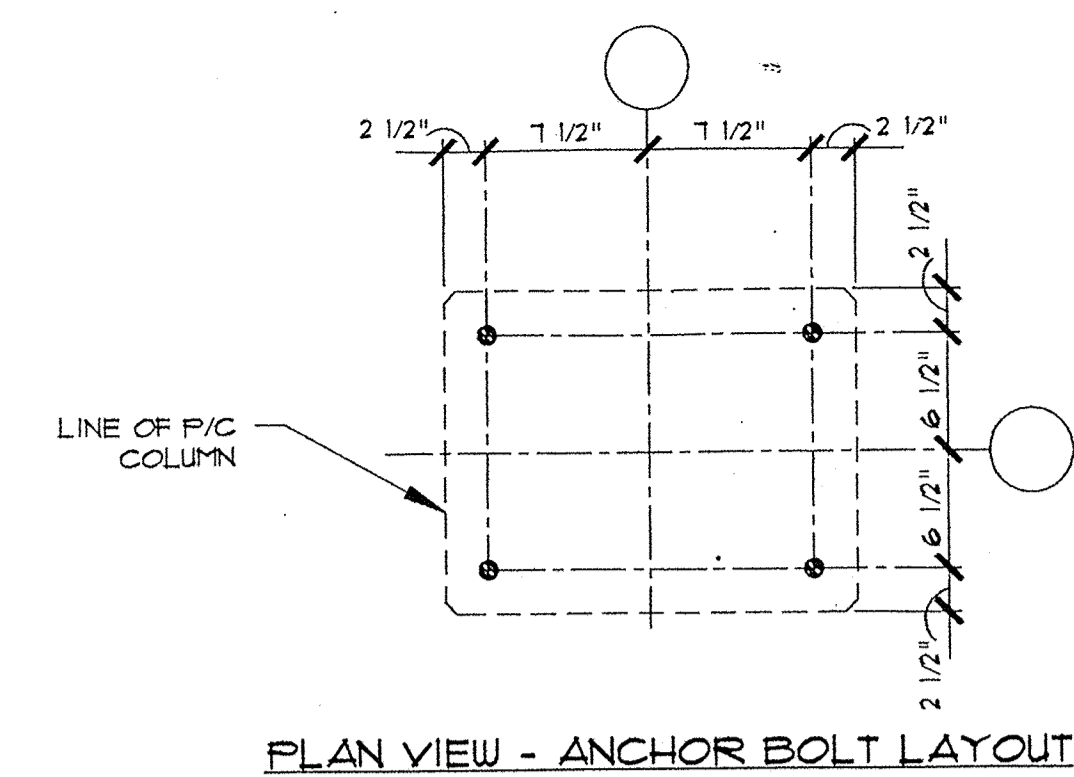
Architect: CARL E. NELSON & ASSOC.
Engineer: PAUL KOEHLER
Customer: CARDINAL DEVELOPMENT
Project Leader: DAVE BAIRD / 325
Drawn: GUY M. [Signature]
Ext. Checked: JPL
Date: 2/12/97
362

COVER PAGE
GENERAL NOTES
Structure: COURTHOUSE PLAZA COMPLEX
Location: SEDONA, ARIZONA

Sheet Number
PC-1
Job Number
1008



CONTRACTOR
PLEASE VERIFY
THERE IS A 4" &
DEW'L'S (22" @ 4" ON A-2
& 22" @ 4" ON A-2)

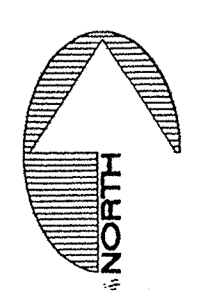


ISSUED FOR ERECTION
FEB 19 97

NOTE: ELEVATIONS ARE REFERENCED FROM FIN. PARKING GARAGE SLAB ELEVATION 0'-0" = (4374.82' ACTUAL) AND ARE GIVEN AS (+) OR (-) FEET AND INCHES

LEGEND	
BOT. OF COL. EL. XX'-X"	← BOTTOM OF COLUMN ELEVATION
TOP OF COL. EL. XX'-X"	← TOP OF COLUMN ELEVATION
TOT. COL. HEIGHT XX'-X"	← COLUMN LENGTH
C-1	← COLUMN MARK NUMBER
⬡	← DESIGN

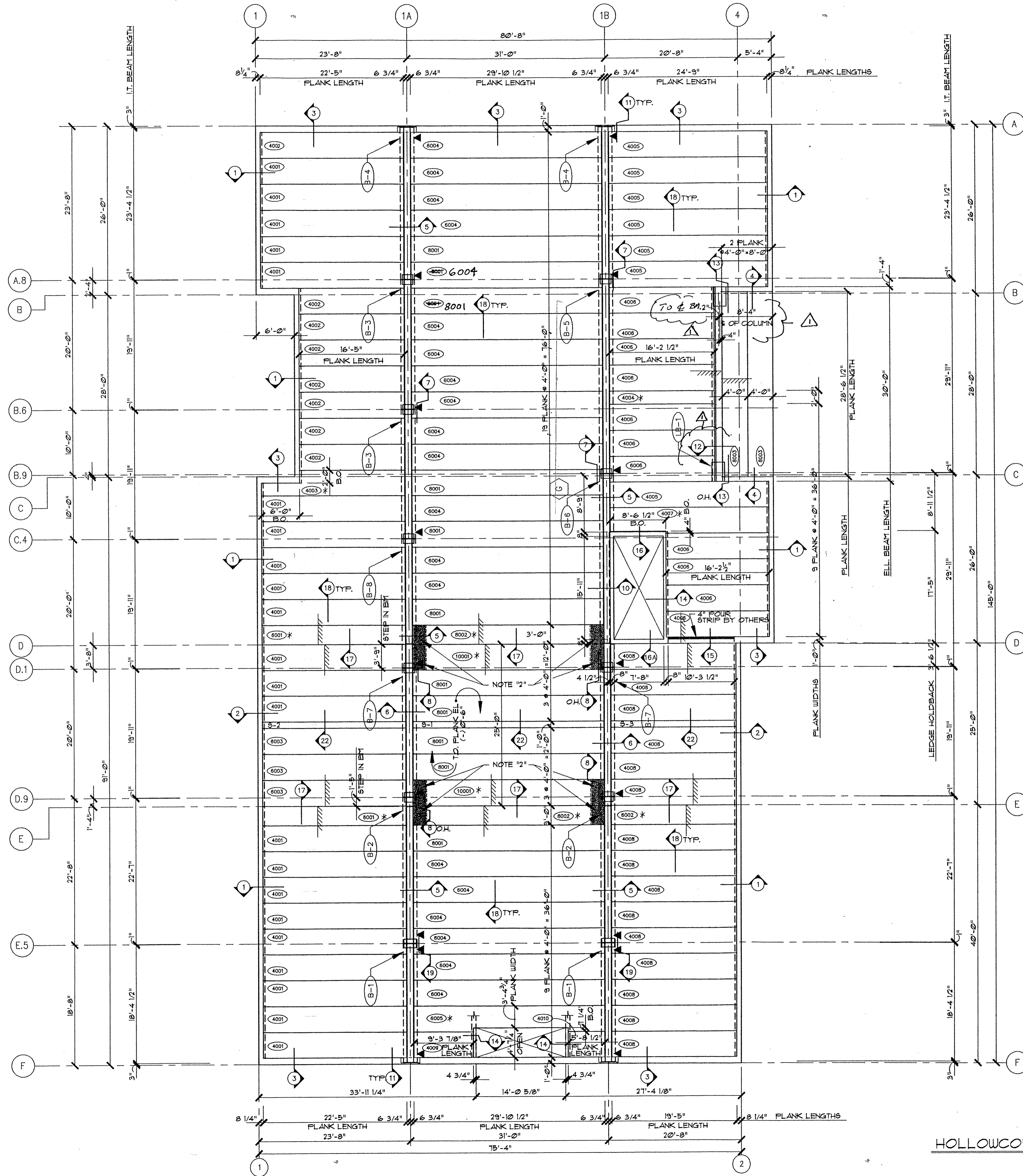
L-1 FRAMING PLAN / EMBED LAYOUT



5026 South 43rd Avenue
P.O. Box 18150
Phoenix, Arizona 85005
(602) 237-3875

CORESLAB STRUCTURES (AZ) INC.

Architect:	Engineer:	Customer:	Project Leader:	Drawn:	Date:	Checked:	Date:	Ext. No.:	Revision:	By:	Date:
CARL E. NELSON & ASSOC.	PAUL KOEHLER	CARDINAL DEVELOPMENT	DB	GM	2/10/97	JPK	2/12/97	354			
FOUNDATION PLAN											
ANCHOR BOLT LAYOUT											
Structure: COURTHOUSE PLAZA COMPLEX											
Location: SEDONA, AZ											
Sheet Number: PC-2											
Job Number: 1008											



HOLLOWCORE-LAYOUT

REVISION
 MAR 17 1997
 VOID ALL COPIES
COUED FOR TREFECTION
 FEB 12 1997

NOTES:

1. FINISH FLOOR ELEVATION (+)10'-10 1/2" = (4385.7" ACTUAL)
2. GROUT SOLID PLANK VOIDS EACH END FOR A DEPTH OF 5'-0"
3. ▲ INDICATES FIXED END OF I.T. BM
4. ALL 12 IT 26 ARE DESIGN (E), U.N.O.
5. ALL 12 IT 22 ARE DESIGN (F)
6. ALL 12 LB 26 ARE DESIGN (H)
7. (6XXX) FIRST DIGIT INDICATES NUMBER OF STRANDS

5026 South 43rd Avenue
 P.O. Box 18150
 Phoenix, Arizona 85005
 (602) 237-3875

CORES LAB
STRUCTURES
 (ARIZ) INC.

Ext. No.	Revision	By	Date
1	1	DB	3/17/97

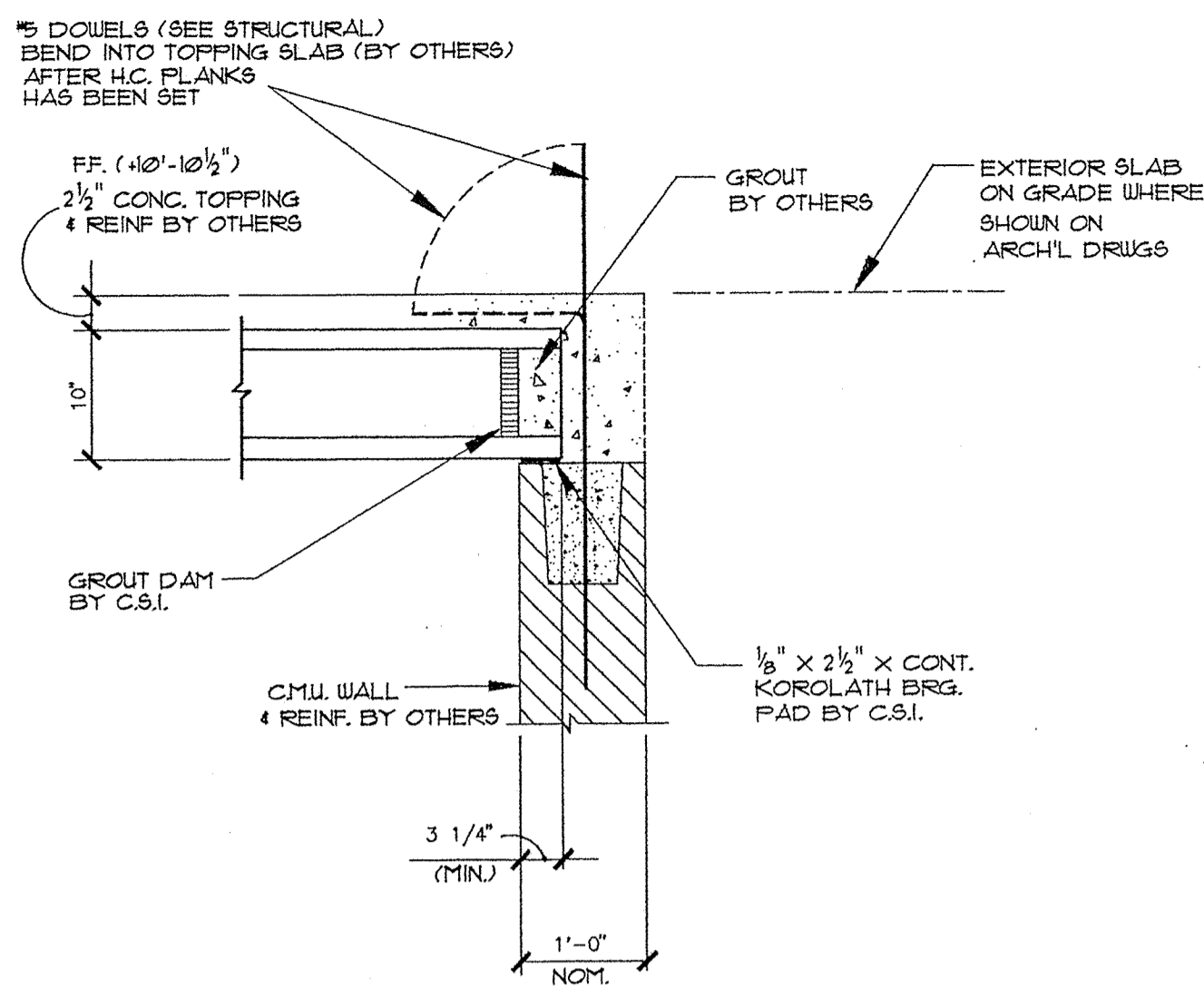
Architect: CARL E. NELSON & ASSOC.
 Engineer: PAUL KOEHLER
 Customer: CARDINAL DEVELOPMENT
 Project Leader: DB
 Drawn: GM
 Date: 2/10/97

Ext. No. 1
 Revision 1
 By DB
 Date 3/17/97

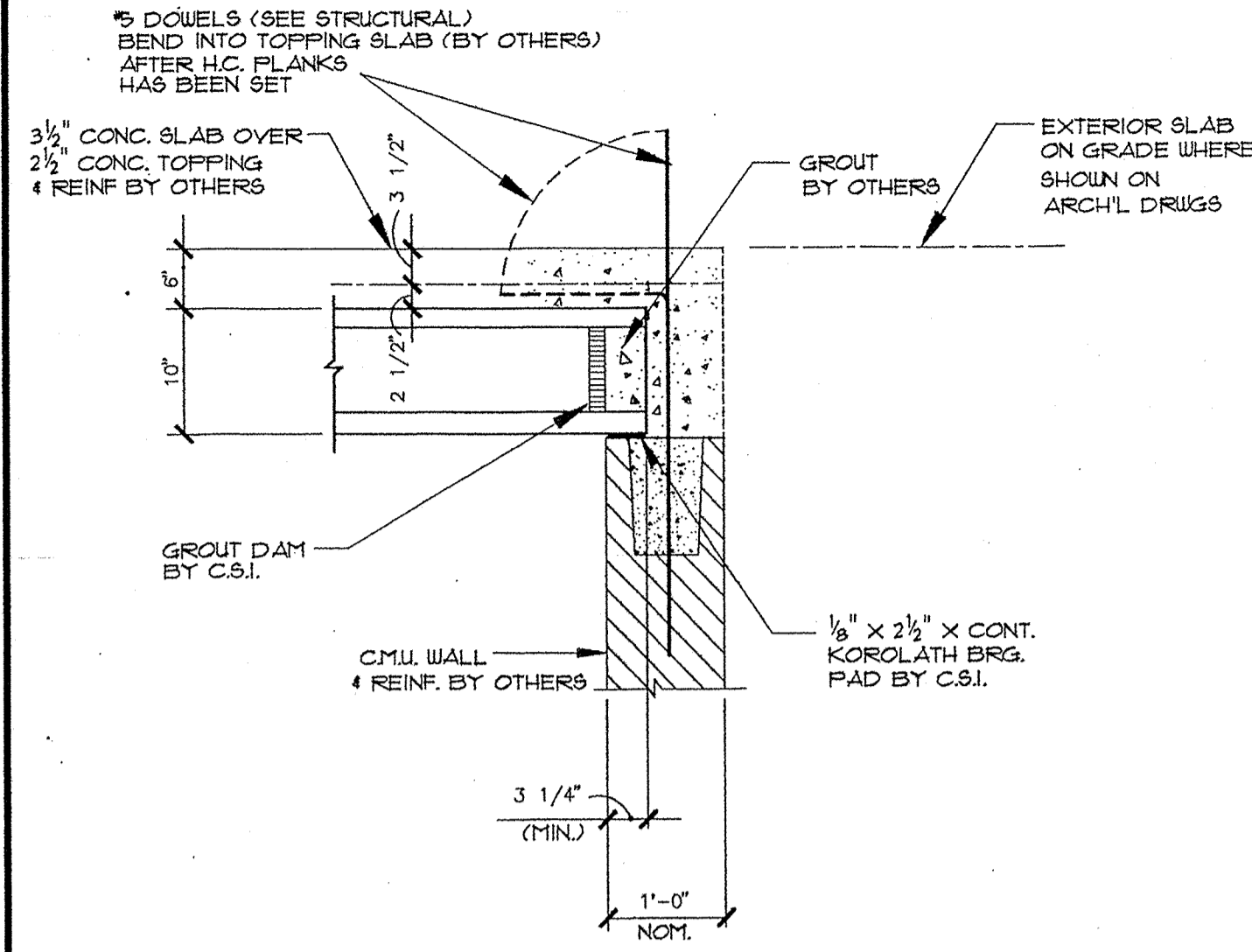
HOLLOWCORE PLANK LAYOUT
LEVEL ONE
 Structure: COURTHOUSE PLAZA COMPLEX
 Location: SEDONA, AZ

Sheet Number
PC-3
 Job Number
7008

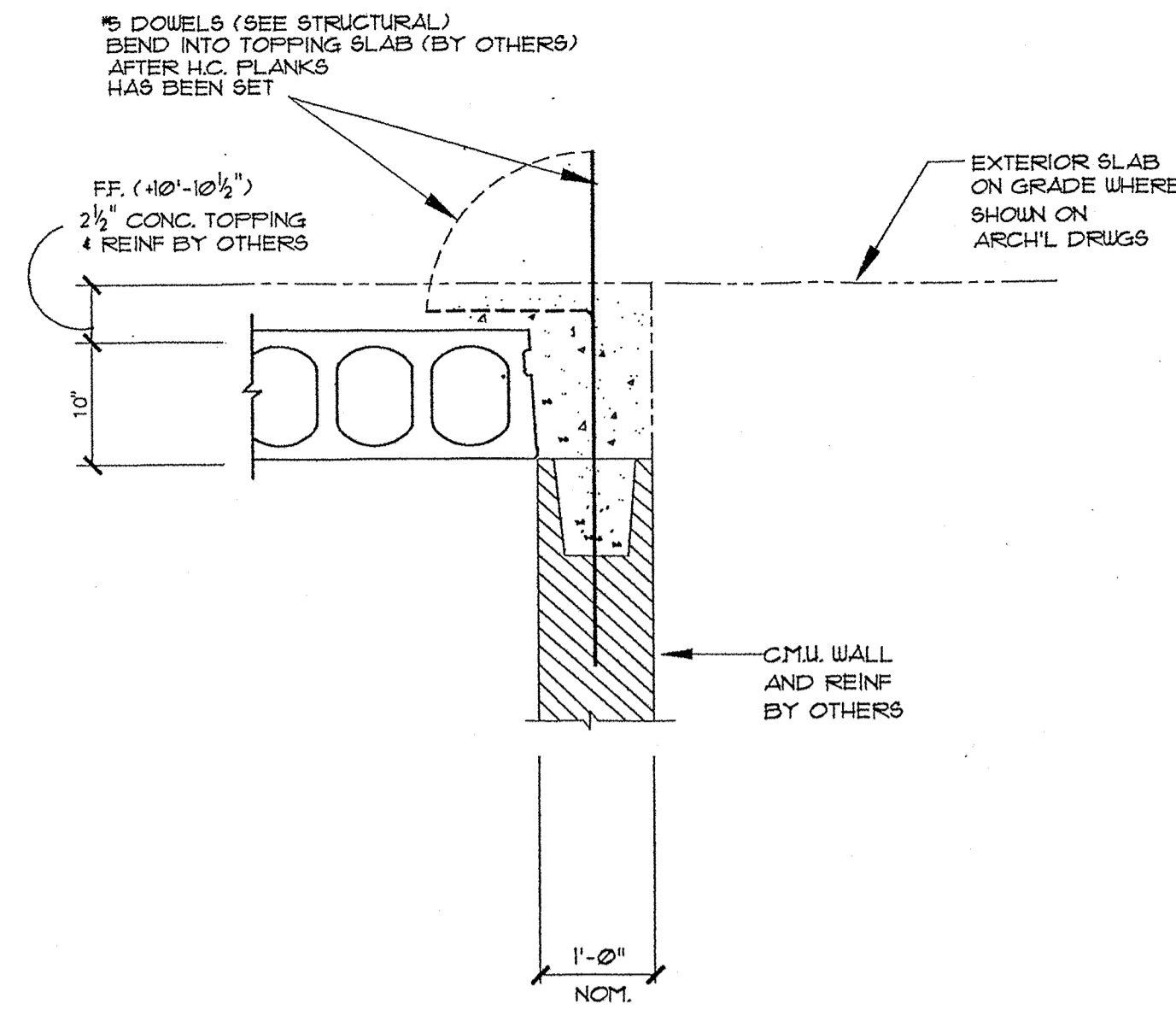
NOTE: ALL ITEMS NOT INDICATED AS BY C.S.I. ARE BY OTHERS.



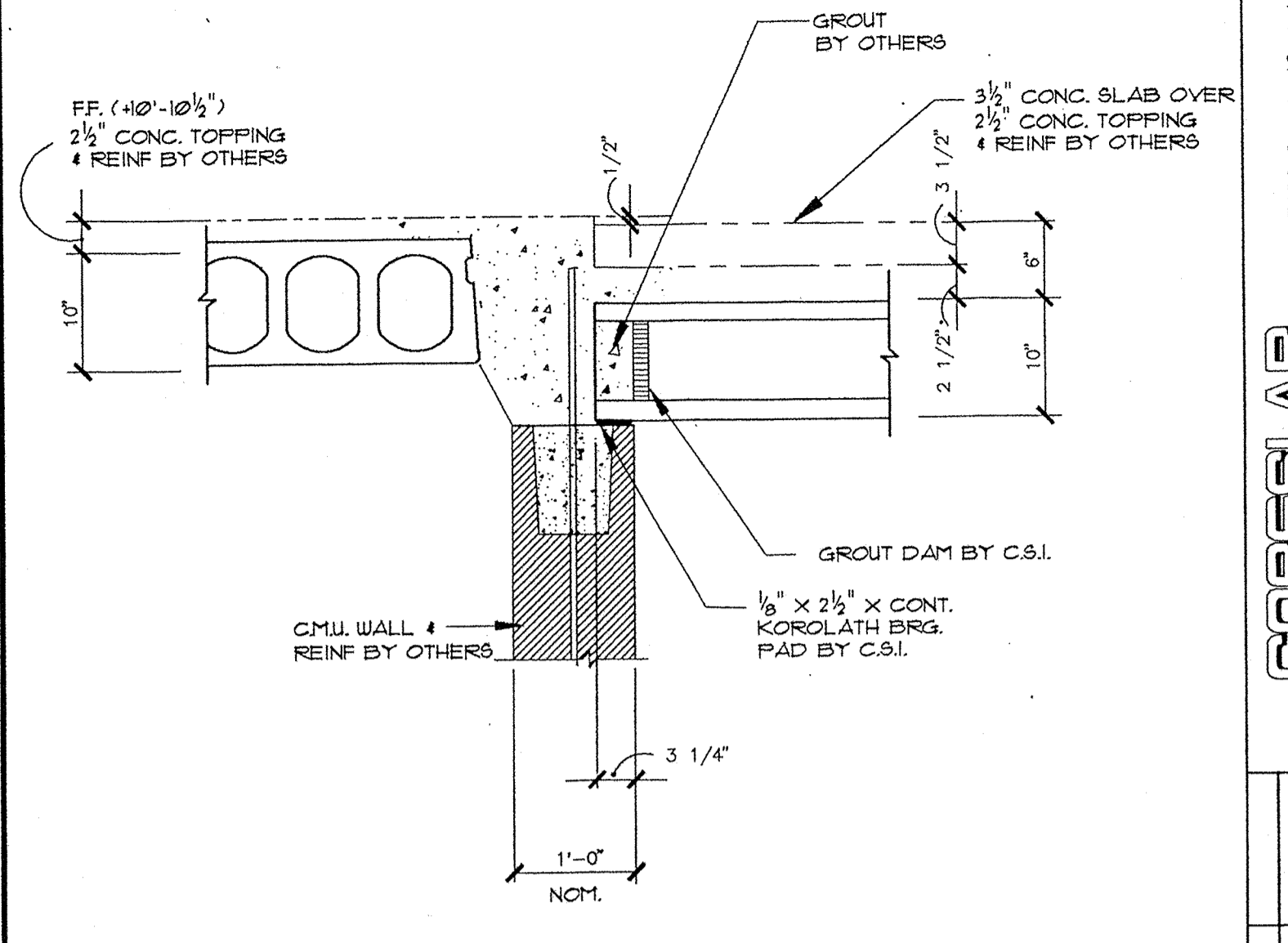
FLANK BRG. @ CMU. SECTION 1



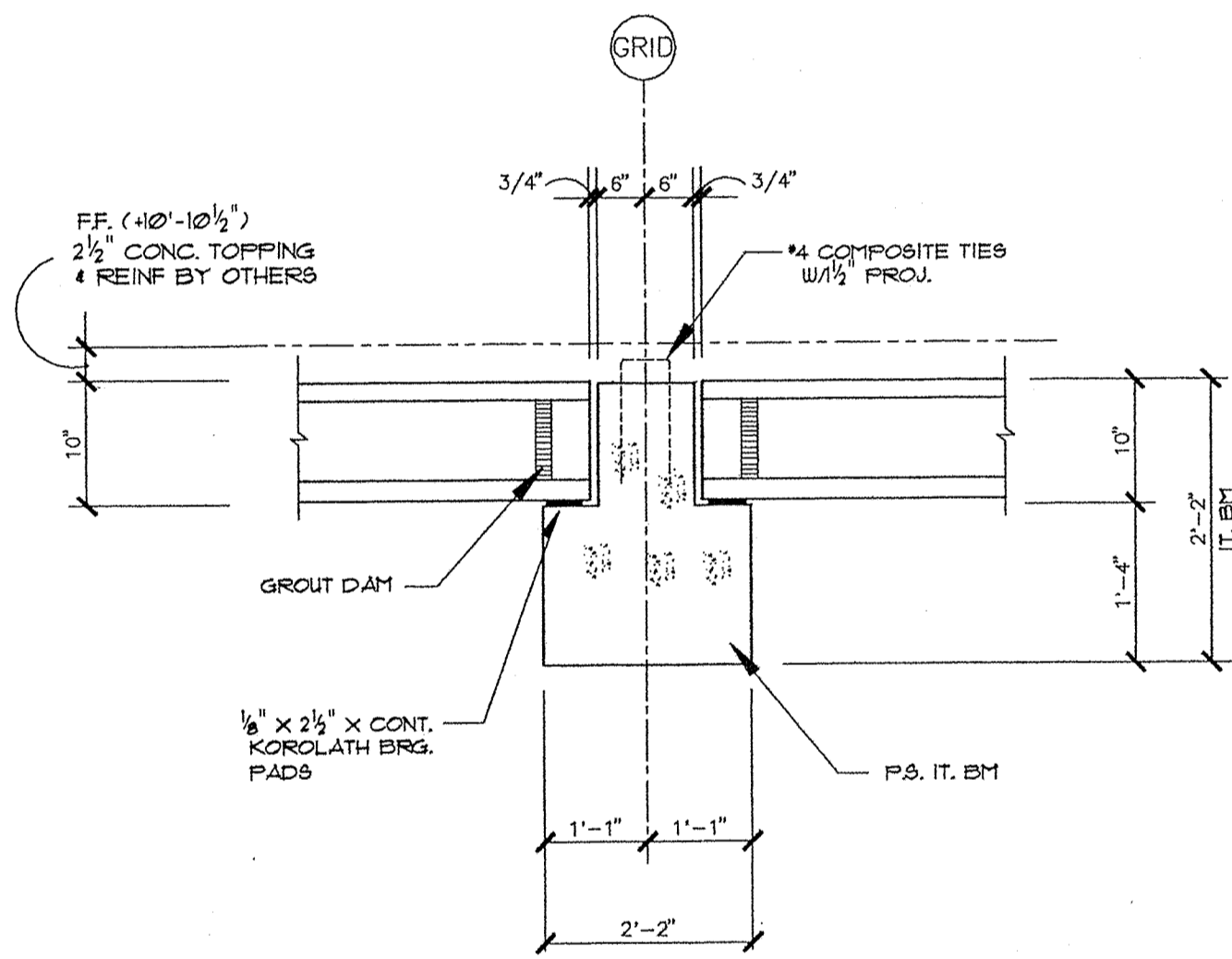
FLANK BRG. @ CMU PLAZA SECTION 2



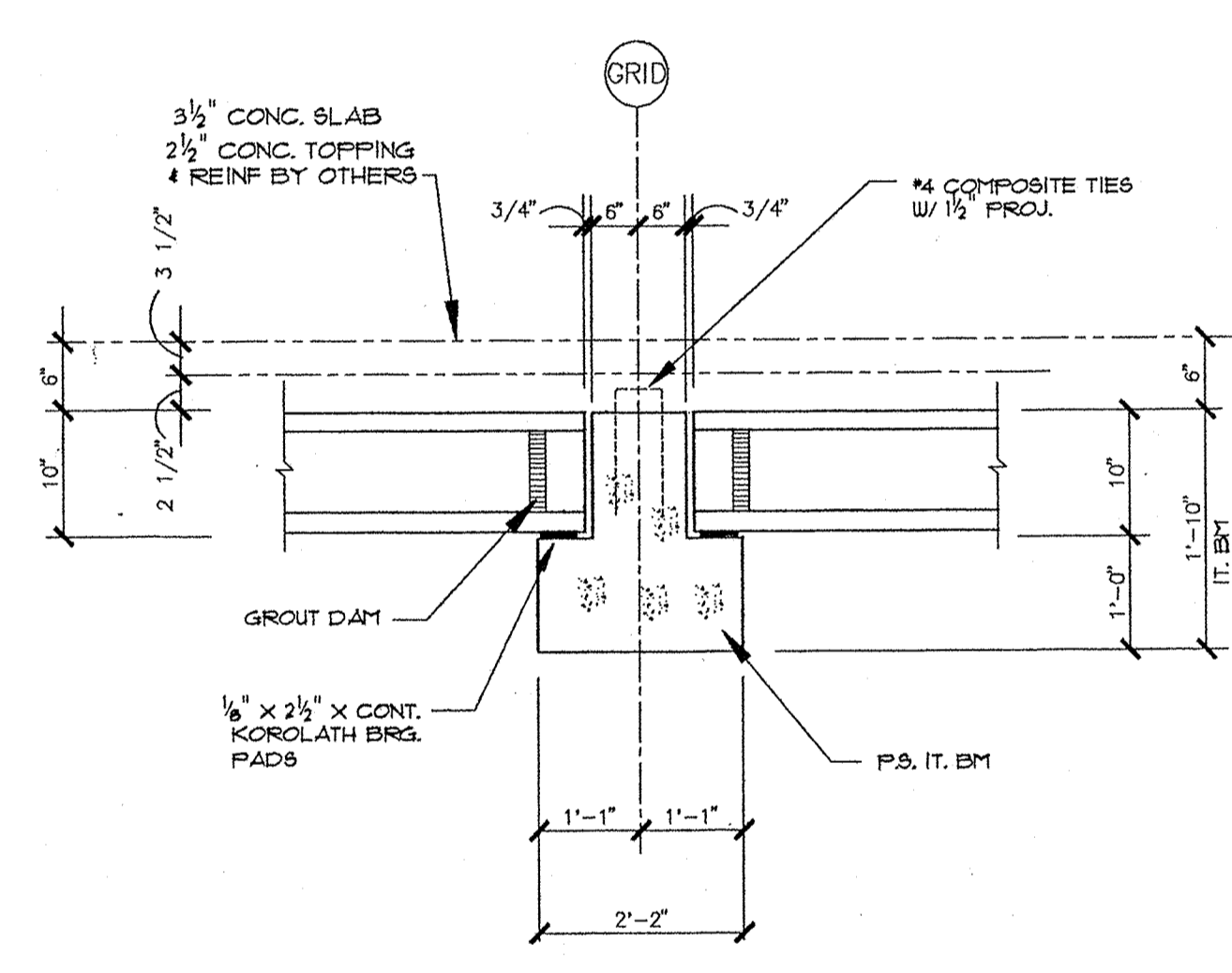
FLANK ADJAC. TO CMU SECTION 3



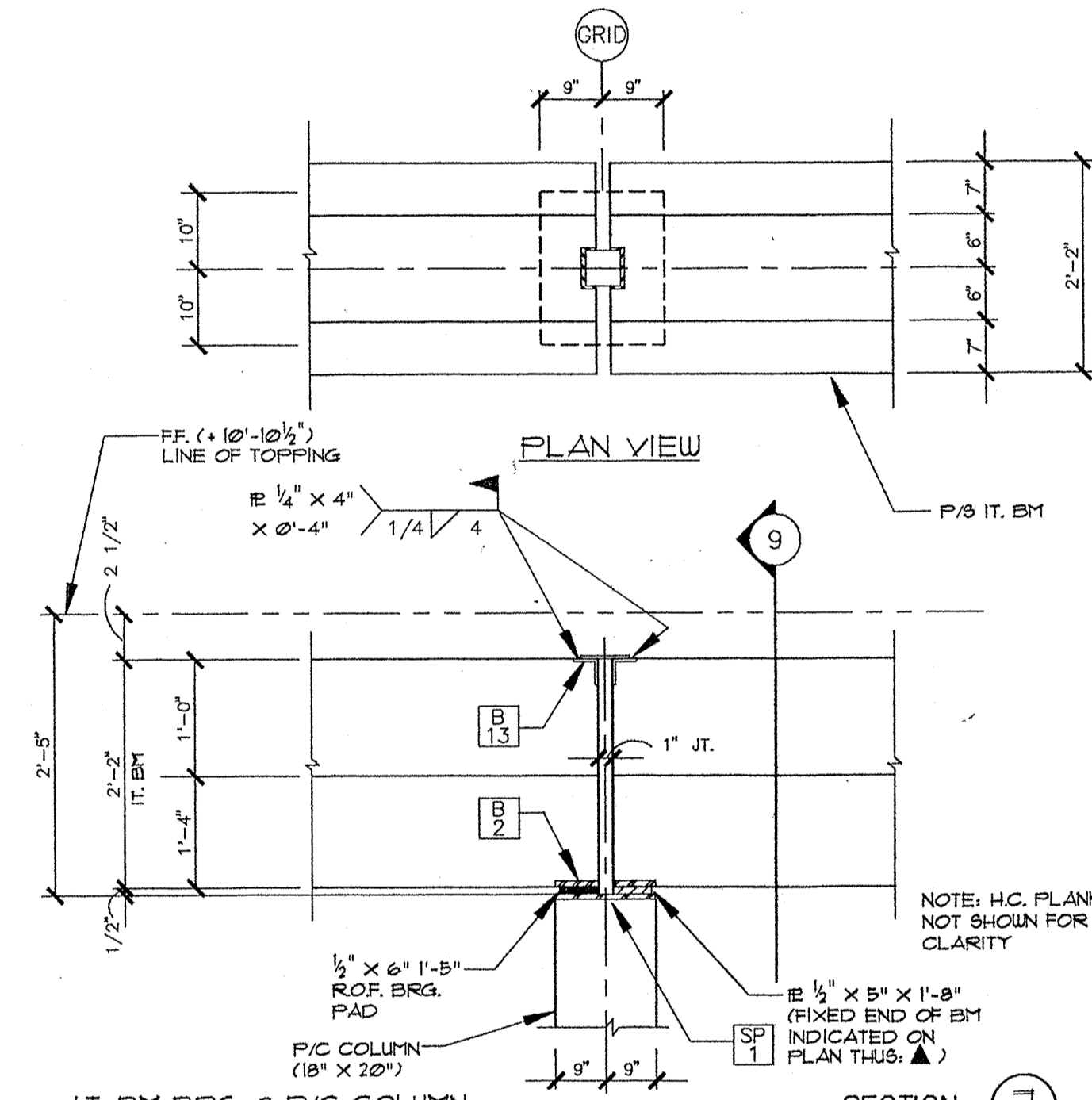
H.C. FLANK AT CMU WALL AT BALCONY SECTION 4



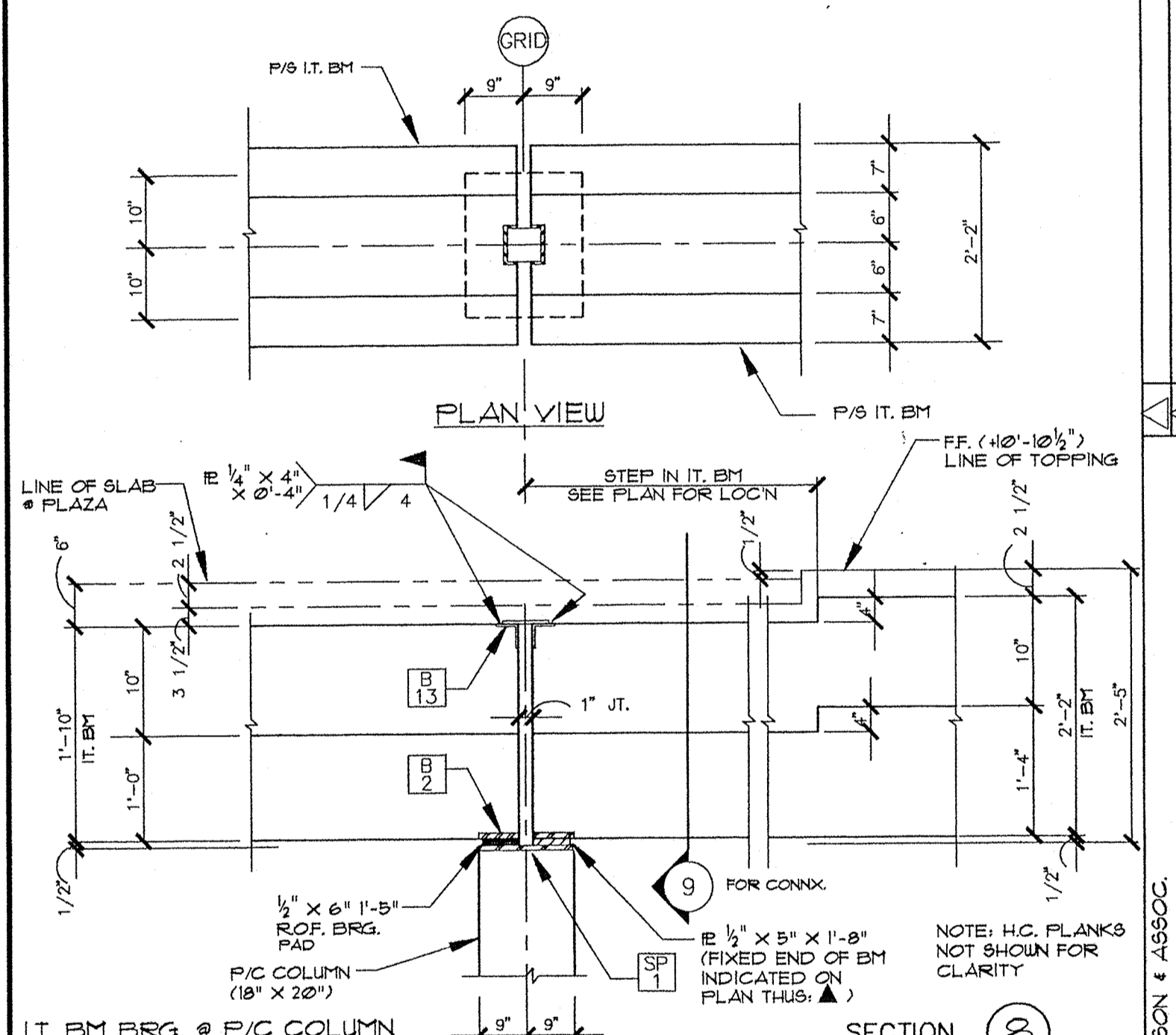
H.C. FLANK AT P/S IT. BM. SECTION 5



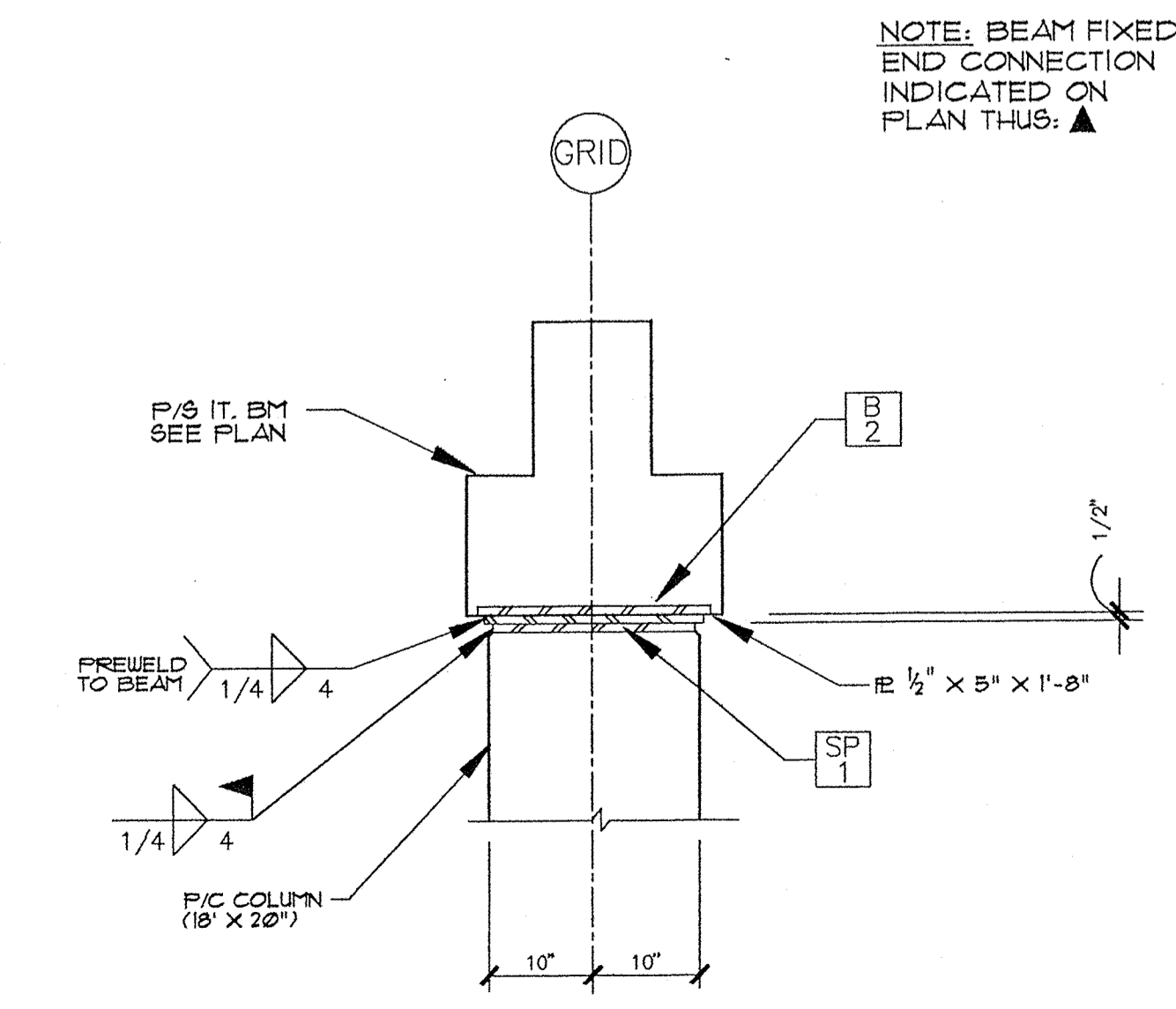
H.C. FLANK AT P/S IT. BM. @ PLAZA SECTION 6



I.T. BM BRG. @ P/C COLUMN SECTION 7

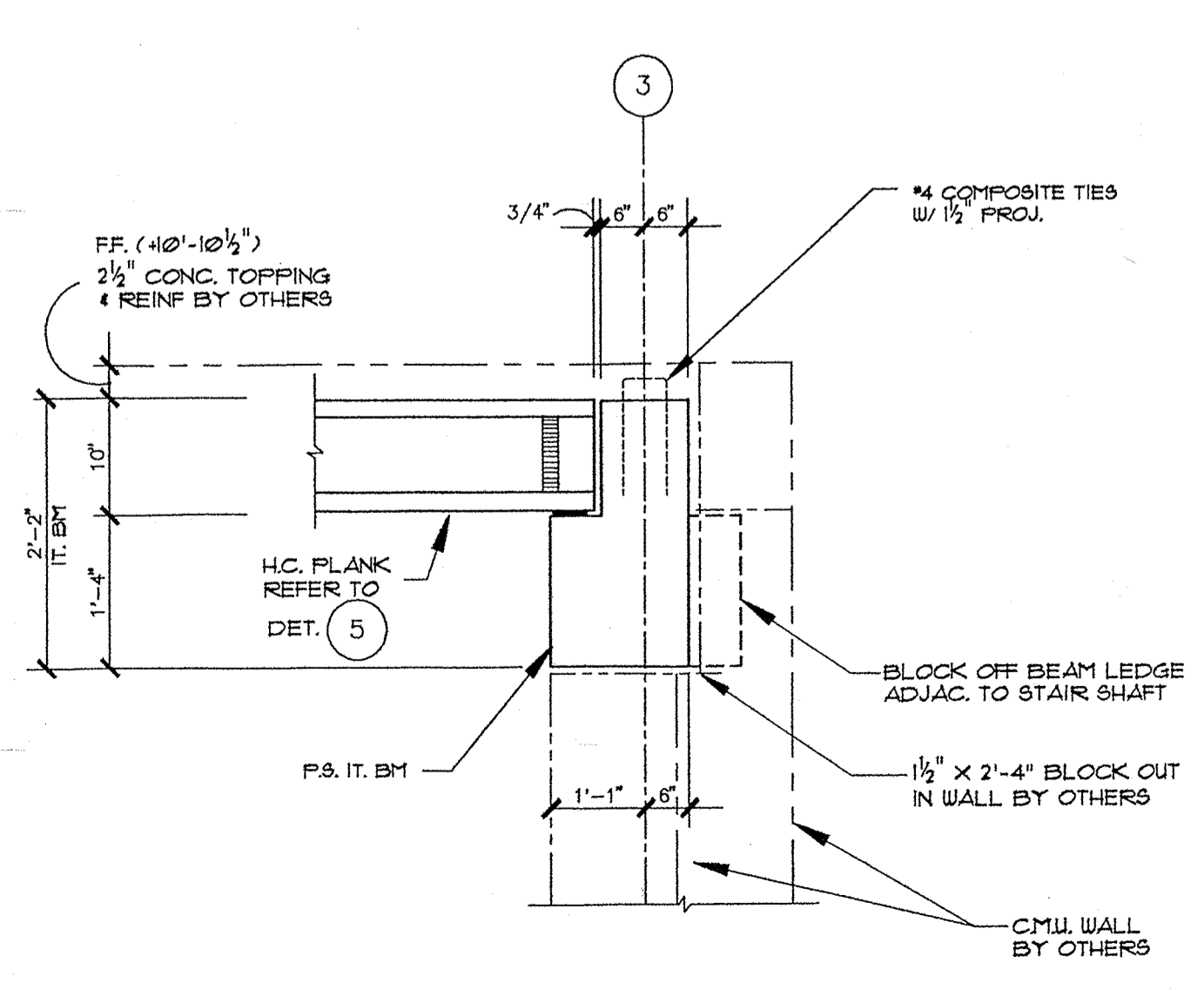


I.T. BM BRG. @ P/C COLUMN AT PLAZA SECTION 8

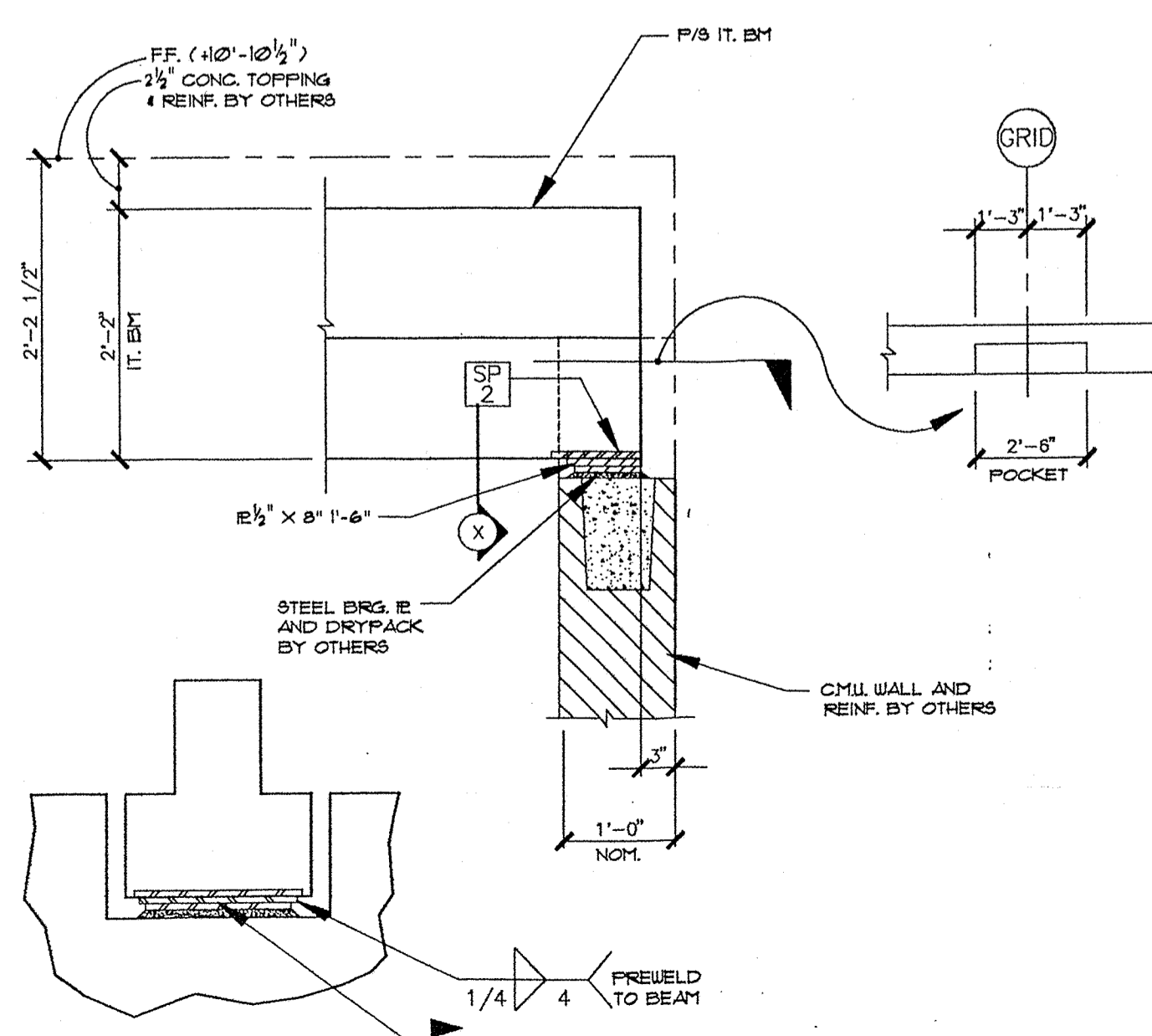


I.T. BM TO P/C COL. CONNX SECTION 9

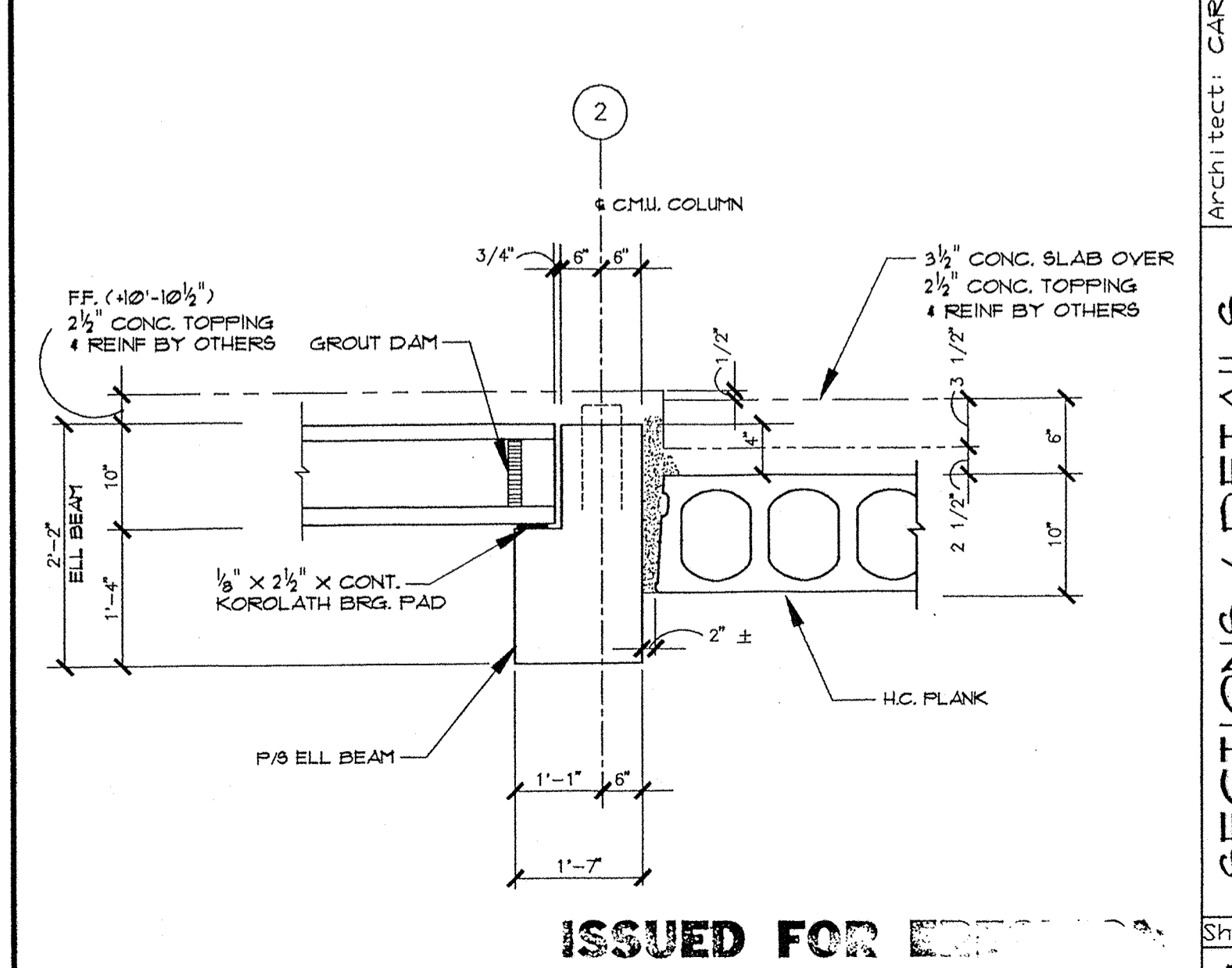
NOTE: BEAM FIXED END CONNECTION INDICATED ON PLAN THUS: ▲



I.T. BM @ STAIR SHAFT SECTION 10



I.T. BM @ CMU WALL SECTION 11



H.C. FLANK / ELL BM @ BALCONY SECTION 12

Architect: CARL E. NELSON & ASSOC.
 Engineer: PAUL W. KOEHLER
 Customer: CARDINAL DEVELOPMENT
 Project Leader: DAVE BAIRD / 325
 Drawn: GH
 Date: 3/62

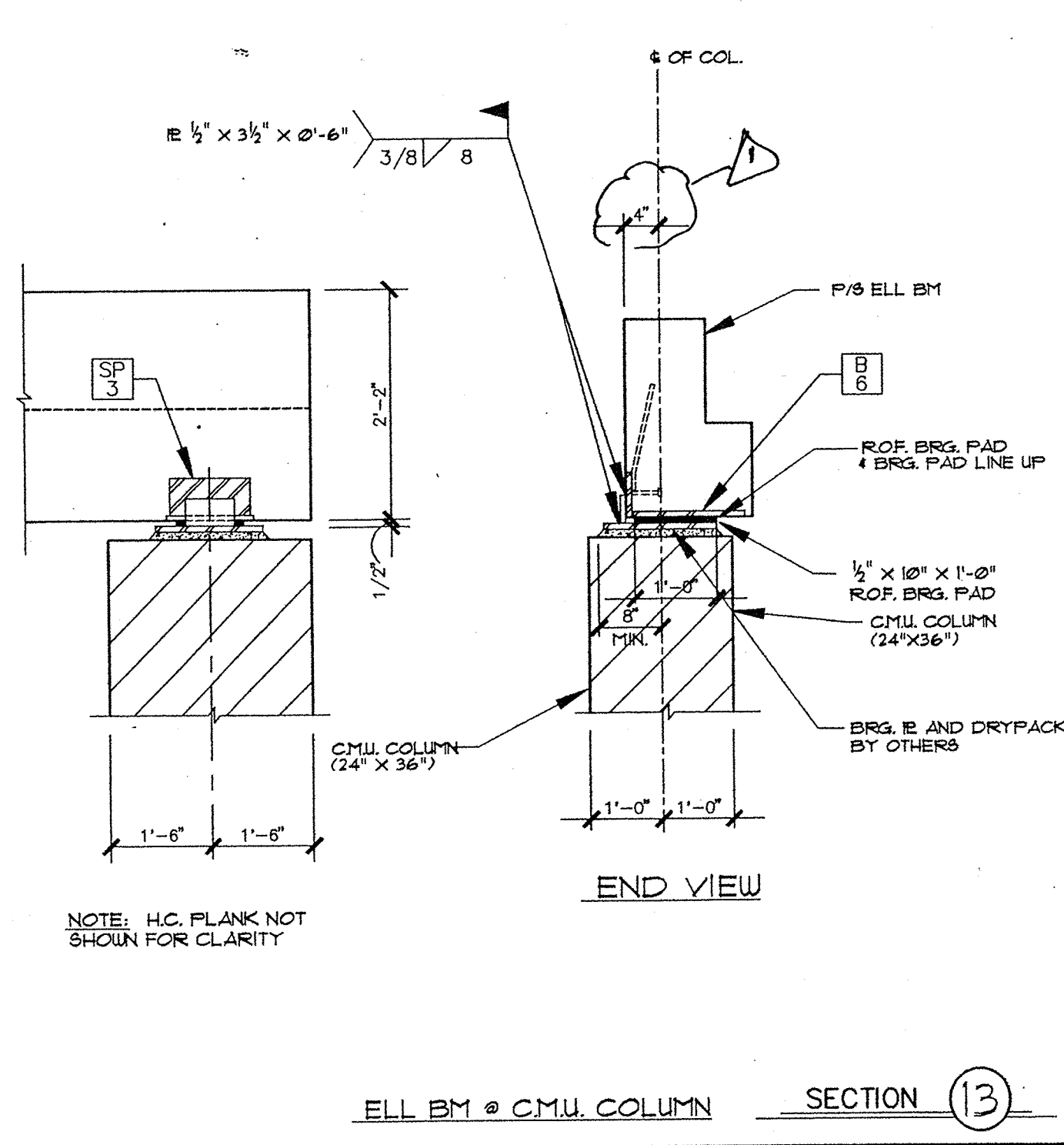
Structure: COURTHOUSE PLAZA COMPLEX
 Location: SADDONA, AZ.

SECTION 1 / DETAILS
 SHEET NUMBER: PC-4
 JOB NUMBER: 1008

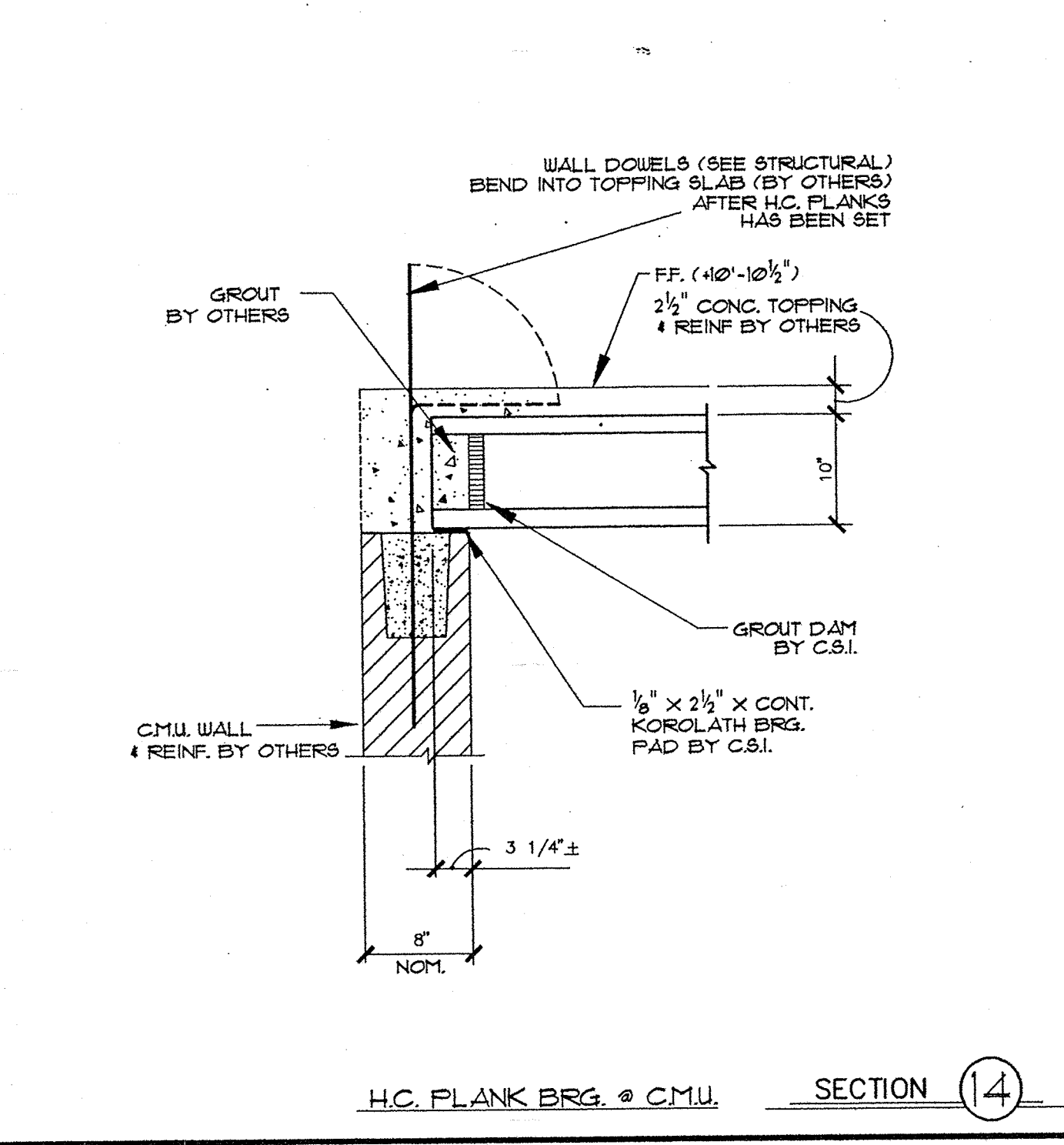
ISSUED FOR FEB 19 97

CORSLAB
 STRUCTURES
 (ARIZ) INC.

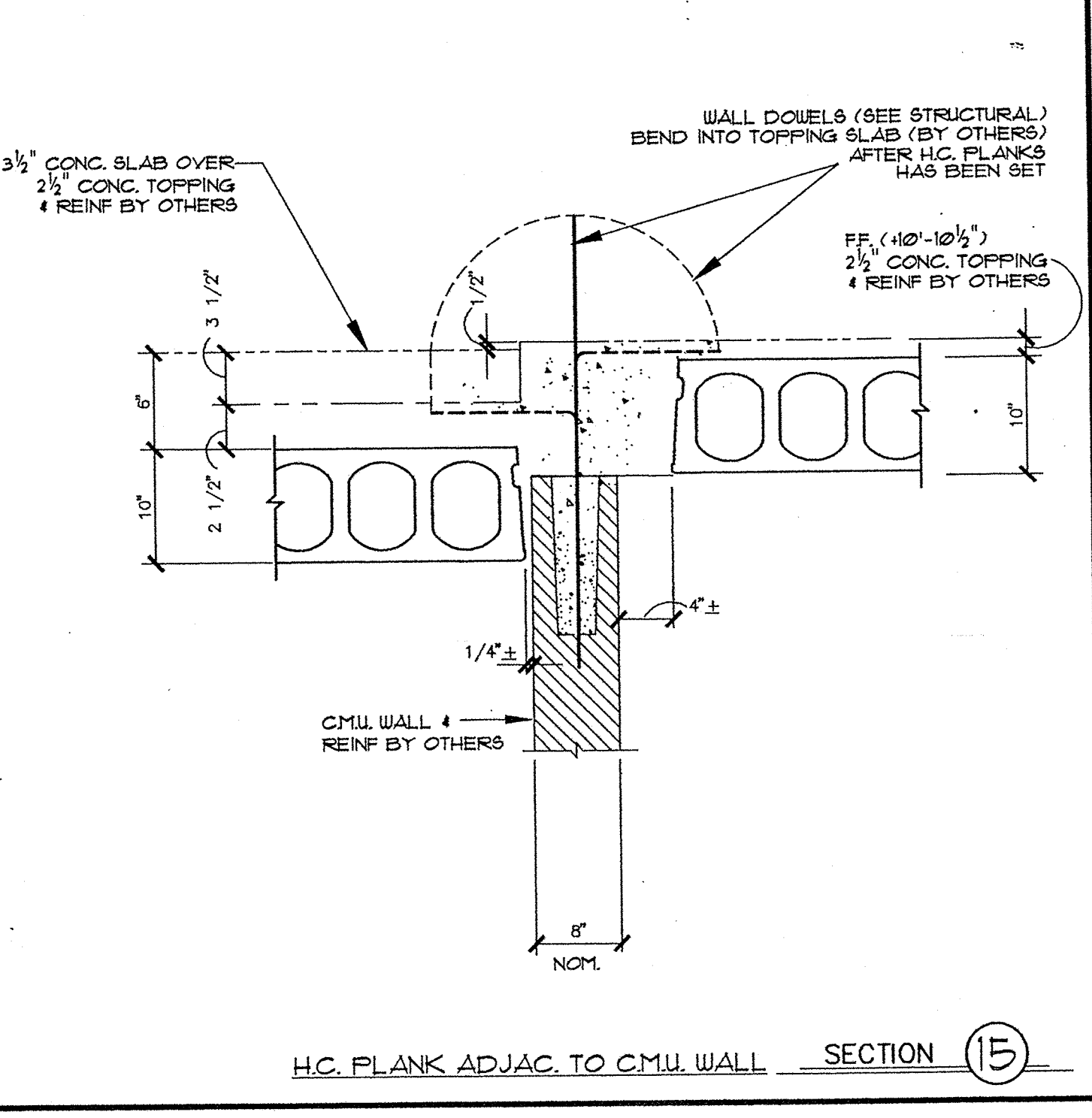
5026 South 43rd Avenue
 P.O. Box 18150
 Phoenix, Arizona 85005
 (602) 237-3075



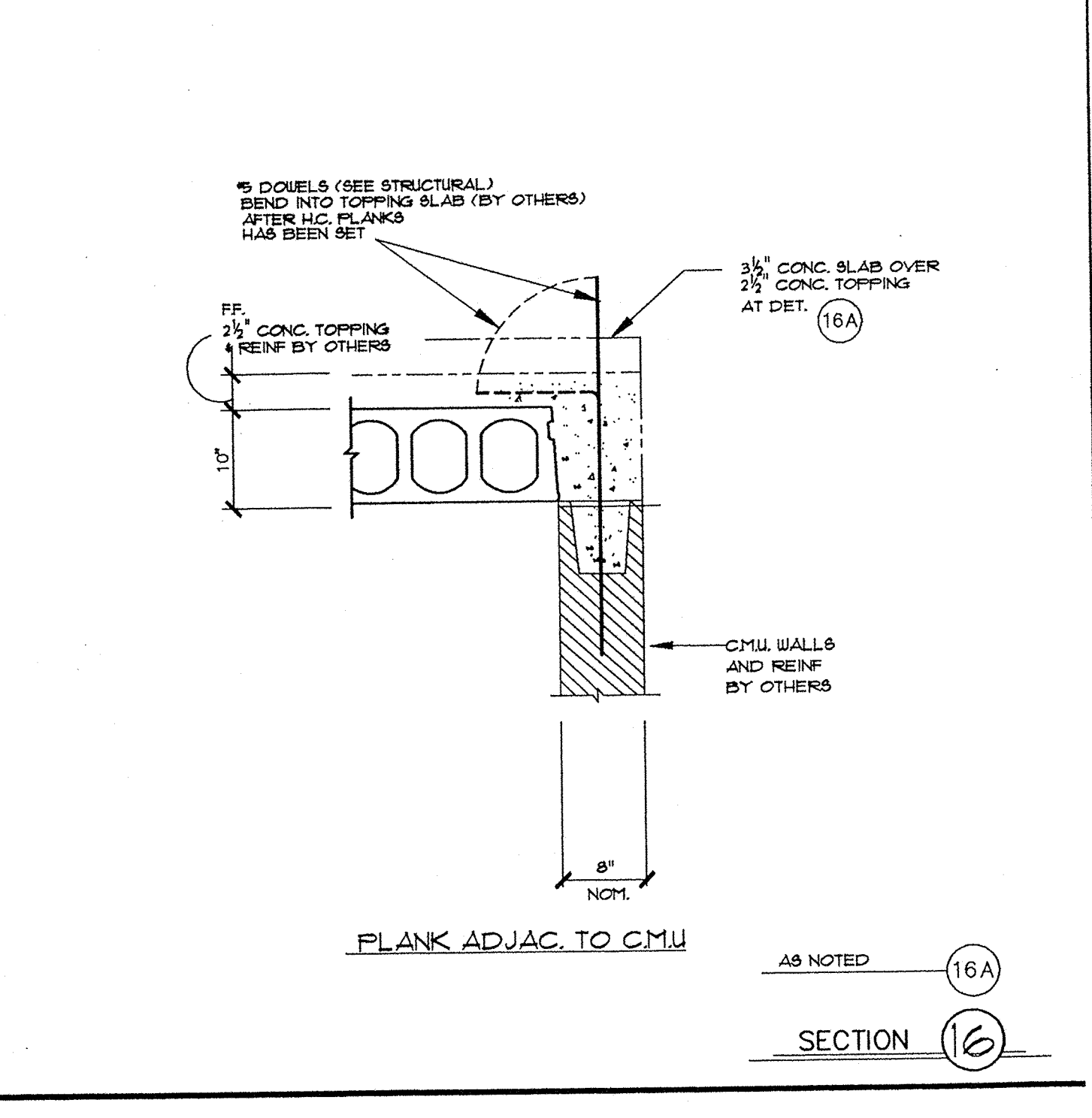
ELL. BM @ CMU COLUMN SECTION 13



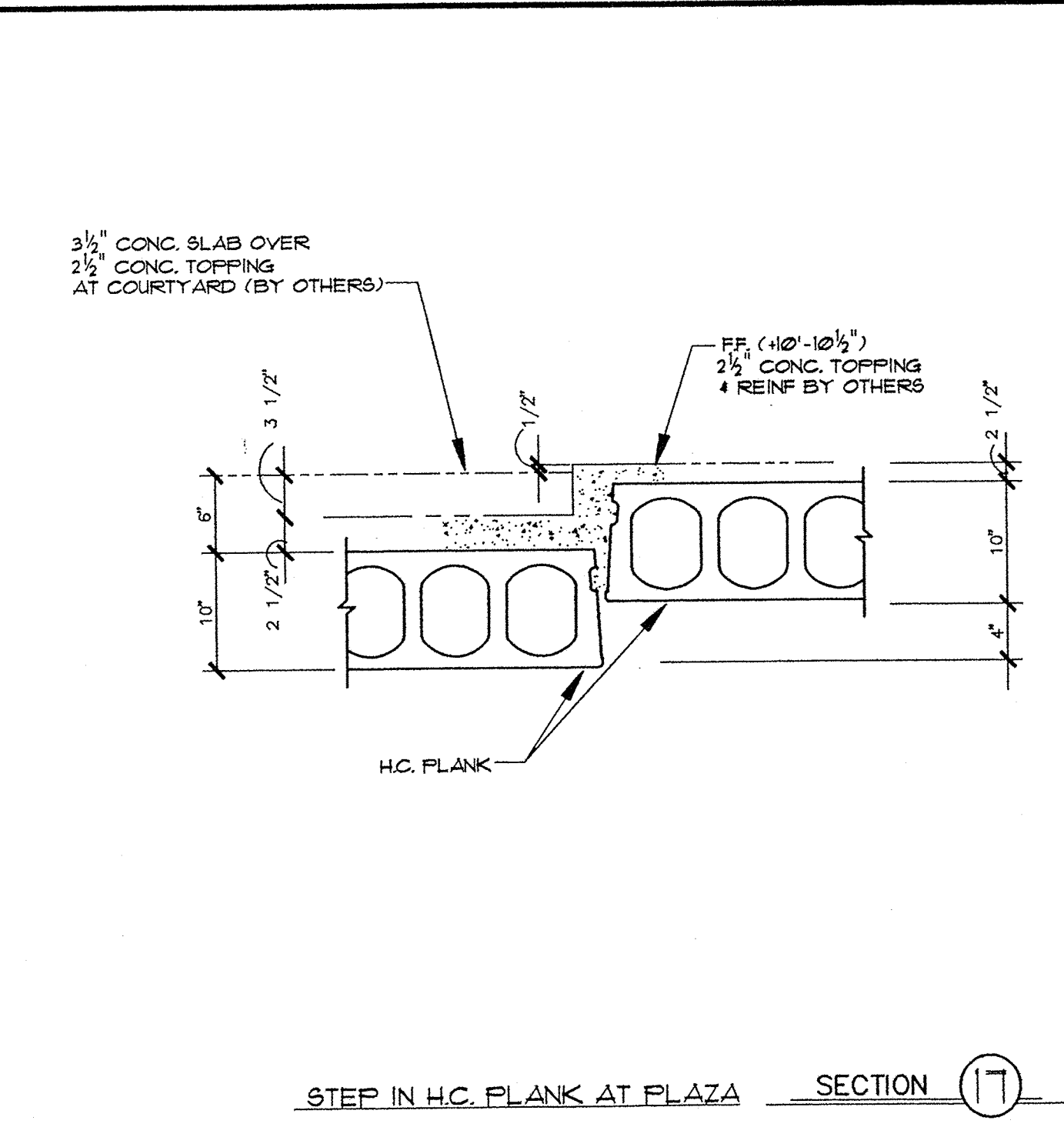
H.C. PLANK BRG. @ CMU SECTION 14



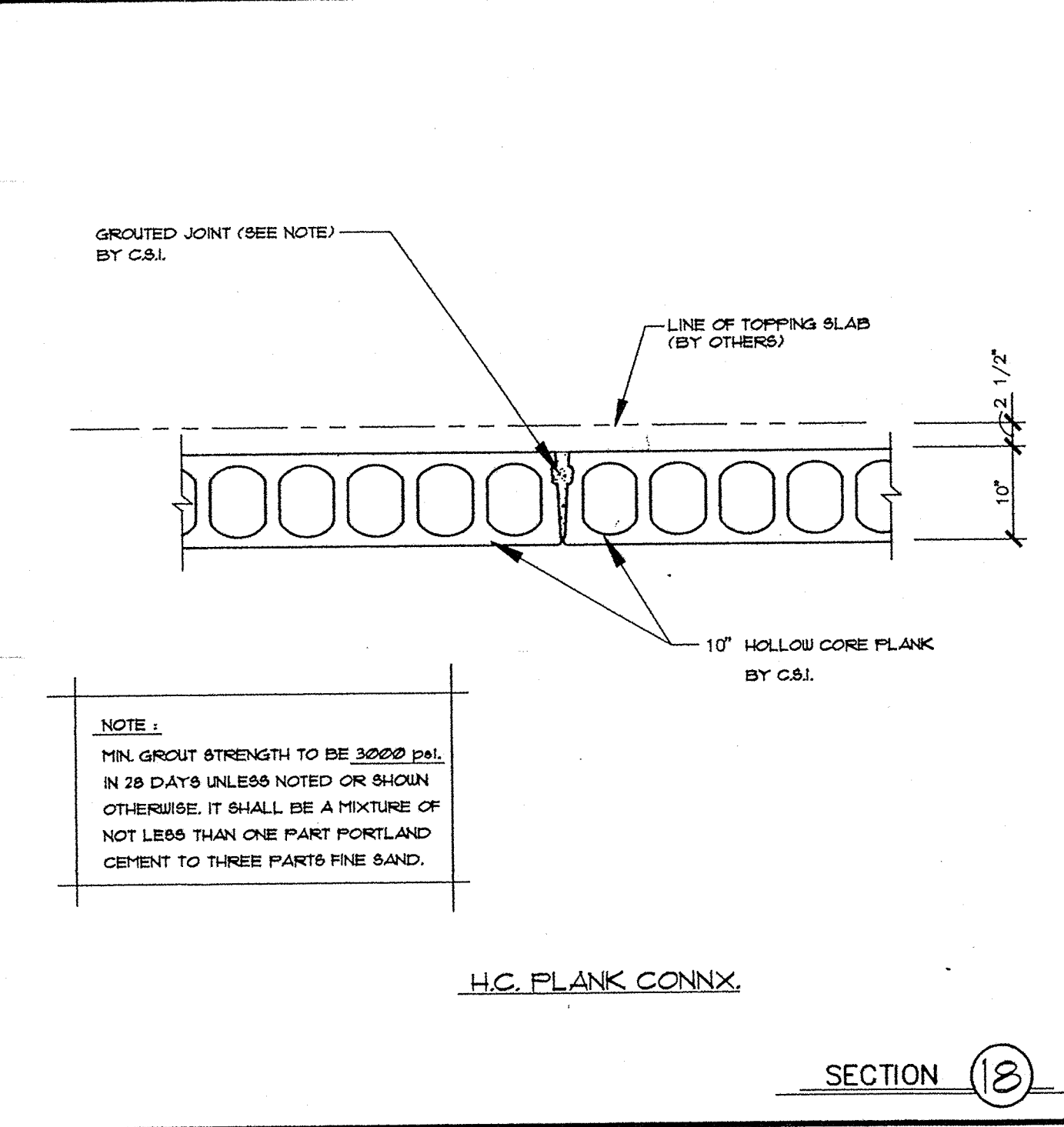
H.C. PLANK ADJAC. TO CMU WALL SECTION 15



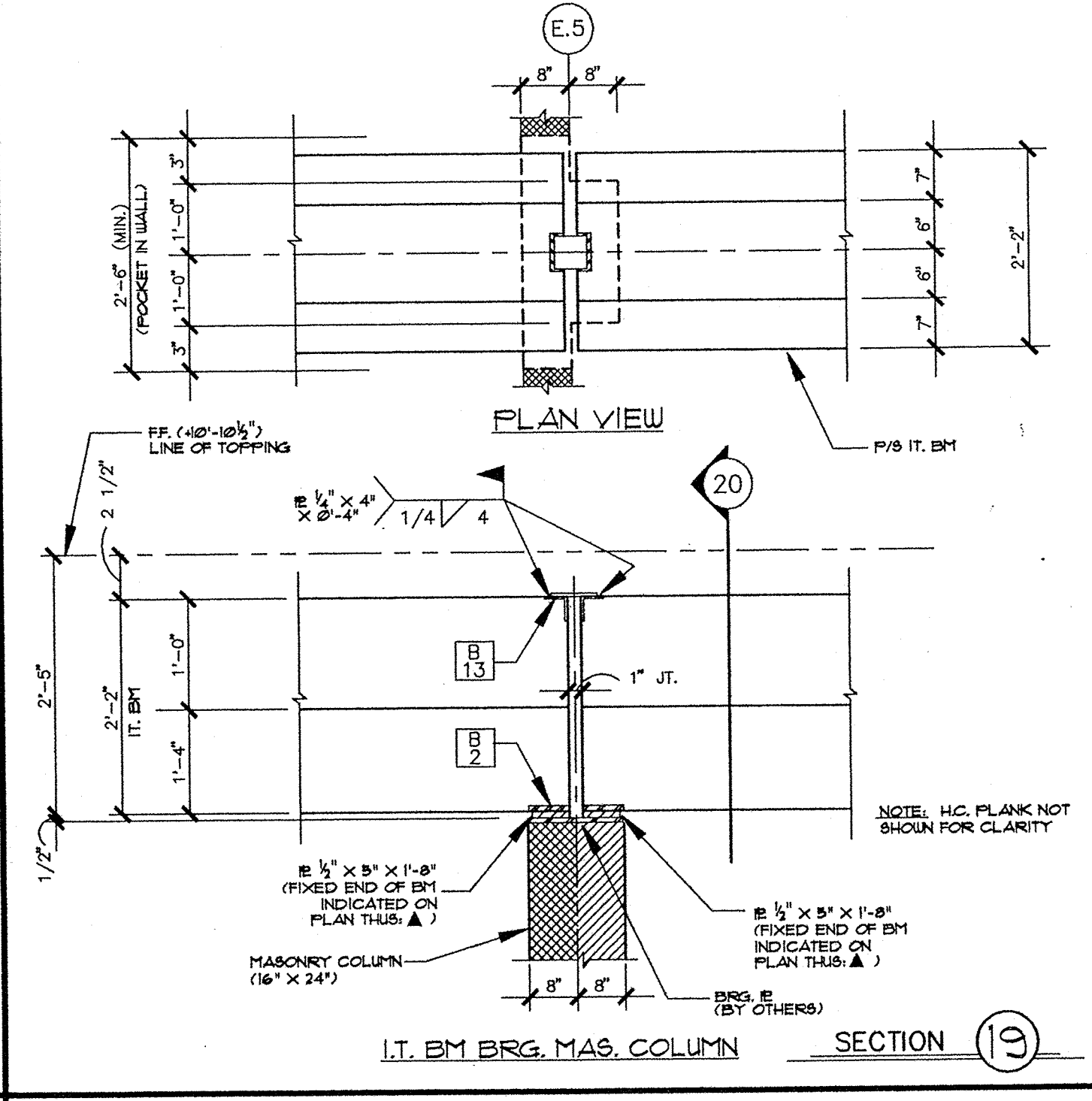
FLANK ADJAC. TO CMU SECTION 16



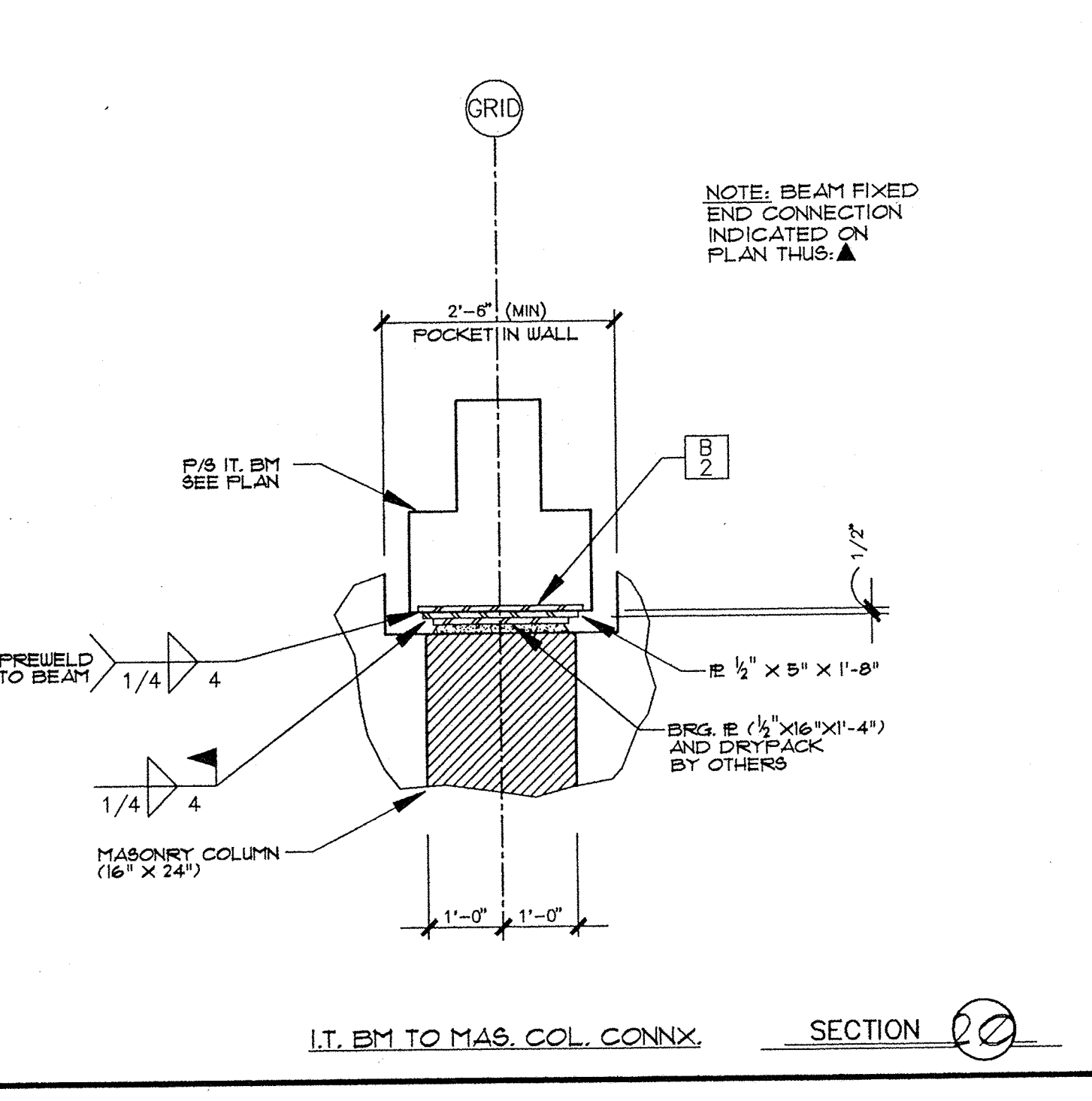
STEP IN H.C. PLANK AT PLAZA SECTION 17



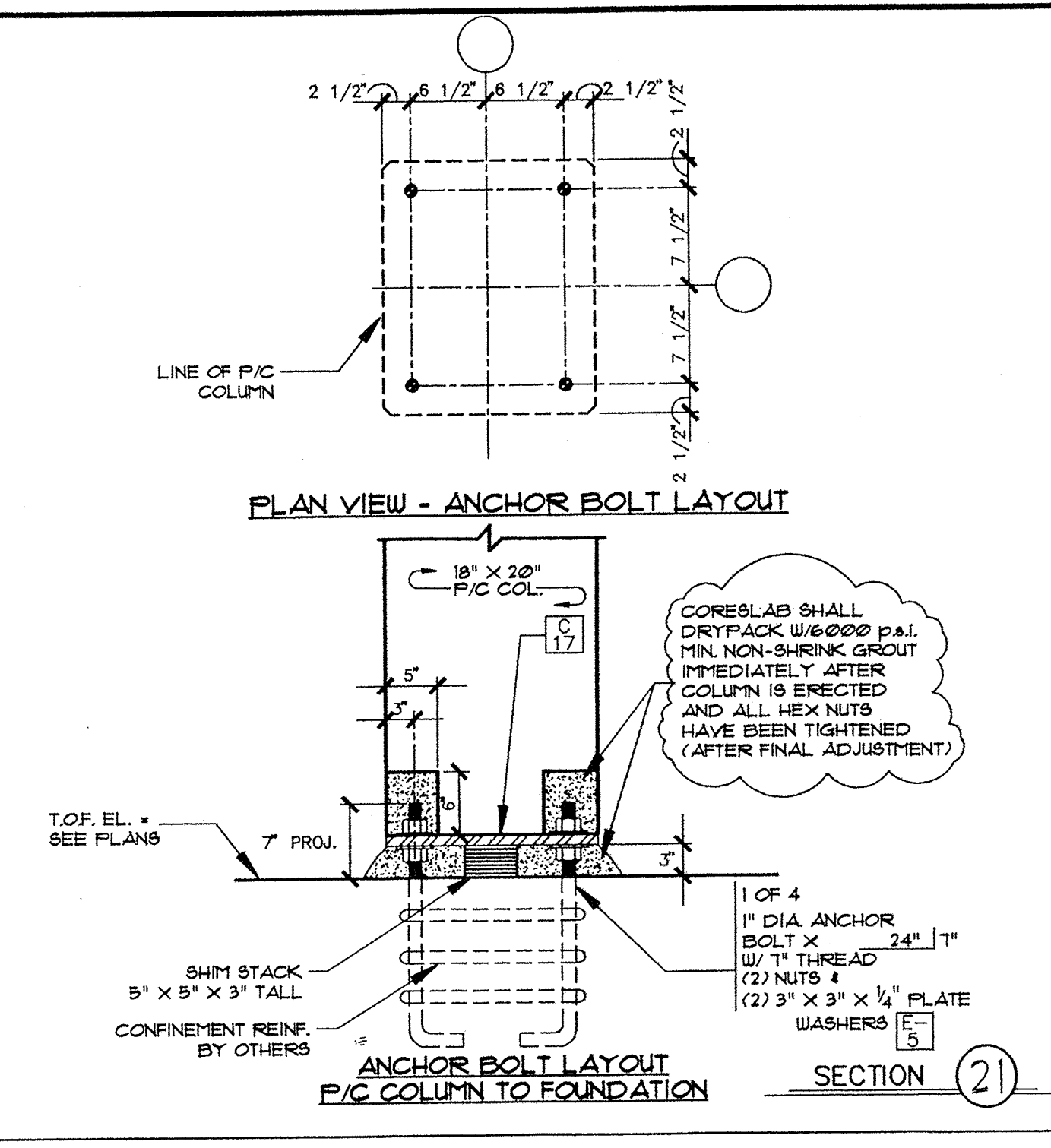
H.C. PLANK CONNX. SECTION 18



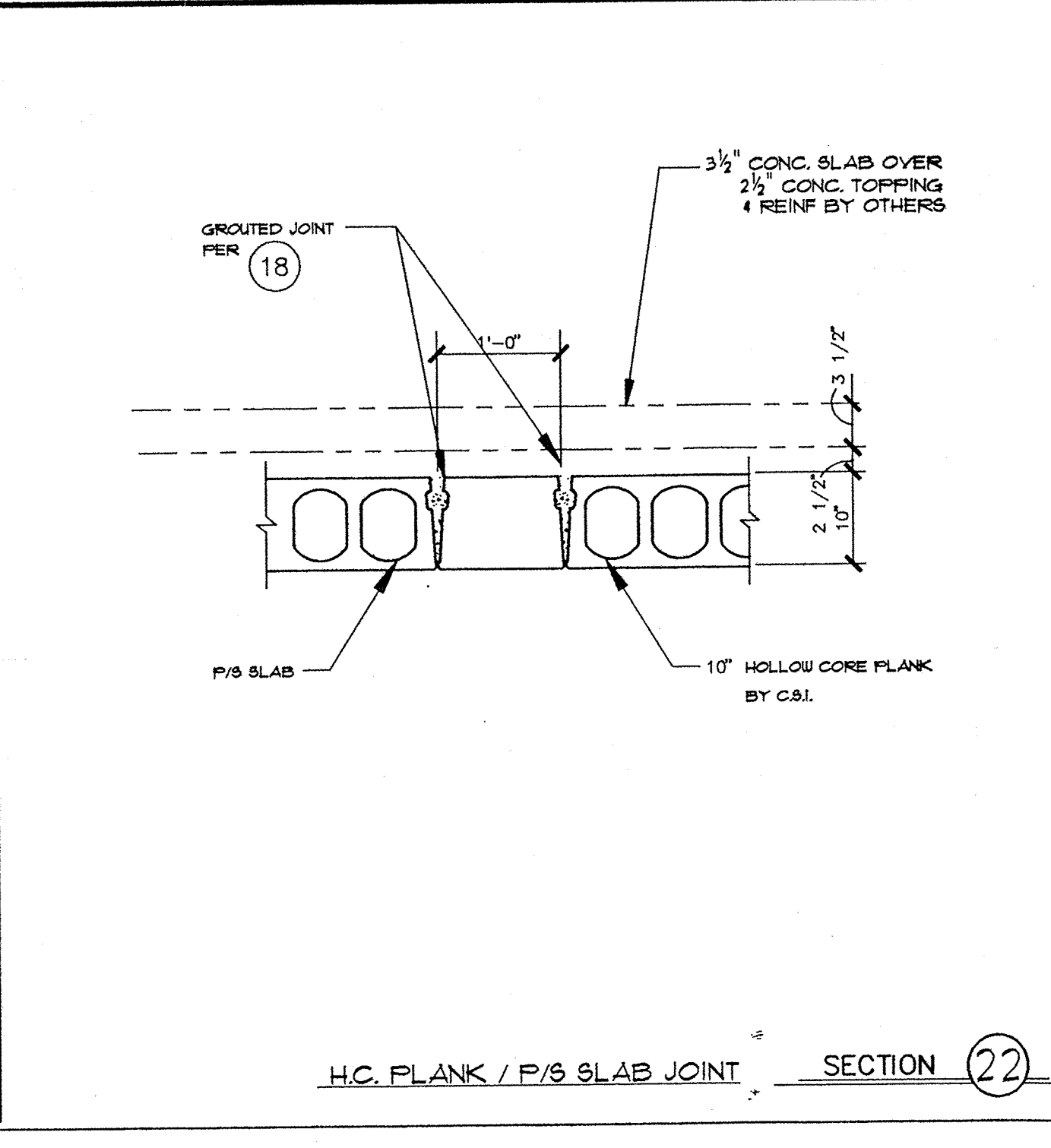
I.T. BM BRG. MAS. COLUMN SECTION 19



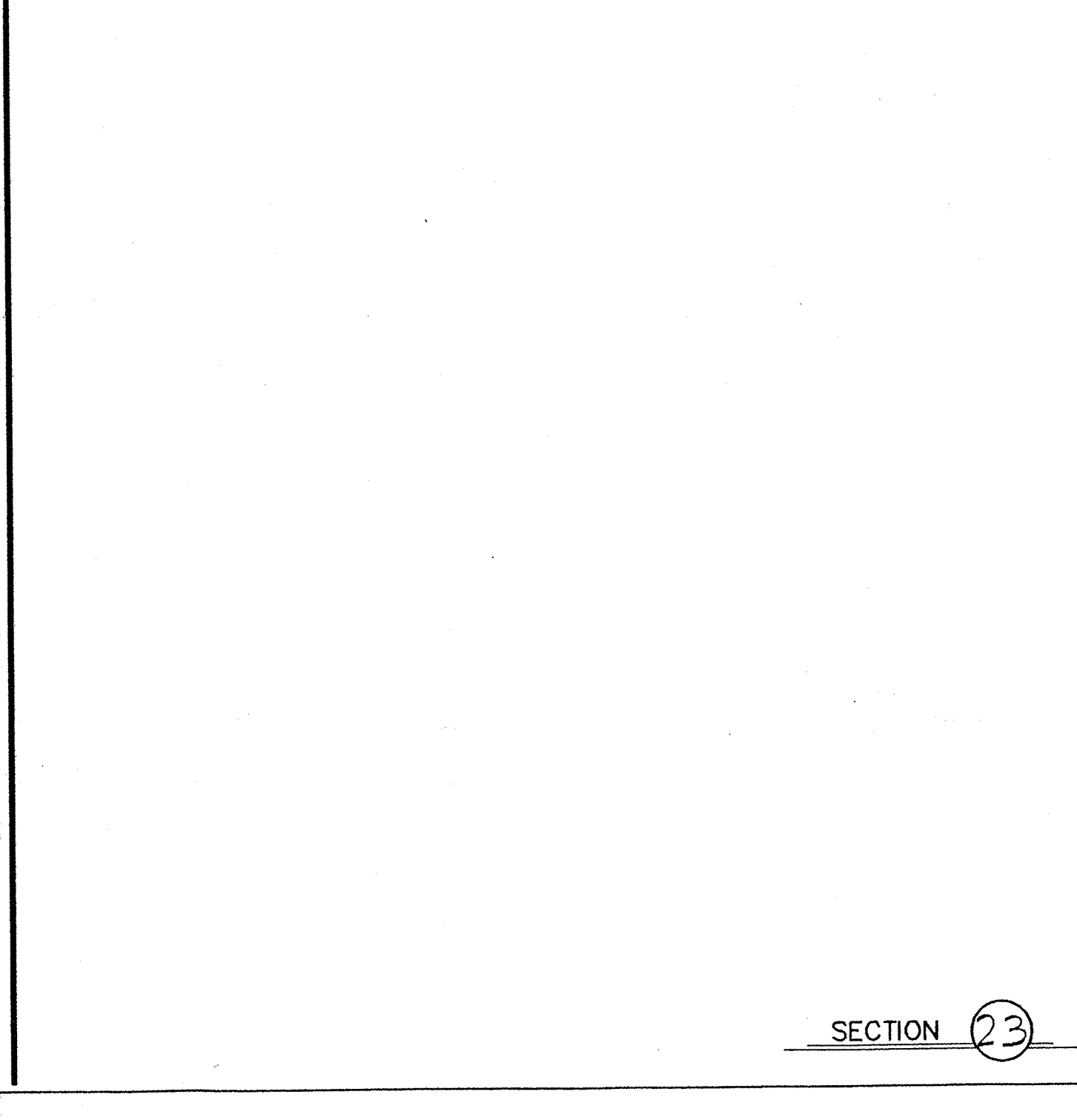
I.T. BM TO MAS. COL. CONNX. SECTION 20



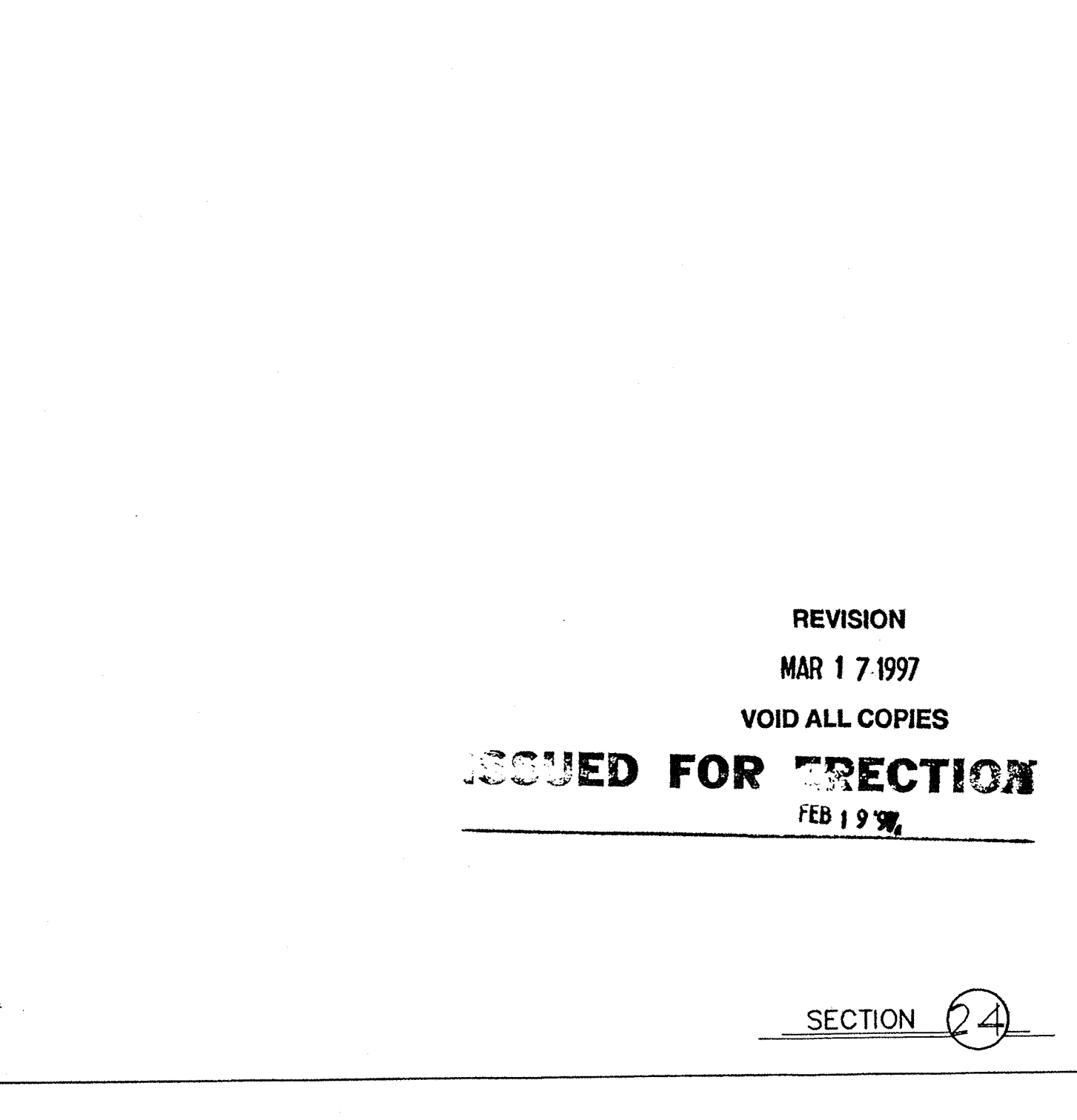
ANCHOR BOLT LAYOUT P/C COLUMN TO FOUNDATION SECTION 21



H.C. PLANK / P/S SLAB JOINT SECTION 22



SECTION 23



SECTION 24

REVISION
MAR 17 1997
VOID ALL COPIES
ISSUED FOR PRECTION
FEB 19 97

5066 South 43rd Avenue
D. Box 16130 Phoenix, AZ 85005
Phone: (602) 237-3975

CORESLAB STRUCTURES (ARIZ) INC.

No.	Date	By	Date	Revision
1	1/17/97	DB	1/17/97	
2	4/26/97	DB	4/26/97	

Architect: CARL E. NELSON & ASSOC.
Engineer: PAUL KOEHLER
Customer: CARDINAL DEVELOPMENT
Project Leader: DAVE BAIRD
Drawn: GPT
Checked: 362
Date:

SECTIONS / DETAILS

Structure: COURTHOUSE PLAZA COMPLEX
Location: SADDONA AZ

Sheet Number
PC-5
Job Number
1008