



City of Sedona Wastewater Department

Mail: 102 Roadrunner Drive Sedona, AZ 86336

Site: 7500 W. SR 89A Sedona, AZ 86336

(928) 204-2234 • Fax: (928) 204-7137

To Whom It May Concern:

The City of Sedona, Arizona is issuing **Addendum # 4** to the plans and specifications as originally issued at the time of solicitation for bids for the **SR179 Sewer Main Upsize – Phase II Project**. For any bid to be considered responsible and responsive, receipt of this addendum must be acknowledged.

As specified in the Instructions to Bidders this Addendum upon issuance has become a part of the Contract Documents.

This Addendum contains 4 pages including this page, 0 changed bid sheets, 0 plan sheets, and 0 additional Technical Specification. Any changed bid sheets shall be used in lieu of the originally issued bid sheets in order to submit a responsive bid.

This Addendum is issued for informational purposes only:

1. **Lift Station Location:** The attached map shows the location of the lift station that feeds this portion of sewer main, along with the discharge location.
2. **Pedestrian Crossing As-Builts:** The attached as-built drawings from the original construction of the 12 inch sewer main crossing Oak Creek at the pedestrian bridge. Information on both downstream and upstream manholes for this section of pipe are shown, as well as details for utilities under the bridge.

ACKNOWLEDGEMENT

I have received addendum **# 4** for the **SR179 Sewer Main Upsize – Phase II Project** as described above, and acknowledge it as part of the Contract Documents for the project.

Signature

Date

Print Business Name

Addendum # 4 issued by Roxanne Holland, PE, Director of Wastewater, City of Sedona

Roxanne Holland, PE
Director of Wastewater

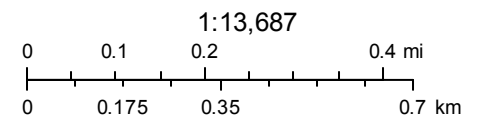
10/20/2021

Date

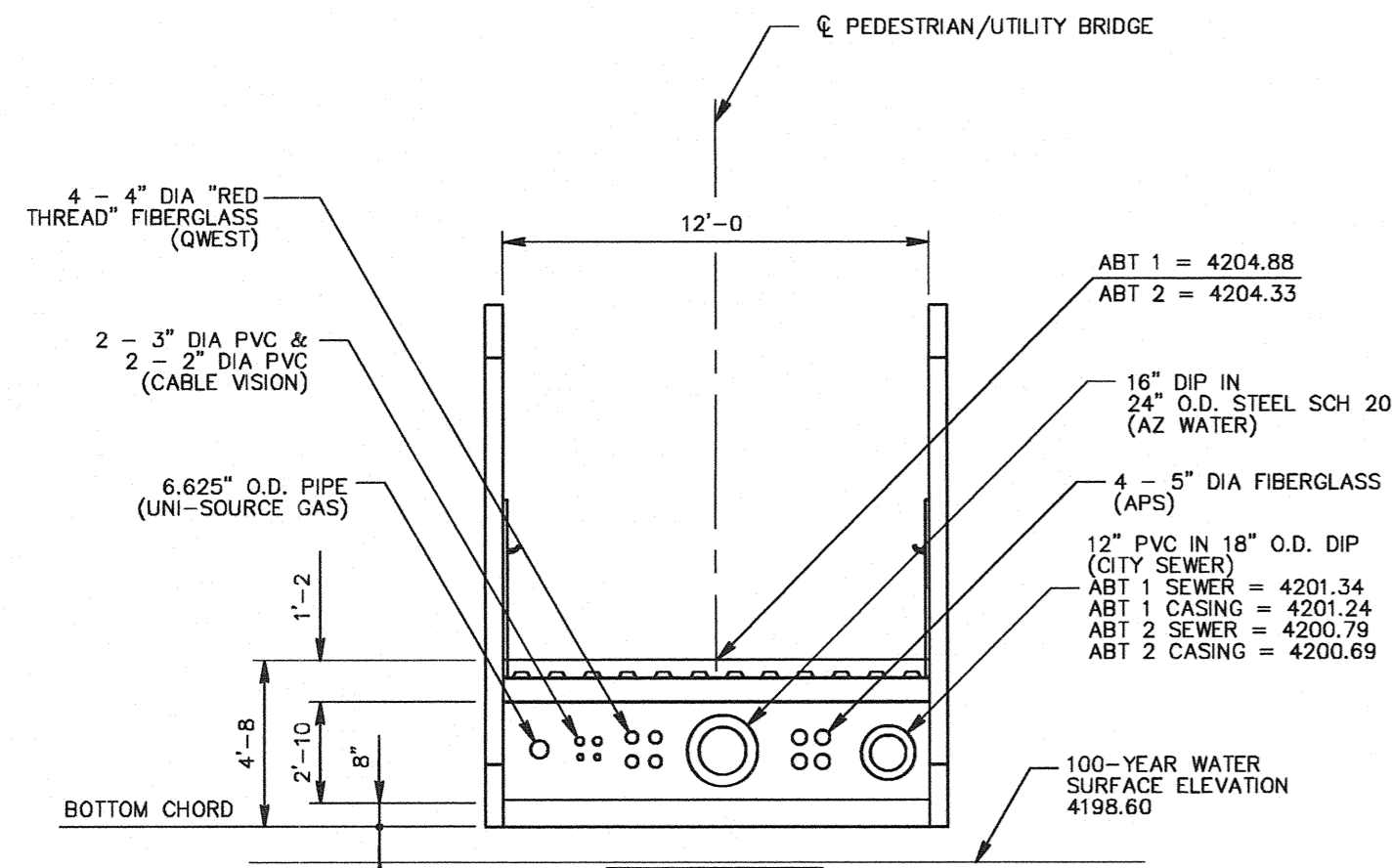
City of Sedona, Arizona



October 20, 2021

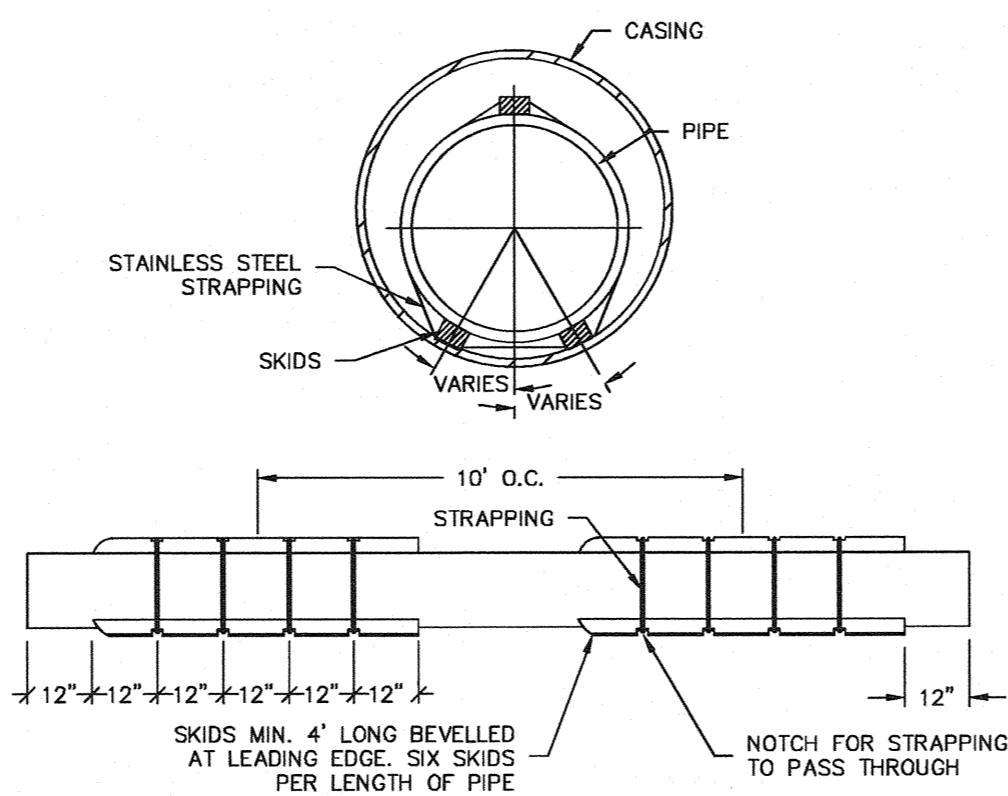


PLOTTED: May 06, 2011 10:52am



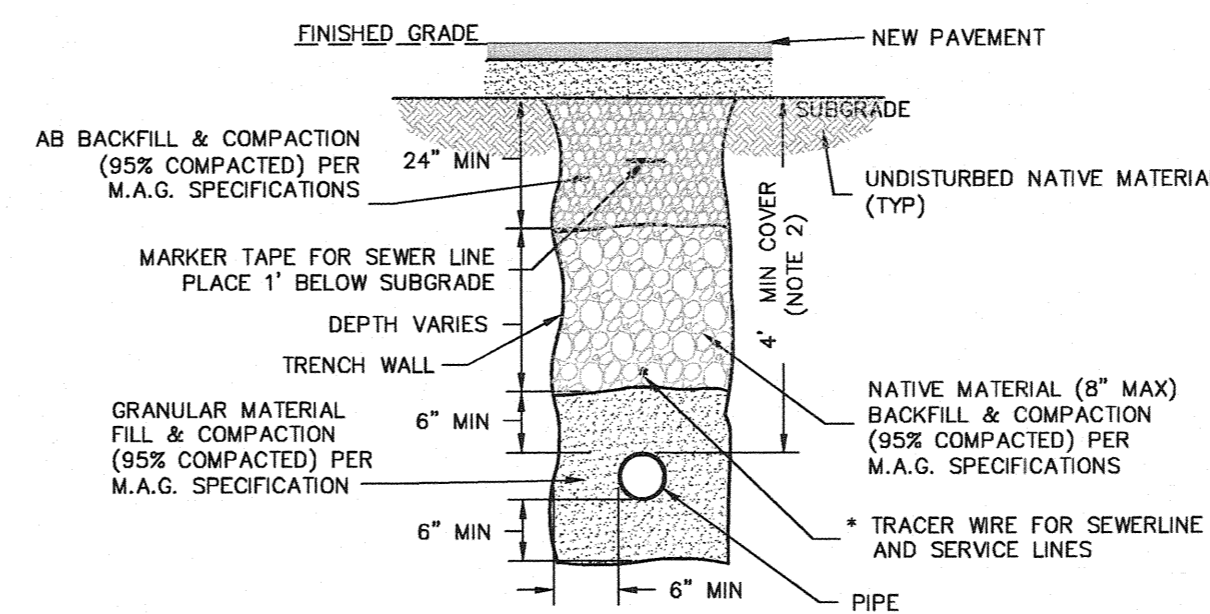
- NOTES:
1. DESIGN WEIGHT FOR SEWER LINE, LIQUID AND CARRIER PIPE IS 131.81 POUNDS PER LINEAR FOOT
 2. ADOT TO DESIGN HANGERS AND SUPPORTS.
 3. INVERT ELEVATIONS PER PROFILE.

PEDESTRIAN BRIDGE UTILITIES 1
NO SCALE P10



1. CASING SHALL BE HUNG AS PER ADOT BRIDGE DESIGN.
2. CASING SHALL BE 18\"/>

JACKING DETAIL 2
NO SCALE P10



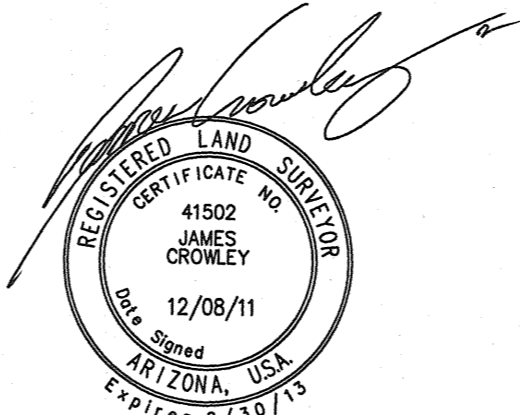
- NOTES:
1. NATIVE BACKFILL SHALL BE M.A.G. SPECS. AND MAY BE SELECTED FROM THE EXCAVATION MATERIAL OR FROM A SOURCE SELECTED BY CONTRACTOR AND APPROVED BY THE ENGINEER.
 2. UNLESS NOTED OTHERWISE ON PLANS.
 3. TRACER WIRE SHALL CONFORM TO SEDONA STANDARD DETAILS.

TYPICAL TRENCHING AND BACKFILL DETAIL NTS

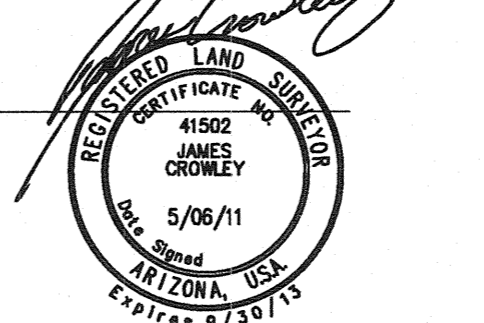
LEGEND

RIGHT OF WAY (ADOT)	---
TEMPORARY CONSTRUCTION EASEMENT (ADOT)	---
PROPOSED 8" SEWER	8"SS
PROPOSED 12" SEWER	12"SS
PROPOSED GAS	G
PROPOSED WATER (AZ WATER CO)	W
PROPOSED ELECTRIC (APS)	E
EXISTING 2' CONTOURS	4500
EXISTING PROPERTY LINES	---
EXISTING FENCE	X-X-X
EXISTING FORCE MAIN	FM
EXISTING SEWER	S-S
EXISTING FIBER OPTIC LINE	FO
EXISTING OVERHEAD ELECTRIC	OHE
EXISTING UNDERGROUND ELECTRIC	UGE
EXISTING WATER LINE	W-W
EXISTING TV LINE	TV
EXISTING TELEPHONE LINE	TL-TL
EXISTING GAS LINE	G
EXISTING STORM DRAIN	SD-SD
STORM DRAIN (ADOT)	---
RETAINING WALL (ADOT)	---
RIPRAP (ADOT)	---
IRRIGATION PIPE SLEEVE (ADOT)	---
CATCH BASIN (ADOT)	---
PROPOSED SEWER MANHOLE	MH
EXISTING SEWER MANHOLE	SS

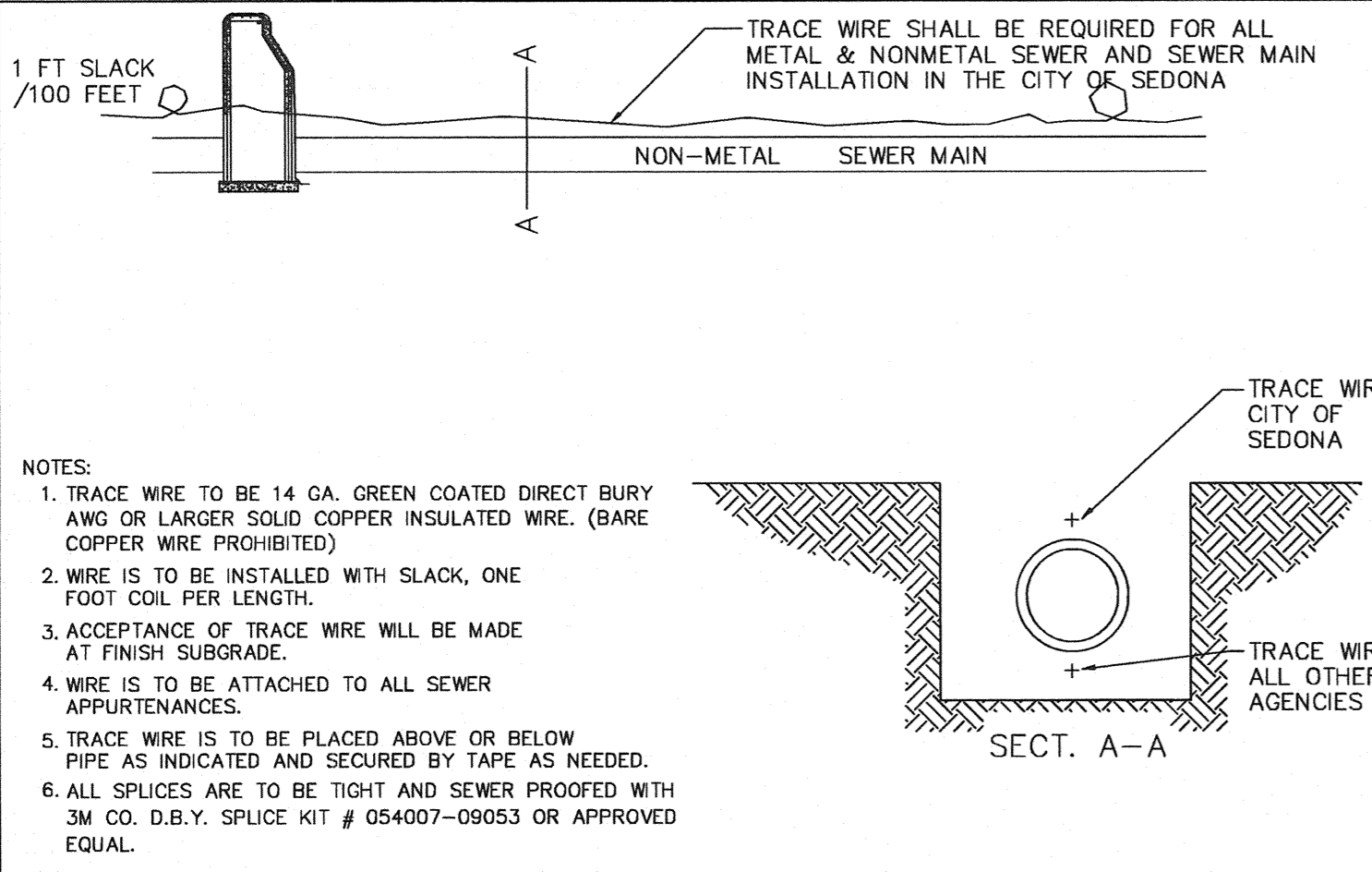
MANHOLE ID DESIGNATION:
 SW = PROPOSED MANHOLE
 COS = DATA FROM ADOT (D.M.J. 60% DRAWINGS)
 CMH = DATA FROM CHAPEL AREA 1A SEWER PROJECT (SW #04007)
 SMH = DATA FROM SW SURVEY INVESTIGATION
 LMH = DATA FROM LANDMARK ENGINEERING MYSTIC HILLS - PHASE I AS-BUILT



RECORD DRAWINGS REFLECT OBSERVED FIELD CONDITIONS AS OF JANUARY 4, 2011. I HEREBY CERTIFY TO FIELD MEASUREMENT INFORMATION SHOWN HEREON ONLY.

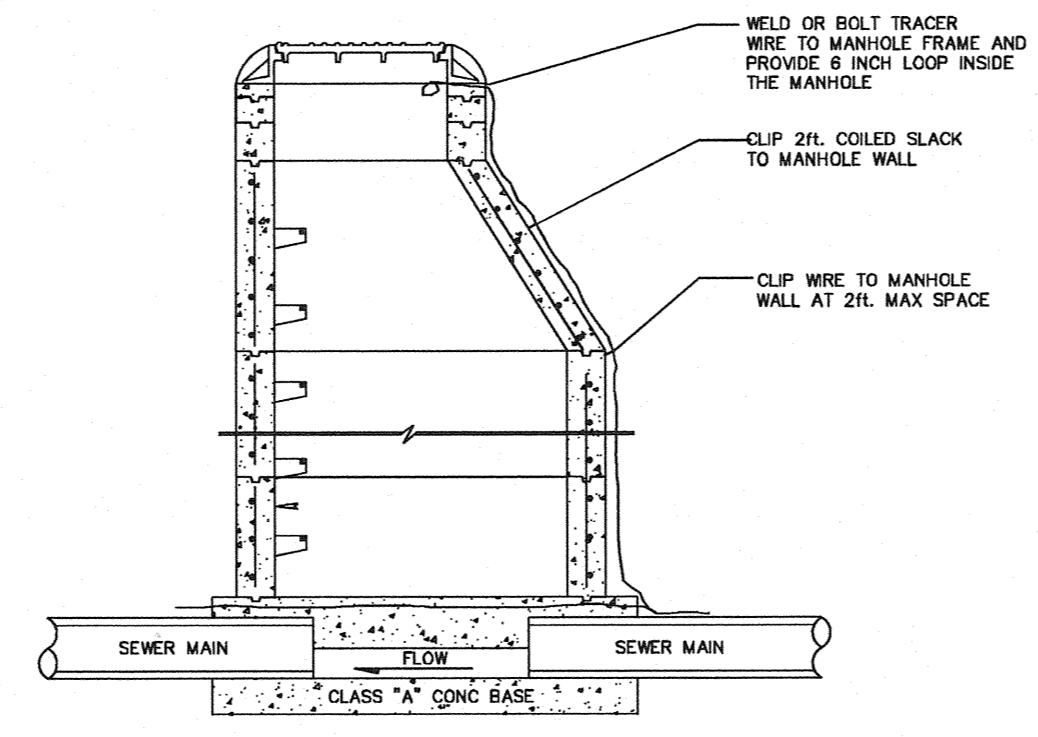


NOTE: CONSTRUCTION DRAWINGS WERE SEALED BY DAVID M. MONIHAN, P.E., 13494, ON JANUARY 30, 2007.

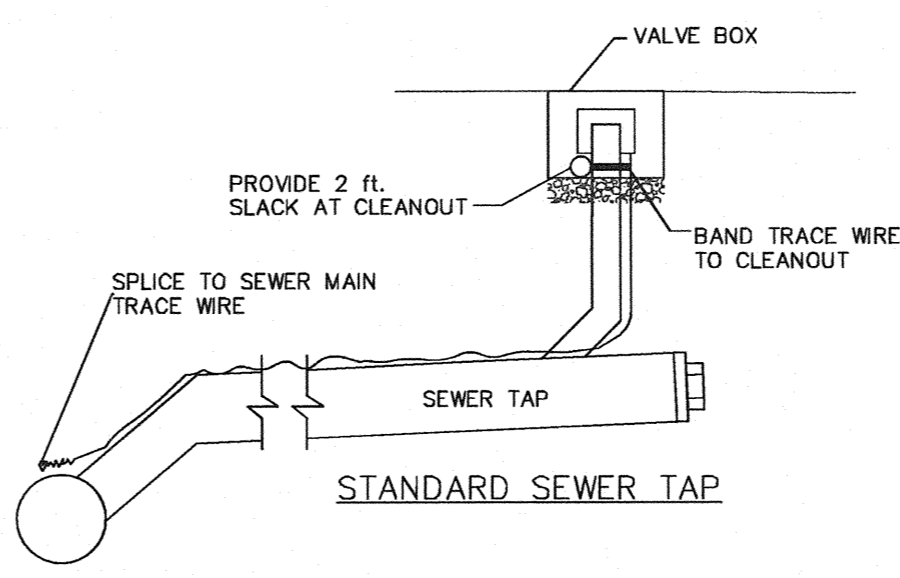


- NOTES:
1. TRACE WIRE TO BE 14 GA. GREEN COATED DIRECT BURY AWG OR LARGER SOLID COPPER INSULATED WIRE. (BARE COPPER WIRE PROHIBITED)
 2. WIRE IS TO BE INSTALLED WITH SLACK, ONE FOOT COIL PER LENGTH.
 3. ACCEPTANCE OF TRACE WIRE WILL BE MADE AT FINISH SUBGRADE.
 4. WIRE IS TO BE ATTACHED TO ALL SEWER APPURTENANCES.
 5. TRACE WIRE IS TO BE PLACED ABOVE OR BELOW PIPE AS INDICATED AND SECURED BY TAPE AS NEEDED.
 6. ALL SPLICES ARE TO BE TIGHT AND SEWER PROOFED WITH 3M CO. D.B.Y. SPLICE KIT # 054007-09053 OR APPROVED EQUAL.

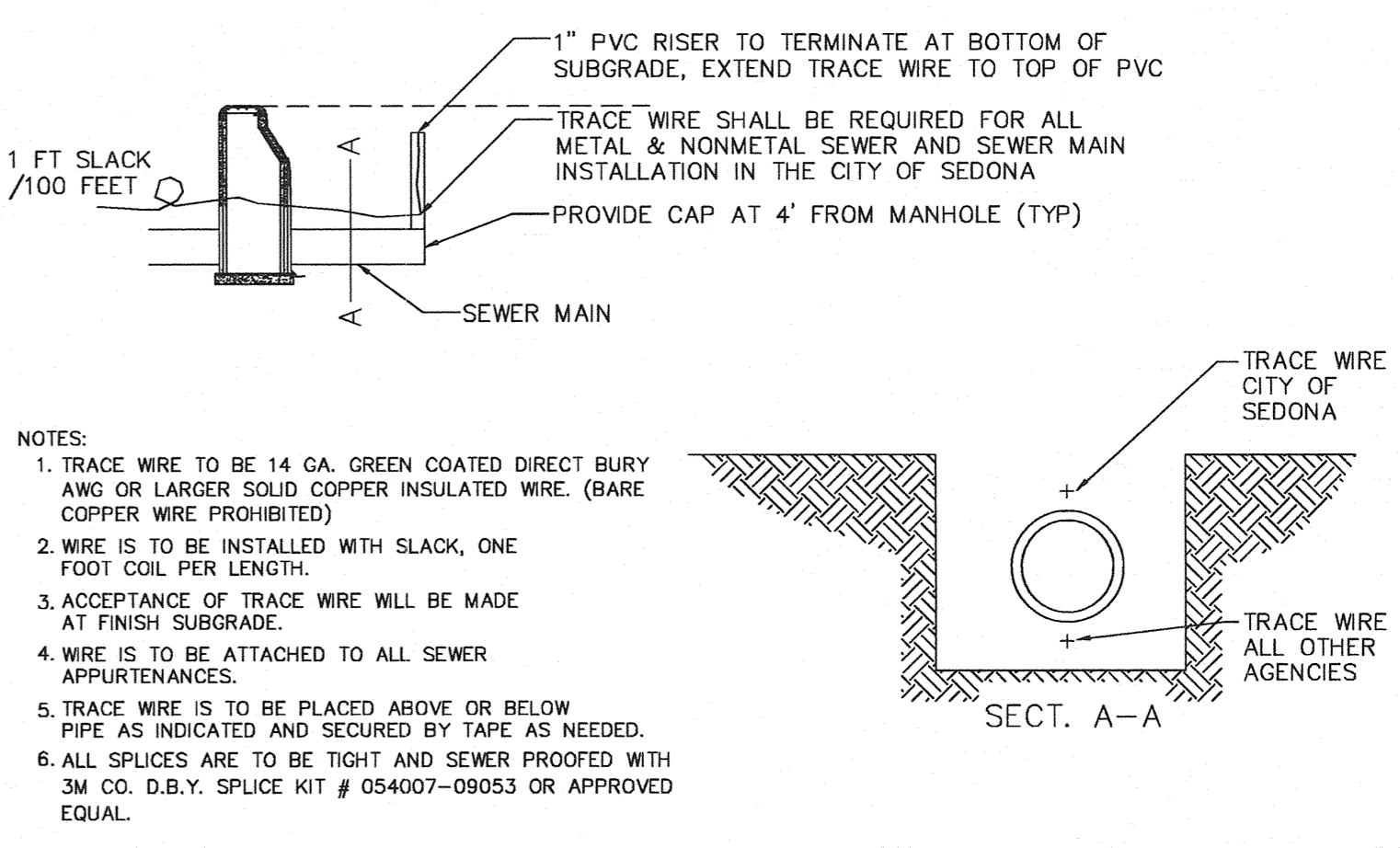
SPECIAL DETAIL NO. 01 CITY OF SEDONA SEWER TRACER WIRE DETAIL 1 OF 3 SPECIAL DETAIL NO. 01



SPECIAL DETAIL NO. 01 CITY OF SEDONA TRACER WIRE DETAIL @ MANHOLE 2 OF 3 SPECIAL DETAIL NO. 01



SPECIAL DETAIL NO. 01 CITY OF SEDONA TRACER WIRE DETAIL @ CLEANOUT 3 OF 3 SPECIAL DETAIL NO. 01



- NOTES:
1. TRACE WIRE TO BE 14 GA. GREEN COATED DIRECT BURY AWG OR LARGER SOLID COPPER INSULATED WIRE. (BARE COPPER WIRE PROHIBITED)
 2. WIRE IS TO BE INSTALLED WITH SLACK, ONE FOOT COIL PER LENGTH.
 3. ACCEPTANCE OF TRACE WIRE WILL BE MADE AT FINISH SUBGRADE.
 4. WIRE IS TO BE ATTACHED TO ALL SEWER APPURTENANCES.
 5. TRACE WIRE IS TO BE PLACED ABOVE OR BELOW PIPE AS INDICATED AND SECURED BY TAPE AS NEEDED.
 6. ALL SPLICES ARE TO BE TIGHT AND SEWER PROOFED WITH 3M CO. D.B.Y. SPLICE KIT # 054007-09053 OR APPROVED EQUAL.

SPECIAL DETAIL NO. 01 CITY OF SEDONA SEWER TRACER WIRE DETAIL 4 OF 4 SPECIAL DETAIL NO. 01

CALL TWO WORKING DAYS BEFORE YOU DIG
1-800-STAKE-IT

REVISIONS

NO.	DESCRIPTION	DATE	BY
1	REVISIONS	11/06/06	MWJ
2	QUANTITIES	01/29/07	MWJ
3	NON-RE	12/08/11	JC

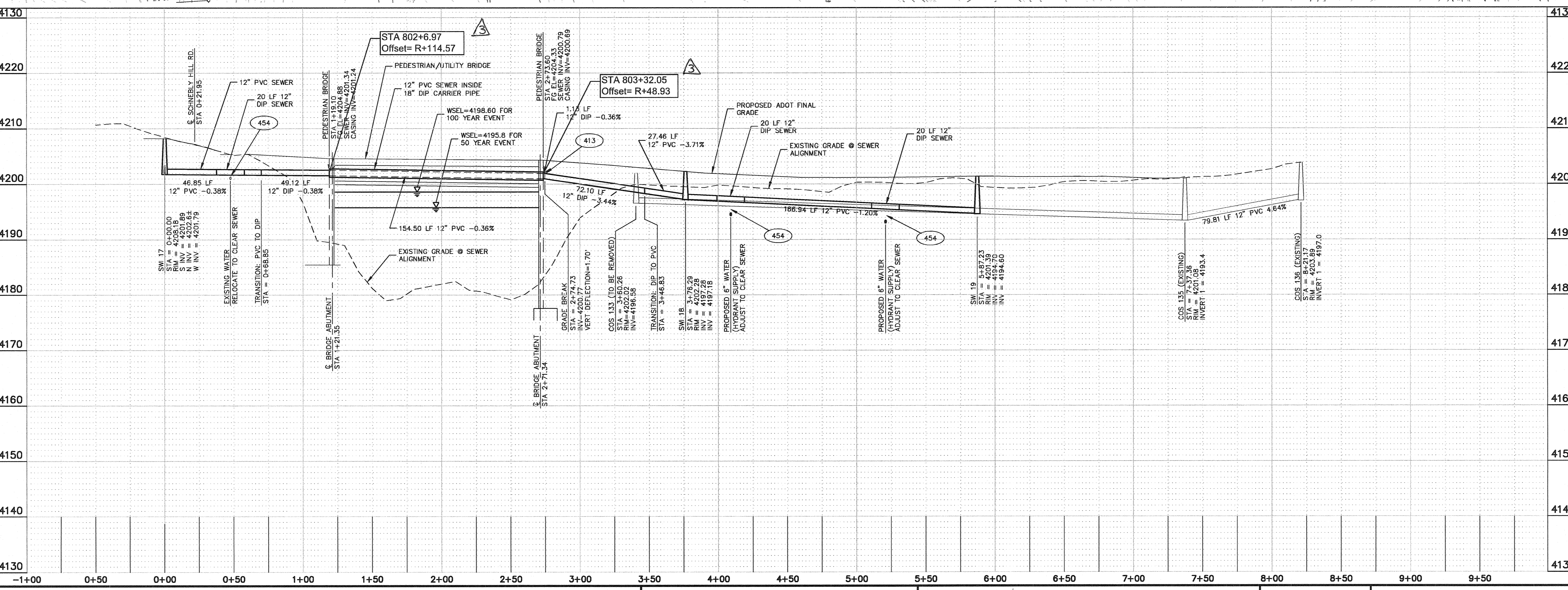
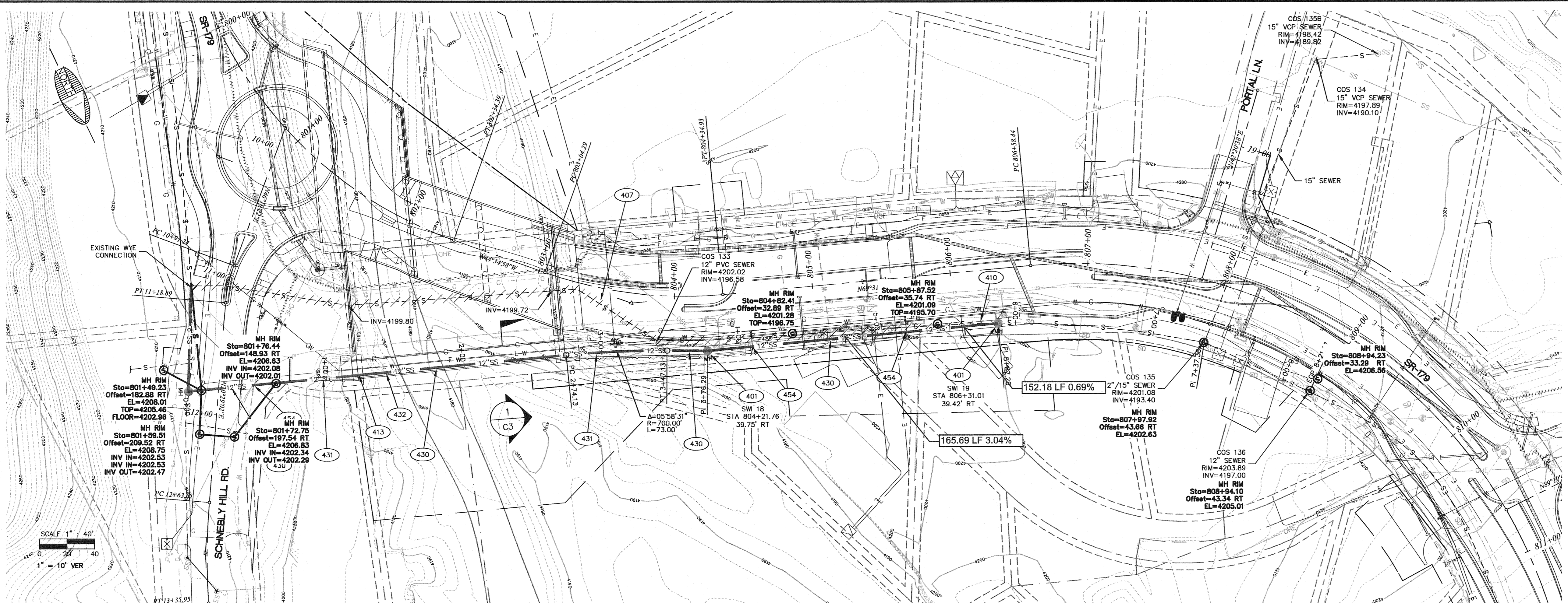
SWI
 Shephard Wesnitzer, Inc.
 75 Kall of Place
 Sedona, AZ 86336
 928.282.1061
 928.282.2058 fax
 www.swiaz.com

JOB NO: 05257/06046
 DATE: NOV 06
 SCALE: AS SHOWN
 DRAWN: MWJ
 DESIGN: DMM/MWJ
 CHECKED: DMM

SR-179 SEWER LINE CROSSINGS & RELOCATIONS
 SEDONA ARIZONA
LEGEND AND DETAILS
 DRAWING NO. **C3**
 SHT NO. 3 OF 14

FILE: \\S41\Big Disk (V)\2011-04-08\PROJECTS\2007\07289\Survey\Phase two\02\Viewer\asht\07289\Asht-C3\Utilities.dwg MWJ-C3D11

FILE: \\S41\big Disk (V)\2011-04-08\PROJECTS\2007\07289\Survey\Phase two 002\sewer.asst\07289 A811-P8-P10.dwg MW-C3D11



SHEET NOTES

1. REFER TO THE PEDESTRIAN BRIDGE UTILITIES AND JACKING DETAIL ON SHEET C3.

KEY NOTES

401 (2 EA.) CONSTRUCT 48" DIA. SEWER PRE-CAST MANHOLE PER M.A.G. STD. DTL 420 AND FRAME & COVER PER M.A.G. STD. DTL 424. TRACER WIRE PER SEDONA STD. DETAILS DWG C3.

407 (584 LF.) REMOVE EXISTING SEWER PER ADOT ROAD CONSTRUCTION REQUIREMENTS.

410 (1 EA.) PLUG ABANDONED PIPE.

413 VERTICAL DEFLECTION USING PIPE/Joint DEFLECT PER MANUFACTURER'S RECOMMENDATION.

430 (396 LF.) CONSTRUCT 12" GRAVITY SEWER LINE (SDR-35 PVC) COMPLETE INCLUDING ALL APPURTENANCES PER M.A.G. STD. 615. TRENCHING & BACKFILL PER M.A.G. STD. 601 AND TYPICAL TRENCH DETAIL DWG C3. TRACER WIRE PER SEDONA STD. DETAILS DWG C3.

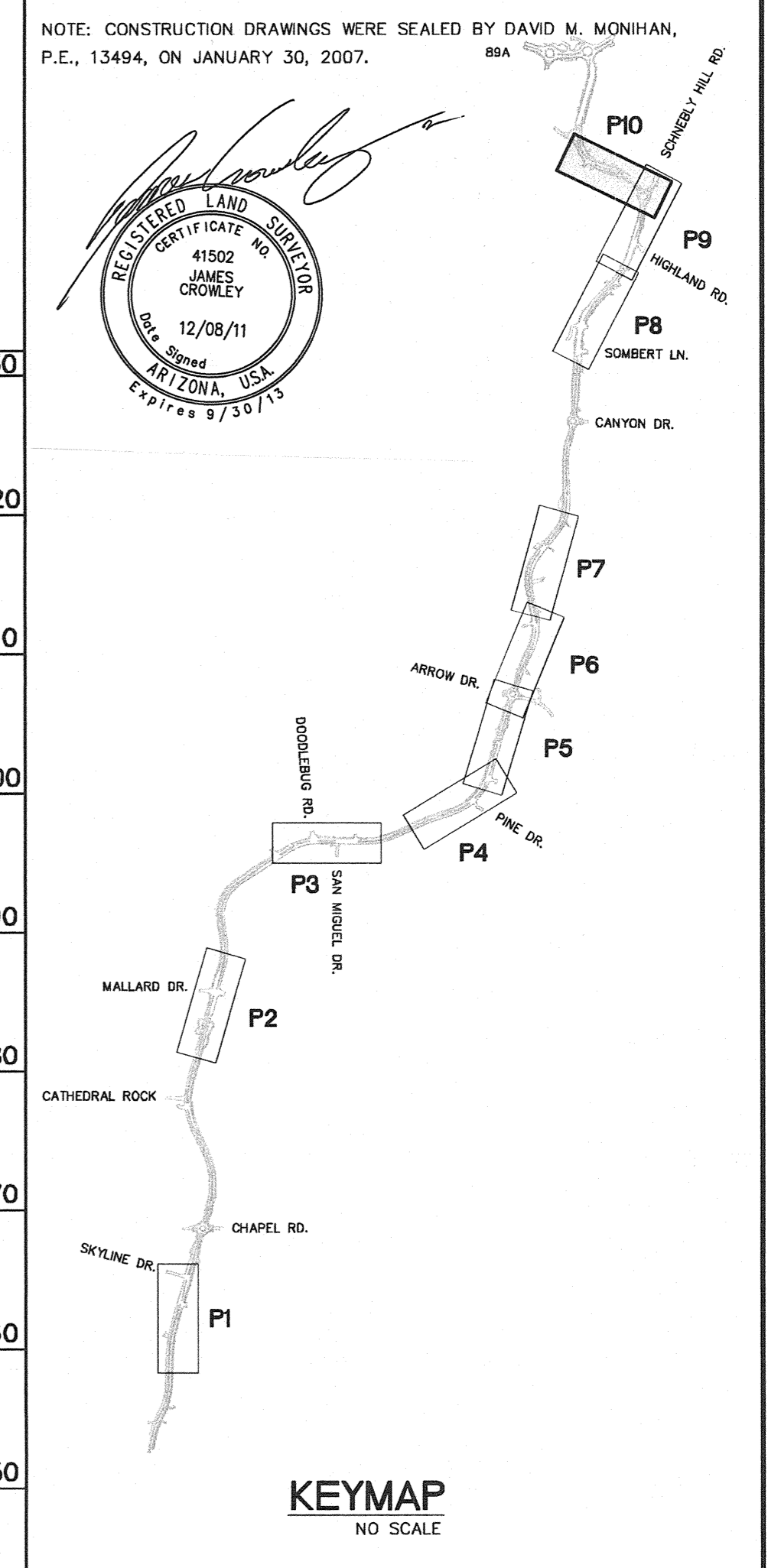
431 (183 LF.) INSTALL 12" GRAVITY SEWER LINE (CLASS 350 DIP) COMPLETE INCLUDING ALL APPURTENANCES PER M.A.G. STD. 615. TRENCHING & BACKFILL PER M.A.G. STD. 601 AND TYPICAL TRENCH DETAIL DWG C3. TRACER WIRE PER SEDONA STD. DETAILS DWG C3.

432 (154 LF.) CONSTRUCT 18" CARRIER PIPE (CLASS 250 DIP) PER DETAIL DWG C3. TRACER WIRE PER SEDONA STD. DETAILS DWG C3.

454 (3 EA.) CONSTRUCT WATER/SEWER CROSSING PER M.A.G. STD. DTL 404-2 INCLUDING WATER LINE RELOCATION. WATER/SEWER CROSSING SHALL CONFORM TO UTILITY REQUIREMENTS.

RECORD DRAWINGS REFLECT OBSERVED FIELD CONDITIONS AS OF JANUARY 4, 2011. I HEREBY CERTIFY TO FIELD MEASUREMENT INFORMATION SHOWN HEREON ONLY.

NOTE: CONSTRUCTION DRAWINGS WERE SEALED BY DAVID M. MCKINHAN, P.E., 13494, ON JANUARY 30, 2007.



CALL TWO WORKING DAYS BEFORE YOU DIG
1-800-STAKE-IT

REVISIONS			
NO.	DESCRIPTION	DATE	BY
1	REVISIONS	11/06/06	MWJ
2	QUANTITIES	01/29/07	MWJ
3	STA. 0 PPSUIT	12/08/11	JC

SWI
Shepard Wesnitzer, Inc.
75 Kall of Place
Sedona, AZ 86336
928.282.1061
928.282.2058 fax
www.swiaz.com
© 2006, Shepard-Wesnitzer, Inc.

JOB NO: 05257/06046
DATE: NOV 06
SCALE: AS NOTED
DRAWN: MWJ
DESIGN: DMJ/MWJ
CHECKED: DMJ

SR-179 SEWER LINE CROSSINGS & RELOCATIONS
SEDONA ARIZONA
DRAWING NO. P10
SHT NO. 14 OF 14