



# CITY OF SEDONA LOS ABRIGADOS DRIVEWAY CONSTRUCTION PLANS

LOCATED IN A PORTION OF SECTION 7 AND 18, TOWNSHIP 17 NORTH,  
RANGE 6 EAST, GILA AND SALT RIVER MERIDIAN,  
COCONINO COUNTY, ARIZONA.

### CONTACT INFORMATION

**OWNER:** CITY OF SEDONA  
102 ROADRUNNER DRIVE  
SEDONA, ARIZONA 86336  
(928) 203-5039  
J. ANDY DICKEY, P.E., DIRECTOR OF  
PUBLIC WORKS/CITY ENGINEER

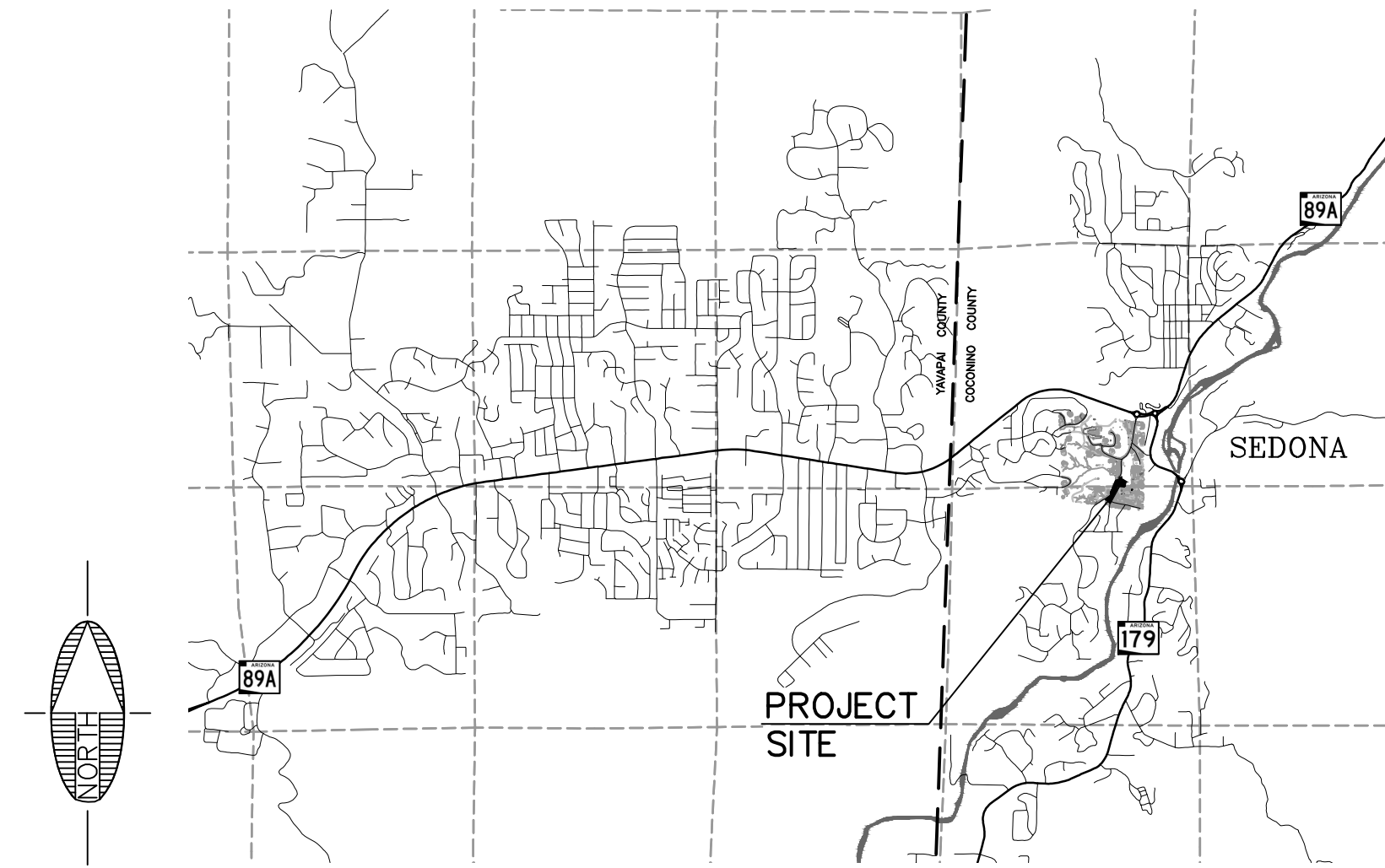
**MAYOR:** SANDY MORIARTY

**VICE MAYOR:** SCOTT JABLOW

**CITY COUNCIL:** KATHY KINSELLA  
TOM LAMKIN  
HOLLI PLOOG  
JON THOMPSON  
JESSICA WILLIAMSON

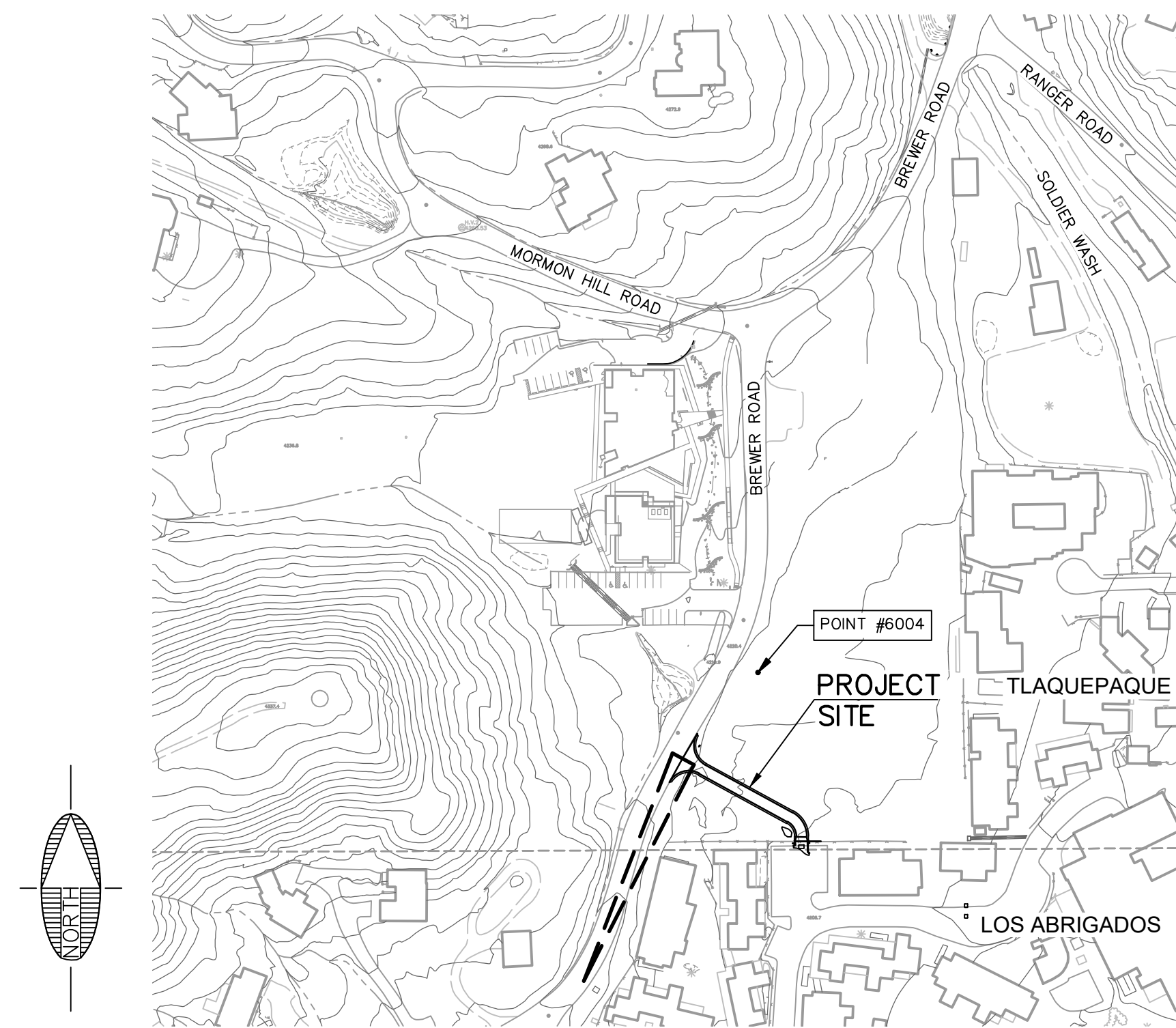
**CITY MANAGER:** KAREN OSBURN

**ENGINEER:** SHEPHARD-WESNITZER, INC.  
75 KALOFF PLACE  
SEDONA, ARIZONA 86336  
(928) 282-1061  
ART BECKWITH, P.E.



VICINITY MAP

NO SCALE



LOCATION MAP

NO SCALE

### COORDINATE SYSTEM DETAILS

**LINEAR UNIT:** INTERNATIONAL FOOT

**GEODETIC DATUM:** NAD 1983 (NSRS 2007)

**VERTICAL DATUM:** NAVD 1988 (SEE BELOW)

**SYSTEM:** STATE PLANE COORDINATE SYSTEM (CITY OF SEDONA)

**ZONE:** ARIZONA CENTRAL 0202

**PROJECTION:** TRANSVERSE MERCATOR  
 LATITUDE OF GRID ORIGIN: 31°00'00" N  
 LONGITUDE OF CENTRAL MERIDIAN: 111°55'00" W  
 NORTHING AT GRID ORIGIN: 0.000 FT  
 EASTING AT CENTRAL MERIDIAN: 700,000 FT  
 CENTRAL MERIDIAN SCALE FACTOR: 0.9999 (EXACT)

ALL DISTANCES AND BEARINGS SHOWN HEREON ARE NOT GRID VALUES BUT PROJECTED FOR THE PRECEDING COORDINATE SYSTEM DEFINITION. THIS DEFINITION IS SUCH THAT GRID DISTANCES ARE NOT EQUIVALENT TO "GROUND" DISTANCES IN THE PROJECT AREA.

ORTOMETRIC HEIGHTS (ELEVATIONS) WERE TRANSFERRED TO THE SITE FROM POINT "VORTEX" (NGS PID AJ5637) USING GPS WITH NGS GEOID MODEL "GEOID03". ELEVATIONS SHOWN HEREON ARE REFERENCED TO THE PUBLISHED ELEVATION OF THIS STATION.

THE SURVEY WAS CONDUCTED USING GPS REFERENCED TO THE NATIONAL SPATIAL REFERENCE SYSTEM, 2007 READJUSTMENT. A PARTIAL LIST OF POINT COORDINATES FOR THIS SURVEY IS GIVEN BELOW (ADDITIONAL COORDINATES ARE AVAILABLE UPON REQUEST).

**POINT #28 "VORTEX" (NGS PID AJ5637)**  
 LATITUDE: 34°50'46.53562"N    NORTHING: 1399355.912  
 LONGITUDE: 111°49'41.94433"W    EASTING: 726507.379  
 ELLIPSOID HEIGHT: 4384.140 FT    ELEVATION: 4465.054 FT

**POINT #52 "Y492" (NGS PID ES0652)**  
 LATITUDE: 34°51'45.45699"N    NORTHING: 14005328.118  
 LONGITUDE: 111°46'53.08508"W    EASTING: 740572.409  
 ELLIPSOID HEIGHT: 4359.495 FT    ELEVATION: 4439.536 FT

**POINT #6004 FOUND REBAR AND CAP STAMPED "RLS 27253"**  
 LATITUDE: 34°51'43.90992"N    NORTHING: 1405178.297  
 LONGITUDE: 111°45'57.738571"W    EASTING: 745184.421  
 ELLIPSOID HEIGHT: 4058.283 FT    ELEVATION: 4138.171 FT

### LEGEND

- PARCEL BOUNDARIES
- - - RECORD EASEMENTS
- - - - NEW DRAINAGE EASEMENT
- 4440 --- EXISTING INDEX CONTOURS
- EXISTING INTERMEDIATE CONTOURS
- EXISTING BUILDINGS
- X - X - X - X - EXISTING FENCE
- EXISTING RETAINING WALL
- EXISTING SWALE
- PROPOSED SWALE
- W --- W --- WATER BLUESTAKE
- OHE --- OHE --- OVERHEAD UTILITY LINE
- TV --- TV --- TV CABLE BLUESTAKE
- G --- G --- G --- GAS LINE BLUESTAKE
- UGE --- UGE --- ELECTRIC BLUESTAKE
- S --- S --- SEWER BLUESTAKE
- (S) SEWER MANHOLE
- (C) CLEAN OUT
- (PB) FULL BOX
- (CB) CATCH BASIN
- (TR) TRANSFORMER
- (GM) GAS METER
- (GR) GAS RISER
- (UP) UTILITY POLE
- (DG) DOWN GUY
- (EM) ELECTRIC METER
- (TR) TELEPHONE RISER
- (LP) LIGHT POLE
- (S) SIGN
- (FH) FIRE HYDRANT
- (IV) IRRIGATION VALVE
- (JB) JUNCTION BOX
- (WM) WATER METER
- (WR) WATER RISER
- (WV) WATER VALVE
- (CMP) CORRUGATED METAL PIPE
- (HDPE) HIGH-DENSITY POLYETHYLENE
- (CON) CONCRETE
- (AGG) AGGREGATE BASE
- (DGR) DECOMPOSED GRANITE
- (ASP) ASPHALT CONCRETE

### SHEET INDEX

SHT NO.	DWG NO.	TITLE
1	C1	COVER SHEET
2	C2	NOTES & DETAILS
3	C3	CONSTRUCTION PLAN

### APPROVAL

APPROVED: \_\_\_\_\_ DATE \_\_\_\_\_  
 J. ANDY DICKEY, P.E.    DIRECTOR OF PUBLIC WORKS, CITY ENGINEER

### RECORD DRAWING STATEMENT

I, \_\_\_\_\_, HEREBY STATE, BASED ON MY FIELD OBSERVATION AND INFORMATION PROVIDED BY THE GENERAL CONTRACTOR AND OTHERS, THAT THE WORK ON SHEETS 1 THROUGH 3, MARKED AS "RECORD DRAWING" HAS BEEN CONSTRUCTED IN SUBSTANTIAL CONFORMANCE WITH THESE CONSTRUCTION PLANS SPECIFICATIONS, INCLUDING CHANGES AND REVISIONS.

REGISTERED LAND SURVEYOR/ENGINEER    DATE \_\_\_\_\_  
 REGISTRATION NUMBER    EXPIRATION DATE \_\_\_\_\_

REVISIONS			
NO.	DESCRIPTION	DATE	BY

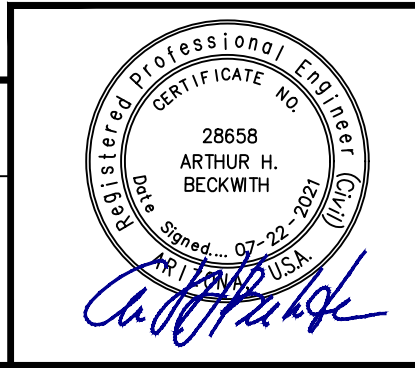
**SWI**  
 Shephard Wesnitzer, Inc.  
 www.swiaz.com

75 Kaloff Place  
 Sedona, AZ 86336  
 928.282.1061  
 928.282.2058 fax

JOB NO:	20234
DATE:	JUL 21
SCALE:	AS SHOWN
DRAWN:	EGM
DESIGN:	AHB
CHECKED:	AHB

LOS ABRIGADOS DRIVEWAY    SEDONA ARIZONA

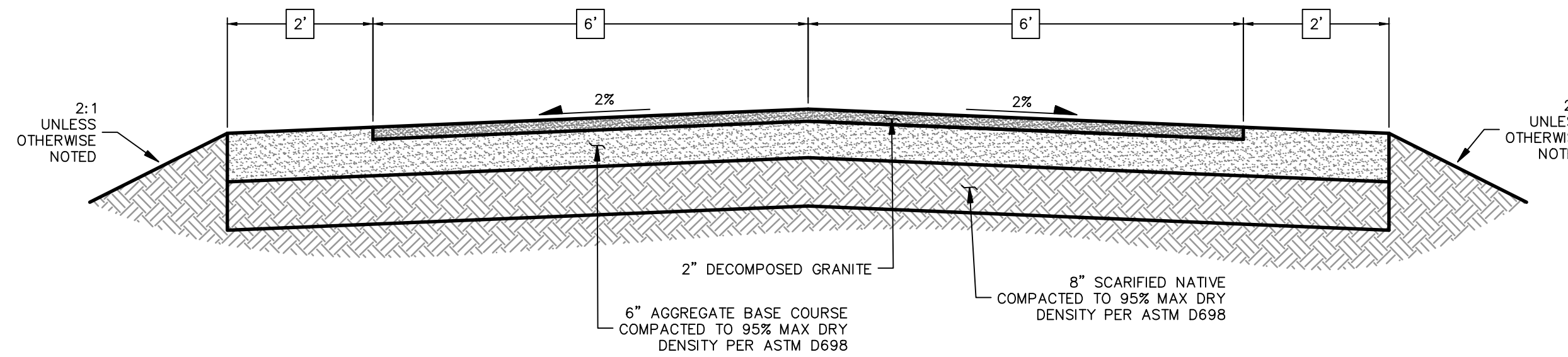
COVER SHEET



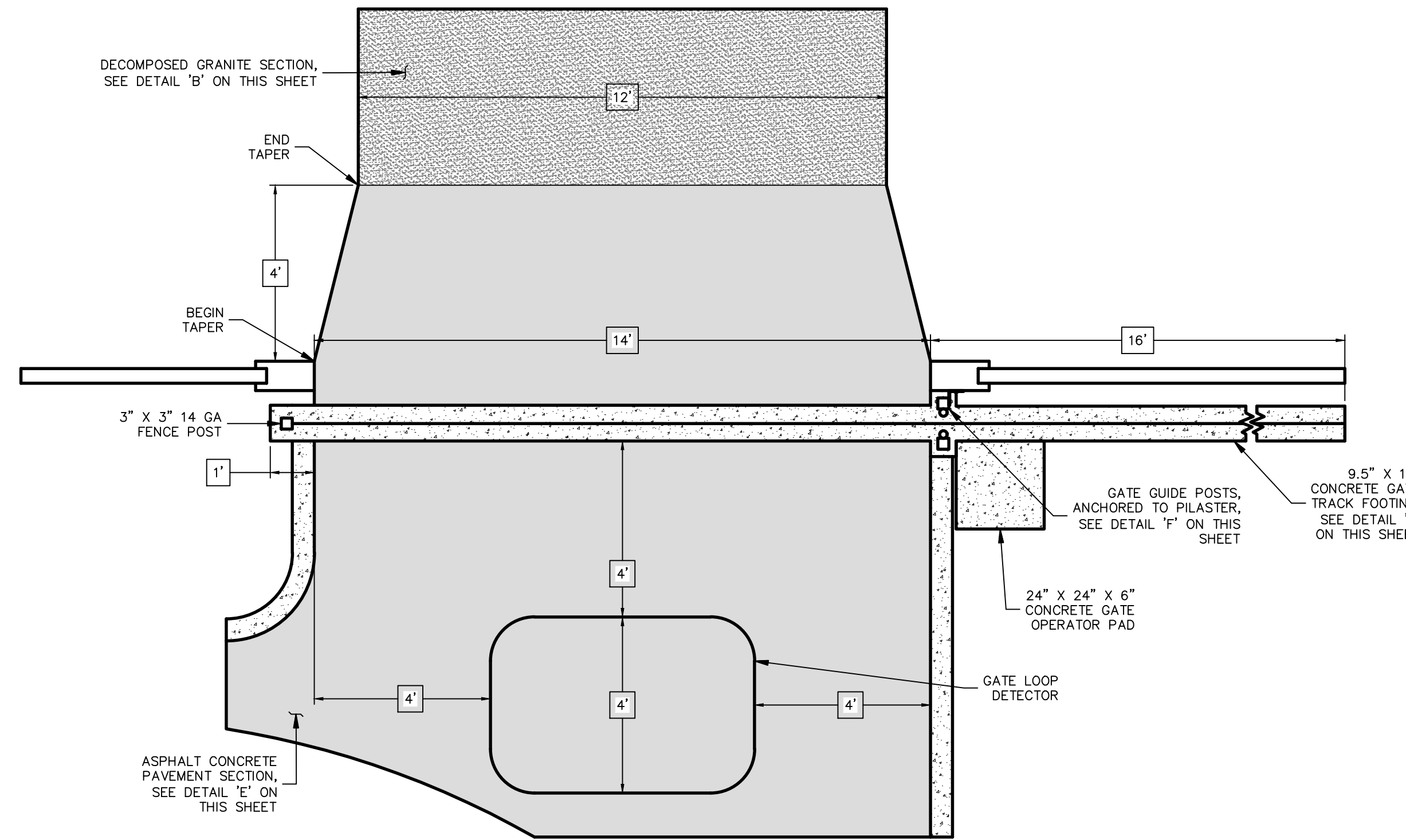
DRAWING NO.	
C1	
SHT NO.	OF
1	3

**GENERAL NOTES**

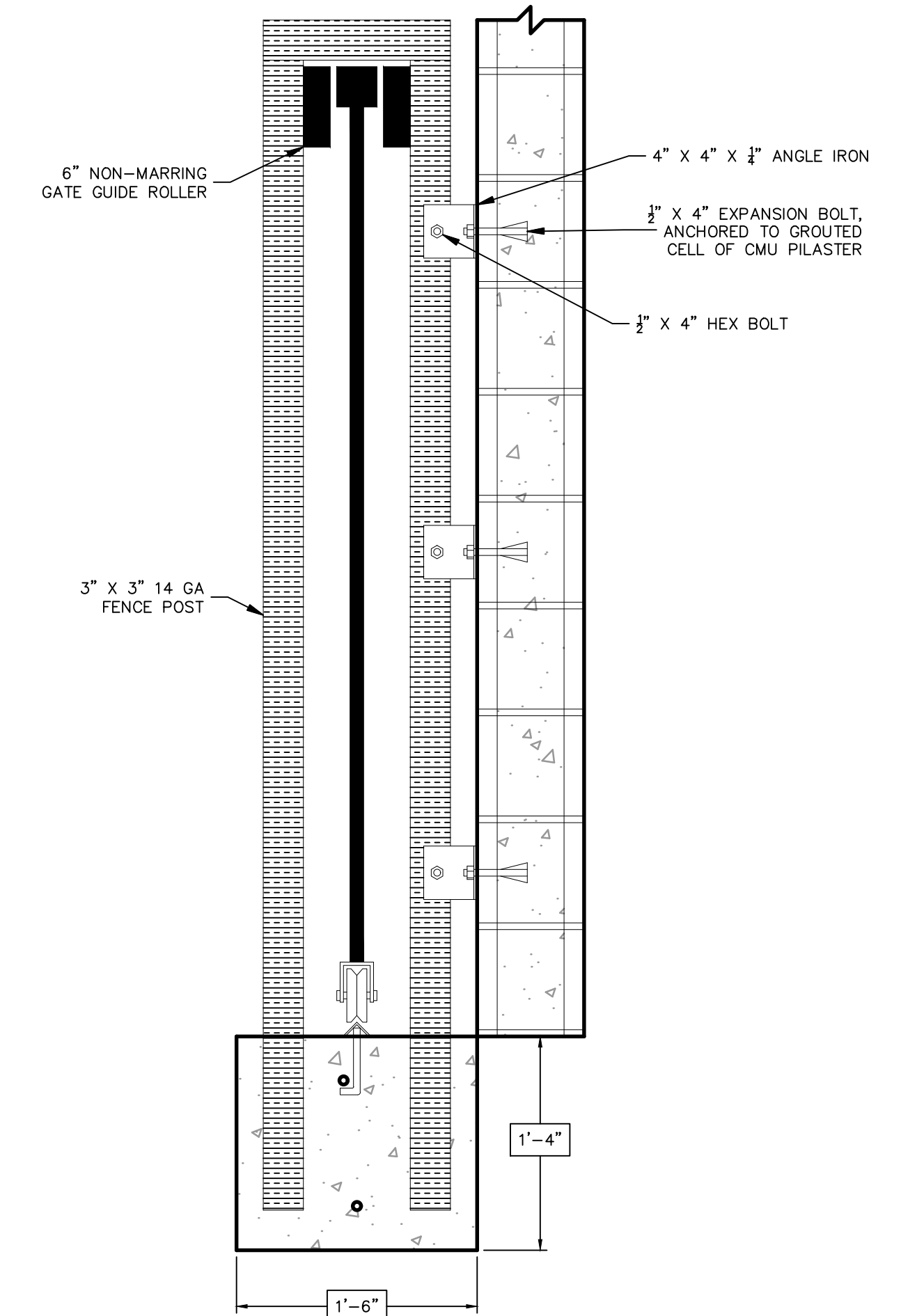
- ALL QUANTITIES SHOWN ARE APPROXIMATE AND ARE FURNISHED SOLELY FOR THE CONTRACTOR'S CONVENIENCE. IT IS THE SOLE RESPONSIBILITY OF THE CONTRACTOR TO VERIFY THE ACTUAL QUANTITIES OF WORK REQUIRED AND BASE HIS BID ON HIS OWN INDEPENDENT ESTIMATE OF THE WORK SCOPE AND QUANTITIES OF MATERIALS REQUIRED. THEY DO NOT NECESSARILY CORRESPOND TO BID SCHEDULE ITEMS. PAYMENT WILL BE BASED ON BID SCHEDULE ITEMS. THE CONTRACTOR SHALL NOT BE RELIEVED OF RESPONSIBILITY FOR INDEPENDENTLY ESTIMATING QUANTITIES PRIOR TO BIDDING. THE CONTRACTOR REPRESENTS THAT THE TOTAL CONTRACT SUM IS ADEQUATE COMPENSATION FOR COMPLETING THE ENTIRE PROJECT AS SHOWN ON THE PLANS.
- THE LOCATION OF EXISTING FEATURES INDICATED ON THE PLANS ARE APPROXIMATE ONLY. THE CONTRACTOR SHALL NOT BE RELIEVED OF RESPONSIBILITY FOR MAKING COMPLETE AND ACCURATE ON-SITE DETERMINATIONS OF THE LOCATIONS OF ALL UTILITIES, STRUCTURES AND FIELD CONDITIONS, WHICH MAY AFFECT THE PROGRESS OF THE WORK.
- THESE PLANS ARE SUBJECT TO THE INTERPRETATION OF INTENT BY THE ENGINEER. ALL QUESTIONS REGARDING THESE PLANS SHALL BE DIRECTED TO THE ENGINEER. ANY INTERPRETATION OF THE PLANS BY ANYONE OTHER THAN THE ENGINEER SHALL BE RESPONSIBLE FOR ANY CONSEQUENCES THEREOF.
- ADEQUATE DRAINAGE OF THE CONSTRUCTION AREA SHALL BE PROVIDED AT ALL TIMES. CONSTRUCTION DRAINS SHALL BE PROVIDED AS NEEDED TO ENABLE WATER TO DRAIN FROM THE CONSTRUCTION AREA RAPIDLY AND WITHOUT DAMAGING THE WORK IN PROGRESS. TO FURTHER PROMOTE GOOD DRAINAGE OF THE SITE, DRAINAGE CHANNELS, CULVERTS, AND STRUCTURES, SHALL BE CONSTRUCTED FROM DOWNSTREAM TO UPSTREAM IN SUCH A WAY THAT, DURING CONSTRUCTION, THEY DO NOT IMPEDE THE FLOW OF WATER FROM THE CONSTRUCTION AREA.
- DAMAGE TO ADJACENT PROPERTIES OR TO ANY PORTION OF THE WORK CAUSED BY THE CONTRACTOR'S FAILURE TO PROVIDE ADEQUATE DRAINAGE OF THE CONSTRUCTION SITE OR TO ORDER THE WORK SO AS TO MINIMIZE THE POSSIBLE EXTENT OF SUCH DAMAGE SHALL BE REPAIRED AT THE CONTRACTOR'S EXPENSE.
- ALL WORK SHALL CONFORM TO MAG STANDARD SPECIFICATIONS FOR PUBLIC WORKS CONSTRUCTION AND CURRENT REVISIONS THERETO AS MODIFIED BY THE CITY OF SEDONA CITY CODE SECTION 7.
- EXACT POINT OF MATCHING & TERMINATION OF IMPROVEMENTS MAY BE ADJUSTED IN THE FIELD BY THE ENGINEER IF NECESSARY.
- ELEVATIONS SHOWN ON PLAN ARE TO FINISHED GRADE, UNLESS OTHERWISE NOTED OR SPECIFIED.
- A SET OF SIGNED AND APPROVED CONSTRUCTION DOCUMENTS WILL BE KEPT AT ALL TIMES AT THE JOB SITE ON WHICH ALL CHANGES OR VARIATIONS IN THE WORK, INCLUDING ALL EXISTING UTILITIES, ARE TO BE RECORDED AND/OR CORRECTED DAILY AND SUBMITTED TO THE CITY ENGINEER WHEN THE WORK TO BE DONE IS COMPLETED.
- CONTRACTOR SHALL PROVIDE AND MAINTAIN SUFFICIENT BARRICADES TO PROVIDE FOR THE SAFETY OF THE GENERAL PUBLIC TO THE SATISFACTION OF THE PUBLIC WORKS DIRECTOR.
- ALL MATERIALS SHALL BE FURNISHED AND INSTALLED BY THE CONTRACTOR UNLESS OTHERWISE NOTED.
- THE CONTRACTOR SHALL PROVIDE AND MAINTAIN ACCESS AT ALL TIMES TO ADJACENT PROPERTY.
- PRIOR TO COMMENCEMENT OF CONSTRUCTION CONTRACTOR TO COORDINATE WORK WITH ALL UTILITY COMPANIES.



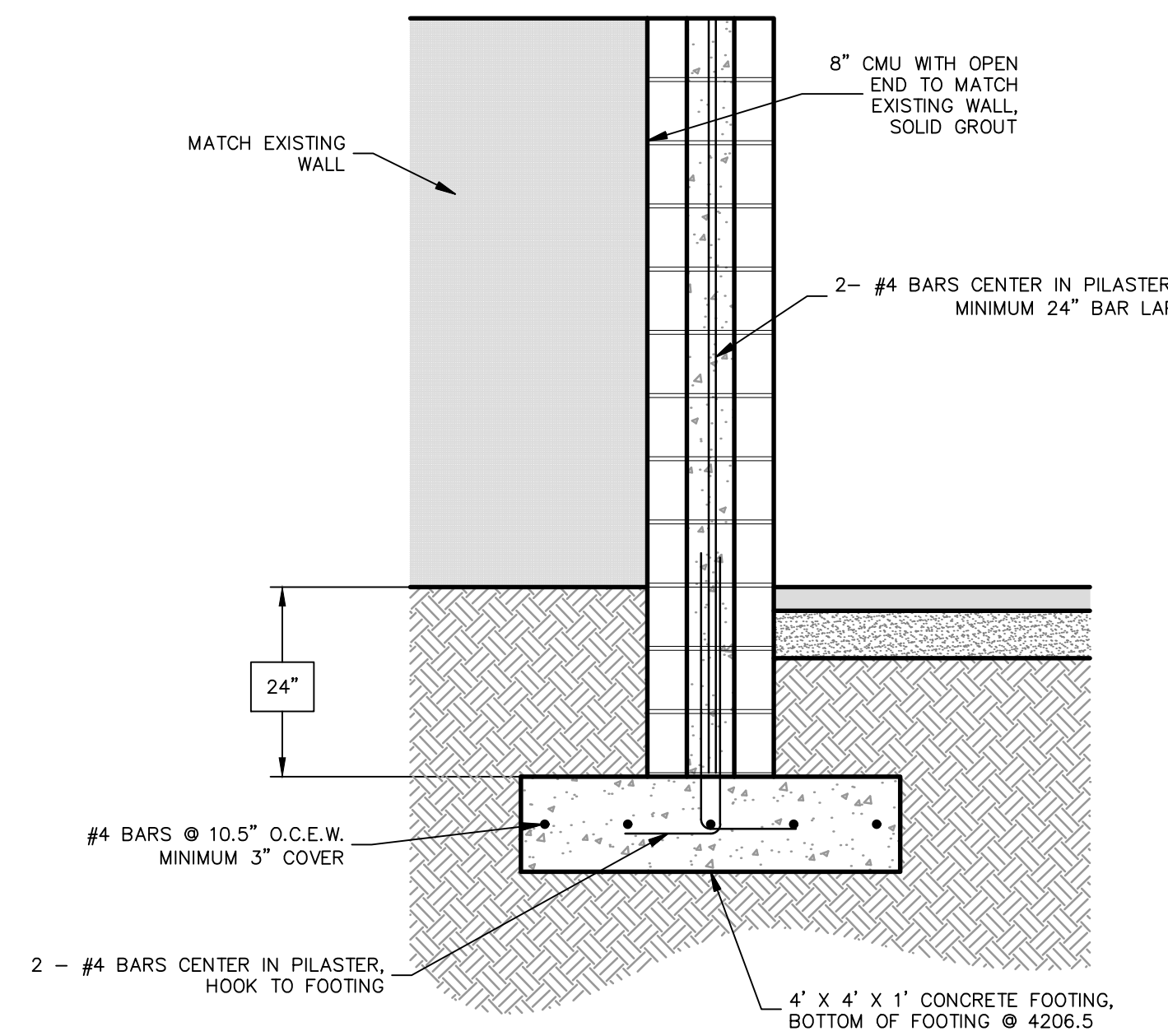
**TYPICAL DRIVEWAY SECTION (B)**  
NO SCALE



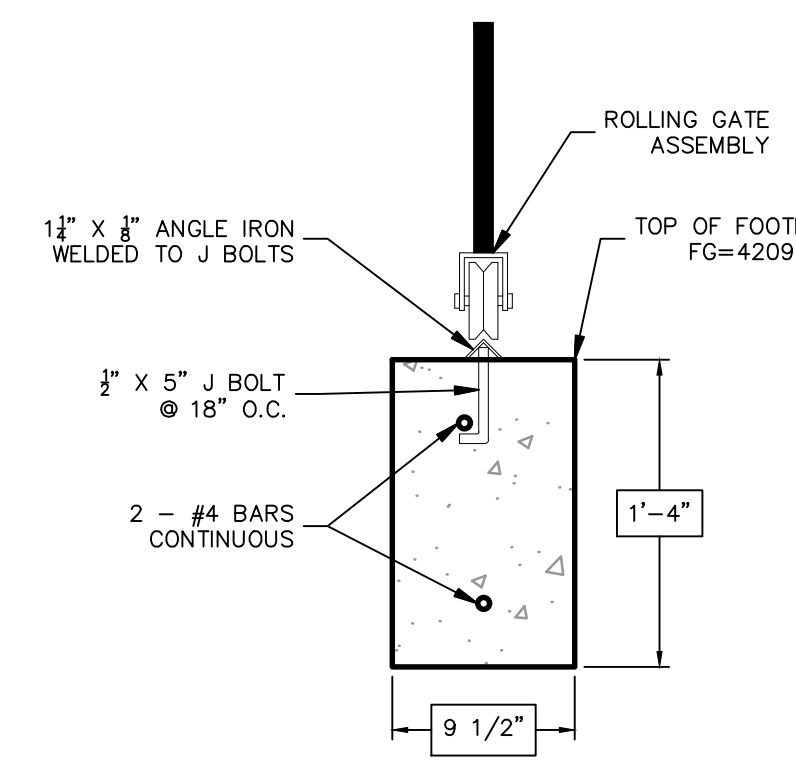
**LOOP DETECTOR/GATE FOOTING (C)**  
NO SCALE



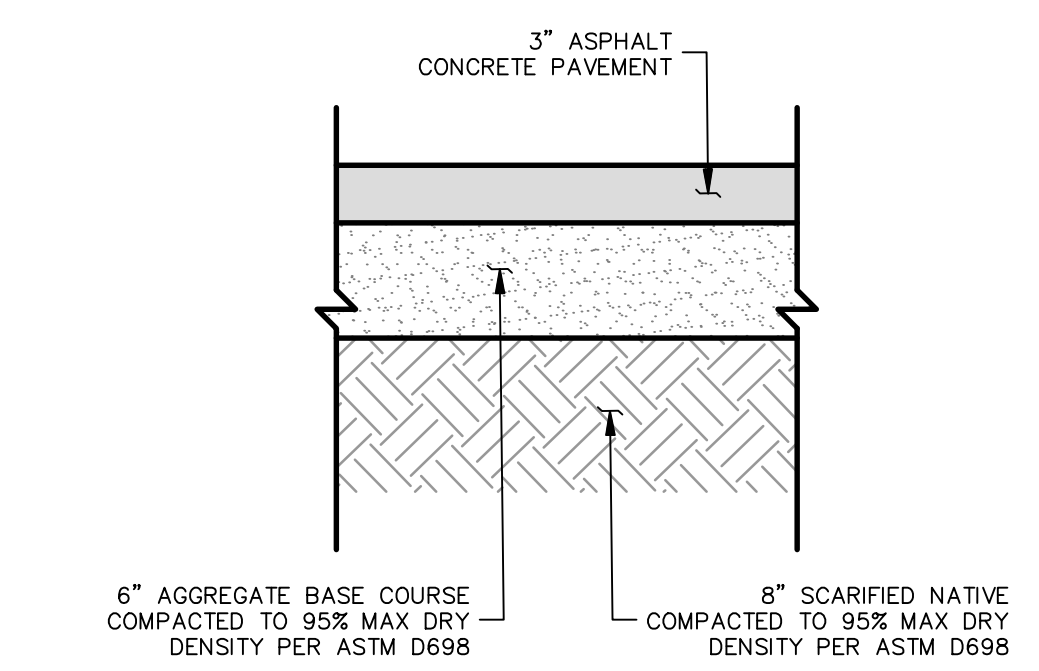
**GATE GUIDE POSTS (F)**  
NO SCALE



**PILASTER DETAIL (A)**  
NO SCALE



**GATE TRACK FOOTING (D)**  
NO SCALE



**GATE AREA PAVEMENT SECTION (E)**  
NO SCALE



**GATE DETAIL (G)**  
NO SCALE

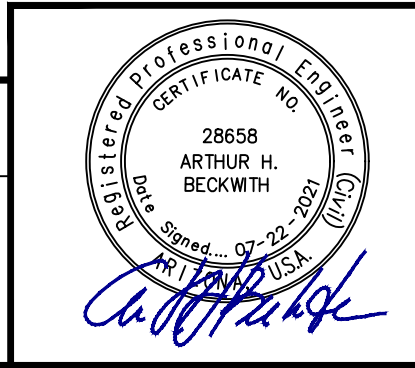
NOTE: CONTRACTOR TO PROVIDE GATE SUBMITTAL FOR APPROVAL PRIOR TO CONSTRUCTION

REVISIONS			
NO.	DESCRIPTION	DATE	BY

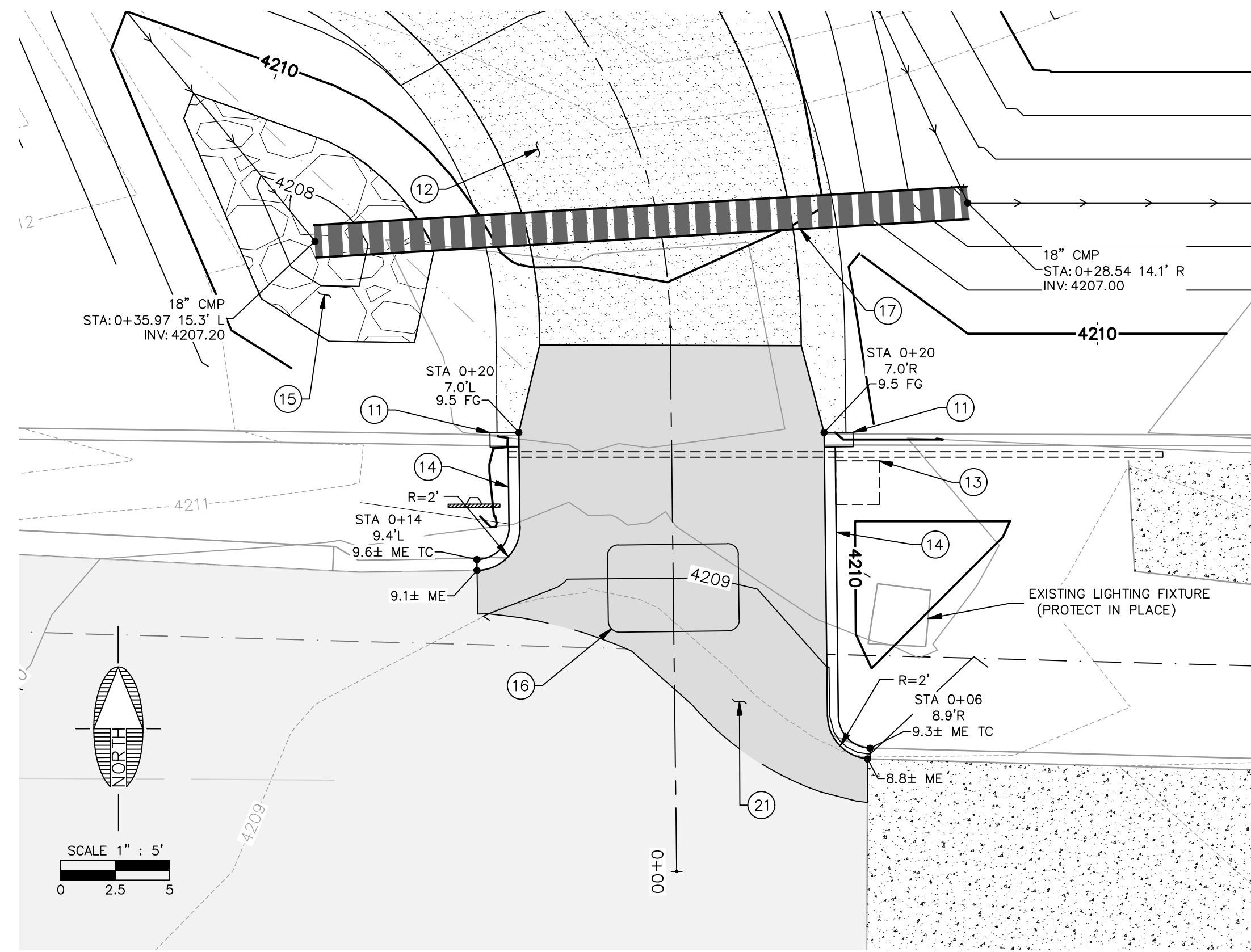
**SWI**  
 Shephard Wesnitzer, Inc.  
 75 Kallaf Place  
 Sedona, AZ 86336  
 928.282.1061  
 928.282.2058 fax  
 www.swiaz.com

JOB NO:	20234
DATE:	JUL 21
SCALE:	AS SHOWN
DRAWN:	EGM
DESIGN:	AHB
CHECKED:	AHB

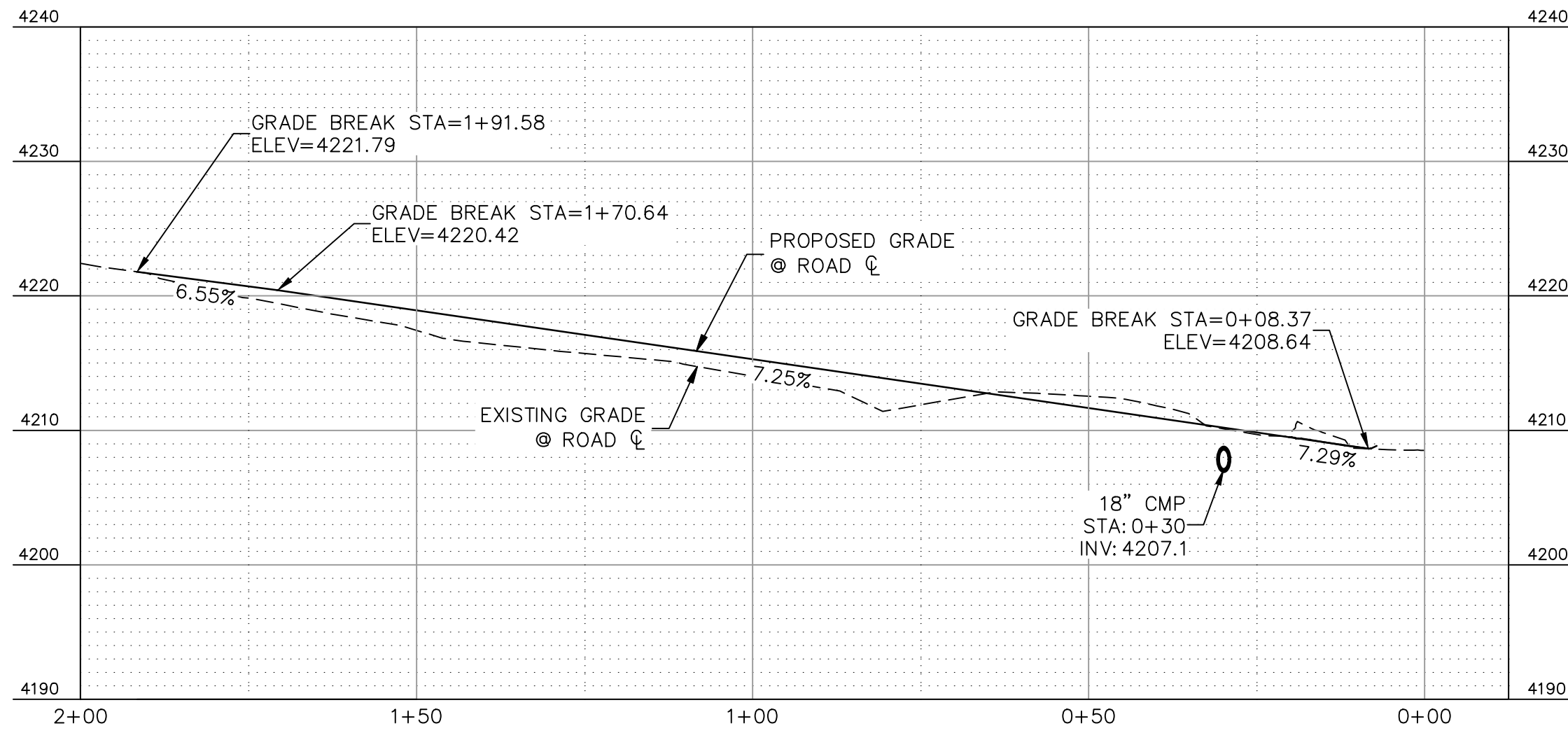
LOS ABRIGADOS DRIVEWAY  
 SEDONA ARIZONA  
**NOTES & DETAILS**



DRAWING NO.	
C2	
SHT NO.	OF
2	3



GATE AREA DETAIL



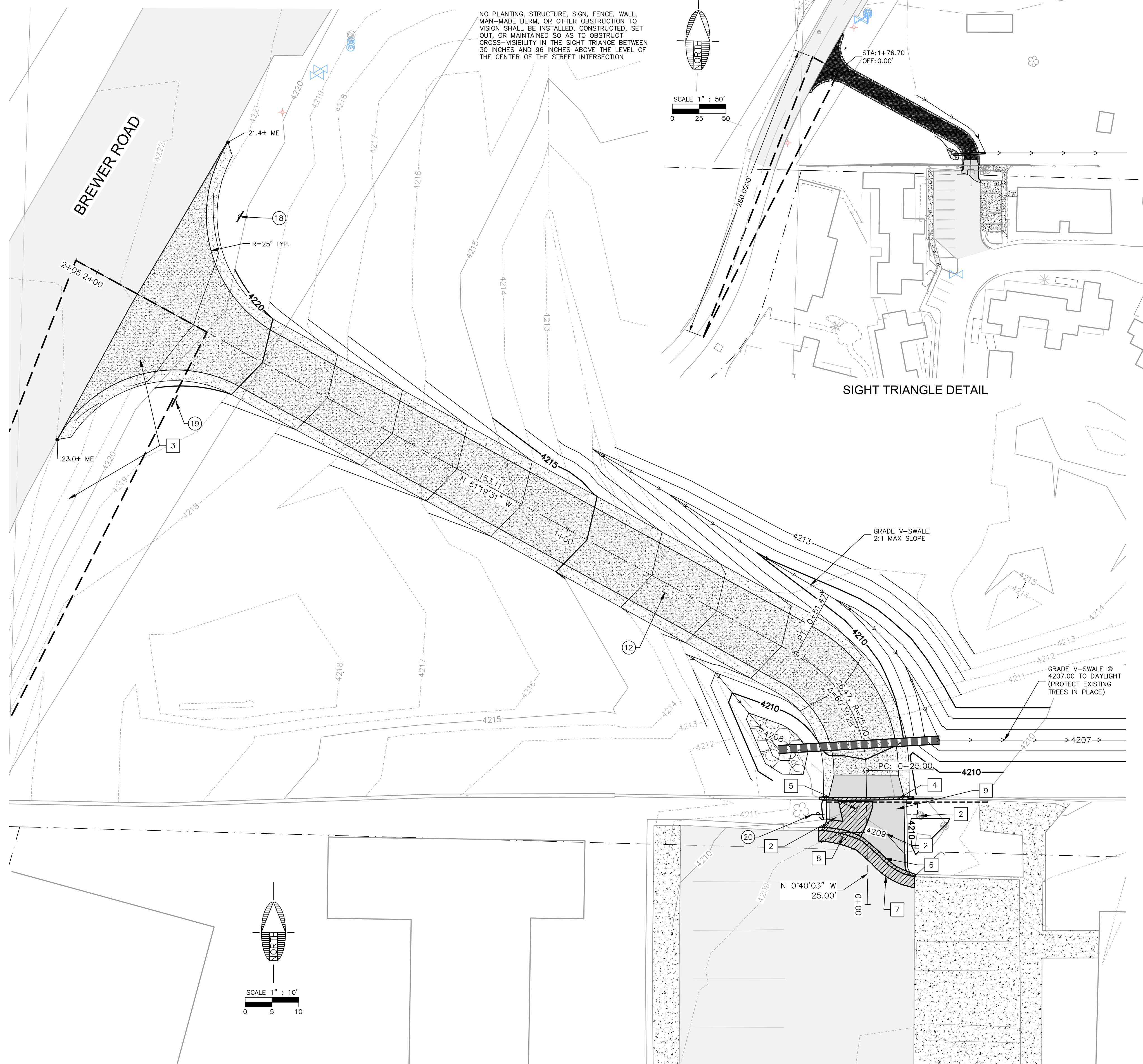
DRIVEWAY PROFILE

DEMOLITION NOTES

- 1 (1 LS) CLEAR AND GRUB
- 2 (1 LS) REMOVE AND DISPOSE OF EXISTING VEGETATION
- 3 (1 EA.) REMOVE AND RELOCATE EXISTING SPEED LIMIT SIGN
- 4 (26 L.F.) REMOVE AND DISPOSE OF EXISTING WALL, REMOVE TO NEAREST PILASTER
- 5 (35 S.F.) REMOVE AND DISPOSE OF GROUTED RIPRAP
- 6 (22 L.F.) REMOVE AND DISPOSE OF EXISTING CURB
- 7 (22 L.F.) SAWCUT 2' FROM PAVEMENT EDGE
- 8 (41 S.F.) REMOVE AND DISPOSE OF EXISTING PAVEMENT
- 9 (1 EA.) REMOVE AND DISPOSE OF STUMP

CONSTRUCTION NOTES

- EARTHWORK: CUT = 130 C.Y. ±  
FILL = 110 C.Y. ±
- 10 (1 LS) SUBGRADE PREPARATION
  - 11 (2 EA.) CONSTRUCT PILASTER PER DETAIL 'A' ON DWG C2. CONNECT EXISTING WALL TO NEW PILASTER.
  - 12 (336 S.Y.) CONSTRUCT DRIVEWAY SECTION PER DETAIL 'B' ON DWG C2
  - 13 (1 EA.) INSTALL 15'x6" AUTOMATIC SLIDING GATE PER DETAILS 'C', 'D', 'F', AND 'G' ON DWG C2
  - 14 (17 L.F.) CONSTRUCT SINGLE CURB PER M.A.G. STANDARD DETAIL 222 TYPE 'B'
  - 15 (78 S.F.) INSTALL 12" THICK LAYER OF RIP RAP, D50=6" AT BASIN BOTTOM
  - 16 (1 EA.) INSTALL LOOP DETECTOR PER DETAIL 'C' ON DWG C2
  - 17 (30 L.F.) INSTALL 18" CMP PER M.A.G. SPEC 618
  - 18 (1 EA.) INSTALL STOP SIGN
  - 19 (1 EA.) INSTALL DO NOT ENTER SIGN
  - 20 (1 EA.) INSTALL BREWER ROAD EXIT ONLY SIGN
  - 21 (26 S.Y.) CONSTRUCT ASPHALT PAVEMENT SECTION PER DETAIL 'E' ON DWG C2



SIGHT TRIANGLE DETAIL

DRIVEWAY PROFILE

DEMOLITION NOTES

- 1 (1 LS) CLEAR AND GRUB
- 2 (1 LS) REMOVE AND DISPOSE OF EXISTING VEGETATION
- 3 (1 EA.) REMOVE AND RELOCATE EXISTING SPEED LIMIT SIGN
- 4 (26 L.F.) REMOVE AND DISPOSE OF EXISTING WALL, REMOVE TO NEAREST PILASTER
- 5 (35 S.F.) REMOVE AND DISPOSE OF GROUTED RIPRAP
- 6 (22 L.F.) REMOVE AND DISPOSE OF EXISTING CURB
- 7 (22 L.F.) SAWCUT 2' FROM PAVEMENT EDGE
- 8 (41 S.F.) REMOVE AND DISPOSE OF EXISTING PAVEMENT
- 9 (1 EA.) REMOVE AND DISPOSE OF STUMP

CONSTRUCTION NOTES

- EARTHWORK: CUT = 130 C.Y. ±  
FILL = 110 C.Y. ±
- 10 (1 LS) SUBGRADE PREPARATION
  - 11 (2 EA.) CONSTRUCT PILASTER PER DETAIL 'A' ON DWG C2. CONNECT EXISTING WALL TO NEW PILASTER.
  - 12 (336 S.Y.) CONSTRUCT DRIVEWAY SECTION PER DETAIL 'B' ON DWG C2
  - 13 (1 EA.) INSTALL 15'x6" AUTOMATIC SLIDING GATE PER DETAILS 'C', 'D', 'F', AND 'G' ON DWG C2
  - 14 (17 L.F.) CONSTRUCT SINGLE CURB PER M.A.G. STANDARD DETAIL 222 TYPE 'B'
  - 15 (78 S.F.) INSTALL 12" THICK LAYER OF RIP RAP, D50=6" AT BASIN BOTTOM
  - 16 (1 EA.) INSTALL LOOP DETECTOR PER DETAIL 'C' ON DWG C2
  - 17 (30 L.F.) INSTALL 18" CMP PER M.A.G. SPEC 618
  - 18 (1 EA.) INSTALL STOP SIGN
  - 19 (1 EA.) INSTALL DO NOT ENTER SIGN
  - 20 (1 EA.) INSTALL BREWER ROAD EXIT ONLY SIGN
  - 21 (26 S.Y.) CONSTRUCT ASPHALT PAVEMENT SECTION PER DETAIL 'E' ON DWG C2

REVISIONS			
NO.	DESCRIPTION	DATE	BY

JOB NO:	20234
DATE:	JUL 21
SCALE:	AS SHOWN
DRAWN:	EGM
DESIGN:	AHB
CHECKED:	AHB

