



AREA MAP

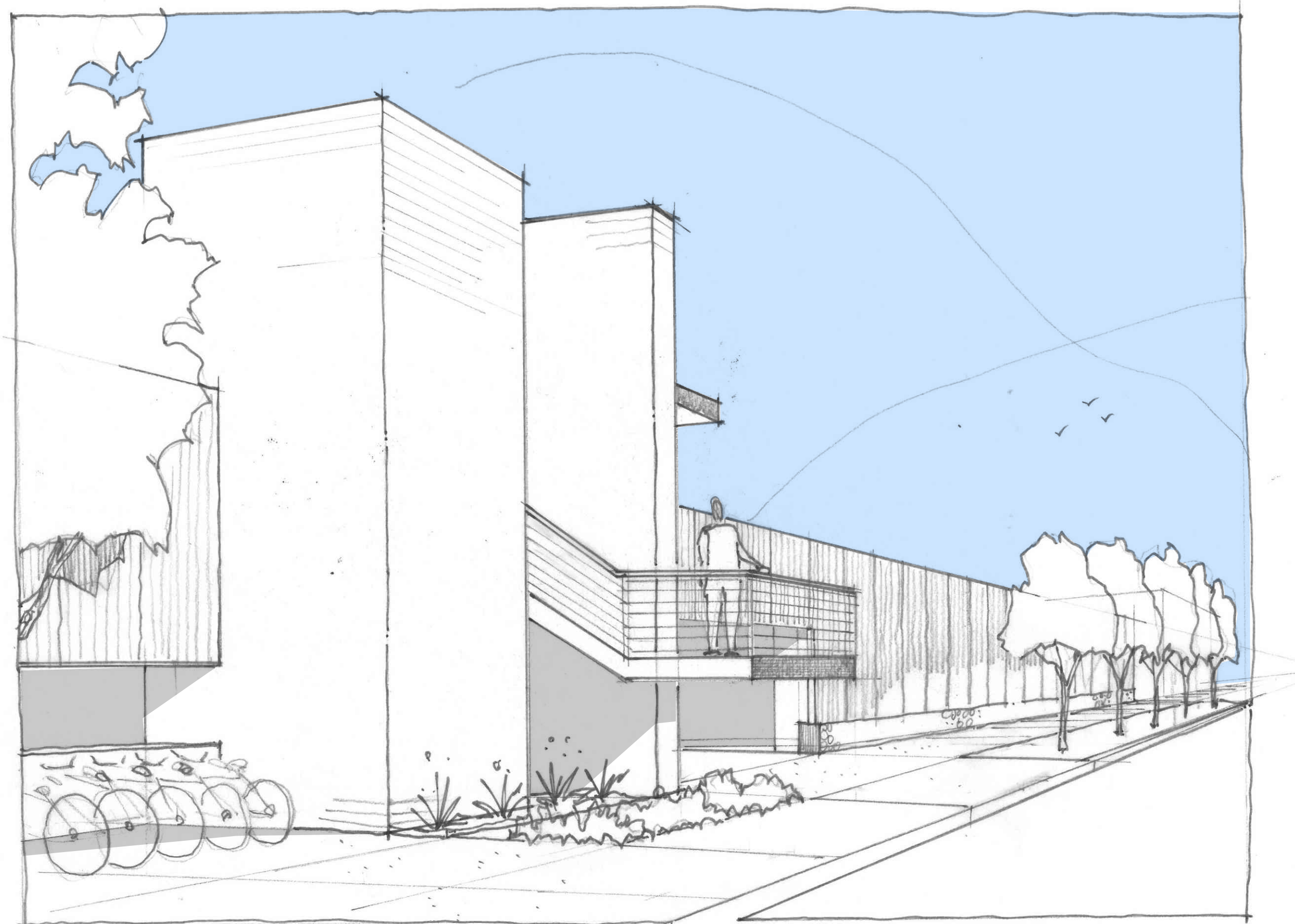
NORTH

PRELIMINARY 20 OCT. 2021

gabor lorant architects

3326 n. 3rd avenue suite 200
phoenix, arizona 85013
tel: 602.667.9090
fax: 602.667.9133
gaborlorant.com





View to East along Forest Road



View to West along Forest Road



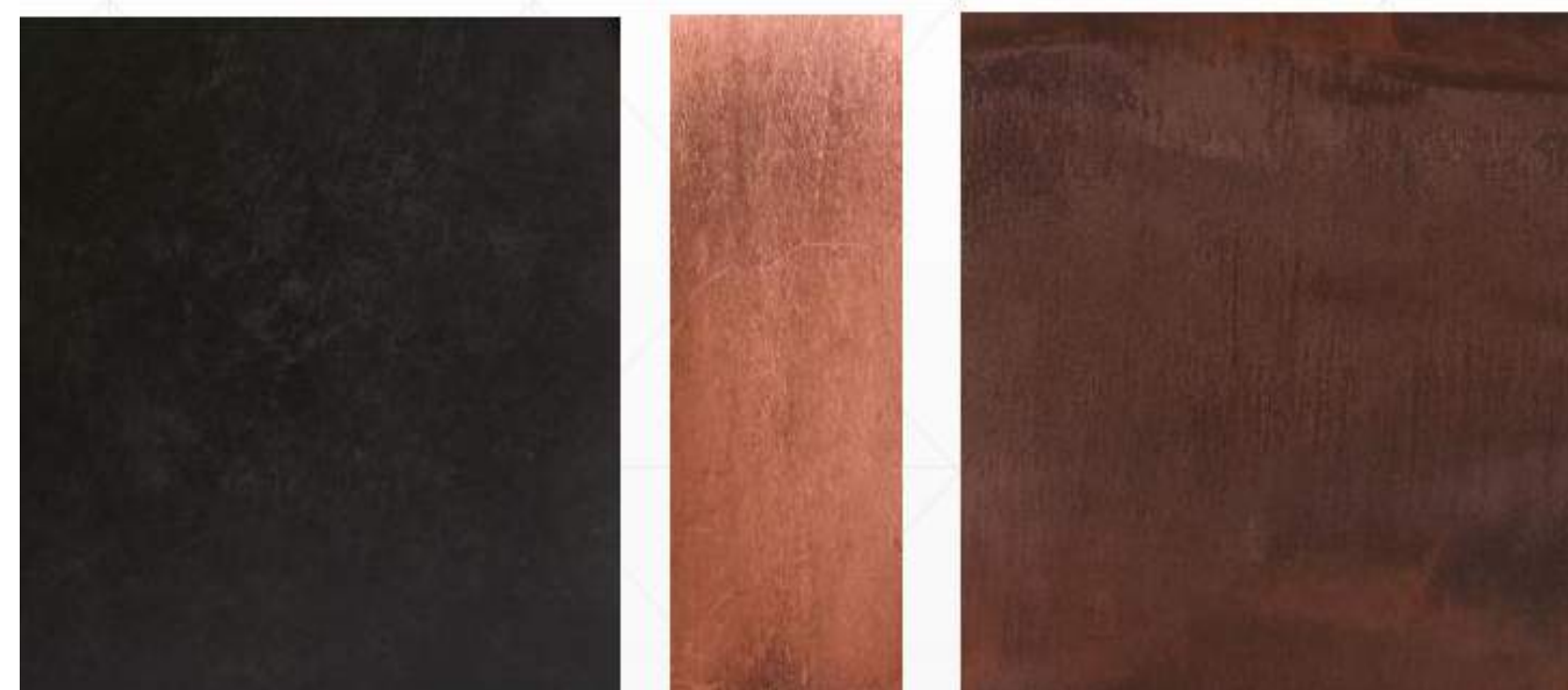
Southwest Corner



Southwest Corner



View to East along Forest Road

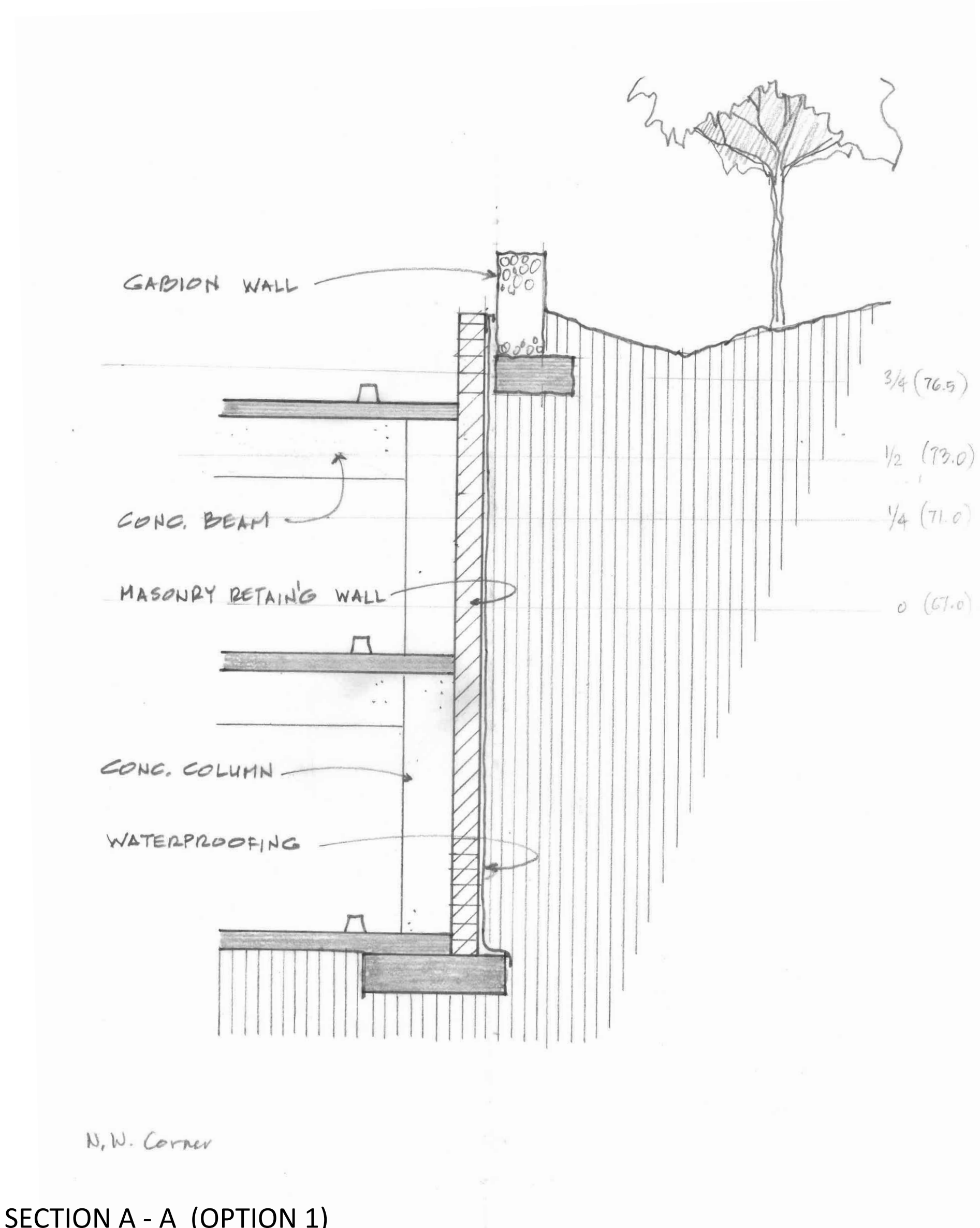


PRELIMINARY 20 OCT. 2021

gabor lorant architects

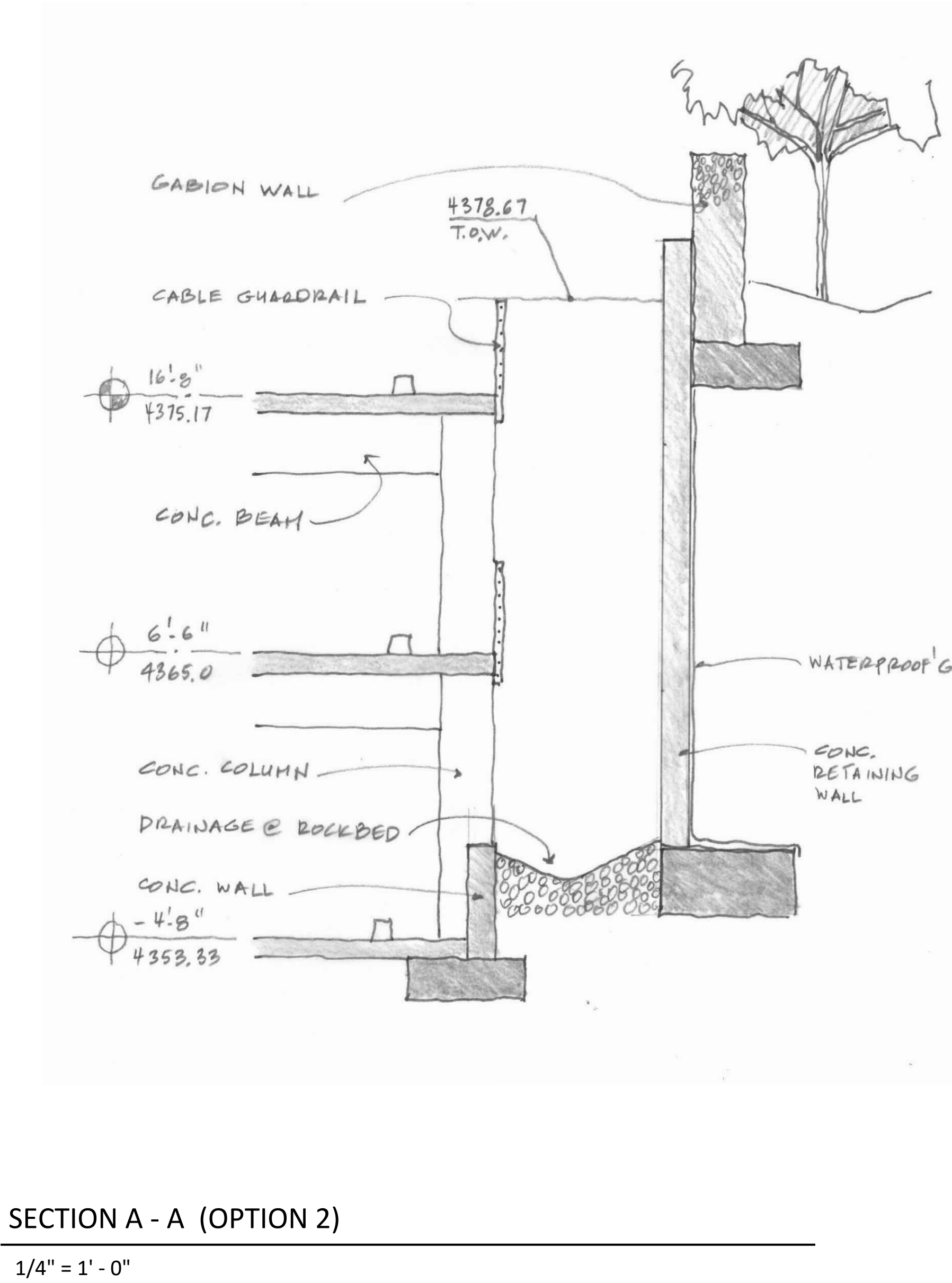
3326 n. 3rd avenue suite 200
phoenix, arizona 85013
tel: 602.667.9090
fax: 602.667.9133
gaborlorant.com





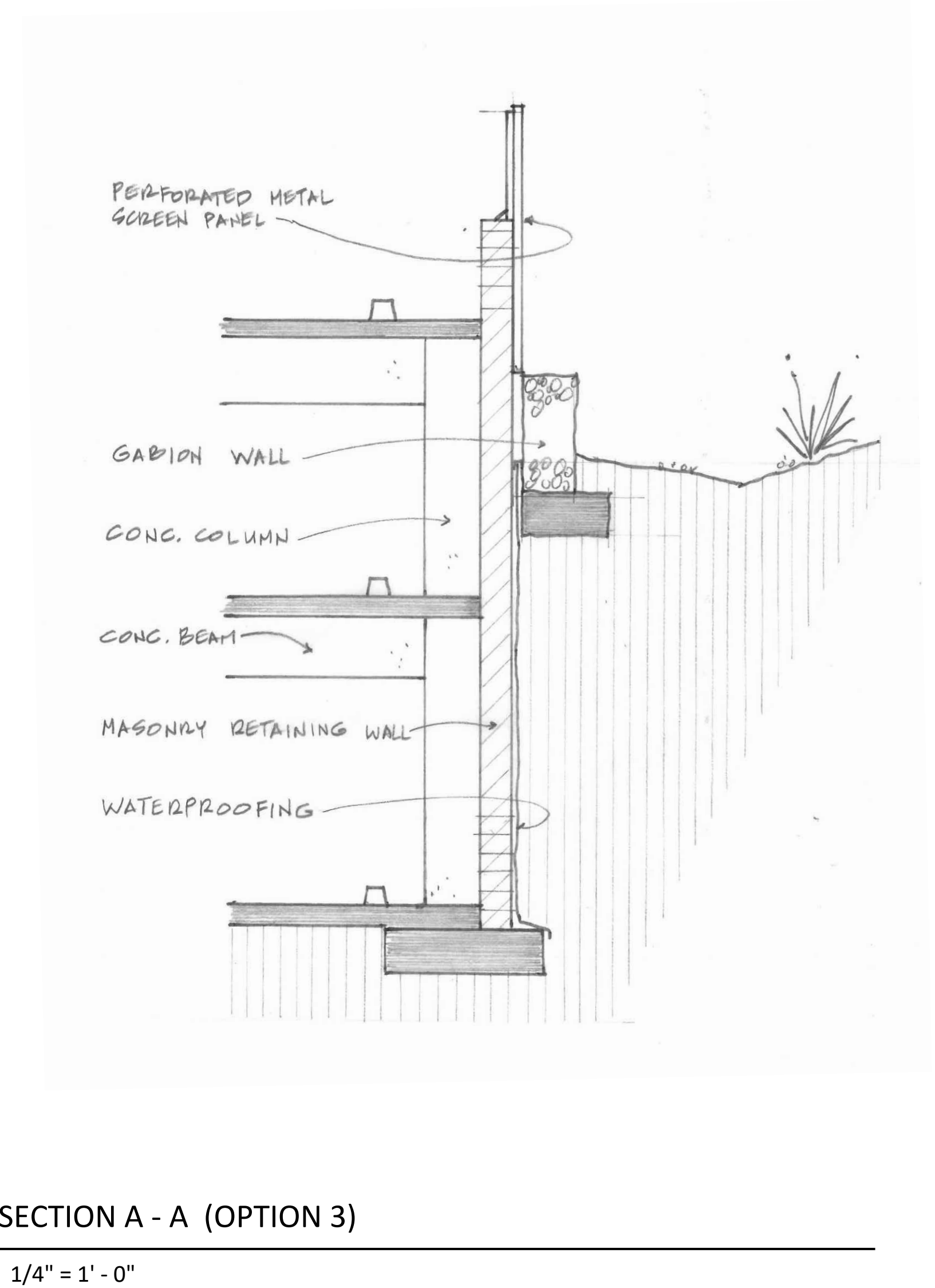
SECTION A - A (OPTION 1)

1/4" = 1' - 0"



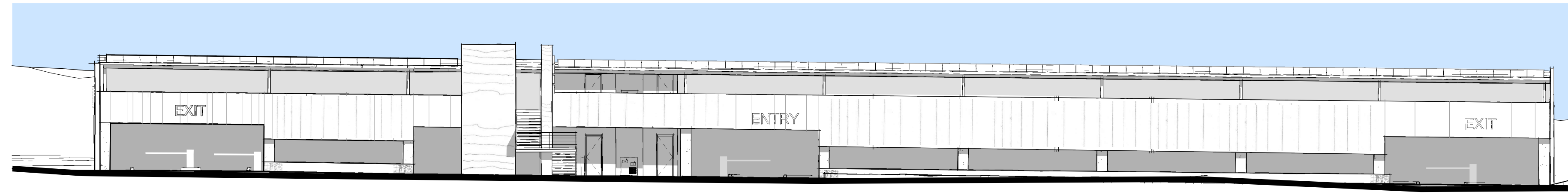
SECTION A - A (OPTION 2)

1/4" = 1' - 0"

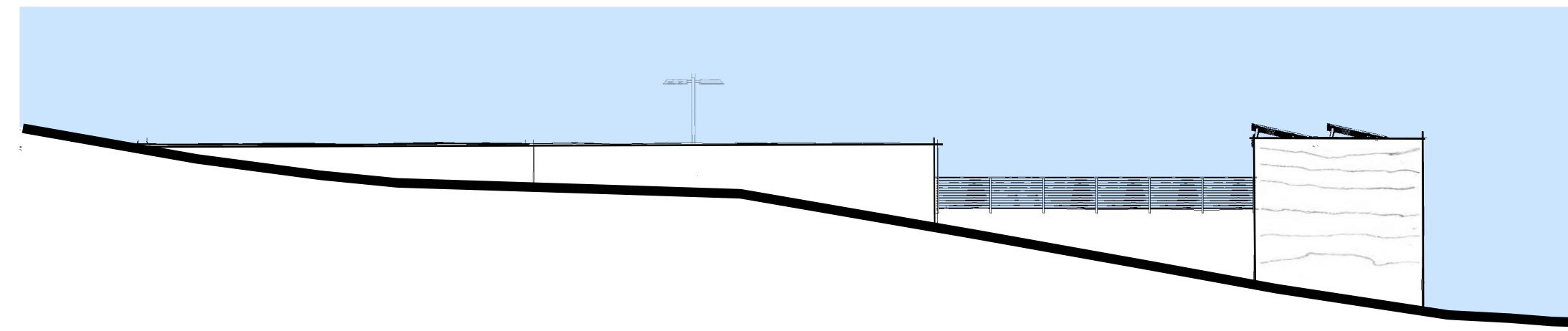


SECTION A - A (OPTION 3)

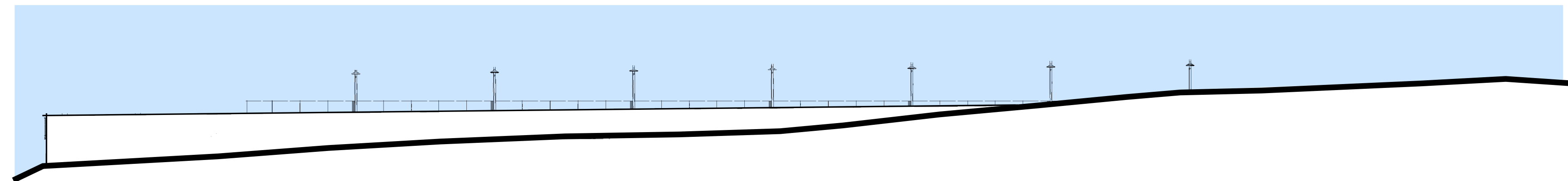
1/4" = 1' - 0"



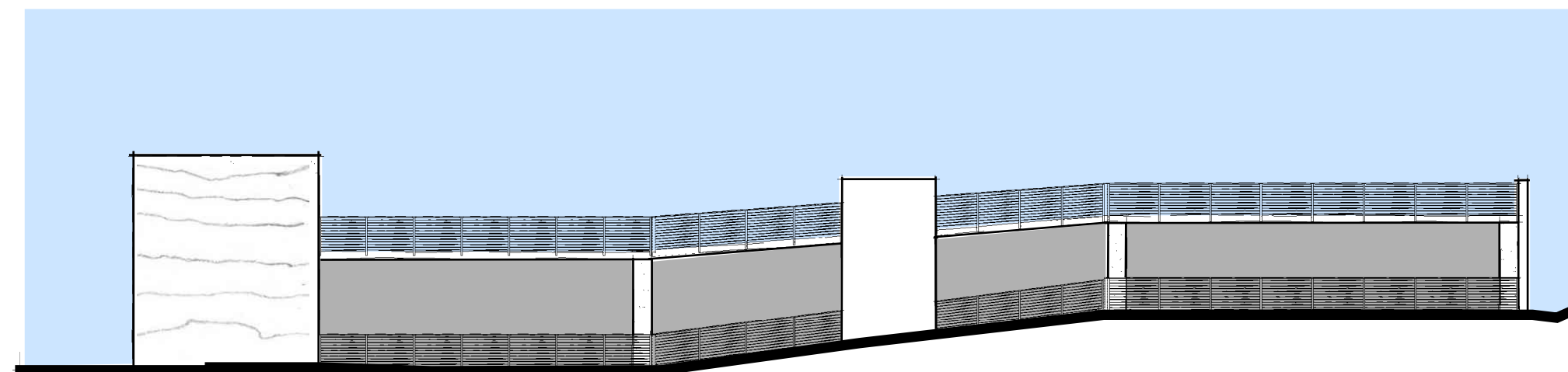
SOUTH - BUILDING ELEVATION
1/16" = 1'-0"



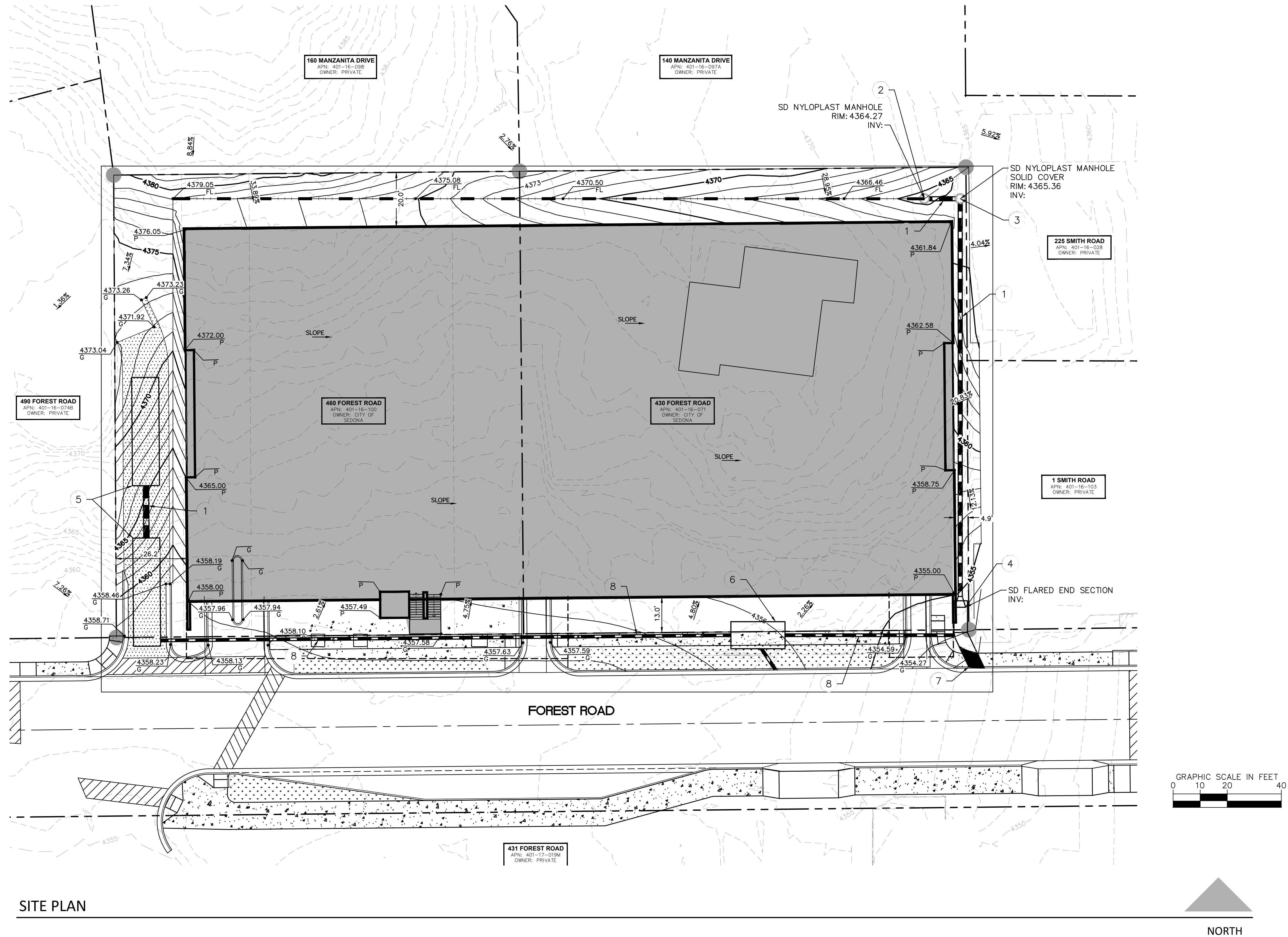
WEST - BUILDING ELEVATION
1/16" = 1'-0"



NORTH - BUILDING ELEVATION
1/16" = 1'-0"



EAST - BUILDING ELEVATION
1/16" = 1'-0"



SITE PLAN

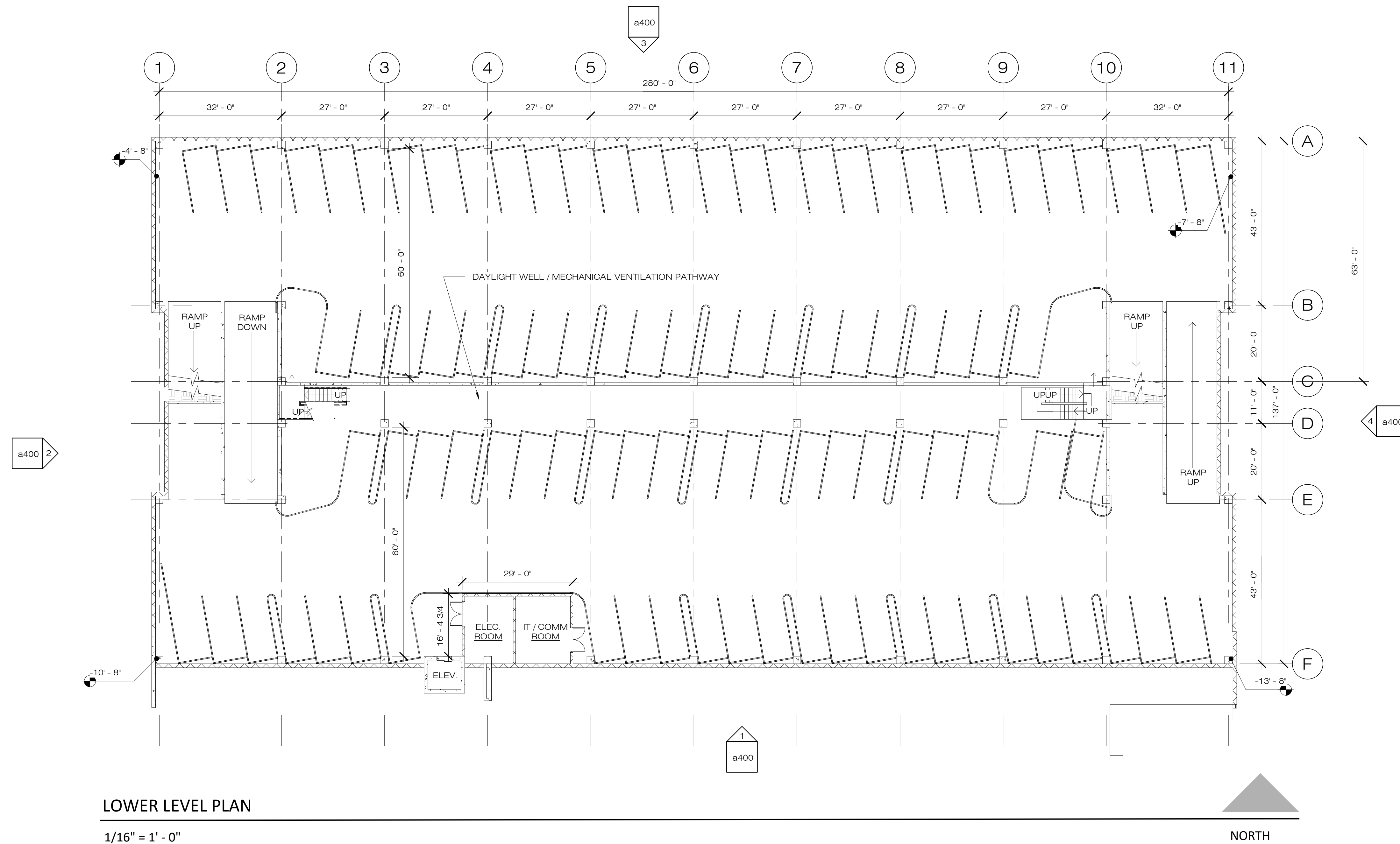
Kimley»Horn

gabor lorant architects

© 2020 KIMLEY-HORN AND ASSOCIATES, INC.
201 NORTH MONTEZUMA SUITE 206 PRESCOTT ARIZONA, 86301
PHONE: 928-458-7121
WWW.KIMLEY-HORN.COM

3326 n. 3rd avenue suite 200
phoenix, arizona 85013
tel: 602.667.9090
fax: 602.667.9133
gaborlorant.com





LOWER LEVEL PLAN

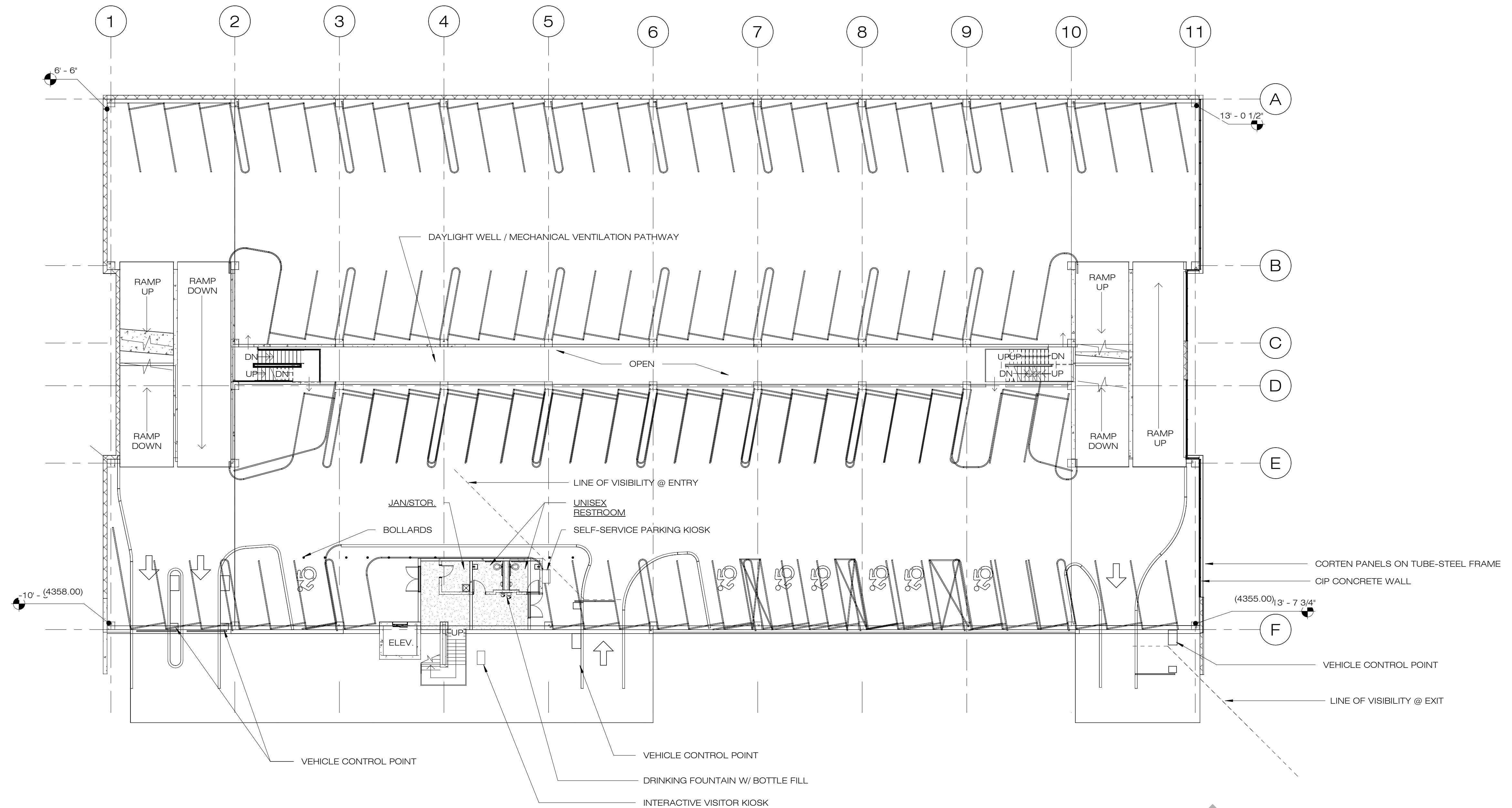
1/16" = 1' - 0"

PRELIMINARY 20 OCT. 2021

gabor lorant architects

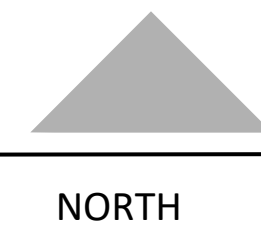
3326 n. 3rd avenue suite 200
phoenix, arizona 85013
tel: 602.667.9090
fax: 602.667.9133
gaborlorant.com

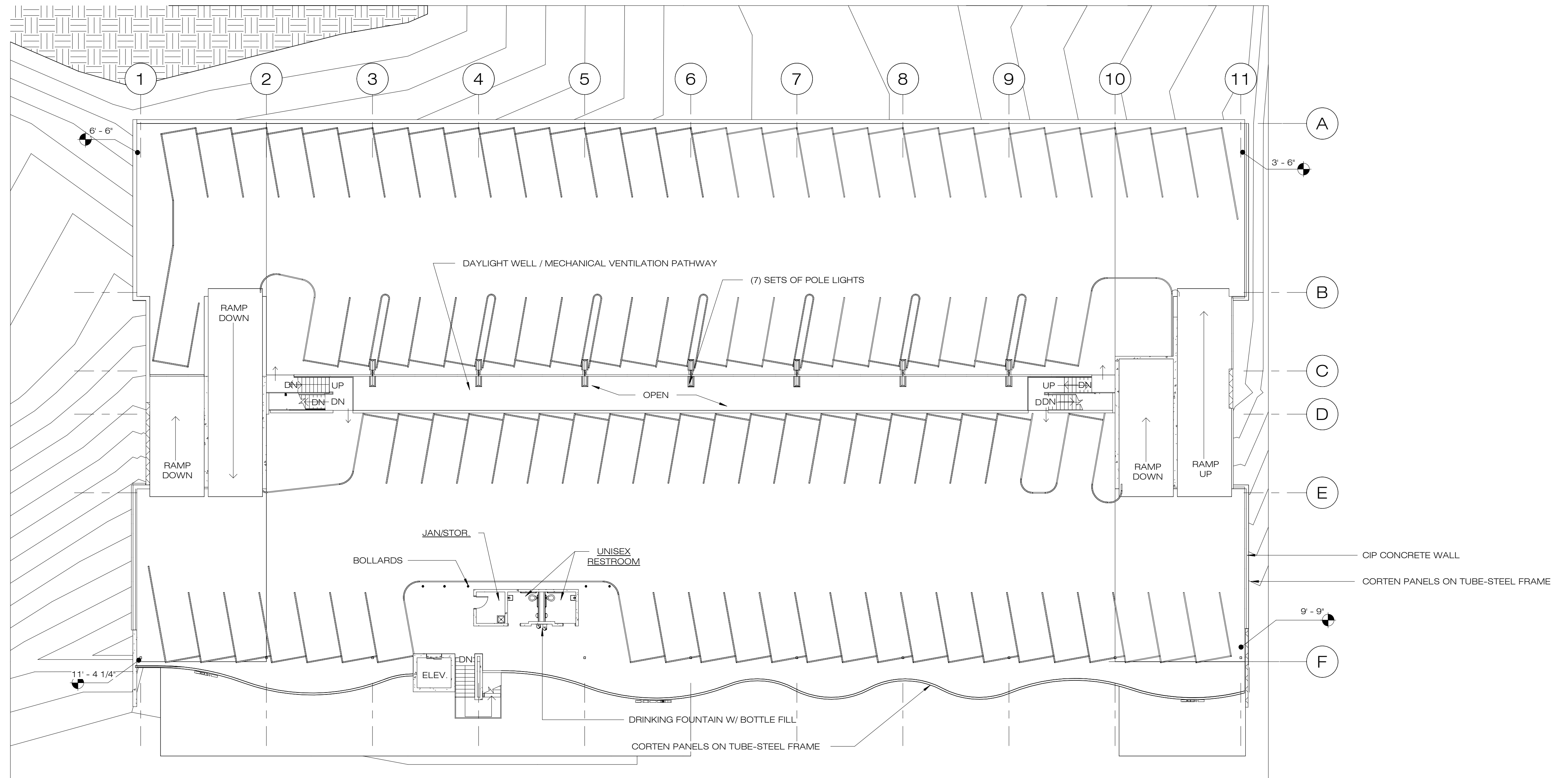




GROUND LEVEL PLAN

1/16" = 1' - 0"





UPPER LEVEL PLAN

1/16" = 1' - 0"

