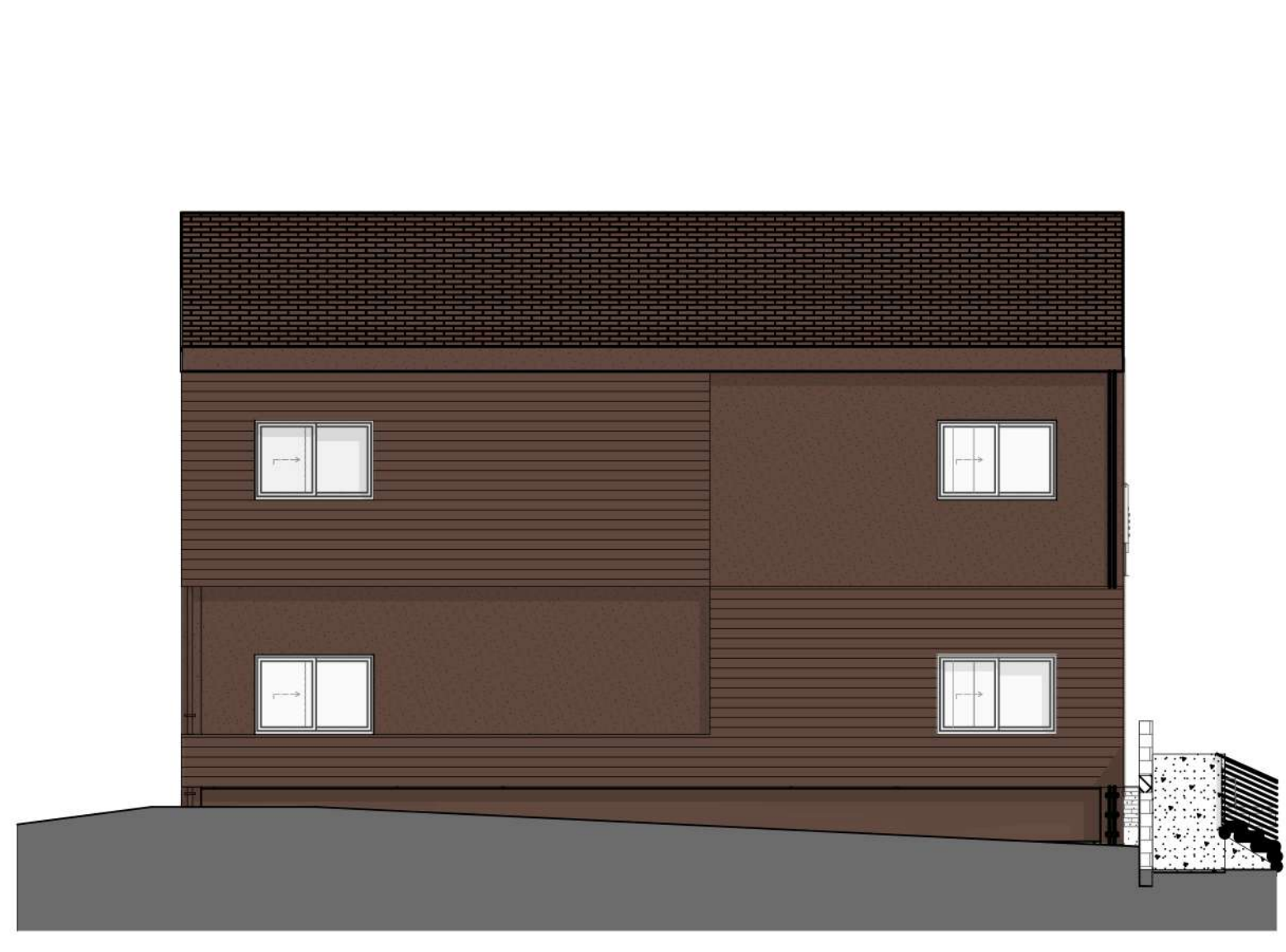




1 WEST ELEVATION BLDG 1 & 3
 0 4' 8' 16'



2 SOUTH & NORTH ELEVATION BLDG 3
 0 4' 8' 16'



3 NORTH ELEVATION BLDG 1
 0 4' 8' 16'



4 EAST ELEVATION BLDG 2
 0 4' 8' 16'

SECTION / ELEVATION LEGEND

- PAINTED STUCCO
DUNN EDWARD - PAINT COLOR
NORTHERN TERRITORY-DEA15
LRV 7
- PAINTED STUCCO
DUNN EDWARD - PAINT COLOR
SANDPII-DE6118
LRV 21
- PAINTED STUCCO
DUNN EDWARD - PAINT COLOR
DARK ENGINE - DE6350
LRV 5
- PAINTED STUCCO
DUNN EDWARD - PAINT COLOR
RHINOCEROS - DE6327
LRV 18
- GAF - TIMBERLINE® HDZ™
RS SHINGLES
COLOR- HICKORY
- GAF - TIMBERLINE® HDZ™
RS SHINGLES
COLOR- CHARCOAL
- CERTAINTED - VINYL SIDING
MODEL- MONOGRAM
COLOR- ESPRESSO
- CERTAINTED - VINYL SIDING
MODEL- MONOGRAM
COLOR- SLATE
- 42" HIGH GUARD RAIL

SUNSET LOFTS, LLC
 15010 N. 78th Way, Suite 109, Scottsdale, AZ 85250

SEDONA SUNSET
 220 S. Sunset Drive | SEDONA, AZ 86336

Caroline A. Lobo
 REGISTERED ARCHITECT
 52456
 CAROLINE A. LOBO
 ARCHITECT
 ARIZONA, U.S.A.
 expires 06/30/23

SUOLL architects
 ARCHITECTS

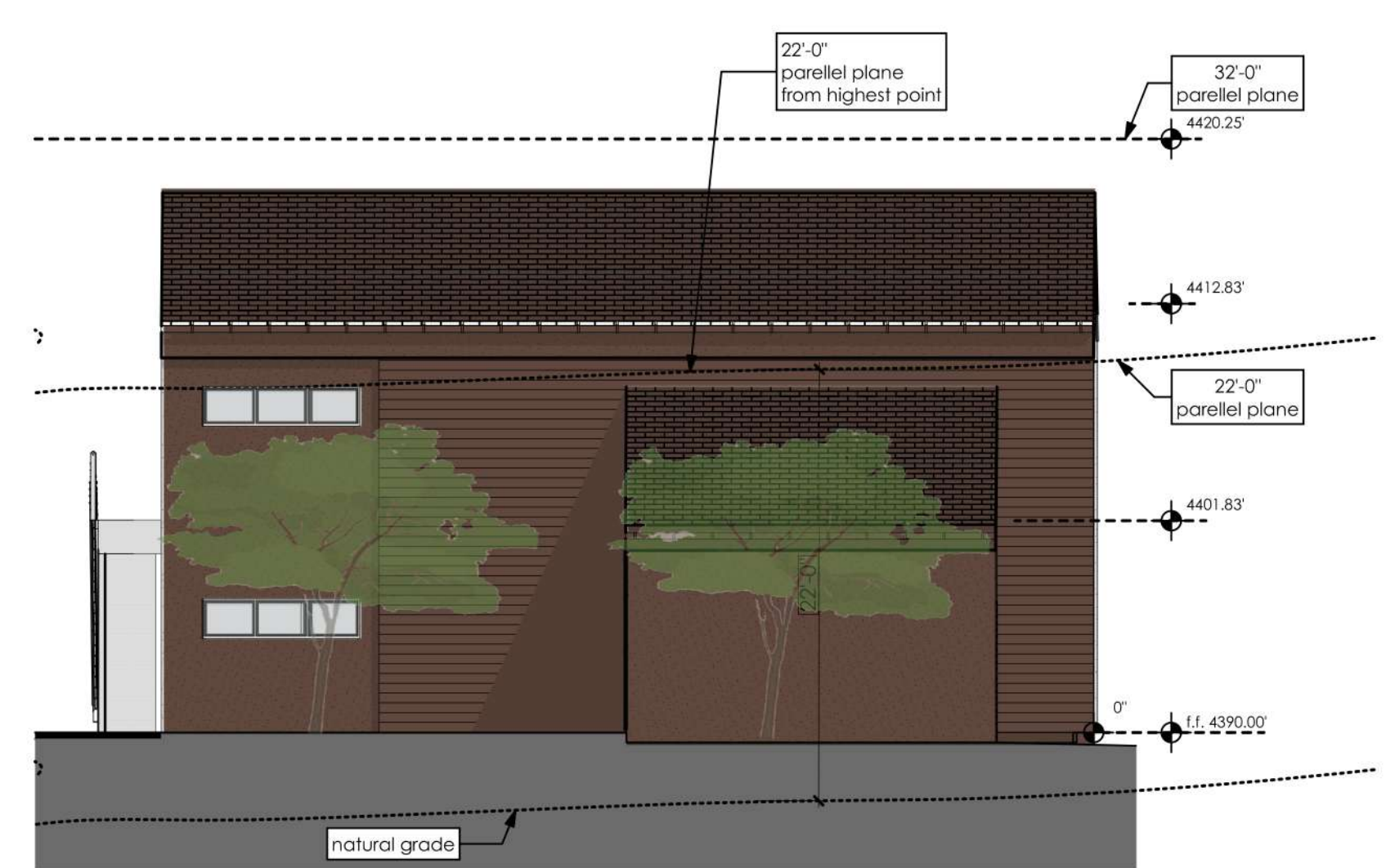
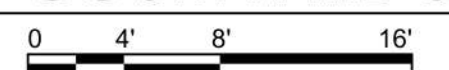
PROJECT NUMBER: 21_005
 DATE OF ISSUE: 05.03.22

building elevations (color)

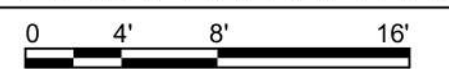
A-201



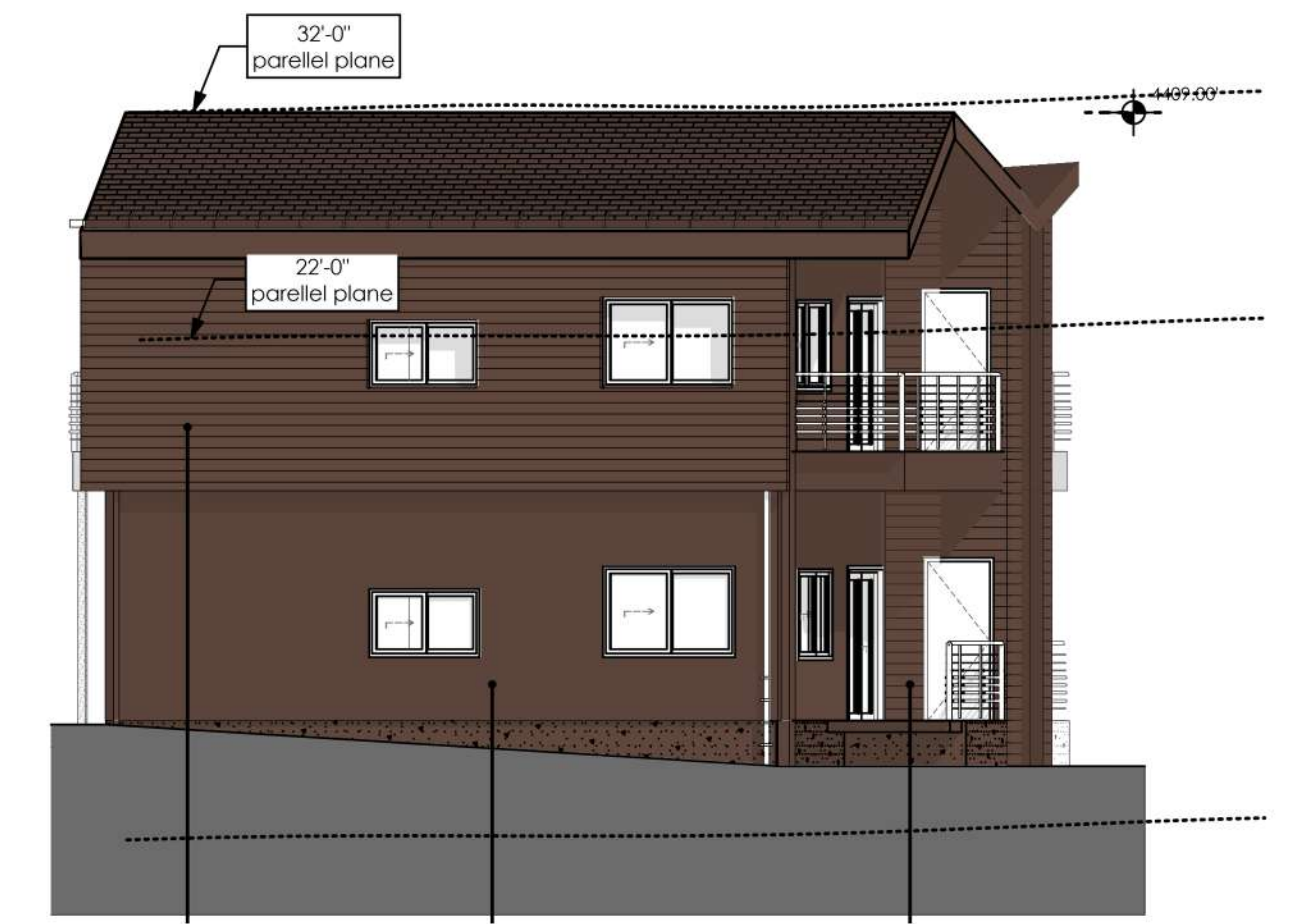
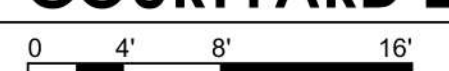
1 COURTYARD SOUTH ELEVATION



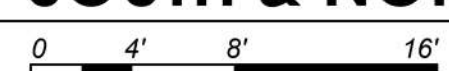
2 EAST ELEVATION BLDG 1



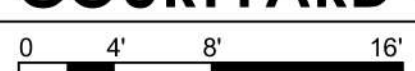
3 COURTYARD EAST ELEVATION



2 SOUTH & NORTH ELEVATION BLDG 2



4 COURTYARD WEST ELEVATION



SECTION / ELEVATION LEGEND

- PAINTED STUCCO
DUNN EDWARD - PAINT COLOR
NORTHERN TERRITORY-DEA15
LRV 7
- PAINTED STUCCO
DUNN EDWARD - PAINT COLOR
SANDPIT-DE6118
LRV 21
- PAINTED STUCCO
DUNN EDWARD - PAINT COLOR
DARK ENGINE - DE6350
LRV 5
- PAINTED STUCCO
DUNN EDWARD - PAINT COLOR
RHINOCEROS - DE6327
LRV 18
- GAF - TIMBERLINE® HDZ™
RS SHINGLES
COLOR- HICKORY
- GAF - TIMBERLINE® HDZ™
RS SHINGLES
COLOR- CHARCOAL
- CERTAINTEEED - VINYL SIDING
MODEL- MONOGRAM
COLOR- ESPRESSO
- CERTAINTEEED - VINYL SIDING
MODEL- MONOGRAM
COLOR- SLATE
- 42" HIGH GUARD RAIL

SUNSET LOFTS, LLC
15010 N. 78th Way, Suite 109, Scottsdale, AZ 85250

SEDONA SUNSET
220 S. Sunset Drive | SEDONA, AZ 86336

Caroline A. Lobo

52456
CAROLINE A. LOBO
REGISTERED ARCHITECT
ARIZONA, U.S.A.
expires 06/30/23

SUOLL architects

PROJECT NUMBER: 21_005
DATE OF ISSUE: 05.03.22

building elevations (color)
A-202