

**Exterior Lighting Application**  
 Commercial and Multi-Family  
 See LDC Section 5.8: Exterior Lighting



**City Of Sedona**  
**Community Development Department**  
 102 Roadrunner Drive Sedona, AZ 86336  
 (928) 282-1154 • [www.sedonaz.gov/cd](http://www.sedonaz.gov/cd)

**Applicant and Permit Information**

Applicant Name:	John Snickers	Permit #:	
Phone:	928-282-7092	Date Rec'd:	
Email Address:	jsnickers@azwater.com	Initials:	
Action/Staff Initials:	<input type="checkbox"/> Approved <input type="checkbox"/> Denied	Date:	

**Site Identification**

Property Address/Location:	135 Roadrunner Drive
Parcel Number	408-02-108F & 108H
Business Name (If applicable):	Arizona Water Company Public Utility Facility

**Lumen Information**

Gross acres of entire site:	1.1	Acres for Public Right-of-Way:	
Net Acreage of Site:		x 70,000 = Total initial lumens permitted*	

*\*Total outdoor light output shall not exceed 70,000 initial lumens per net acre for all development except single-family residential uses. This cap is not intended to be achieved in all cases or as a design goal. Design goals should be the lowest level of lumens necessary to meet the lighting requirements of the site. Partially shielded light fixtures are limited to a maximum of 3,850 initial lumens per net acre and are counted towards the 70,000 initial lumens per net acre cap.*

**Type of Shielding and Lumens Proposed (See Lumen Calculation Table – page 2)**

Lumens: Fully Shielded Fixtures:	60,243
Lumens: Partially Shielded Fixtures:	0
Total Lumens Proposed:	60,243

**Applicant Signature**

Signature:		Date:	04.18.2022
------------	--	-------	------------

**Exterior Lighting Application**  
 Commercial and Multi-Family  
 See LDC Section 5.8: Exterior Lighting

**Lighting Inventory and Lumen Calculation Table**

- Include a Site Plan identifying all lighting fixtures, keyed to the inventory table.
- Include all new/proposed lighting and all existing lighting.
- Include any lighting proposed for external illumination of signs.
- Attach cut sheets or manufacturer’s product description for all lights. If not available for existing fixtures, include photographs of the fixtures and any additional information to demonstrate compliance with code requirements.
- Attach additional sheets if necessary

*Lighting Classes (See LDC Section 5.8.D(1) for a complete explanation):*

- Class 1: High Activity Areas
- Class 2: Security and Public Safety
- Class 3: Decorative and Accent

*Correlated Color Temperature(CCT)/Kelvin Rating:* A maximum of 4,000K is permitted for all lighting; Class 2 Lighting is limited to a maximum of 2,700K

*Shielding:*

- F: Fully Shielded: Required for most lighting
- P: Partially Shielded: Limited to 3,850 lumens per acre
- U: Unshielded: Only permitted for existing, legal nonconforming lighting

**Site Plan:**  Attached  Provided with plans (Sheet \_\_\_\_\_)

site light pole



wall mounted



Plan Key (ID)*	New or Existing (N or E)	Lighting Class (1, 2, or 3)	CCT/Kelvin Rating	Shielding (F, P, or U)	Initial Lumens	No. of Units	Total Lumens
SA	N	2	2700K	F	2725	10	27,250
SB	N	2	2700K	F	4434	5	22,170
SC	N	2	2700K	F	4223	1	4223
SD	N	2	2700K	F	3300	1	3300
SF	N	2	2700K	F	3300	1	3300
Total Lumens Proposed:							<b>60,243</b>

*\*Plan key identification in first column must correspond to labeling on site plan*



# D-Series Size 0 LED Area Luminaire



Catalog  
Number

Notes

Type

Hit the Tab key or mouse over the page to see all interactive elements.

## Introduction

The modern styling of the D-Series is striking yet unobtrusive - making a bold, progressive statement even as it blends seamlessly with its environment. The D-Series distills the benefits of the latest in LED technology into a high performance, high efficacy, long-life luminaire.

The outstanding photometric performance results in sites with excellent uniformity, greater pole spacing and lower power density. It is ideal for replacing up to 400W metal halide with typical energy savings of 70% and expected service life of over 100,000 hours.

## Specifications

**EPA:** 0.95 ft<sup>2</sup>  
(.09 m<sup>2</sup>)

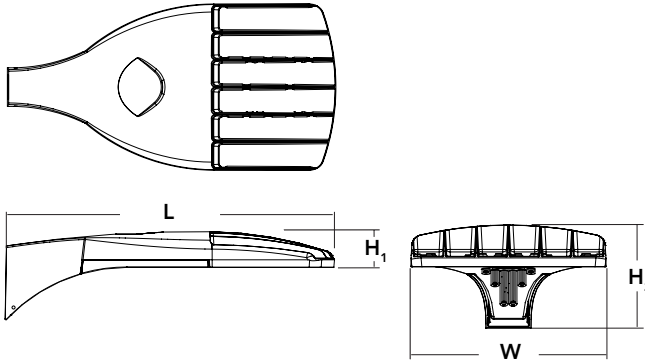
**Length:** 26"  
(66.0 cm)

**Width:** 13"  
(33.0 cm)

**Height<sub>1</sub>:** 3"  
(7.62 cm)

**Height<sub>2</sub>:** 7"  
(17.8 cm)

**Weight (max):** 16 lbs  
(7.25 kg)



## Ordering Information

**EXAMPLE:** DSX0 LED P6 40K T3M MVOLT SPA NLTAIR2 PIRHN DDBXD

DSX0 LED		Color temperature		Distribution		Voltage		Mounting			
Series	LEDs	Color temperature		Distribution		Voltage		Mounting			
DSX0 LED	<b>Forward optics</b>		30K	3000 K	T1S	Type I short (Automotive)	T5S	Type V short <sup>3</sup>	MVOLT	(120V-277V) <sup>5,6</sup>	<b>Shipped included</b> SPA Square pole mounting RPA Round pole mounting <sup>10</sup> WBA Wall bracket <sup>3</sup> SPUMBA Square pole universal mounting adaptor <sup>11</sup> RPUMBA Round pole universal mounting adaptor <sup>11</sup> <b>Shipped separately</b> KMA8 DDBXD U Mast arm mounting bracket adaptor (specify finish) <sup>12</sup>
	P1	P5	40K	4000 K	T2S	Type II short	T5M	Type V medium <sup>3</sup>	XVOLT	(277V-480V) <sup>2,8,9</sup>	
	P2	P6	50K	5000 K	T2M	Type II medium	T5W	Type V wide <sup>3</sup>	120 <sup>6</sup>		
	P3	P7 <sup>1</sup>			T3S	Type III short	BLC	Backlight control <sup>4</sup>	208 <sup>6</sup>		
	P4 <sup>1</sup>				T3M	Type III medium	LCCO	Left corner cutoff <sup>4</sup>	240 <sup>6</sup>		
	<b>Rotated optics</b>				T4M	Type IV medium	RCCO	Right corner cutoff <sup>4</sup>	277 <sup>6</sup>		
	P10 <sup>2</sup>	P12 <sup>2</sup>			TFTM	Forward throw medium			347 <sup>6</sup>		
	P11 <sup>2</sup>	P13 <sup>1,2</sup>			T5VS	Type V very short <sup>3</sup>			480 <sup>6</sup>		

Control options		Other options		Finish (required)			
<b>Shipped installed</b>		<b>Shipped installed</b>		<b>Shipped installed</b>			
NLTAIR2	nLight AIR generation 2 enabled <sup>13,14</sup>	PIR	High/low, motion/ambient sensor, 8-15' mounting height, ambient sensor enabled at 5fc <sup>19,20</sup>	HS	House-side shield <sup>22</sup>	DDBXD	Dark bronze
PIRHN	Network, high/low motion/ambient sensor <sup>15</sup>	PIRHN	High/low, motion/ambient sensor, 15-30' mounting height, ambient sensor enabled at 5fc <sup>19,20</sup>	SF	Single fuse (120, 277, 347V) <sup>6</sup>	DBLXD	Black
PER	NEMA twist-lock receptacle only (control ordered separate) <sup>16</sup>	PIR1FC3V	High/low, motion/ambient sensor, 8-15' mounting height, ambient sensor enabled at 1fc <sup>19,20</sup>	DF	Double fuse (208, 240, 480V) <sup>6</sup>	DNAXD	Natural aluminum
PER5	Five-pin receptacle only (control ordered separate) <sup>16,17</sup>	PIR1FC3V	High/low, motion/ambient sensor, 15-30' mounting height, ambient sensor enabled at 1fc <sup>19,20</sup>	L90	Left rotated optics <sup>2</sup>	DWHXD	White
PER7	Seven-pin receptacle only (leads exit fixture) (control ordered separate) <sup>16,17</sup>	FAO	Field adjustable output <sup>21</sup>	R90	Right rotated optics <sup>2</sup>	DDBTXD	Textured dark bronze
DMG	0-10V dimming extend out back of housing for external control (control ordered separate) <sup>18</sup>			DDL	Diffused drop lens <sup>22</sup>	DBLBXD	Textured black
				HA	50°C ambient operations <sup>1</sup>	DNATXD	Textured natural aluminum
				BAA	Buy America(n) Act Compliant	DWHGXD	Textured white
				<b>Shipped separately</b>			
				BS	Bird spikes <sup>23</sup>		
				EGS	External glare shield		



## Ordering Information

### Accessories

Ordered and shipped separately.

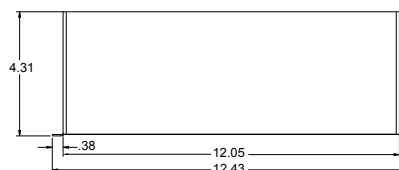
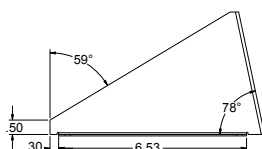
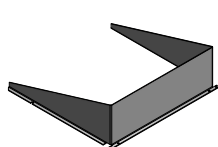
DLL127F 1.5 JU	Photocell - SSL twist-lock (120-277V) <sup>24</sup>
DLL347F 1.5 CUL JU	Photocell - SSL twist-lock (347V) <sup>24</sup>
DLL480F 1.5 CUL JU	Photocell - SSL twist-lock (480V) <sup>24</sup>
DSHORT SBK U	Shorting cap <sup>24</sup>
DSX0HS 20C U	House-side shield for P1,P2,P3 and P4 <sup>22</sup>
DSX0HS 30C U	House-side shield for P10,P11,P12 and P13 <sup>22</sup>
DSX0HS 40C U	House-side shield for P5,P6 and P7 <sup>22</sup>
DSX0DDL U	Diffused drop lens (polycarbonate) <sup>22</sup>
PUMBA DDBXD U*	Square and round pole universal mounting bracket adaptor (specify finish) <sup>23</sup>
KMA8 DDBXD U	Mast arm mounting bracket adaptor (specify finish) <sup>23</sup>
DSX0EGS (FINISH) U	External glare shield

For more control options, visit [DTL](#) and [ROAM](#) online. Link to [nLight Air 2](#)

### NOTES

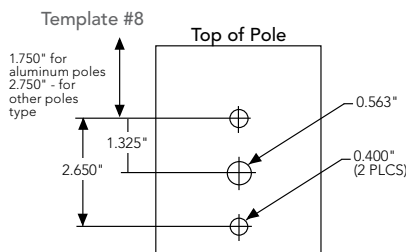
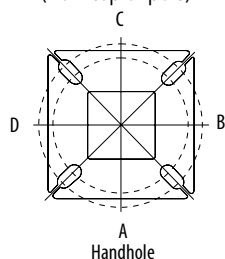
- 1 HA not available with P4, P7, and P13.
- 2 P10, P11, P12 and P13 and rotated options (L90 or R90) only available together.
- 3 Any Type 5 distribution with photocell, is not available with WBA.
- 4 Not available with HS or DDL.
- 5 MVOLT driver operates on any line voltage from 120-277V (50/60 Hz).
- 6 Single fuse (SF) requires 120V, 277V or 347V. Double fuse (DF) requires 208V, 240V or 480V. XVOLT not available with fusing (SF or DF).
- 7 XVOLT only suitable for use with P4, P7 and P13.
- 8 XVOLT operates with any voltage between 277V and 480V.
- 9 XVOLT not available with fusing (SF or DF) and not available with PIR, PIRH, PIR1FC3V, PIRH1FC3V.
- 10 Suitable for mounting to round poles between 3.5" and 12" diameter.
- 11 Universal mounting brackets intended for retrofit on existing pre-drilled poles only. 1.5 G vibration load rating per ANCI C136.31. Only usable when pole's drill pattern is NOT Lithonia template #8.
- 12 Must order fixture with SPA mounting. Must be ordered as a separate accessory; see Accessories information. For use with 2-3/8" diameter mast arm (not included).
- 13 Must be ordered with PIRHN.
- 14 Sensor cover available only in dark bronze, black, white and natural aluminum colors.
- 15 Must be ordered with NLTAIR2. For more information on nLight Air 2 visit [this link](#).
- 16 Photocell ordered and shipped as a separate line item from Acuity Brands Controls. See accessories. Shorting Cap included.
- 17 If ROAM<sup>®</sup> node required, it must be ordered and shipped as a separate line item from Acuity Brands Controls. Shorting Cap included.
- 18 DMG not available with PIRHN, PER5, PER7, PIR, PIRH, PIR1FC3V or PIRH1FC3V, FAO.
- 19 Reference Controls Options table on page 4.
- 20 Reference Motion Sensor Default Table on page 4 to see functionality.
- 21 Not available with other dimming controls options.
- 22 Not available with BLC, LCCO and RCCO distribution.
- 23 Must be ordered with fixture for factory pre-drilling.
- 24 Requires luminaire to be specified with PER, PER5 or PER7 option. See Controls Table on page 4.
- 25 For retrofit use only. Only usable when pole's drill pattern is NOT Lithonia template #8

## EGS – External Glare Shield



## Drilling

### HANDHOLE ORIENTATION (from top of pole)



### Tenon Mounting Slipfitter

Tenon O.D.	Mounting	Single Unit	2 @ 180	2 @ 90	3 @ 90	3 @ 120	4 @ 90
2-3/8"	RPA	AS3-5 190	AS3-5 280	AS3-5 290	AS3-5 390	AS3-5 320	AS3-5 490
2-7/8"	RPA	AST25-190	AST25-280	AST25-290	AST25-390	AST25-320	AST25-490
4"	RPA	AST35-190	AST35-280	AST35-290	AST35-390	AST35-320	AST35-490

Mounting Option	Drilling Template	Single	2 @ 180	2 @ 90	3 @ 90	3 @ 120	4 @ 90
Head Location		Side B	Side B & D	Side B & C	Side B, C & D	Round Pole Only	Side A, B, C & D
Drill Nomenclature	#8	DM19AS	DM28AS	DM29AS	DM39AS	DM32AS	DM49AS
Minimum Acceptable Outside Pole Dimension							
SPA	#8	2-7/8"	2-7/8"	3.5"	3.5"		3.5"
RPA	#8	2-7/8"	2-7/8"	3.5"	3.5"	3"	3.5"
SPUMBA	#5	2-7/8"	3"	4"	4"		4"
RPUMBA	#5	2-7/8"	3.5"	5"	5"	3.5"	5"

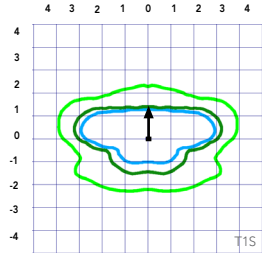
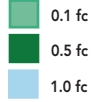
### DSX0 Area Luminaire - EPA

\*Includes luminaire and integral mounting arm. Other tenons, arms, brackets or other accessories are not included in this EPA data.

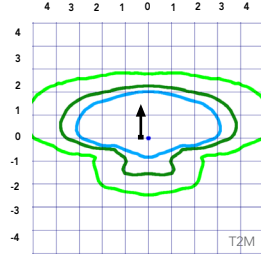
Fixture Quantity & Mounting Configuration	Single DM19	2 @ 180 DM28	2 @ 90 DM29	3 @ 90 DM39	3 @ 120 DM32	4 @ 90 DM49
Mounting Type						
DSX0 LED	0.950	1.900	1.830	2.850	2.850	3.544

Isofootcandle plots for the DSX0 LED 40C 1000 40K. Distances are in units of mounting height (20').

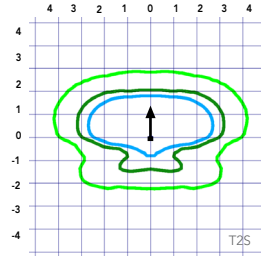
**LEGEND**



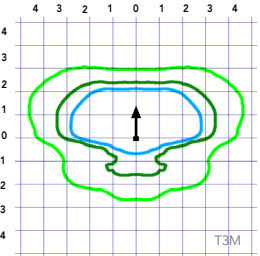
Test No.



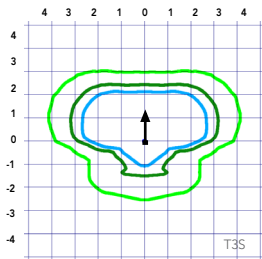
Test No.



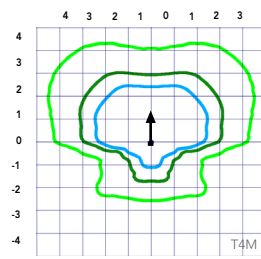
Test No. LTL23457P25 tested in accordance with IESNA LM-79-08.



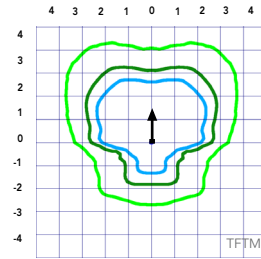
Test No. LTL23457P25 tested in accordance with IESNA LM-79-08.



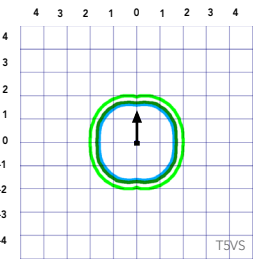
Test No. LTL23457P25 tested in accordance with IESNA LM-79-08.



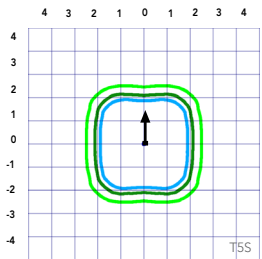
Test No.



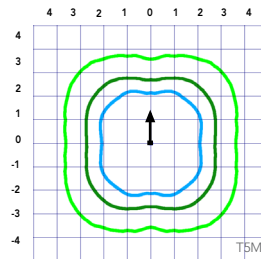
Test No.



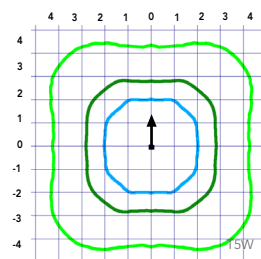
Test No.



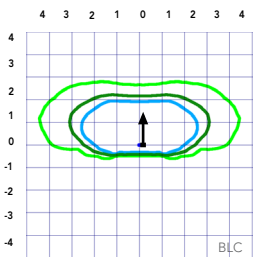
Test No.



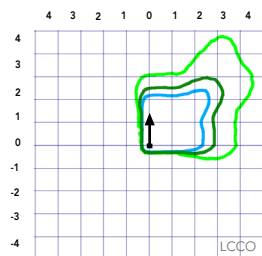
Test No.



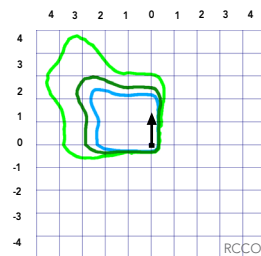
Test No. LTL23451P25 tested in accordance with IESNA LM-79-08.



Test No.



Test No.



Test No.

## Performance Data

### Lumen Ambient Temperature (LAT) Multipliers

Use these factors to determine relative lumen output for average ambient temperatures from 0-40°C (32-104°F).

Ambient		Lumen Multiplier
0°C	32°F	1.04
5°C	41°F	1.04
10°C	50°F	1.03
15°C	59°F	1.02
20°C	68°F	1.01
<b>25°C</b>	<b>77°C</b>	<b>1.00</b>
30°C	86°F	0.99
35°C	95°F	0.98
40°C	104°F	0.97

### Projected LED Lumen Maintenance

Data references the extrapolated performance projections for the platforms noted in a **25°C ambient**, based on 10,000 hours of LED testing (tested per IESNA LM-80-08 and projected per IESNA TM-21-11).

To calculate LLF, use the lumen maintenance factor that corresponds to the desired number of operating hours below. For other lumen maintenance values, contact factory.

Operating Hours	Lumen Maintenance Factor
25,000	0.96
50,000	0.92
100,000	0.85

#### Motion Sensor Default Settings

Option	Dimmed State	High Level (when triggered)	Photocell Operation	Dwell Time	Ramp-up Time	Ramp-down Time
PIR or PIRH	3V (37%) Output	10V (100%) Output	Enabled @ 5FC	5 min	3 sec	5 min
*PIR1FC3V or PIRH1FC3V	3V (37%) Output	10V (100%) Output	Enabled @ 1FC	5 min	3 sec	5 min

\*for use when motion sensor is used as dusk to dawn control.

### Electrical Load

					Current (A)					
	Performance Package	LED Count	Drive Current	Wattage	120	208	240	277	347	480
Forward Optics (Non-Rotated)	P1	20	530	38	0.32	0.18	0.15	0.15	0.10	0.08
	P2	20	700	49	0.41	0.23	0.20	0.19	0.14	0.11
	P3	20	1050	71	0.60	0.37	0.32	0.27	0.21	0.15
	P4	20	1400	92	0.77	0.45	0.39	0.35	0.28	0.20
	P5	40	700	89	0.74	0.43	0.38	0.34	0.26	0.20
	P6	40	1050	134	1.13	0.65	0.55	0.48	0.39	0.29
	P7	40	1300	166	1.38	0.80	0.69	0.60	0.50	0.37
Rotated Optics (Requires L90 or R90)	P10	30	530	53	0.45	0.26	0.23	0.21	0.16	0.12
	P11	30	700	72	0.60	0.35	0.30	0.27	0.20	0.16
	P12	30	1050	104	0.88	0.50	0.44	0.39	0.31	0.23
	P13	30	1300	128	1.08	0.62	0.54	0.48	0.37	0.27

### Controls Options

Nomenclature	Description	Functionality	Primary control device	Notes
FAO	Field adjustable output device installed inside the luminaire; wired to the driver dimming leads.	Allows the luminaire to be manually dimmed, effectively trimming the light output.	FAO device	Cannot be used with other controls options that need the 0-10V leads
DS	Drivers wired independently for 50/50 luminaire operation	The luminaire is wired to two separate circuits, allowing for 50/50 operation.	Independently wired drivers	Requires two separately switched circuits. Consider nLight AIR as a more cost effective alternative.
PERS or PER7	Twist-lock photocell receptacle	Compatible with standard twist-lock photocells for dusk to dawn operation, or advanced control nodes that provide 0-10V dimming signals.	Twist-lock photocells such as DLL Elite or advanced control nodes such as ROAM.	Pins 4 & 5 to dimming leads on driver, Pins 6 & 7 are capped inside luminaire
PIR or PIRH	Motion sensors with integral photocell. PIR for 8-15' mounting; PIRH for 15-30' mounting	Luminaires dim when no occupancy is detected.	Acuity Controls SBGR	Also available with PIRH1FC3V when the sensor photocell is used for dusk-to-dawn operation.
NLTAIR2 PIRHN	nLight AIR enabled luminaire for motion sensing, photocell and wireless communication.	Motion and ambient light sensing with group response. Scheduled dimming with motion sensor over-ride when wirelessly connected to the nLight Eclipse.	nLight Air rSDGR	nLight AIR sensors can be programmed and commissioned from the ground using the CIAIRity Pro app.

# Performance Data

## Lumen Output

Lumen values are from photometric tests performed in accordance with IESNA LM-79-08. Data is considered to be representative of the configurations shown, within the tolerances allowed by Lighting Facts. Contact factory for performance data on any configurations not shown here.

Forward Optics																			
Power Package	LED Count	Drive Current	System Watts	Dist. Type	30K (3000 K, 70 CRI)					40K (4000 K, 70 CRI)					50K (5000 K, 70 CRI)				
					Lumens	B	U	G	LPW	Lumens	B	U	G	LPW	Lumens	B	U	G	LPW
P1	20	530	38W	T1S	4,369	1	0	1	115	4,706	1	0	1	124	4,766	1	0	1	125
				T2S	4,364	1	0	1	115	4,701	1	0	1	124	4,761	1	0	1	125
				T2M	4,387	1	0	1	115	4,726	1	0	1	124	4,785	1	0	1	126
				T3S	4,248	1	0	1	112	4,577	1	0	1	120	4,634	1	0	1	122
				T3M	4,376	1	0	1	115	4,714	1	0	1	124	4,774	1	0	1	126
				T4M	4,281	1	0	1	113	4,612	1	0	2	121	4,670	1	0	2	123
				TFTM	4,373	1	0	1	115	4,711	1	0	2	124	4,771	1	0	2	126
				TSVS	4,548	2	0	0	120	4,900	2	0	0	129	4,962	2	0	0	131
				T5S	4,552	2	0	0	120	4,904	2	0	0	129	4,966	2	0	0	131
				T5M	4,541	3	0	1	120	4,891	3	0	1	129	4,953	3	0	1	130
				TSW	4,576	3	0	2	120	4,929	3	0	2	130	4,992	3	0	2	131
				BLC	3,586	1	0	1	94	3,863	1	0	1	102	3,912	1	0	1	103
				LCCO	2,668	1	0	1	70	2,874	1	0	2	76	2,911	1	0	2	77
				RCCO	2,668	1	0	1	70	2,874	1	0	2	76	2,911	1	0	2	77
P2	20	700	49W	T1S	5,570	1	0	1	114	6,001	1	0	1	122	6,077	2	0	2	124
				T2S	5,564	1	0	2	114	5,994	1	0	2	122	6,070	2	0	2	124
				T2M	5,593	1	0	1	114	6,025	1	0	1	123	6,102	1	0	1	125
				T3S	5,417	1	0	2	111	5,835	1	0	2	119	5,909	2	0	2	121
				T3M	5,580	1	0	2	114	6,011	1	0	2	123	6,087	1	0	2	124
				T4M	5,458	1	0	2	111	5,880	1	0	2	120	5,955	1	0	2	122
				TFTM	5,576	1	0	2	114	6,007	1	0	2	123	6,083	1	0	2	124
				TSVS	5,799	2	0	0	118	6,247	2	0	0	127	6,327	2	0	0	129
				T5S	5,804	2	0	0	118	6,252	2	0	0	128	6,332	2	0	1	129
				T5M	5,789	3	0	1	118	6,237	3	0	1	127	6,316	3	0	1	129
				TSW	5,834	3	0	2	119	6,285	3	0	2	128	6,364	3	0	2	130
				BLC	4,572	1	0	1	93	4,925	1	0	1	101	4,987	1	0	1	102
				LCCO	3,402	1	0	2	69	3,665	1	0	2	75	3,711	1	0	2	76
				RCCO	3,402	1	0	2	69	3,665	1	0	2	75	3,711	1	0	2	76
P3	20	1050	71W	T1S	7,833	2	0	2	110	8,438	2	0	2	119	8,545	2	0	2	120
				T2S	7,825	2	0	2	110	8,429	2	0	2	119	8,536	2	0	2	120
				T2M	7,865	2	0	2	111	8,473	2	0	2	119	8,580	2	0	2	121
				T3S	7,617	2	0	2	107	8,205	2	0	2	116	8,309	2	0	2	117
				T3M	7,846	2	0	2	111	8,452	2	0	2	119	8,559	2	0	2	121
				T4M	7,675	2	0	2	108	8,269	2	0	2	116	8,373	2	0	2	118
				TFTM	7,841	2	0	2	110	8,447	2	0	2	119	8,554	2	0	2	120
				TSVS	8,155	3	0	0	115	8,785	3	0	0	124	8,896	3	0	0	125
				T5S	8,162	3	0	1	115	8,792	3	0	1	124	8,904	3	0	1	125
				T5M	8,141	3	0	2	115	8,770	3	0	2	124	8,881	3	0	2	125
				TSW	8,204	3	0	2	116	8,838	4	0	2	124	8,950	4	0	2	126
				BLC	6,429	1	0	2	91	6,926	1	0	2	98	7,013	1	0	2	99
				LCCO	4,784	1	0	2	67	5,153	1	0	2	73	5,218	1	0	2	73
				RCCO	4,784	1	0	2	67	5,153	1	0	2	73	5,218	1	0	2	73
P4	20	1400	92W	T1S	9,791	2	0	2	106	10,547	2	0	2	115	10,681	2	0	2	116
				T2S	9,780	2	0	2	106	10,536	2	0	2	115	10,669	2	0	2	116
				T2M	9,831	2	0	2	107	10,590	2	0	2	115	10,724	2	0	2	117
				T3S	9,521	2	0	2	103	10,256	2	0	2	111	10,386	2	0	2	113
				T3M	9,807	2	0	2	107	10,565	2	0	2	115	10,698	2	0	2	116
				T4M	9,594	2	0	2	104	10,335	2	0	3	112	10,466	2	0	3	114
				TFTM	9,801	2	0	2	107	10,558	2	0	2	115	10,692	2	0	2	116
				TSVS	10,193	3	0	1	111	10,981	3	0	1	119	11,120	3	0	1	121
				T5S	10,201	3	0	1	111	10,990	3	0	1	119	11,129	3	0	1	121
				T5M	10,176	4	0	2	111	10,962	4	0	2	119	11,101	4	0	2	121
				TSW	10,254	4	0	3	111	11,047	4	0	3	120	11,186	4	0	3	122
				BLC	8,036	1	0	2	87	8,656	1	0	2	94	8,766	1	0	2	95
				LCCO	5,979	1	0	2	65	6,441	1	0	2	70	6,523	1	0	3	71
				RCCO	5,979	1	0	2	65	6,441	1	0	2	70	6,523	1	0	3	71



# Performance Data

## Lumen Output

Lumen values are from photometric tests performed in accordance with IESNA LM-79-08. Data is considered to be representative of the configurations shown, within the tolerances allowed by Lighting Facts. Contact factory for performance data on any configurations not shown here.

Forward Optics																			
Power Package	LED Count	Drive Current	System Watts	Dist. Type	30K (3000 K, 70 CRI)					40K (4000 K, 70 CRI)					50K (5000 K, 70 CRI)				
					Lumens	B	U	G	LPW	Lumens	B	U	G	LPW	Lumens	B	U	G	LPW
P5	40	700	89W	T1S	10,831	2	0	2	122	11,668	2	0	2	131	11,816	2	0	2	133
				T2S	10,820	2	0	2	122	11,656	2	0	2	131	11,803	2	0	2	133
				T2M	10,876	2	0	2	122	11,716	2	0	2	132	11,864	2	0	2	133
				T3S	10,532	2	0	2	118	11,346	2	0	2	127	11,490	2	0	2	129
				T3M	10,849	2	0	2	122	11,687	2	0	2	131	11,835	2	0	2	133
				T4M	10,613	2	0	3	119	11,434	2	0	3	128	11,578	2	0	3	130
				TFTM	10,842	2	0	2	122	11,680	2	0	2	131	11,828	2	0	2	133
				TSVS	11,276	3	0	1	127	12,148	3	0	1	136	12,302	3	0	1	138
				T5S	11,286	3	0	1	127	12,158	3	0	1	137	12,312	3	0	1	138
				T5M	11,257	4	0	2	126	12,127	4	0	2	136	12,280	4	0	2	138
				T5W	11,344	4	0	3	127	12,221	4	0	3	137	12,375	4	0	3	139
				BLC	8,890	1	0	2	100	9,576	1	0	2	108	9,698	1	0	2	109
				LCCO	6,615	1	0	3	74	7,126	1	0	3	80	7,216	1	0	3	81
				RCCO	6,615	1	0	3	74	7,126	1	0	3	80	7,216	1	0	3	81
				P6	40	1050	134W	T1S	14,805	3	0	3	110	15,949	3	0	3	119	16,151
T2S	14,789	3	0					3	110	15,932	3	0	3	119	16,134	3	0	3	120
T2M	14,865	3	0					3	111	16,014	3	0	3	120	16,217	3	0	3	121
T3S	14,396	3	0					3	107	15,509	3	0	3	116	15,705	3	0	3	117
T3M	14,829	2	0					3	111	15,975	3	0	3	119	16,177	3	0	3	121
T4M	14,507	2	0					3	108	15,628	3	0	3	117	15,826	3	0	3	118
TFTM	14,820	2	0					3	111	15,965	3	0	3	119	16,167	3	0	3	121
TSVS	15,413	4	0					1	115	16,604	4	0	1	124	16,815	4	0	1	125
T5S	15,426	3	0					1	115	16,618	4	0	1	124	16,828	4	0	1	126
T5M	15,387	4	0					2	115	16,576	4	0	2	124	16,786	4	0	2	125
T5W	15,506	4	0					3	116	16,704	4	0	3	125	16,915	4	0	3	126
BLC	12,151	1	0					2	91	13,090	1	0	2	98	13,255	1	0	2	99
LCCO	9,041	1	0					3	67	9,740	1	0	3	73	9,863	1	0	3	74
RCCO	9,041	1	0					3	67	9,740	1	0	3	73	9,863	1	0	3	74
P7	40	1300	166W					T1S	17,023	3	0	3	103	18,338	3	0	3	110	18,570
				T2S	17,005	3	0	3	102	18,319	3	0	3	110	18,551	3	0	3	112
				T2M	17,092	3	0	3	103	18,413	3	0	3	111	18,646	3	0	3	112
				T3S	16,553	3	0	3	100	17,832	3	0	3	107	18,058	3	0	3	109
				T3M	17,051	3	0	3	103	18,369	3	0	3	111	18,601	3	0	3	112
				T4M	16,681	3	0	3	100	17,969	3	0	3	108	18,197	3	0	3	110
				TFTM	17,040	3	0	3	103	18,357	3	0	4	111	18,590	3	0	4	112
				TSVS	17,723	4	0	1	107	19,092	4	0	1	115	19,334	4	0	1	116
				T5S	17,737	4	0	2	107	19,108	4	0	2	115	19,349	4	0	2	117
				T5M	17,692	4	0	2	107	19,059	4	0	2	115	19,301	4	0	2	116
				T5W	17,829	5	0	3	107	19,207	5	0	3	116	19,450	5	0	3	117
				BLC	13,971	2	0	2	84	15,051	2	0	2	91	15,241	2	0	2	92
				LCCO	10,396	1	0	3	63	11,199	1	0	3	67	11,341	1	0	3	68
				RCCO	10,396	1	0	3	63	11,199	1	0	3	67	11,341	1	0	3	68



# Performance Data

## Lumen Output

Lumen values are from photometric tests performed in accordance with IESNA LM-79-08. Data is considered to be representative of the configurations shown, within the tolerances allowed by Lighting Facts. Contact factory for performance data on any configurations not shown here.

Rotated Optics																			
Power Package	LED Count	Drive Current	System Watts	Dist. Type	30K (3000 K, 70 CRI)					40K (4000 K, 70 CRI)					50K (5000 K, 70 CRI)				
					Lumens	B	U	G	LPW	Lumens	B	U	G	LPW	Lumens	B	U	G	LPW
P10	30	530	53W	T1S	6,727	2	0	2	127	7,247	3	0	3	137	7,339	3	0	3	138
				T2S	6,689	3	0	3	126	7,205	3	0	3	136	7,297	3	0	3	138
				T2M	6,809	3	0	3	128	7,336	3	0	3	138	7,428	3	0	3	140
				T3S	6,585	3	0	3	124	7,094	3	0	3	134	7,183	3	0	3	136
				T3M	6,805	3	0	3	128	7,331	3	0	3	138	7,424	3	0	3	140
				T4M	6,677	3	0	3	126	7,193	3	0	3	136	7,284	3	0	3	137
				TFTM	6,850	3	0	3	129	7,379	3	0	3	139	7,472	3	0	3	141
				TSVS	6,898	3	0	0	130	7,431	3	0	0	140	7,525	3	0	0	142
				T5S	6,840	2	0	1	129	7,368	2	0	1	139	7,461	2	0	1	141
				TSM	6,838	3	0	1	129	7,366	3	0	2	139	7,460	3	0	2	141
				TSW	6,777	3	0	2	128	7,300	3	0	2	138	7,393	3	0	2	139
				BLC	5,626	2	0	2	106	6,060	2	0	2	114	6,137	2	0	2	116
				LCCO	4,018	1	0	2	76	4,328	1	0	2	82	4,383	1	0	2	83
				RCCO	4,013	3	0	3	76	4,323	3	0	3	82	4,377	3	0	3	83
				P11	30	700	72W	T1S	8,594	3	0	3	119	9,258	3	0	3	129	9,376
T2S	8,545	3	0					3	119	9,205	3	0	3	128	9,322	3	0	3	129
T2M	8,699	3	0					3	121	9,371	3	0	3	130	9,490	3	0	3	132
T3S	8,412	3	0					3	117	9,062	3	0	3	126	9,177	3	0	3	127
T3M	8,694	3	0					3	121	9,366	3	0	3	130	9,484	3	0	3	132
T4M	8,530	3	0					3	118	9,189	3	0	3	128	9,305	3	0	3	129
TFTM	8,750	3	0					3	122	9,427	3	0	3	131	9,546	3	0	3	133
TSVS	8,812	3	0					0	122	9,493	3	0	0	132	9,613	3	0	0	134
T5S	8,738	3	0					1	121	9,413	3	0	1	131	9,532	3	0	1	132
TSM	8,736	3	0					2	121	9,411	3	0	2	131	9,530	3	0	2	132
TSW	8,657	4	0					2	120	9,326	4	0	2	130	9,444	4	0	2	131
BLC	7,187	3	0					3	100	7,742	3	0	3	108	7,840	3	0	3	109
LCCO	5,133	1	0					2	71	5,529	1	0	2	77	5,599	1	0	2	78
RCCO	5,126	3	0					3	71	5,522	3	0	3	77	5,592	3	0	3	78
P12	30	1050	104W					T1S	12,149	3	0	3	117	13,088	3	0	3	126	13,253
				T2S	12,079	4	0	4	116	13,012	4	0	4	125	13,177	4	0	4	127
				T2M	12,297	3	0	3	118	13,247	3	0	3	127	13,415	3	0	3	129
				T3S	11,891	4	0	4	114	12,810	4	0	4	123	12,972	4	0	4	125
				T3M	12,290	3	0	3	118	13,239	4	0	4	127	13,407	4	0	4	129
				T4M	12,058	4	0	4	116	12,990	4	0	4	125	13,154	4	0	4	126
				TFTM	12,369	4	0	4	119	13,325	4	0	4	128	13,494	4	0	4	130
				TSVS	12,456	3	0	1	120	13,419	3	0	1	129	13,589	4	0	1	131
				T5S	12,351	3	0	1	119	13,306	3	0	1	128	13,474	3	0	1	130
				TSM	12,349	4	0	2	119	13,303	4	0	2	128	13,471	4	0	2	130
				TSW	12,238	4	0	3	118	13,183	4	0	3	127	13,350	4	0	3	128
				BLC	10,159	3	0	3	98	10,944	3	0	3	105	11,083	3	0	3	107
				LCCO	7,256	1	0	3	70	7,816	1	0	3	75	7,915	1	0	3	76
				RCCO	7,246	3	0	3	70	7,806	4	0	4	75	7,905	4	0	4	76
				P13	30	1300	128W	T1S	14,438	3	0	3	113	15,554	3	0	3	122	15,751
T2S	14,355	4	0					4	112	15,465	4	0	4	121	15,660	4	0	4	122
T2M	14,614	3	0					3	114	15,744	4	0	4	123	15,943	4	0	4	125
T3S	14,132	4	0					4	110	15,224	4	0	4	119	15,417	4	0	4	120
T3M	14,606	4	0					4	114	15,735	4	0	4	123	15,934	4	0	4	124
T4M	14,330	4	0					4	112	15,438	4	0	4	121	15,633	4	0	4	122
TFTM	14,701	4	0					4	115	15,836	4	0	4	124	16,037	4	0	4	125
TSVS	14,804	4	0					1	116	15,948	4	0	1	125	16,150	4	0	1	126
T5S	14,679	3	0					1	115	15,814	3	0	1	124	16,014	3	0	1	125
TSM	14,676	4	0					2	115	15,810	4	0	2	124	16,010	4	0	2	125
TSW	14,544	4	0					3	114	15,668	4	0	3	122	15,866	4	0	3	124
BLC	7919	3	0					3	62	8531	3	0	3	67	8639	3	0	3	67
LCCO	5145	1	0					2	40	5543	1	0	2	43	5613	1	0	2	44
RCCO	5139	3	0					3	40	5536	3	0	3	43	5606	3	0	3	44

## FEATURES & SPECIFICATIONS

### INTENDED USE

The sleek design of the D-Series Size 0 reflects the embedded high performance LED technology. It is ideal for many commercial and municipal applications, such as parking lots, plazas, campuses, and pedestrian areas.

### CONSTRUCTION

Single-piece die-cast aluminum housing has integral heat sink fins to optimize thermal management through conductive and convective cooling. Modular design allows for ease of maintenance and future light engine upgrades. The LED driver is mounted in direct contact with the casting to promote low operating temperature and long life. Housing is completely sealed against moisture and environmental contaminants (IP65). Low EPA (0.95 ft<sup>2</sup>) for optimized pole wind loading.

### FINISH

Exterior parts are protected by a zinc-infused Super Durable TGIC thermoset powder coat finish that provides superior resistance to corrosion and weathering. A tightly controlled multi-stage process ensures a minimum 3 mils thickness for a finish that can withstand extreme climate changes without cracking or peeling. Available in both textured and non-textured finishes.

### OPTICS

Precision-molded proprietary acrylic lenses are engineered for superior area lighting distribution, uniformity, and pole spacing. Light engines are available in 3000 K, 4000 K or 5000 K (70 CRI) configurations. The D-Series Size 0 has zero uplight and qualifies as a Nighttime Friendly™ product, meaning it is consistent with the LEED® and Green Globes™ criteria for eliminating wasteful uplight.

### ELECTRICAL

Light engine(s) configurations consist of high-efficacy LEDs mounted to metal-core circuit boards to maximize heat dissipation and promote long life (up to L85/100,000 hours at 25°C). Class 1 electronic drivers are designed to have a power factor >90%, THD <20%, and an expected life of 100,000 hours with <1% failure rate. Easily serviceable 10kV surge protection device meets a minimum Category C Low operation (per ANSI/IEEE C62.41.2).

### STANDARD CONTROLS

The DSX0 LED area luminaire has a number of control options. DSX Size 0, comes standard with 0-10V dimming driver. Dusk to dawn controls can be utilized via optional NEMA twist-lock photocell receptacles. Integrated motion sensors with on-board photocells feature field-adjustable programming and are suitable for mounting heights up to 30 feet.

### nLIGHT AIR CONTROLS

The DSX0 LED area luminaire is also available with nLight® AIR for the ultimate in wireless control. This powerful controls platform provides out-of-the-box basic motion sensing and photocontrol functionality and is suitable for mounting heights up to 40 feet. Once commissioned using a smartphone and the easy-to-use CLAIRITY app, nLight AIR equipped luminaires can be grouped, resulting in motion sensor and photocell group response without the need for additional equipment. Scheduled dimming with motion sensor over-ride can be achieved when used with the nLight Eclipse. Additional information about nLight Air can be found [here](#).

### INSTALLATION

Included mounting block and integral arm facilitate quick and easy installation. Stainless steel bolts fasten the mounting block securely to poles and walls, enabling the D-Series Size 0 to withstand up to a 3.0 G vibration load rating per ANSI C136.31. The D-Series Size 0 utilizes the AERIS™ series pole drilling pattern (template #8). Optional terminal block and NEMA photocontrol receptacle are also available.

### LISTINGS

UL listed to meet U.S. and Canadian standards. UL Listed for wet locations. Light engines are IP66 rated; luminaire is IP65 rated. Rated for -40°C to 50°C ambient with HA option. U.S. Patent No. D672,492 S. International patent pending.

DesignLights Consortium® (DLC) Premium qualified product and DLC qualified product. Not all versions of this product may be DLC Premium qualified or DLC qualified. Please check the DLC Qualified Products List at [www.designlights.org/QPL](http://www.designlights.org/QPL) to confirm which versions are qualified.

International Dark-Sky Association (IDA) Fixture Seal of Approval (FSA) is available for all products on this page utilizing 3000K color temperature only.

### BUY AMERICAN

Product with the BAA option is assembled in the USA and meets the Buy America(n) government procurement requirements under FAR, DFARS and DOT. Please refer to [www.acuitybrands.com/buy-american](http://www.acuitybrands.com/buy-american) for additional information.

### WARRANTY

5-year limited warranty. Complete warranty terms located at: [www.acuitybrands.com/support/customer-support/terms-and-conditions](http://www.acuitybrands.com/support/customer-support/terms-and-conditions)

**Note:** Actual performance may differ as a result of end-user environment and application. All values are design or typical values, measured under laboratory conditions at 25 °C. Specifications subject to change without notice.

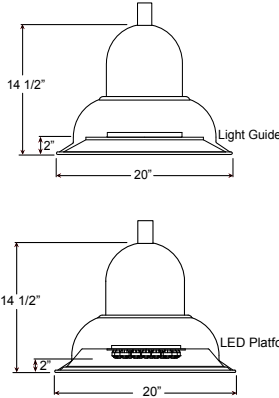


INDICATED AS "SB, SC, SD, SF" ON ILLUMINATION REPORT

Project: \_\_\_\_\_

Fixture Type: \_\_\_\_\_ Quantity: \_\_\_\_\_

Customer: \_\_\_\_\_



**Specifications**

**Material:**  
All parts are durable 356 cast aluminum and high strength aluminum spinnings. All hardware provided shall be stainless steel or zinc plated steel.

**Fixture Mounting:**  
Pendant Mount: Pin mount to tenon. Fits 3" and 4" poles.

**Drivers:**  
Universal voltage 120-277 is standard. 0-10V dimming is standard for LED platforms and Light Guide.

See page 2 for LED engine and driver specifications.



**Electrical:**  
20kA max/10kA nominal surge protection device is standard.

Approximately 12" of pull wire extends from luminaire. Additional pull wire provided for post mount arms and wall mounts.

**Finish:**  
A polyester powder coat high quality finish is electro-statically applied and baked at 430° for exceptional durability and color retention. Products undergo an intensive five-step cleansing and pretreatment process for maximum paint adhesion.

Marine grade finish provides superior salt, humidity and UV protection. This coating withstands up to 3000 hours of continuous salt spray, comes with a 5-year warranty and is available in either a textured or gloss surface.

**Modifications:**  
Consult factory for custom or modified designs.

**BVB2001 - LED**

Dark Sky Friendly

Weight: 16.0 lbs

EPA: 0.96

**Catalog Logic**

**BVB2001** | **P078LD4D** | **T5** | **40K** - **PC** - **PA1613** - **72**  
 Luminaire Series | Light Source & Wattage | Optic | CCT | Accessories | Mounting Finish

Catalog Number	1	2	3	4	5	6
<b>BVB2001</b>						

1 LIGHT SOURCE & WATTAGES	
<b>Platform</b>	
P029LD4D	(29w Platform LED)
P046LD4D	(46w Platform LED)
P078LD4D	(78w Platform LED)
P117LD4D	(117w Platform LED)
<b>Light Guide Small</b>	
E030LDS	(30w Light Guide LED)
E040LDS	(40w Light Guide LED)
E050LDS	(50w Light Guide LED)
E065LDS	(65w Light Guide LED)
E080LDS	(80w Light Guide LED)

2 OPTICS	
Platform	Light Guide Small
T2 (Type II)	T2 (Type II) (30w, 40w and 50w Only)
T3 (Type III)	T3 (Type III)
T5 (Type V)	T4 (Type IV) T5 (Type V)

3 COLOR TEMPERATURE (CCT)	
27K	(2700K)
30K	(3000K)
35K	(3500K)
40K	(4000K)

4 ACCESSORIES	
HSS90	(90° House Side Shield, polished)
HSS120	(120° House Side Shield, polished)
**4ST36	(3 Ft, 1 1/4" Ridged Stem & Canopy)
**PEND-CH3	(3 Ft Pendant Chain & Canopy)
*EMG-LED20HV	(20w, High Voltage LED Emergency Driver, remote placement, for use with Platforms and Towers, 78w or less)
HLMSPC-06	(High-Low Motion Sensor/Photocell; 15' - 30' Sensor Mounting Height)
HLMSPC-10	(High-Low Motion Sensor/Photocell; 8' - 15' Sensor Mounting Height)
**PA-BF	(Post Arm Ball Fitter)
**PA-BFS	(Post Arm Ball Fitter w/Swivel)
PC	(Button Photo Cell)
SP	(Surge Protector, 10kA & 10kV)
TLPC	(Twist Lock photo cell, includes receptacle & photo cell)
TL5	(5-pin Twist Lock receptacle)
TL7	(7-pin Twist Lock receptacle)
*For Emergency lumen output data, see Resources section at <a href="http://www.ANPlighting.com">www.ANPlighting.com</a> .	
**Accessory finish will match fixture finish.	

5 MOUNTING SOURCE			
Post Mount Arms		Wall Mount Arms	
*See Page 4 for Style/Size		*See Page 4 for Style/Size	
PA0413	PA6213	WM0413	WM5163
PA1613	PA8453	WM1613	WM5603
PA1753		WM1763	
PA2023		WM1773	
PA2313		WM2313	
PA2613		WM3003	
PA3113		WM3203	
PA3213		WM3553	
PA3533		WM4513	
PA5153		WM5143	
Column Mount			
*See Page 4 for Style/Size			
CM	Column Mount		

6 FINISHES					
*Premium and Marine Grade Finish have additional charges					
Standard Colors	Standard Grade	Marine Grade*	Standard Colors	Standard Grade	Marine Grade*
Aspen Green	10	10M	Architectural Bronze	51	51M
Cantaloupe	11	11M	Patina Verde	52	52M
Lilac	12	12M	Copper Clay	53	53M
Putty	13	13M	Silver	56	56M
Raw Unfinished	40	NA	Black Verde	61	61M
Black	41	41M	Painted Chrome	70	70M
Forest Green	42	42M	Painted Copper	71	71M
Bright Red	43	43M	Textured Black	72	72M
White	44	44M	Matte Black	73	73M
Bright Blue	45	45M	Textured Architectural Bronze	76	76M
Sunny Yellow	46	46M	Textured White	77	77M
Aqua Green	47	47M	Textured Silver	78	78M
Galvanized	49	NA		Premium Grade*	Marine Grade*
Navy	50	50M	Carbon Graphite	96	96M

Consult Factory for additional paint charges and availability.

Project: \_\_\_\_\_  
 Fixture Type: \_\_\_\_\_ Quantity: \_\_\_\_\_  
 Customer: \_\_\_\_\_

**LED PERFORMANCE**

PLATFORM SPECIFICATION
• Efficacy ranges from 87-116 lumens per watt
• Customized lens precisely directs the light
• Operating temperature of -30C to 55C
• Life: L70 is 60,000 hours
• PLATFORM CCT: 2700K, 3000K, 3500K, and 4000K
• TOWER CCT: 4000K
• CRI: >70
• Parallel circuitry ensures consistent light output in the event of single LED failure

PLATFORM DRIVER SPECIFICATION
• Operates at 400mA
• Dimmable down to 10%
• Built in surge protection
• Constant current output 50/60HZ
• Driver Efficiency > 90% power factor above 99%
• 120 – 277 volts
• 0-10V dimming protocol is standard

PLATFORM LISTINGS
• Fully compliant with the RoHS Directive
• Certifications: ETL
• Rated IP65 with an optional IP6 rating

PLATFORM						Type III			Type V		
LED Wattage	CCT	CRI	Typical Luminous Flux	System Wattage	Typical Efficacy	B	U	G	B	U	G
29W	2700K	70	2670	30w	89	-	-	-	-	-	-
	3000K	70	2670	30w	89	-	-	-	-	-	-
	3500K	70	3209	30w	107	-	-	-	-	-	-
	4000K	70	3465	30w	116	1	0	1	2	0	1
46W	2700K	70	4004	46w	87	-	-	-	-	-	-
	3000K	70	4004	46w	87	-	-	-	-	-	-
	3500K	70	4814	46w	105	-	-	-	-	-	-
	4000K	70	5197	46w	115	1	0	1	1	0	1
78W	2700K	70	7041	80w	88	-	-	-	-	-	-
	3000K	70	7041	80w	88	-	-	-	-	-	-
	3500K	70	8464	80w	106	-	-	-	-	-	-
	4000K	70	9138	80w	114	3	0	1	2	0	2
117W	2700K	70	10561	120w	88	-	-	-	-	-	-
	3000K	70	10561	120w	88	-	-	-	-	-	-
	3500K	70	12696	120w	106	-	-	-	-	-	-
	4000K	70	13707	120w	114	3	0	2	4	0	2

LIGHT GUIDE SPECIFICATION
• Typical Efficacy is 101 - 126 lumens per watt
• Color temp: 2700K, 3000K, 3500K and 4000K
• CRI: 70
• Distribution: Type II, III, IV & V

LIGHT GUIDE DRIVER SPECIFICATION		
• 120 thru 277 Universal Voltage	• Drive Current: 900mA to 2505mA (model dependent)	
• 50/60 HZ	• Driver Efficiency > 80%; Power Factor > 0.90	
• 0-10V dimming to 10%	• Lifetime: 50,000 hours	
• Minimum operating temperature: -30°C	• Integral Surge Protection in conformance to IP64	
	• UL, cUL, CE	

**LIGHT GUIDE SMALL**

LED Wattage	CCT	CRI	Type II			Type III			Type IV			Type V			Drive Current				Nominal System
			Delivered Lumens	Lumens Per Watt	B U G	Delivered Lumens	Lumens Per Watt	B U G	Delivered Lumens	Lumens Per Watt	B U G	Delivered Lumens	Lumens Per	B U G	Type II	Type III	Type IV	Type V	
30W	2700K	70	3307	110	1 0 1	3405	114	1 0 1	3474	116	1 0 1	3124	104	2 0 1	900mA	925mA	925mA	925mA	30w
	3000K	70	3211	107	1 0 1	3307	110	1 0 1	3373	112	1 0 1	3034	101	2 0 1	900mA	925mA	925mA	925mA	30w
	3500K	70	3595	120	1 0 1	3702	123	1 0 1	3776	126	1 0 1	3396	113	2 0 1	900mA	925mA	925mA	925mA	30w
	4000K	70	3479	116	1 0 1	3583	119	1 0 1	3655	122	1 0 1	3287	110	2 0 1	900mA	925mA	925mA	925mA	30w
40W	2700K	70	4409	110	2 0 2	4541	114	2 0 2	4631	116	2 0 2	4165	104	2 0 1	1150mA	1200mA	1200mA	1200mA	40w
	3000K	70	4282	107	2 0 2	4409	110	2 0 2	4497	112	2 0 2	4045	101	2 0 1	1150mA	1200mA	1200mA	1200mA	40w
	3500K	70	4793	120	2 0 2	4936	123	2 0 2	5035	126	2 0 2	4528	113	2 0 1	1150mA	1200mA	1200mA	1200mA	40w
	4000K	70	4639	116	2 0 2	4778	119	2 0 2	4873	122	2 0 2	4383	110	2 0 1	1150mA	1200mA	1200mA	1200mA	40w
50W	2700K	70	5492	110	2 0 2	5676	114	2 0 2	5789	116	2 0 2	5207	104	3 0 1	1495mA	1580mA	1580mA	1580mA	50w
	3000K	70	5333	107	2 0 2	5511	110	2 0 2	5622	112	2 0 2	5056	101	3 0 1	1495mA	1580mA	1580mA	1580mA	50w
	3500K	70	5970	120	2 0 2	6170	123	2 0 2	6293	126	2 0 2	5660	113	3 0 1	1495mA	1580mA	1580mA	1580mA	50w
	4000K	70	5778	116	2 0 2	5972	119	2 0 2	6092	122	2 0 2	5479	110	3 0 1	1495mA	1580mA	1580mA	1580mA	50w
65W	2700K	70	-	-	-	7378	114	3 0 3	7526	116	2 0 2	6769	104	3 0 1	-	2065mA	2065mA	2065mA	65w
	3000K	70	-	-	-	7165	110	3 0 3	7308	112	2 0 2	6573	101	3 0 1	-	2065mA	2065mA	2065mA	65w
	3500K	70	-	-	-	8021	123	3 0 3	8181	126	2 0 2	7358	113	3 0 1	-	2065mA	2065mA	2065mA	65w
	4000K	70	-	-	-	7764	119	3 0 3	7919	122	2 0 2	7122	110	3 0 1	-	2065mA	2065mA	2065mA	65w
80W	2700K	70	-	-	-	9007	114	3 0 3	9186	116	3 0 3	8321	104	3 0 2	-	2505mA	2505mA	2505mA	80w
	3000K	70	-	-	-	8747	110	3 0 3	8921	112	3 0 3	8081	101	3 0 2	-	2505mA	2505mA	2505mA	80w
	3500K	70	-	-	-	9792	123	3 0 3	9986	126	3 0 3	9046	113	3 0 2	-	2505mA	2505mA	2505mA	80w
	4000K	70	-	-	-	9478	119	3 0 3	9666	122	3 0 3	8758	110	3 0 2	-	2505mA	2505mA	2505mA	80w

Project: \_\_\_\_\_  
 Fixture Type: \_\_\_\_\_ Quantity: \_\_\_\_\_  
 Customer: \_\_\_\_\_

**HIGH-LOW MOTION SENSOR**

- 0-10v configurable output set to 10%, 25% or 50% dimming
- Adjustable time delay
- 45° Detection
- Mounts Integral to fixture
- Lens available in white only
- Satisfies California Title 24

**SURGE SUPPRESSION**

- A Surge Protection Device (SPD) is standard featuring a 20kA maximum discharge current 8/20µs Waveform (Imax); 10kA nominal discharge current 8/20µs Waveform (In) and thermally protected varistor technology.
- Meets IEEE C62.41.2 Location Category C High and US Dept of Energy MSSLC Model Spec.
- SPD shall be wired in series and will result in an open circuit during a fault state, resulting in the luminaire to turn off to protect system components thereby indicating SPD module replacement.

**WARRANTY**

See [www.ANPlighting.com](http://www.ANPlighting.com) for complete fixture warranty.

LED warranty information

- 7 year limited warranty\* on Platform LED engines
- 5 year limited warranty\* on Light Guide engines
- 5 year limited warranty\* on LED Drivers

\*Limited Warranty: A typical year is defined as 4380 hours of operation. Failed defined as more than 10% of the total platform LED's not operating.

**ACCESSORIES**



HSS90 & HSS120



4ST36



PEND-CH3



EMG-LED20HV



HLMSPC-06 & HLMSPC-10 PA-BF



PA-BFS



PC



TLPC



TL5 & TL7

Project: \_\_\_\_\_  
 Fixture Type: \_\_\_\_\_ Quantity: \_\_\_\_\_  
 Customer: \_\_\_\_\_

**POST MOUNTS** | See Post Arm Section on Website for Specification Sheets and additional post arms.



**COLUMN MOUNT**



**CM** 5 3/4" SQ x 3 1/2" H

**WALL MOUNTS** | See Wall Mount Section on Website for Specification Sheets and additional wall mount arms.



DEC 759  
HICKORY  
LRV 35  
CHROMA 2.0



DEC 759  
HICKORY  
LRV 35  
CHROMA 2.0

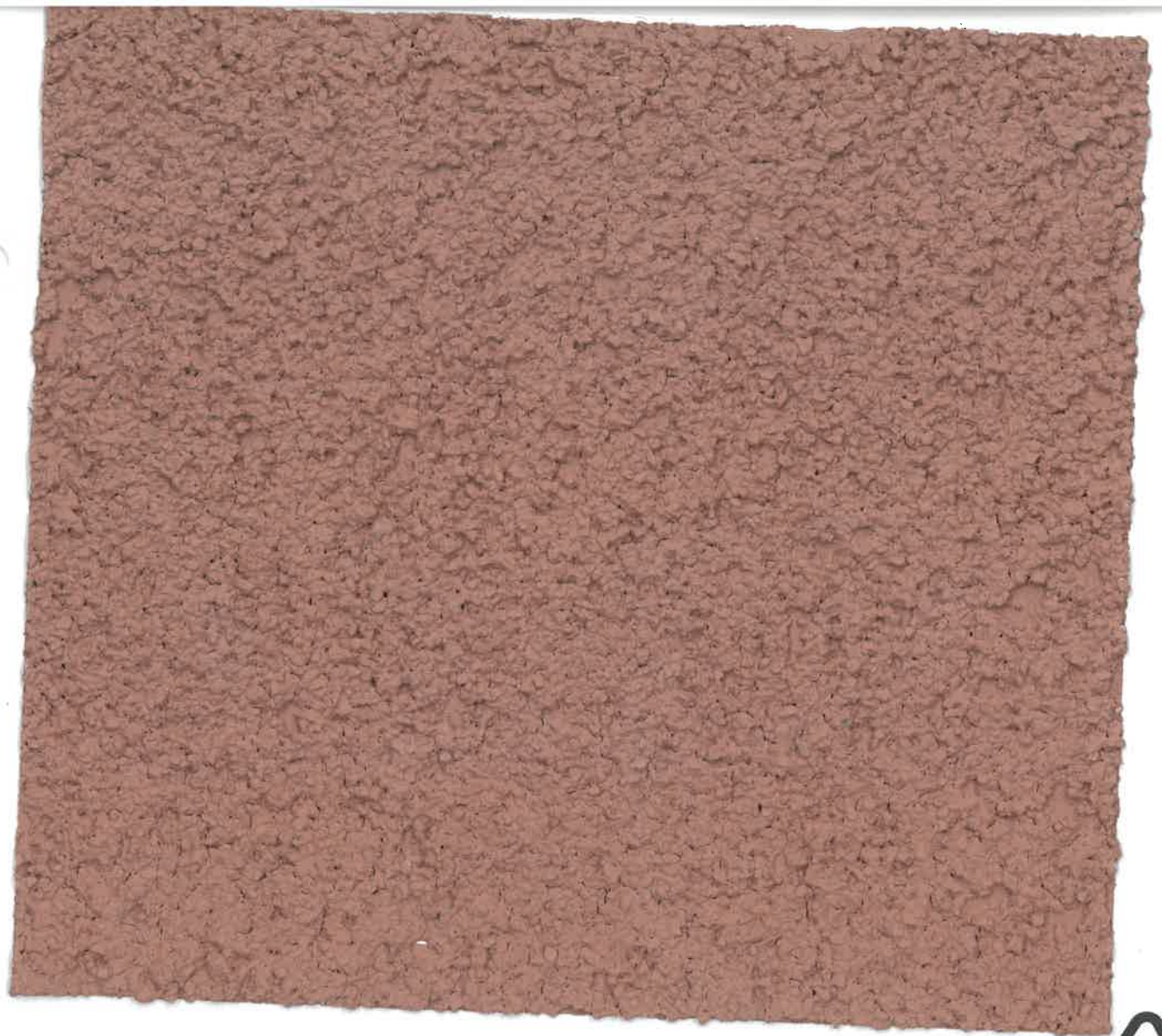


www.dryvit.com • 800-556-7752 • 401-822-4100



DE6096  
HOMESTEAD  
LRV 26  
CHROMA 3.3

DE6096  
HOMESTEAD  
LRV 26  
CHROMA 3.3



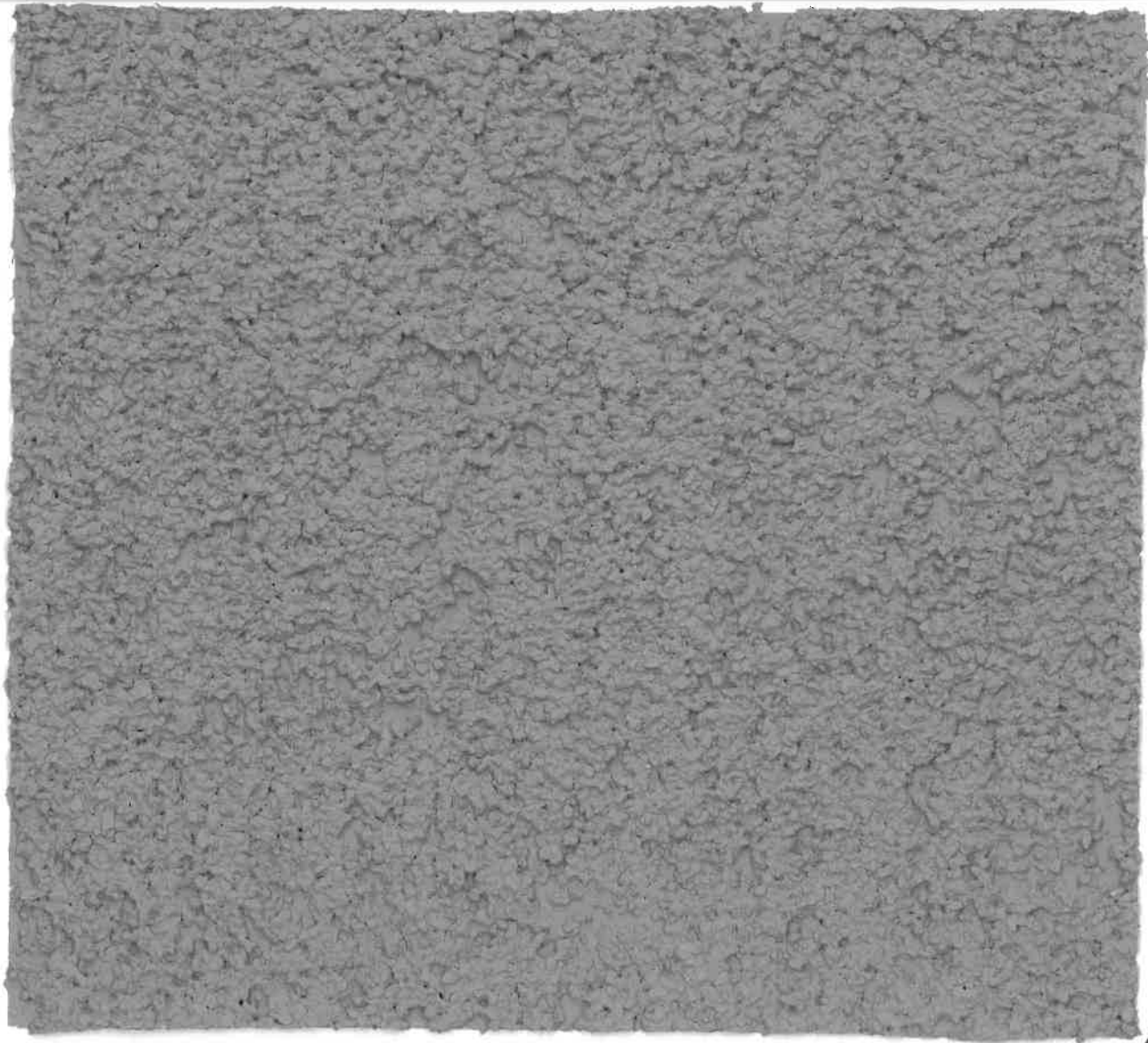
[www.dryvit.com](http://www.dryvit.com) • 800-556-7752 • 401-822-4100



DE6222  
WEATHER BOARD  
LRV 28  
CHROMA 1.7



DE6222  
WEATHER BOARD  
LRV 28  
CHROMA 1.7



[www.dryvit.com](http://www.dryvit.com) • 800-556-7752 • 401-822-4100

