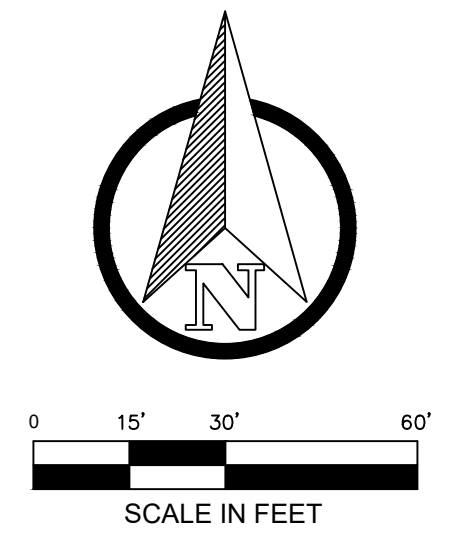


ACCESS, UTILITY & DRAINAGE EASEMENTS CURVE TABLE

CURVE #	LENGTH	RADIUS	DELTA	CHD BEARING	CHD LEN
C1	15.035'	42.00'	20.5107	S15° 07' 19"W	14.95'
C2	8.45'	8.00'	60.5000	S04° 52' 21"E	8.06'
C3	139.75'	58.00'	138.0541	S33° 54' 16"W	108.31'
C4	12.599'	58.00'	12.4459	N64° 37' 22"W	25.00'
C5	139.75'	58.00'	138.0541	N16° 51' 01"E	108.31'
C6	8.45'	8.00'	60.5000	N55° 37' 38"E	8.06'
C7	29.35'	82.00'	20.5107	N15° 07' 19"E	29.20'

ACCESS, UTILITY & DRAINAGE EASEMENTS LINE TABLE

LINE #	LENGTH	DIRECTION
L1	30.08'	S89° 11' 50"E
L2	102.27'	S04° 52' 00"W
L3	106.37'	S25° 22' 38"W
L4	58.88'	N25° 22' 38"E
L5	100.06'	N04° 52' 00"E
L6	9.90'	N50° 15' 36"W
L7	5.00'	N00° 48' 10"E
L8	38.58'	S89° 11' 50"E
L9	65.58'	S25° 22' 38"W
L10	25.23'	N72° 21' 33"W
L11	68.97'	N25° 22' 38"E



SEFTON ENGINEERING CONSULTANTS
 40 STUTZ BEARCAT DR.
 SEDONA, ARIZONA 86336
 PH: (928) 202-3999
 FAX: (888) 229-2970
 LS@SEFENCO.COM

EASEMENTS EXHIBIT

CHAPEL VIEW TERRACE
 10 SKY LINE DRIVE, SEDONA, ARIZONA

SHEET TITLE:
 PROJECT TITLE:

DRAWN BY: RJB

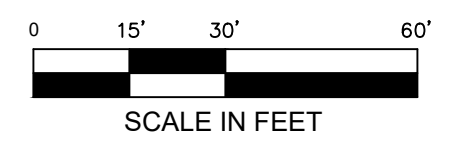
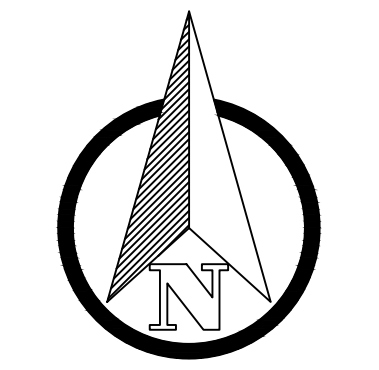
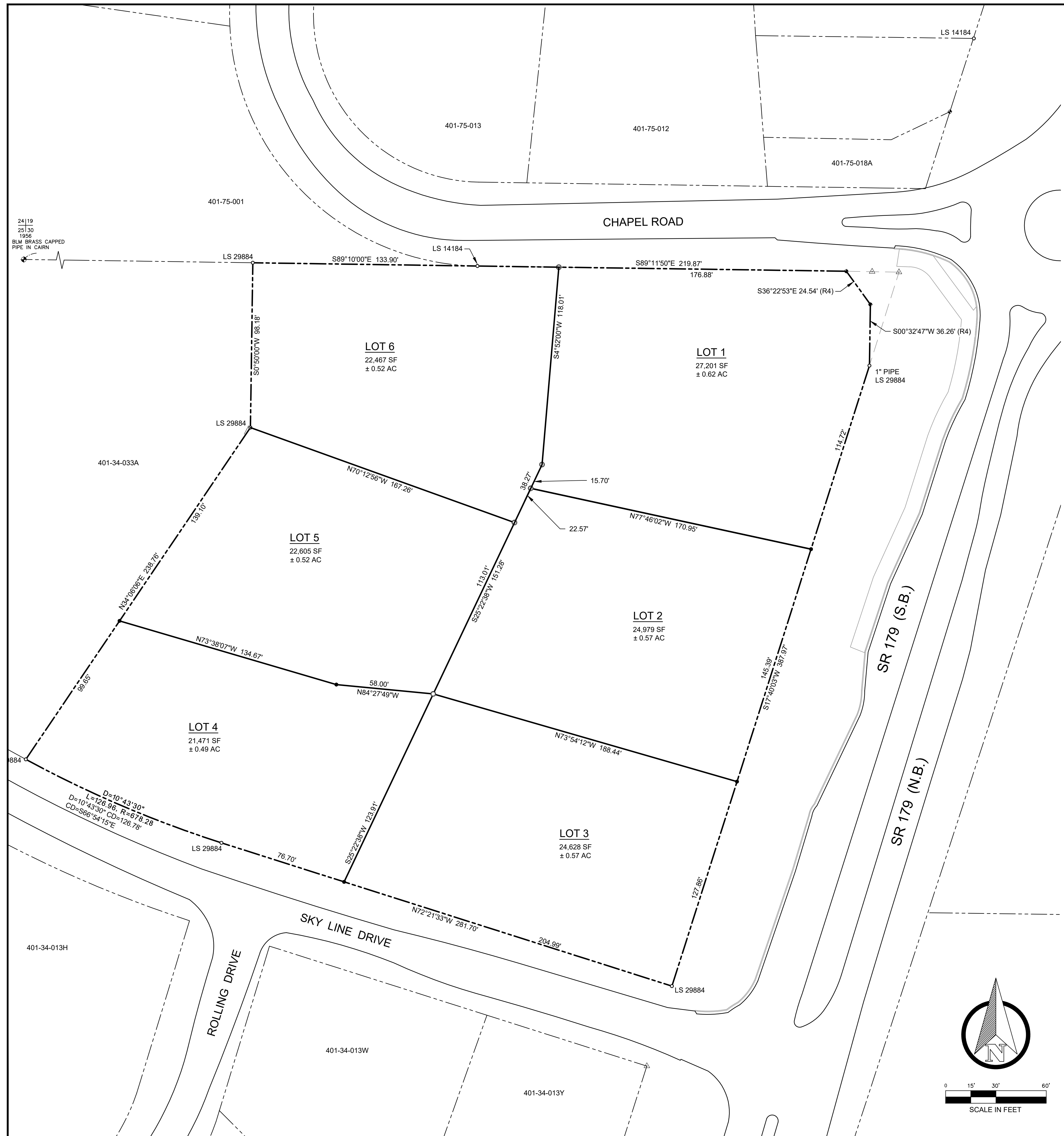
SCALE: 1" = 30'

DATE: 06/24/2022

PROJECT NO: 210305

SHEET NO. **1 OF 1**

© 2019, Sefton Engineering Consultants LLC, All Rights Reserved. This document is protected under the United States Copyright Act. No part may be reproduced in any form or by any means or stored in a database or retrieval system, without the prior written permission of Sefton Engineering Consultants, LLC. These plans/documents have been prepared using technical knowledge that would be applied by other qualified registrants who practice the same profession in the same area and at the same time. Efforts have been made to be as accurate as possible. However, plans/documents could contain unintentional technical inaccuracies, omissions, or errors. Use of these plans/documents should understand that it is highly probable that errors and omissions will occur in any plan/document preparation process, the user shall notify the registrant for clarification.



SEFTON ENGINEERING CONSULTANTS
 40 STUTZ BEARCAT DR.
 SEDONA, ARIZONA 86336
 PH: (928) 202-3999
 FAX: (888) 229-2970
 LS@SEFENCO.COM

LOT GROSS AREAS EXHIBIT

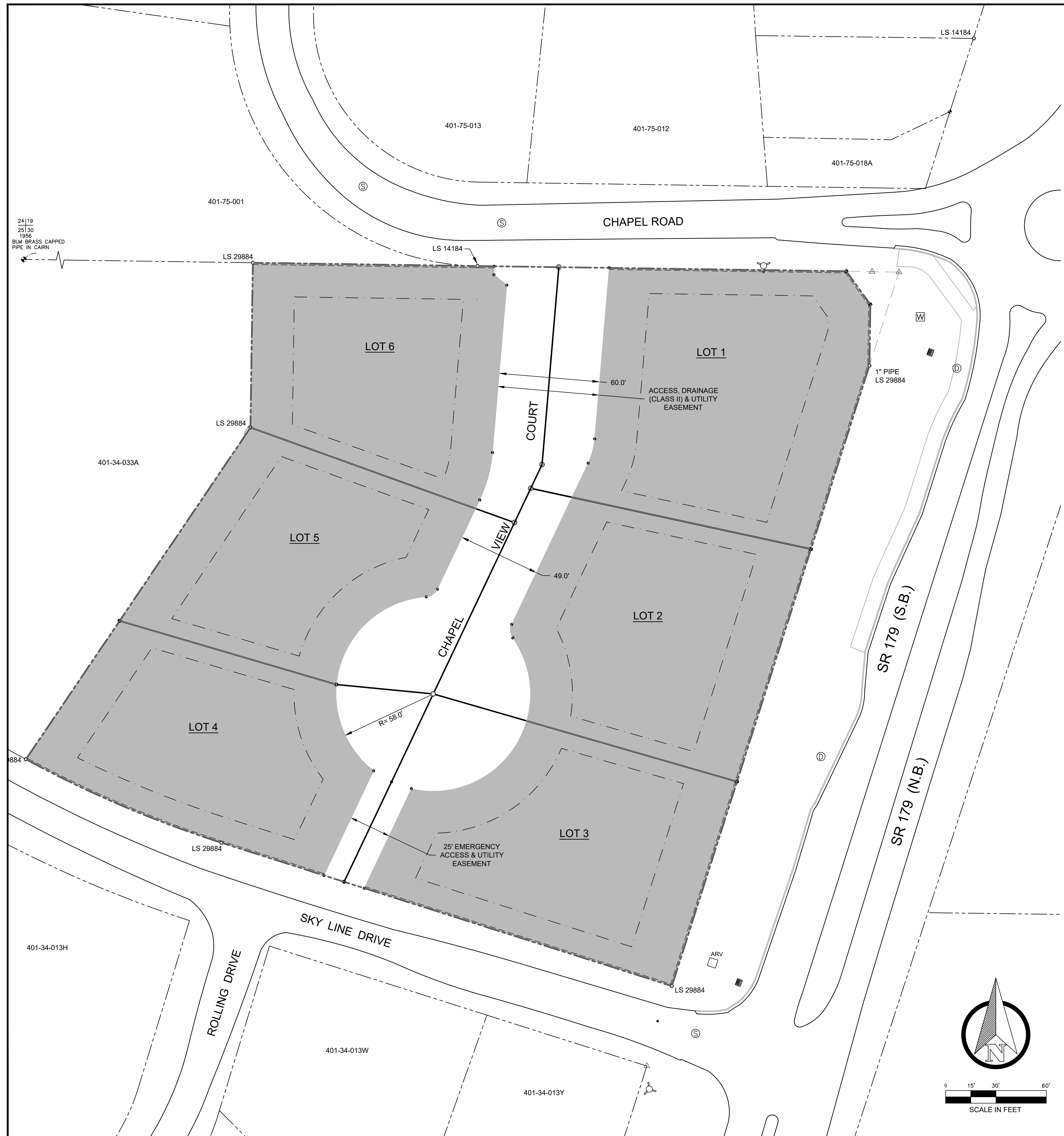
CHAPEL VIEW TERRACE

10 SKY LINE DRIVE, SEDONA, ARIZONA

SHEET TITLE:
 PROJECT TITLE:
 DRAWN BY: RJB
 SCALE: 1" = 30'
 DATE: 06/24/2022
 PROJECT NO: 210305

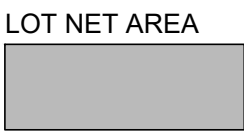
SHEET NO.
1 OF 1

© 2019, Sefton Engineering Consultants LLC, All Rights Reserved. This document is protected under the United States Copyright Act. No part may be reproduced in any form or by any means or stored in a database or retrieval system, without the prior written permission of Sefton Engineering Consultants, LLC. These plans/documents have been prepared using technical knowledge that would be applied by other qualified registrants who practice the same profession in the same area and at the same time. Efforts have been made to be as accurate as possible. However, plans/documents could contain unintentional technical inaccuracies, omissions, or errors. Users of these plans/documents should understand that it is highly probable that errors and omissions will occur in any plan/document preparation process, the user shall notify the registrant for clarification.



LOT AREAS			
LOT	GROSS	NET *	BUILDING
1	27,201	23,225	12,449
2	24,979	20,591	10,987
3	24,628	20,894	10,492
4	21,471	18,571	9,949
5	22,605	18,011	9,244
6	22,467	18,003	8,988

* NET AREA REFERS TO THE GROSS LOT AREA LESS THE ACCESS, UTILITY & DRAINAGE EASEMENT AREA.



SEFTON ENGINEERING CONSULTANTS
 40 STUTZ BEARCAT DR.
 SEDONA, ARIZONA 86336
 PH: (928) 202-3999
 FAX: (888) 229-2970
 LS@SEFENCO.COM

LOT NET AREAS EXHIBIT

CHapel VIEW TERRACE

10 SKY LINE DRIVE, SEDONA, ARIZONA

SHEET TITLE:

PROJECT TITLE:

DRAWN BY: RJB

SCALE: 1" = 30'

DATE: 06/24/2022

PROJECT NO: 210305

SHEET NO.

1 OF 1

© 2019, Sefton Engineering Consultants LLC, All Rights Reserved. This document is protected under the United States Copyright Act. No part may be reproduced in any form or by any means or stored in a database or retrieval system, without the prior written permission of Sefton Engineering Consultants, LLC. These plans/documents have been prepared using technical knowledge that would be applied by other qualified registrants who practice the same profession in the same area and at the same time. Efforts have been made to be as accurate as possible. However, plans/documents could contain unintentional technical inaccuracies, typographical errors or omissions. Users of these plans/documents should understand that it is highly probable that errors and omissions will occur in any plan/document preparation process, the user should verify the registrant for certification.