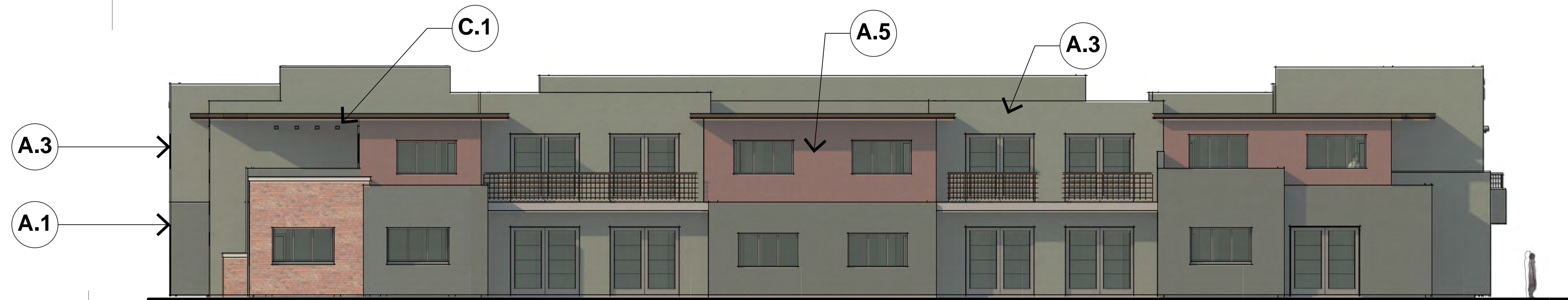


SIDE ELEVATION- 2



SIDE ELEVATION



END ELEVATION (SOUTH)



END ELEVATION (NORTH)

A.1 SW-6174	A.2 SW-6160	A.3 SW-7735
STUCCO.01- LRV.5	STUCCO.02- LRV.9	STUCCO.03- LRV.10
A.4 SW-6069	A.5 SW-6090	A.6 SW-6068
STUCCO.04- LRV.5	STUCCO.05- LRV.7	STUCCO.06- LRV.10
A.7 SW-7020	A.8 SW-7047	A.9 SW-7019
STUCCO.07- LRV.7	STUCCO.08- LRV.13	STUCCO.09- LRV.17
B.1 Roman Brick wall.1	B.2 Stone wall.1	B.3 Stone wall.2
ROMAN BRICK.01	STONE.01	STONE.02
C.1 Metal Material -1	C.2 Metal Material -2	C.3 Metal Material -3
METAL.01	METAL.02	METAL.03
D.1 Roof - Gray Metal	D.2 Roof - Slate composite	D.3 Roof - Flat
ROOF.01	ROOF.02	ROOF.03
E.1 Concrete Paving	E.2 Concrete Wall Caps	F.1 Wood Soffit
CONCRETE.01	CONCRETE.02	WOOD.01

Exterior Finish Notes:  
Paint: Sherwin Williams Paint

Stucco: Synthetic Integral Color, Sand Float Finish

Masonry: Roman Brick w/ cast concrete cap, Authentic Sedona Native Mix of River Rock & Red Cliff Stone

Fascia: Bronze Aluminum

Overhang & Canopy: Wood T&G Soffit w/ Steel Tube beams & columns.

Window / Door Frame: Bronze Aluminum

Low Slope Roof: Seamless w/ Acrylic Finish SW7047 - LRV-13

Pitch Roof: Raised Seamed Metal w/ Matching Fascia Trim (Treehouse)  
Gray terracotta roof tile 'Ludowici', Ludoslate (Multi-Family)

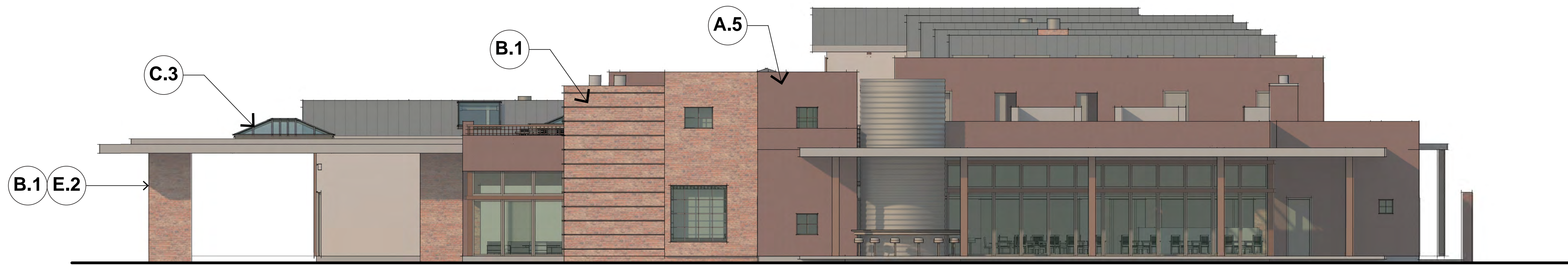
Handrails / Guardrails: Painted metal railings  
(steel pipe frame w/ perforated metal panel)

Concrete Paving: Integral Color Exposed Sand Finish w/ Scoring

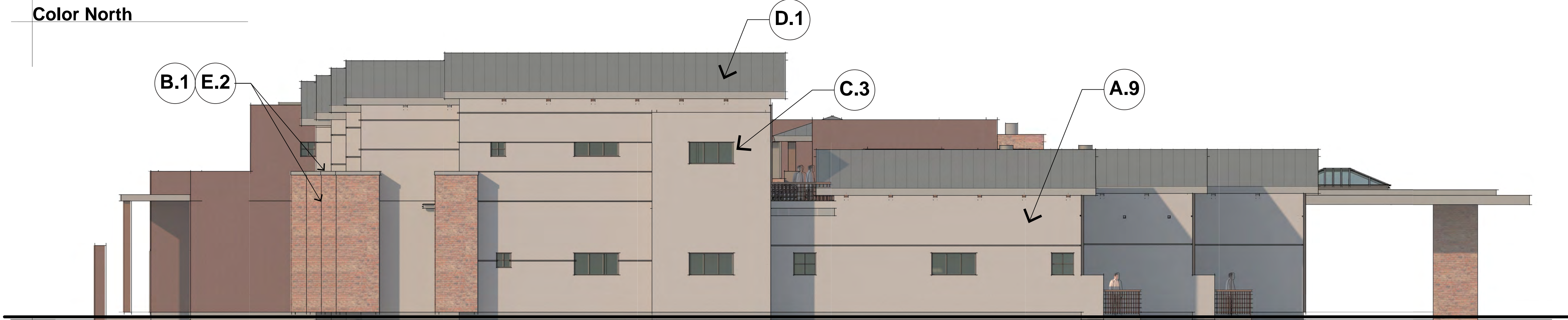
**Color Elevations**  
**the Village at Saddlerock Crossing**  
**Soldiers Pass Road & Highway 89A**  
**Sedona Arizona**

Stephen Thompson Architect. Sedona/Del Mar  
Studio@StephenThompsonArchitect.com  
C: 928.301.5922 10/15/2021 4:17/2021 4:21:44 PM

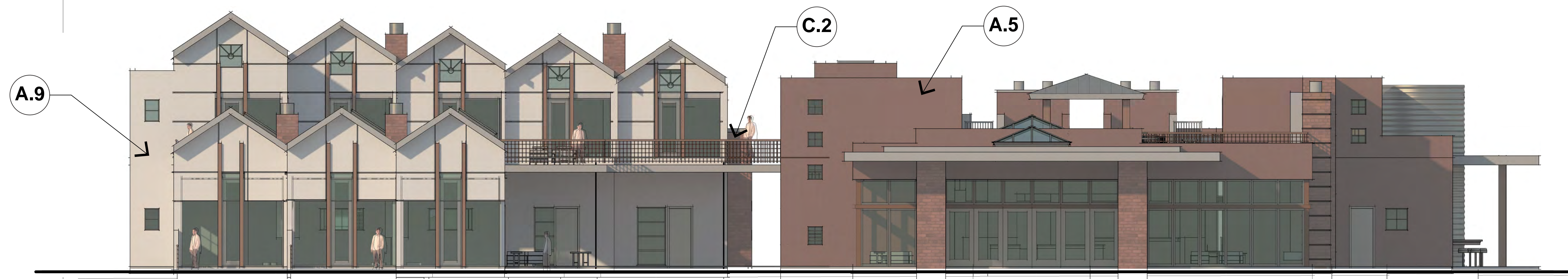




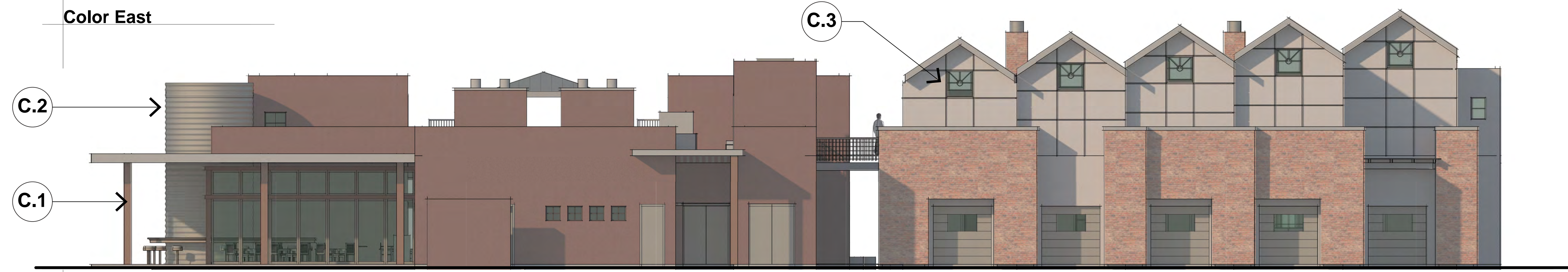
Color North



Color South-



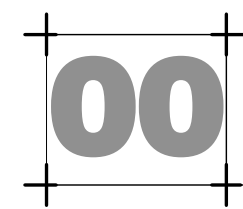
Color East

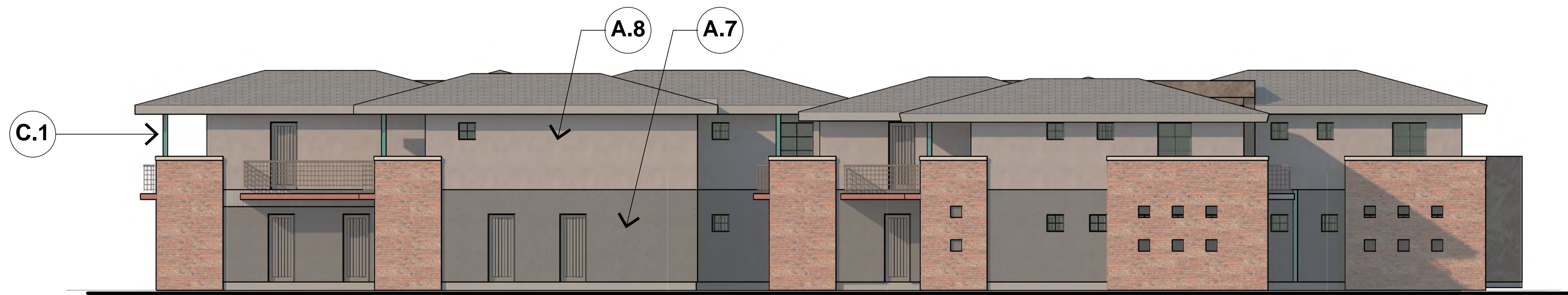


Color West

<b>A.1</b> SW-6174	<b>A.2</b> SW-2846	<b>A.3</b> SW-7735
<b>STUCCO.01-LRV.5</b>	<b>STUCCO.02-LRV.9</b>	<b>STUCCO.03-LRV.10</b>
<b>A.4</b> SW-6069	<b>A.5</b> SW-6090	<b>A.6</b> SW-6068
<b>STUCCO.04-LRV.5</b>	<b>STUCCO.05-LRV.7</b>	<b>STUCCO.06-LRV.10</b>
<b>A.7</b> SW-7020	<b>A.8</b> SW-7047	<b>A.9</b> SW-7019
<b>STUCCO.07-LRV.7</b>	<b>STUCCO.08-LRV.13</b>	<b>STUCCO.09-LRV.17</b>
<b>B.1</b> Roman Brick wall.1	<b>B.2</b> Stone wall.1	<b>B.3</b> Stone wall.2
<b>ROMAN BRICK.01</b>	<b>STONE.01</b>	<b>STONE.02</b>
<b>C.1</b> Metal Material -1	<b>C.2</b> Metal Material -2	<b>C.3</b> Metal Material -3
<b>METAL.01</b>	<b>METAL.02</b>	<b>METAL.03</b>
<b>D.1</b> Roof - Gray Metal	<b>D.2</b> Roof - Slate composite	<b>D.3</b> Roof - Flat
<b>ROOF.01</b>	<b>ROOF.02</b>	<b>ROOF.03</b>
<b>E.1</b> Concrete Paving	<b>E.2</b> Concrete Wall Caps	<b>F.1</b> Wood Soffit
<b>CONCRETE.01</b>	<b>CONCRETE.02</b>	<b>WOOD.01</b>

**Exterior Finish Notes:**  
 Paint: Sherwin Williams Paint  
 Stucco: Synthetic Integral Color, Sand Float Finish  
 Masonry: Roman Brick w/ cast concrete cap, Authentic Sedona Native Mix of River Rock & Red Cliff Stone  
 Fascia: Bronze Aluminum  
 Overhang & Canopy: Wood T&G Soffit w/ Steel Tube beams & columns.  
 Window / Door Frame: Bronze Aluminum  
 Low Slope Roof: Seamless w/ Acrylic Finish SW7047 - LRV-13  
 Pitch Roof: Raised Seamed Metal w/ Matching Fascia Trim (Treehouse) Gray terracotta roof tile 'Ludowici', Ludoslate (Multi-Family)  
 Handrails / Guardrails: Painted metal railings (steel pipe frame w/ perforated metal panel)  
 Concrete Paving: Integral Color Exposed Sand Finish w/ Scoring





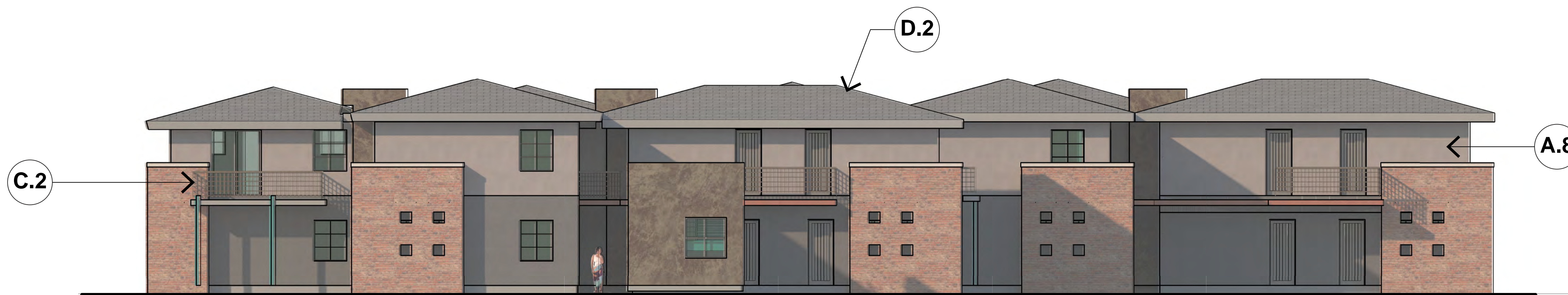
Color - West



Color - East



Color - North

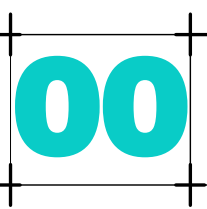


Color - South

A.1 SW-6174	A.2 SW-2846	A.3 SW-7735
STUCCO.01- LRV.5	STUCCO.02- LRV.9	STUCCO.03- LRV.10
A.4 SW-6069	A.5 SW-6090	A.6 SW-6068
STUCCO.04- LRV.5	STUCCO.05- LRV.7	STUCCO.06- LRV.10
A.7 SW-7020	A.8 SW-7047	A.9 SW-7019
STUCCO.07- LRV.7	STUCCO.08- LRV.13	STUCCO.09- LRV.17
B.1 Roman Brick wall.1	B.2 Stone wall.1	B.3 Stone wall.2
ROMAN BRICK.01	STONE.01	STONE.02
C.1 Metal Material -1	C.2 Metal Material -2	C.3 Metal Material -3
METAL.01	METAL.02	METAL.03
D.1 Roof - Gray Metal	D.2 Roof - Slate composite	D.3 Roof - Flat
ROOF.01	ROOF.02	ROOF.03
E.1 Concrete Paving	E.2 Concrete Wall Caps	F.1 Wood Soffit
CONCRETE.01	CONCRETE.02	WOOD.01

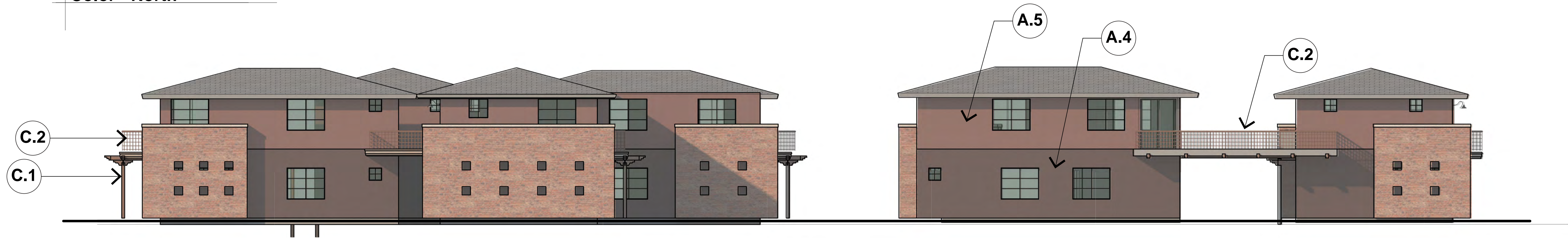
Exterior Finish Notes:  
 Paint: Sherwin Williams Paint  
 Stucco: Synthetic Integral Color, Sand Float Finish  
 Masonry: Roman Brick w/ cast concrete cap, Authentic Sedona Native Mix of River Rock & Red Cliff Stone  
 Fascia: Bronze Aluminum  
 Overhang & Canopy: Wood T&G Soffit w/ Steel Tube beams & columns.  
 Window / Door Frame: Bronze Aluminum  
 Low Slope Roof: Seamless w/ Acrylic Finish SW7047 - LRV-13  
 Pitch Roof: Raised Seamed Metal w/ Matching Fascia Trim (Treehouse) Gray terracotta roof tile 'Ludowici', Ludoslate (Multi-Family)  
 Handrails / Guardrails: Painted metal railings (steel pipe frame w/ perforated metal panel)  
 Concrete Paving: Integral Color Exposed Sand Finish w/ Scoring

**MF North - Color**  
**the Village at Saddlerock Crossing**  
 Soldiers Pass Road & Highway 89A  
 Sedona Arizona





Color - North



Color - South



Color - West



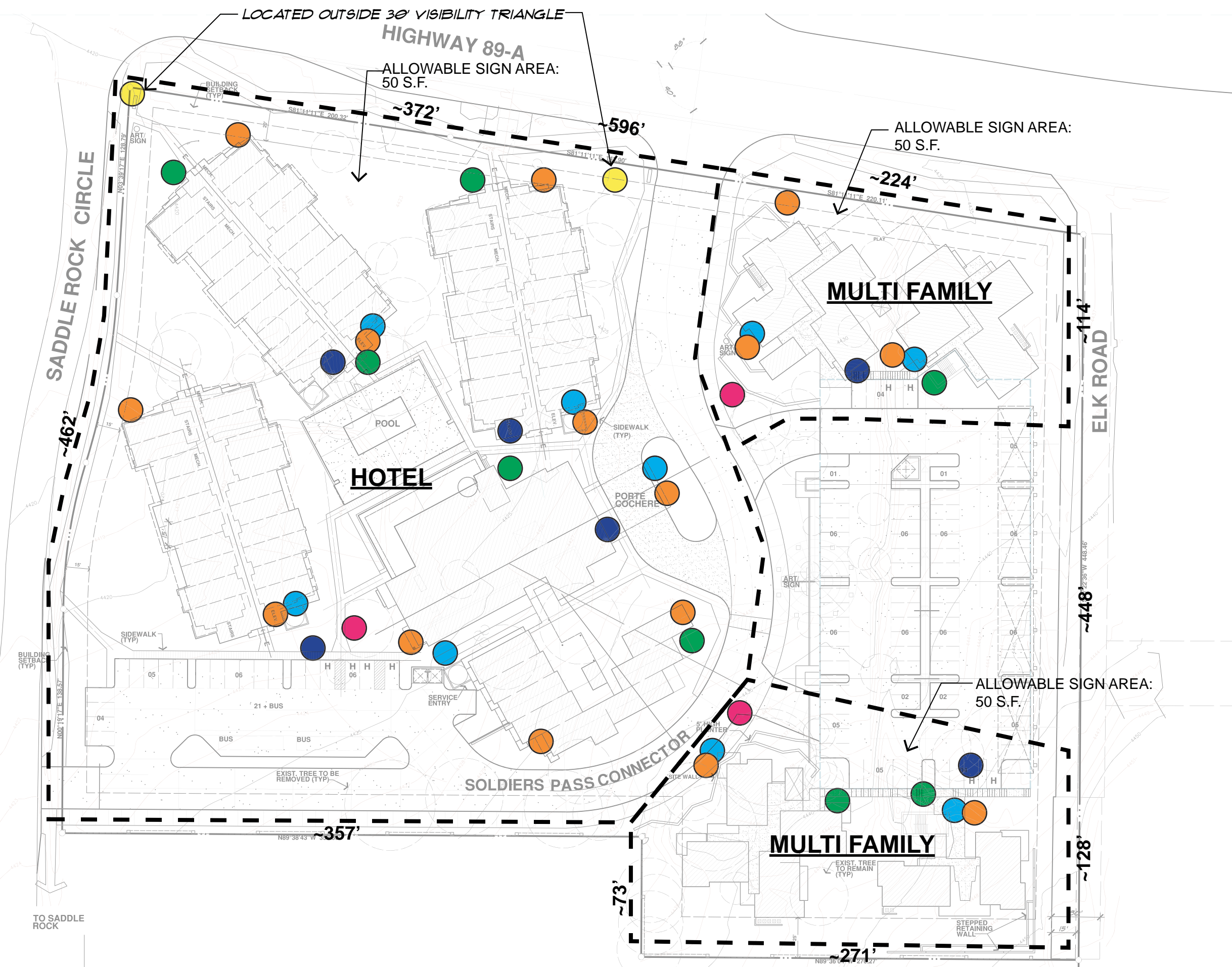
Color - East

# Master Sign Plan

- **MONUMENT SIGNS**  
Saddlerock/ 89A Intersection
  
- **BUILDING SIGNAGE**  
Building Mounted/ Business Tenant Signs  
Cutout metal letters, indirectly lit with integral lighting of concealed source.
  
- **\*STREET ADDRESS SIGNS**  
Building Mounted  
Addressing as required by fire code requirements.  
\* Exempted from the permit process.
  
- **\*INFORMATION SIGNS**  
Freestanding  
Low-level and integrated into paving or landscape context and of color & material to harmonize with project design. It will not be visible from off site areas. General circulation lighting is expected to illuminate this signage.  
\* Exempted from the permit process.
  
- **ON-SITE DIRECTORY SIGNS**  
Freestanding  
Sign permit required per city code.
  
- **\*ACCESSIBILITY SIGNS**  
Various  
ADA Parking, Building Entry, Restrooms  
Where required by ADA and code requirements.  
\* Exempted from the permit process.

**SUMMARY OF SIGNAGE**

QTY	TYPE	LOCATION	AREA	HT.
2	MONUMENT SIGNS	Saddlerock/ 89A Intersection	25	8'
		North Entry (89A)	25	8'
9	BUILDING SIGNAGE	Hotel Lobby	18	16'
		Treehouse Suites	8	16'
		Hotel Guest Rooms - East Wing	8	25'
		Hotel Guest Rooms - West Wing	8	25'
		Hotel Guest Rooms - North Wing	8	25'
		Multi-Family - South	40	15'
		Multi-Family - North	40	15'
15	STREET ADDRESS SIGNS	All buildings, per fire code.		
8	INFORMATION SIGNS	As indicated on plan.	16	3'
3	ON-SITE DIRECTORY SIGNS	Hotel & Multi-Family Properties	6	6'
As req'd per ADA	ACCESSIBILITY SIGNS	Throughout site as req'd per ADA		

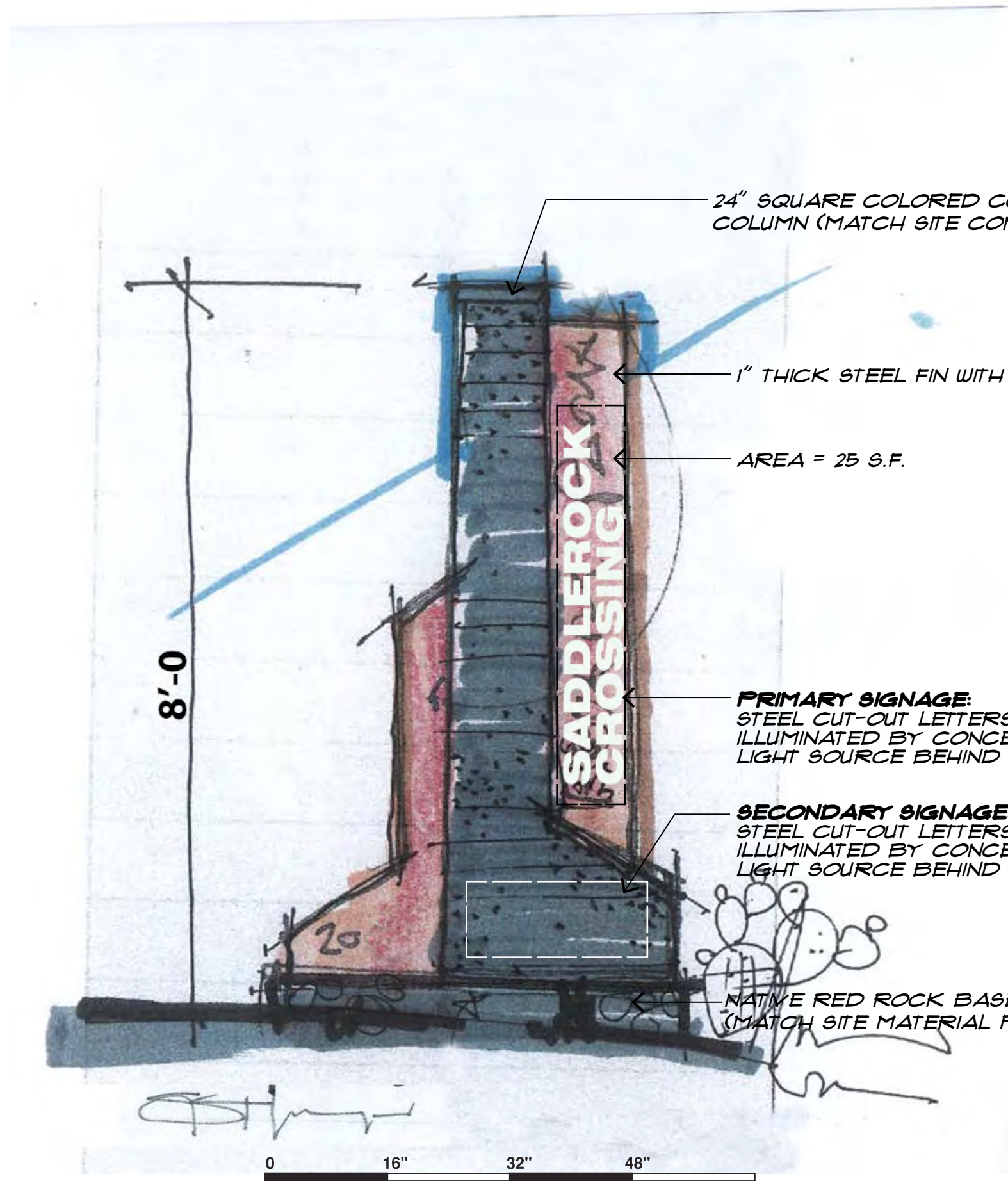


**MASTER SIGN PLAN**

1"=30'-0"  
 0 30 60 90  
**TOTAL SITE AREA= 6.36 ACRES**

**the Village at Saddlerock Crossing**  
 Soldiers Pass Road & Highway 89A  
 Sedona Arizona

Stephen Thompson Architect. Sedona/Del Mar  
 Studio@StephenThompsonArchitect.com  
 C: 928.301.5922 12/20/2021 3/19/2021 4:32:58 PM



24" SQUARE COLORED CONCRETE COLUMN (MATCH SITE CONCRETE)

1" THICK STEEL FIN WITH FINISHED EDGE

AREA = 25 S.F.

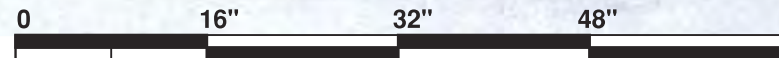
8'-0"

SADDLEROCK CROSSING

**PRIMARY SIGNAGE:**  
STEEL CUT-OUT LETTERS-  
ILLUMINATED BY CONCEALED  
LIGHT SOURCE BEHIND SIGNAGE)

**SECONDARY SIGNAGE:**  
STEEL CUT-OUT LETTERS-  
ILLUMINATED BY CONCEALED  
LIGHT SOURCE BEHIND SIGNAGE)

NATIVE RED ROCK BASE  
(MATCH SITE MATERIAL PALETTE)

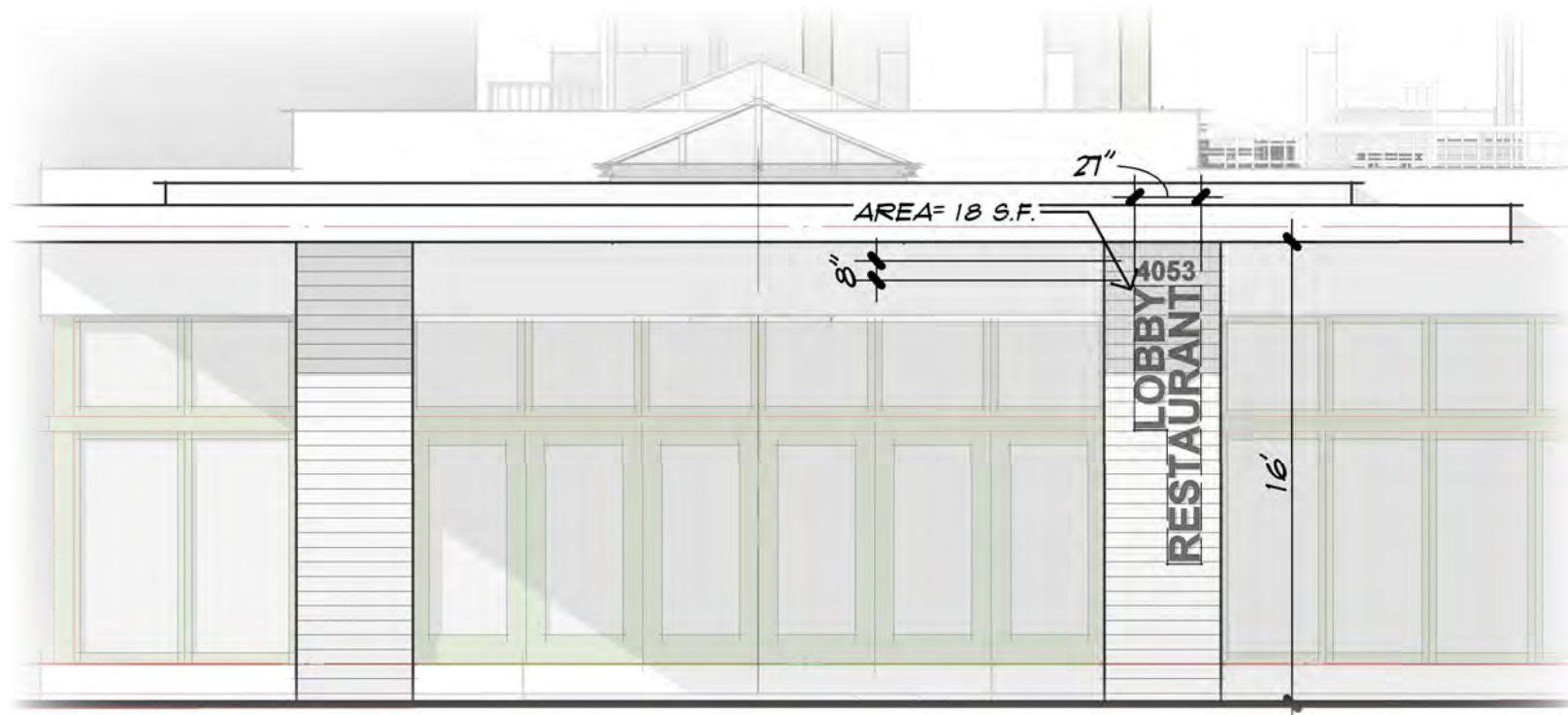


# MONUMENT SIGNAGE

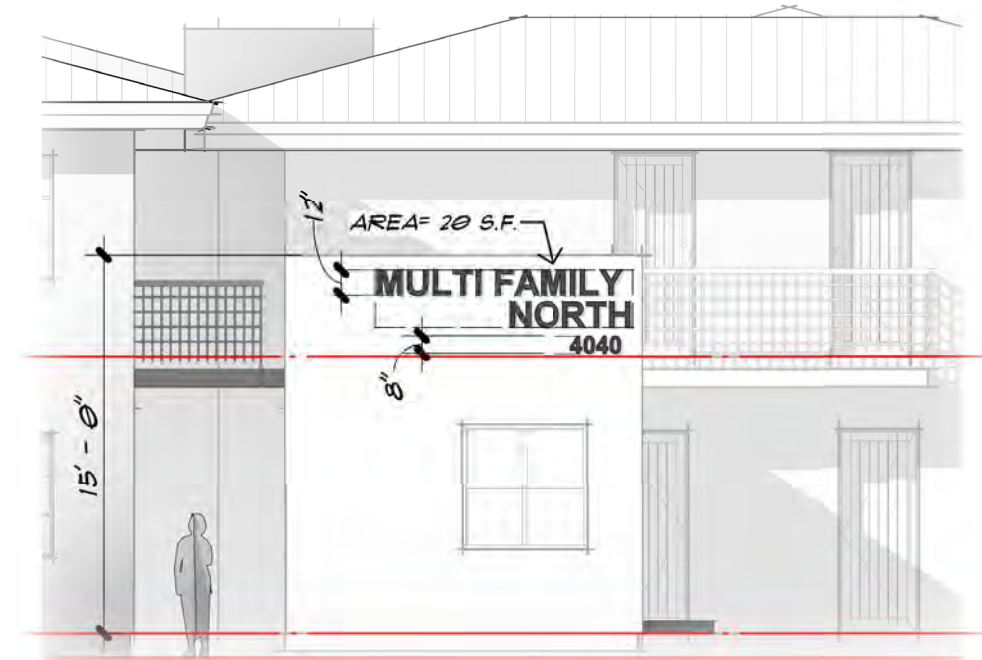
LOCATED OUTSIDE 30' VISIBILITY TRIANGLE  
FONT AND FINISH TO COMPLEMENT OTHER SITE SIGNAGE.

**the Village at Saddlerock Crossing**  
Soldiers Pass Road & Highway 89A  
Sedona Arizona

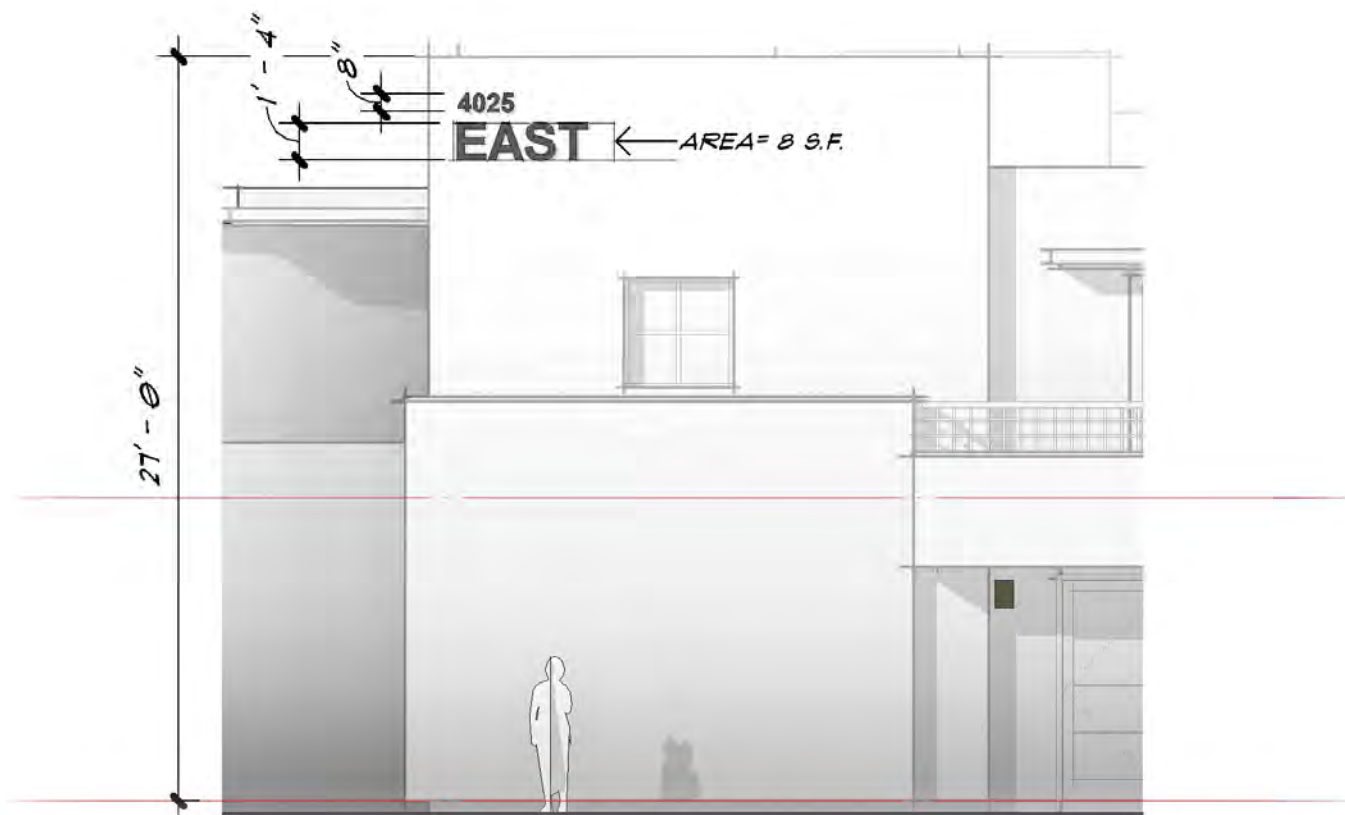
Stephen Thompson Architect. Sedona/Del Mar  
Studio@StephenThompsonArchitect.com  
C: 928.301.5922 12/20/2021 3/19/2021 4:32:58 PM



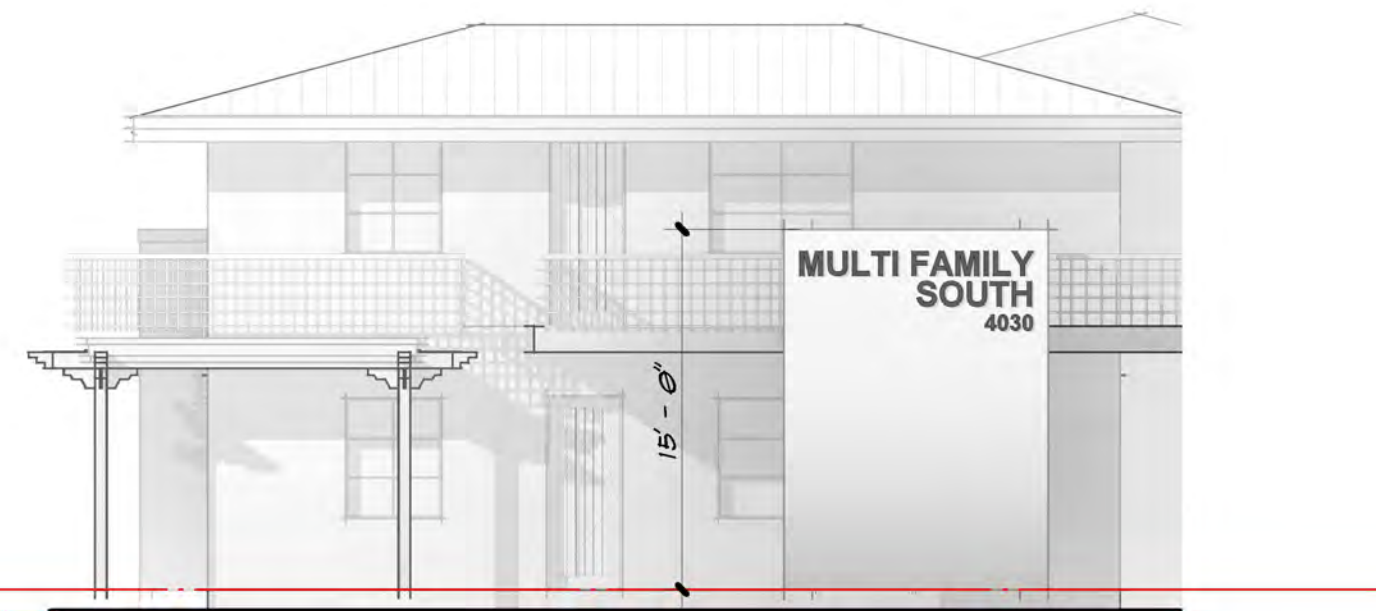
**LOBBY BUILDING**



**MULTI-FAMILY NORTH**



**TYP. GUEST ROOM WING**



**MULTI-FAMILY SOUTH**

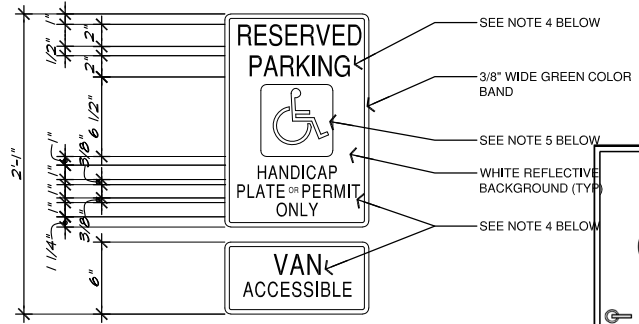
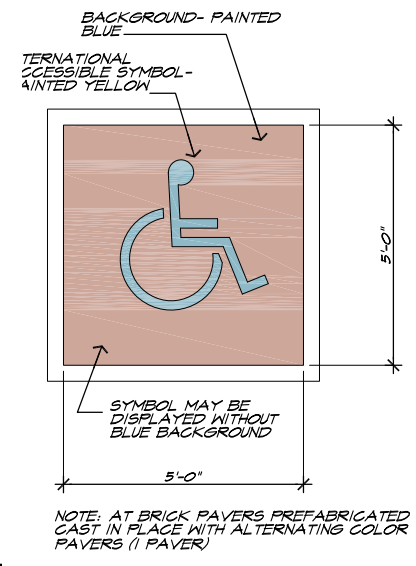
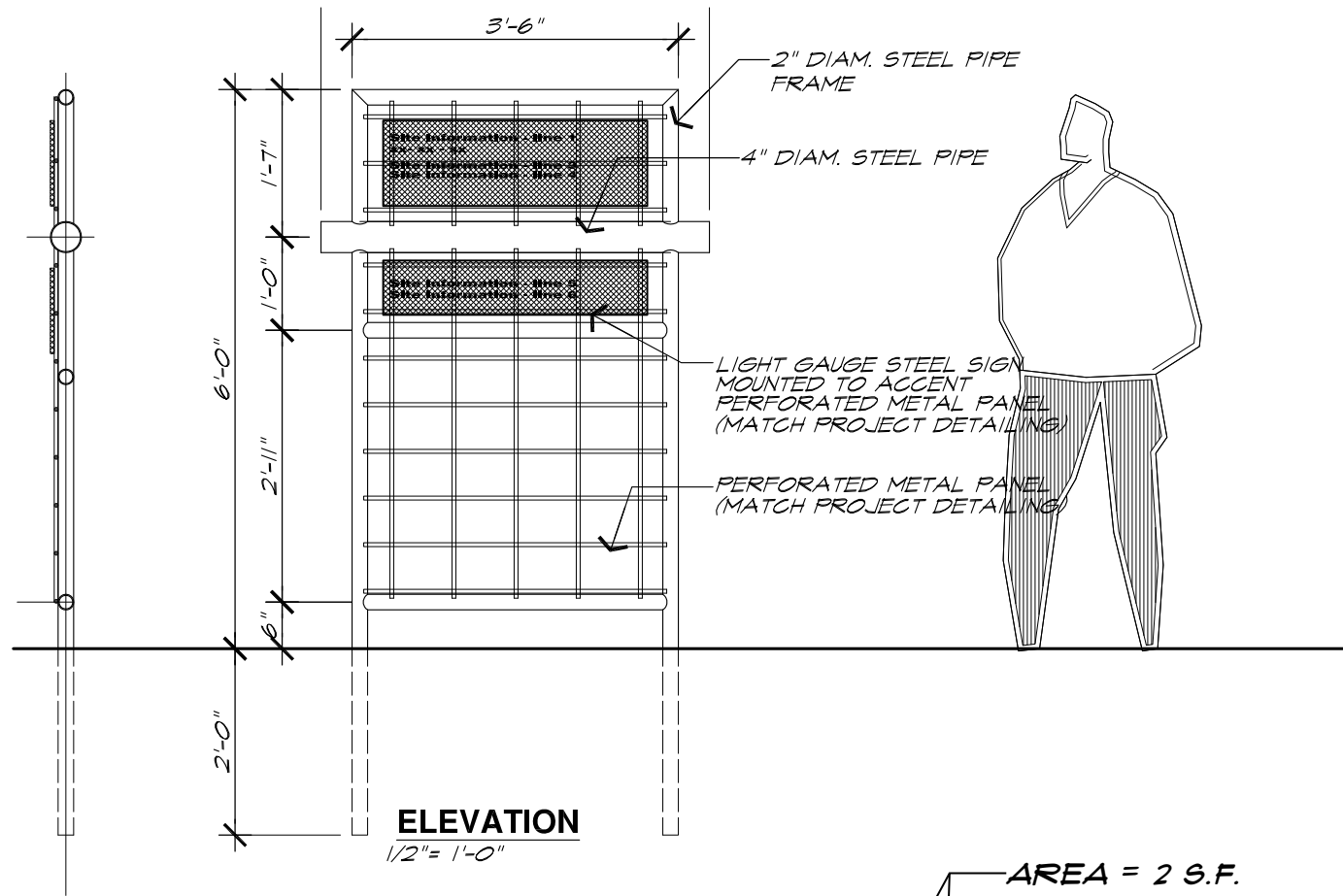
**BUILDING SIGNAGE**

FONT AND FINISH TO COMPLEMENT OTHER SITE SIGNAGE.

**the Village at Saddlerock Crossing**  
 Soldiers Pass Road & Highway 89A  
 Sedona Arizona

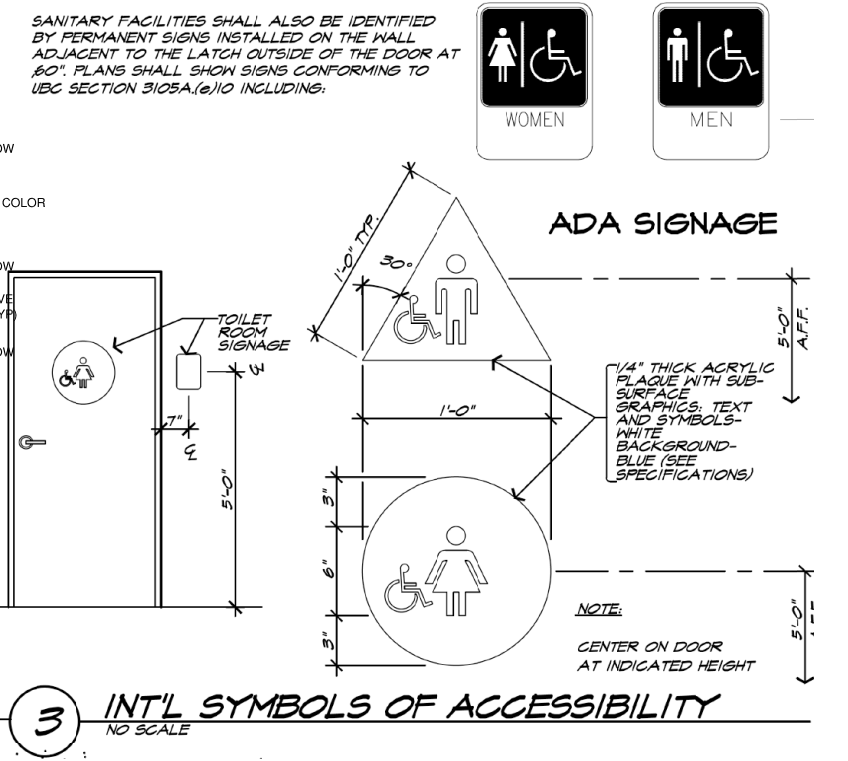
Stephen Thompson Architect. Sedona/Del Mar  
 Studio@StephenThompsonArchitect.com  
 C: 928.301.5922 12/20/2021 3/19/2021 4:32:58 PM



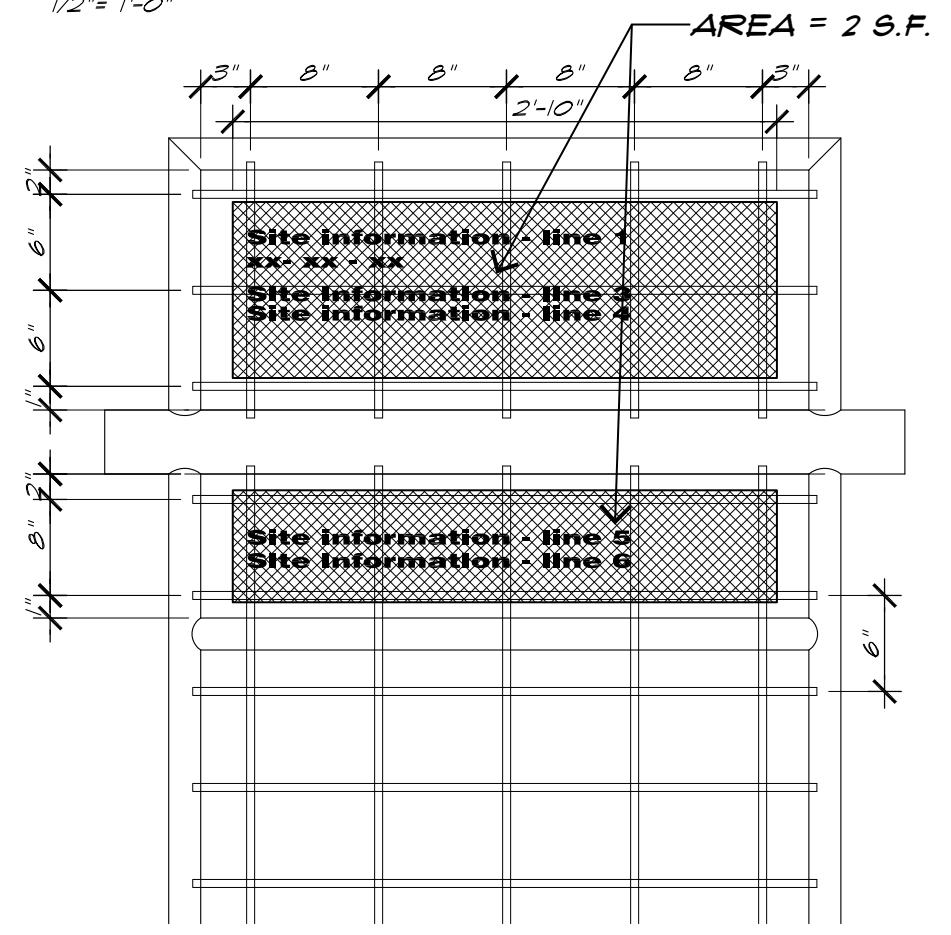


1. BOTTOM OF SIGN SHALL BE NO LESS THAN 36 INCHES AND MORE THAN 54 INCHES ABOVE FIN. GRADE
2. SIGNS SHALL BE PROPERLY CENTERED WITHIN THE PARKING SPACE
3. SIGN FACE SHALL BE LOCATED NO FARTHER THAN 6'-0" FROM THE FRONT OF EACH PARKING SPACE
4. ALL LETTERING SERIES 'C' GREEN COLOR.
5. INTERNATIONAL SYMBOL OF ACCESSIBILITY SHOWN WHITE ON 6" X 6" BLUE FIELD W/ 1/2" RADIUS CORNERS.

3 ACCESSIBLE PARKING SYMBOL  
1/2" = 1'-0"



**ACCESSIBILITY SIGNAGE**

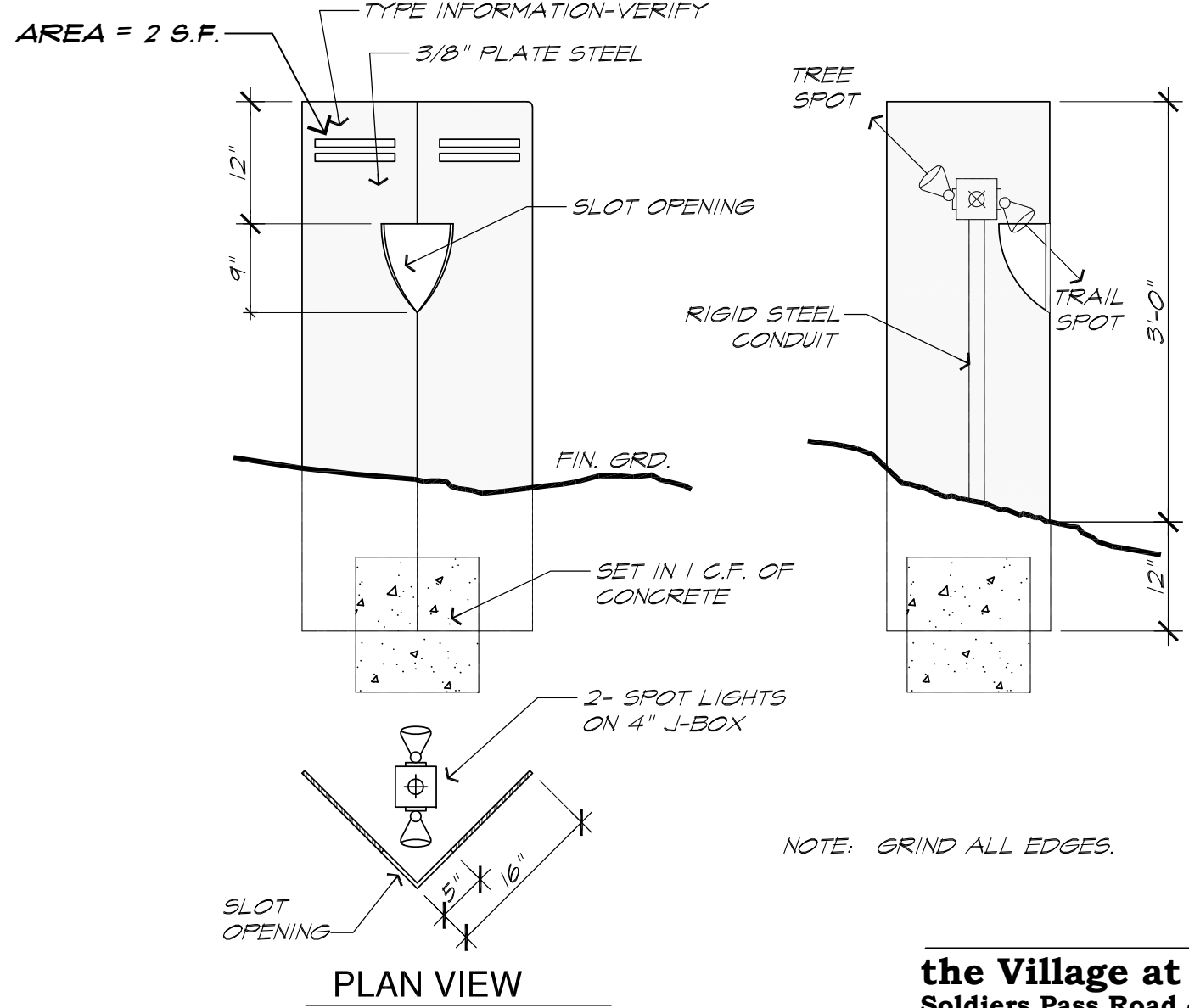


**SITE SIGNAGE**

2021

**DIRECTORY SIGNAGE**

FONT AND FINISH TO COMPLEMENT OTHER SITE SIGNAGE.



**INFORMATION SIGNAGE**

FONT AND FINISH TO COMPLEMENT OTHER SITE SIGNAGE.

**the Village at Saddlerock Crossing**  
Soldiers Pass Road & Highway 89A  
Sedona Arizona

Stephen Thompson Architect. Sedona/Del Mar  
Studio@StephenThompsonArchitect.com  
C: 928.301.5922 12/20/2021 3/19/2021 4:32:58 PM