

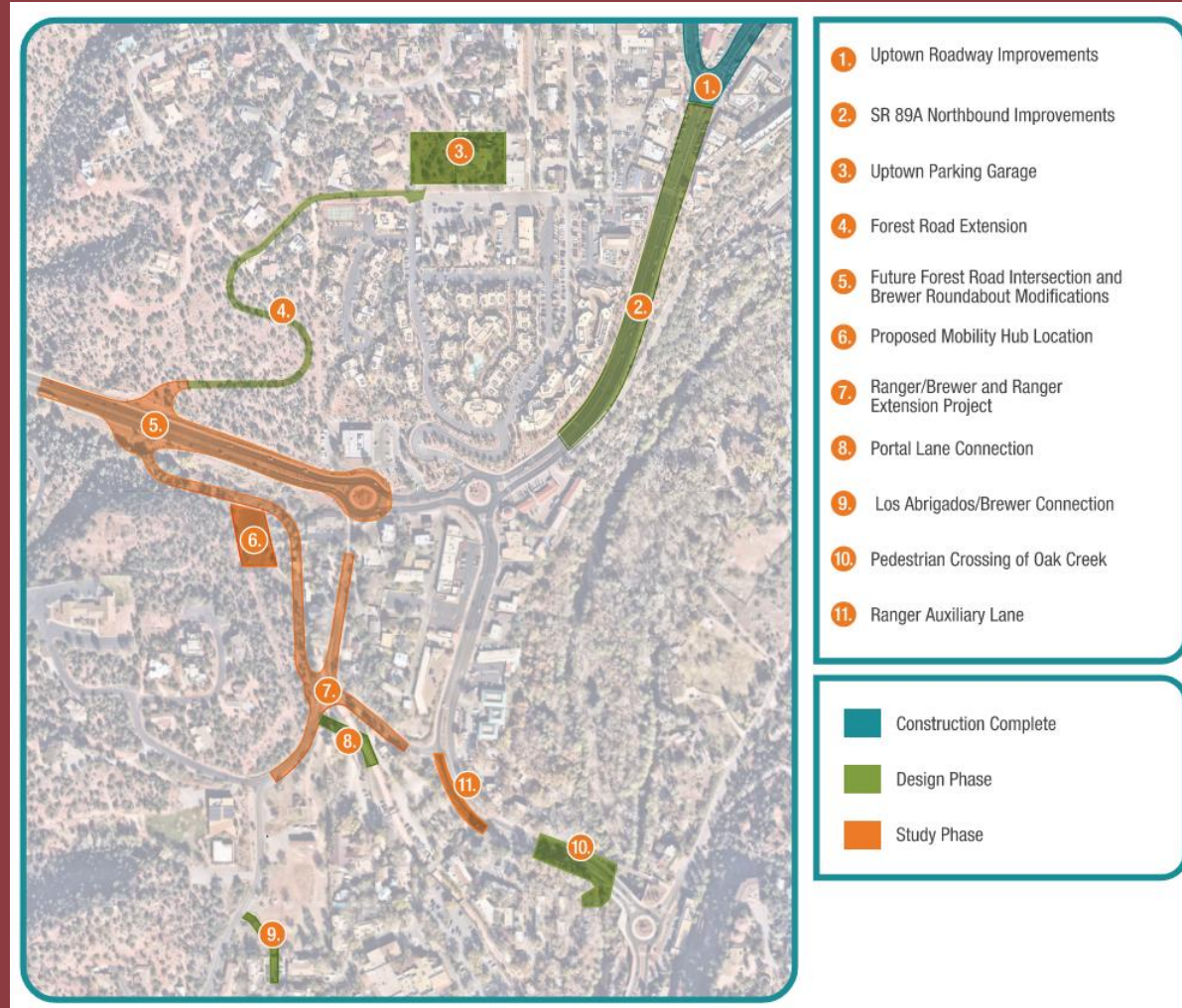


SEDONA ^{IN} MOTION

SETTING INTO MOTION THE CITY OF SEDONA'S
TRANSPORTATION MASTER PLAN

Ranger/SR-89A Corridor

SEDONA IN MOTION



Brewer/SR-89A Corridor



BREWER / 89-A CORRIDOR
SEDONA, AZ



Corridor Renderings



Corridor Renderings



Corridor Renderings



Corridor Renderings



Corridor Renderings



R.I.D.E PARK

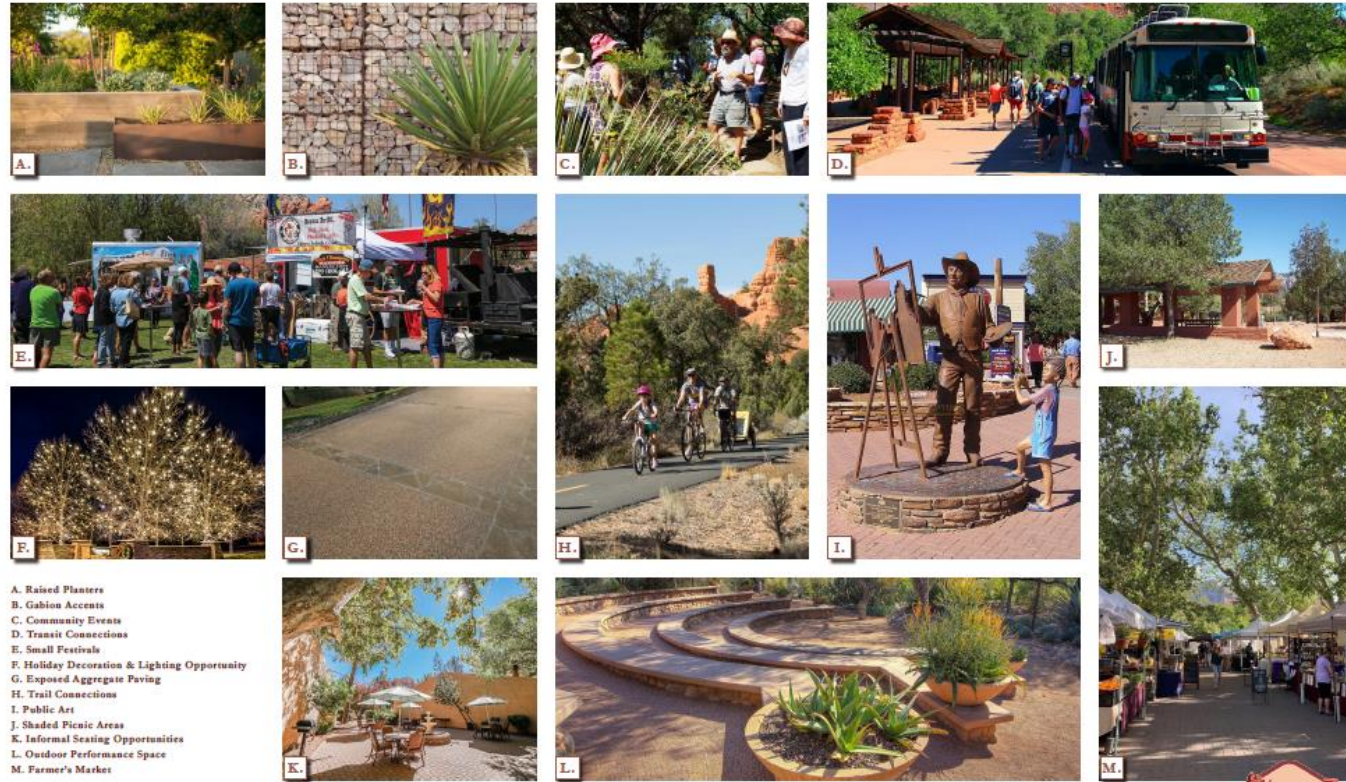
- Objectives of a Mobility Hub
 - Provides efficient and seamless integration of sustainable transportation
 - Focuses on improving user experience of different transportation options
 - Ensures safety and security for all travelers
 - Creates a sense of place through effective and meaningful placemaking strategies
 - Creates opportunities to form effective partnerships



R.I.D.E. PARK



06.20.2022



- A. Raised Planters
- B. Gabion Accents
- C. Community Events
- D. Transit Connections
- E. Small Festivals
- F. Holiday Decoration & Lighting Opportunity
- G. Exposed Aggregate Paving
- H. Trail Connections
- I. Public Art
- J. Shaded Picnic Areas
- K. Informal Seating Opportunities
- L. Outdoor Performance Space
- M. Farmer's Market



SEDONA MOBILITY PARK
IMAGERY & IDEAS





R.I.D.E. PARK

- Provides efficient and seamless integration of sustainable transportation
- Focuses on improving user experience of different transportation options
- Ensures safety and security for all travelers
- Creates a sense of place through effective and meaningful placemaking strategies
- Creates opportunities to form effective partnerships

Redrock (R) – There is no better sense of place than when surrounded by the Red Rocks of Sedona.

Intermodal (I) – The very definition of different options of transportation.

Depot (D) – A central hub in the heart of Sedona that is both safe and secure

Exchange (E) – Allows for the seamless integration when exchange one mode of transportation to another (ie: Exchange your Bike for Bus to travel to the Canyon)

PARK– Grounds the sense of place in the heart of Sedona. Activates the Space to draws people in rather than a pass-through transit hub.





Forest / Ranger / 89A Study

- Study Complete
- Recommend Two Lane Roundabout with Alternative Dedicated Bus Lane



Figure 3.6 – Urban Double Lane with Transit Lane at EB Approach



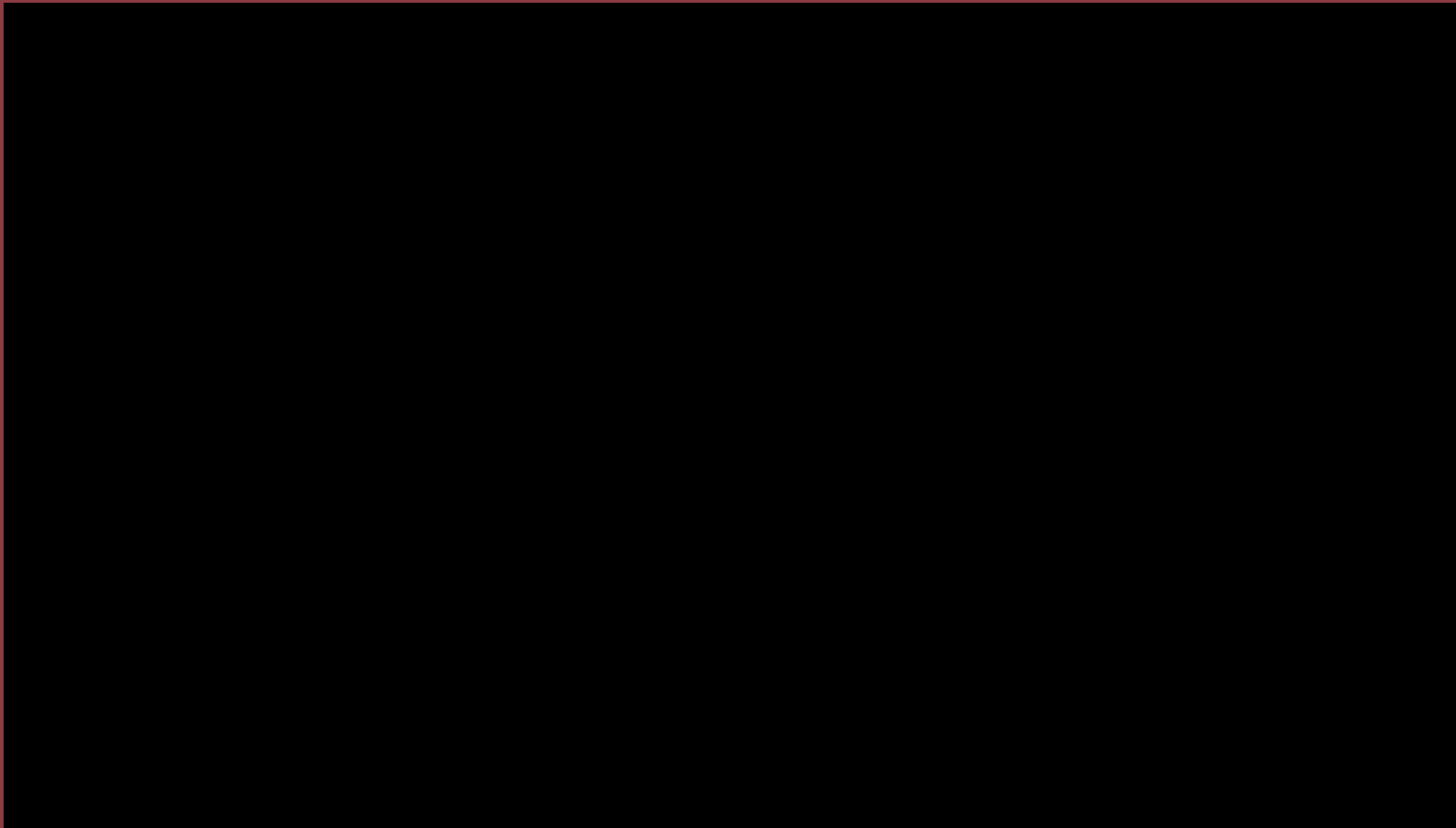
Forest / Ranger / 89A Study

- Modeling Results

Intersection and Approach, Delay and LOS Comparison								
#	Intersection	Approach	Forest/Ranger RAB		Forest/Ranger Signalized		Forest/Ranger RAB with Transit Lane	
			DELAY	LOS	DELAY	LOS	DELAY	LOS
1	Forest/Ranger/SR 89A	NB	41.9	E	38.4	E	742.3	F
		SB	34.7	D	6.4	A	28.8	D
		EB	1.9	A	13.0	B	11.1	B
		WB	2.2	A	8.9	A	1.9	A
		Intersection	5.5	A	12.8	B	43.8	E



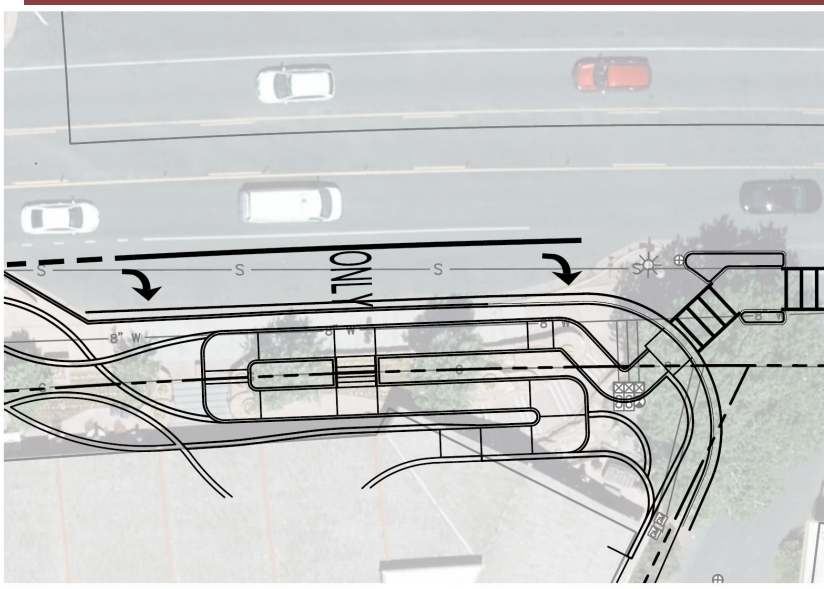
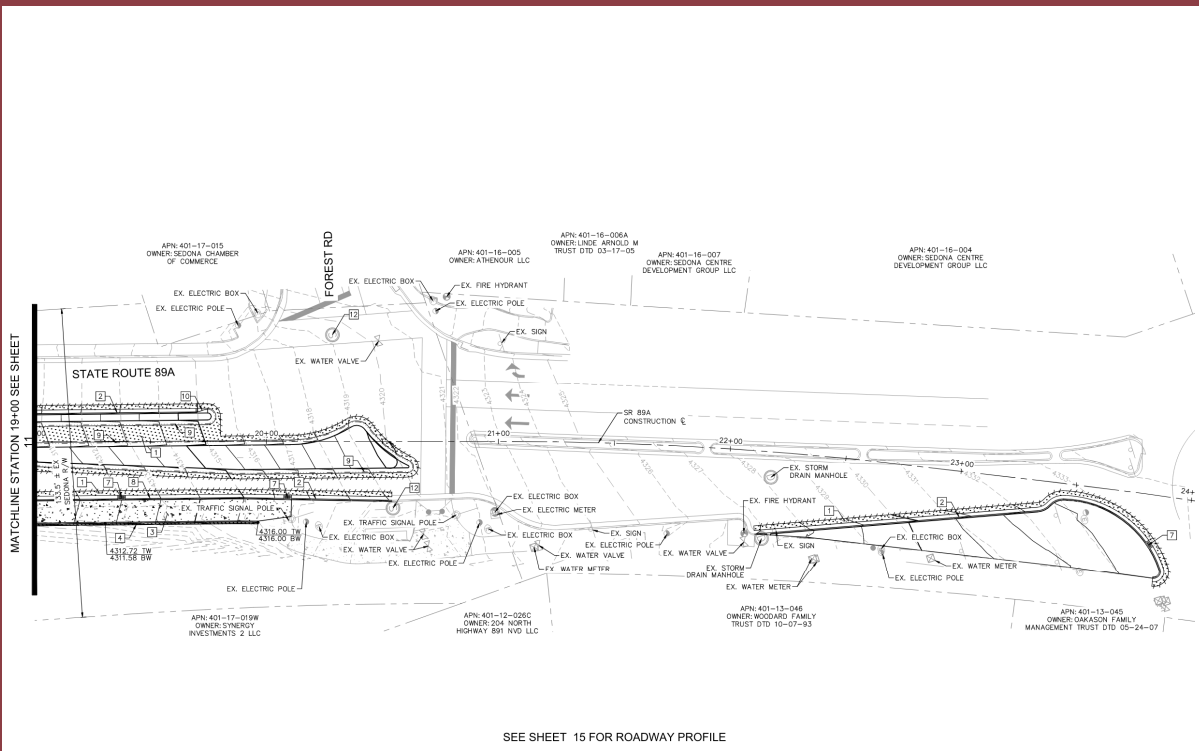
Forest / Ranger / 89A Study



SIM-1B Uptown NB Improvements



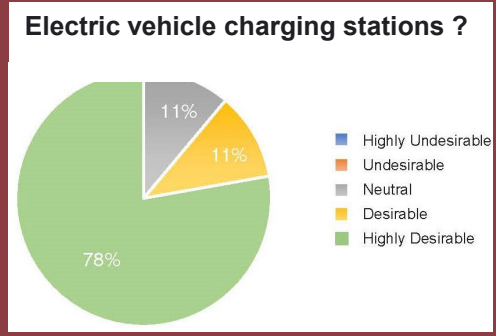
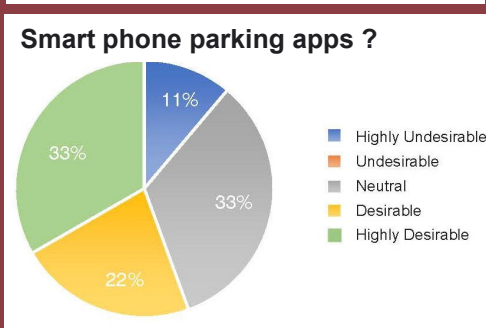
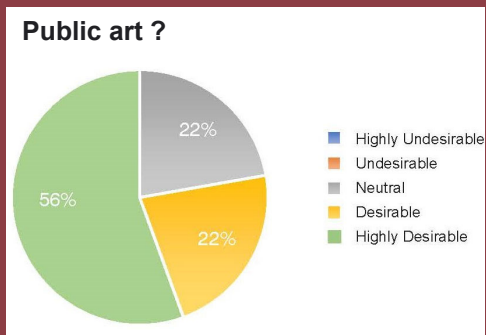
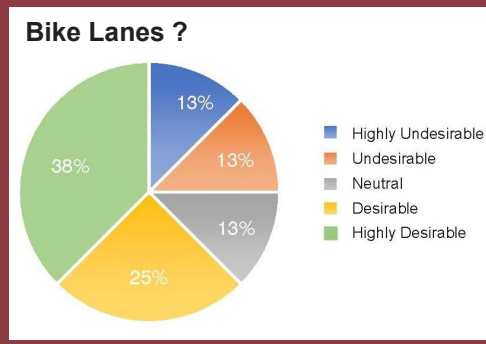
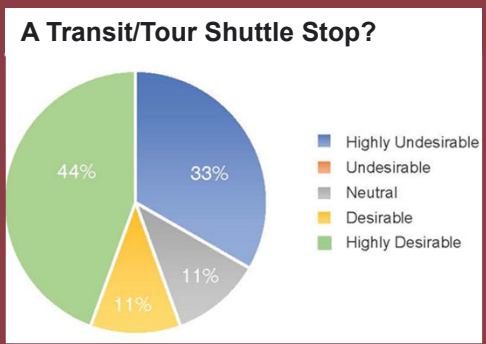
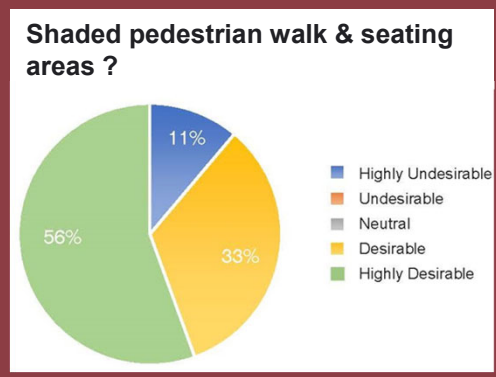
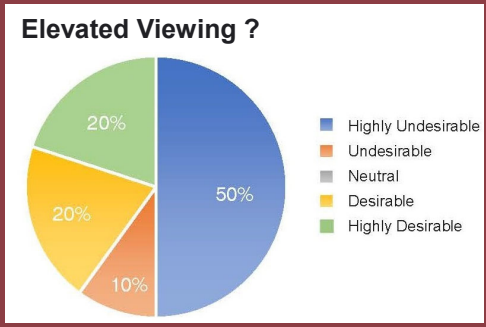
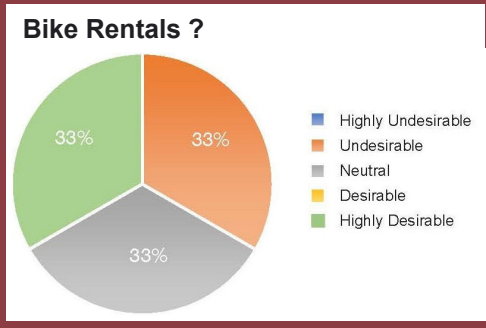
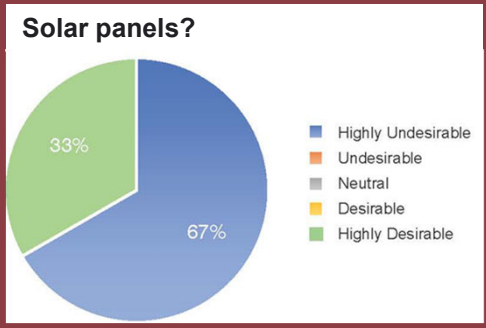
- PROJECT STATUS:
- Design in process
 - Amara PPP/DA
 - Public Outreach Fall 2022





SIM-3 Uptown Garage

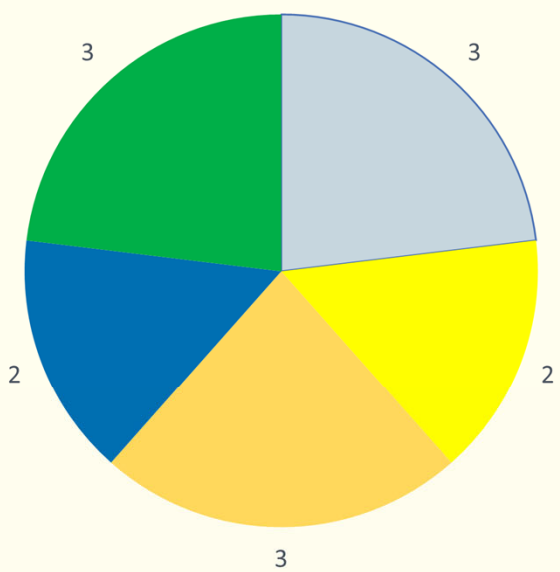
April 14, 2021, Public Information Meeting:
SURVEY





SIM-3 Uptown Garage

March 17, 2022,
Public Information Meeting:
**Concerns, Issues, and
Problems**



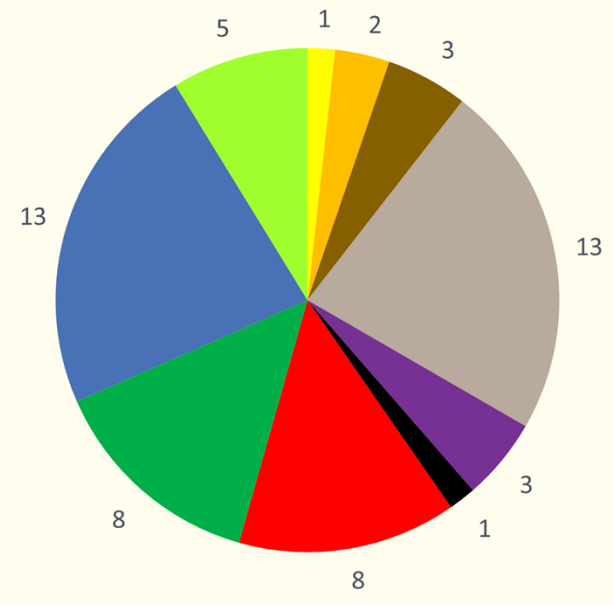
- Air Quality
- Noise
- Operation of the Facility
- Miscellaneous Questions/Concerns
- Supports the Garage





SIM-3 Uptown Garage

September 8, 2022,
Public Information Meeting:
Concerns, Issues, and Problems



- Lack of Resident Input
- Surface Lot Instead
- Locate Parking Elsewhere
- General Comment, Question, or Request
- Unsure Parking Garage Needed
- Current Parking Is Sufficient
- Opposed to Parking Structure
- Supports Parking Structure
- Design Comment or Question
- Opposed to Blasting

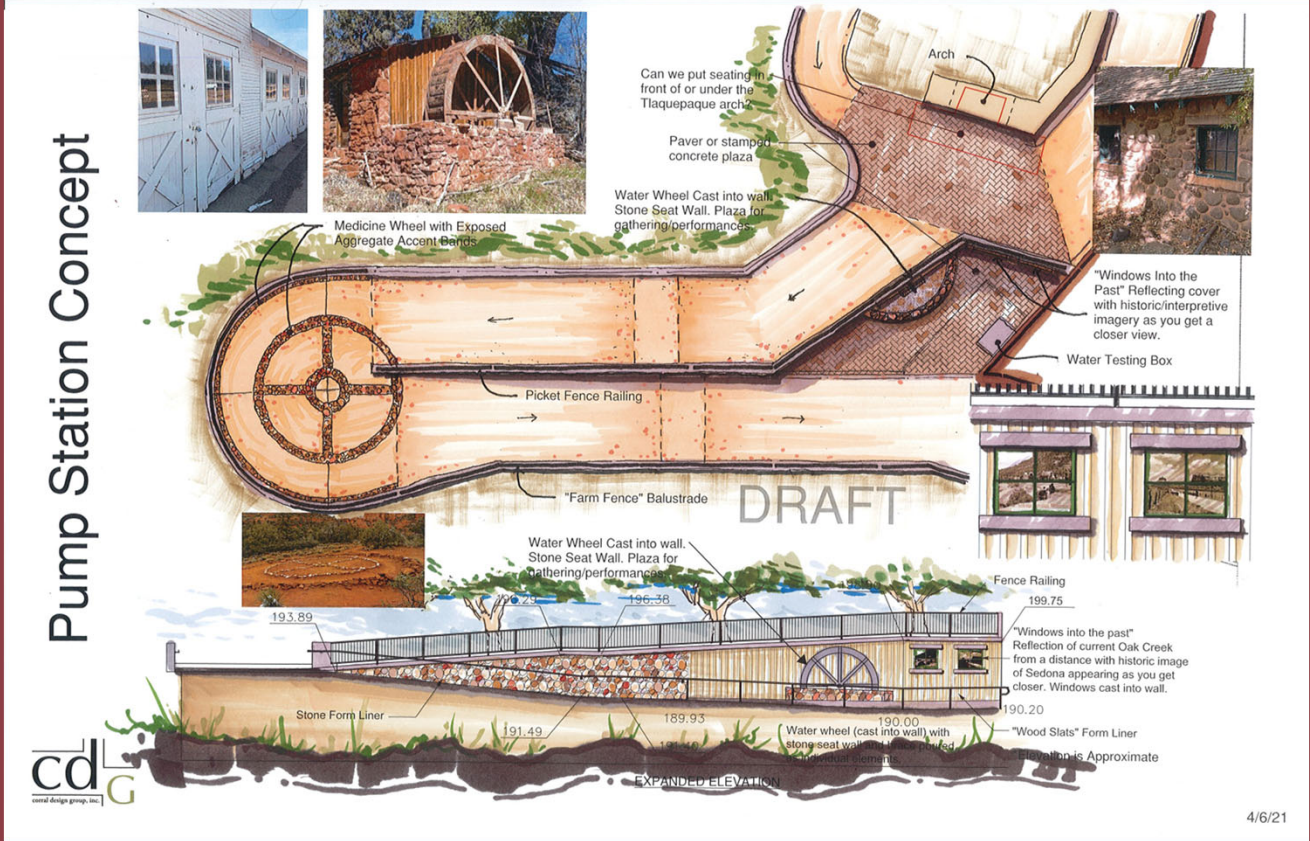




SIM-4C Pedestrian Crossing at Oak Creek

Pump Station Concept

- PROJECT STATUS:**
- Design is completed
 - A Construction Bid Solicitation for the project was advertised beginning 9/30/22 bid opening is November 2022
 - Construction is anticipated to begin around January 2022 and be completed in a period of 9 months (September/October, 2023).





SIM-5A Portal/Brewer Connection



- Parking design is complete
- Implementation on hold pending design of connection over Soldier Wash with Brewer-Ranger intersection design



WWW.SEDONAAZ.GOV/SIM



SIM-5B Forest Road Connection



PROJECT STATUS

- Construction in process
- Utility relocations are in process
- Major earthwork to begin within a few weeks
- Anticipated completion: November 2023



SIM-5C Los Abrigados/Brewer Connection



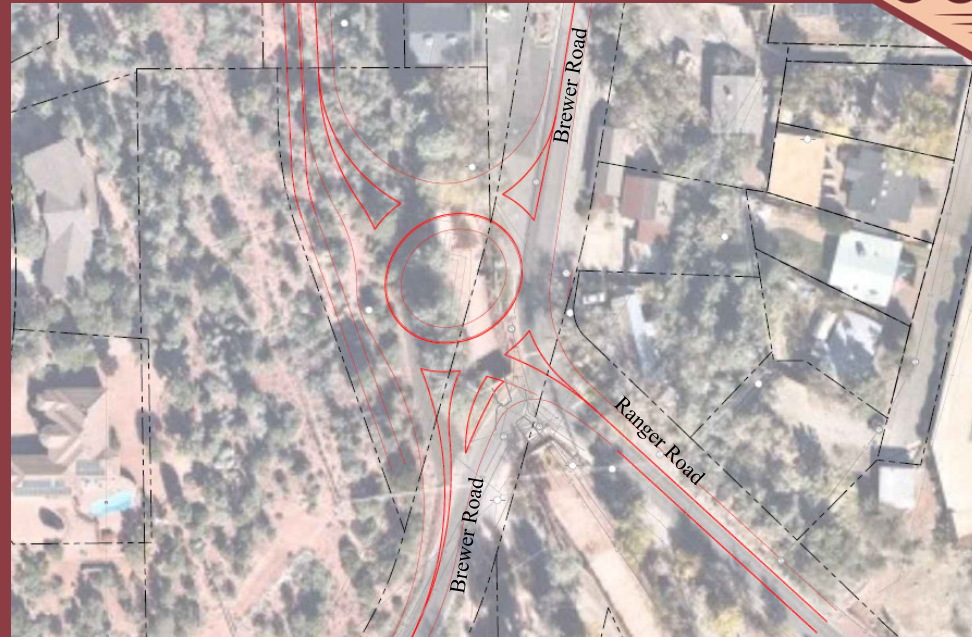
Project Complete August 2022



WWW.SEDONAAZ.GOV/SIM



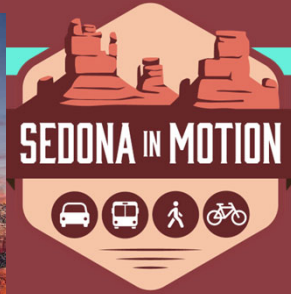
SIM-5D Brewer/Ranger Intersection



- Design concept finalized
- Design contract to council Fall 2022



WWW.SEDONAAZ.GOV/SIM



SIM-11 Bicycle & Pedestrian

Projects Complete: 4 miles



Bicycle Green Lanes



Dry Creek Road SUP



Chapel Road SUP



Hillside Vista SUP



Posse Ground/Soldiers Pass SUP



Sunset Drive SUP



Shelby Drive SUP



Thunder Mountain /Sanborn Dr SUP

- **Under Construction:** Forest Road, Navoti to Dry Creek SUP, Pinon Drive
- **Projects Under Design:** Dry Creek Road (Two Fences to SR 89A), Pedestrian Crossing on Oak Creek, SR 179 Signing and Striping



WWW.SEDONAAZ.GOV/SIM

SIM-12 Traveler Information



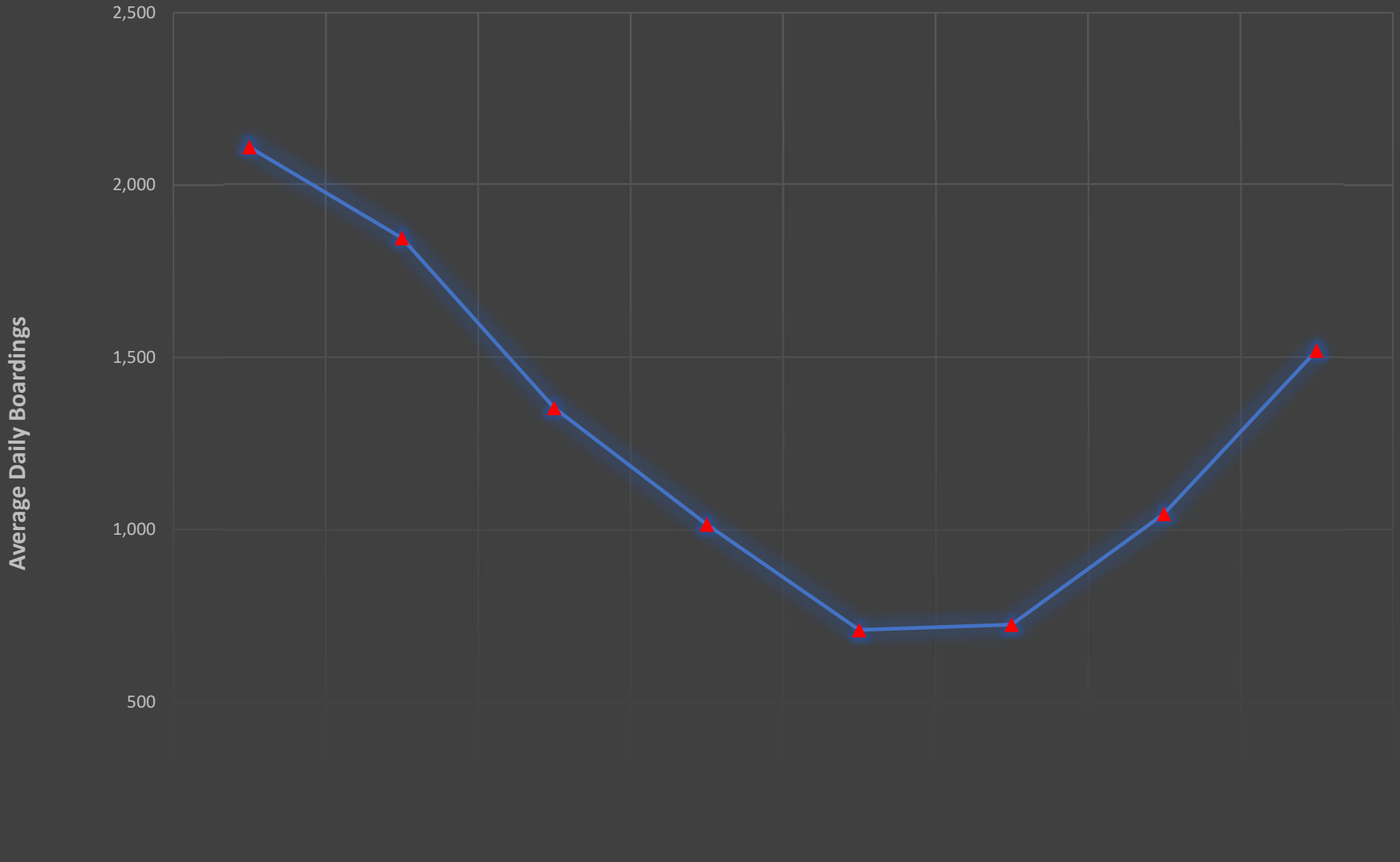
WWW.SEDONAAZ.GOV/SIM



SEDONAAZ.GOV/SIMNEWS

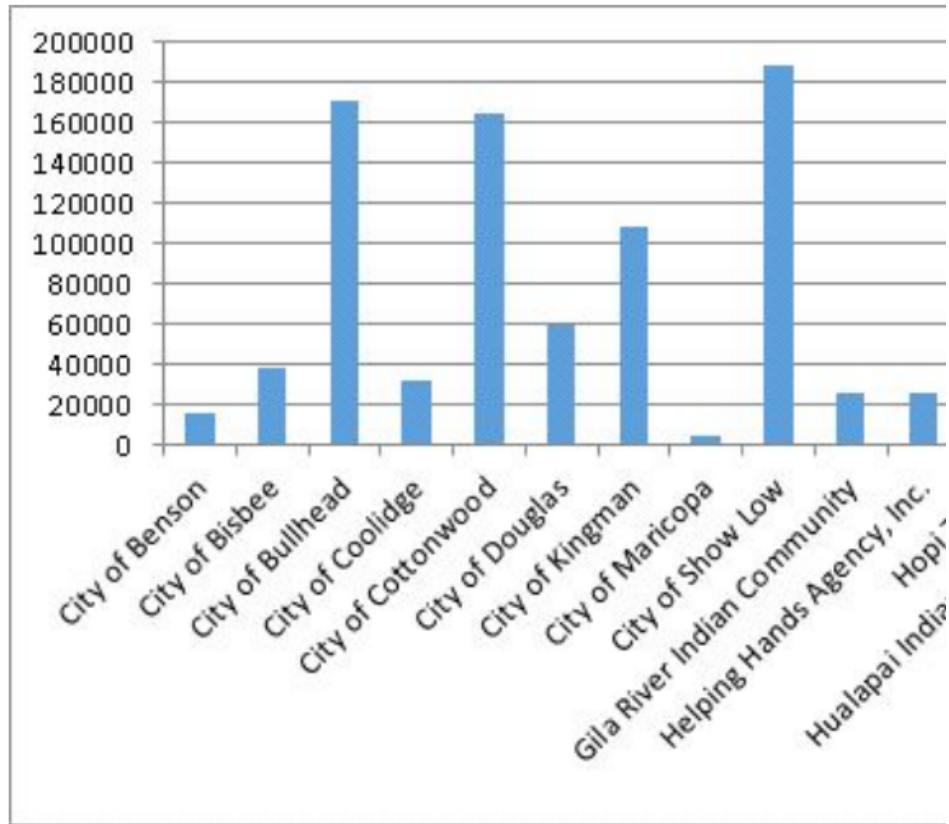


Shuttle Average Daily Boardings



	March	April	May	June	July	Aug	Sept	Oct
Daily Average	2,110	1,846	1,353	1,015	709	724	1,046	1,520

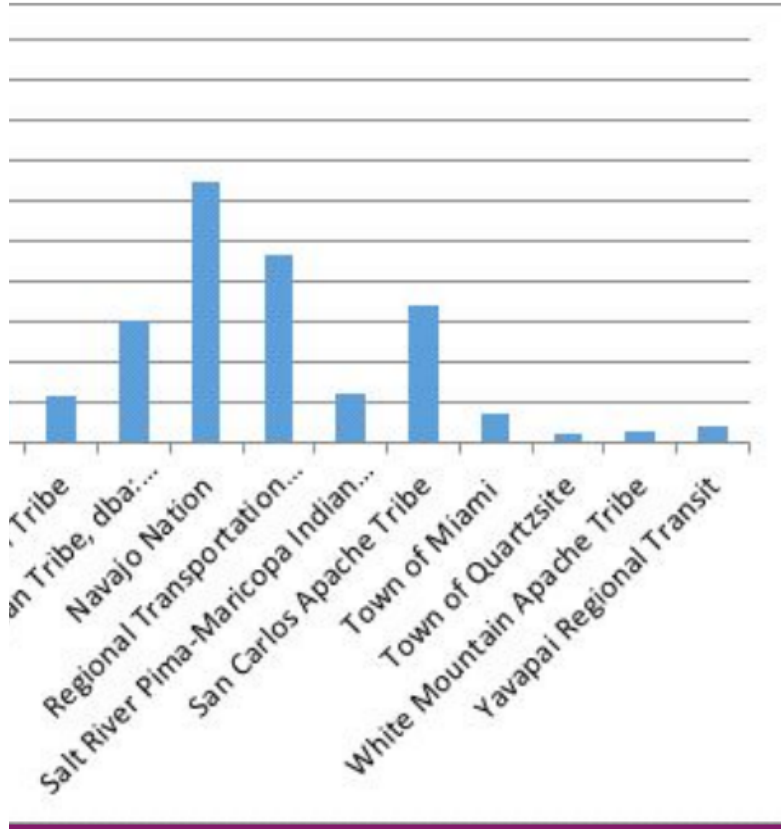
NTD 2018 – Published Total Passenger Trips



Metrics

Assumpt

Sedona S
FY23 sch
FY 23 Proc



ions:

shuttle daily average boardings = 1,221.26

edule service days = 220

ojected boardings = **268,646**

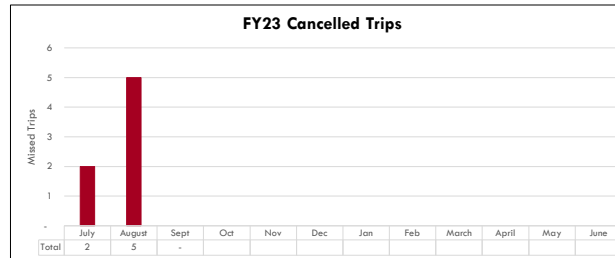
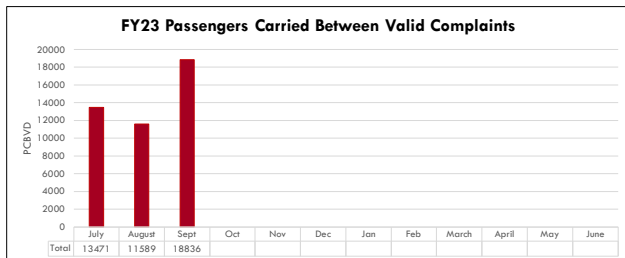
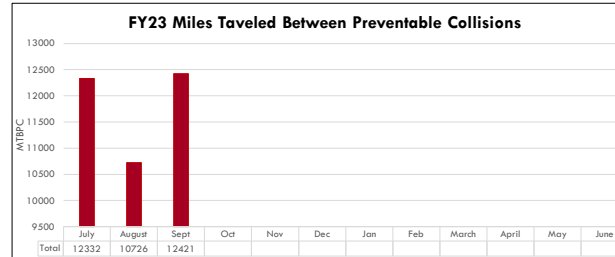
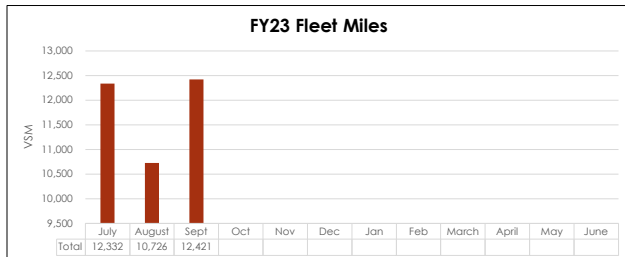
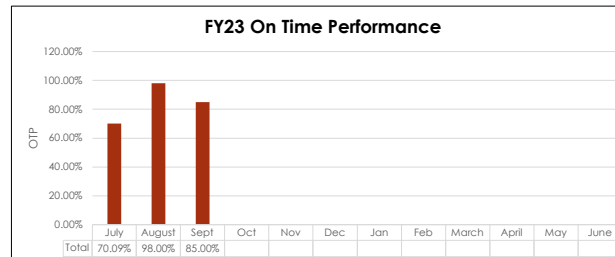
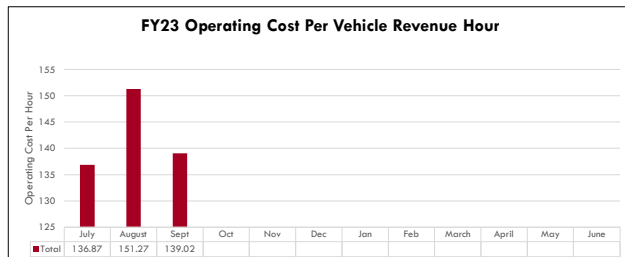
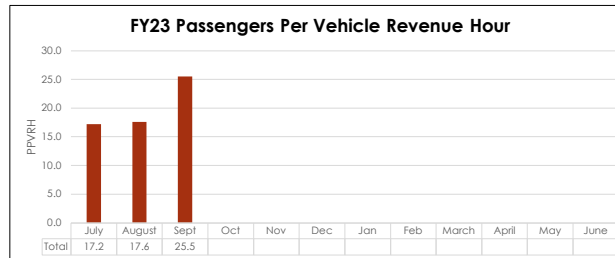
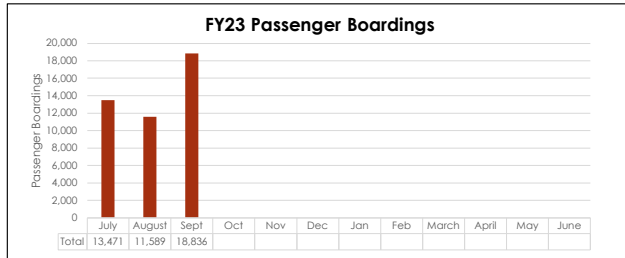


Key Performance Indicators

[Service Calendar](#)

System Data

- August
- July
- Sept
- April



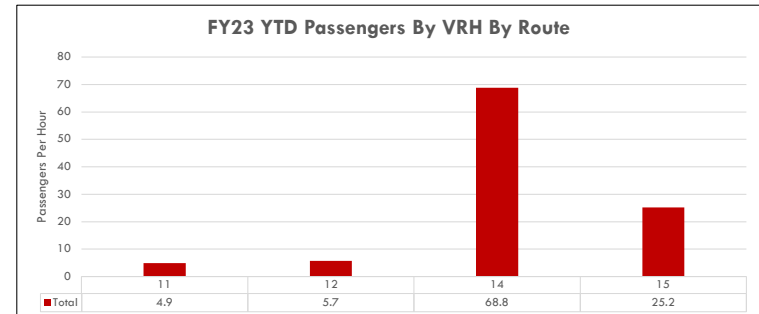
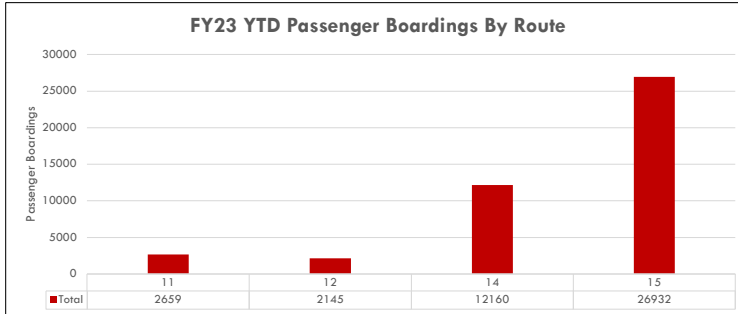


SEDONA SHUTTLE

Key Performance Indicators

Route Data

11
12
14
15



Daily Quota Data

Aug
July
Sept
March

