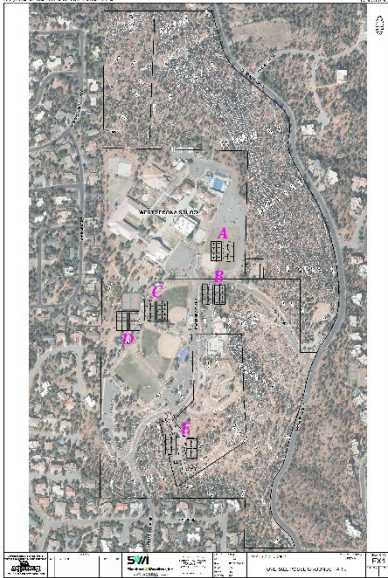




City of Sedona
Public Works Department
 102 Roadrunner Drive Sedona, AZ 86336
 (928) 204-7111 • Fax: (928) 282-5348

PR-09 - Posse Grounds Park Pickleball Courts

FY23 CIP Update



KEY FEATURES:

Consultant: Shephard-Wesnitzer, Inc.

Contractor: TBD

Timing: FY

Construction Challenges:

Orient courts north-south

Flat location

Provide sufficient parking

Project Manager:

Larry Farhat

(928) 203-5120

lfarhat@SedonaAZ.gov

City Engineer:

J. Andy Dickey, PE

(928) 203-5039

ADickey@SedonaAZ.gov

\$ FY23 Project Budget \$140,000

Total Project Budget: \$1,540,000

The sport of pickleball is growing continuously, and there are no signs of the trend changing direction. This project is identified in the City Council approved budget for FY 23 and FY24. The shared use tennis/pickleball courts (4 courts) at Posse Grounds Park are used daily, sometimes offering two sessions, by local players who have over 300 members in their group. The daily scheduled play is well attended during spring/summer/fall seasons, averaging 30 players each session, if not more. On days where both a morning and afternoon/evening session are offered, there can be over 60 players on a single day. Dedicated courts with lights are needed; the current shared use causes conflict due to pickleball being a fast-paced sport. In addition, due to the limited number of courts, it discourages use due to the wait time.

This project will be constructed on a site location that does not impact the Posse Grounds Park Evaluation. Completion of this project will result in up to eight (8) pickleball courts with lighting. It will include installation of benches, drinking/refilling water station, chain-link fencing and gates, sport court lighting system with timer, waste receptacles, and parking.

The above conceptual sketch identifies potential locations being considered at this time and has not been thoroughly vetted.

Project Status

February 2023

Project Phase	% Completion	Completion Date
Design	0%	FY24
Construction	0%	FY25