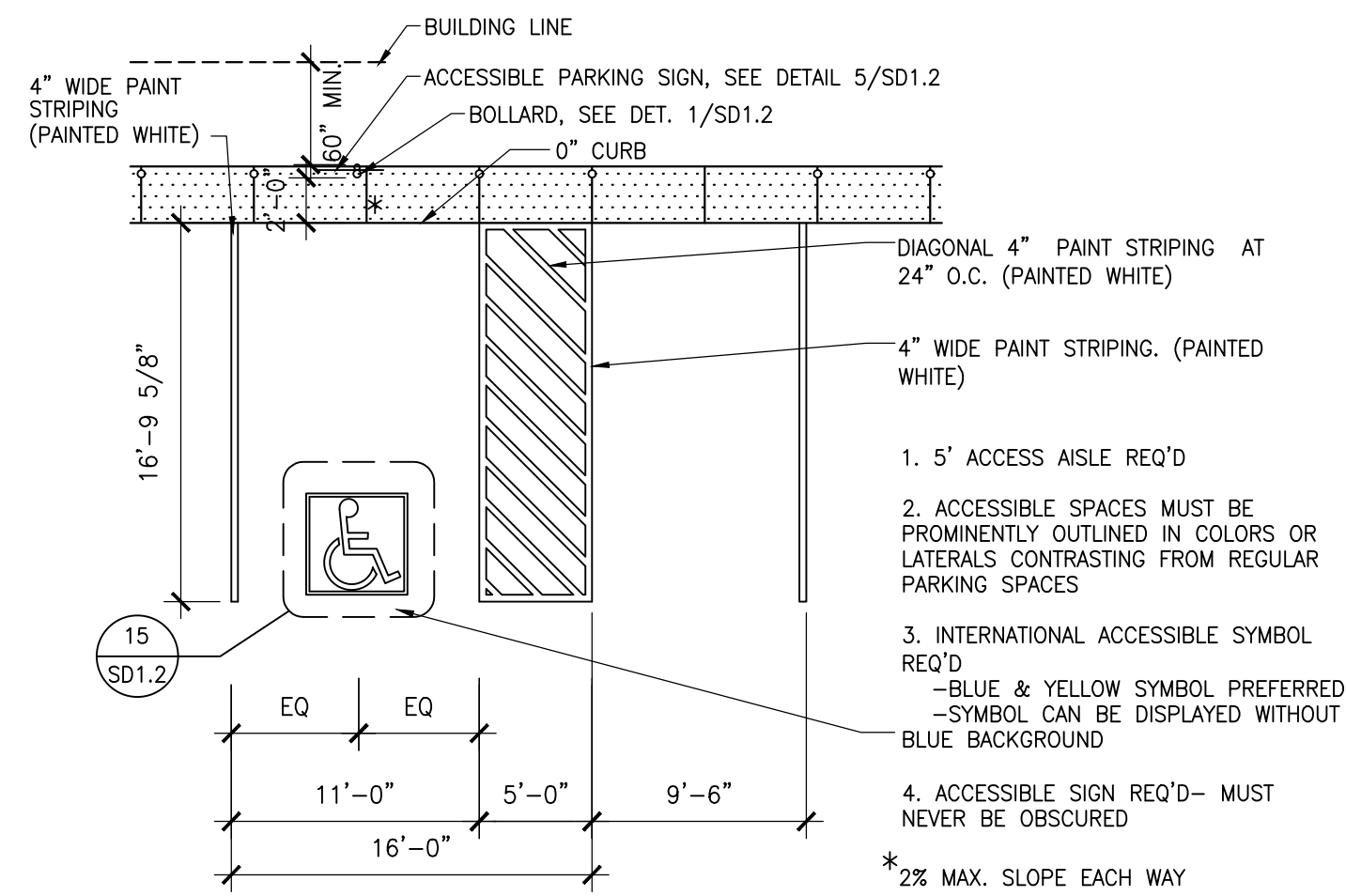
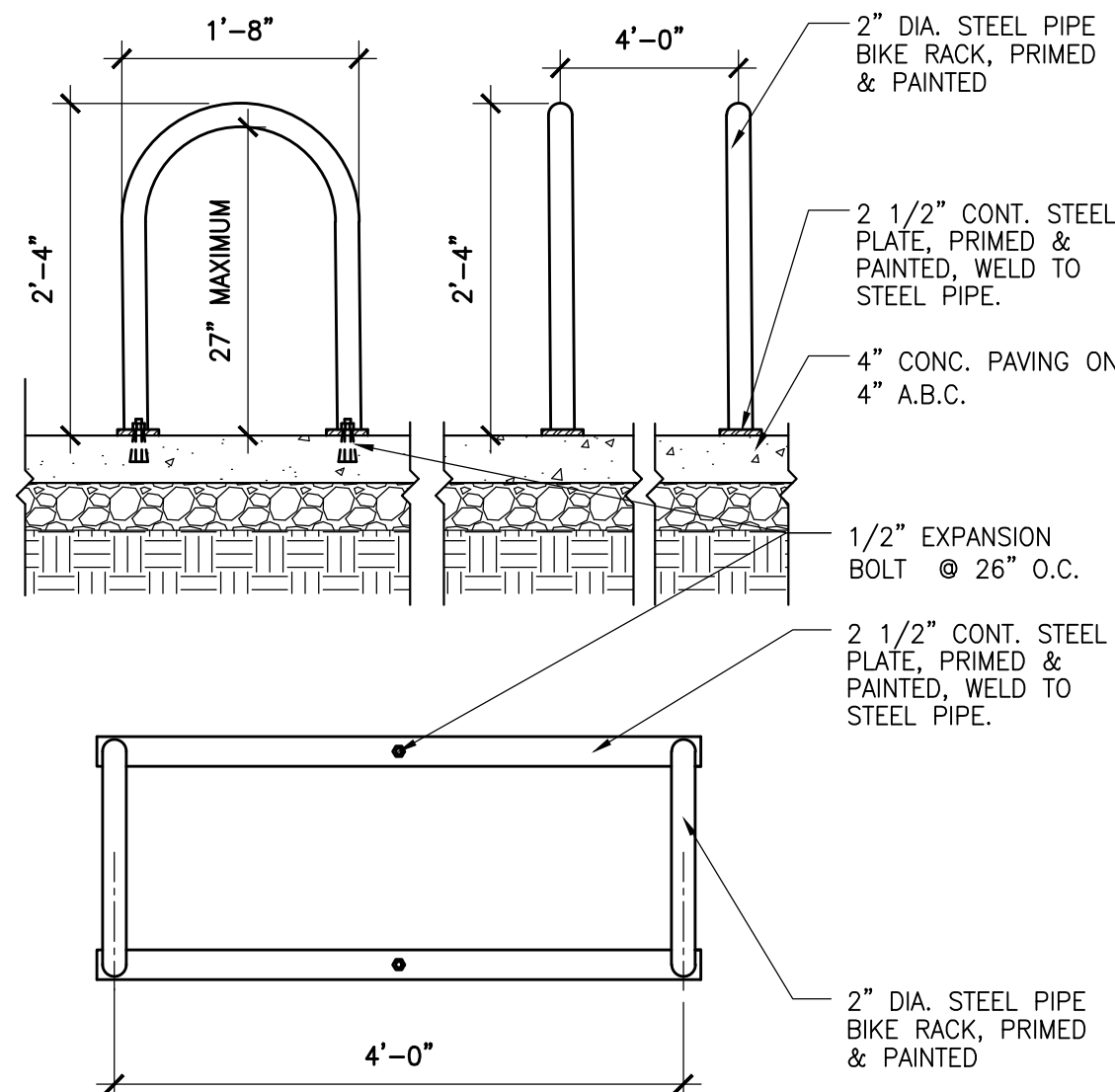


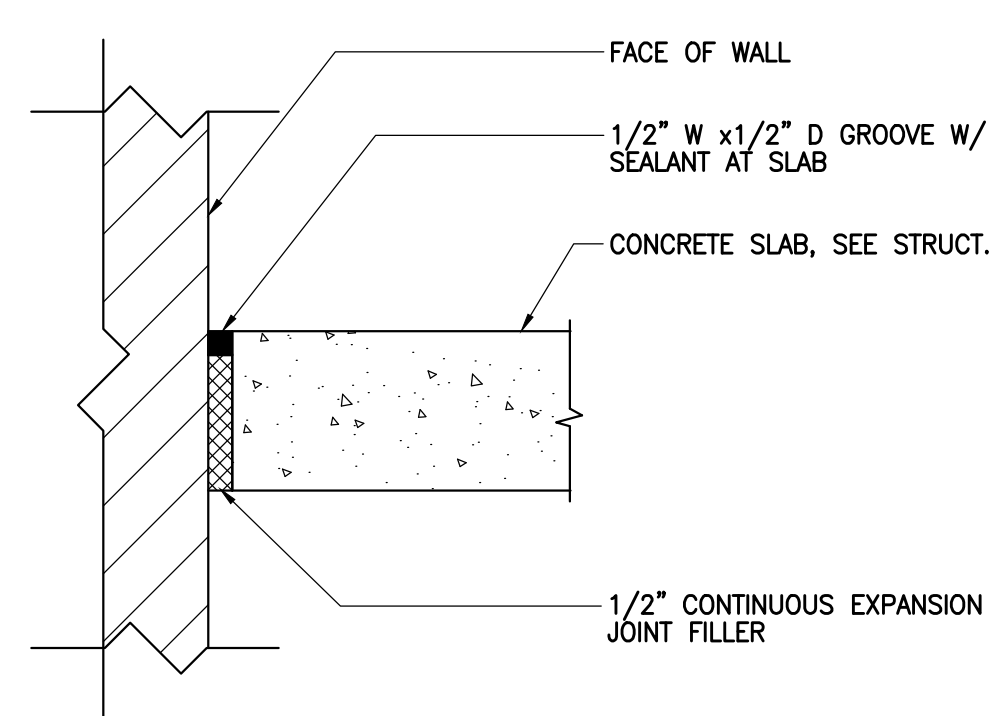
**15 ACCESSIBLE PARKING SYMBOL**  
1/2"=1'-0"



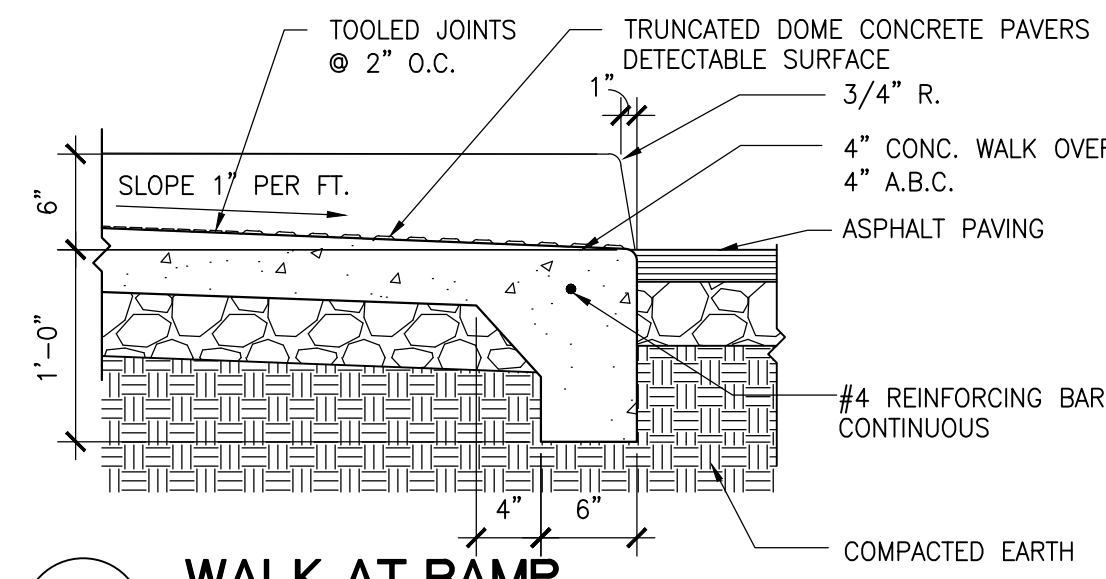
**12 ACCESSIBLE PARKING STALL**  
1/8"=1'-0"



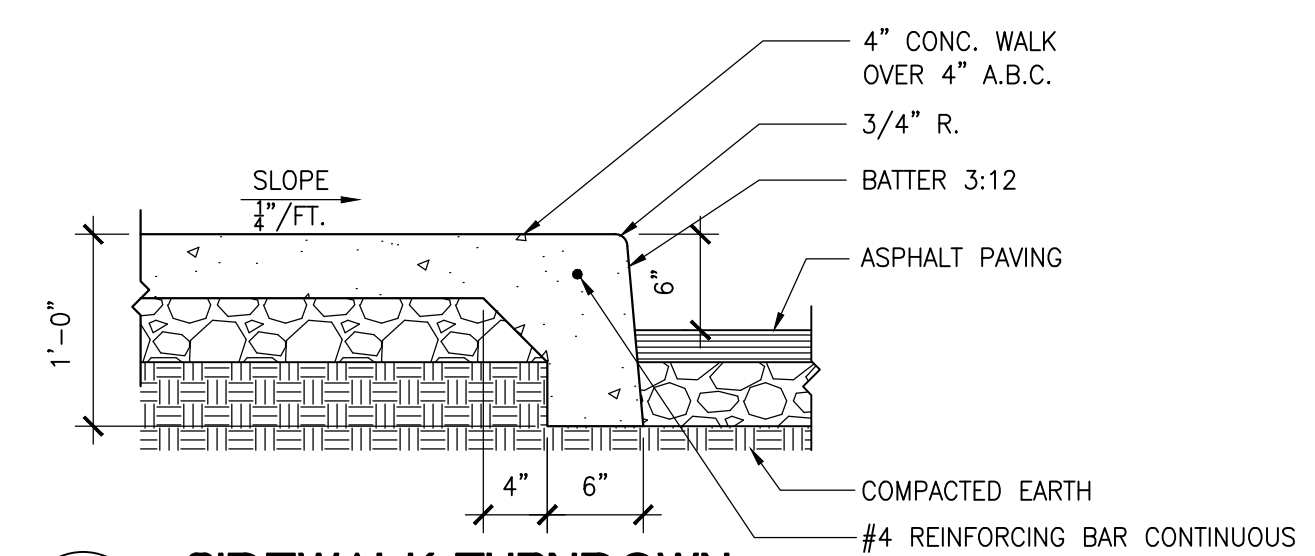
**14 BIKE RACK DETAIL (TYPICAL OF 2)**  
3/4"=1'-0"



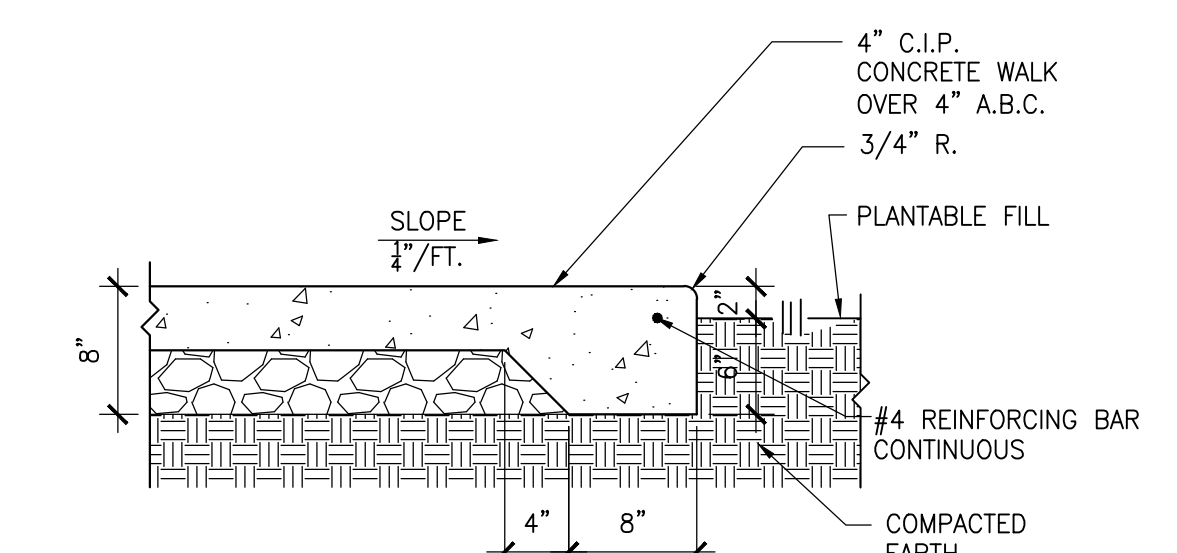
**13 TYPICAL SLAB AT GRADE**  
3"=1'-0"



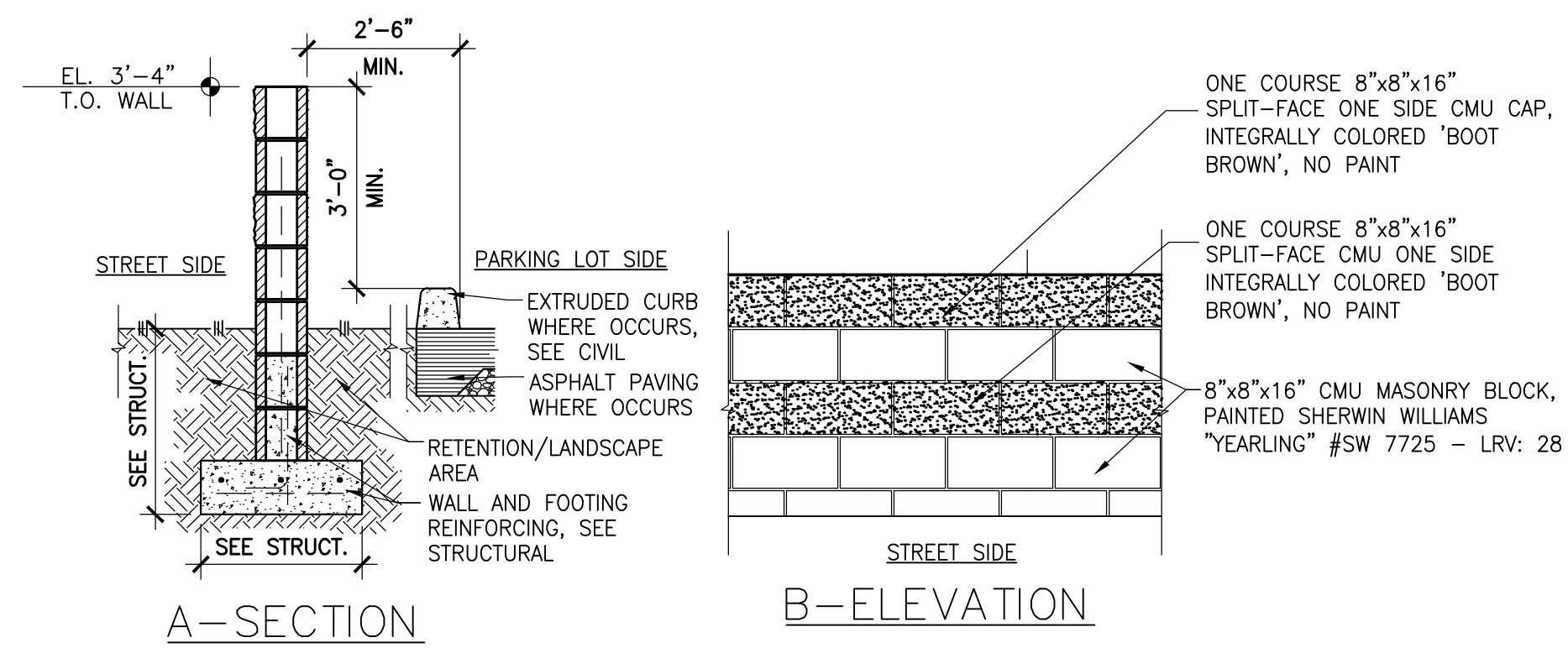
**10 WALK AT RAMP**  
1"=1'-0"



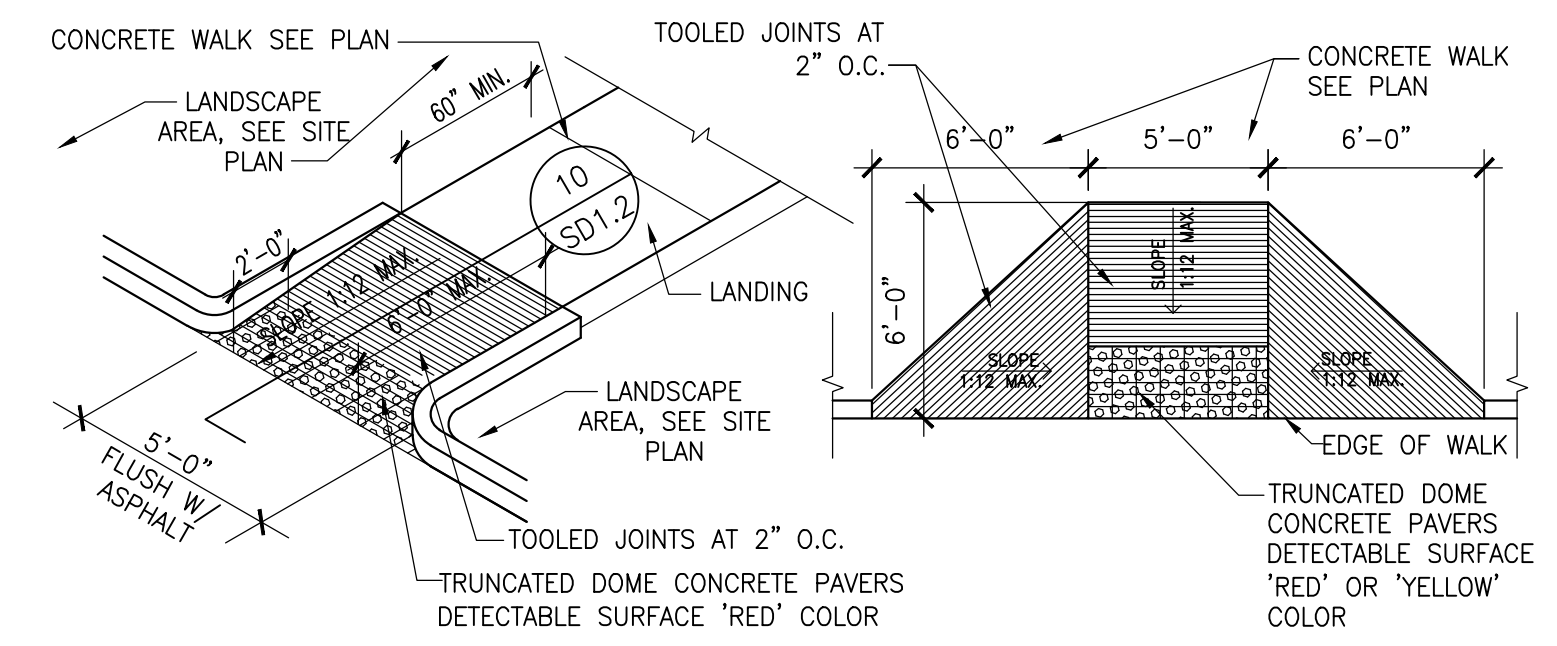
**9 SIDEWALK TURNDOWN**  
1"=1'-0"



**8 EDGE OF WALK AT PLANTER**  
1"=1'-0"

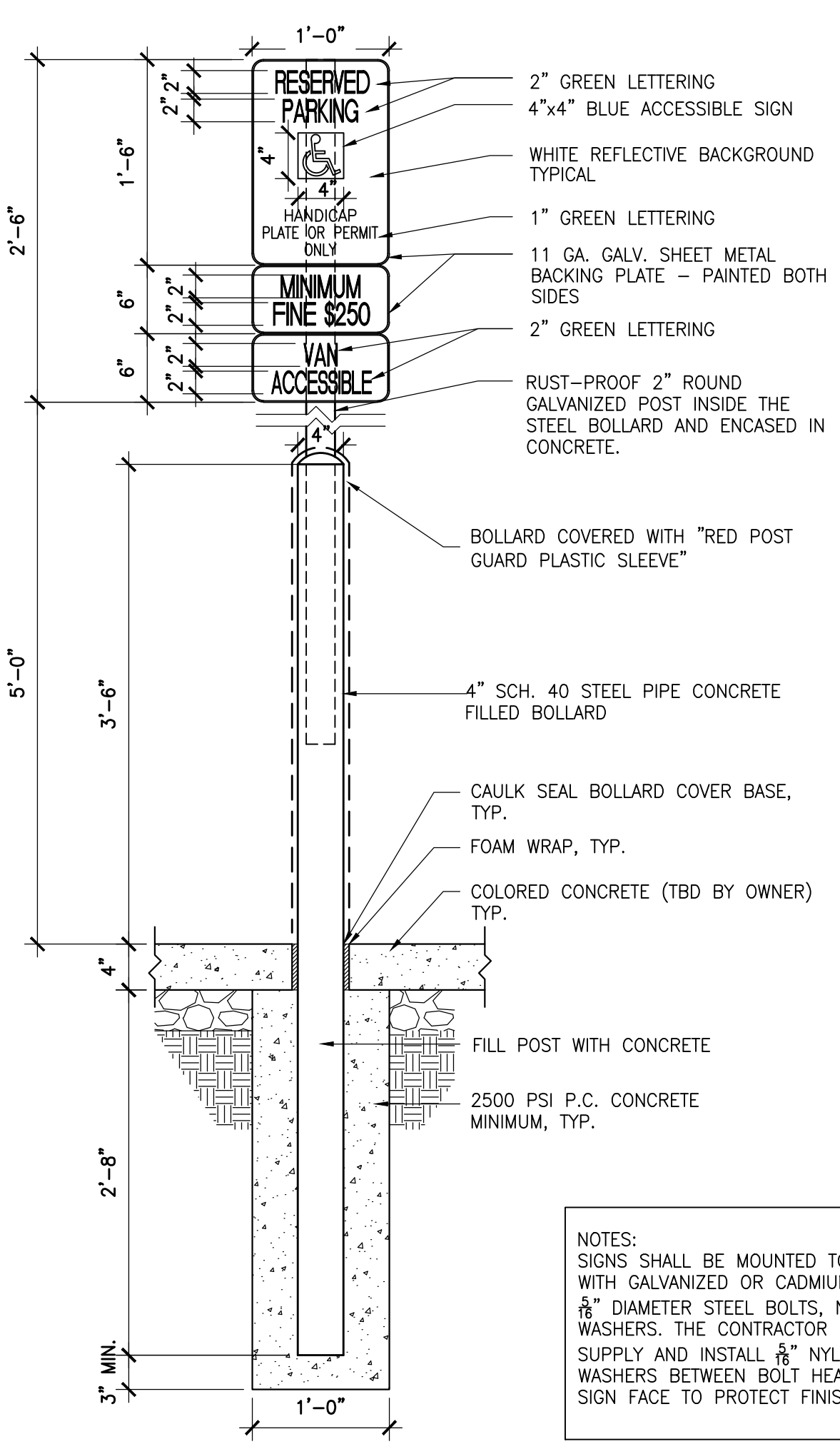


**7 SCREEN WALL**  
1/2"=1'-0"



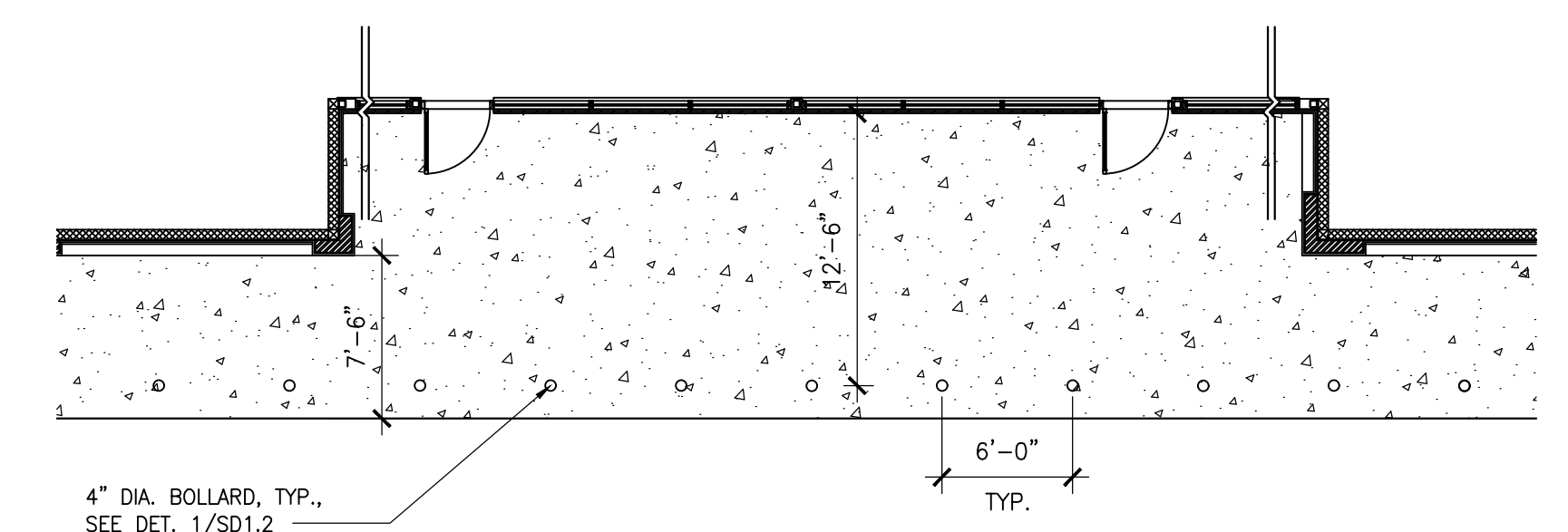
**6 ACCESSIBLE RAMPS**  
3/16"=1'-0"

NOTE: ALL A.D.A. REQUIREMENTS TO BE INSTALLED PER APPROVED ARCHITECT'S PLANS



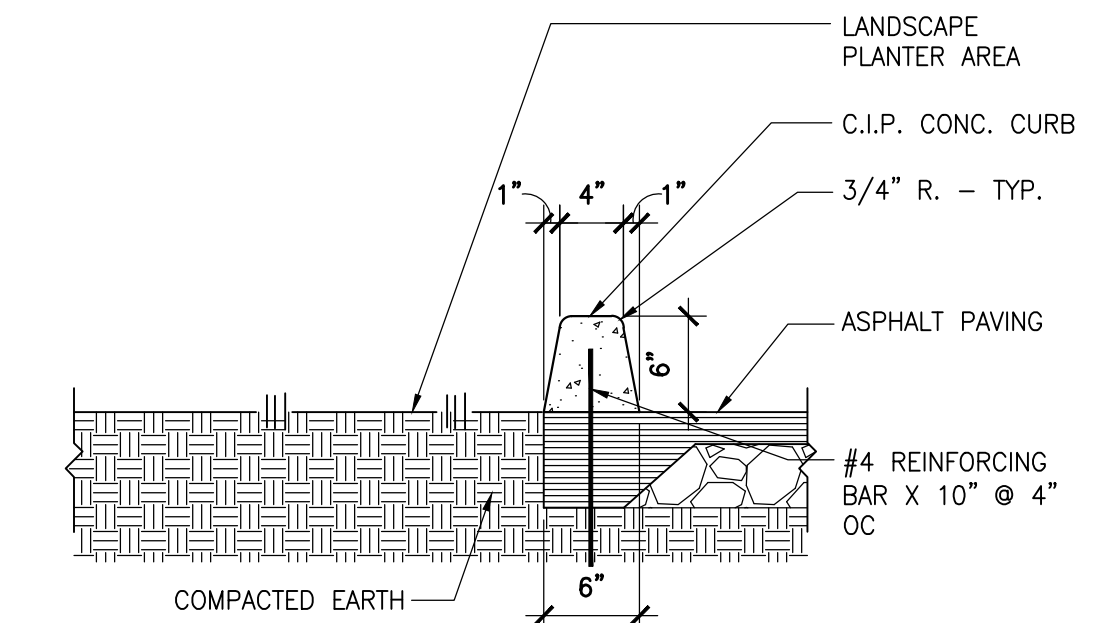
**5 HANDICAP ACCESSIBLE SIGN**  
1"=1'-0"

NOTES: SIGNS SHALL BE MOUNTED TO POST WITH GALVANIZED OR CADMIUM PLATE 1/8" DIAMETER STEEL BOLTS, NUTS AND WASHERS. THE CONTRACTOR SHALL SUPPLY AND INSTALL 1/2" NYLON WASHERS BETWEEN BOLT HEADS AND SIGN FACE TO PROTECT FINISH.



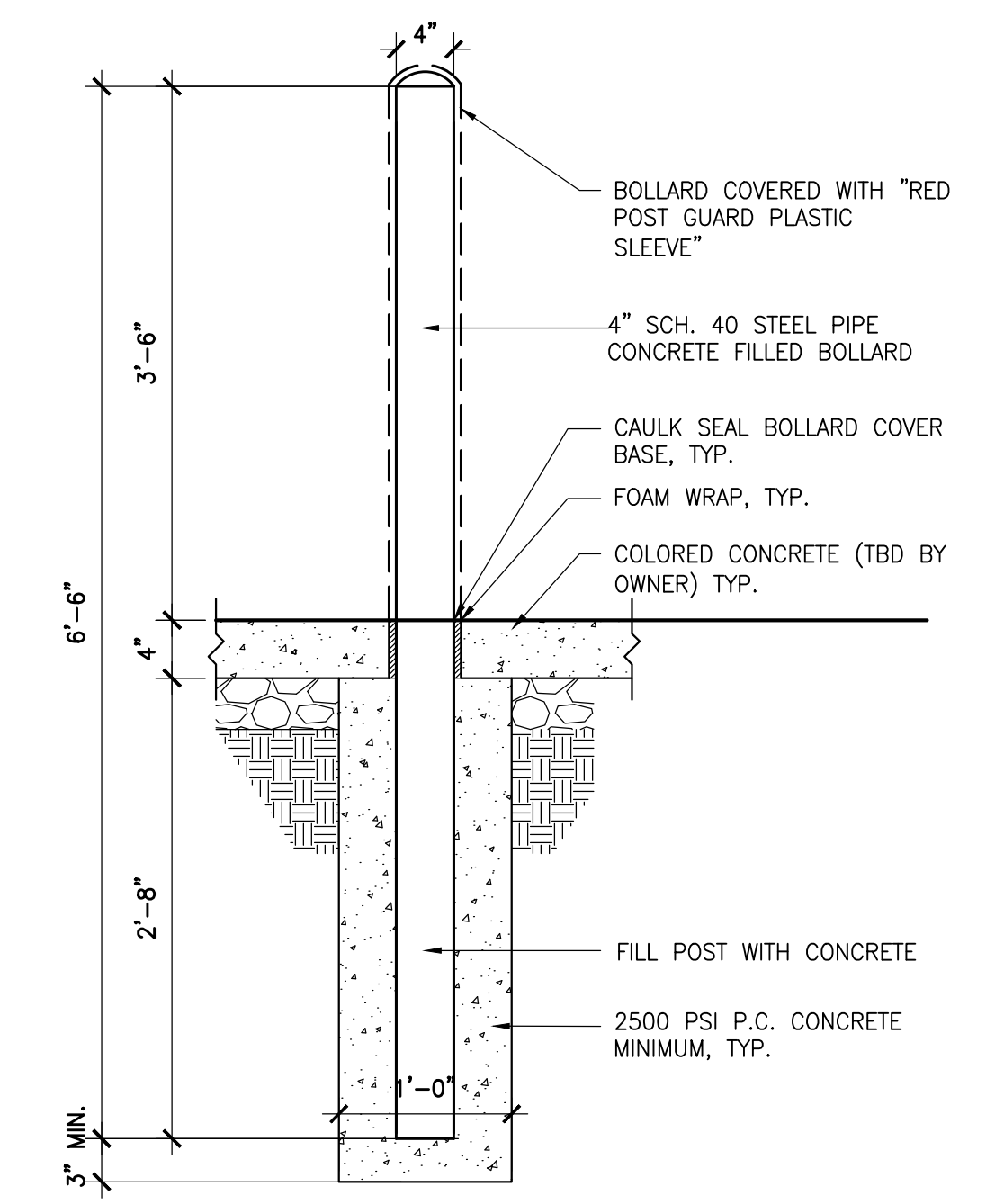
**4 TYP. FRONT COLORED CONCRETE + BOLLARD**  
1/8"=1'-0"

NOTE: EXPANSION JOINTS PER INDUSTRY STANDARD.



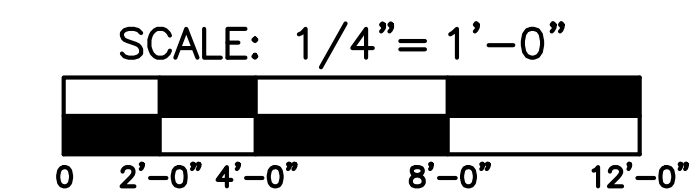
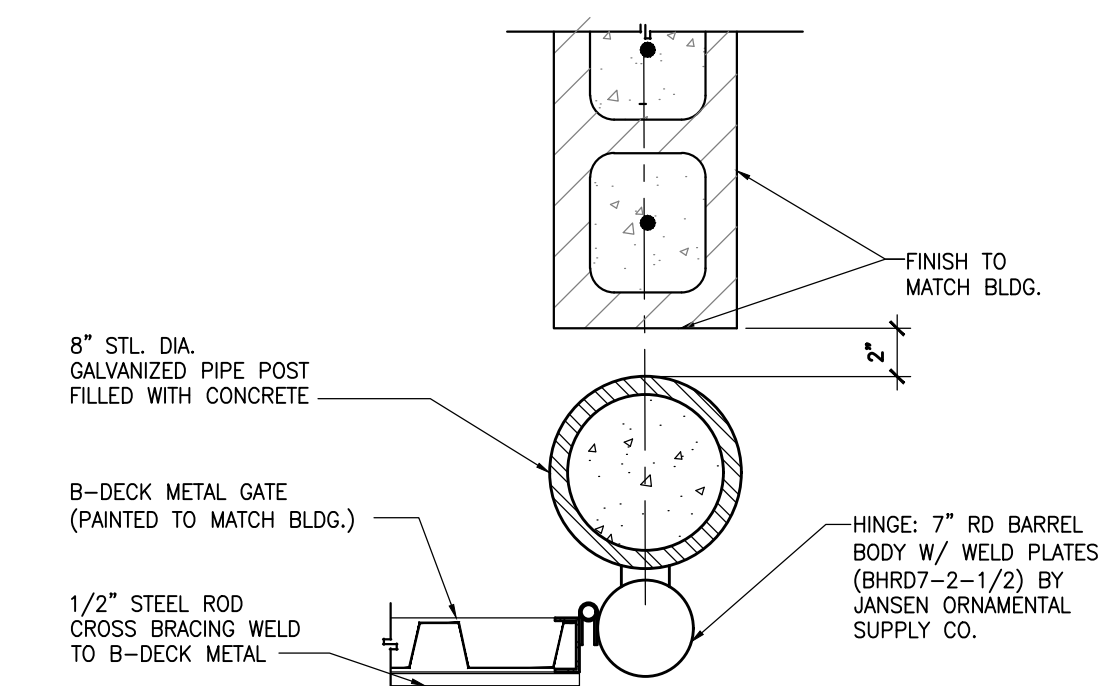
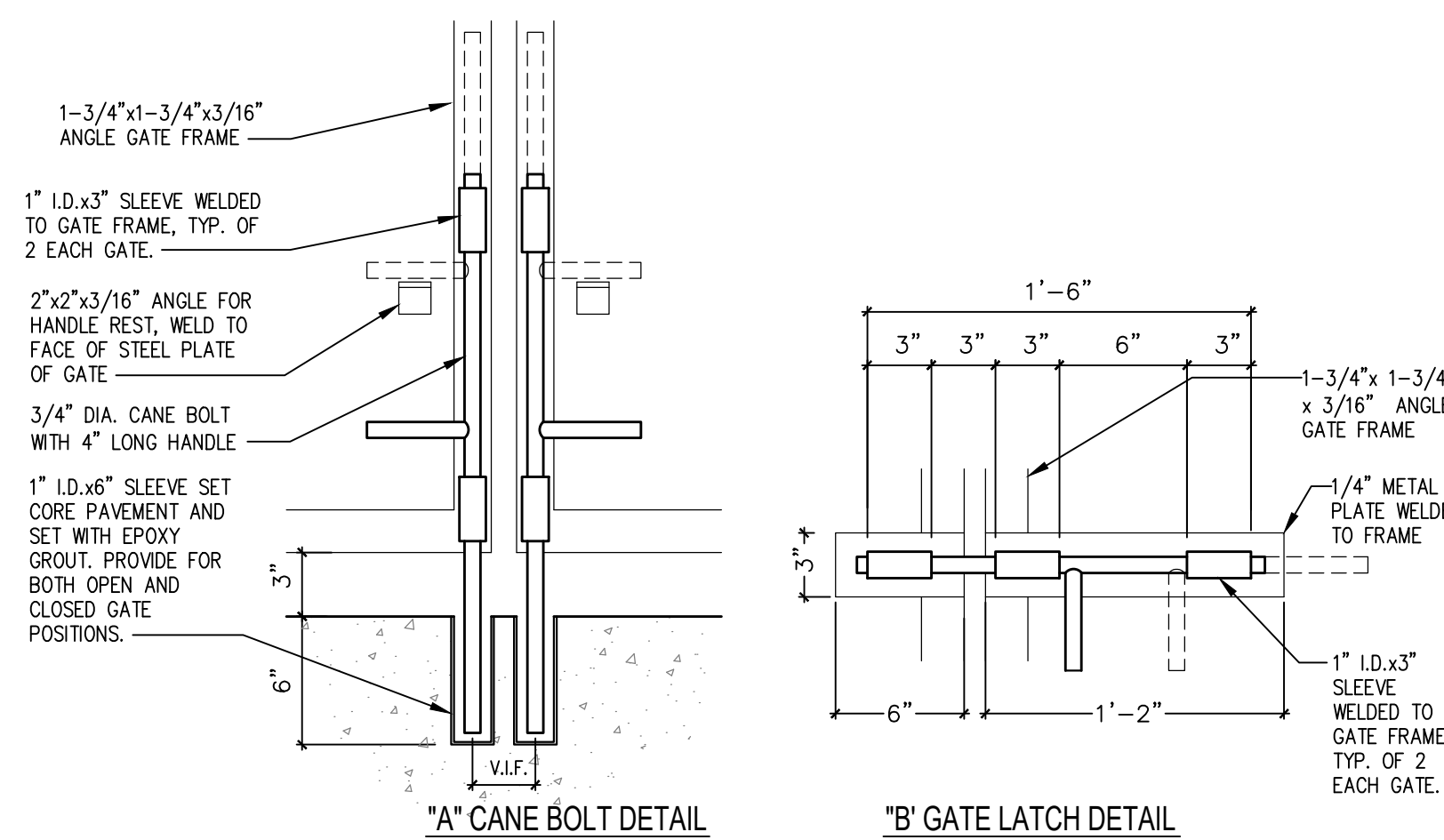
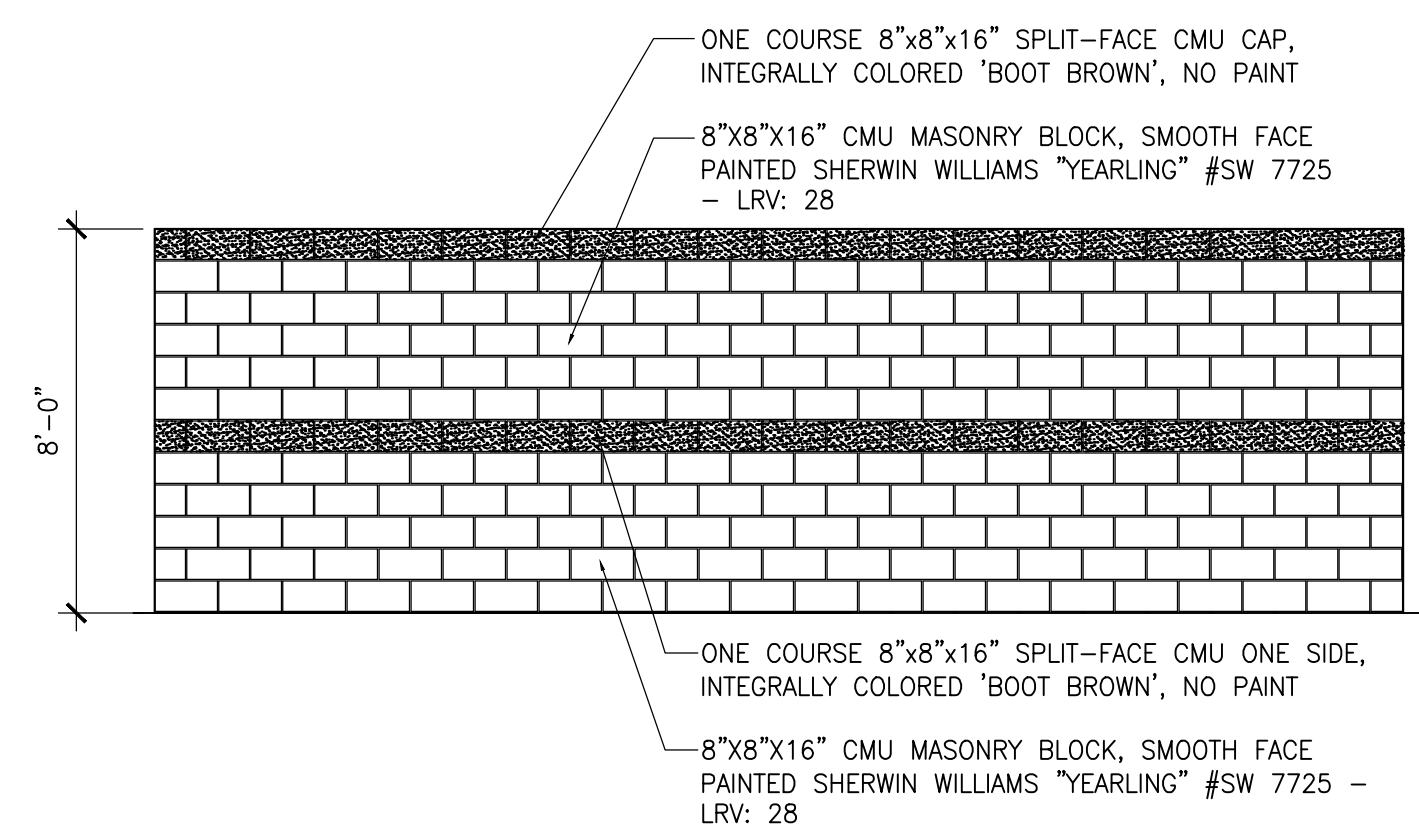
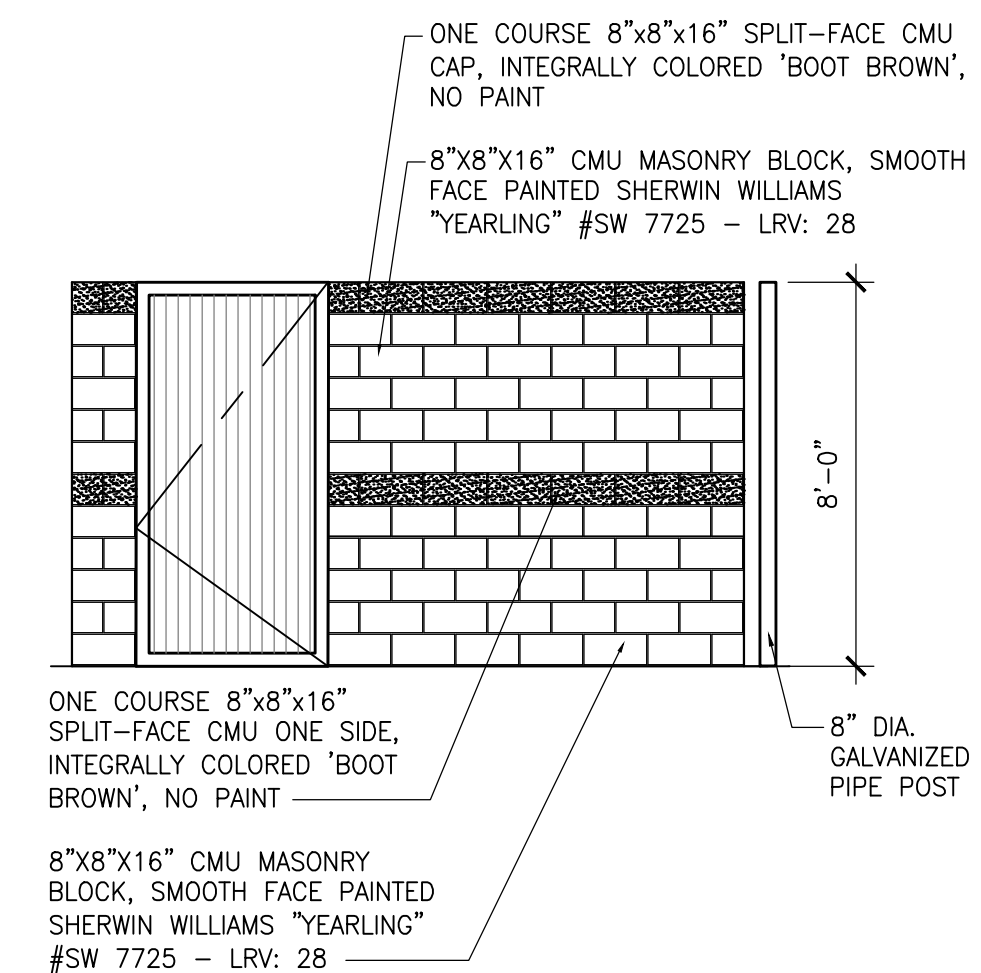
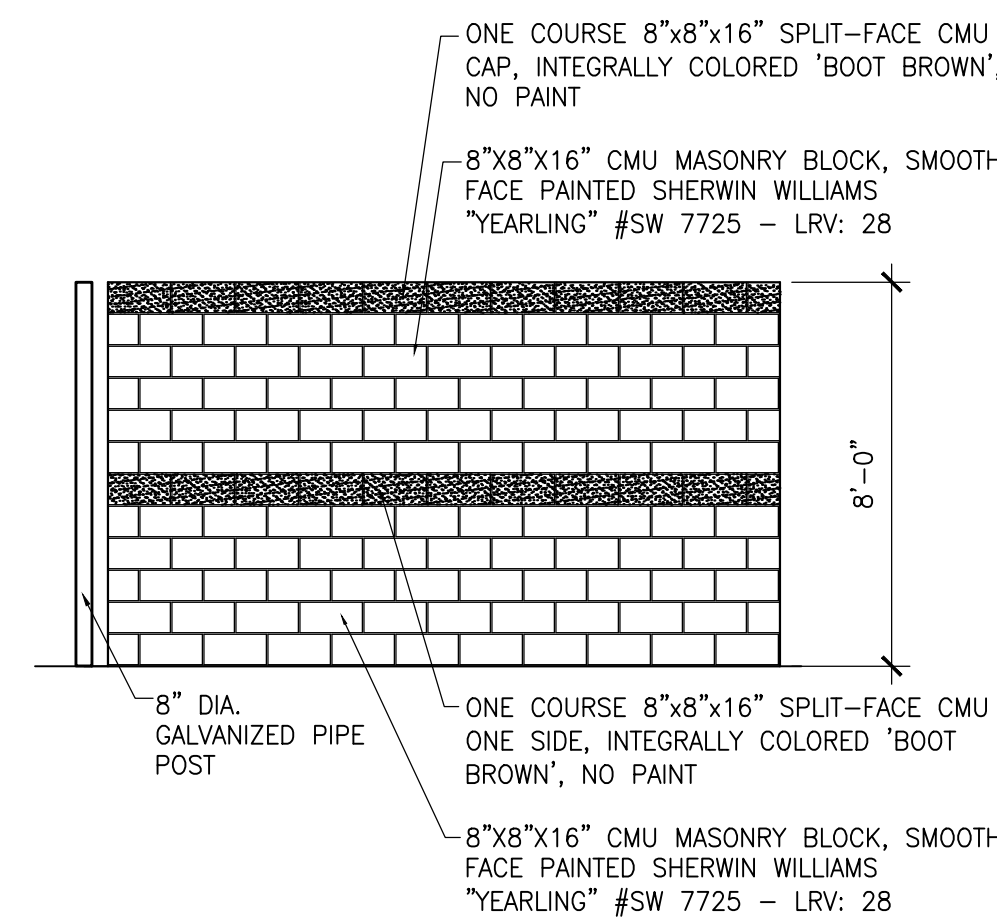
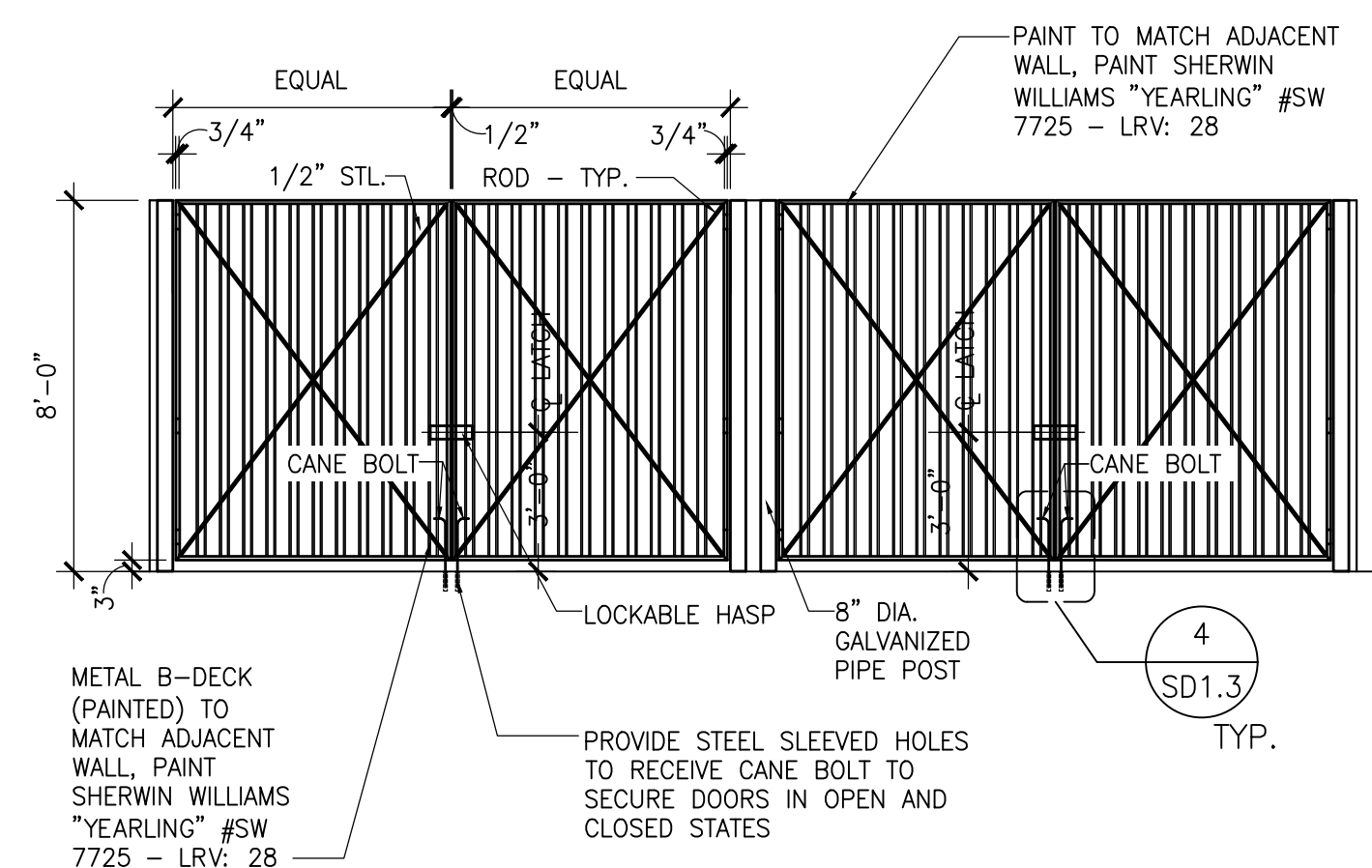
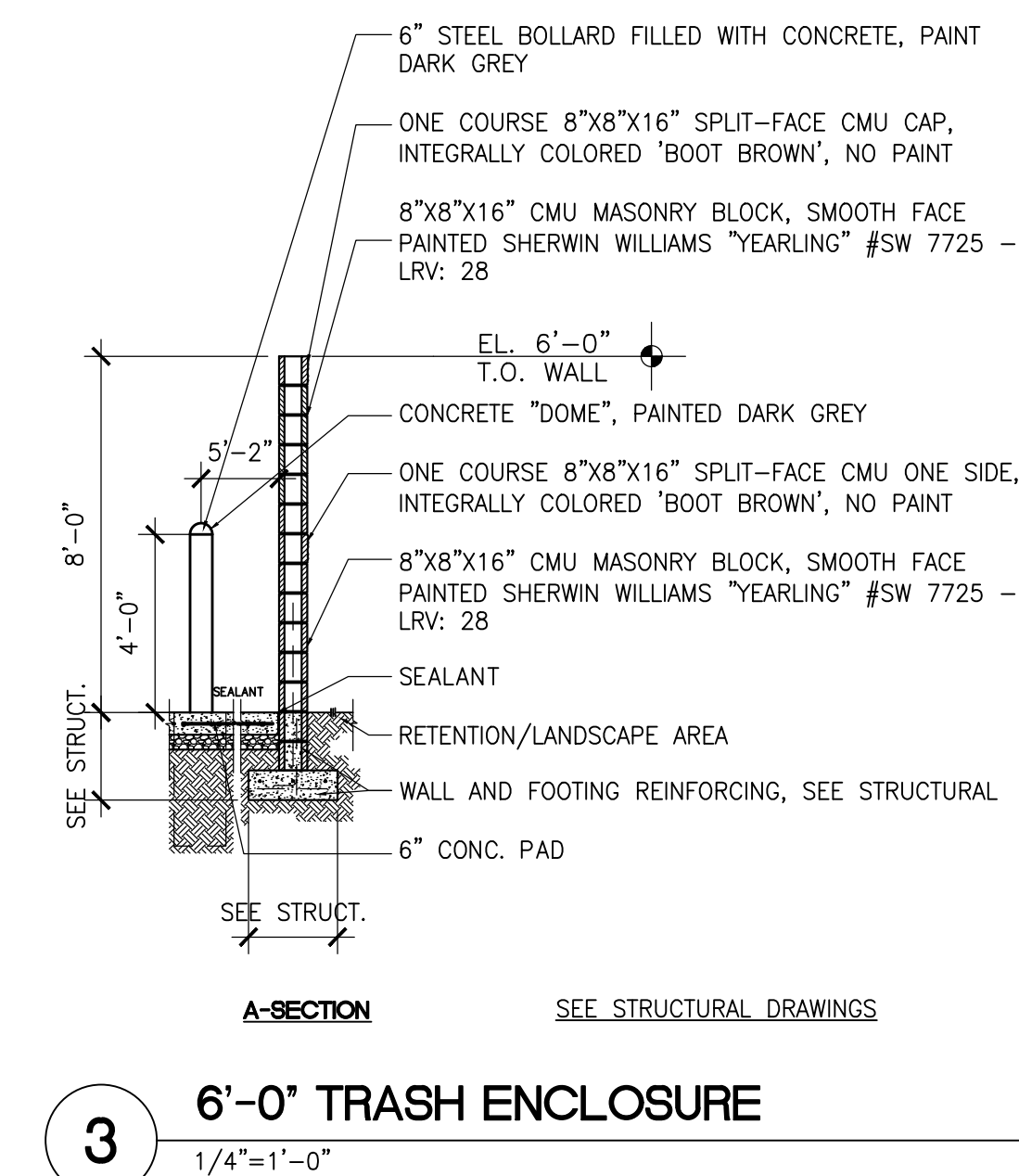
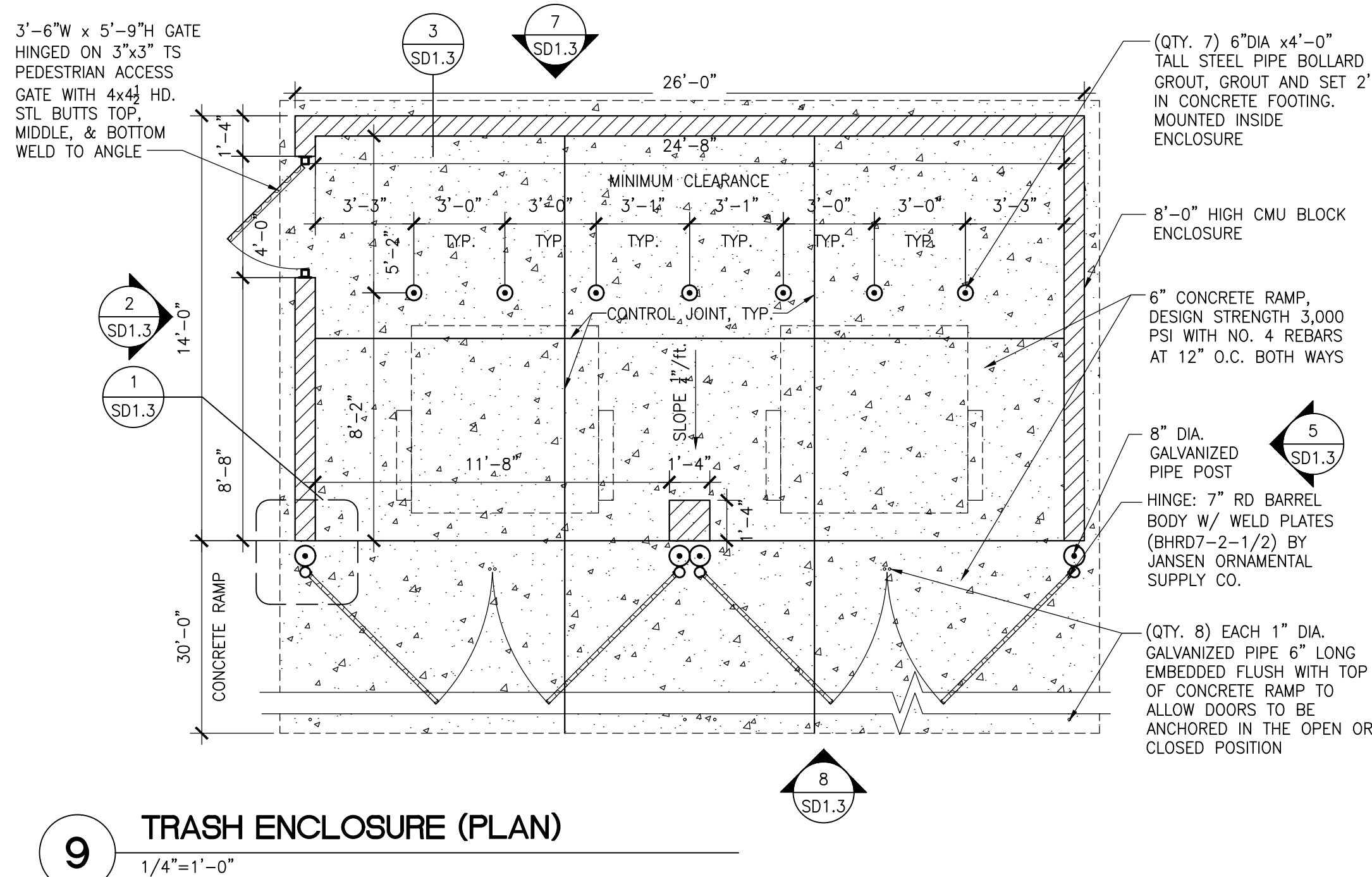
**2 TEMPORARY EXTRUDED CURB**  
1"=1'-0"

SEE CIVIL PLANS



**1 GUARD POST**  
1"=1'-0"







OWNER: MKC HOLDINGS LLC  
 APN #: 408-24-536B  
 2019-0036008 YCR

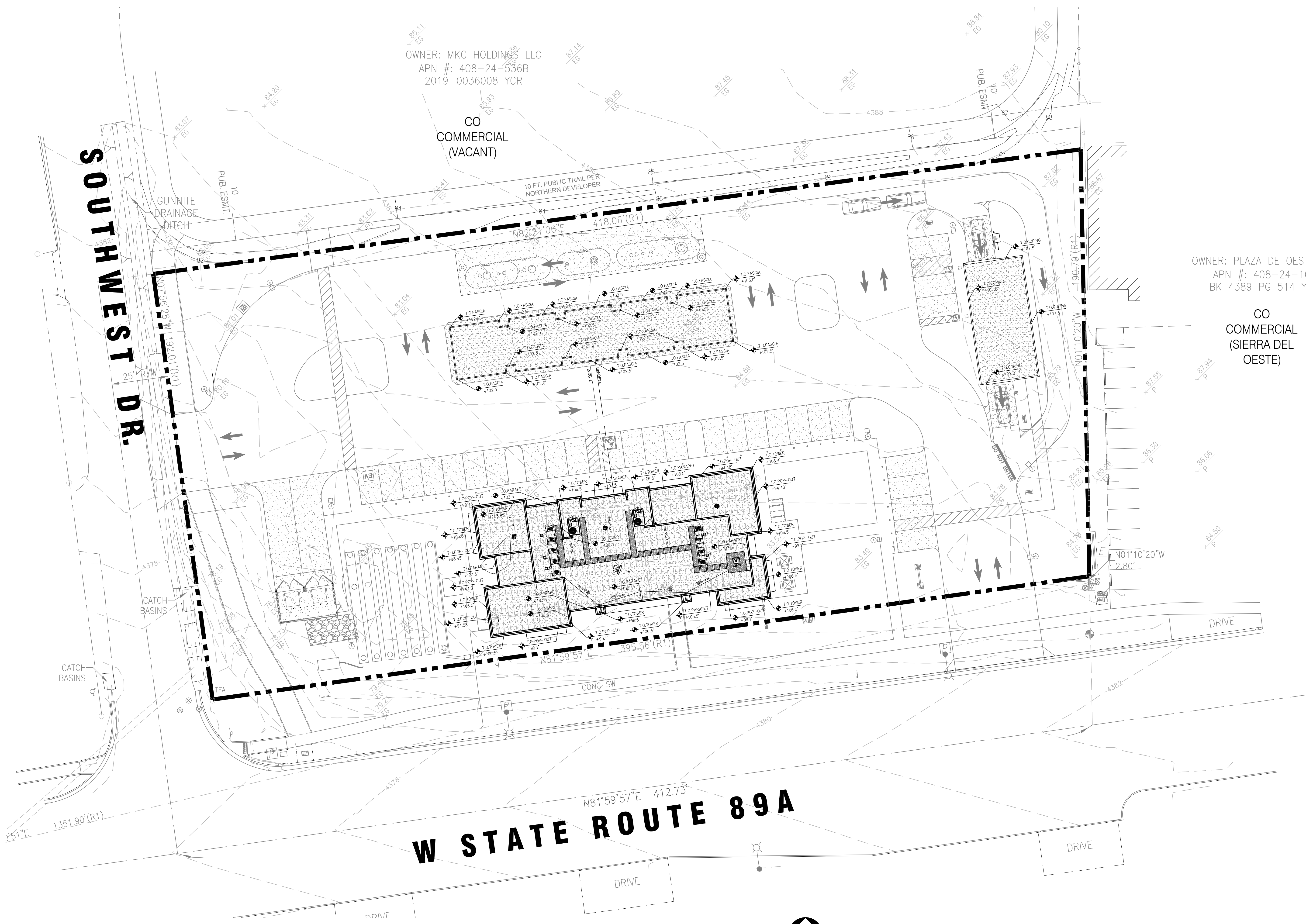
CO  
 COMMERCIAL  
 (VACANT)

OWNER: PLAZA DE OESTE LLC  
 APN #: 408-24-106  
 BK 4389 PG 514 YCR

CO  
 COMMERCIAL  
 (SIERRA DEL  
 OESTE)

**SOUTHWEST DR.**

**W STATE ROUTE 89A**



1 BUILDING ROOF PLAN  
 SCALE: 1" = 20'-0"

