



City of Sedona
102 Roadrunner Dr.
Bldg. 108
Sedona, AZ 86336
(928) 204-7111
sedonaaz.gov

Public Works Department

To Whom It May Concern:

The City of Sedona, Arizona is issuing **Addendum #3** to the plans and specifications as originally issued at the time of solicitation for bids for the **PR-03c Ranger Station Improvements Project**. For any bid to be considered responsible and responsive, receipt of this addendum must be acknowledged.

This Addendum provides for revisions made to the project drawings and bid tab.

As specified in the Instructions to Bidders, this Addendum, upon issuance, has become a part of the Contract Documents. This Addendum consists of 3 pages including this page and affects 3 changed bid sheets, 28 plan sheets, and 0 Technical Specification.

This Addendum changes or adds the following:

1. DRAWINGS:

- 1.1. **Replace** Civil Plan Set with Civil Plan Set seal dated April 20, 2023, all sheets, C1 through C7. Generally, the changes have been clouded on both the civil and landscape plans. The plans reflect the following changes: the shared use path has been widened to 10ft, ADA parking stalls north of barn removed, trash dumpster removed, all lighting fixtures removed, playground made smaller and grass area larger, clean out added to house, ADA parking stalls south of barn moved closer to restroom building, interpretive sign removed, Sedona Park sign removed, concrete header removed, hand railing has changed, etc.
- 1.2. **Additional** Civil Plan Set sheets to be included in bid set, SWPPP, C8 & C9.
- 1.3. **Replace** Landscape Plan Set with Landscape Plan Set revision dated April 21, 2023 , all sheets, LA-001 through LA-603 (See note 1.1 above)
- 1.4. Sheet C4 – Note to “Demolish Section of existing wall to allow SUP to be Flush with Driveway” is deleted.
- 1.5. Sheet C4 – Delete “Notes: 1. Demolish and remove existing sidewalk and stairs and reconstruct per landscape plans.
- 1.6. Sheet C4 – Key Note 31 “Install removable chain gate” is no longer part of this bid.
- 1.7. Sheets C4 & C5 – Demolition Key Note 1 “Remove and dispose existing concrete” has already been performed by others and no longer part of this bid.
- 1.8. Sheet C4 – Trash dumpster and ADA parking north of existing barn has been removed from this project.
- 1.9. Sheet C4 – Water shutoff Valve (Key Note 4) and clean out (Key Note 9) have been added to the east side of the existing house.
- 1.10. Sheet C4 and C5– Key Note 21 – Stabilized decomposed granite surfacing per detail B on C2 was increased to 10 foot width as noted on plans.
- 1.11. Sheet C4 – Demolition Key Notes 5 & 6 have been added.
- 1.12. Sheet C5 – Lighting per Landscape Plans (Typ.) is removed from this bid.
- 1.13. Sheet C5 and LA-202 Restroom – Owner to purchase modular restroom building. Work under this bid includes construction of the pad, installation of retaining wall and railing, installation of water service line and shut off valve (outside of sidewalk) installation of clean out (Key Note 9) and remove and dispose existing sewer line and install electrical conduit with mule tape to center of pad.
- 1.14. Sheet LA-003 – Owner calls attention to Landscape Note 18 requiring shrub beds to have red rock landscape mulch.



City of Sedona
102 Roadrunner Dr.
Bldg. 108
Sedona, AZ 86336
(928) 204-7111
sedonaaz.gov

Public Works Department

Material Schedule on Landscape plans M-1 Type 1, M-2 Type 2 and M-3 Type 3 materials shall be constructed as shown on civil plans.

2. BID SCHEDULE:

- 2.1. **Replace** Bid Schedule with Addendum #3 Bid Schedule with updated quantities with Addendum #3 label at the top.
- 2.2. Boulders are available at water treatment plant yard. Contractor to select boulders, load boulders into appropriate vehicle, and transport to project site.
- 2.3. The bid tab reflects the following changes: All changes reflected on the plans, removal of a portion of the shared use path as constructed by others, removal of 2" water tap – Owner has coordinated with Arizona Water Company, restroom building removed – will be purchased by owner (site preparation and extension of utilities still required), bike rack, waste receptacles and picnic tables will be purchased and installed by Owner, removed chain gate and remove lockable electrical outlets.

3. REQUEST FOR INFORMATION:

- 3.1. **Question** – How are cost increases to be accounted for? **Response** - *General Conditions- Section 30, D. For either an increase or decrease in cost, no claim shall be made by the Contractor for any loss of anticipated profits.*
- 3.2. **Question** – The wall on the Southeast corner of the project is called out as a CMU wall in the Civil plans (Sheet C5, Note 14 -Construct Seat Wall Per Detail H on C2) and as a dry stack wall in the Landscaping Plans (Sheet LA-101, Note 1 – Wall-Dry Stack). What type of wall should this be? **Response** – *CMU wall per Civil plans – CMU shall be stained – Color selected by owner.*
- 3.3. **Question** – Is the removal and disposal of the Existing Sewer Line as shown on SHT C5 Note 8 incidental to the installation of the installation of the new sewer line? **Response** - *Yes*
- 3.4. **Question** – The wall on the Southwest side of the Future Playground Area is called out as a Gabion Seat Wall in the Civil plans (Sheet C5) and in the Landscaping Plans the wall is broken up into two different types of walls, Dry Stack Wall and Gabion Seat Wall (Sheet LA-101, Note 1 – Wall-Dry Stack & Note 13 – Gabion Retaining/Seat Wall). What type of wall should this be? **Response** – *Shall be according to Landscape plans*
- 3.5. **Question** – Sheet C5, Construction Note 12 Calls for 12" HDPE Storm Drain, however item 27 in the Bid Schedule calls out 12" CMP. What type of pipe should be used? **Response** – *12" HDPE per civil keynote 12 on C5 and 18" CMP per civil keynote 10.*
- 3.6. **Question** – Bid Item Number 37 and 44 both call out the Concrete Steps on the project. Bid Item 44 has a dimension of 47 SF, which would match the dimensions of the steps on Sheet C. Should the steps on Sheet C5 be paid under bid item 44 and the steps on C4 be paid under bid item 37? **Response** – *Yes, both shall be Red Rock Sedona.*
- 3.7. **Question** – Bid Item Number 36 & 37 both call for the handrails with the ADA Ramp and Steps. However, Bid Item 46 also calls out the same "Stair and Ramp Railing". Where should the railing for the concrete steps and ADA Ramp be paid? **Response** – *See Updated Detail 5 on LA-203*
- 3.8. **Question** – Bid Item Number 34 and 49 both call for the stripping and signage of the ADA Parking Stall. Where should the ADA striping and signage be paid? **Response** – *Bid Item 49 deleted only 1 location for ADA parking stalls, just west of restroom. (Item 34 remains)*



City of Sedona
 102 Roadrunner Dr.
 Bldg. 108
 Sedona, AZ 86336
 (928) 204-7111
 sedonaaz.gov

- 3.9. **Question** – Bid Item Number 38 and 50 both call for the Removeable Chain Gate/Barricade. Where should the striping and signage be paid? **Response** – *This has been eliminated from the bid.*
- 3.10. **Question** – What should be included in Bid Item Number 55 – Lighting/Electrical Allowances? **Response** – *Electrical conduit, mule tape and capped ends - no lockable outlet*
- 3.11. **Question** – In the Bid Schedule, Item Number 56 – Parking Lot Lighting has a quantity of 4 EA, however on Sheet LA-004 in the Site Amenities Schedule the quantity listed is 5. Can you confirm which quantity is correct? **Response** – *All lighting has been eliminated.*
- 3.12. **Question** – In the Bid Schedule, Item Number 59 – Bench has a quantity of 6 EA, however on Sheet LA-004 in the Site Amenities Schedule the quantity listed is 8. Can you confirm which quantity is correct? **Response** – *Benches eliminated from bid, Owner to provide and install.*
- 3.13. **Question** – Sheets LA-101 and LA-102 have Construction Note 23 – Steel Edging, however there is no bid item for this work? Should this be incidental to another bid item? **Response** – *Yes, quantity has been decreased and shall be incidental to bid item 7 in Bid Alternate – Landscape Bed.*
- 3.14. **Question** – The Bid Schedule has an item for a Demonstration Garden. Where in the plans is this located and what should it include? **Response** – *This item is not included in this bid.*

Attention is called to Note 18 on LA-003 specifying rock ground cover.

ACKNOWLEDGEMENT

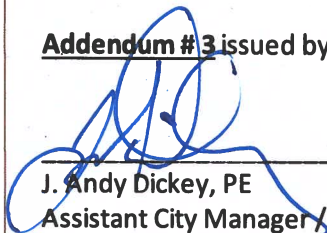
I have received **Addendum #3** for the **PR-03c Ranger Station Improvements Project** as described above and acknowledge it as part of the Contract Documents for the project.

Signature

Date

Print Business Name

Addendum #3 issued by J. Andy Dickey, PE, Assistant City Manager / Director of Public Works



 J. Andy Dickey, PE
 Assistant City Manager / Director of Public Works

4/25/23

 Date

Public Works Department

BID SCHEDULE

City of Sedona – Ranger Station Park Improvements Project Project # PR-03c – Addendum #3

ITEM NO.	ITEM DESCRIPTION	QTY	UNIT	UNIT PRICE	EXTENDED TOTAL
	DEMOLITION				
1	Remove & Dispose existing Concrete	0	SF		
2	Remove & Dispose existing Rip Rap	0	SF		
3	Remove & Dispose existing Storm drainpipe	5	LF		
4	Remove & Dispose existing Headwall	12	LF		
5	Sawcut existing asphalt pavement	150	LF		
6	Remove & dispose existing asphalt	675	SF		
	SUB TOTAL DEMOLITION				
	EARTHWORK				
5	Clearing & Grubbing	1	LS		
6	Excavation	1661	CY		
7	Embankment	2122	CY		
8	Import	461	CY		
	SUB TOTAL EARTHWORK				
	CONSTRUCTION IMPROVEMENTS				
9	Subgrade Prep	7629	SY		
10	Concrete Walking Path	357	SY		
11	Concrete Driveway Entrance	236	SY		
12	Concrete ADA Parking	55	SY		
13	ABC Parking Area	1936	SY		
14	Stabilized Decomposed Granite Trail	1847	SY		
15	Protect Existing Tree In Place	35	EA		
16	Construct Seat Wall	217	LF		
17	Construct Gabion Seat Wall	70	LF		
18	1" PVC Water Line	208	LF		
19	1" Brass Ball Valve	1	EA		
20	2" Water Service Line and Meter	1	LS		
21	1 ½ "PVC Water Line	187	LF		
22	1 ½" PVC Water Valve	3	EA		
23	Valve Box (M.A.G. 391)	5	EA		
24	Backflow Prevention Device	2	EA		
25	4" PVC Sewer Line	92	LF		
26	Sewer Cleanout with Frame and Cover	1	EA		
27	12" HDPE	30	LF		

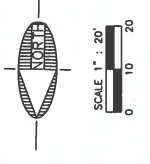
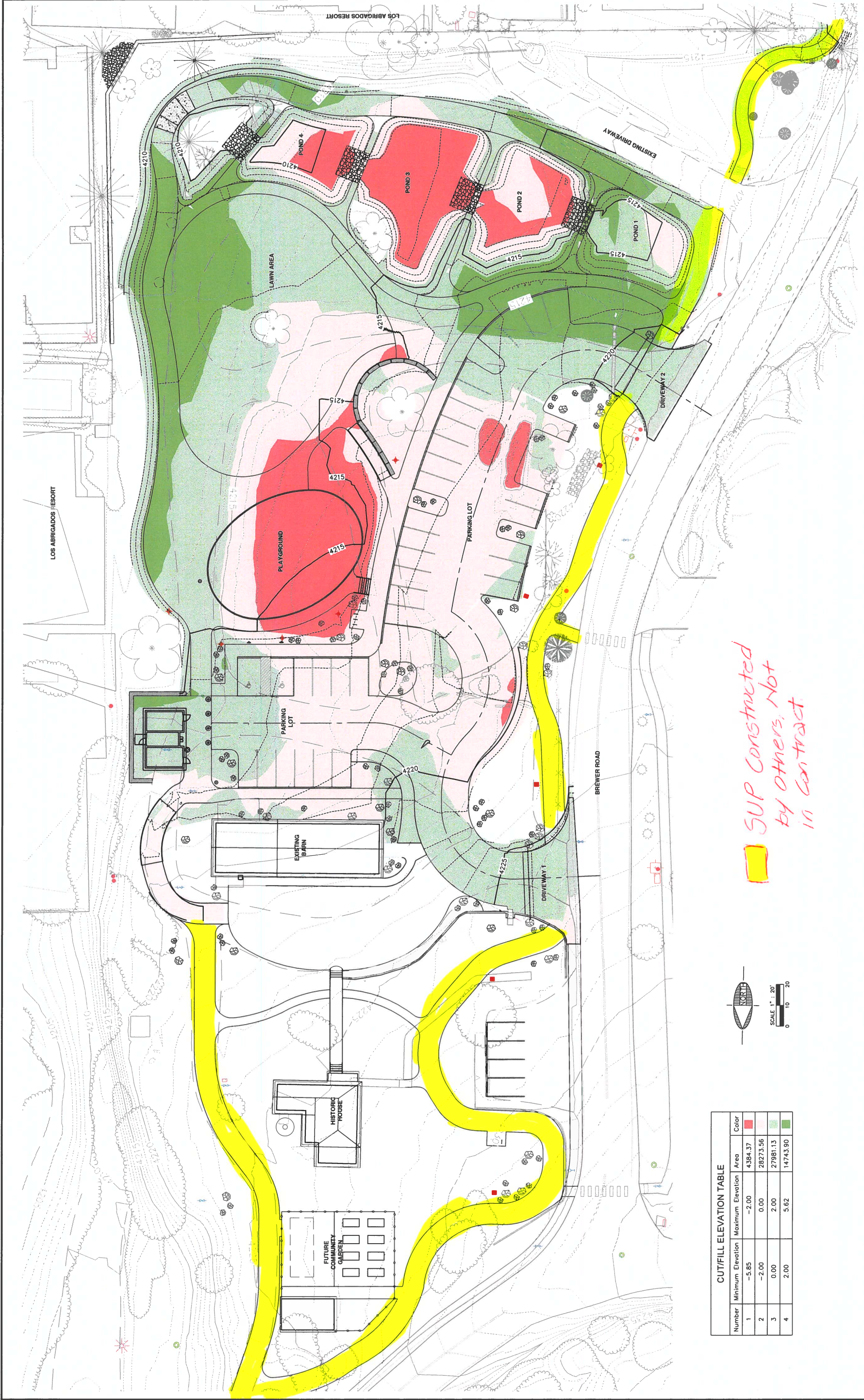
28	18" CMP	54	LF		
29	18" Flared End Section	2	EA		
30	Rip Rap D50=4" (8" Thick)	19	SY		
31	3'x3'x3' Gabion Basket	12	EA		
32	18"x9'x15' Gabion Mattress	4	EA		
33	3'x3'x4.5' Gabion Basket	8	EA		
34	Strip & Sign ADA parking Spaces	1	LS		
35	Single Dumpster Enclosure	0	EA		
36	ADA Ramp with Handrails	2	EA		
37	Concrete Steps with Handrails	1	LS		
38	Removable Chain Barricade	0	EA		
39	Install Lockable Electrical Outlet	0	EA		
40	1" PVC Electrical Conduit	68	LF		
41	1 ½" PVC Electrical Conduit	1073	LF		
	SUB TOTAL CONSTRUCTION IMPROVEMENTS				
	TOTAL CIVIL IMPROVEMENT COST				
	RESTROOM				
42	Restroom Site Prep	1	LS		
	SUB TOTAL RESTROOM				
	HARDSCAPE				
43	Red Drystack Retaining Wall	30	LF		
44	Sedona Red Concrete Steps	47	SF		
45	Sedona Red Concrete Landscape Curb	320	LF		
46	Stair and Ramp Railing	59	LF		
47	Metal Pipe Parking Stop	330	LF		
48	Fire Hose Parking Delineator	45	EA		
49	ADA Parking Lot Signage / Stripping Allowance	0	EA		
50	Chain Gate at Parking Lot Entry	0	EA		
51	Removable Bollard	4	EA		
52	Playground Equipment – Future by Owner	0	LS		
53	PIP Playground Surfacing – Future by Owner	0	SF		
54	Playground Drain System	0	LS		
	SUB TOTAL HARDSCAPE				
	SITE AMENITIES				
55	Lighting / Electrical Allowances	1	LS		
56	Parking Lot Lighting	0	EA		
57	Interpretive Sign Allowance	0	LS		
58	Park Sign	0	EA		
58	Bench	0	EA		
59	Litter receptacle	0	EA		

60	Tables	0	EA		
61	Bike Rack	0	EA		
SUB TOTAL SITE AMENITIES					
MICSELLANEOUS					
62	Mobilization	1	LS		
63	Erosion Control (SWPPP)	1	LS		
64	Quality Control and Testing	1	LS		
65	Construction Staking	1	LS		
66	Construction Observation	1	LS		
67	Traffic Control	1	LS		
SUB TOTAL MICSELLANEOUS					
TOTAL BASE BID					
BID ALTERNATES					
LANDSCAPE AND IRRIGATION					
1	Top Soil Import Allowance (for sodded areas)	6045	CF		
2	Landscape Boulders (1.5 Ton Avg.)	112	EA		
3	Willow & Walnut Trees	45	EA		
4	Evergreen Trees	16	EA		
5	Escarpment Oak Trees	2	EA		
6	Sod	10,28	SF		
7	Landscape Bed (inc. soil prep, rock mulch, plants)	9700	SF		
8	Native Grass and Forbs (seeded)	86,095	SF		
9	Demonstration Garden (inc. soil prep., rock mulch, plants)	0	SF		
10	Irrigation - Sod	7846	SF		
11	Irrigation – Landscape Bed	10267	SF		
12	Irrigation – Native Grass and Forbes	14537	SF		
13	Irrigation – Drip to the Trees in DG Areas	1	EA		
TOTAL ALTERNATE BID					
TOTAL BASE BID + ALTERNATE BID					

CIP: COMPLETE IN PLACE

Owner reserves the right to vary the quantities shown at their discretion. The contractor will accept the quantities if no corrections are made at the conclusion of the pre-bid meeting. All facilities incidental to the item are included in the unit price estimate. Bid Prices submitted include all local, state and federal taxes.

UNIT PRICES SHALL BE USED WHEN EXTENSION OF UNIT PRICES AND TOTAL AMOUNT CONFLICT. WRITTEN UNIT PRICES SHALL BE USED WHEN WRITTEN AND NUMERICAL UNIT PRICES CONFLICT. BID PRICES SUBMITTED INCLUDE ALL LOCAL, STATE AND FEDERAL TAXES. The City of Sedona reserves the right to reject all bids, or to award only the base bid, or to award a bid based upon the total of the Base Bid plus additive alternate(s) as selected for award from the additive alternate bid schedule, if additive alternate bid schedule is applicable.



CUT/FILL ELEVATION TABLE

Number	Minimum Elevation	Maximum Elevation	Area	Color
1	-5.85	-2.00	4384.37	Red
2	-2.00	0.00	28273.56	Light Green
3	0.00	2.00	27981.13	Light Yellow
4	2.00	5.62	14743.90	Dark Green

*SUP Constructed
by others, Not
in Contract.*

DRAWING NO. **C3**

SHT NO. 3 OF 9

REGISTERED PROFESSIONAL ENGINEER (Civil)
 2008
 ARIZONA
 REG. NO. 10000
 DATE: 10/1/2008
 Signature: *[Handwritten Signature]*

RANGER STATION PARK (250 BREWER ROAD)
 CITY OF SEDONA
 ARIZONA

OVERALL GRADING WITH CUT-FILL AREAS

JOB NO: 22015
 DATE: APR 23
 SCALE: 1"=20'
 DRAWN: MWJ
 DESIGN: AHB, MWJ
 CHECKED: AHB

75 Kollif Place
 Sedona, AZ 86336
 928.282.2039 fax
 www.ordurra.com

SWI
 Shephard & Westzetter, Inc
 An ARDURRA Company

REVISIONS

NO.	DESCRIPTION	DATE	BY
1	REVISIONS PER COMMUNITY DEVELOPMENT REVIEW	4/19/23	MWJ

Contact Arizona 811 at least two full working days before you begin excavation

ARIZONA 811
 Call 811 or click Arizona811.com