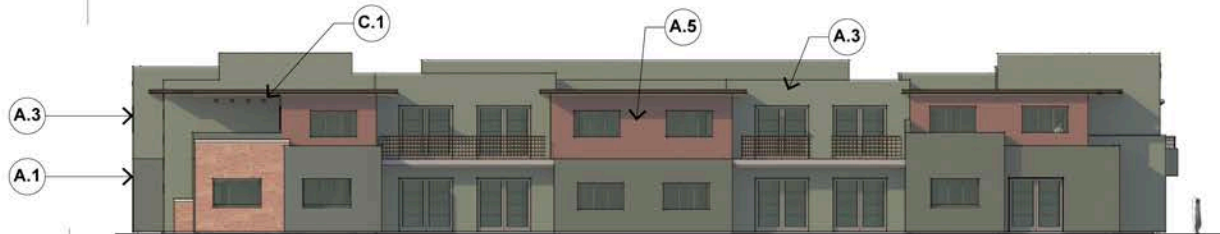


SIDE ELEVATION- 2



SIDE ELEVATION



END ELEVATION (SOUTH)



END ELEVATION (NORTH)

A.1 SW-6174	A.2 SW-6160	A.3 SW-7735
STUCCO.01- LRV.5	STUCCO.02- LRV.9	STUCCO.03- LRV.10
A.4 SW-6089	A.5 SW-6090	A.6 SW-6068
STUCCO.04- LRV.5	STUCCO.05- LRV.7	STUCCO.06- LRV.10
A.7 SW-7020	A.8 SW-7047	A.9 SW-7019
STUCCO.07- LRV.7	STUCCO.08- LRV.13	STUCCO.09- LRV.17
B.1 Roman Brick wall 1	B.2 Stone wall 1	B.3 Stone wall 2
ROMAN BRICK.01	STONE.01	STONE.02
C.1 Metal Material -1	C.2 Metal Material -2	C.3 Metal Material -3
METAL.01	METAL.02	METAL.03
D.1 Roof - Gray Metal	D.2 Roof - Slate Composite	D.3 Roof - Flat
ROOF.01	ROOF.02	ROOF.03
E.1 Concrete Paving	E.2 Stucco Wall Caps	F.1 Wood Soffit
CONCRETE.01	CONCRETE.02	WOOD.01

Exterior Finish Notes:

Paint: Sherwin Williams Paint

Stucco: Synthetic Integral Color, Sand Float Finish

Masonry: Roman Brick w/ cast concrete cap, Authentic Sedona Native Mix of River Rock & Red Cliff Stone

Fascia: Bronze Aluminum

Overhang & Canopy: Wood T&G Soffit w/ Steel Tube beams & columns.

Window / Door Frame: Bronze Aluminum

Low Slope Roof: Seamless w/ Acrylic Finish SW7047 - LRV.13

Pitch Roof: Raised Seamed Metal w/ Matching Fascia Trim (Treehouse)
Gray terracotta roof tile 'Ludowici', Ludoslate (Multi-Family)

Handrails / Guardrails: Painted metal railings
(steel pipe frame w/ perforated metal panel)

Concrete Paving: Integral Color Exposed Sand Finish w/ Scoring

Color Elevations

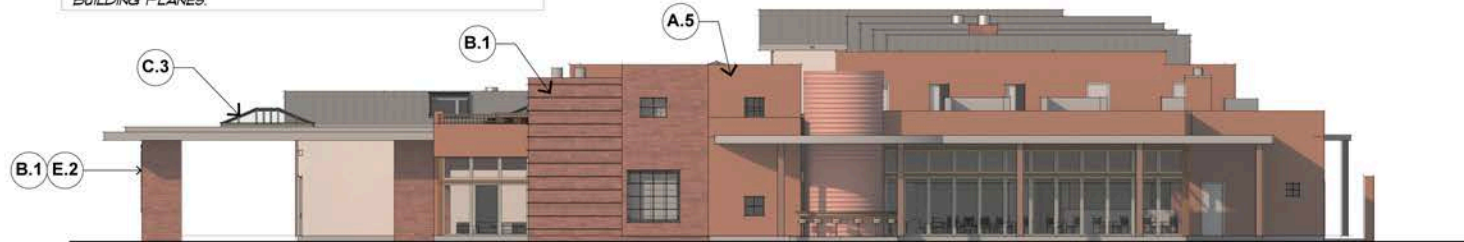
the Village at Saddlerock Crossing
Soldiers Pass Road & Highway 89A
Sedona Arizona

Stephen Thompson Architect, Sedona/Del Mar
Studio@StephenThompsonArchitect.com

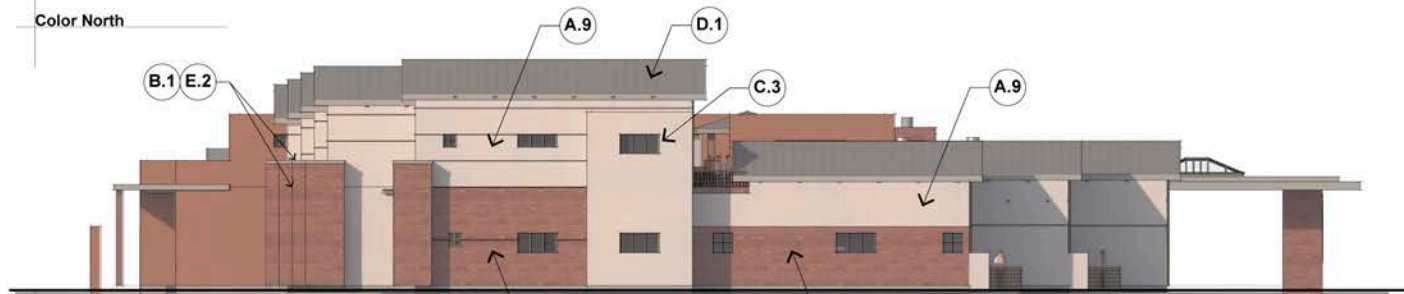
C: 928.301.5922 4/28/2023



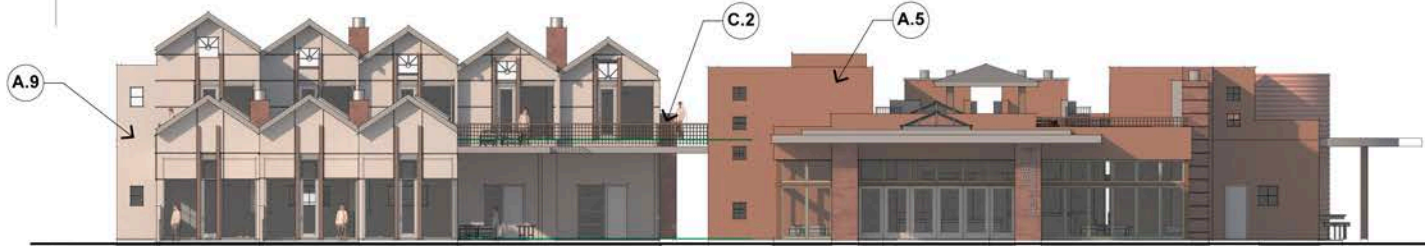
NOTE: SEE SHEETS 32, 34, 36, 38, AND 40 FOR REQUIREMENTS FOR CHANGE IN BUILDING MATERIALS TO SATISFY UNRELIEVED BUILDING PLANES.



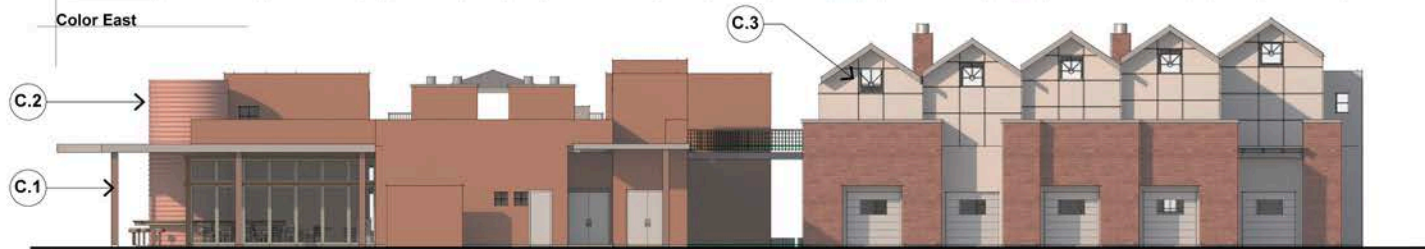
Color North



Color South-



Color East



Color West

A.1 SW-6174	A.2 SW-2846	A.3 SW-7735
STUCCO.01- LRV.5	STUCCO.02- LRV.9	STUCCO.03- LRV.10
A.4 SW-6089	A.5 SW-6090	A.6 SW-6068
STUCCO.04- LRV.5	STUCCO.05- LRV.7	STUCCO.06- LRV.10
A.7 SW-7920	A.8 SW-7047	A.9 SW-1919
STUCCO.07- LRV.7	STUCCO.08- LRV.13	STUCCO.09- LRV.17
B.1 Roman Brick wall 1	B.2 Stone wall 1	B.3 Stone wall 2
ROMAN BRICK.01	STONE.01	STONE.02
C.1 Metal Material -1	C.2 Metal Material -2	C.3 Metal Material -3
METAL.01	METAL.02	METAL.03
D.1 Roof - Gray Metal	D.2 Roof - Dark Composite	D.3 Roof - Flat
ROOF.01	ROOF.02	ROOF.03
E.1 Concrete Paving	E.2 Concrete Mill Cops	F.1 Wood Soffit
CONCRETE.01	CONCRETE.02	WOOD.01

Exterior Finish Notes:

- Paint: Sherwin Williams Paint
- Stucco: Synthetic Integral Color, Sand Float Finish
- Masonry: Roman Brick w/ cast concrete cap, Authentic Sedona Native Mix of River Rock & Red Cliff Stone
- Fascia: Bronze Aluminum
- Overhang & Canopy: Wood T&G Soffit w/ Steel Tube beams & columns.
- Window / Door Frames: Bronze Aluminum
- Low Slope Roof: Seamless w/ Acrylic Finish SW7047 - LRV.13
- Pitch Roof: Raised Seamed Metal w/ Matching Fascia Trim (Treehouse) Gray terracotta roof tile 'Ludowici', Ludoslate (Multi-Family)
- Handrails / Guardrails: Painted metal railings (steel pipe frame w/ perforated metal panel)
- Concrete Paving: Integral Color Exposed Sand Finish w/ Scoring

Color Elevations- Lobby
the Village at Saddlerock Crossing
 Soldiers Pass Road & Highway 89A
 Sedona Arizona

Stephen Thompson Architect, Sedona/Del Mar
 Studio@StephenThompsonArchitect.com
 C: 928.301.5922 4/28/2023





Color - West



Color - East



Color - North



Color - South

A.1 SW-6174	A.2 SW-2846	A.3 SW-7735
STUCCO.01- LRV.5	STUCCO.02- LRV.9	STUCCO.03- LRV.10
A.4 SW-6069	A.5 SW-6090	A.6 SW-6068
STUCCO.04- LRV.5	STUCCO.05- LRV.7	STUCCO.06- LRV.10
A.7 SW-7020	A.8 SW-7047	A.9 SW-7019
STUCCO.07- LRV.7	STUCCO.08- LRV.13	STUCCO.09- LRV.17
B.1 Roman Brick wall	B.2 Stone wall	B.3 Stone wall
ROMAN BRICK.01	STONE.01	STONE.02
C.1 Metal Material -1	C.2 Metal Material -2	C.3 Metal Material -3
MEIAL.01	MEIAL.02	MEIAL.03
D.1 Roof - Gray Metal	D.2 Roof - Slate (see spec)	D.3 Roof - Flat
ROOFE.01	ROOFE.02	ROOFE.03
E.1 Concrete Paving	E.2 Stainless Steel Sipe	F.1 Wood Soffit
CONCRETE.01	CONCRETE.02	WOOD.01

Exterior Finish Notes:

Paint: Sherwin Williams Paint

Stucco: Synthetic Integral Color, Sand Float Finish

Masonry: Roman Brick w/ cast concrete cap, Authentic Sedona Native Mix of River Rock & Red Cliff Stone

Fascia: Bronze Aluminum

Overhang & Canopy: Wood T&G Soffit w/ Steel Tube beams & columns.

Window / Door Frame: Bronze Aluminum

Low Slope Roof: Seamless w/ Acrylic Finish SW7047 - LRV.13

Pitch Roof: Raised Seamed Metal w/ Matching Fascia Trim (Treehouse) Gray terracotta roof tile 'Ludowic', Ludoslate (Multi-Family)

Handrails / Guardrails: Painted metal railings (steel pipe frame w/ perforated metal panel)

Concrete Paving: Integral Color Exposed Sand Finish w/ Scoring

NOTE: SEE SHEETS 32, 34, 36, 38, AND 40 FOR REQUIREMENTS FOR CHANGE IN BUILDING MATERIALS TO SATISFY UNRELIEVED BUILDING PLANES.

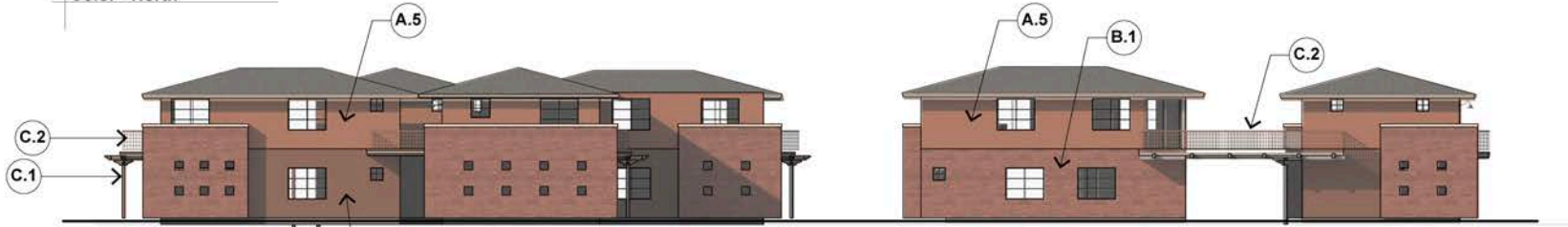
MF North - Color
the Village at Saddlerock Crossing
 Soldiers Pass Road & Highway 89A
 Sedona Arizona

Stephen Thompson Architect, Sedona/Del Mar
 Studio@StephenThompsonArchitect.com
 C: 928.301.5922 4/28/2023

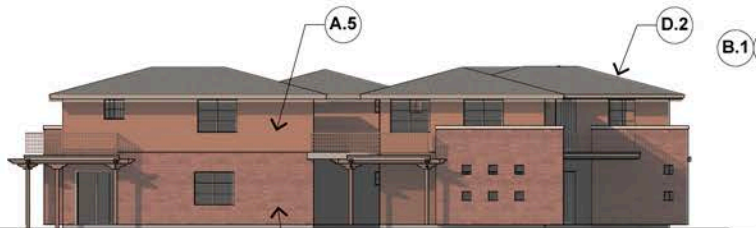




Color - North



Color - South



Color - West



Color - East

NOTE: SEE SHEETS 32, 34, 36, 38, AND 40 FOR REQUIREMENTS FOR CHANGE IN BUILDING MATERIALS TO SATISFY UNRELIEVED BUILDING PLANES.

MF South - Color
the Village at Saddlerock Crossing
 Soldiers Pass Road & Highway 89A
 Sedona Arizona
 Stephen Thompson Architect, Sedona/Del Mar
 Studio@StephenThompsonArchitect.com
 C: 928.301.5922 4/28/2023

Master Sign Plan

MONUMENT SIGNS
Saddlerock/ 89A Intersection

North Entry (89A)

BUILDING SIGNAGE
Building Mounted/ Business Tenant Signs

Cutout metal letters, indirectly lit with integral lighting of concealed source.

***STREET ADDRESS SIGNS**
Building Mounted

Addressing as required by fire code requirements.
* Exempted from the permit process.

***INFORMATION SIGNS**
Freestanding

Low-level and integrated into paving or landscape context and of color & material to harmonize with project design. It will not be visible from off site areas. General circulation lighting is expected to illuminate this signage. Compliant with Sedona city code Article 9.7. Includes permitted uses on the property, including, but not limited to, signs indicating the hours of operation, and such signs as "No Smoking," "Open," "Closed," "Restrooms," "No Solicitors," "Deliveries In Rear," current credit card signs, trade association emblems, and the like.

* Exempted from the permit process.

ON-SITE DIRECTORY SIGNS
Freestanding

Sign permit required per city code.

***ACCESSIBILITY SIGNS**

Various

ADA Parking, Building Entry, Restrooms
Where required by ADA and code requirements.
* Exempted from the permit process.

SUMMARY OF SIGNAGE

QTY	TYPE	LOCATION	AREA	HT.
2	MONUMENT SIGNS	Saddlerock/ 89A Intersection	25	8'
		North Entry (89A)	25	8'
9	BUILDING SIGNAGE	Hotel Lobby	18	16'
		Treeshouse Suites	8	16'
		Hotel Guest Rooms - East Wing	8	25'
		Hotel Guest Rooms - West Wing	8	25'
		Hotel Guest Rooms - North Wing	8	25'
		Multi-Family - South	40	15'
		Multi-Family - North	40	15'
15	STREET ADDRESS SIGNS	All buildings, per fire code.		
8	INFORMATION SIGNS	As indicated on plan.	16	3'
3	ON-SITE DIRECTORY SIGNS	Hotel & Multi-Family Properties	6	6'
As req'd per ADA	ACCESSIBILITY SIGNS	Throughout site as req'd per ADA		

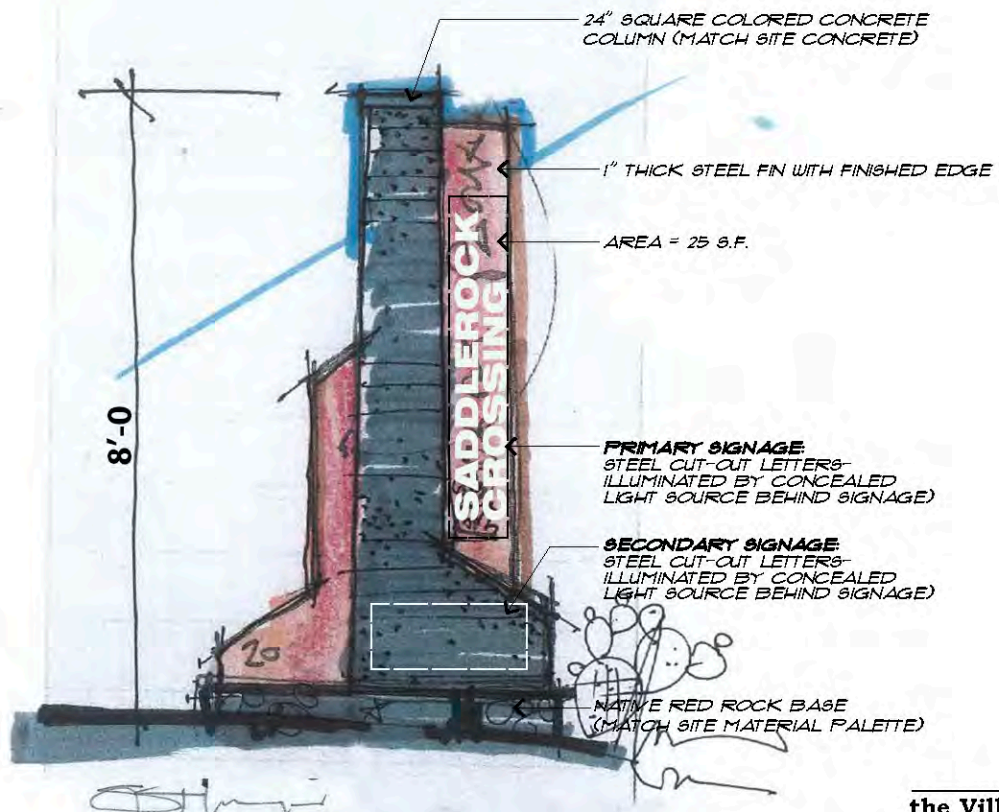


MASTER SIGN PLAN

TOTAL SITE AREA= 6.36 ACRES

the Village at Saddlerock Crossing
Soldiers Pass Road & Highway 89A
Sedona Arizona

Stephen Thompson Architect, Sedona/Del Mar
Studio@StephenThompsonArchitect.com
C: 928.301.5922 4/28/2023 3/19/2021 4:32:58 PM



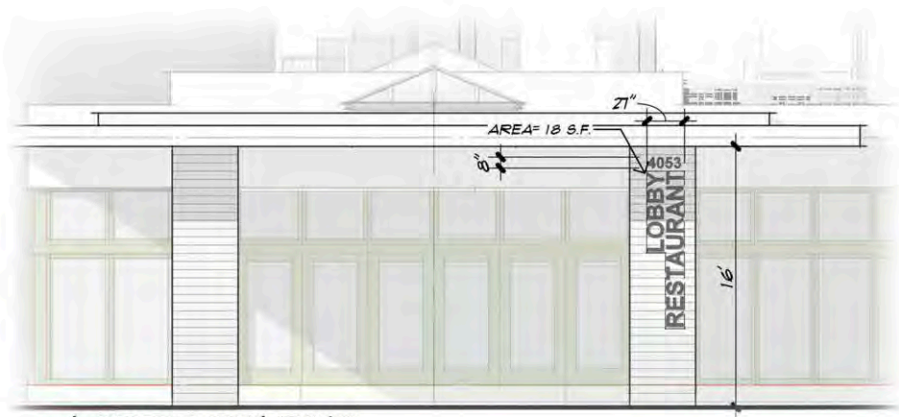
MONUMENT SIGNAGE

LOCATED OUTSIDE 30' VISIBILITY TRIANGLE
FONT AND FINISH TO COMPLEMENT OTHER SITE SIGNAGE.

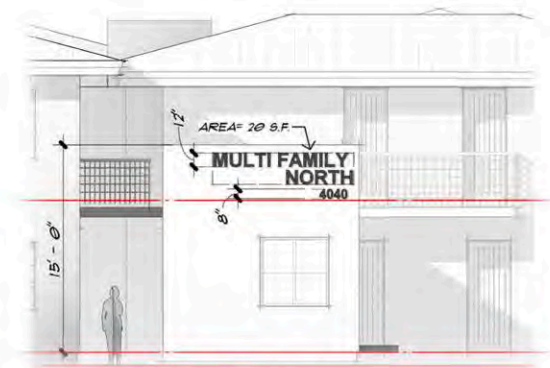


the Village at Saddlerock Crossing
Soldiers Pass Road & Highway 89A
Sedona Arizona

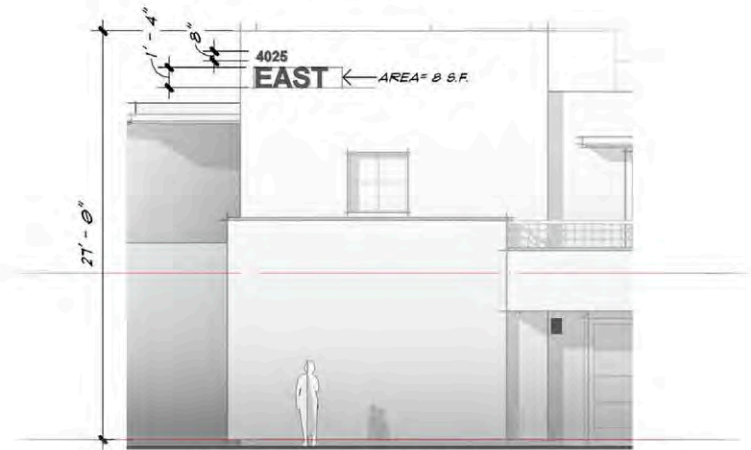
Stephen Thompson Architect, Sedona/Del Mar
Studio@StephenThompsonArchitect.com
C: 928.301.5922 4/28/2023 3/18/2021 4:32:55 PM



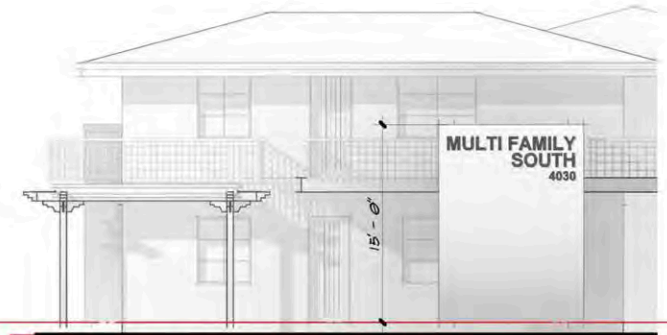
LOBBY BUILDING



MULTI- FAMILY NORTH



TYP. GUEST ROOM WING



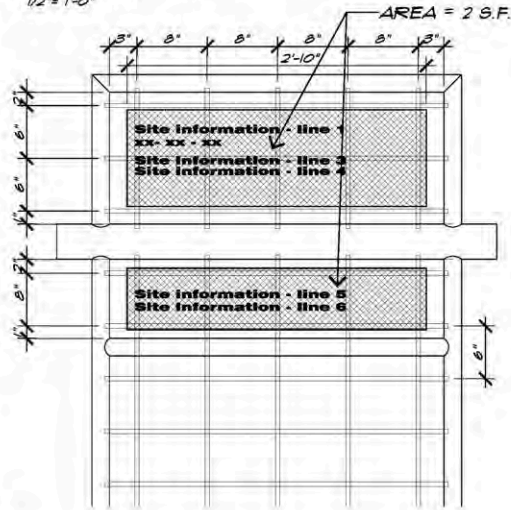
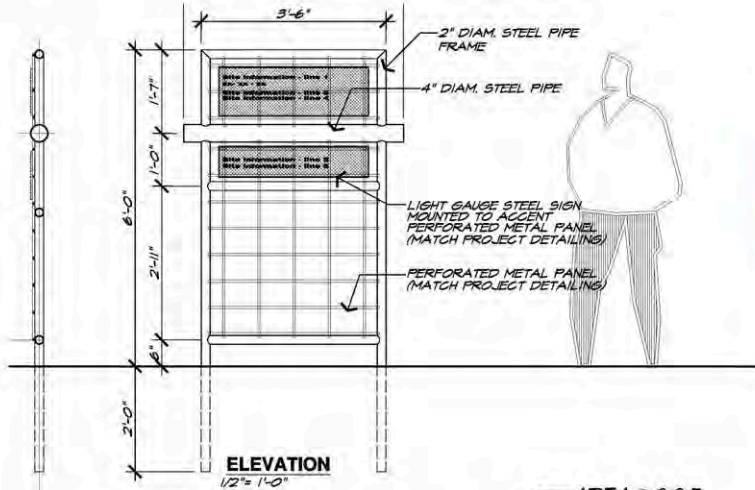
MULTI- FAMILY SOUTH

BUILDING SIGNAGE

FONT AND FINISH TO COMPLEMENT OTHER SITE SIGNAGE.

the Village at Saddlerock Crossing
 Soldiers Pass Road & Highway 89A
 Sedona Arizona

Stephen Thompson Architect, Sedona/Del Mar
 Studio@StephenThompsonArchitect.com
 C: 928.301.5922 4/28/2023 3/19/2021 4:32:58 PM

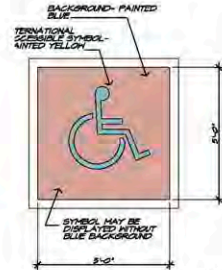


SITE SIGNAGE

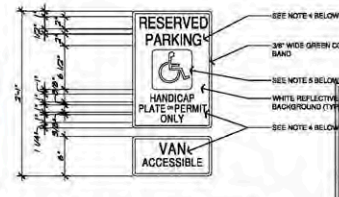
2021

DIRECTORY SIGNAGE

FONT AND FINISH TO COMPLEMENT OTHER SITE SIGNAGE.



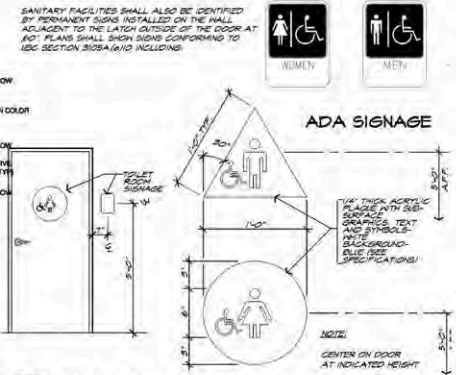
NOTE: AT BRIDGE PAVEMENTS PREFABRICATED CAST IN PLACE WITH ALTERNATING COLOR PAVEMENT (1 PAVEMENT)



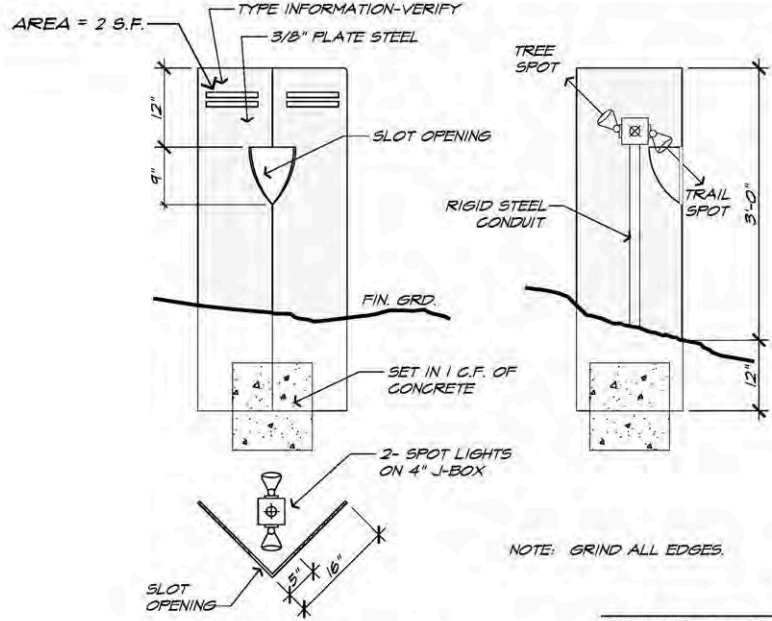
1. BOTTOM OF SIGN SHALL BE NO LESS THAN 36 INCHES AND MORE THAN 34 INCHES ABOVE FIN. GRADE
2. SIGNS SHALL BE PROPERLY CENTERED WITHIN THE PARKING SPACE
3. SIGN FACE SHALL BE LOCATED NO FURTHER THAN 6'-0" FROM THE FRONT OF EACH PARKING SPACE
4. ALL LETTERING SERIES 15' GREEN COLOR
5. INTERNATIONAL SYMBOL OF ACCESSIBILITY SHOWN WHITE ON 6" X 6" BLUE FIELD W/ 1/2" RADIUS CORNERS

1 ACCESSIBLE PARKING SYMBOL
1/2" = 1'-0"

ACCESSIBILITY SIGNAGE



3 INT'L SYMBOLS OF ACCESSIBILITY
NO SCALE



PLAN VIEW

INFORMATION SIGNAGE

FONT AND FINISH TO COMPLEMENT OTHER SITE SIGNAGE.

the Village at Saddlerock Crossing
Soldiers Pass Road & Highway 89A
Sedona Arizona

Stephen Thompson Architect, Sedona/Del Mar
Studio@StephenThompsonArchitect.com
C: 928.301.5922 4/28/2023 3/19/2021 4:32:58 PM

Renderings



Lobby View from Multi-Family South
the Village at Saddlerock Crossing
Soldiers Pass Road & Highway 89A
Sedona Arizona

Stephen Thompson Architect, Sedona/Del Mar
Studio@StephenThompsonArchitect.com
C: 928.301.5922 4/18/2021



View from 89a looking south
the Village at Saddlerock Crossing
Soldiers Pass Road & Highway 89A
Sedona Arizona
Stephen Thompson Architect. Sedona/Del Mar
Studio@StephenThompsonArchitect.com
C: 928.301.5922 4/18/2021



Northwest view from parking
the Village at Saddlerock Crossing
Soldiers Pass Road & Highway 89A
Sedona Arizona
Stephen Thompson Architect. Sedona/Del Mar
Studio@StephenThompsonArchitect.com
C: 928.301.5922 4/18/2021