



ROOF AREAS:

BUILDING 1:
total roof SF = 7,652 SF (5% = 382 SF)
mech units (2) SF = 86 SF

BUILDING 2:
total roof SF = 7,207 SF (5% = 360 SF)
mech units (16) SF = 344 SF

BUILDING 3:
total roof SF = 7,620 SF (5% = 381 SF)
mech units (10) SF = 215 SF

ROOF PLAN GENERAL NOTES:

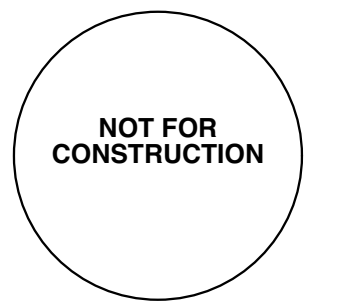
- A. Do not begin work without holding a pre roofing conference. Notify architect, roofing manufacturer, installer, sheet metal subcontractor and other related subcontractors a minimum of 7 days before commencing roofing work.
- B. Roofing supplier, manufacturer and installer shall review all roofing details and advise architect on any recommended changes. Unless notified otherwise, details will be assumed to have been reviewed and approved by all parties.
- C. Provide crickets behind all mechanical equip, curbs, roof hatch curbs, etc.
- D. Minimum slope at all cricket valleys shall be 1/4" per foot. Do not scale plan for cricket dimensions.
- E. All cricket slopes shall be achieved in a manner acceptable to Architect and in accordance with roofing manufacturer's requirements.
- F. Provide curbs and flashing at any equipment not provided with premanufactured curbs.
- G. Separate all dissimilar metals with bituminous coatings or other methods acceptable to the Architect.
- H. Flashing details shall be in strict compliance with approved roofing manufacturers standards for application and shall be fabricated in accordance with the latest edition of "Sheet Metal and Air Conditioning Contractors National Association" (SMACNA) technical manual.
- I. All sheet metal scuppers, sleeves, etc., penetrating roofing or parapets to which roofing must attach shall be a minimum of 20 gauge, all soldered construction, with minimum 3" wide flanges.
- J. All scuppers shall be constructed with four full sides, with flanges through the thickness of the wall, forming a complete "sleeve" through the wall.
- K. Provide flashing per roof manufacturer's standard details at all electrical conduit, HVAC lines, etc.
- L. Flashing shall be factory finished where indicated. Galvanized unfinished flashing exposed to view shall be washed, primed, and finished with paint per the specifications.
- M. Provide concrete splash blocks below all scuppers and at all drain leaders that daylight above grade or onto other roof surfaces.
- N. Contractor and all sub-trades shall exercise the necessary care to limit traffic and prevent damage to the roof membrane.

ROOF PLAN KEYNOTES:

- 1. Roof Cricket at slope 1/4"=1'-0", typ.
- 2. 42" high mechanical screen, typ.
- 3. Mechanical unit, typ.
- 4. 6'-0" offset from parapet edge line.
- 5. Mechanical units / screens above maximum height requirement.

SUNSET LOFTS, LLC
15010 N. 78th Way, Suite 109, Scottsdale, AZ 85250

SEDONA SUNSET
220 Sunset Drive | SEDONA, AZ 86336

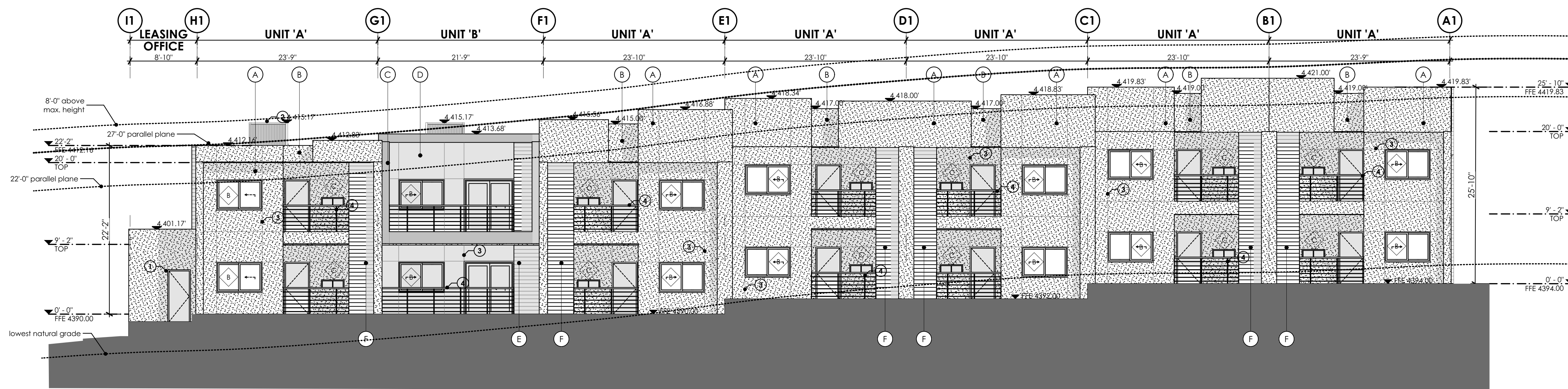


PROJECT NUMBER 21_005 DATE OF ISSUE 06.01.23

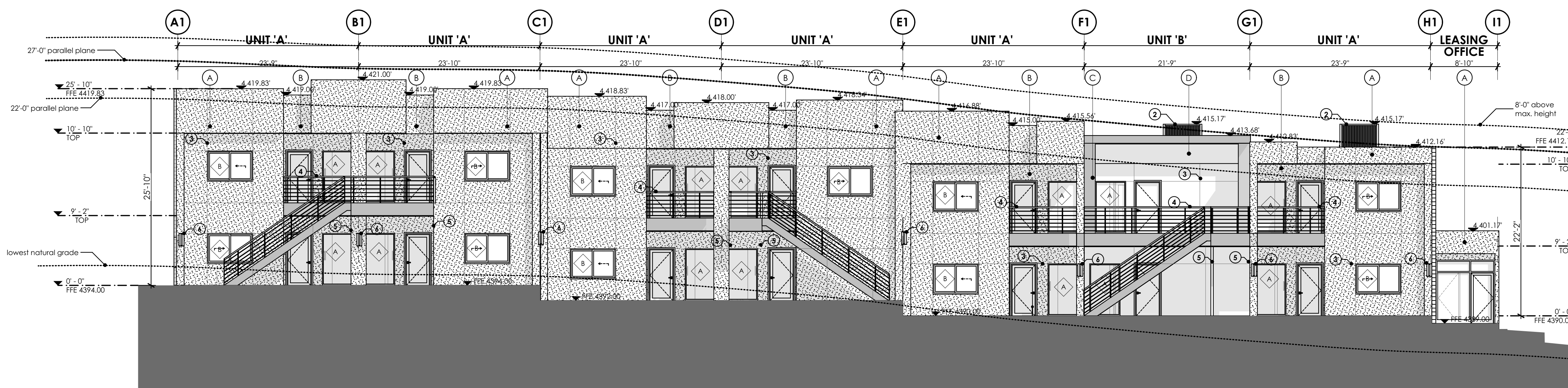
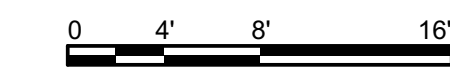
roof plan

A-102

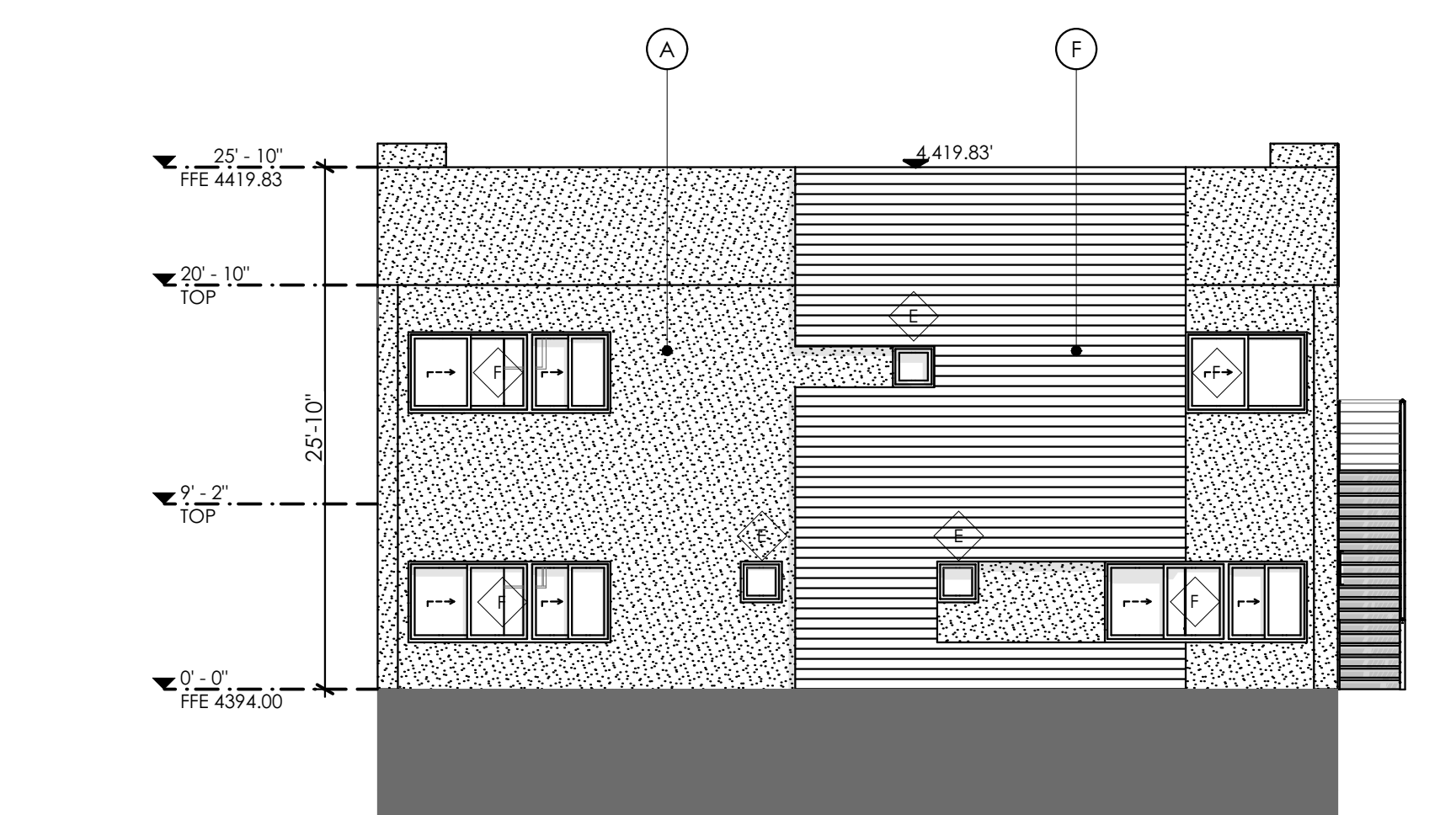
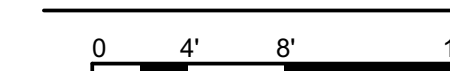
ROOF PLAN
0 8' 16' 32'
NORTH



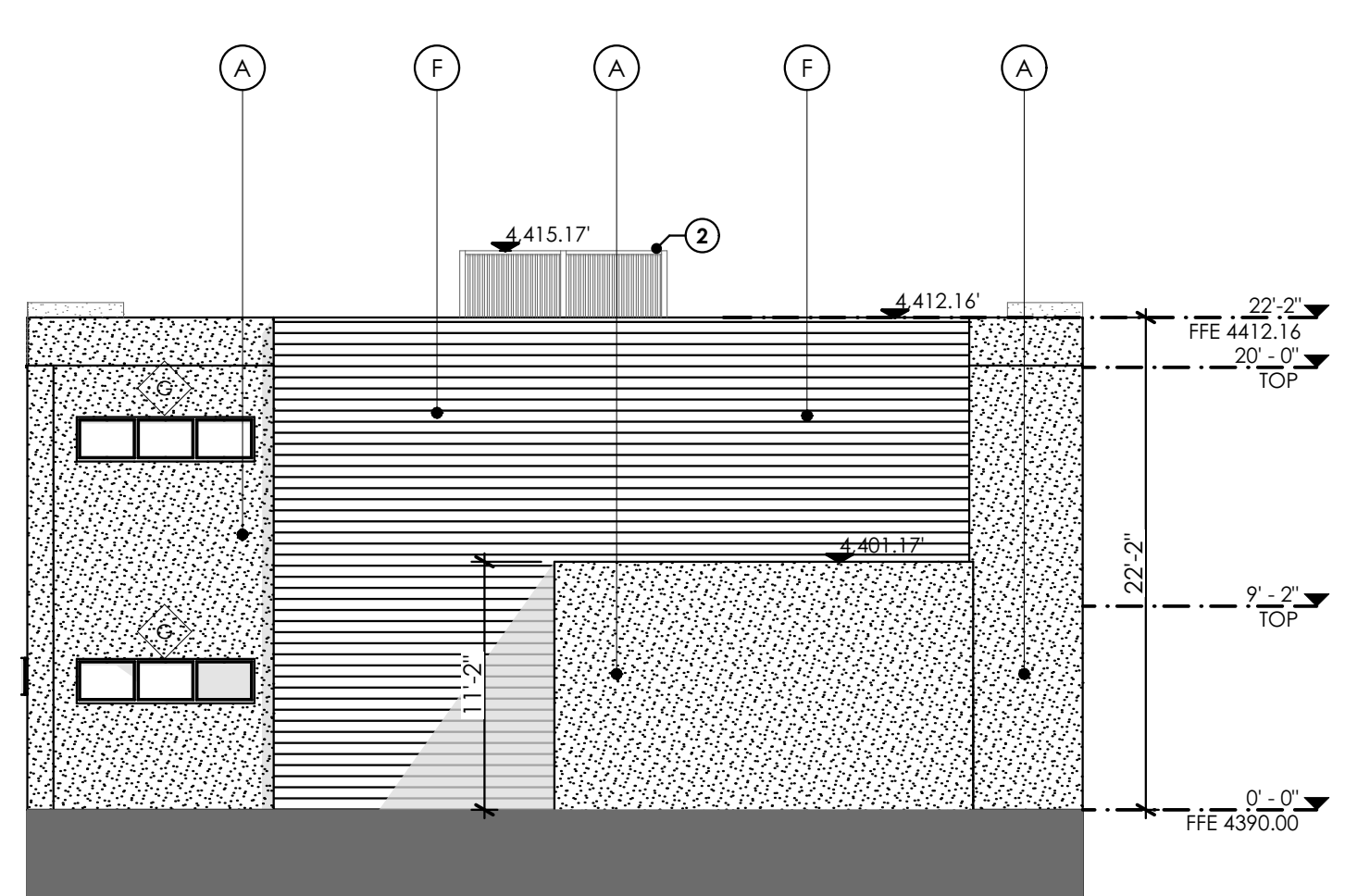
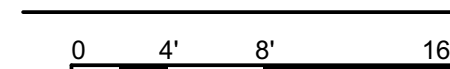
NORTH ELEVATION_BLDG 1



SOUTH ELEVATION_BLDG 1



WEST ELEVATION_BLDG 1



EAST ELEVATION_BLDG 1



SECTION / ELEVATION LEGEND

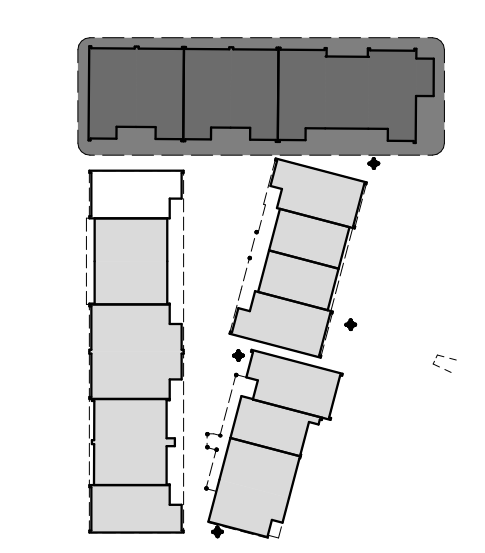
- (A) MATERIAL: STUCCO PAINTED
COLOR: DUNN EDWARDS- DEA15 NORTHERN TERRITORY
- (B) MATERIAL: STUCCO PAINTED
COLOR: DUNN EDWARDS- DE6118 SANDPIT
- (C) MATERIAL: STUCCO PAINTED
COLOR: DUNN EDWARDS- DE6350 DARK ENGINE
- (D) MATERIAL: STUCCO PAINTED
COLOR: DUNN EDWARDS- DE6327 RHINOCEROS
- (E) MATERIAL: CERTAINTED VINYL SIDING
MODEL: MONOGRAM, COLOR: SLATE
- (F) MATERIAL: CERTAINTED VINYL SIDING
MODEL: MONOGRAM, COLOR: ESPRESSO
- 42" HIGH STEEL RAILING
PAINTED - DE6350 DARK ENGINE
- MATERIAL: CMU 8 x 16, RUNNING BOND, SPLIT
FACE: COLOR: TBD

ELEVATION GENERAL NOTES:

- A. All exposed stem walls shall be of masonry type indicated for wall above floor line.
- B. Sidewalks at building and structures shall match finish floor at doors and slope away.
- C. Paint all exposed metal that is not specified to receive factory finish.
- D. All exposed flashing shall be factory finished.
- E. See plans and schedule for door and window types and sizes.

ELEVATION KEYNOTES:

- 1. Fire Riser Room location.
- 2. Mechanical screen, painted.
- 3. Stucco control joint, align per elevation.
- 4. Steel railings and guardrails, painted DE6350 Dark Engine.
- 5. Steel column painted, DE6350 Dark Engine. See structural drawings.
- 6. Wall mounted light fixture, typ. See electrical drawings.
- 7. Exterior signage.

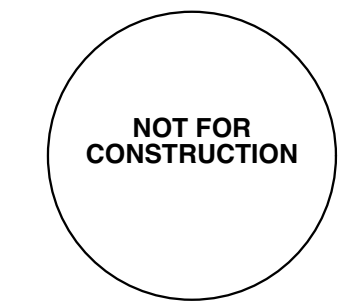


KEY PLAN

SUNSET LOFTS, LLC
15010 N. 78th Way, Suite 109, Scottsdale, AZ 85250

SEDONA SUNSET

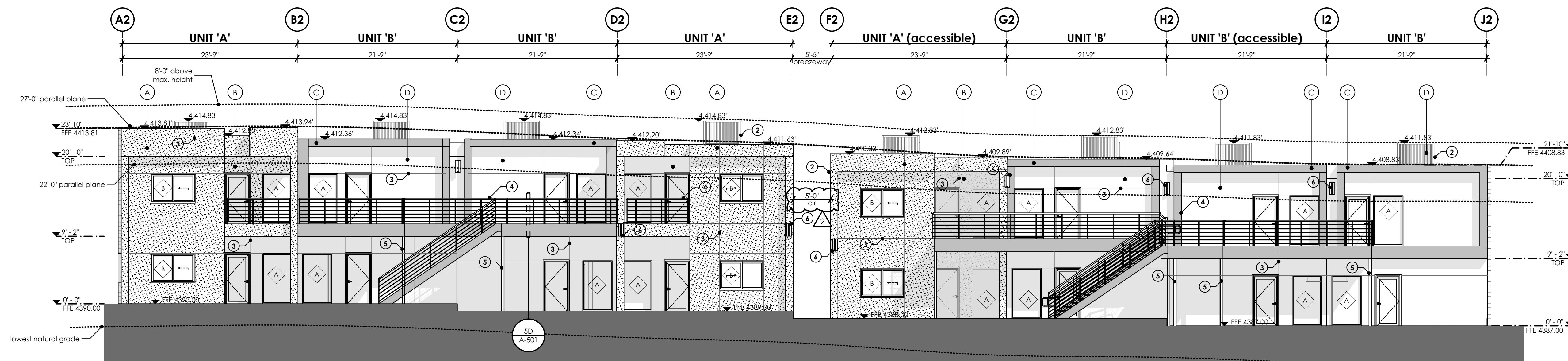
220 Sunset Drive | SEDONA, AZ 86336



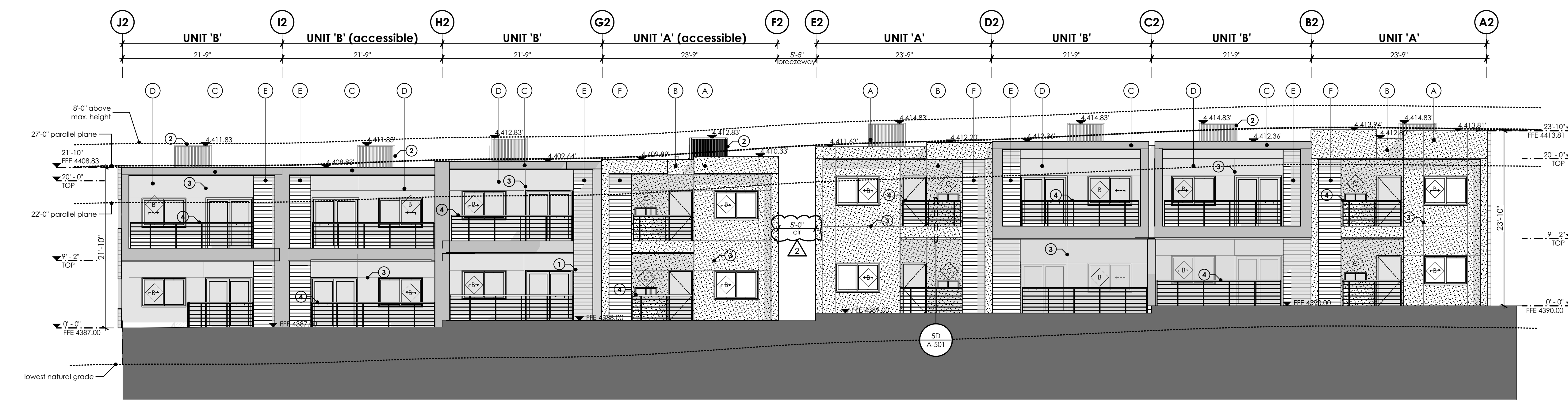
SUOLL architects
ARCHITECTS

PROJECT NUMBER: 21_005
DATE OF ISSUE: 06.01.23

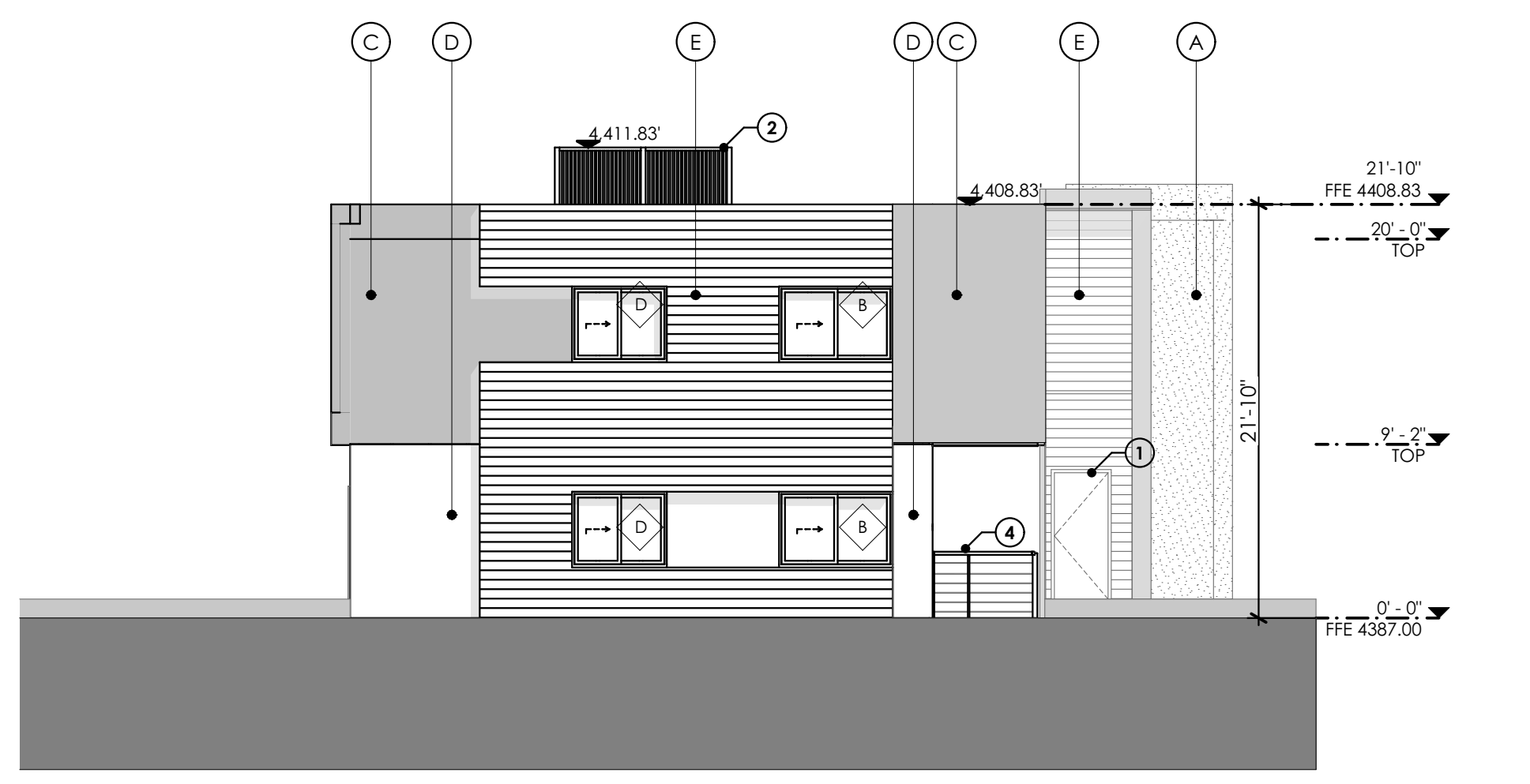
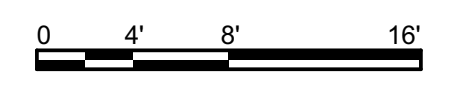
building elevations_BLDG 1



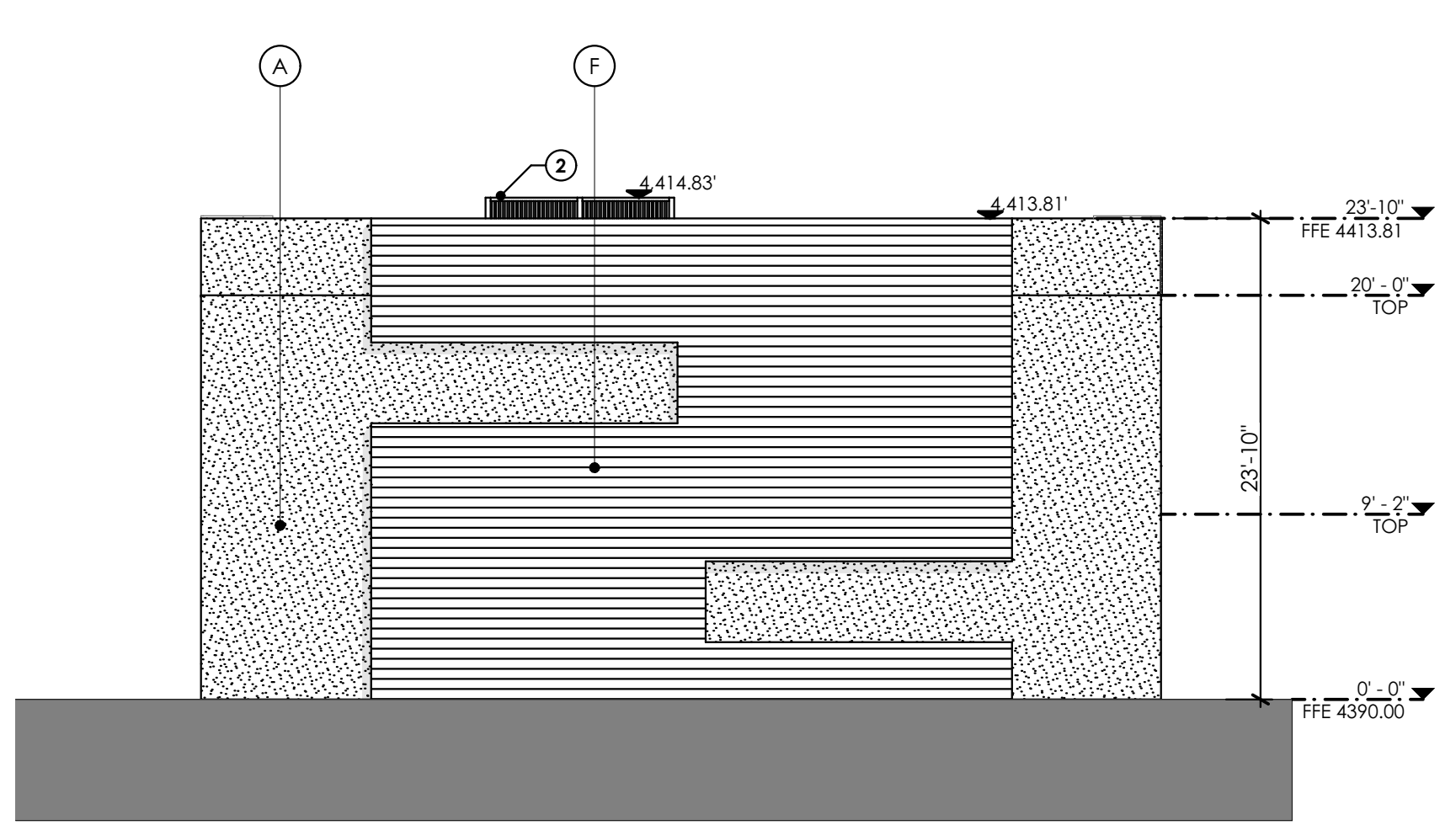
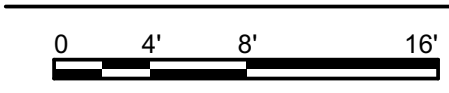
WEST ELEVATION_BLDG 2



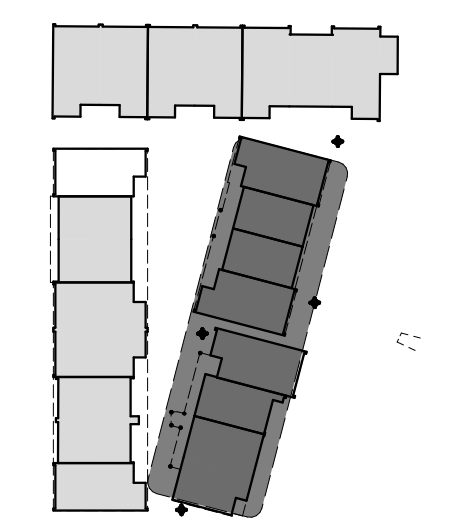
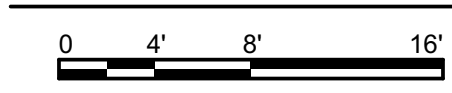
EAST ELEVATION_BLDG 2



SOUTH ELEVATION_BLDG 2



NORTH ELEVATION_BLDG 2



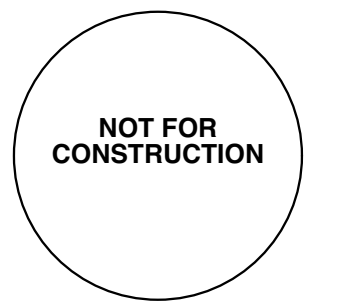
KEY PLAN

- SECTION / ELEVATION LEGEND**
- (A) MATERIAL: STUCCO PAINTED
COLOR: DUNN EDWARDS- DEA15 NORTHERN TERRITORY
 - (B) MATERIAL: STUCCO PAINTED
COLOR: DUNN EDWARDS- DE6118 SANDPIT
 - (C) MATERIAL: STUCCO PAINTED
COLOR: DUNN EDWARDS- DE6350 DARK ENGINE
 - (D) MATERIAL: STUCCO PAINTED
COLOR: DUNN EDWARDS- DE6327 RHINOCEROS
 - (E) MATERIAL: CERTAINTEE VINYL SIDING
MODEL: MONOGRAM, COLOR: SLATE
 - (F) MATERIAL: CERTAINTEE VINYL SIDING
MODEL: MONOGRAM, COLOR: ESPRESSO
 - 42" HIGH STEEL RAILING
PAINTED - DE6350 DARK ENGINE
 - MATERIAL: CMU 8 x 16, RUNNING BOND, SPLIT
FACE: COLOR: TBD

- ELEVATION GENERAL NOTES:**
- A. All exposed stem walls shall be of masonry type indicated for wall above floor line.
 - B. Sidewalks at building and structures shall match finish floor at doors and slope away.
 - C. Paint all exposed metal that is not specified to receive factory finish.
 - D. All exposed flashing shall be factory finished.
 - E. See plans and schedule for door and window types and sizes.
- ELEVATION KEYNOTES:**
1. Fire Riser Room location.
 2. Mechanical screen, painted.
 3. Stucco control joint, align per elevation.
 4. Steel railings and guardrails, painted DE6350 Dark Engine.
 5. Steel column painted, DE6350 Dark Engine. See structural drawings.
 6. Wall mounted light fixture, typ. See electrical drawings.
 7. Exterior signage.

SUNSET LOFTS, LLC
15010 N. 78th Way, Suite 109, Scottsdale, AZ 85250

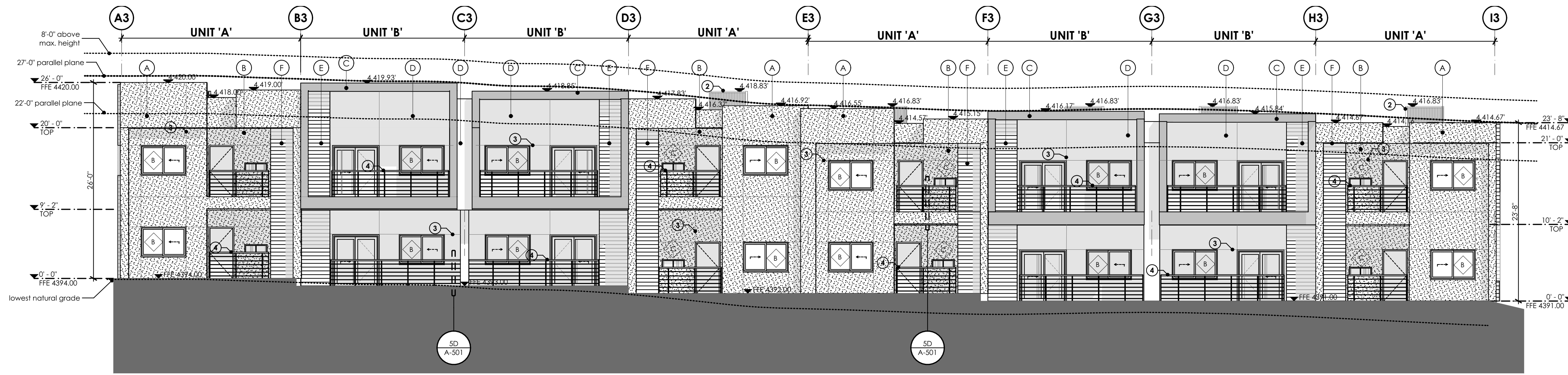
SEDONA SUNSET
220 Sunset Drive | SEDONA, AZ 86336



SUOLL architects
ARCHITECTS

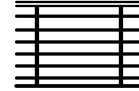
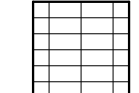
PROJECT NUMBER: 21_005
DATE OF ISSUE: 06.01.23

building elevations_BLDG 2

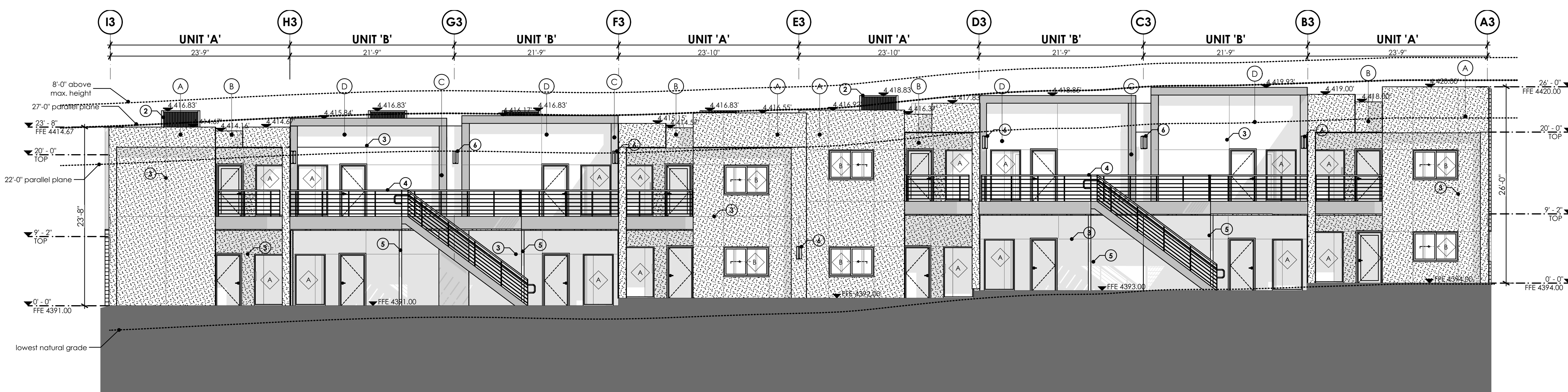


WEST ELEVATION_BLDG 3

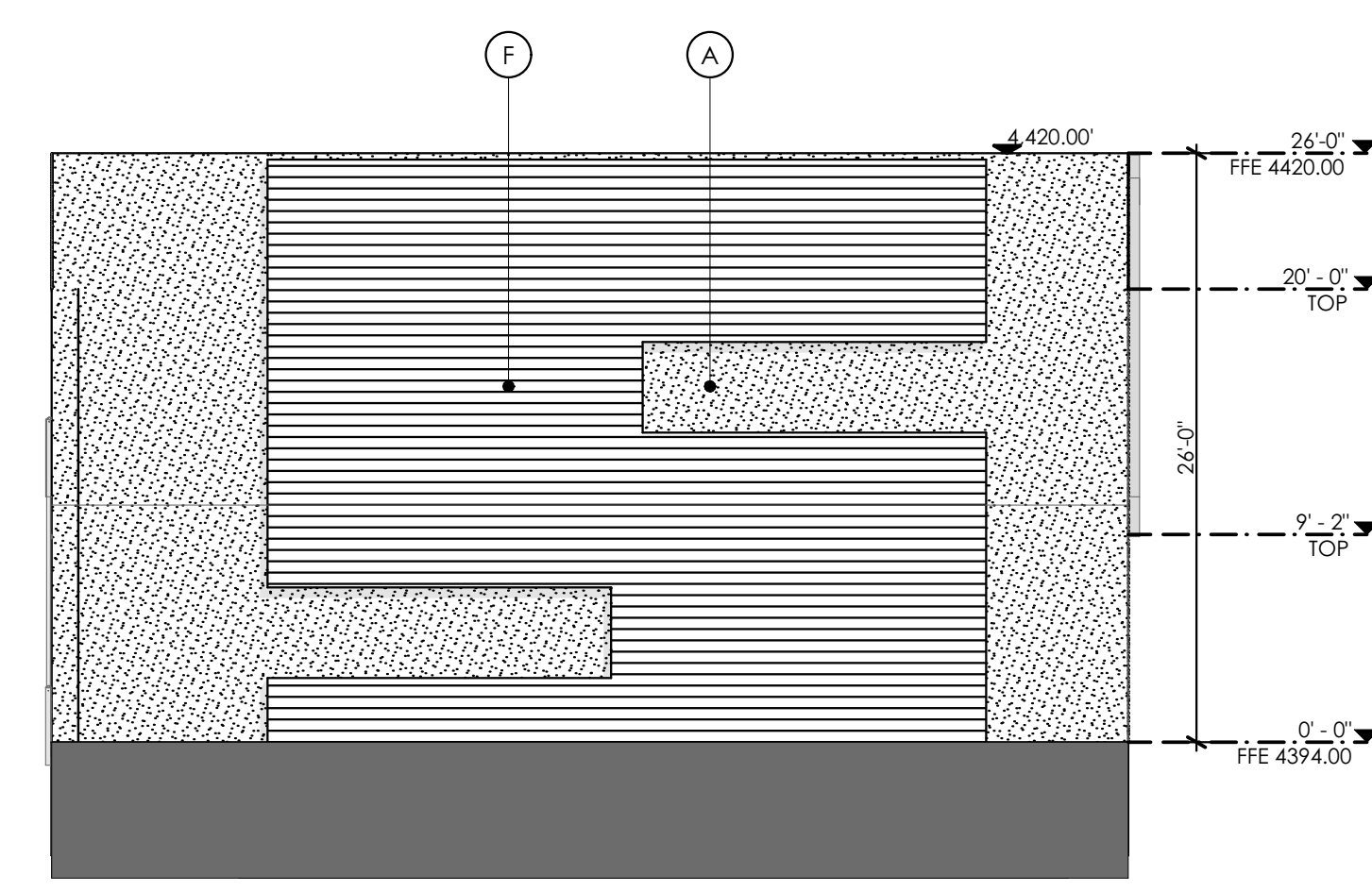
SECTION / ELEVATION LEGEND

(A)	MATERIAL: STUCCO PAINTED COLOR: DUNN EDWARDS- DEA15 NORTHERN TERRITORY
(B)	MATERIAL: STUCCO PAINTED COLOR: DUNN EDWARDS- DE6118 SANDPIT
(C)	MATERIAL: STUCCO PAINTED COLOR: DUNN EDWARDS- DE6350 DARK ENGINE
(D)	MATERIAL: STUCCO PAINTED COLOR: DUNN EDWARDS- DE6327 RHINOCEROS
(E)	MATERIAL: CERTAINTED VINYL SIDING MODEL: MONOGRAM, COLOR: SLATE
(F)	MATERIAL: CERTAINTED VINYL SIDING MODEL: MONOGRAM, COLOR: ESPRESSO
	42" HIGH STEEL RAILING PAINTED - DE6350 DARK ENGINE
	MATERIAL: CMU 8 x 16, RUNNING BOND, SPLIT FACE: COLOR: TBD

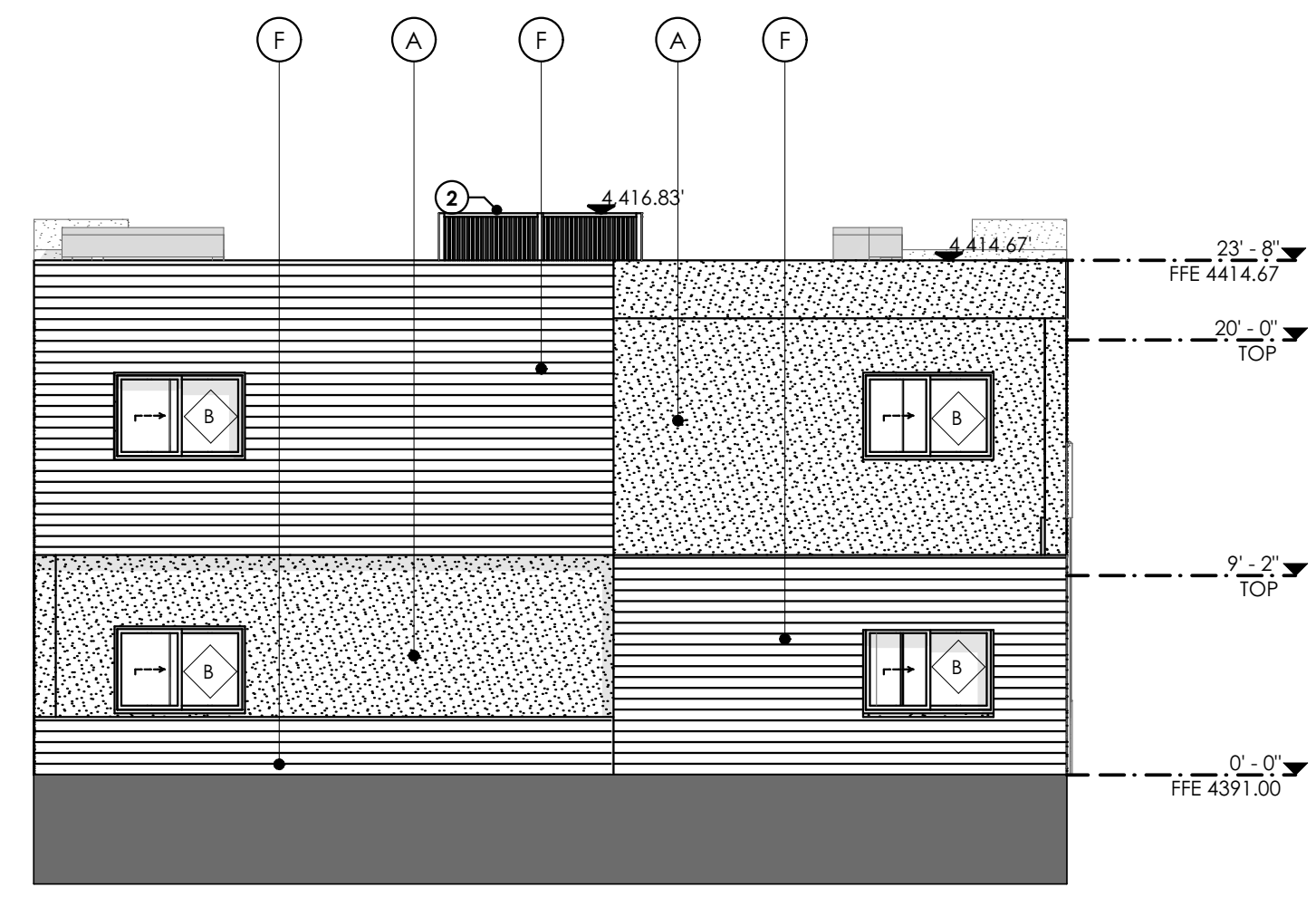
- ELEVATION GENERAL NOTES:**
- A. All exposed stem walls shall be of masonry type indicated for wall above floor line.
 - B. Sidewalks at building and structures shall match finish floor at doors and slope away.
 - C. Paint all exposed metal that is not specified to receive factory finish.
 - D. All exposed flashing shall be factory finished.
 - E. See plans and schedule for door and window types and sizes.
- ELEVATION KEYNOTES:**
1. Fire Riser Room location.
 2. Mechanical screen, painted.
 3. Stucco control joint, align per elevation.
 4. Steel railings and guardrails, painted DE6350 Dark Engine.
 5. Steel column painted, DE6350 Dark Engine. See structural drawings.
 6. Wall mounted light fixture, typ. See electrical drawings.
 7. Exterior signage.



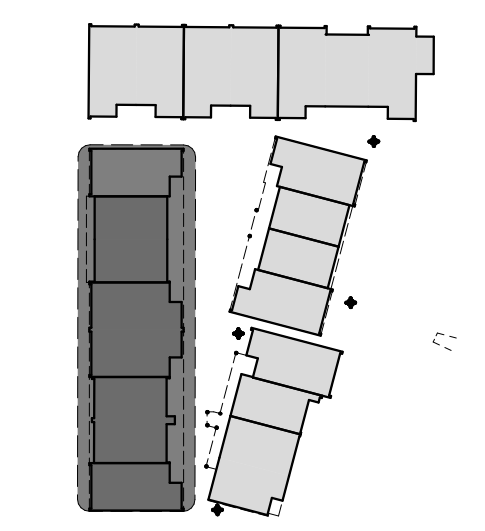
EAST ELEVATION_BLDG 3



NORTH ELEVATION_BLDG 3

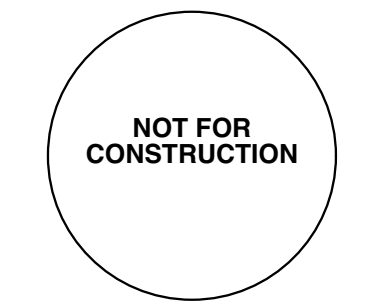


SOUTH ELEVATION_BLDG 3



KEY PLAN

SUNSET LOFTS, LLC
 15010 N. 78th Way, Suite 109, Scottsdale, AZ 85250
SEDONA SUNSET
 220 Sunset Drive | SEDONA, AZ 86336



SUOLL architects
ARCHITECTS & INTERIORS

PROJECT NUMBER: 21_005
 DATE OF ISSUE: 06.01.23

building elevations_BLDG 3