

FEBRUARY 28th DRAFT

# SEDONA COMMUNITY PLAN

DRAFT #3



City Council  
Work Session  
February 28, 2024 Draft



City of Sedona  
Community Development

[www.plansedona.com](http://www.plansedona.com)

## Table of Contents

<b>1. Introduction .....</b>	<b>5</b>
Community Profile .....	8
Key Issues .....	11
<b>2. Vision .....</b>	<b>17</b>
Core Values .....	18
Guiding Principles .....	19
<b>3. Community .....</b>	<b>24</b>
Community Partnerships .....	26
Parks and Public Places .....	27
Recreation and Events .....	29
Arts & Culture .....	30
Community Actions .....	31
<b>4. Land Use .....</b>	<b>33</b>
Future Land Use Map .....	36
Land Use Map Designations .....	38
Community Focus Areas .....	42
Land Use Policies .....	47
Land Use Actions .....	48

<b>5. Housing</b> .....	<b>50</b>
Housing Diversity .....	54
Housing Affordability .....	55
Housing Actions.....	56
<b>6. Circulation</b> .....	<b>58</b>
Multimodal Network.....	61
Walking and Biking .....	63
Transit .....	65
Streets.....	67
Uptown.....	71
Parking .....	73
Circulation Actions .....	75
<b>7. Environment &amp; Sustainability</b> .....	<b>77</b>
Open Space.....	79
Oak Creek.....	81
Recreation Management .....	82
Resiliency .....	83
Water Conservation .....	85
Wastewater .....	86
Energy Conservation .....	87
Innovative Building.....	88
Environment & Sustainability Actions.....	90

<b>8. Economy &amp; Tourism.....</b>	<b>92</b>
Economic Initiatives .....	94
Tourism & Visitor Management .....	96
Economy & Tourism Actions .....	98
<b>9. Implementation.....</b>	<b>100</b>
How the Plan is Implemented.....	101
Plan Administration .....	102
Plan Amendments.....	103
2013 Plan Implementation .....	104
Implementation Policies .....	105
Implementation Actions	106

# 1. INTRODUCTION

---

## **Chapter Contents:**

- » Overview
- » Community Profile
- » Key Issues
  1. Traffic
  2. Housing
  3. Tourism
  4. Recreation Management
  5. Short-term Vacation Rentals
  6. Regional Planning

# OVERVIEW

## WHAT IS THE COMMUNITY PLAN?

Sedona's Community Plan is the City's "general plan" required by the State of Arizona (A.R.S. §9-461.05). It is intended to convey the community's shared vision, values, and priorities to all residents, property owners, businesses, developers, and City staff. It is a decision-making guide for City Council and the Planning and Zoning Commission, and serves as a tool for the evaluation and design of future projects and programs, whether proposed by the City or private developers.

The Community Plan is not regulatory, and does not include the following:

- It is not a City capital improvements plan or maintenance and operations plan.
- It is not a City budget or commitment for expenditures of public funds.
- It is not a city code, land development code, zoning, or ordinance.

However, these are all expected to align with the Plan, and are key implementation tools for bringing the community's vision and goals to reality.

## HOW WAS THE PLAN DEVELOPED?

General plans must be updated every ten years and the previous plan was completed in 2013. Although updated every ten years, there is no end date but a recognition of changing circumstances. This Plan is built on the 2013 Plan, and is based on input from residents, stakeholders, partner agencies and organizations, and City staff. The input was gathered during a two-year community engagement process that had two primary goals: Listening and Learning. City staff listened to resident's concerns, answered questions, and relayed the Plan's purpose, authority, and scope. The outcome of this process is a plan that is intended to reflect the community's values, and address the priority issues and priorities over the next ten years.

### Did You Know?

- ▶ The City of Sedona was incorporated in 1988.
- ▶ The City straddles Coconino and Yavapai counties.
- ▶ The total land area within the City limits is 11,755 acres.
  - ▶ 49% of land within City limits is National Forest.
  - ▶ 82% of the land in the City is developed (excluding National Forest).
- ▶ There is no City property tax.
  - ▶ The retail sales tax rate in 2023 was 9.85% in Yavapai County and 10.40% in Coconino County, both of which include a 3.5% City retail tax.

## COMPONENTS OF THE PLAN

### Vision and Values

The vision statement describes how the community sees itself in the future. The core values represent our shared ideals, and guiding principles represent our expectations. These are all intended to guide decisions, ultimately leading towards a future that is representative of the community's values and principles.

### Goals

Goal statements are the desired outcomes that lead towards realizing the community vision. Goals are on the first page of each chapter.

### Policies

Policy statements are intended to guide future decision making in order to accomplish the Plan's vision and goals. Policies include a brief explanation, and are indicated by the following format.

► **Policy 1.1** Each policy is labeled "chapter number . policy number"

### Actions

Action items are specific tasks to be accomplished. They may address multiple policies, and can include projects, programs, or plans. Actions are listed at the end of each chapter.

### Future Land Use Map

Located in the Land Use chapter, the Future Land Use Map designates preferred future land uses for properties. It is an important tool in implementing the Plan and guiding future development and redevelopment of the City.

### "City" vs "city"

In this document, "City" refers to the City of Sedona governmental agency. A lower-case "city" is referring to geographical or general issues.

### What is Planning?

*"The goal of planning is to maximize the health, safety, and economic well-being of residents in ways that reflect the unique needs, desires, and culture of those who live and work within the community".*

*"Planners take a broad viewpoint and look at how the pieces of a community — buildings, roads, and parks — fit together like pieces of a puzzle... imagine what can and should happen to a community: how it should grow and change, and what it should offer residents 10, 15, or even 20 years into the future".*

- American Planning Association [planning.org](http://planning.org)

# COMMUNITY PROFILE

The City of Sedona’s 2022 year-round population was 9,844 (City of Sedona estimate based on the 2020 U.S. Census). Sedona’s population has been declining since 2000 (Figure 1.1). In comparison, the surrounding Verde Valley region saw an 18.5% population growth during the same period (Figure 1.2). Meanwhile, the median age of Sedona residents has been steadily increasing since 2000, reaching 58.5 in 2021, while Arizona’s median age is 38.6.

## SEDONA POPULATION GROWTH

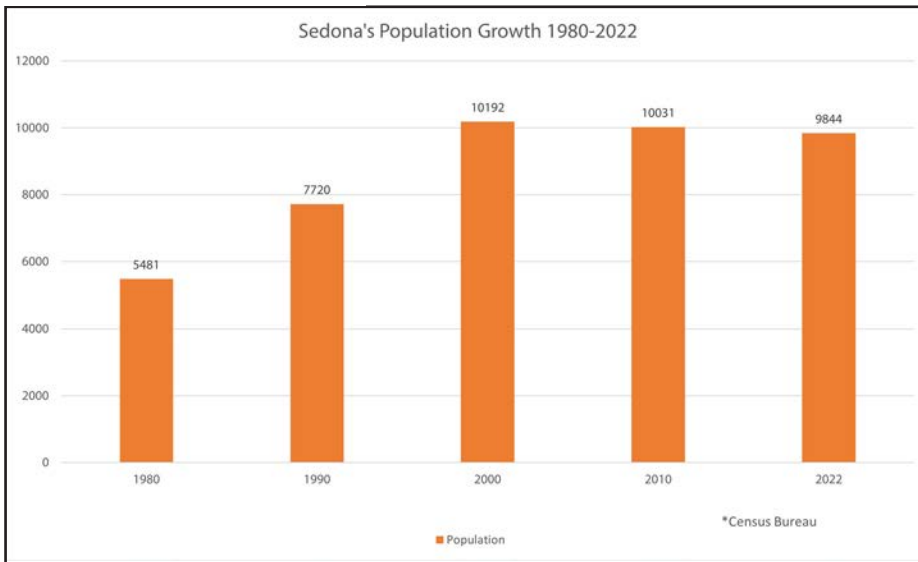


Figure 1.1. Sedona population growth from 1980-2022. Source: U.S. Census Bureau

## VERDE VALLEY POPULATION GROWTH

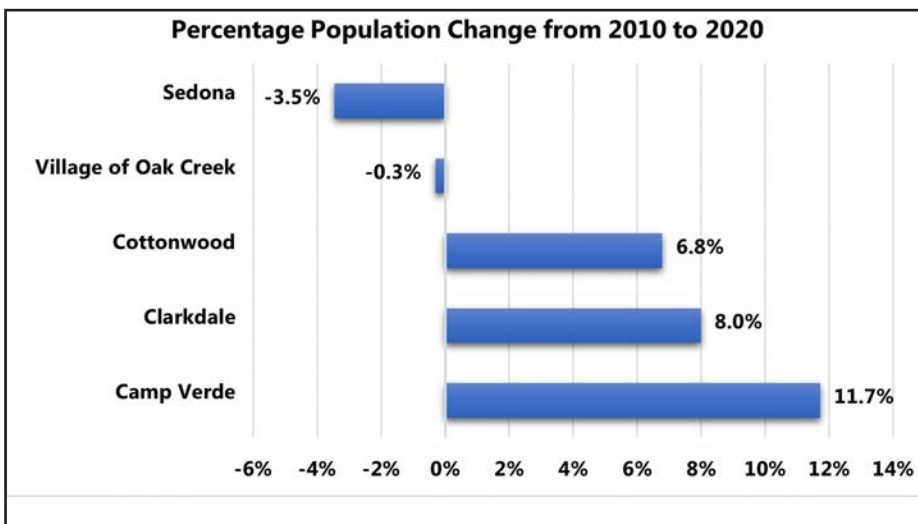


Figure 1.2. Verde Valley regional growth from 2010-2020. Source: U.S. Census Bureau



### SEDONA'S YEAR-ROUND RESIDENTS AND AGE OF RESIDENTS OVER TIME

Sedona's year-round residential occupancy declined since 2000, from 86.7% to 74.9% in 2020. That is 4,997 out of 6,671 total housing units in 2020.

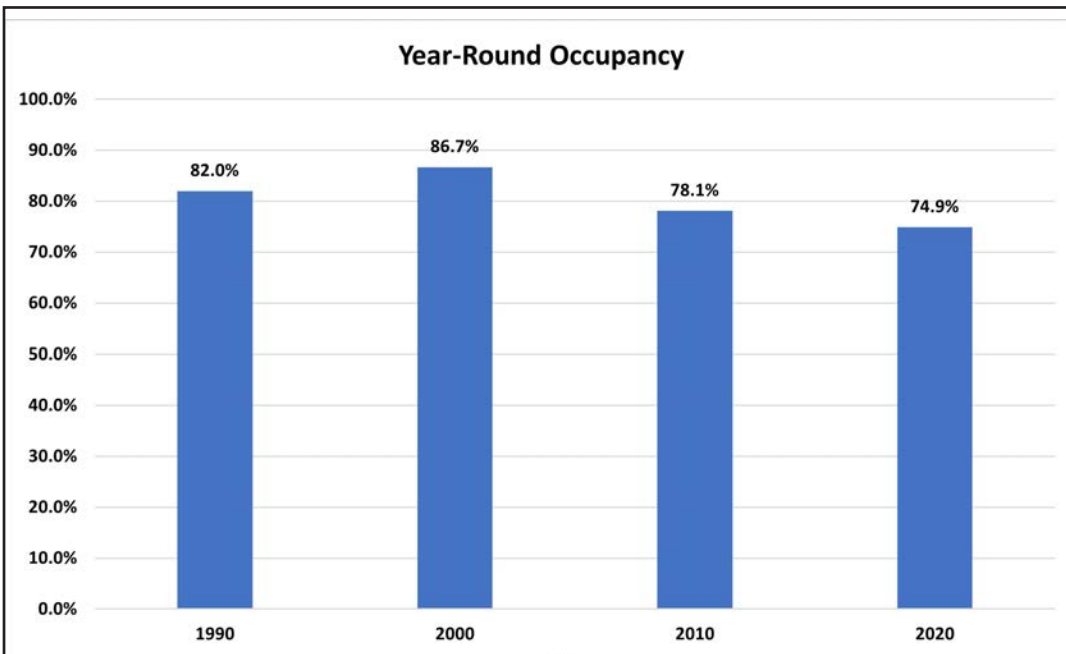


Figure 1.3 . Year-round occupancy from 1990-2020. Source: U.S. Census Bureau

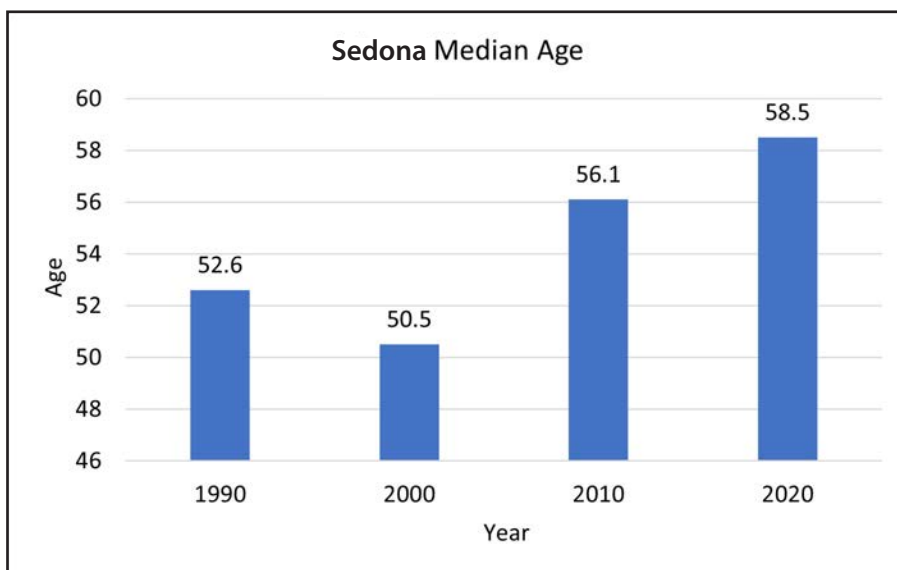


Figure 1.4. Median Age of Residents 1990-2020. Source: U.S. Census Bureau

**LAND DEVELOPMENT**

Despite the concerns voiced by many residents about growth, development has been relatively modest. There is also a significant limit to Sedona’s growth - the amount of land and public land boundaries. The city was 82% built-out in 2022. Many of the vacant lots on the map below are undeveloped for a reason, as many have challenges and high costs associated with building (steep cliffs, floodplains, difficult to access, etc.).

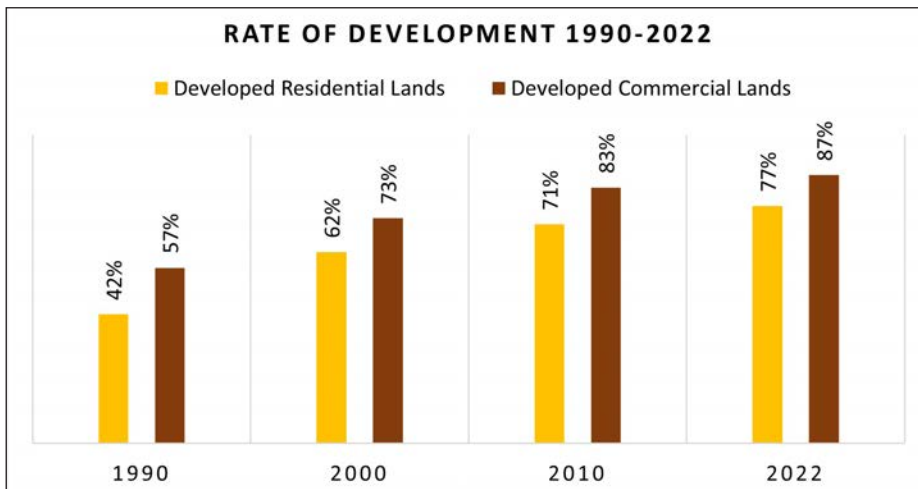


Figure 1.5. Rate of development acreage in Sedona from 1990-2022. Source: U.S. Census Bureau

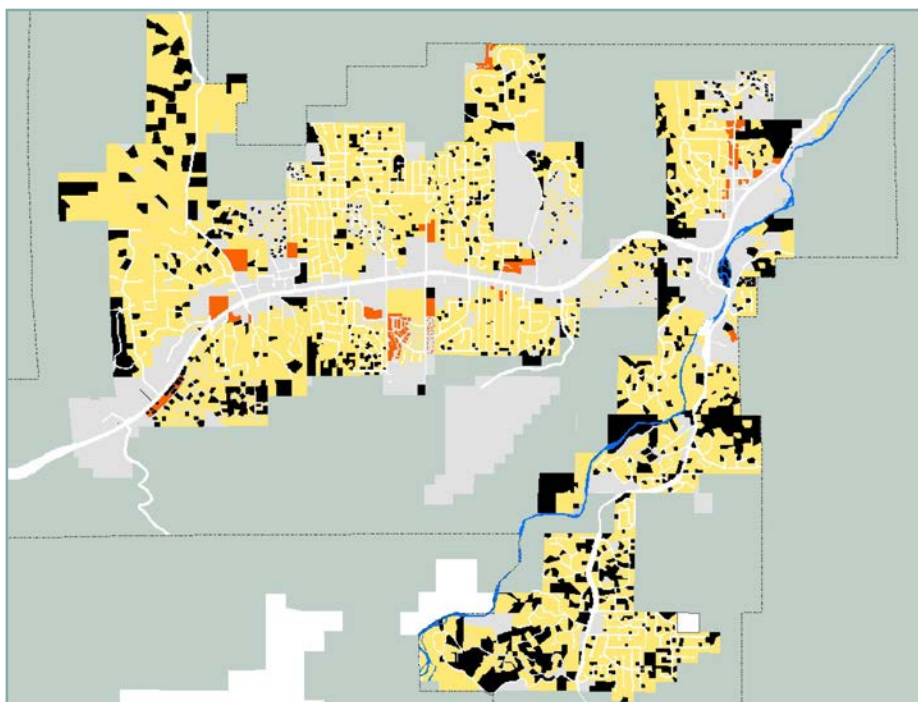


Figure 1.6.  
 - Vacant residential shown in black,  
 - built multi-family residential in orange, and  
 - built single-family residential in yellow  
 Source: City of Sedona GIS

# KEY ISSUES

This is a summary of the key issues of concern raised by the community during the Plan's public outreach in 2022 and 2023. At the beginning of each element of the Plan is a list of key issues relevant to that chapter. The following is an overview of what the public considered key issues for the next 10 years. Most of these are cross-cutting topics that are intertwined, and influence many aspects of the community.

One major influence that must be recognized is the COVID-19 Pandemic of 2020. It influenced the economy, tourism industry, housing, and a sense of community.

Sedona became a magnet for people seeking outdoor recreation during the pandemic. There was an increase in campers and RVs, short-term vacation rentals, crowded trailheads, and impacts on the environment. There was also an influx of people moving to Sedona, either permanently or temporary, enabled by opportunities for telecommuting and remote work.

## KEY ISSUE 1 - TRAFFIC

Traffic as a key issue of concern to Sedona residents has been a constant since incorporation. It was a high priority in the 2013 Community Plan which has resulted in numerous projects from several plans: Transportation Master Plan, Transit Implementation Plan, GO! Sedona Pathways Plan. The City's capital improvement plan for transportation projects is known as Sedona in Motion.


## KEY ISSUE 2 - HOUSING

Similar to traffic, housing has been an issue for years. It has become a more critical issue as the amount of buildable land in Sedona decreases, the cost of land increases, and the cost of building continues to go up. Other Verde Valley cities like Cottonwood, Clarkdale, and Camp Verde are experiencing many of the same issues, so commuting into Sedona is not necessarily the answer for people working in Sedona. Sedona has always been a community of single-family homes with very few apartments, condos, or townhomes. Starting out with such a deficit of these types of housing makes it far more challenging to provide the housing needed now and in the future.

### KEY ISSUE 3 - TOURISM

Traditionally, physical visitor centers have been the go-to place for tourists to get information about where to go and what to see. Today most people turn to social media, such as Instagram, to find out where to go, the “must-see” selfie spots, top ten sites and scenic hotspots. This is essentially unintentional and unmanaged marketing and advertising; it may not include helpful or educational information (parking availability, responsible recreation practices).

Unfortunately, these scenic hotspots cannot handle the influx of traffic, parking, waste, litter, and foot/bike traffic. Adding to the impacts, quite a few sites in Sedona are sensitive areas (including cultural resources like petroglyphs) that do not have designated trails, signs, and, in some cases, parking. As such, social media’s influence may lead to environmental damage, graffiti, litter, and an increase in search and rescue for lost or injured hikers.

 See [Economy and Tourism chapter](#) and [Environment and Sustainability chapter](#)

#### What is “overtourism”?

The United Nations World Tourism Organization has defined overtourism as “the impact of tourism on a destination, or parts thereof, that excessively influences perceived quality of life of citizens and/or quality of visitors experiences in a negative way.”

## KEY ISSUE 4 - RECREATION MANAGEMENT

Outdoor recreation is the number one activity for visitors to Sedona, and can include short walks for the scenic views, longer hikes, mountain biking, off-highway vehicles (OHVs) or horseback riding. It is also one reason many people live in Sedona, for the proximity to the stunning landscape and world-class trail system.

The experience for both residents and visitors has been affected by the increasing number of people on the trails and at scenic viewpoints. The volume of people and cars is also overwhelming trailheads and parking areas, especially during peak days and busy seasons. Unfortunately, the natural environment is being adversely affected by Sedona's popularity. It may be unintentional when there are too many visitors for the space, whether it is a trail, scenic spot, or trailhead. The impacts can also be attributed to a lack of awareness or knowledge of outdoor ethics. Then there are the impacts resulting from those that have a lack of respect for other people, plants, and animals. Efforts are underway to better address these issues, however far more can be done to mitigate further impacts to the natural environment, neighborhoods, and other trail users.

### Off-Highway Vehicles (OHVs)

Off-highway vehicles (OHVs) is a key issue for many residents, as OHV rental businesses have grown and the popularity of individually owned OHVs has been rising. Resident concerns with OHVs includes the noise and traffic as they pass through neighborhoods to access the National Forest. Once on the Forest, driving off roads and over previously undisturbed areas, as well as dust, noise and traffic are of grave concern to everyone. The greatest challenge to managing OHVs is that in Arizona and on the National Forest, it is legal to drive them on streets and Forest roads. Establishing more restrictive regulations will need to happen at the state and federal level. Meanwhile, collaborative stakeholder working groups are working towards improved management to mitigate the impact of OHVs on City streets and the National Forest.

**i** See [Environment & Sustainability chapter](#)

### What are Outdoor Ethics?

*"Outdoor ethics is based on the idea that we are all stewards of the environment and should provide careful and responsible management of our great outdoors so that this generation and those to come can enjoy it". - U.S. Forest Service*

### Recreate Responsibly

"In May of 2020, just a few months into the COVID-19 pandemic and weeks after most of the United States and world were under "shelter-in-place" mandates, people were craving outdoor experiences. Many public lands and natural spaces' facilities were closed, but remained accessible and people were heading outside during an unprecedented and unpredictable time. Representatives...convened outdoor industry, conservation, and land management experts to address concerns and opportunities that accompanied increased visitation to natural spaces and the Recreate Responsibly Coalition and Campaign was born".

- recreateresponsibly.org

## KEY ISSUE 5 - SHORT-TERM RENTALS (STR)

The short-term rental of single-family houses became legal in Sedona in 2017 after the State of Arizona passed a law prohibiting cities from banning STRs (A.R.S. §9-500.39, often referred to as Senate Bill 1350). Prior to this (1995-2016), the City of Sedona did not allow rentals of single-family homes for less than 30 days. By 2023 there were 1,140 identified STRs in the city, which makes up 16.8% of Sedona's housing.

Arizona state law preempts local control, so the City cannot simply prohibit STRs as it has done in the past. What the City can legally do:

- Protect the public's health and safety
- Adopt and enforce nuisance ordinances
- Require the owner to provide an emergency contact
- Limit/prohibit STR use for sex offenders or adult-oriented businesses
- Prohibit STRs from having events that would require a permit at a typical single-family residential property including weddings, receptions, parties, retreats, workshops, and large religious gatherings

The fact that 16.8% of Sedona's housing stock is now STR (as of October 2023) has resulted in a variety of community issues, including the following:

### Real Estate Impacts

- Less long-term rental properties for residents
- Residents moving outside of Sedona
- Removal of existing long-term rental residents to make way for STRs
- Increased cost of housing
- Investors out-competing "home" buyers
- Houses and guest houses being built with the intention of being short-term rentals (example: houses with 5 rooms/5 bathrooms)

### Neighborhood Impacts

- Loss of a sense of community
- Loss of neighborhood feel

### Advantages

- Homeowners have an opportunity to make money
- Increased property values
- Economic ripple effect - jobs for property managers, home cleaning services, home renovation and repair services

## CITY RESPONSE TO SHORT-TERM RENTALS

- ▶ **City Short-Term Rental Program:** In 2022 cities were given the ability to regulate (with limits) and require permits. In 2023 there were 1,094 permitted properties with 95% compliance.
- ▶ New staff position "**Short-term Rental Specialist**"
- ▶ Short-term Rental **Hotline 24/7**
- ▶ Short-term Rental **Online Incident Report Form**
- ▶ **Rent Local Program:** City pays short-term rental owners within City limits to rent to a local worker for at least one year
- ▶ **Deed Restriction Program:** Homeowner may place a voluntary deed restriction on their property preventing its use as a Short-Term Rental (STR)
- ▶ **Legislative Changes:** Active in proposing bills to the legislature to return some local control to municipalities
- ▶ Publish and maintain a list of all permitted STRs with their **emergency contact information** on the City website
- ▶ Apply **enforcement** action to all STRs with code violations to ensure issues are addressed



FEBRUARY 28th DRAFT

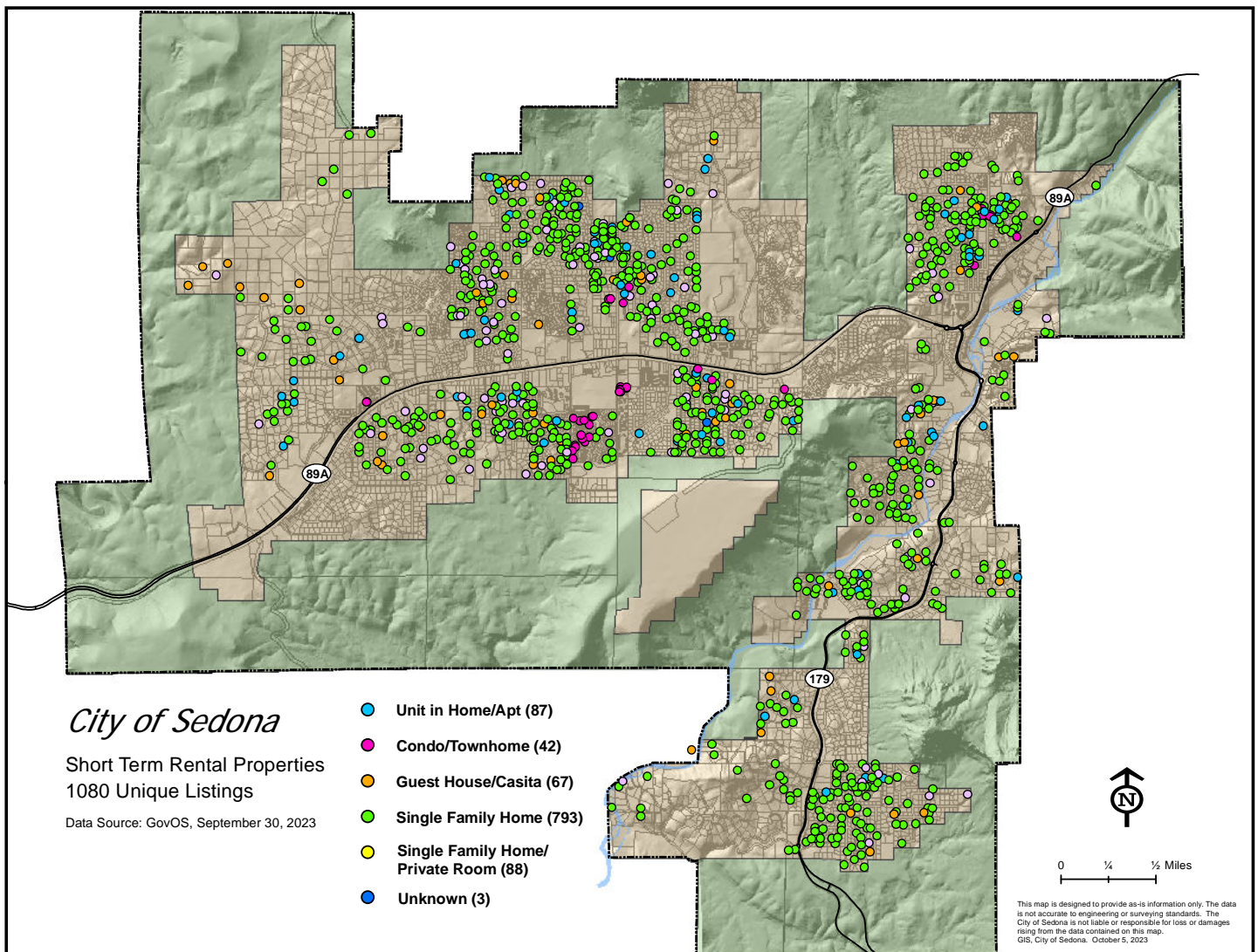


Figure 1.7. Map of Short Term Rental Properties, Source: GOVOS 9/30/23

### Requirements of the City's Short-Term Rental Permit Program

- \$200 annual permit
- Emergency contact who can respond to complaints quickly
- Written notice to neighbors and post notice on the property
- Property/liability insurance
- Background checks on all guests booking (done by STR operator)

### What can be used as a short-term rental?

- Single-family houses
- 1 to 4 unit houses (duplexes, etc.)
- Apartments with less than 5 units
- Condominiums, townhouses, cooperatives
- Individual rooms within any of above
- Guest houses, casitas, mother-in-law quarters

### What cannot be used as a short-term rental?

- Structures not approved as a dwelling unit (garage, shed, etc.)
- Unsafe structures that do not meet Building Codes
- Apartments with 5 or more units
- Recreational Vehicles (RV's)
- Temporary structures (tents, yurts)

**KEY ISSUE 6 - REGIONAL PLANNING**

Although Sedona's year-round population has been in decline, the surrounding Verde Valley region has experienced significant growth. In the late 1990s and early 2000's, jurisdictions in the Verde Valley realized that the region's growth issues are shared by all and cannot be addressed if each community operates in a vacuum. There are a variety of shared regional issues such as housing, healthcare, and economic development that call for a long-term partnership approach.



## 2. VISION

---

### Chapter Contents:

- » Core Values
- » Guiding Principles
  - Protect and honor our environment and heritage
  - Strengthen community livability and connections
  - Support regional economic diversity, local businesses, and responsible tourism

### VISION STATEMENT FOR 2033

---

*Sedona is a diverse, livable, and vibrant community that nurtures connections between people and place, encourages healthy and active lifestyles, and places priority on the protection of the environment.*

# CORE VALUES

Core values are the community's shared ideals that inform our guiding principles, thus influencing all aspects of the Plan's recommendations. These core values are taken from all of the public input in 2022 and 2023, and align with previous Community Plan values.

Many things go into making a community, and together they all must be balanced. To help create that balance, our vision, core values, and guiding principles should be applied to all of our actions as we move forward into the future.

## LIVABLE & VIBRANT COMMUNITY

- A **strong sense of community** is our expectation of living in a small town. We value a sense of belonging and knowing that we matter to each other. Living in and caring for Sedona's peace, beauty, and nature is a bond that residents share.
- It is important to us that Sedona is a welcoming place for families, with sufficient housing, a thriving **economy**, and access to services necessary for a healthy and sustainable community.
- We utilize forward thinking **land use** policies and guidance to ensure the long term sustainability and protection of Sedona's resources.
- We appreciate the benefits brought by **sustainable tourism** and encourage visitors to respect Sedona's natural environment, heritage, and our community.
- Visual and performing **arts** are essential to community character and a sense of community, as well as the local economy and tourist appeal.
- We encourage the responsible use and sustainable management of our City **Parks and open space**.

## ENVIRONMENTAL PROTECTION

- We are privileged to live in a place of outstanding and unique beauty. We recognize the need to be constantly vigilant over the **preservation of the natural landscape and wildlife**. This includes caring for the land when it is threatened by overuse, development, or natural hazards.
- Now more than ever we also see the need to educate visitors about best **recreation** practices and continue to **balance recreational tourism** with resource protection and management.
- As a community, we have a great responsibility to demonstrate and support the **responsible visitation and management** of one of the most beautiful places on earth.
- All of our community actions and decisions must be weighed against the preservation of the beauty of Sedona.
- With that in mind we must, during the next decade, continue to maintain a community that is responsibly integrated into this beautiful environment.

# GUIDING PRINCIPLES

- *Honor and protect our environment and heritage.*
- *Strengthen community livability and connections.*
- *Support regional economic diversity, local businesses, and responsible tourism.*

Our community's Guiding Principles are born from our Core Values; they are intended to set the standard for our community interactions with each other, our surroundings and with those who are guests of our community.

These guiding principles are intended to provide direction in all aspects of the Community Plan – goals, policies, and action items. They should also apply to the design of any city capital improvement projects as well as private development projects.

The Plan's recommendations will reflect and strengthen these core values, leading us toward our shared vision of Sedona. Each of the guiding principles are described on the following pages, featuring quotes received from the public during our community outreach efforts.

*"As a lifelong resident of Sedona who is married to a lifelong resident and now raising two children (all of our parents still live here as well), I want to see Sedona retain the feel of community that has kept our family here for nearly 40 years. We want to see the families who move here stay because Sedona is so great instead of moving away after a few years because of limited economic and housing opportunities."*

*-Public Comment*

## GUIDING PRINCIPLE 1

### *Honor and protect our environment and heritage*

- ▶ *We respect and protect the natural environment.*
- ▶ *We ensure that the built environment is in harmony with the natural environment.*
- ▶ *We incorporate sustainability and resiliency practices into all of our actions.*

### What this means in 2033 ...

#### Environment

- Protection of the environment is a high priority in all decision-making.
- Development is designed to limit impacts on the natural landscape, especially riparian habitat, drainages, steep slopes and viewsheds.
  - » Development projects such as new houses, businesses, parks, and streets are landscaped with low water use, native plants that blend into the natural landscape.
  - » Buildings are designed to maximize energy efficiency technologies and minimize their impact on the land.
- Water is a precious resource that is conserved to ensure future availability, and managed or reused to sustain habitat and replenish groundwater.
- Oak Creek is a green corridor with clean flowing water supporting an ecosystem of endemic plants, fish, birds, and other wildlife.
- Natural areas are protected from the impacts of vehicles, people, noise, and pollution.
- There are educational and directional signs and maps, and physical barriers to protect the land, as well as monitoring and restoration of public lands.

#### Sustainability and Resiliency

- Sedona is prepared for natural disasters and climate change impacts.
- Communications are in English and Spanish, and readily available to residents, businesses, and visitors.
- There is access to clean energy and Sedona has reduced its dependence on fossil-fuels.
- There is increased awareness of the environmental impacts of consumption.
- Historic and prehistoric sites are recognized, preserved and celebrated.

*“Sedona is about the rocks ... how to view them, enjoy them, walk, bike and run on them, preserve their adjoining forests and streams and do whatever we possibly can to protect them for future visitors and residents.”*

*- Public Comment*

## GUIDING PRINCIPLE 2

### *Strengthen community livability and connections*

- ▶ *We come together to share experiences, help others, improve our community, enjoy the arts, and celebrate our heritage.*
- ▶ *We travel safely and efficiently throughout Sedona, with options to drive, walk, bike or ride the bus.*
- ▶ *Our community of residents, employees, and visitors enjoy these convenient alternatives to driving.*
- ▶ *Our community has a variety of housing options for all ages and income levels, and rental housing is stable and secure.*

### What this means in 2033...

#### Sense of Community

- Sedona is a friendly, welcoming, and neighborly community, and will collaborate with and support each other.
- Parks, plazas, cafes, festivals, and markets are dynamic places where people gather and socialize.
- There is a diversity of people interacting with each other - whether by age or background, resident, or visitor.
- Sedona is a community of active and productive volunteers.
- Sedona has a variety of educational opportunities for learning and interaction.
- Local culture is celebrated through the arts and events.
- Sedona has a unique and distinctive image and identity.

#### Housing Diversity

- There is a significant increase in housing options, of all types, sizes, and cost.
- More diverse housing options attract more young people, families, and professionals to become a vital part of our community life.
- Diverse housing options exist for all types of residents (e.g., business owners, retirees, families, essential workers).
- New housing development complements existing structures and city character.
- Residents feel secure in the longevity of their living situation and feel confident advocating for themselves and their neighbors.

#### Mobility

- There are a variety of environmentally responsible transportation choices.
- There are transit services with convenient and accessible parking areas throughout the City.
- There are more sidewalks, paths and trails that lead to activity centers, parks, trailheads, and popular destinations.
- Walking and biking is safe, convenient, appealing, and comfortable for residents and tourists to make the choice to drive less.
- There are protected bicycle paths and electric charging stations to facilitate safe, secure, and convenient travel by bicycle.
- There are fewer cars on the road; traffic moves well, with the exception of peak holidays.

*“Support young families who want to live here, drive an economy that encourages jobs and affordable housing, enhance healthcare for younger families.”*

*- Public Comment*

## GUIDING PRINCIPLE 3

### *Support regional economic diversity, local businesses, and responsible tourism*

- ▶ *Our community proactively manages tourism.*
- ▶ *We share with visitors how to respect and care for our red rock landscape and neighborhoods.*
- ▶ *We participate in a regional economy and we support our local businesses that practice respect for the environment, and enhance our community's quality of life.*

### What this means in 2033...

#### **Economy**

- Collaborative partnerships support a diverse regional economy to ensure the availability of essential resources, including quality healthcare.
- Economic policy supports emerging business and employment opportunities.
- Businesses are innovative, creative, and conscientious regarding goods and services, marketing, best practices, and teach everyone to respect our community and environment.
- Sedona has a thriving arts community.

#### **Tourism**

- Community members enjoy a high quality of life and the benefits brought by tourism.
- Visitors learn and practice respect for our community and our fragile and beautiful natural environment.
- Tourism is a year-round industry with the support of the local community and visitors, which allows local businesses to prosper year-round.
- Sedona visitors are encouraged to stay for extended visits and support quality business practices.



# 3. COMMUNITY

---

## Chapter Contents:

- » Overview
  - Community Key Issues
  - Synopsis 2013-2023
- » Recommendations
  - Community Partnerships
  - Parks and Public Places
  - Recreation and Events
  - Arts & Culture
- » Community Actions

## COMMUNITY GOAL

---

*Build a strong sense of community and culture.*



# OVERVIEW

## COMMUNITY KEY ISSUES

- The loss in population, including families with children
- The increasing number of vacation rentals in neighborhoods
  - » Less people/families living in homes
  - » Impacts the city's sense of community
- Community concerns that there are:
  - » Not enough opportunities for social interaction
  - » Not enough activities for youth or support for families
  - » Diverse but disconnected communities and neighborhoods
  - » No central gathering place(s)
  - » The impression of many residents that Sedona is being overwhelmed by the amount of tourists and the impacts of tourism

## SYNOPSIS 2013 - 2023

- City Parks and Recreation
  - » Ranger Station Park Master Plan and construction (to be complete in 2024)
  - » Posse Grounds City Park
    - Barbara Antonsen Memorial Pavilion
    - Bike Skills Park
    - Dog park renovations
    - Parking lot for the trailhead shuttle
    - Connector, shared use path from parking lot
    - Disc golf course and rebuilt bocce court
    - The Hub building becomes City Parks and Recreation facility
  - » Sunset Park
    - Shared-use path connector
    - Shade structures and new playground equipment
- Development of the Citizen Engagement Program
- Established an Arts and Culture Program

# COMMUNITY PARTNERSHIPS

## ► Policy 3.1 - Facilitate connections between residents, local organizations, and schools to build a stronger sense of community.

Residents have expressed concern about Sedona losing its sense of community, suggesting that there is a role for the City to build community. This can happen by simply providing an online directory connecting residents to local organizations or by providing funds for organizations (see below). As the list below shows, there are a lot of community organizations in Sedona and the Verde Valley, and some have struggled since the Pandemic to find volunteers. Collaboration with each other and with the City can help local groups to expand their membership, share resources, and be more effective in fulfilling their missions.

## ► Policy 3.2 - Continue the small grants program, adding to the criteria the importance of building a sense of community and partnerships.

The City of Sedona provides support to local non-profit organizations through a small grants program. To be eligible, the non-profit organization's programs, activities, or events should address the following criteria:

- Advance the Sedona Community Plan recommendations
- Advance the goals of equity and inclusion
- Promote public health, safety, and general welfare
- Directly benefit Sedona residents, their well-being and prosperity

**i** Sedona Small Grants Program:  
[www.sedonaaz.gov/your-government/departments/city-manager/grants](http://www.sedonaaz.gov/your-government/departments/city-manager/grants)

## Building a Sense of Community Sedona Community Organizations

The following represents the types of groups in Sedona; this is not a comprehensive list of all organizations.

### Community/Social

- Adult Community Center
- Community Food Bank
- Elks Lodge
- Humane Society of Sedona
- Red Rocks Rotary
- Northern Arizona Interfaith Council
- Sedona 30
- Sedona Public Library
- Sedona Women
- Sedona XYZ

### Environment/Recreation

- Gardens for Humanity
- The Hummingbird Society
- The Westerners
- Friends of the Verde River
- Keep Sedona Beautiful
- Oak Creek Watershed Council
- Red Rock Trail Fund
- Friends of the Forest
- Sedona Recycles
- Verde Valley Cyclists Coalition

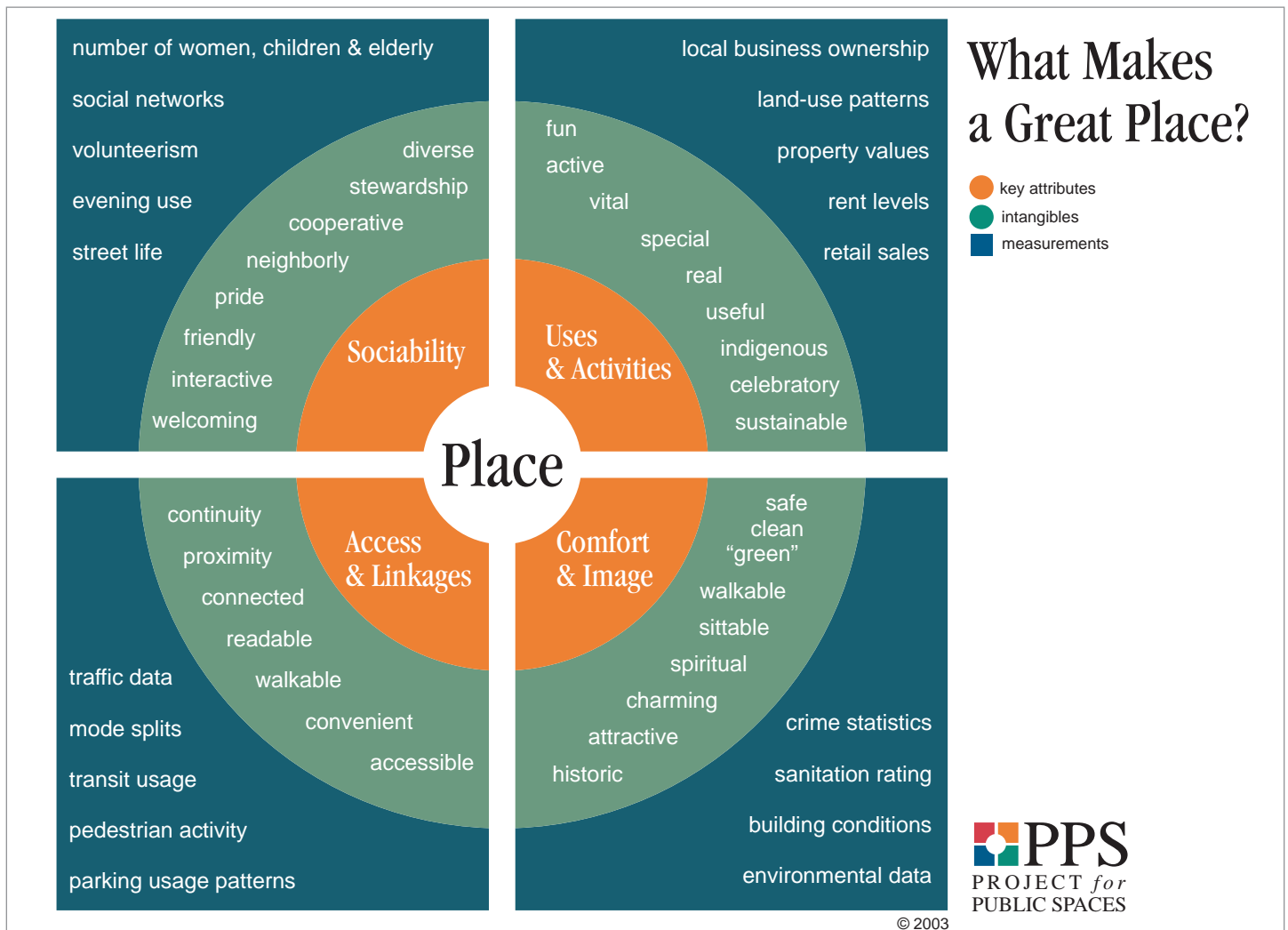
### Arts/Culture

- Chamber Music Sedona
- Fine Art Museum of Sedona
- Northern Arizona Watercolor Society
- Sedona Historical Society
- Sedona Area Guild of Artists
- Sedona Arts Center
- Sedona Visual Arts Coalition
- Sedona International Film Festival
- Sedona Symphony

# PARKS AND PUBLIC PLACES

► **Policy 3.3 - Create places where people get together, interact, and share experiences.**

Incentivize development projects to include amenities that invite positive social interactions. This can be as simple as adding benches or something more substantial, such as creating a shady courtyard with tables, or an indoor meeting room open for use by local groups. Amenities can be added to an existing site or transform a site.



**Figure 3.1. How to Create Great Public Spaces**

There have been many studies on what makes a place attract people, makes them stay, and return regularly. This can be seen as a menu of ingredients to improve upon or create a place for community.

► **Policy 3.4 - Provide a variety of facilities and park amenities that serve Sedona resident’s varied interests and abilities.**

To be an active, healthy community there should be public places that provide opportunities and activities for all skills and abilities, from pickleball, basketball, and mountain biking to walking, creative arts, and learning. This can happen at public places, private venues, non-profit or commercial places.

► **Policy 3.5 - Ensure that City projects contribute to a sense of community.**

Public parks and other projects can help build a sense of community and advance other community goals. It is important for residents that may or may not use the facility to have the opportunity to provide feedback at the earliest stages. This gives park users and other stakeholders a chance to weigh in on the advantages, drawbacks, and alternatives.

**Sedona’s Community Places**

A sampling of public places in Sedona:

City Parks & Public Spaces

- Posse Grounds Park
  - » Dog Park
  - » Bike Skills Park
  - » Barbara Antonsen Memorial Pavilion
  - » The HUB
- Sunset Park
- Future Ranger Station Park

Community Places

- The Sedona Library
- The Sedona Arts Center
- Sedona Heritage Museum
- Yavapai College, Osher Lifelong Learning Institute



**Ranger Station Park**

The park is located at 250 Brewer Rd. The focal point of the park is the original Forest Service Ranger Station house and barn, adapted for use as community meeting spaces.

The Park Master Plan objectives reflect Community Plan goals:

- Honor the history
  - Build a sense of community
  - Create community interactions
- Engage people in healthy and active amenities
  - Incorporate art in the park
  - Design for a sense of place and sustainability

# RECREATION AND EVENTS

## ► Policy 3.6 - Offer activities, events, and programs that bring people together throughout the year.

These may be public or private events (see examples below) often led by volunteers that not only support, but create and lead events while sharing their talents, interests, and knowledge. For more people to participate, they need to know in advance, and know that they are welcome. This can be through the marketing of events as well as creating an all-inclusive listing on a website, email newsletter, and social media.

## ► Policy 3.7 - Invite and involve everyone that makes this a diverse and interesting community.

Celebrating community diversity is essential to building a sense of community. To make this happen, there needs to be outreach through a variety of media that is in both Spanish and English.

## ► Policy 3.8 - Encourage residents to get involved in activities and events by participating or volunteering.

This should include people of all ages - kids, adults and seniors. Many of the events in town are put on by local organizations that rely on volunteers to plan for and work at festivals and smaller events.

### Community Activities & Events

#### City Parks and Recreation Activities

- Posse Grounds Park Events:
  - Red Dirt Concert Series
  - Food Truck Festival
  - Free to be Me Drumming Sessions
  - Ecstatic Dance Thursdays
  - Yappy Hour with Dogs
  - Storytime in the Park
  - Summer camps for kids

- Athletic Programs:
  - Youth and adult soccer
  - Pickleball
  - Ultimate Frisbee
  - Swim and tennis lessons
  - Basketball, volleyball, open gym
- Holiday Events for Families:
  - St Patrick's Day Parade
  - Celebration of Spring
  - Pumpkin Splash
  - Breakfast with Santa

#### Community Festivals

- International Film Festival
- Oktoberfest
- Sedona Hummingbird Festival
- Sedona Mountain Bike Festival
- Sedona Wine Festival
- Sedona Yoga Festival

# ARTS & CULTURE

## ► **Policy 3.9 - Build community through community engagement in arts and culture.**

There are many organizations in the city that offer classes, workshops, and other educational resources. There are also groups that rely on volunteers, and all could be enhanced or expanded by raising awareness and participation among residents. The following community values highlighted in this Plan are also areas of focus for local organizations.

- Environment
- Arts
- Wellness and recreation
- History
- Sustainability
- Community support

## ► **Policy 3.10 - Expand the City's arts and culture programs and partnerships.**

The following are examples of potential City programs and partnerships:

- Partnership programs that embrace aging - with arts, cultural, and wellness activities.
- Involve the schools and youth in community events, activities, and programs.
- Sponsor art experiences, either pop-up, temporary, or interactive that highlight local artists - visual, literary, performing arts, and music.


## ► **Policy 3.11 - Preserve historic sites and celebrate Sedona's history.**

The City Historic Landmark program should continue to grow through the identification of significant sites and encouragement of owners to designate their property as a landmark. The City should also continue to partner with and support the Sedona Historical Society to provide cultural heritage programs, exhibits, and events for the community.


### **City Arts & Culture Program**

The following is a sampling of programs led by the City Arts & Culture Coordinator:

- Artist in the Classroom
- Roundabout Public Art
- Mayor's Arts Awards
- City Hall Art Rotation Exhibits
- City Council Moments of Art

 City Arts and Culture Program [www.sedonaaz.gov/your-government/departments/arts-and-culture](http://www.sedonaaz.gov/your-government/departments/arts-and-culture)

# COMMUNITY ACTIONS

1. Ensure that communication of City information is bilingual, including websites, mailings, social media, emails, and printed materials in Spanish and English.
2. Improve City communications and messaging about opportunities for resident participation by providing online resources that connect residents to local organizations and activities, including the following:
  - Directory of local organizations.
  - Calendar of all community events and activities
  - Volunteer opportunities.
3. Update the criteria of the City's Small Grants Program to fund programs that build community.
4. Develop design guidelines to encourage community oriented features for both public and private development.
5. Improve City procedures to better incorporate Community Plan goals and priorities, public input, and development standards at the planning and design stage of City municipal projects.  See [Environment and Sustainability chapter](#), Innovative Building
6. Expand the capacity of the City's Arts and Culture Program.
7. Renovate The Hub building at Posse Grounds Park to better serve as a community meeting space.
8. Establish the Sedona Performing Arts Center as a place for community by developing a partnership between the school district, City, residents, and local organizations to better utilize this venue for arts, culture, and entertainment programs.
9. Develop a master plan for Posse Grounds Park that addresses access to the park, circulation within the park (vehicles, bicycles, and pedestrians), and parking. Consider passive and active recreation, and natural areas. The planning process must involve all park users (organized groups and individuals), the West Sedona School, and other stakeholders.





## 4. LAND USE

---

### Chapter Contents:

- » Overview
  - Land Use Key Issues
  - Synopsis 2013-2023
  - Current Land Use
- » Recommendations:
  - Future Land Use Map
    - Land Use Designations
  - Community Focus Areas
- » Land Use Actions

### LAND USE GOAL

---

*Sedona's unique sense of place and stewardship of the natural environment is reflected in the design and development of the built environment.*

# OVERVIEW

## LAND USE KEY ISSUES

- The city is nearly built out as of 2023, with 18% of available land base remaining to build on (excluding National Forest and dedicated open space)
- Need for new affordable housing when new buildable land is very limited
- Impact of short-term rentals
- Potential impacts of future development to environmentally sensitive areas, such as Oak Creek

## SYNOPSIS 2013 - 2023

- 2016-2019: Adoption of Community Focus Area (CFA) Plans for the Western Gateway, Soldiers Pass, Schnebly, and Sunset CFAs
- 2017: State permits short-term vacation rentals of single-family residential housing (and up to 4 unit properties), removing the City's previous prohibition on rentals of less than 30 days
- 2018: Adoption of new Land Development Code
- 2022: City acquires the former Cultural Park property and other parcels

### CURRENT LAND USE INCLUDING NATIONAL FOREST

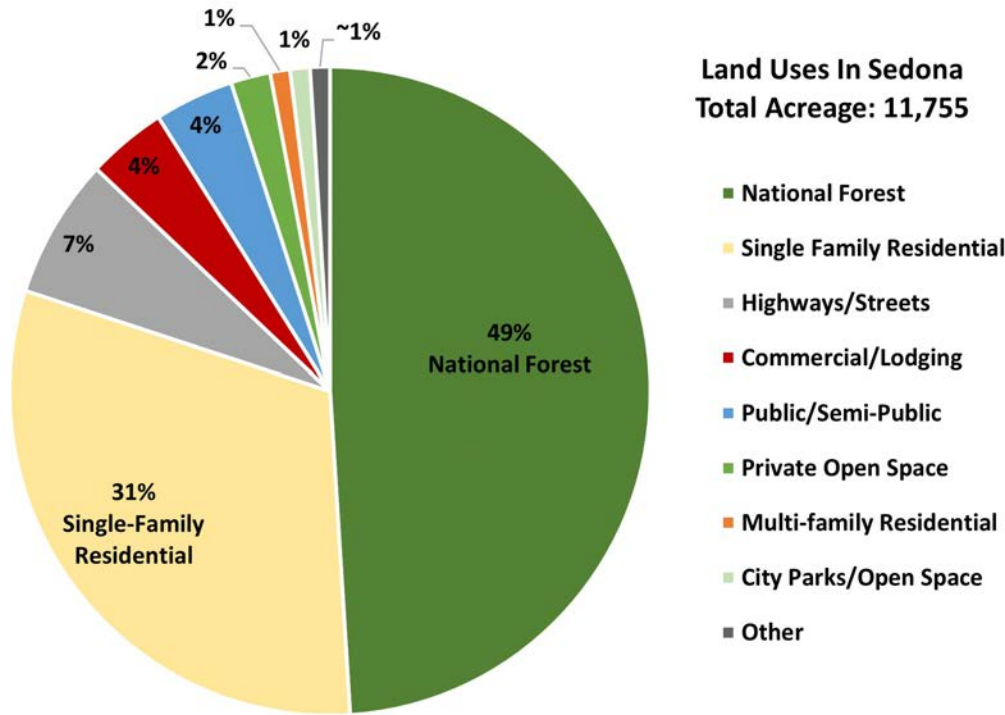


Figure 4.1. This shows the land within Sedona city limits by type of land use (how the land is being used, as of 2023). What is noteworthy is the amount of National Forest land in the city.

“Other” Land Uses:

1. Mobile Home Park (<1%)
2. State Trust Land (<1%)
3. Other City-Owned/Undeveloped (<1%)
4. Planned Development/Undeveloped (<1%)

### CURRENT LAND USE EXCLUDING NATIONAL FOREST

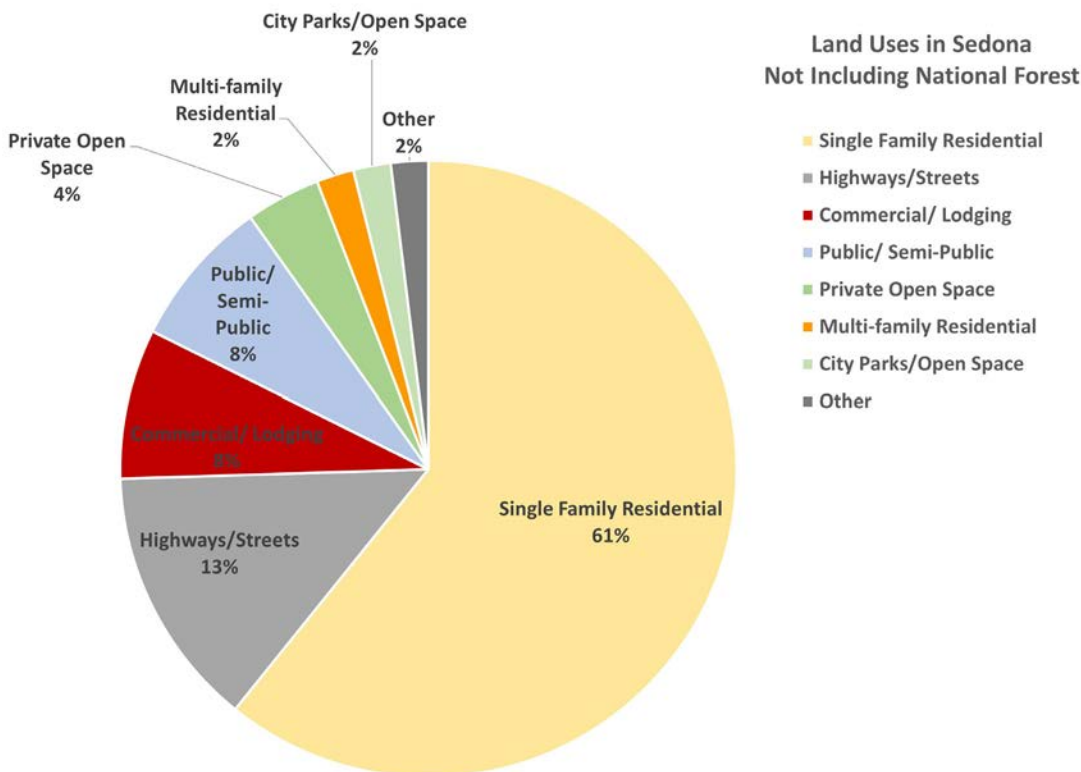


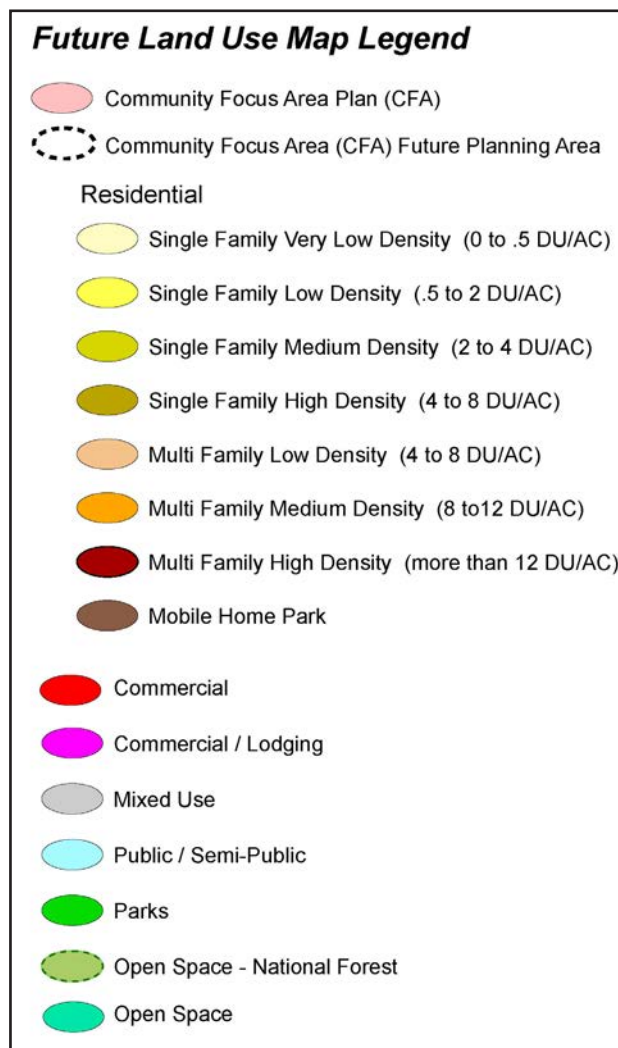
Figure 4.2. This excludes the National Forest land, and shows the remaining land use by type (how the land is being used, as of 2023). What is most noteworthy about this is the significant percentage of land with single-family homes.

# FUTURE LAND USE MAP

## WHAT IS THE FUTURE LAND USE MAP?

The map on the following page depicts the land uses recommended for each property in the city. Whereas, the Zoning Map is part of the Sedona Land Development Code, the Future Land Use Map is most relevant when a property owner does not want to develop under the existing zoning.

In this situation the proposed land use must align with the Future Land Use Map and the goals and policies of the Community Plan, otherwise the property owner must apply for an amendment to the Community Plan along with a rezoning application. Applications to change the Community Plan would be reviewed for adherence to the other goals and policies of the Community Plan (See Implementation Chapter).



### The Future Land Use Map Is:

- Property designations recommended for future development
- Guide for decisions on rezoning and development proposals

### It is *not*:

- A Zoning map
- Mandating development
- Changing property rights or zoning rights

### Figure 4.3. Land Use Designations

Descriptions of each land use designation shown in the legend to the left (and on the map) are described on the following pages.

### FUTURE LAND USE MAP

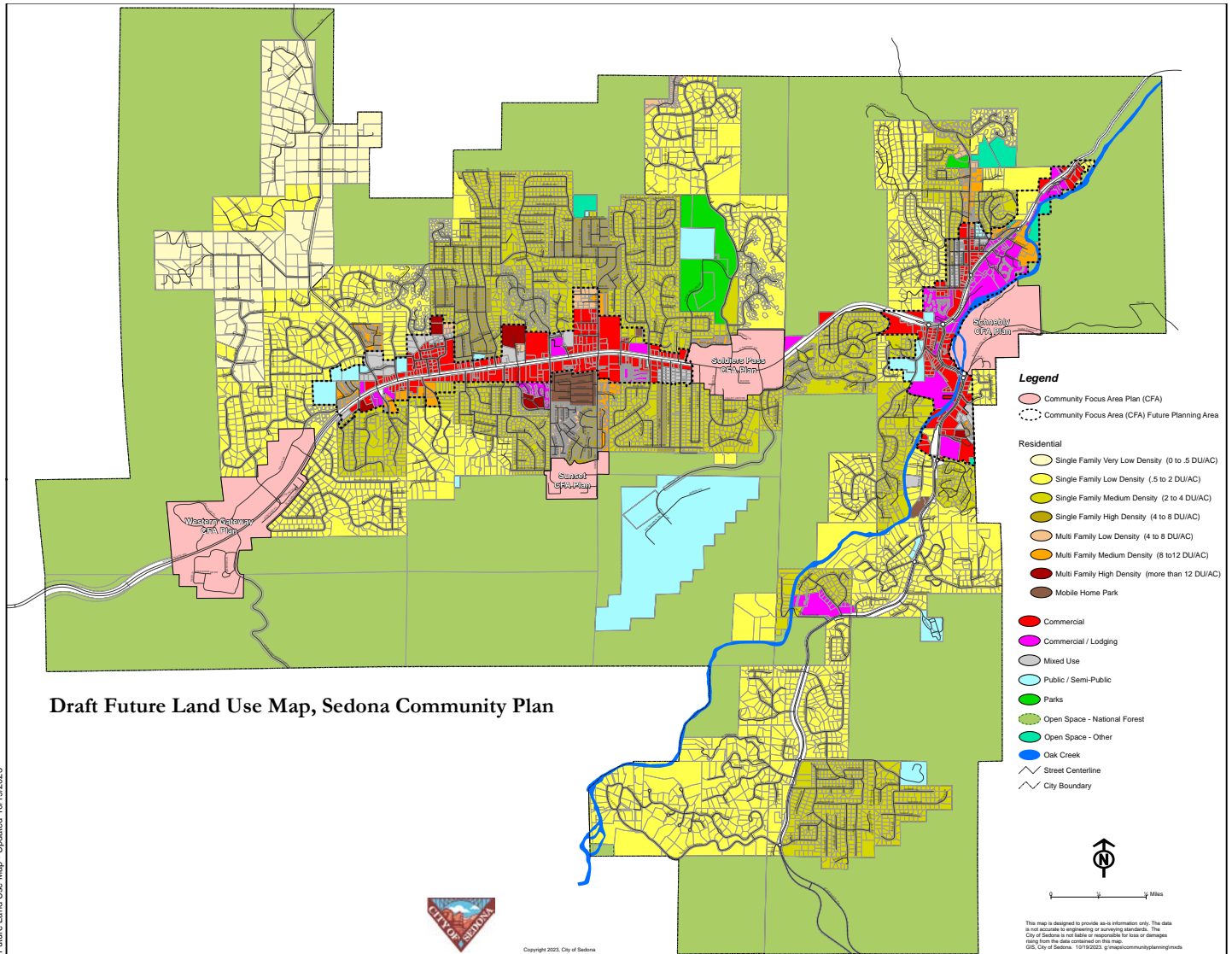


Figure 4.4. To view a more detailed map that can be zoomed in for easier viewing, please see the Exhibit of the Future Land Use Map (separate PDF file)

# LAND USE MAP DESIGNATIONS

The following are descriptions of the designations (and associated colors) that are on the Future Land Use Map.

## OPEN SPACE - NATIONAL FOREST

This designation is intended to support the long-term preservation of undisturbed areas in their natural condition.

National Forest Includes:

- Coconino National Forest within City limits
  - Excluding the Chapel of the Holy Cross which is on the National Forest, operating under a lease agreement
- Use and development of these areas is subject to approval by the Forest Service

## OPEN SPACE - OTHER

Natural Open Space Includes:

- Passive recreation areas with support infrastructure, such as trails and parking
  - Sugar Loaf Trailhead and Jordan Park open space (both city owned)
- Undeveloped floodplain along Oak Creek in Uptown
- Undeveloped lands adjacent to the Munds Mountain Wilderness

## PARKS

This designation is intended to support the development of public parks for active and passive recreational uses and community facilities

Includes:

- Jordan Historical Park, Posse Grounds Park, Sunset Park, Ranger Station Park

## PUBLIC/SEMI-PUBLIC

This designation is intended to support uses owned and operated by public/semi-public entities and for the benefit of the community.

Includes:

- Schools, library, airport
- Hospitals, churches, cemeteries
- Municipal uses, public parking areas
- Public utilities

## RESIDENTIAL MAP DESIGNATIONS

### SINGLE-FAMILY RESIDENTIAL

This designation is intended to support the development of single-family homes. Cluster development, typically with subdivisions, is encouraged to direct development away from environmentally sensitive portions of a site (floodways and floodplains, steep slopes, ridgelines, etc.) and open space buffers are recommended when adjacent to the National Forest to minimize wildland-urban interface impacts such as wildfire.

- Includes one residential dwelling unit on one lot, and one accessory dwelling unit

### MULTI-FAMILY RESIDENTIAL

This designation is intended to support the development of multiple dwelling units on a single property. Multi-family designations can serve as a transition, or buffer, between non-residential development and single-family residential development and may be considered in areas with access to transit, shared use paths, or other amenities. In addition, multi-family residential can occur within commercial areas and mixed use development.

- Includes multiple residential dwelling units on one lot

May include the following:

- Townhouses, condominiums, apartments, duplex/multiplex, patio homes, and other single-family attached styles

### MOBILE HOME PARKS

This designation is intended to recognize the existence of existing mobile home parks as a unique land use. These are some of the most affordable housing options for low and moderate income households. If these areas are re-developed, the existing densities (dwelling units per acre) should be retained or increased regardless of housing type.

- Includes existing mobile home parks that are not under a different land use designation

#### Note on Density:

Densities greater than 12 units per acre are supported on a case-by-case basis with consideration of strategies that address local housing needs, housing diversity, affordability, and availability.

**See the Housing chapter for details.**

## NON-RESIDENTIAL MAP DESIGNATIONS

### MIXED-USE

This is a new future land use designation not found in the 2013 plan. Many of the properties now showing as mixed-use were designated as a Planned Area. That designation was not carried forward.

This designation is intended to support developments with a variety of uses, including residential, commercial, office, community, and educational. Mixed use areas can serve as a transitional between more intense commercial uses and residential and should be considered in areas with access to transit, shared use paths, or other amenities.

May include any of the following:

- Commercial retail, office and services
- Public and semi-public uses
- Multi-family Residential\* - Medium density (8-12 units per acre) or High Density (more than 12 units per acre)

### BENEFITS OF MIXED-USE DEVELOPMENT

Areas of compact, mixed use and walkable development can be people-friendly places, where people can live, work, shop, dine, and play, since a variety of needs are met in one appealing place. Compact development creates more walkable activity centers that contribute to quality of life by being more sustainable, less car-dependent and more people-friendly. Mixed use and more compact development scenarios are especially encouraged within the West Sedona Corridor.

Compact, mixed use and walkable development combine housing options with services and retail uses, and typically include venues for entertainment and the arts mixed with education and civic functions, a central community gathering space, all linked by walkways. Residents can enjoy living and working in the same area without having to drive everywhere. They can expect to have chance encounters with neighbors, co-workers and visitors, enhancing communication, collaboration and a sense of community. The following attributes indicate an area of mixed-use development.

- Inclusive people places
- Walkable and bike-able
- Transit-oriented
- Diverse housing choices
- Safe, active and lively
- Appropriate for infill
- Inclusive of local businesses
- Outdoor public spaces
- Compact, or concentrated



## COMMERCIAL

This designation is intended to support general retail and other commercial and service uses. Land uses that are characterized by frequent visits of customers and clients should be located in areas with good vehicular circulation.

With the exception of areas within an approved Community Focus Area, commercial uses should be limited to the W SR 89A and SR 179 corridors as designated on the Future Land Use Map.

Heavier commercial service uses that serve local needs may be considered within the existing commercial areas if:

1. Uses are not located adjacent to the highway
2. There is no outside storage involved
3. Significant buffering to residential areas can be provided
4. Traffic generation is minimal

May include any of the following, or a combination of:

- Retail, office, services
- Heavy commercial, light manufacturing
- Multi-family residential\*

## COMMERCIAL/LODGING

This designation is intended to support resort and lodging uses, including accessory commercial and service uses, in a manner that:

1. Is consistent with the Sedona Community Plan or specific plan for the area
2. Preserves the unique character of Sedona
3. Is compatible in size, scale, intensity, and character of other surrounding uses
4. Accommodates adequate vehicle parking and circulation
5. Promotes creative design and is sensitive to the natural environment

May include any of the following, or a combination of:

- Hotels, motels, and timeshares
- Commercial retail and services
- Multifamily uses (\*See Note on Density and/or the Future Land Use Map)

### **\*Note on Density:**

Multi-family residential densities greater than 12 units per acre are supported on a case-by-case basis with consideration of strategies that address local housing needs, housing diversity, affordability, and availability.

**See the Housing chapter for details.**

# COMMUNITY FOCUS AREAS

CFAs are locations where the City plays a proactive planning role to implement the Community Plan's vision and goals. CFAs are primarily commercial areas with properties likely to be developed or have redevelopment potential, but may include adjacent residential properties to ensure a good transition to lower density residential uses.

Implementation Tools of CFA Plans:

- Incentives for specific types of development
- Flexibility in development standards for more creative, innovative designs
- Incentives to consolidate properties under unified, coordinated planning
- Transitional land uses buffering more intensive commercial from single-family residential

## COMMUNITY FOCUS AREAS (CFAs)

### ADOPTED CFA PLANS

See the Future Land Use Map for locations.

#### Western Gateway CFA Plan

Adopted May 24, 2016 (Resolution 2016-18)

Amended August 10, 2022 (Resolution 2022-22)

#### Soldier Pass Road CFA Plan

Adopted April 12, 2016 (Resolution 2016-17)

Amended August 10, 2022 (Resolution 2022-23)

#### Schnebly CFA Plan

Adopted April 11, 2017 (Resolution 2017-09)

Amended November 10, 2020 (Resolution 2020-23)

#### Sunset CFA Plan

Adopted April 9, 2019 (Resolution 2019-07).

 Adopted CFA Plans

[www.sedonaaz.gov/communityplan](http://www.sedonaaz.gov/communityplan)

## **PROPOSED CFA PLANS: WEST SEDONA CORRIDOR AND UPTOWN**

The West Sedona Corridor and Uptown can be transformed into vibrant and walkable destinations through the recommendation of CFA Plans.

### **OPPORTUNITIES**

- Safety, comfort and convenience for pedestrians, bicyclists, and those with disabilities. See the Circulation chapter and GO Sedona Pathways Plan.
- Beautification
- Incentives for redevelopment
- Distinctive character or design themes
- Make more efficient use of currently underutilized parking lots
- Create transitions and buffers to single-family residential neighborhoods

### **HOW ARE CFA PLANS DEVELOPED?**

1. Input from residents, property owners, neighbors, businesses, and stakeholders
2. Planning and Zoning Commission public hearing and recommendation to City Council
3. City Council public hearing and adoption of the CFA Plan
4. Minor amendment is made to the Community Plan's Future Land Use Map to designate the area as having a CFA Plan

# WEST SEDONA CORRIDOR COMMUNITY FOCUS AREA

## AREAS

This CFA plan has the following two areas with similar opportunities but distinct attributes:

1. Dry Creek/W SR 89A
2. Rodeo-Coffeepot/W SR 89A

## OPPORTUNITIES

- Build on the existing attributes
- Identify transition areas appropriate for multi-family residential
- Work with property owners to upgrade non-conforming uses
- Redevelopment and redesign potential of large shopping complexes
- Reduce number of redundant or unnecessary curb cuts on W SR 89A
- Establish parallel alternatives to W SR 89A for vehicles and/or bicycle/pedestrians
- Improve walkability and bike-ability, including:
  - Safer crossings of W SR 89A; Alternative routes parallel to W SR 89A; Extend sidewalks on both sides of the cross-streets

## ATTRIBUTES

1. Dry Creek/W SR 89A Area
  - Civic: City Hall, fire station, pocket parks
  - Education: library, charter school
  - Residential: townhomes and apartments
  - Lodging: hotels, motels, B&Bs
  - Social: outdoor cafes, pizza place, coffee shops, churches
2. Rodeo-Coffeepot/W SR 89A Area
  - Entertainment: 2 theaters
  - Lodging: timeshares, motel, hotel
  - Retail and Restaurants: 3 grocery stores, pharmacies, coffee shops
  - Residential: townhomes, mobile home parks



Figure 4.5. Proposed West Sedona CFA

Note: The map above shows a potential boundary of the CFA Plan. The exact boundaries will be determined during the CFA planning process.

## UPTOWN COMMUNITY FOCUS AREA

### AREAS

There are two areas proposed for this CFA Plan, each having distinct attributes and opportunities.

1. Uptown
2. Ranger Road

### 1. UPTOWN AREA

There is a draft Uptown CFA Plan that was completed in 2021, however it was put on hold in order to proceed with the Community Plan update. The draft CFA plan can be a starting point for a new planning process.

### OPPORTUNITIES

- Large, undeveloped properties along Oak Creek
- Redevelopment potential
- Potential for public creek access and/or creekside park.
- Forest Road connection to W SR 89A
- Coordinated planning for land use, circulation, and parking
- Need for a multi-modal circulation plan for Uptown and the Ranger Road area that addresses:
  - Walking and biking safety
  - Transit circulation and stops
  - Parking
    - Resident parking
    - Employee parking
    - Tourist parking
  - Guided tours drop-off and pick-up
  - Main Street deliveries
  - Streetscapes

### ATTRIBUTES

- Lodging: multiple hotels and resorts of all sizes
- Retail shops and restaurants
- Multi-family residential areas, especially along Jordan Rd
- The Sedona Subdivision - one of Sedona's oldest subdivisions
- Historic Sedona Arts Center
- Many historic buildings
- Challenging topography and access for northern area

**2. Ranger Road Area OPPORTUNITIES**

- Ranger Station Park on Brewer Rd as community gathering place
- \*4 buildings on the National Register of Historic Places (denoted below by asterisks)
- Potential for creekwalk
- Proposed Ranger Road roundabout connection to Forest Rd connector
- Redevelopment opportunities resulting from transportation projects
- Public parking and transit access improvements
- Improved walkability and bikeability
- Access to the National Forest, Soldiers Wash trail system

**ATTRIBUTES**

- Tlaquepaque and Gallery Row: mix of shops, galleries, and lodging
- Ranger Station Park on Brewer Rd
  - City-owned historic landmarks\*: Ranger Station house and barn
- City of Sedona offices and municipal court on Brewer Rd
- City-owned land near Brewer/89A roundabout
- Hart Store Historic Landmark\* at Ranger/Brewer
- Pumphouse Historic Landmark\*
- Pedestrian underpass at Oak Creek/SR 179 (Under construction as of Spring 2024)

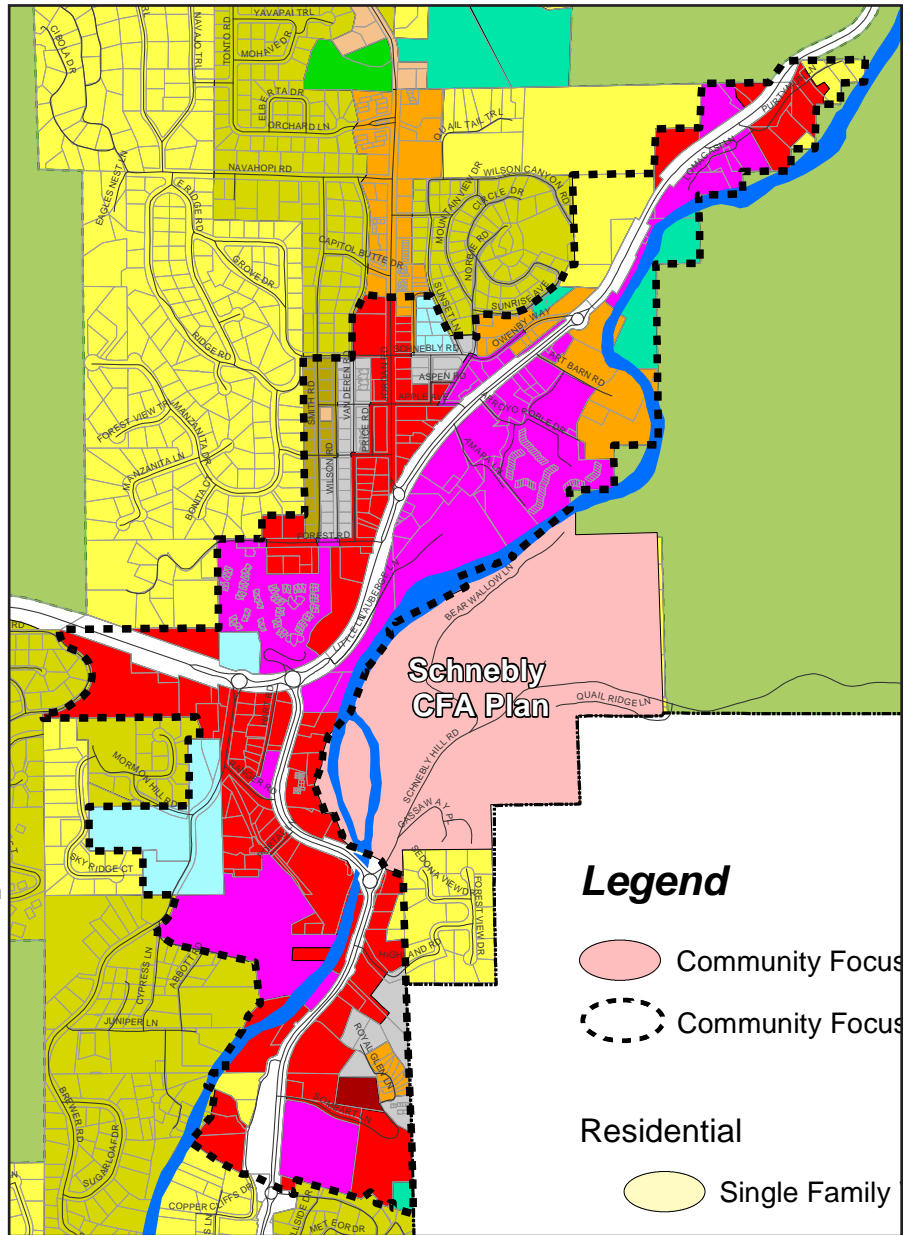


Figure 4.6. Proposed Uptown CFA

Note: The map above shows a potential boundary of the CFA Plan. The exact boundaries will be determined during the CFA planning process.

# LAND USE POLICIES

- ▶ **Policy 4.1** - Partner with the Forest Service to ensure National Forest lands within City limits remain public open space and not exchanged for private development.
- ▶ **Policy 4.2** - Participate in regional planning with agencies and organizations in the Verde Valley.
- ▶ **Policy 4.3** - Maintain design standards that reflect Sedona’s “sense of place”, historic and cultural heritage, viewsheds, and environment and natural resources.
- ▶ **Policy 4.4** - Support cluster development to direct development away from more environmentally-sensitive portions of a site.
- ▶ **Policy 4.5** - Allow densities greater than 12 dwelling units per acre through consideration of projects with strategies for achieving housing diversity, affordability, and availability to address housing needs in areas designated for Multi-family High Density, Commercial, and Mixed Use.
- ▶ **Policy 4.6** - Transform the commercial corridors into a mix of residential, commercial, and public uses well-connected for walking, biking, or using transit.
- ▶ **Policy 4.7** - Limit lodging uses to locations within the Commercial/Lodging designation on the Future Land Use Map or otherwise identified in an adopted CFA Plan.
- ▶ **Policy 4.8** - Require parking standards that are consistent with multi-modal transportation, mixed and shared uses, promote efficient use of space, and minimize asphalt coverage. See [Circulation chapter](#).
- ▶ **Policy 4.9** - Ensure that proposed land uses are compatible with adjacent aggregate (sand and gravel) resources, if these resources are identified by the State of Arizona (per A.R.S. 9-461.05 C.1.g.).

# LAND USE ACTIONS

1. Determine appropriate locations for the following identified needs: affordable multi-family residential, mixed-use development, and public gathering places.
2. Expand the designation of mixed-use where appropriate, as determined through the CFA planning process.
3. Develop a Land Use Master Plan for the Cultural Park property.
4. Conduct a feasibility study of future development at the Dells (City property south of the Wastewater Plant).
5. Develop a CFA Plan for the West Sedona Corridor.
6. Develop a CFA Plan for Uptown.
7. Evaluate potential for increased building height where view corridors are least impacted and where multiple stories may be the best option for development of multi-family housing and mixed-uses.
8. Evaluate the annexation of land, expanding city limits.





# 5. HOUSING

## Chapter Contents:

- » Overview
  - Housing Key Issues
  - Synopsis 2013-2023
  - Current City of Sedona Efforts
- » Recommendations
  - Housing Diversity
  - Housing Affordability
- » Housing Actions

## HOUSING GOAL

*Sedona has diverse housing options that are safe, secure, and affordable.*

# OVERVIEW

## HOUSING KEY ISSUES

- Lack of housing availability - for sale or rent
- High cost of housing - for sale or rent
- Lack of variation in housing types - 81% of Sedona's housing is single-family residential
- Impacts of short-term rentals (STRs), see following page
- Diminishing amount of buildable land in the City
  - Many of the remaining parcels are more difficult and expensive to build on (topography, drainage, etc.)
- Builders tell us that our development codes, costs, and overall experience working with the city make it very difficult to build housing in Sedona
- Housing is a key issue for economic development
  - Sedona has a large gap between wages and housing costs
  - Housing issues adversely impact employee recruitment and retention

## SYNOPSIS 2013 - 2023

- 2017: Short-term vacation rentals are legalized by the State of Arizona
- 2020: COVID-19 Pandemic affected the supply and cost of building materials
- 2020: City of Sedona [Housing Study](#), which states that Sedona will need an additional 1600 housing units to meet our needs
- The [Verde Valley Housing Study](#) states that the Verde Valley will need around 3600 units
- Housing Program established with 2 new staff positions: Housing Manager (2021) and Housing Coordinator (2023)
- Cultural Park property in West Sedona purchased by the City

### The City of Sedona Housing Programs

- City Housing Fund: City Council allocated \$12 million to incentivize and help finance the development of affordable housing in Sedona
- Sedona Workforce Homeownership Assistance Program for eligible workers
- Sedona Employer Assisted Housing Program for City of Sedona employees
- Rent Local: City pays short-term rental owners within City limits to rent to a local worker for at least one year
- Deed Restriction Program: Homeowner may place a voluntary deed restriction on their property preventing its use as a Short-Term Rental (STR)

 City Housing Program: [www.sedonaaz.gov/housing](http://www.sedonaaz.gov/housing)

FEBRUARY 28th DRAFT

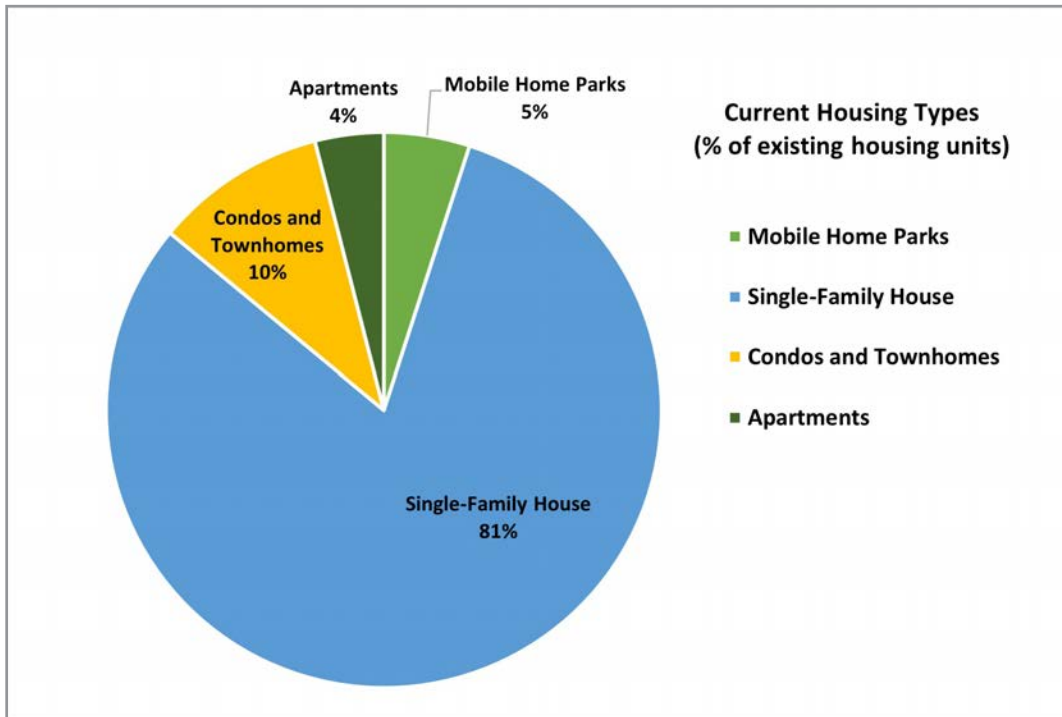


Figure 5.1. Single-family houses are the biggest slice of the pie. Source: City of Sedona, 2022.

## SPOTLIGHT

### Western Gateway C Cultural Park

In 2022 the City of Sedona bought the 40-acre property (site of former amphitheater) to ensure that future development on what is Sedona's largest, undeveloped properties in the city limits, will accommodate a variety of housing types, sizes, and cost. A land use master plan is proposed that will include community and stakeholder input to incorporate other community needs. This property is included in the Western Gateway Community Focus Area Plan, which will be the basis of future planning.

## MULTI-FAMILY HOUSING IN SEDONA

First, what is it? It's housing that is not a single house on a single lot, and is typically smaller units on smaller lots, or concentrated with many smaller units on a lot. Building more multi-family housing can happen a number of ways such as building up (taller buildings), infill (filling in the vacant lots and or splitting large lots), or spreading out (not an option with National Forest in city limits). What is Sedona willing to do to increase the amount of housing?

### The advantages of more multi-family housing:

- Accommodates more people on less land
- Units can be smaller in size with a mix of sizes within one complex
- Can be located in mixed-use areas more convenient for walking and transit
- Smaller housing units can cost less to build, own, or rent

### Why is Sedona lacking multi-family housing?

1. Only 14% of the city is zoned for multi-family housing
2. Sedona height restrictions (no more than 2-3 stories allowed)
3. Compared to other cities, Sedona has relatively low density limits
4. At 82% build-out, there is a limited amount of buildable property
5. High property values
6. Development, materials, and labor costs

## DID YOU KNOW?

Zoning is set by the Land Development Code - not to be confused with the Future Land Use Map (see [Land Use chapter](#)) which is set forth in this Plan.

Multi-family housing can be built in a Commercial zoning district without rezoning.

# HOUSING DIVERSITY

► **Policy 5.1 - Expand Sedona's mix of housing types to meet the needs of a diverse and vibrant community.**

A complete and thriving community is made up of people at different stages in life - singles, couples, families, and seniors - who want housing options that suit their lifestyle, circumstances, and budget. Examples of alternatives are cottages, duplexes, triplexes, and age-in-place units.

► **Policy 5.2 - Encourage more redevelopment of the commercial corridors to include a mix of uses, including multi-family housing.**

There are locations for multi-family housing that can accommodate increased height and density, and take advantage of access to transit and walkability. Siting these projects will take into consideration scenic views and neighboring homes. This can be determined with public input during the process of developing Community Focus Area (CFA) plans.

► **Policy 5.3 - Encourage collaboration among employers to provide workforce housing.**

Businesses cannot be successful if there is not enough (or affordable) housing to attract and retain employees. Rather than each company struggling to find a solution, it may be more effective for them to join forces. Already, several larger resorts are providing housing for employees to rent, and some provide shuttles from Cottonwood.

# HOUSING AFFORDABILITY

Sedona's lack of housing has begun to affect the entire community when businesses cannot attract or retain enough employees. Residents and visitors that rely on grocery stores, pharmacies, or medical offices have noticed that businesses sometimes reduce the hours or days open if there are not enough employees. The worst case scenario is that businesses close and/or residents relocate.

## ► Policy 5.4 - Pursue strategies that promote the development of affordable housing in Sedona.

The City's Housing Program is pursuing multiple projects in partnership with developers to build more housing in Sedona. There may be additional ways to support the development of affordable housing, such as improving procedures and policies that could lower costs, decrease time frames, minimize obstacles, increase efficiencies, and streamline customer and employee workflow.

## ► Policy 5.5 - Increase the Verde Valley's supply of affordable housing for the area's workforce, homeless, and others in need through regional partnerships.

As a small town in an extraordinarily scenic setting, housing is more expensive in Sedona compared to the surrounding communities. In the past, people working in Sedona could find more affordable places to live in Cottonwood, Village of Oak Creek, and Camp Verde. However, housing costs in these communities has been rising over the last ten years, diminishing the cost savings of living in neighboring communities. It has become increasingly problematic for employers to recruit and retain employees.

## ► Policy 5.6 - Address rental housing conditions when the health, welfare, and safety of Sedona residents are at risk.

In some instances, when affordable housing can be found, building conditions can be unsafe, unhealthy, and don't meet city standards. During the public outreach in 2022, residents expressed their fears of losing their housing with little notice, which had happened to others in their community. Often the 'affordable' housing is tolerated since asking a landlord to make repairs can mean losing the housing, as landlords know there are others willing to take their place. This is an issue that can be addressed at the local, city level and through state policies.

### The Role of Building Codes

To protect the public's health, safety, and welfare. The codes are not arbitrary, but are the foundation of safe construction.

Suggestions to modify to code to reduce housing costs cannot come at the expense of the public's health, safety and welfare.

### What is Affordable?

Housing is considered "affordable" if it costs no more than 30% of a household's income.

### The Increasing Cost of Housing

The median housing price for a single-family home:

\$1,050,000 in 2022  
 \$650,000 in 2020  
 \$330,000 in 2011  
 \$600,000 in 2007

# HOUSING ACTIONS

1. Assess ways to improve City procedures, policies, and programs to better support the building of affordable housing.
2. Amend the Land Development Code to advance city housing initiatives as outlined in this Plan.
3. Update the City's Development Incentives and Guidelines for Affordable Housing (DIGAH).
4. Participate in regional housing programs (new and existing) that benefit Sedona and the Verde Valley.
5. Identify incentives that support and encourage developers to build more affordable multi-family housing.
6. Develop programs and partnerships that provide support to both tenants and property managers.





## 6. CIRCULATION

### Chapter Contents:

- » Overview
  - Circulation Key Issues
  - Synopsis 2013-2023
  - Sedona In Motion
- » Recommendations
  - Multimodal Network
  - Walking and Biking
  - Transit
  - Streets
  - Uptown
  - Parking
- » Circulation Actions

### CIRCULATION GOAL

*Build a complete and connected circulation network that is safe, convenient, and efficient for all users and all modes of travel.*

# OVERVIEW

## CIRCULATION KEY ISSUES

- Traffic congestion, particularly at the Y and Uptown pedestrian crossings
- Lack of street connectivity
  - Lack of emergency evacuation routes
  - No “relief” or alternate routes (e.g., to W 89A, east-west route in West Sedona)
  - Result of subdivisions that developed prior to incorporation
- Arizona Department of Transportation (ADOT) jurisdiction of W 89A and SR 179 means Sedona is limited in what improvements can be made
- Walking and biking safety
  - Few or inadequate sidewalks, bike lanes, etc.
  - Roundabout safety, especially for bicyclists
  - W 89A is car dominant and at times high traffic congestion
  - Lack of safe crossings of W 89A that is seen as an obstacle to bikes and pedestrians going north-south
- Cost of improvements and need for sustainable funding sources
- Lack of communication and understanding that there is no single solution to solving traffic congestion
- Transit system slow to happen
  - Need for sustainable funding
  - Lack of transit connectivity (limited routes and times for the Verde Shuttle)
  - Resident perception that transit is for visitors not residents, especially with the trailhead shuttles being the first to launch
  - Uptown “seek and find” parking adds to congestion
- Lack of or inadequate signage to direct tourists (wayfinding) to parking and around town, especially in Uptown
- Not enough parking at certain locations at peak times, leading to overflow of vehicles onto neighborhood streets, and safety concerns

## SYNOPSIS 2013-2023

- 2018: Transportation Master Plan (Sedona In Motion) completed
- 2018: 1/2 cent sales tax approved to fund projects
- 2020: GO Sedona Pathways Plan (GO Plan) completed
- 2021: Tax permanently extended to fund transit system
- 2022: Transit Implementation Plan completed, Transit program established, and transit manager hired

## Sedona In Motion (SIM)

The City's comprehensive Transportation Master Plan, completed in 2018 was followed by the passage of a ½ percent sales tax increase to fund transportation projects. Sedona in Motion was established as the Transportation Master Plan's implementation program, a top priority of City Council. In November 2021, Council voted to permanently increase the City Transaction Privilege Tax from 3% to 3.5% by removing the previous 10-year (2018-2028) sunset from the ½ percent tax increase. The ½ percent permanent increase will be dedicated to transportation purposes, including the implementation of a transit system in Sedona.

## Completed SIM Projects

The following are a few of the completed projects as of 2023:

- Uptown Roadway Improvements, Phase 1
- Uptown wayfinding signs for public parking lots and pedestrian signs
- Los Abridados/Brewer Road connection
- Launched the trailhead shuttle program with 3 park-and-ride lots
- New shared-use pathways (4.5 miles): , Soldier Pass Rd, Posse Grounds parking connector, Dry Creek Road phase 1
- Dynamic Message Sign installed adjacent to I-17 north of General Crook Trail

### Completed Bicycle and Pedestrian Projects

- Thunder Mountain/Sanborn Drive
- Soldiers Pass Rd Path and Posse Ground Park connector path
- Sunset Road pathway and Sunset Park connector path
- Chapel Rd Path
- Green bicycle safety lanes on W 89A

## SIM Strategies

- SIM-1 Uptown Roadway Improvements
- SIM-2 Uptown Pedestrian Improvements
- SIM-3 Parking & Wayfinding
- SIM-4 SR 179 Improvements, Schnebly Roundabout to the Y
- SIM-5/6 Neighborhood Connections
- SIM-7/8 Enhanced Transit Service
- SIM-9 Neighborhood Vehicles
- SIM-10 West Sedona Access Improvements
- SIM-11 Bicycle and Pedestrian Improvements
- SIM-12 Traveler Information



[www.sedonaaz.gov/SIM](http://www.sedonaaz.gov/SIM)

## What About Bypasses or Bridges?

Studies have shown that building new bypasses or new bridges over Oak Creek are not the panacea many hope for. Why bypasses and bridges are not being pursued:

- Costs far outweigh benefits (cost of construction, land acquisition, etc)
- Jurisdiction - outside city limits, through the National Forest/Yavapai County
- Traffic modeling by engineers findings of no significant reduction to traffic congestion
- Contradictory to Sedona's core values: environmental stewardship, sense of place, community character, etc.
- Environmental impacts

# MULTIMODAL NETWORK

The [Transportation Master Plan](#) (Sedona in Motion, or SIM) findings recommend that a multi-pronged approach that goes beyond roads and cars is essential to addressing Sedona's traffic and parking issues. A connected network for all modes is needed, whether it is driving, walking, biking or taking the bus.

- ▶ **Policy 6.1 - Develop a multi-modal circulation network that provides for safe alternatives to get around town while improving traffic flow and reducing reliance on the automobile.**

Addressing traffic will take a multifaceted approach; there is no single solution, street connection, or mode that will reduce traffic congestion in Sedona. There are too many cars, thus reducing the number of cars on the road is one of the primary goals for a multimodal network. What it will take: 1) improving infrastructure for all modes, 2) providing transit and alternatives to cars, 3) prioritizing walking and biking improvements, and 4) encouraging visitors, residents, and employees to use other ways of getting around than by car.

- ▶ **Policy 6.2 - Take a comprehensive, holistic approach to transportation and land use planning to improve resident's quality of life and the visitor experience.**

Land use planning, new commercial and residential development, redevelopment, and public infrastructure projects should be integrated to achieve the vision and goals as set forth in this Plan.

- ▶ **Policy 6.3 - Communicate the Sedona in Motion program goals, priorities, and progress.**

The public has expressed frustration with the SIM projects as they see projects under construction but are not seeing the big picture. It is important to convey how all the projects are components of a larger, connected network that takes time to develop. As SIM projects are completed and the program evolves, it will become even more important to communicate the big picture to the public.

## What is Multimodal?

Transportation by various modes: vehicle, bus, bicycle, walking.

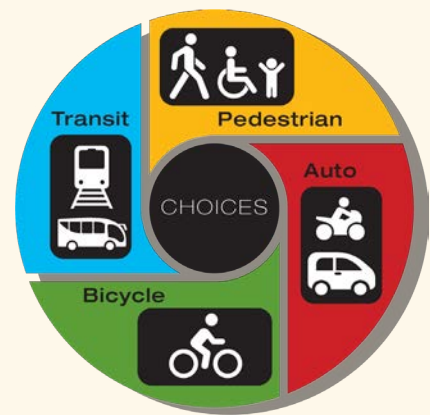


Figure 6.1. Examples of multimodal transportation. Image source: goraleigh.org

► **Policy 6.4 - Pursue a collaborative regional circulation plan that addresses destination access, transit, and parking.**

The very nature of transportation is that people are on the move. Addressing traffic and transit in particular must take a regional approach to match how visitors and residents move through the Verde Valley.

► **Policy 6.5 - Design projects for people, ensuring the experience is safe, comfortable, interesting, and efficient.**

The success or popularity of public infrastructure projects like pathways, roads, or transit may depend on the design details that make it a good or bad experience for the user.

### **What makes a Walkable City?**

There are four conditions that influence the walkability of a place: 1) do you feel safe? 2) is it an interesting experience? 3) do you feel comfortable, and 4) is it useful?

- Jeff Speck, "Walkable City: How Downtown Can Save America, One Step at a Time," 2012  
[www.jeffspeck.com](http://www.jeffspeck.com)

### **Choice in Modes**

*"people living in the county often don't realize that their "choice" to travel by car is actually compelled by the lack of better multimodal facilities".*

- Larry Schoer, Howard County MD Multimodal Transportation Board in "Best Complete Streets Policies 2023" [smartgrowthamerica.org](http://smartgrowthamerica.org)

# WALKING AND BIKING

Walking and biking are healthy activities, and Sedona has an excellent climate and scenery to enhance the experience. Improving the safety, linkages, and amenities of a walking and biking network is important to encourage more people to leave their cars, which is critical for a walkable, mixed use environment.

► **Policy 6.6 - Prioritize pedestrian and bicycle safety improvements to major roadways.**

A 2020 survey of residents found that 68% of respondents were in support of allocating additional funding for walking and biking improvements from the circulation budget. The GO Plan has identified and prioritized projects that will improve safety which will also encourage more people to walk or bike.

► **Policy 6.7 - Create a network of pedestrian and bicycle infrastructure improvements and connections linking neighborhoods, activity centers, and popular destinations, and promote walkable, bike-able connections to transit stops.**

Since 2007, pedestrian enhancements have been implemented across Sedona. In 2020, the city introduced the GO! Sedona Pathways Plan. This plan incorporates recommendations from the Transportation Master Plan from 2018. The pathways network seeks to connect the 300 miles of trails inside and out of Sedona to our pathways inside the city. Sedona will be a more connected community: neighborhoods to each other; residents and visitors to major destinations like schools, parks, shopping, and the National Forest; and people of all ages and abilities to everything Sedona has to offer.



- [www.sedonaaz.gov/SIM](http://www.sedonaaz.gov/SIM)
- [GO! Sedona Pathways Plan](#)

► **Policy 6.8 - Plan future transportation improvements and land use development at the same time and support a diversity of land uses within walking and biking distance of residential and lodging areas.**

Development in Sedona did not happen with walking and biking in mind. It developed as a rural community with incremental, unplanned growth before incorporation in 1988. Most neighborhoods have no sidewalks and for those that do, sidewalk are on only one side of the street. The main thoroughfares are 89A and 179, which are hard to avoid due to the lack of alternate routes or the need to cross them. Overcoming these challenges will take a strategic approach and close coordination with land use development. Efforts should focus on adding sidewalks and bike paths where they are needed most. They should connect people to where they want to go, in as direct and continuous a route as possible.

► **Policy 6.9 - Partner with the Forest Service to implement a trail access improvement plan.**

Refer to the [GO! Sedona Pathways Plan](#) page 22 for strategies to improve existing trailheads, develop new trailheads, and improve trail access. The goals are to: reduce parking conflicts in neighborhoods, expand trailhead parking capacity and better distribute use where appropriate. The other goal is to provide trails access without the use of a car via transit or walking/biking from home or lodging. One project in the works is a new improved Girdner trailhead at the Cultural Park that will be coordinated with future development to integrate public parking, visitor information, and transit.



# TRANSIT

Proposed in the 2020 [Sedona Area Transit Implementation Plan](#) and launched in 2022, the new Sedona Trailhead Shuttle serves five trailheads from three park and ride locations, and has seen a 23% increase in use from 2022-2023. The trailhead shuttles have markedly reduced traffic and parking congestion at these trailheads and nearby neighborhoods. The Verde Shuttle continues to provide service between Cottonwood and Sedona. Sedona’s on demand transit service (“micro-transit” or Sedona Shuttle Connect) is also set to begin in 2024.

► **Policy 6.10 - Develop a robust transit system that supports residents, employees, and visitors.**

The Sedona Transit Implementation Plan (STIP) projected a ten-year price tag of over \$109 million in transit capital and operating costs. However, due to the post-COVID economy this cost will be much higher, so funding will be a significant challenge as the city moves forward with developing its public transit system. However, there are additional grant funding opportunities annually through the federal Infrastructure Investment & Jobs Act Authorization program.

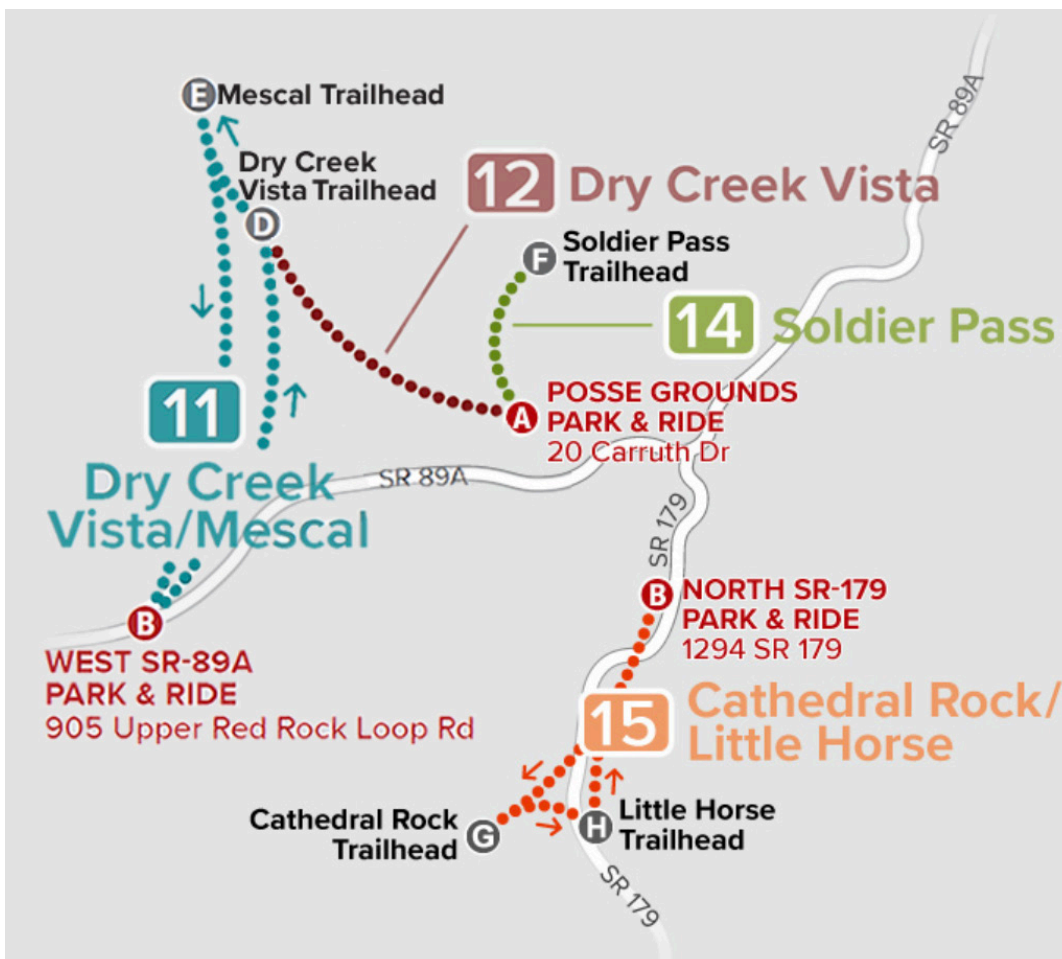


Figure 6.2. 2023 Sedona Trailhead Shuttle route map. Riders can connect to the Verde Shuttle at the North SR-179 Park & Ride.

[www.SedonaShuttle.com](http://www.SedonaShuttle.com)

► **Policy 6.11 - Incorporate transit service to and from major destinations to alleviate impacts on neighborhoods and improve the visitor experience.**

Trailhead shuttles were the first phase of the transit program, however, there are other popular destinations that should be high priorities for future transit service, such as attractions within residential neighborhoods, and places with high traffic congestion and insufficient parking.

## Summary of Transit Implementation Strategies

### Short-Range Transit Projects

Sedona Shuttle Connect:

- App-enabled demand response shared ride public transportation service
- Real time passenger scheduling and vehicle tracking

### Long Range Transit Projects

- Transit Maintenance & Operations Facility: Support the city's zero emission transit fleet with a micro-grid providing renewable solar energy
- Ride Exchange: Supports Multimodal Transportation Options
- Fixed Route Bus Routes:
  - Uptown
  - West Sedona
  - Village of Oak Creek
- Fixed Route Bus Routes, Phase 2:
  - Oak Creek Canyon / Slide Rock
  - West Fork Oak Creek Trailhead
- Possible Future Transit Connections:
  - Cottonwood Area Transit: Connecting Cottonwood to Sedona via the Village of Oak Creek
  - Yavapai-Apache Transit: Connecting Camp Verde to Sedona via the Village of Oak Creek
  - Mountain Line: Connecting Flagstaff and Sedona via SR 89 A

# STREETS

► **Policy 6.12 - Upgrade Sedona’s major roads into “Complete Streets” that are designed for safe use by all modes of travel.**

To increase the number of people choosing not to drive, streets need to be designed to meet the needs of all types of travel, as illustrated in the diagram below. This does not mean changing every street in the city, as it is not necessary on most neighborhood streets. An assessment should be done to prioritize which streets are most in need of upgrades.

► **Policy 6.13 - Explore potential street connections that connect neighborhoods while maintaining the safety and integrity of the neighborhoods.**

Sedona’s street network was developed as subdivisions were incrementally approved with no connectivity between. As a result, nearly all neighborhood traffic is funneled to SR 89A or SR 179. This is a significant safety concern if there is an emergency and only one outlet exists for a neighborhood.

Street connections can be strategically designed to minimize and slow traffic. If there are concerns about too much traffic through a neighborhood, the connection can be one-way; the design of the road can reduce speeds. One alternative is to designate a gated route for bike/pedestrian use that can be opened to vehicles during an emergency.

### Street Connectivity

Advantages of a well-connected street network:

- Emergency evacuation alternatives
- Distributes traffic across the network
- Improves walking/ biking
- Allows more direct access between destinations
- Can reduce travel distances
- Provides more route options

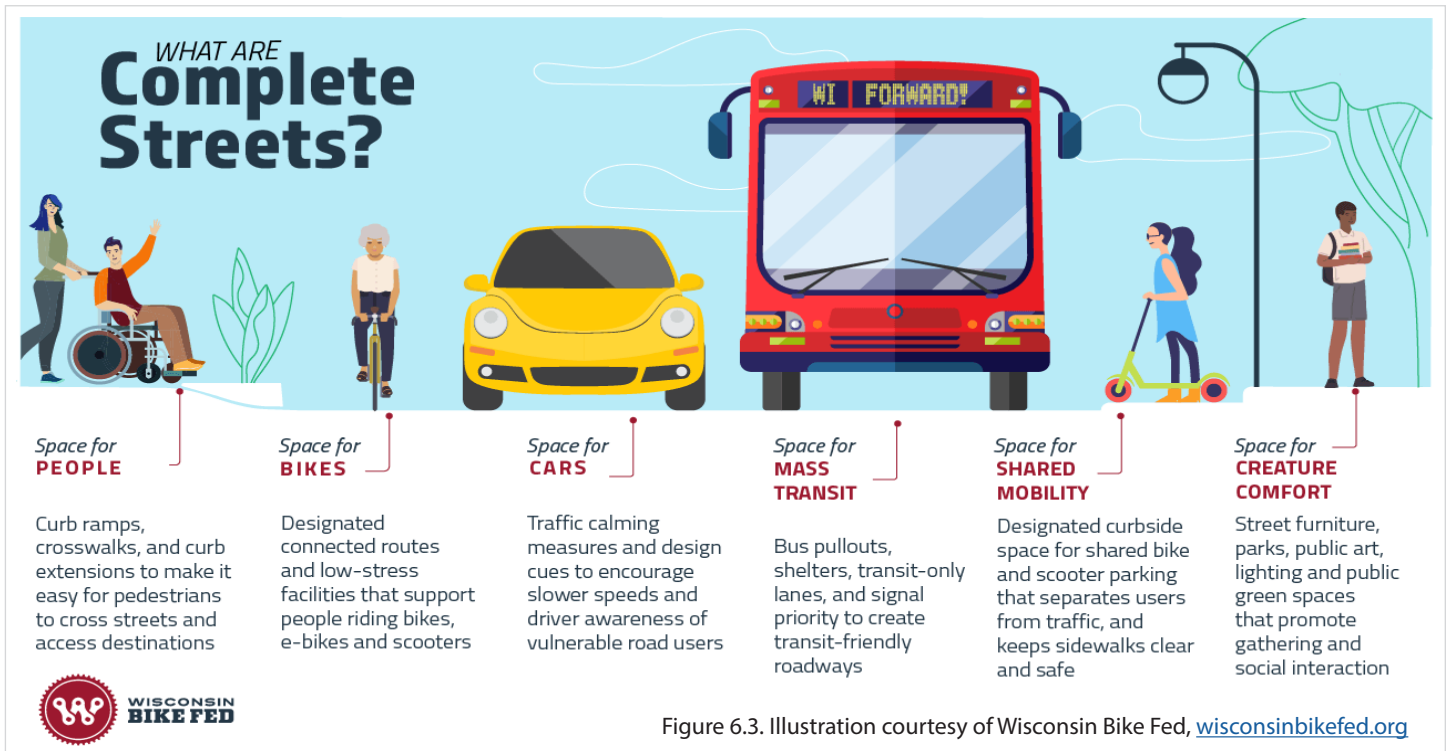


Figure 6.3. Illustration courtesy of Wisconsin Bike Fed, [wisconsinbikefed.org](http://wisconsinbikefed.org)

## WEST 89A

► **Policy 6.14 - Improve the safety and streetscape of W 89A by reducing curb-cuts and driveways, adding landscaping, and widening the sidewalk and bike-lane.**

Ask any local driver, pedestrian or bicyclist about their experiences on W 89A - everyone has had an unpleasant or hazardous experience! Streetscape refers to the area and features along a street, such as sidewalks, trees and landscaping, lighting, benches, bus stops, etc. Benefits of good streetscape design: improved safety, beautification, walkable, bikeable, comfortable, interesting, and functional.

► **Policy 6.15 - Work with developers and property owners to improve connectivity between commercial properties on W 89A.**

There are many shopping centers, shops, and restaurants that are not connected, where you can't go from one parking lot to the next.

► **Policy 6.16 - Explore transfer of W SR 89A and SR 179 within city limits from State to City jurisdiction.**

West 89A is a State highway, which limits what the City can do to make improvements. Changes to the road right-of-way including signage or sidewalks must be vetted and approved by the State. If the City did control the highway, it would be responsible for the roadway - funding for maintenance improvements projects, and additional resources to manage it.

The benefits of city control include improving the safety and experience for walking and biking; landscaping and streetscapes; and working directly with property owners and developers to make improvements. As an alternative or interim measure, the [GO! Plan](#) and [Transportation Master Plan](#) recommend installing mid-block, signalized crossings designed for safe crossing by pedestrians and cyclists, rather than adding a median and roundabouts.

### Did You Know?

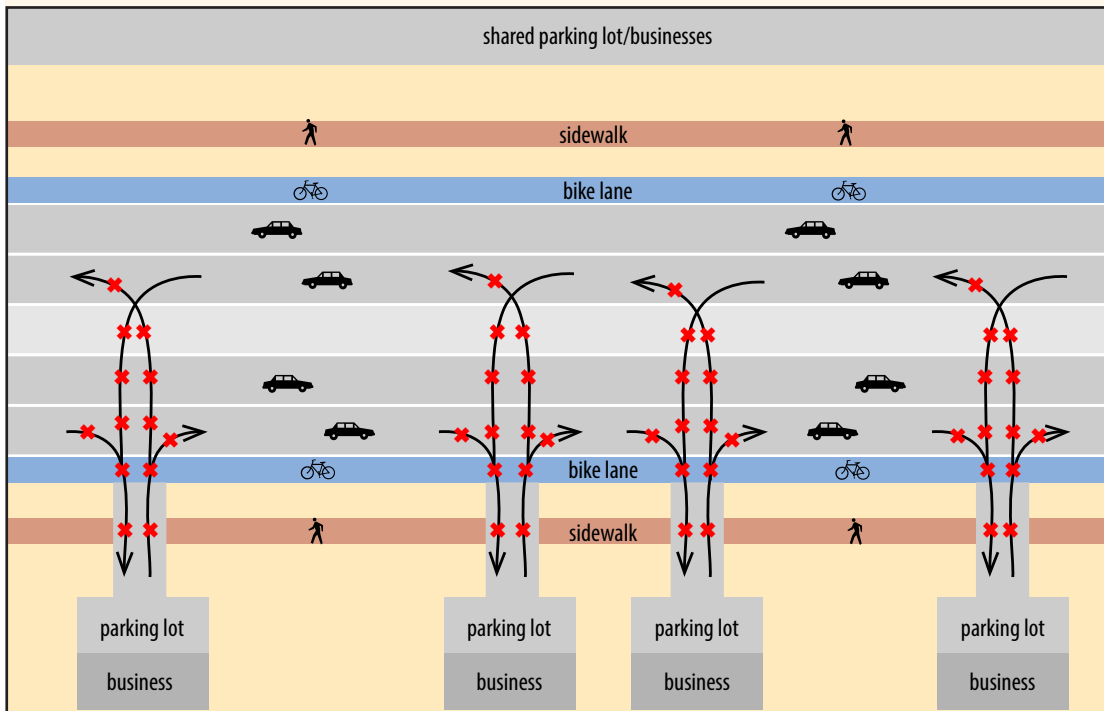
- 7 traffic signals (stoplights) added to W 89A since 1991
- Arizona Department of Transportation's spacing guidelines of one signal per 1/4 mile does not allow for additional signals in West Sedona
- 89A was upgraded to a four-lane highway between Sedona and Cottonwood in 2002
- As part of that project a median and wider sidewalks added from Juniper Drive to west of Upper Red Rock Loop Road

### Street Safety for Everyone

The graphic below illustrates all of the potential conflict points (each represented by a red “x”) that may be encountered if you are driving, walking, or biking on W 89A. There are a variety of improvements that can be done to minimize risks, such as:

1. Reducing curb cuts/driveways
2. Connecting parking lots
3. Locating driveways on side streets instead of W 89A
4. Replacing center lanes with medians
5. Converting intersections into roundabouts

Figure 6.4. Improving Safety for All Modes



## STATE ROUTE 179

SR 179 has seen significant changes over the years. Starting as a simple dirt road, it was a paved, 2-lane highway until 2010. In 1996, Arizona Department of Transportation (ADOT) proposed rebuilding the highway as a 4-lane design. The community strongly objected to the design due to concerns that it did not reflect Sedona's values around environmental stewardship, sense of place aesthetics, and viewshed protection. The community organized and in 2003 ADOT began a new public planning process for design of the "Scenic Byway." In 2010 construction was completed.

### ► **Policy 6.17 - Alleviate congestion around The Y, Schnebly Hill/179 roundabout, and the Brewer/89A roundabout.**

Originally proposed in 1996, several studies have recommended an extension of Ranger Road to W 89A, replacing the Brewer roundabout, as another measure to alleviate traffic backups at The Y. This project was in the design phase in 2023. The roundabout would also connect to the Forest Rd extension, under construction in 2023.

#### **Brewer Roundabout**

- 1996 proposal for extending Ranger Rd to a roundabout on 89A
- 2008 ADOT builds a roundabout at Brewer/89A instead of extending Ranger to a new roundabout
- 2018 Transportation Master Plan recommends the Ranger roundabout
- 2023 Ranger roundabout in the design phase



# UPTOWN

Over the last ten years, the City’s capital improvements program has been focused on improving traffic flow in Uptown. Some of the projects underway or completed:

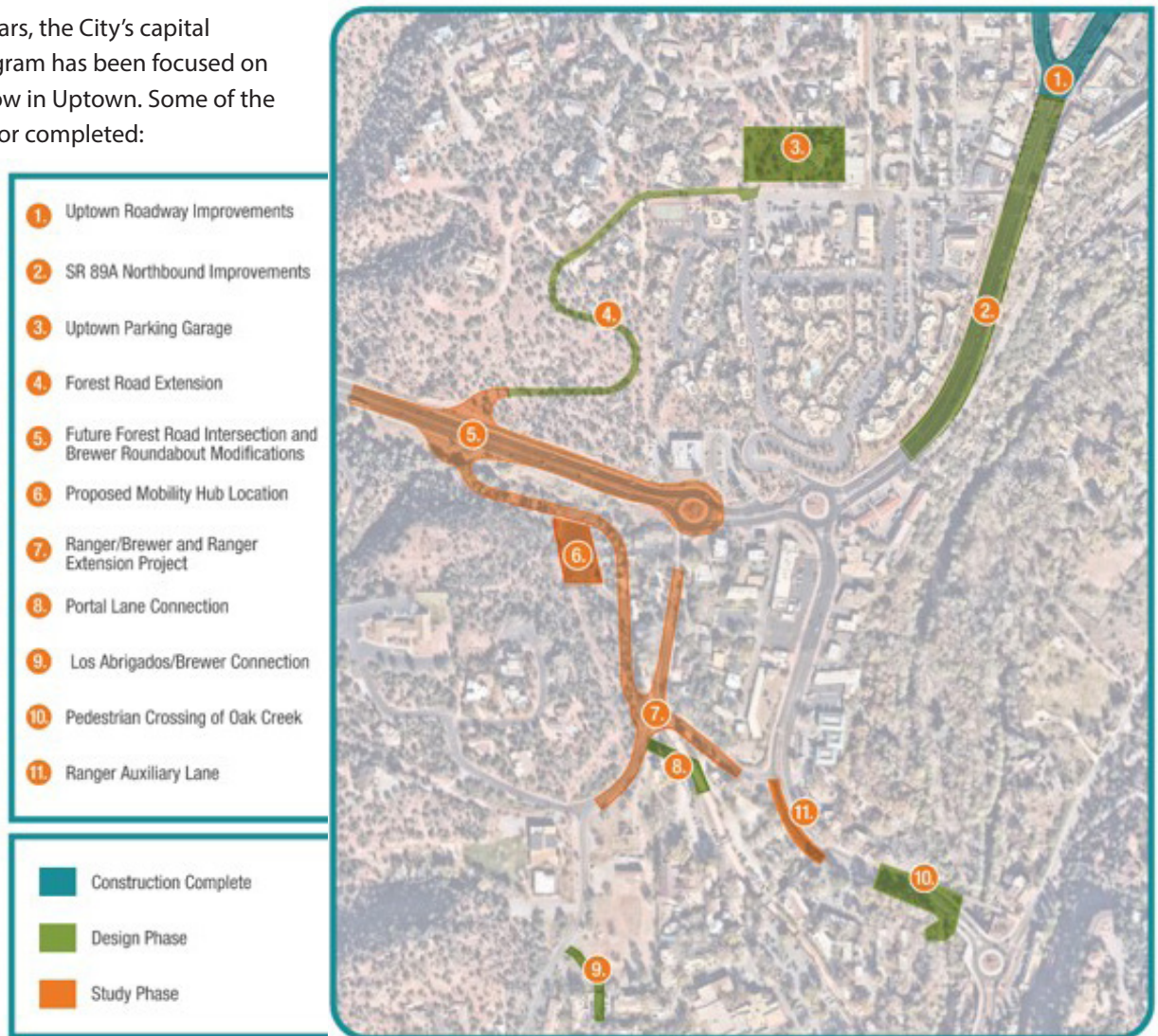


Figure 6.5. Map of Uptown projects that are complete, being designed, or in the study phase.

### 2020 Main Street Improvements

80% reduction in traffic congestion on 89A after building a median divider/barrier, 2 southbound lanes, 2 roundabouts, and the new Owenby Rd.

### 2022 Northbound Improvements

18% efficiency improvement in traffic and pedestrian movement from the Amara Lane Intersection Project.

### 2023-24 Northbound Improvements

50% improvement is expected after adding a left-turn lane, two northbound lanes, and pathway between The Y and Forest Road.

► **Policy 6.18 - Develop an integrated area plan that addresses circulation, parking, neighborhoods, and land use for the greater Uptown area.**

In 2020 the Uptown Community Focus Area (CFA) Plan was completed and brought to City Council where they chose to put it on hold until the Community Plan update was complete. The draft plan included circulation recommendations, including streets, parking, and bicycle/pedestrian improvements. This can be the basis of a more comprehensive effort that goes into more depth on circulation issues.



# PARKING

More and more cities and towns in the U.S. are moving away from minimum parking requirements to promote walkability, free up space, reduce affordable housing costs, and other redevelopment opportunities. Although this type of parking reform may not work everywhere, the City should investigate removing or reducing minimum off-street parking requirements for properties in commercial, mixed-use areas, and multi-family areas with the potential for significant pedestrian and transit access.

► **Policy 6.19 - Evaluate potential alternatives, incentives, and changes to the Land Development Code off-street parking requirements.**

An example of the need to address this issue is that the City parking standards are applicable to all commercial projects and do not differentiate between an Uptown versus a West Sedona project need.

► **Policy 6.20 - Improve Uptown parking by increasing capacity, consolidating, sharing, and improving access to parking and transit.**

Beginning in 2005, the City began studying the parking needs in Uptown and the SR 179 commercial area, most recently completing a parking assessment in 2019. In 2020 the City acquired property and began the design of a parking garage on Forest Road in Uptown. A second siting analysis was completed in 2023. The analysis concluded that:

- Parking consolidation, preferably adjacent to a collector road, would alleviate traffic congestion on local and other Uptown roadways.
- The location of the parking consolidation should be placed on the southwest end of Uptown due to 85% of the trips originating from the west and south.
- Consolidated lots should be located within 0.4 miles of the end destination to improve walkability and bikeability in the Uptown area.
- A complete signage program is needed to better inform and direct tourists.

**UPTOWN PARKING ALTERNATIVES ANALYSIS, 2023**

At one of the stakeholder workshops for the Uptown Parking Alternatives Analysis, the following summarized recommendations were made to the City:

- Prioritize safety for all modes and preserve resident and emergency vehicle access & egress
- Improve Uptown district walkability, bikeability, and ADA access and promote transit and micro-mobility opportunities
- Make public parking easy to find and navigate
- Right-size public parking in the context of other infrastructure and access investments
- Expand public paid parking and formalize an employee parking permit

**► Policy 6.21 - Encourage the use of shared parking agreements.**

This could be between private property owners and businesses, or between public and private use. This often works well when the times of use don't overlap, such as an office open during the day and a restaurant open in the evenings. One example is an agreement for public parking at a church, except during church services. Shared parking could be one tool to address the need for trailhead parking.

# CIRCULATION ACTIONS

1. Develop Sedona's multimodal system by making progress on all the Sedona in Motion, including those identified in other plans such as the GO Sedona Pathways Plan and the Sedona Transit Implementation Plan. Projects include the following:
  - Using advances in technology to improve the functionality of the circulation, parking, and transit system.
  - Improve communication about the purpose and progress of the SIM program, and how to be part of the "SIM Solution", including an online dashboard about the status and progress of each SIM project.
  - Pursue sustainable funding sources for the continued development and operation of Sedona's public transit system.
  - Complete implementation of the Wayfinding Sign Plan.
  - Conduct a street connection feasibility study that evaluates and prioritizes potential connections for vehicles and/or bike/pedestrian use.
  - Extend Ranger Road to a new roundabout at 89A, replacing the Brewer roundabout.
  - Alleviate congestion at the Tlaquepaque crosswalk and Schnebly/179 roundabout.
  - Complete Uptown northbound improvements on N 89A between The Y and Forest Rd.
2. Establish project review standards to ensure City infrastructure projects align with City plans, best practices, and the Land Development Code.
3. Expand the scope of the Uptown Community Focus Area Plan to include more detailed multimodal circulation and parking recommendations.
4. Develop an action plan to improve safety for walking, biking, and using transit. This may include the following: a "Complete Street" safety assessment to prioritize improvements; and in conjunction with ADOT, evaluate options for improving W 89A through West Sedona.
5. Evaluate off-street parking requirements during the Land Development Code update process that will include public and stakeholder input.
6. Develop a city-wide parking plan that incorporates land use, transit, and circulation, guided by Community Plan goals.

# 7. ENVIRONMENT & SUSTAINABILITY

## Chapter Contents:

- » Overview
  - Environment & Sustainability Key Issues
  - Synopsis 2013-2023
- » Recommendations
  - Open Space
  - Oak Creek
  - Recreation Management
  - Resiliency
  - Conservation
    - Water
    - Wastewater
    - Energy
  - Innovative Building
- » Environment & Sustainability Actions

## ENVIRONMENT & SUSTAINABILITY GOAL

*As responsible stewards of the natural environment, Sedona maintains a lasting water supply, healthy ecosystems and the ability to adapt to changing conditions.*

# OVERVIEW

## ENVIRONMENT & SUSTAINABILITY KEY ISSUES

- Threat of wildfire: Sedona is designated an At Risk Community for wildfire by the Arizona Department of Forestry and Fire Management
- Concerns about limited emergency evacuation routes
- Environmental impacts from recreation such as off-trail use, parking overflow, and OHVs
- OHV noise and traffic through neighborhoods
- Permanent alteration of the landscape due to construction that prioritizes cost over environmental protection
- Aging water and wastewater infrastructure
- The rapid spread of the highly invasive Tree of Heaven (*Ailanthus altissima*)
- Changing climate patterns, such as higher temperatures, more intense storms, and drought ([International Panel on Climate Change 2023 Report](#))

## SYNOPSIS 2013 - 2023

- 2017: Wastewater Master Plan updated
- 2019: Created City Sustainability Program, with 3 full-time employees as of 2023
- 2020: [Municipal Sustainability Plan](#) completed. (2013 Community Plan Action Item E.7)
- 2021: [Climate Action Plan](#) completed (2013 Community Plan Action Item E.7)
- Adopted the International Energy Conservation Code (IECC). (2013 Community Plan Action Item E.5)
- 2023: [Evacuation and Re-entry Plan](#) added to the [Emergency Operations Plan](#)

# OPEN SPACE

The City's open space inventory comprises an impressive 52% open space within City limits. This was a point of pride and defining feature of the newly incorporated city. However, as the city approaches build-out, more innovative strategies will be needed to maintain public open space.

► **Policy 7.1 - Partner with the Forest Service to ensure National Forest lands within City limits remain public open space and not exchanged for private development.**

49% of land within the city limits is National Forest. This is the realization of one of the city's original goals outlined in the first Sedona Community Plan in 1991. In 1998, the Forest Service amended the 1987 Forest Land Management Plan to protect National Forest lands within and around Sedona (known as Amendment 12). This was an important accomplishment considering there was a Forest Service proposal to exchange several tracts of National Forest to allow for future development. In subsequent plans, the Forest Service continues to restrict land exchanges in the Sedona area.

► **Policy 7.2 - Encourage development projects to preserve natural areas.**

Properties with significant natural resource values such as the riparian habitat of Oak Creek should be preserved and maintained in a natural state. Development should also take into consideration designing a project to preserve scenic views of the site visible from highways, scenic vistas, and gateways into the community. One method of accomplishing this is with cluster development that concentrates buildings in a smaller area in order to retain the remainder of the site as protected open space.

► **Policy 7.3 - Support the retention of open space between communities, especially along W 89A between Cottonwood and Sedona.**

This is a recommendation from previous regional planning efforts that saw the value of retaining open space between Verde Valley communities. The majority of this corridor is National Forest, however there is land that could be developed, such as State Trust Land, private property, and City of Sedona owned property associated with the Wastewater Treatment property. Future development of this property in particular should be carefully evaluated, with consideration given to Community Plan recommendations.

### SEDONA OPEN SPACE

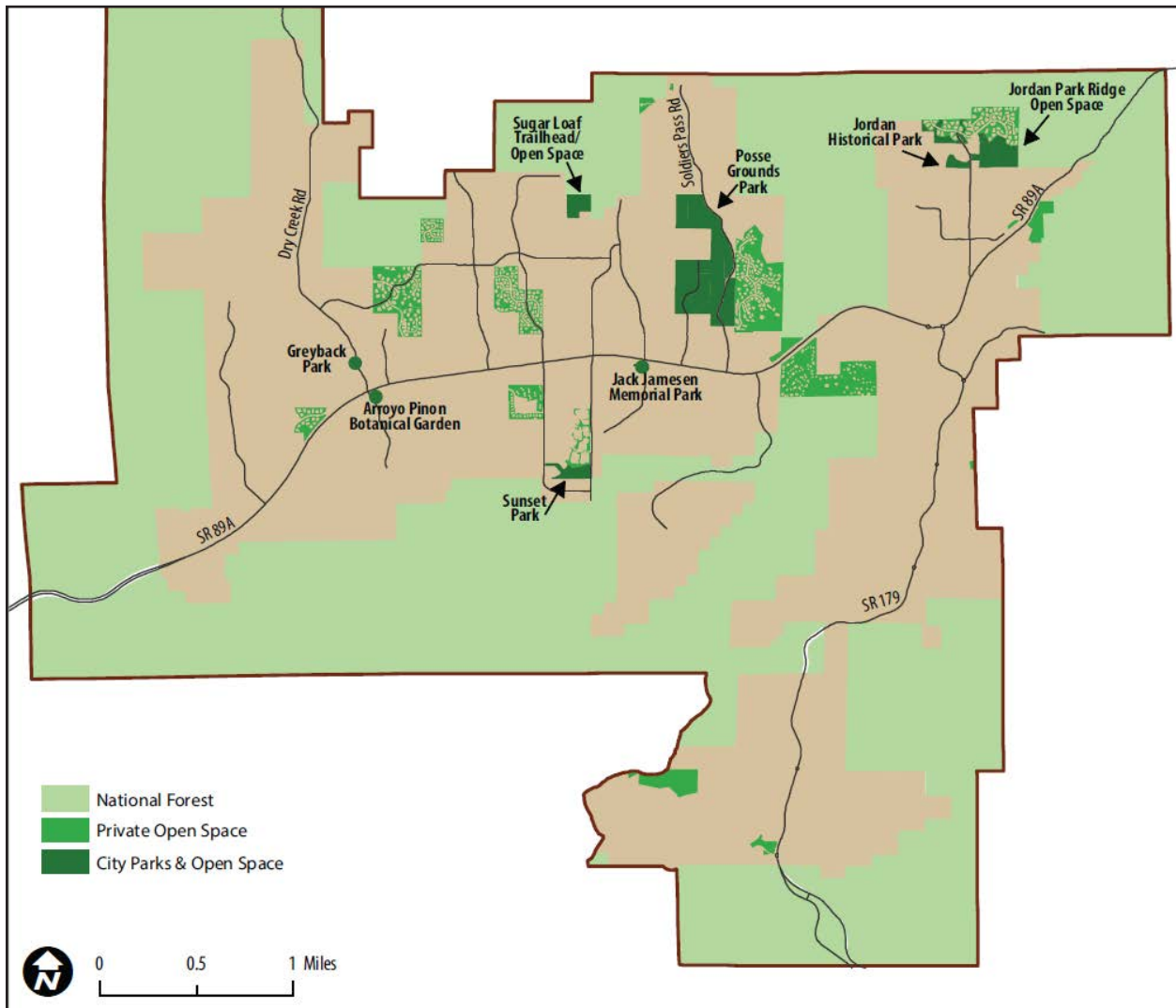


Figure 7.1. Dedicated open space and public land in the City of Sedona

#### Open Space Inventory

Total Acres: 6,069

- National Forest 5,736 acres
- Private Open Space 243 acres (such as Homeowners Associations dedicated open space tracts)
- City Parks & Open Space 126 acres
  - Posse Grounds Park 79 acres
  - Jordan Park Ridge/Glen 25 acres
  - Sugar Loaf Trailhead 9 acres
  - Sunset Park 7 acres
  - Jordan Historic Park 5 acres
  - Ranger Station Park 3.5 acres
  - Jamesen Park 0.4 acres
  - Arroyo Pinon Botanical Garden 0.2 acres
  - Greyback Park 0.1 acres

# OAK CREEK

Oak Creek is one of the reasons people settled in what later became known as Sedona. The waters of Oak Creek supplied drinking water, and irrigation for crops and orchards. There are still remnants of those days, such as pumphouses and irrigation ditches. Today, the only way to visit Oak Creek within city limits is to stay at one of several resorts on the creek, and the remainder of the creek is private property - mostly houses.

► **Policy 7.4 - Preserve and restore the Oak Creek corridor floodplains and riparian areas from the impacts of development.**

The majority of Oak Creek flows past resorts and houses along the banks of the creek. In some cases, buildings or improvements like decks and patios are just feet away from the water. There are several areas of abandoned hotels and RV parks on the creek (privately owned), which are being marketed for development. There is time to ensure the riparian areas are preserved and buildings are built outside the floodplain. If these properties must be developed (private property owners have the right to build), it can be done in an environmentally sensitive way.

► **Policy 7.5 - Protect the water quality of the Oak Creek watershed.**

The causes of contamination include waste from wildlife, humans, dogs, livestock, septic systems, recreation, and agriculture. Stormwater can carry pollutants such as pesticides and oil, as well as trash and other debris. Efforts are underway, led by the Oak Creek Watershed Council, to counteract these impacts through education and outreach, and through projects such as installing more public toilets, trash receptacles, and dog waste stations.

*"[It's important to preserve] our bountiful natural assets for now and future generations, including but not limited to water conservation, and the protection of Sedona's surrounding land and its forests over which we have some control."*

*- Public comment*



# RECREATION MANAGEMENT

Natural areas and neighborhoods need to be protected from the impacts of recreation, including noise, invasive plants/animals, dust, and pollution.

## ► **Policy 7.6 - Foster responsible recreation through educational messaging and wayfinding.**

Social media has led people to places not on designated trails nor endorsed by the US Forest Service. Educational messaging, signage, and marketing is improving, however more can be done to inform people how to recreate responsibly, where to go, how to get there, and directional signs on the trails. See Economy & Tourism chapter for more information.

## ► **Policy 7.7 - Engage in partnerships that work to protect and restore the environment from the impacts of outdoor recreation.**

Outdoor recreation is cross-jurisdictional (National Forest/City of Sedona) thus management must occur as a partnership process to continually improve management. To be most effective, it should also include businesses, non-profits, and the Chamber, including the many organizations that organize volunteers to help with fundraising and on-the-ground projects.

*"The large amounts of people treading through (or camping in, riding through, or driving through) the National Forest lands can degrade the ecosystem if not doing so respectfully."*

- Public Comment

**i** See [Economy & Tourism chapter](#) for more information.

## Did You Know?

### **Greater Sedona Recreation Collaborative (GSRC)**

Convened to address multi-jurisdictional outdoor recreation; includes agencies, residents, and commercial businesses. Now focusing on OHV use and damage mitigation in the Sedona area. Funded by Arizona State Parks and Trails, Coconino National Forest, City of Sedona, and other partners.  
[www.gsrc.org](http://www.gsrc.org)

### **Sedona Red Rock Trail Fund**

An all volunteer, local non-profit dedicated to fundraising for the maintenance and enhancement of non-motorized trails in partnership with the Forest Service.  
[www.redrocktrailfund.org](http://www.redrocktrailfund.org)

# RESILIENCY

It is increasingly important for leaders and the community to understand how to adapt and be prepared to handle disruptive events such as wildfire, flooding, severe drought, etc.

## What is a Resilient Community?


“Community resilience is the ability of a community to prepare for anticipated natural hazards, adapt to changing conditions, and withstand and recover rapidly from disruptions.”  
(Federal Emergency Management Agency)

### ► **Policy 7.8 - Increase community capacity and awareness of climate change risks and impacts.**

Sedona is facing what is likely to be a hotter and drier future with more wildfires and subsequent increase in severe flooding, as seen in the [International Panel for Climate Change 2023 Report](#) and recent events. Awareness in the community is essential to make changes to protect the City and its natural environments into the future.

### ► **Policy 7.9 - Identify and target support for at-risk populations, including those who don't speak or read in English.**

According to the U.S. Department of Health and Human Services, at-risk populations are “people with access and functional needs (temporary or permanent) that may interfere with their ability to access or receive medical care before, during, or after a disaster or public health emergency”. The City of Sedona has several plans that address the agency and partner’s roles in preventing, preparing for, and recovering from emergency situations or hazard events however the communications have not always been accessible to everyone.

 City of Sedona

[www.sedonaaz.gov/emergencymanagement](http://www.sedonaaz.gov/emergencymanagement)

► **Policy 7.10 - Implement Firewise USA® practices and programs in partnership with the Sedona Fire District , Coconino National Forest, residents and other property owners.**

The Firewise USA® recognition program provides guidance to homeowners, neighborhoods, and communities on what can be done to reduce wildfire risk. As a homeowner, examples are to establish clear zones around your house, and use fire resistant landscaping and building materials. To be a Firewise Site, a set of voluntary criteria must be met annually including convening a volunteer committee, conducting an assessment of wildfire risk, and completing recommended actions such as removing yard debris. As of 2023, there was only one Firewise USA® site in Sedona:

- Cottages at Coffeepot Homeowners Association

**i** Firewise Communities  
[www.firewise.org](http://www.firewise.org)

**i** See Innovative Building section for more on wildfire risk reduction.

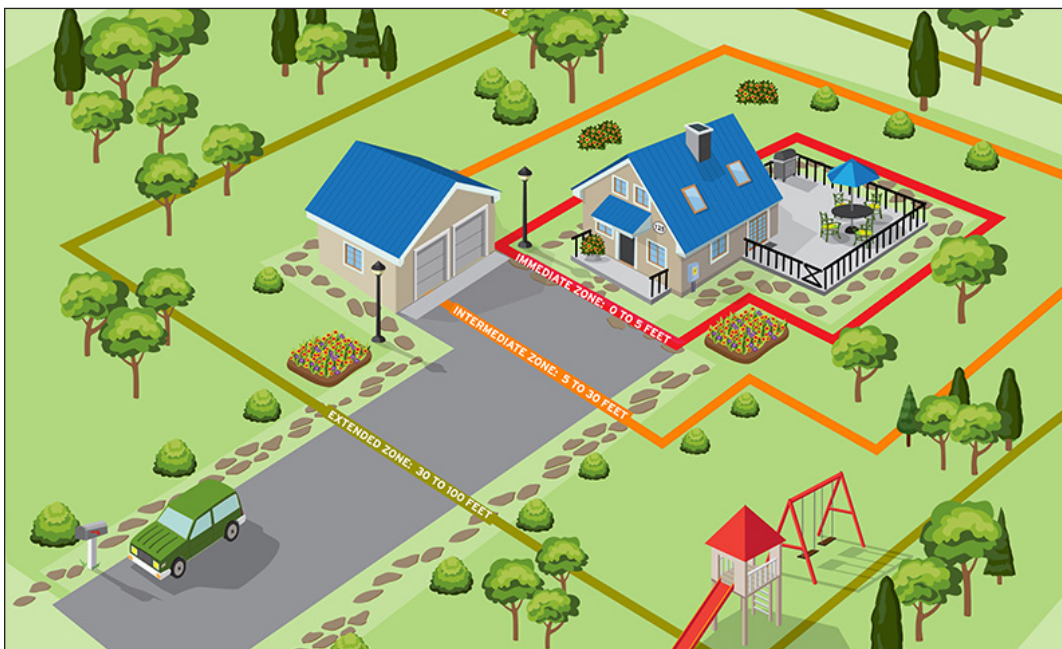


Figure 7.2. Clearance zones around homes and structures.

Source: National Fire Protection Association.  
[www.nfpa.org](http://www.nfpa.org) or [www.firewise.org](http://www.firewise.org)

# WATER CONSERVATION

The majority of the potable water supply for Sedona is from groundwater wells owned and managed by the Arizona Water Company, and to a lesser extent the Oak Creek Water Company.

► **Policy 7.11 - Reduce residential and commercial water use.**


The Arizona Water Company has partnered with the City and others to develop a Joint Water Resource Program and Integrated Demand Management Program. This will guide water conservation efforts, education, and assistance, especially for residents, businesses, and large resorts. Finding and resolving water leaks is one method of reducing water use, which can happen with landscaping irrigation leaks or malfunctions, or dripping faucets in houses. It can also happen as a result of aging water system, the needs to be addressed by the water providers, Arizona Water Company and Oak Creek Water.

► **Policy 7.12 - Participate in regional and statewide water planning efforts.**

To ensure an ample supply of clean water for future generations, a multi-pronged regional approach is essential. Verde Valley communities, including Sedona, have formed partnerships to address various water resource issues.

# WASTEWATER

The transport, treatment, and use of wastewater is an important component to ensuring a sustainable water supply and healthy ecosystem.

 See Wastewater Master Plan. NEED LINK

► **Policy 7.13 - Address aging wastewater infrastructure.**

The City established its sewer system in 1993, and while many areas have been converted from septic systems, the sewer infrastructure is now aging and components will need to be replaced and/or upgraded to ensure proper containment and transport of effluent.

► **Policy 7.14 - Reuse treated wastewater (effluent) for beneficial use and to recharge groundwater.**

The City currently disposes of treated effluent in several ways: wastewater ponds, spray irrigation, injection wells, reuse for fighting wildfire, and in construction projects. The challenge in reusing effluent from the City's Wastewater Treatment Plant at a larger scale is distributing and pumping the water back to the city, 4 miles uphill at a significant cost.

# ENERGY CONSERVATION

Reducing energy use and increasing energy efficiency is a goal for all commercial, residential, and public facilities.

► **Policy 7.15 - Greenhouse gas emissions and energy use are reduced in all city operations, procedures, and procurement.**

Conserving energy will reduce costs while decreasing the use of fossil fuels and resulting pollution. Improving the efficiency of buildings can reduce the need for heating and cooling and result in lower utility bills.

► **Policy 7.16 - Maximize renewable energy generation and storage capacity, such as EV chargers, solar panels, etc.**

Solar power is already in use by many homes and businesses. The City's Sustainability Program is providing resource assistance to locals interested in solar photovoltaic (PV) systems for their homes or businesses.

► **Policy 7.17 - Educate, support, and assist property owners with converting exterior light fixtures.**

The City of Sedona was designated the world's eighth International Dark Sky Community in 2014 by the International Dark-Sky Association through a partnership with Keep Sedona Beautiful.

Sedona amended the Land Development Code § 5.8 in 2023 to address older, non-compliant, exterior lights.

*"All lighting that does not conform to all provisions of this Code shall be brought into compliance by January 1, 2028. Until this time, no modification or replacement shall be made to a nonconforming fixture unless the fixture thereafter conforms to the provisions of this Code, except that identical lamp replacement is allowed"*

## What is Dark Sky Lighting?

Responsible outdoor lighting is:

- Useful - All light should have a clear purpose
- Targeted - Light should be directed only to where it's needed
- Low level - Illumination should be no higher than necessary
- Controlled - Light should be used only when it is useful
- Warm-colored lighting
  - Dark Sky International: [www.darksky.org](http://www.darksky.org)

*"[Our focus is on an] equitable transition to clean, reliable, and affordable energy. Shifting our building energy sources from fossil fuels to clean electricity sources like wind and solar will be critical in meeting our long-term goals [to reduce emissions by 50% by 2030]. Making this shift will require that we continue to reduce building energy demand, introduce incentives for building electrification, and expand renewable energy and battery storage infrastructure."*

- Sedona [Climate Action Plan](#)

# INNOVATIVE BUILDING

Environmental stewardship is one of the core values of our community, thus it should be evident in the built environment, whether construction, infrastructure, or maintenance.

► **Policy 7.18 - Design and build all projects utilizing innovative, green building methods and materials**

Innovative building, or green/sustainable building, uses design practices and construction methods and materials responsibly and efficiently. This can result in lower operating costs, potentially less maintenance, and reduced local and global impacts. Examples:

- Efficient use of energy and water that may include passive methods or technology
- Healthy indoor systems with minimal pollutants
- Renewable or sustainable materials with minimal waste

► **Policy 7.19- Encourage, and in some cases require, new and redevelopment projects to include wildfire risk reduction measures in design and construction.**

The Sedona Fire District has a Wildland Urban Interface code that includes standards for design and construction of new developments. In 2018, the City's Land Development Code was modified (for example reducing the amount of required landscaping).

► **Policy 7.20 - Locate and design buildings\* to maintain, restore, or enhance natural areas with minimal disturbance.**

A healthy environment is reliant on maintaining the natural functions of the ecosystem that native plants and wildlife depend on. While preserving the landscape in its natural state is preferred, landscaping with native plants can reduce water consumption while providing wildlife habitat.

\*Projects may be City of Sedona or development on private land

## Did You Know?

Keep Sedona Beautiful was instrumental in developing the city's first Land Development Code which relied on their design guidelines for an environmentally sensitive land ordinance and design review manual. Elements of these have since been incorporated into the current Land Development Code.

<https://www.keepsedonabeautiful.org/>



► **Policy 7.21 - City properties should set the example for designing for a sense of place with environmentally responsible and innovative building and landscaping projects.**

City parks, City Hall, street landscaping, and capital improvement projects are ideal for demonstrating environmental stewardship. These are opportunities to educate the public and developers on the value of planting with native plants as well as appropriate low-water use, adaptive plants.

► **Policy 7.22 - Manage stormwater to reduce the impacts of flooding while retaining the environmental benefits of stormwater by using green infrastructure design.**

Also known as low impact development, the intent is to capture the water on-site to allow infiltration rather than funneling it elsewhere. Just as in nature, plants and rocks can slow the movement of stormwater, recharge groundwater, and discourage erosion. Simultaneously, that slowed stormwater can irrigate landscaping and provide wildlife habitat that blends with the natural environment. This may be as simple as adding a curb cut that allows water to collect in a median or strip of landscaping between a street and sidewalk.

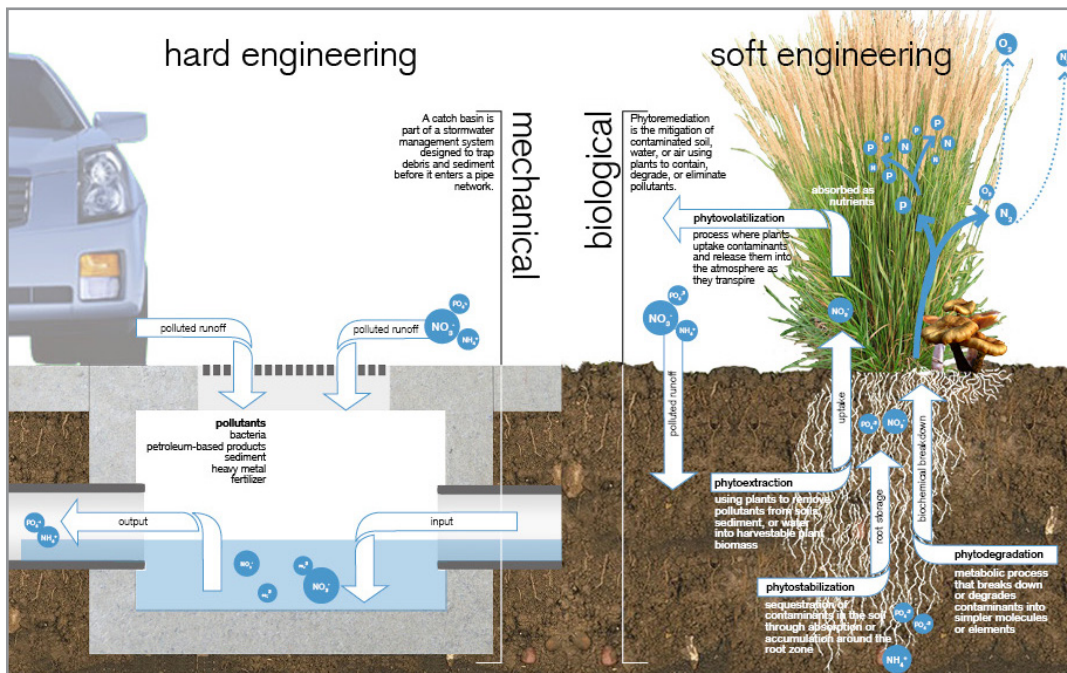


Figure 7.3. Low Impact Development - comparison of traditional vs natural solutions to stormwater management. University of Arkansas Community Design Center <http://uacdc.uark.edu/work/low-impact-development-a-design-manual-for-urban-areas>



# ENVIRONMENT & SUSTAINABILITY ACTIONS

1. Establish procedures to ensure emergency communications and materials meet accessibility standards and are in both English and Spanish.
2. Evaluate the Land Development Code for ways to reduce wildfire risk in the development project design.
3. Establish a citizen/stakeholder work group to strategize implementation of the Firewise Program in neighborhoods throughout the City.
4. Develop a wayfinding sign plan that includes trailheads and trails, partnering with the National Forest for a seamless cross-jurisdiction signage system.
5. Continue participation in the Greater Sedona Recreation Collaborative.
6. Support and partner with non-profit organizations dedicated to addressing the impacts of recreation on the environment.
7. Support and expand the stewardship initiatives of the Oak Creek Watershed Council, Friends of the Verde River, organized groups, and property owners.
8. Pursue working with property owners and developers to ensure future development preserves the Oak Creek corridor; including the potential for city acquisition for permanent protection.
9. Work with partners to develop an Oak Creek watershed plan that identifies ways to work with property owners to restore and protect the creek ecosystem.
10. Investigate strategies for either incentivizing or regulating water conservation measures, and addressing an aging water system.
11. Identify appropriate standards for water conservation that can be applied during the development review process.
12. Encourage water use audits to help identify water leaks and high use fixtures.
13. Implement a green building program that includes education, standards, and incentives coordinated with the Sedona building code.

14. Invest in community resilience hubs, which are places that support residents with coordinated communication, distribution of resources, and serves before, during, and after a natural hazard event. See [www.usdn.org/resilience-hubs.html](http://www.usdn.org/resilience-hubs.html)
15. Create landscaping guidelines for developers and residents that address preserving natural areas, native plants, and xeriscape practices.
16. Improve the City's capacity to incorporate natural resource management best practices in design, construction, maintenance, and operations.
17. Develop a resource guide and development standards for low impact development/ green infrastructure methods of managing stormwater.
18. Initiate partnerships to develop a city-wide weed management plan that includes business and resident education and volunteers.
19. Partner with Verde Watershed Restoration Coalition to expand invasive species education to Sedona.
20. Explore and implement incentives, rebates, and other ways that support energy and water conservation improvements.
21. Investigate additional public/private partnerships for water conversation.
22. Evaluate linking wastewater rates to water use to encourage water conservation.
23. Investigate waste management (trash hauling) alternatives that are more efficient and sustainable.

# 8. ECONOMY & TOURISM

## Chapter Contents:

- » Overview
  - Economy & Tourism Key Issues
  - Synopsis 2013-2023
- » Recommendations
  - Economic Initiatives
  - Tourism & Visitor Management
- » Economy & Tourism Actions

## ECONOMY & TOURISM GOAL

*Sedona's economy is resilient and sustainable, and tourism is managed to ensure a healthy balance between environmental stewardship, community quality of life and visitor experience.*

# OVERVIEW

## ECONOMY & TOURISM KEY ISSUES

- Lagging transportation and infrastructure
- Inadequate healthcare facilities with lack of available physicians
- Inadequate assisted living facilities motivating aging residents to leave
- Lack of available employees
- The increasing number of visitors to Sedona leading to damage to the National Forest, reduction in community quality of life and sense of community, and increased traffic and parking challenges
- The Instagram effect of unmanaged advertising to scenic hotspots, often leading visitors to locations unable to handle the traffic, parking, waste, and foot/bike traffic
- Conversion of residential housing into short-term vacation rentals (STR) has increased the number of relatively unregulated “hotel rooms”
- Safety issues as a result of the State’s limitation on a city’s ability to regulate, as well as a proliferation of “work without a permit”

*“[Find] ways to keep both the tourists and the residents happy. Those who live here need to understand the importance of our visitors, and also need to have quality of life as a resident.”*

*- Public Comment*

## SYNOPSIS 2013 - 2023

- 2010: Instagram social media platform launched and grew to become one of the most significant influences on the travel industry
- 2013: Residents alerted City Council to their concerns about the proliferation of OHV rentals on city streets
- 2017: The use of residential housing for short-term vacation rentals became legal as the State of Arizona overturned the City’s prohibition on rentals of less than 30-days
- 2023: The City of Sedona and the Chamber of Commerce end their long-standing agreement
- 2023: The City of Sedona launched a new Tourism Program and became the designated Destination Management and Marketing Organization (DMMO) and as such, an official partner of the Arizona State Office of Tourism

# ECONOMIC INITIATIVES

Sedona's future lies not only in building a sustainable regional economy, but also in building a more diversified, and thus resilient economy.

► **Policy 8.1 - Engage with Verde Valley communities to build a resilient and sustainable regional economy.**

Building a sustainable regional economy will require that Sedona participate with partners in the Verde Valley region such as public agencies, non-profits, coalitions, and groups like the Verde Valley Regional Economic Organization (VVREO). These partnerships can collectively develop and provide programs and support services for all sectors of our region's economy.

► **Policy 8.2 - Continue efforts to grow a more diversified economy in Sedona.**

In order to diversify the economy over the next 10 years, two things need to be accomplished: the workforce will need affordable housing, and businesses need broadband. Housing should be addressed at both the local Sedona level and the regional Verde Valley to meet projected housing needs. As of 2023, the City has been actively working on bringing broadband to Sedona.

► **Policy 8.3 - Prioritize affordable housing to attract and retain employees in Sedona.**

Sedona has always found it challenging to attract and retain employees due to the higher than average cost of living. Since the COVID Pandemic, those issues have been exacerbated by a shortage of employees nationwide. The increase in short term rentals has also decreased the availability of long-term rental properties.

 See [Housing chapter](#)

*"The Verde Valley embraces a shared economic agenda. Government, business, land owners, developers, educators and civic leaders are united and mobilized to achieve measurable results. There is a team spirit to achieve the vision of economic prosperity. Collaboration between communities and regional organizations is second nature to ensure the integration of actions and investments to accomplish specific objectives."*

-Verde Valley Regional Economic Organization [Strategic Plan](#)

► **Policy 8.4 - Collaborate with regional partners and the healthcare industry to ensure the availability of medical providers in the Verde Valley.**

The number of healthcare providers, doctors, and dentists offices in Sedona has been decreasing over the years. This means that residents must go to Cottonwood, Flagstaff, Prescott, or Phoenix. Access to healthcare is a growing issue in smaller, more rural towns across the country. This is a regional problem that is best resolved by a coalition of neighboring communities working together.

► **Policy 8.5 - Work with public and private partners to build broadband, fiber optic infrastructure throughout the City.**

According to the National Digital Inclusion Alliance, in 2017 (most recent data available) residential access to broadband such as cable, fiber optic or DSL in Sedona was between 70-80 percent. Three broadband providers have speeds of at least 25 Mbps downstream / 3 Mbps upstream, which is considered reasonable standard for streaming. However, with the continuing growth of remote workers, Sedona will need to expand broadband coverage and encourage providers to increase their speeds in order to stay ahead of the technological curve and build a thriving economy.

► **Policy 8.6 - Support programs that assist local businesses, entrepreneurs, telecommuters, and home based workers.**

There is a need to work with the Chamber of Commerce, the Verde Valley Regional Economic Organization, and others to support the business community.

► **Policy 8.7 - Support business prosperity by connecting the community to local tourism businesses.**

Since tourism can fluctuate, a more resilient economy has strong community connections between local businesses and residents, who can help bridge that gap while also fostering a stronger sense of unity.

# TOURISM & VISITOR MANAGEMENT

There are two aspects to tourism and visitor management, one is focused on the marketing and messaging before people get here (they may see an ad or are planning a trip), and the other is visitor management during the time they are in Sedona. It is essential that both are addressed in coordination.

Visitor management must be incorporated into nearly all City programs: circulation (finding their way around town, traffic, parking, using transit), environment and sustainability (responsible recreation), community (neighborhood impacts), and housing (impacts of short-term rentals).

► **Policy 8.8 - Ensure resident's quality of life by taking a comprehensive, coordinated approach to visitor management to control the adverse impacts of tourism on our community.**

The way to boost community and quality of life is to carefully and strategically manage tourism. To succeed at serving the community, residents need to recognize that managing tourists is one way the City is supporting residents.

► **Policy 8.9 - Proactively manage and market Sedona as a destination that values community, the protection of the environment, and a positive visitor experience.**

In 2023, the long-standing contract with the Sedona Chamber of Commerce and Tourism Bureau was not renewed. This prompted the City to establish a new tourism marketing and management program. With the help of the new Tourism Advisory Board, the new program will focus on: Tourism Strategic Plan, brand/identity development, summer marketing campaign(s), and updating the Sustainable Tourism Plan.

## City of Sedona Tourism Program Launched in 2023

- Designated "Destination Management and Marketing Organization" (DMMO), an authorized partner of the Arizona Office of Tourism
- Hired Tourism and Economics Initiatives Coordinator
- Tourism Advisory Board established
- Created websites:
  - [ScenicSedona.com](https://www.scenicsedona.com)
  - [SunnySedona.com](https://www.sunnysedona.com)
- Enhanced messaging to Recreate Responsibly, Leave No Trace, etc.
- Began data collection and analysis of past and current visitation
- New business database with over 500 tourism-related businesses signed up in 2023. Businesses are featured on the new website and are eligible to receive leads and opportunities from the professional travel industry.

► **Policy 8.10 - Strive to find a balance between community quality of life and a healthy tourism economy, engaging both concerned residents and business owners in future decision making.**

There are impacts from tourism to the community that pose a challenge to Sedona including traffic and parking issues, lack of housing, seasonal lulls in patronage, and environmental degradation. Tourism must be managed to mitigate these challenges through proactive marketing efforts, educational campaigns for tourists, and strengthening connections between the community and local businesses.

► **Policy 8.11 - Ensure that destination marketing is strategic, targeted, and focused to better manage volume and distribution of visitation.**

The City will need to be strategic on what type of visitor is marketed to, when tourism is needed, while balancing the need for environmental stewardship, resident quality of life, and a healthy tourism economy. Partner with front-line stakeholders to ensure consistent and effective messaging.

► **Policy 8.12 - Promote responsible tourism with innovative messaging that is informative and useful to visitors.**

To be most effective, communicating with visitors needs to go beyond messaging focused on prohibiting (no parking), and more focused on helping educate visitors (here is where you can park).

**i** See [Environment and Sustainability chapter](#), Recreation section

*“There are too many visitors who have little awareness and concern about protecting the natural wonder that is Sedona. There are many places around the globe that make their visitor focus on ecotourism. I would like Sedona to take that approach with our future - we can provide education and shift our focus from wild and rowdy to a peaceful appreciation of the quiet, dark sky, arts, culture, and natural world.”*

*- Public Comment*



# ECONOMY & TOURISM ACTIONS

1. Continue to participate in partnership programs such as the Verde Valley Regional Economic Organization (VVREO).
2. Continue efforts to build affordable housing, in the city and regionally.
3. Follow through on efforts to bring broadband to Sedona.
4. Support initiatives and partnerships serving local businesses and community.
5. Develop a Tourism Strategic Plan that will outline the initial direction for the Tourism Program.
6. Develop Tourism Marketing Plan that will outline marketing goals on how and when to market such a fragile environment both from a landscape and community sentiment standpoint.
7. Develop a tourism branding plan that outlines what Sedona is as a destination and how to communicate this with the world.
8. Proactively enter the social media influencer culture to counteract the unintended consequences of social media, including partnering with established influencers.
9. Collaborate with other organizations, agencies and businesses to track tourist numbers and trends.
10. Strategically schedule events, activities, and marketing more broadly across the year to relieve congestion. See the [Community chapter](#).



# 9. IMPLEMENTATION

---

## **Chapter Contents:**

- » How the Plan is Implemented
- » Plan Adoption Administration
- » Plan Amendments
- » 2013 Community Plan Implementation
- » Implementation Policies
- » Implementation Actions

# HOW THE PLAN IS IMPLEMENTED

This portion of the Plan details how both the public and private sector contribute to turning the Plan into action. Over the next 10 years the Plan will influence other more specific plans, the Land Development Code, and Capital Improvements Programming.

## **COMMUNITY PLAN ACTION PROGRAM AND DETAILED PLANS**

Many of the actions proposed in this Plan call for more specific planning to further define how the goals, policies, and actions will be achieved. These more detailed plans may relate to particular geographic areas or topics, such as the West Sedona Corridor CFA.

## **LAND DEVELOPMENT CODE**

The City of Sedona Land Development Code contains zoning district regulations, subdivision regulations, procedural requirements, and development standards applicable to nearly all projects proposed by developers and builders. The provisions of the Land Development Code are to be consistent with and conform to the Community Plan and related specific planning. Upon completion of this Plan, there may need to be updates to the Land Development Code to reflect the Plan's recommendations, thus it is a key tool to implement the Plan.

## **PRIVATE SECTOR**

Many of the Plan recommendations are implemented with new development or redevelopment proposals that must conform to the City's Land Development Code. There also may be incentives identified in CFA Plans that can influence a project. Incentives may include flexibility on certain development standards provided in conjunction with benefits to the community.

## **CAPITAL IMPROVEMENTS PROGRAM**

The Plan also guides the preparation of the City's Capital Improvements Program (CIP), a ten-year plan that identifies the capital projects and equipment and infrastructure investments that will be made by the City along with the priority, projected costs and funding sources for each project. The CIP is updated annually by the City Council with public participation. As provided in Arizona State statutes, the Planning and Zoning Commission then reviews the CIP to determine the conformity of the proposed capital projects with the adopted Community Plan. The City Council then approves the CIP.

# PLAN ADMINISTRATION

## PLAN ADOPTION/RE-ADOPTION

As required under Arizona Revised Statutes (A.R.S.) 9-461.06, the adoption or re-adoption of a general plan (Sedona's "Community Plan") is subject to:

- Public participation procedures adopted by the City Council
- Approval by an affirmative vote of at least two thirds of the members of the Sedona City Council
- Updating at least once every ten years

## SPECIFIC PLANS

Community Focus Area Plans are Specific Plans. Specific Plans are addressed in A.R.S. Section 9-461.08 and .09 and provide more detailed planning to allow systematic implementation of the Community Plan through the use of detailed policy direction for smaller areas of the City. In addition to recommending appropriate locations for different land use types, Specific Plans may guide building locations, placement of public facilities and other issues appropriate to the area covered by the Specific plan.

A Specific Plan is incorporated into the Sedona Community Plan by reference and is considered as an implementation tool of the Sedona Community Plan. Specific Plans may be considered by the Planning and Zoning Commission and City Council at any time and are adopted by a majority of the City Council.

# PLAN AMENDMENTS

## MAJOR AMENDMENTS

As defined by A.R.S. 9-461.06, a major amendment is defined as a substantial alteration of the City's land use mixture or balance as established in the Community Plan's Land Use Element, and may be specific to Future Land Use Map changes. It is up to the City to develop criteria that meet this definition. The State requires that all proposed Major Amendments to the Community Plan:

- Are subject to public participation procedures adopted by the City Council
- Shall be presented at a public hearing within 12 months of when the proposal is made
- Be approved by an affirmative vote of at least two thirds of the members of the City Council
- May be initiated by the City or requested by the private sector

## MAJOR AMENDMENT CRITERIA

The following criteria will be used to determine the need for a Major Amendment. These criteria do not apply to amendments proposed in conjunction with a Specific Plan (Community Focus Area Plan). Amendments in conjunction with these Specific Plans are all considered Minor Amendments.

1. A change to the Future Land Use Map where:
  - The land area is greater than 5 acres for changes to a non-residential land use designation, or
  - There is a change in the land use designation from: Any land use to Commercial/Lodging
2. A modification to the text of the Community Plan that proposes:
  - A change in the density ranges within the residential land use designations or a change in the intensity of use in any land use designation
  - Substantial changes to goals and policies in the Land Use or Housing chapters
  - Addition of a new land use designation

## MINOR AMENDMENTS

Minor Amendments are changes other than a new or re-adopted Plan or Major Amendment. Minor Amendments may be considered and approved at any time by the City Council. Minor amendments are subject to public participation procedures adopted by the City Council.

## ONGOING REVIEW

The City should conduct periodic reviews of the Community Plan to evaluate the following.

- Specific Action Items
- Potential Amendments
- Actions called out in A.R.S. Section 9-461.07, such as the preparation of an annual report on the progress of applying the Plan

# 2013 PLAN IMPLEMENTATION

The following are highlights of the completed action items from the 2013 Community Plan. See the spreadsheet “Status of Action Items” for a comprehensive list.

## Circulation

- Completed Transportation Master Plan
- Completed Uptown Improvements
- Completed Transit Study
- Hired Transit Manager
- Launched trailhead shuttle system
- Completed GO Sedona Pathways Plan
- Constructed Thunder Mt/Sanborn and other shared use paths
- Established in-lieu fee for Uptown
- Acquired land and began design of a parking garage on Forest Rd
- Began construction of the Forest Road extension

## Community

- Acquired Historic Ranger Station property in 2014
- Park Master Plan completed in 2016
- Park construction and historic building renovations to be complete in 2024

## Environment

- Established Sustainability Program
- Expanded Sustainability Program staff to 3 employees
- Completed Climate Action Plan
- Completed Municipal Sustainability Plan
- Adopted the International Energy Conservation Code (IECC)

## Economic Development

- Hired Economic Development Director
- Completed Economic Diversification Plan

## Land Use & Housing

- Land Development Code updated
- Completed housing study
- Hired Housing Manager
- Completed CFA Plans: Soldiers Pass, Schnebly Hill, Cultural Park (Western Gateway), Sunset Live/Work, Uptown (draft)

## IMPLEMENTATION POLICIES

- ▶ **Policy 10.1** - Identify and use a variety of sources to finance necessary City services, facilities, equipment, and infrastructure that meet community needs.
- ▶ **Policy 10.2** - Support funding mechanisms that are beneficial to development and bear a reasonable relationship to the burden imposed on the City to provide additional necessary public services.
- ▶ **Policy 10.3** - Ensure the annual capital budget and City project priorities align with the Community Plan.
- ▶ **Policy 10.4** - Require development to pay its fair, proportionate share of service and infrastructure costs through development agreements, development impact fees, and other appropriate methods.



## IMPLEMENTATION ACTIONS

1. Periodically review and adjust the City's development impact fees ordinance to ensure that the City collects sufficient funding to construct additional infrastructure needed to serve new residents and businesses developing in Sedona.
2. Establish procedures for the review of Capital Improvements and other City projects and programs to ensure alignment with the Community Plan and Land Development Code.
3. Establish procedure for the periodic review of the Community Plan status with City Council.

# Community Plan Update

---

**Review of the Draft Plan as Recommended by the  
Planning and Zoning Commission**

**CITY COUNCIL WORK SESSION FEBRUARY 28, 2024**

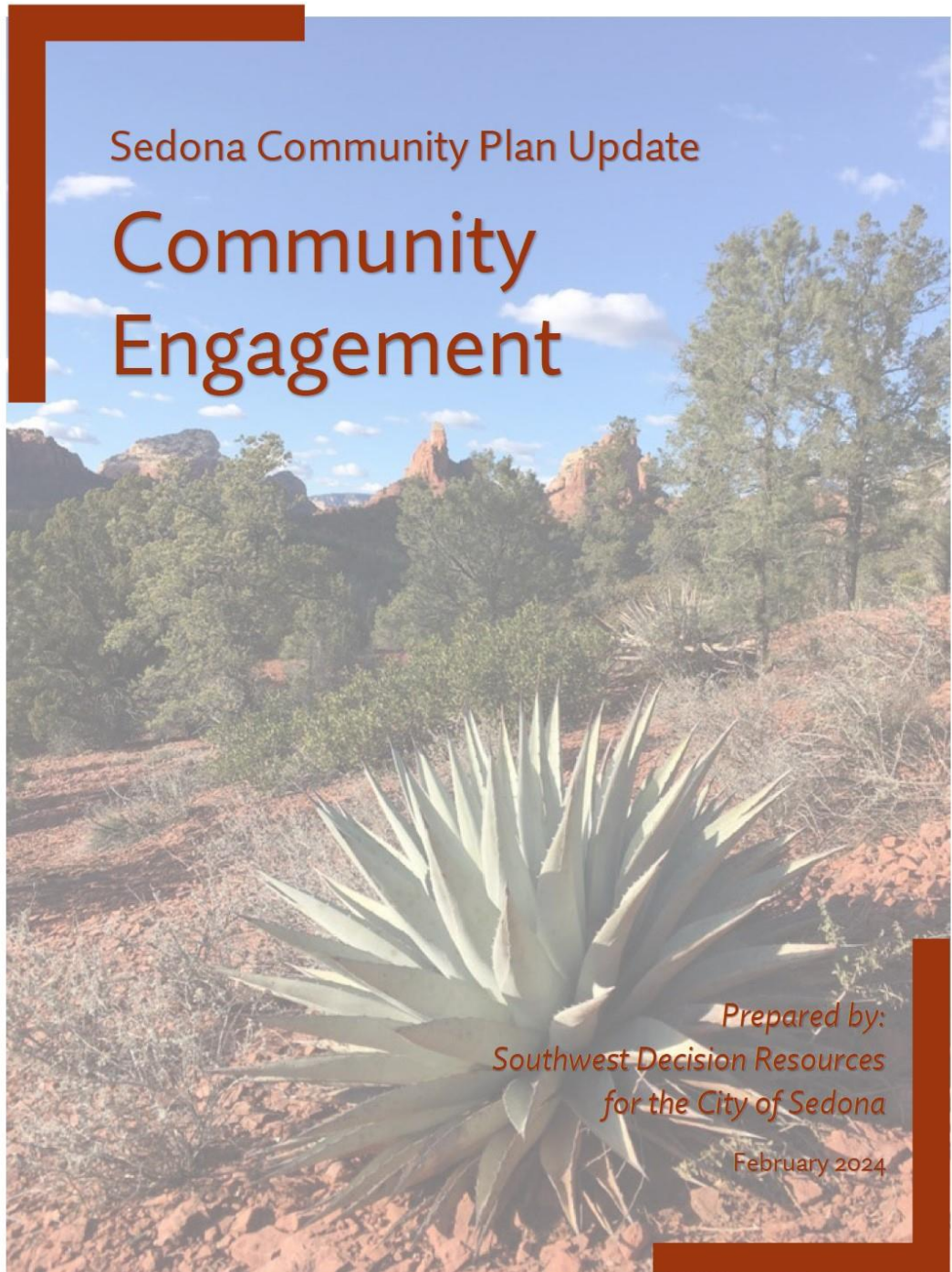
# Presentation

---

1. Community Engagement Overview
2. Scope of the Plan
3. Changes between 2013 Plan and the Draft Plan
4. Chapter Review & P&Z Recommendations

# Community Engagement 2022-2024

By: *Southwest Decision Resources*  
*Andi Rogers and Carrie Eberly*



# What do you love about Sedona?



September 2022 – Community Forum



# Engagement Approach

---



- Southwest Decision Resources' approach to community engagement focuses on equity and inclusivity, robust participation, and clear collaborative process.
- We utilize a place-based, iterative, and tailored approach to community engagement
  - What we do and what we learn from each phase of community engagement helps refine the next phase



# Summary of City of Sedona Community Engagement

March 2022-January 2024



## Early Engagement

## Plan Development

## Plan Review and Refinement



**WELCOME AND THANK YOU!!**  
Without your continued feedback the Community Plan isn't possible.

<p><b>COMMUNITY ENGAGEMENT:</b></p> <ul style="list-style-type: none"> <li>• 590 responses to Household Survey 4/22</li> <li>• 350 participants Community Forum 9/22</li> <li>• 30 Citizen Work Group meetings</li> <li>• ~150 participants Housing Forum 4/22</li> <li>• 15 agencies &amp; organizations at Partner Workshop</li> <li>• 2 listening and Learning Virtual sessions</li> <li>• 150+ participants at Community Meetings</li> <li>• 500+ Draft Plan Comments (and counting)</li> </ul>	<p><b>YOUR COMMENTS &amp; FEEDBACK HELPED SHAPE:</b></p> <ul style="list-style-type: none"> <li>• Vision, values, and guiding principles</li> <li>• New, expanded content for:             <ul style="list-style-type: none"> <li>• Tourism</li> <li>• Housing</li> </ul> </li> <li>• Key issues facing Sedona</li> <li>• Policies and action items</li> </ul>
---	--

**WHAT'S NEXT?**

<p><b>PLANNING AND ZONING COMMISSION</b></p> <p>February 20, 2024</p> <ul style="list-style-type: none"> <li>• Public Hearing             <ul style="list-style-type: none"> <li>• Attend and/or send comments</li> </ul> </li> <li>• Recommendation to City Council</li> </ul>	<p><b>ADD COMMENTS ONLINE!</b></p> <p>Visit: <a href="http://www.sedonazoning.com">www.sedonazoning.com</a> to add your thoughts (page by page) or fill a comment form.</p>
<p><b>CITY COUNCIL</b></p> <p>March 12, 2024</p> <ul style="list-style-type: none"> <li>• Public Hearing             <ul style="list-style-type: none"> <li>• Attend and/or send comments</li> </ul> </li> <li>• Adoption of Final Plan</li> </ul>	



# Household Survey

N=590

March-April 2022

	Total (%)
Traffic	74%
Affordable housing	38%
Management of forest/wildlife, environment, including regulate off-road/ATV's	35%
Regulate Short Term Rentals/Airbnb	30%
Build infrastructure, focus on community	25%
Tourism (too much, city is overwhelmed)	24%
Regulate growth	11%
Environmental Sustainability/, Better water/resource management	7%
Better parking for locals, address trailhead parking	6%
Anti-government sentiment	6%
Anti-Chamber of Commerce sentiment, Stop government support of CoC	3%
Tlaquepaque under/overpass, improve crossing	2%
Support police and fire services, enforce laws	2%
Improve building codes and code enforcement	1%
Improve Schools and Educational Opportunities	1%
Other	19%

Figure 3:  
Importance of Values from Current Community Plan





# Citizen Work Group – Scope & Mission

---

- Provide input on the planning process, community outreach methods, materials, and messaging
- Encourage public participation from the community
- Provide input on key community issues the Plan will need to address.
- Evaluate the current Community Plan as laypeople and suggest improvements on format, readability, layout, presentation, content, etc.

# Citizen Work Group



*Rick Henderson, Mary Garland, Monica Garland, Marci Taylor, Ann Kelly, Brian Fultz, Tonie Hansen, Mike Taylor, Ernie Strauch, Liliana Morales-Vasquez, John Sather, Linda Martinez*

## **Thank you so much to the Citizen Work Group!**

Your contributions were integral in developing and implementing a robust community engagement effort for the Community Plan Update.

### **Total Work Group meetings:**

30 meetings (in-person, virtual and hybrid),  
March 2022 - January 2024





# Early Engagement

## Community Kick-off Forum

- Focused on visioning, challenges and potential solutions, and mapping opportunities for Sedona

## Listening and Learning (virtual)

- Circulation - highlighting work to date and what is in the works with Q&A
- Economic Vitality - identification of issues that need to be defined, addressed and developed for Plan Update (e.g. affordable housing, tourism and local businesses)





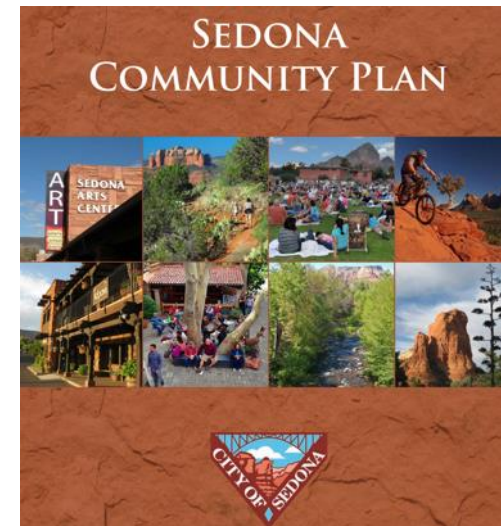
# Early Engagement

## Partner Meeting

- Focused solidifying partnerships and developing actions to address current challenges

## Citizen Work Group

- Convened and began reviewing 2013 Plan chapters and potential 2023 updates
- Input on engagement strategy
- Provided feedback on content, speakers and assisted with facilitation of events
- **What we learned: among all the important issues in Sedona, three rose to the top: Housing, Tourism and Land Use**







# Plan Development

## Planning a Livable Community Workshop

- Focused on information sharing of the realities of housing in Sedona, potential solutions to address challenges of affordable housing and visioning of a better housing future



## Community Meetings on Housing

- Smaller meetings organized to gauge support for housing and land use concepts
  - Facilitated by Work Group and community members
- Community meeting with the Spanish speaking community on housing and other concerns





# Plan Development

## Citizen Work Group

- Helped design and convene:
  - Planning a Livable Community workshop (Housing and Land Use)
  - Community Meetings on Housing held in
  - Spanish speaking engagement events
  - New Chapters on Tourism and Housing
- Focused on drafting new Plan content based on community feedback - Economy and Tourism, and Housing Chapters





# Plan Review and Refinement

## Online Draft Plan Review

- Posted to Konveio for community feedback
- Synthesis and summary of community comments on the Draft Plan



### KEY ISSUES<sup>1</sup> 2

This is a summary of the key issues of concern raised by the community during the Plan's public outreach in 2022 and 2023. Each element of the Plan features a list of relevant key issues. The following are those issues that are applicable to more than one chapter, thus explained here in more detail.

### SHORT-TERM RENTALS (STR)

Short-term rentals of single-family houses became legal in Sedona in 2017 after the State of Arizona passed a law (Senate Bill 1350) prohibiting cities from banning short-term rentals. Whereas from 1995-2016, the City of Sedona did not allow rentals of less than 30 days. In 2023 there were 1,140 identified STR.

This is a State law that pre-empts local control, so the City cannot prohibit STRs.

What the City can legally do:

- protect the public's health and safety
- adopt and enforce nuisance ordinances
- require the owner to provide an emergency contact
- limit/prohibit STR use for sex offenders or adult-oriented businesses
- prohibit STRs from having events that would require a permit at a typical single-family residential property including weddings, receptions, parties, retreats, workshops, and large religious gatherings

### WHAT HAS CHANGED?

16.8% of Sedona's housing are now STR (as of October 2023)

#### Real Estate Impacts

- less rental properties for residents
- forcing residents to move outside of Sedona
- removal of existing long-term rental residents to make way for STRs
- increased cost of housing
- investors outcompeting "home" buyers
- houses and guest houses being built to be short-term rentals (example 10 rooms/10 bath buses)

#### Neighborhood Impacts

- loss of a sense of community
- loss of neighborhood feel
- neighbor complaints: trash, noise, parking, etc

#### Benefits

- homeowners have an opportunity to make money
- increased property values
- economic ripple effect - jobs for property managers, home cleaning services, home renovation and repair services



### What can be used as a short-term rental?

- Single-family houses
- 1 to 4 unit houses (duplexes, etc.)
- Apartments with less than 5 units
- Condominiums, townhouses, cooperatives
- Individual rooms within any of above
- Guest houses, casitas, mother-in-law quarters

### What cannot be used as a short-term rental?

- Structures not approved as a dwelling unit; unsafe structures (garage, shed, etc.) that do not meet Building Codes
- Structures on a single-family zoned lot not permitted as a dwelling unit
- Apartments with 5 or more units
- Recreational Vehicles (RV's)
- Temporary structures (tents, yurts)





# Plan Review & Refinement

## “Plan Passport” - Community Forums in January (2)

Based on the Draft Plan, community members learned about updated Plan content and provided input on key areas to further expand and refine

### Citizen Work Group

- Helped refine and provided essential feedback into the Plan Passport event and contributed comments and feedback as members of the community

## SEDONA’S COMMUNITY PLAN PASSPORT

Today is an opportunity for you to:

- Learn what is in each chapter of the Draft Community Plan
- Tell us what you think

Passport Instructions: Please visit each station and provide comments/input on the Plan Chapter. Receive a stamp on this passport at each station and return this portion for a chance to win a gift basket!

### 1 PLAN INTRODUCTION

Find out:

What is a Community Plan and what it is not?  
 What are the components of the Plan?  
 What are the BIG key issues for THIS Plan?

### 2 VISION, CORE VALUES & GUIDING PRINCIPLES

Find out:

What is guiding the Community Plan?  
 What did we hear from the community?

Let us know:

Do you agree with the 3 Guiding Principles in the Draft Plan?

### 3 COMMUNITY

Find out:

How will Sedona rebuild a sense of community?  
 How will Sedona elevate arts & culture?

Let us know:

What is your favorite public place in Sedona?  
 How can public places be improved in Sedona?

### 4 LAND USE

Find out:

Will the new Community Plan have new Community Focus Areas?

Let us know:

What is your level of support for making West Sedona a more vibrant place with a mix of multi-story apartments, restaurants, shops, and offices?  
 Do you support ADUs as long-term rentals?

### 5 HOUSING

Find out:

What is the “Missing Middle”?

What have other community members agreed on regarding housing in Sedona?

How has the community engaged in the housing conversation?

Add comments at [www.plansedona.com](http://www.plansedona.com)



# In summary...

---

**30** Citizen Work Group meetings (in-person, virtual and hybrid)

---

**775** Community members estimated at in-person participation

---

**60** Participants in 2 virtual forums (Circulation and Economy)

---

**45** Key stakeholders at Partner workshop

---

**696** Total comments on the Draft Plan via Konveio

---

**62%** of participants (n=136) at the final Community Forum were 1<sup>st</sup> time plan participants!



# Questions on Community Engagement?



# Community Plan Scope & Community Input

---

## SUGGESTIONS & SCOPE

- The Plan is a high level, big picture document.
- Community suggestions that are at a more detailed, specific level will be addressed in other planning projects.

## NEXT LEVEL PLANNING

- Land Development Code
  - Future amendments
- Community Focus Area (CFA)
  - Planning process

# Major Changes 2013 Plan to Draft Plan

---

## CONTENT

- Community Priorities 2023-2033:
  - Tourism
  - Housing
  - Sustainability
- Revisions:
  - Elevated to Chapters
  - Integrated throughout

## FORMAT

### Community and Work Group Input:

- 2013 Policies
  - No explanation or context
  - Background information not always linked to policies

### Revisions:

- Most policies are followed by supporting information

# Chapter Review

---

# Introduction

---

Changes from 2013:

- Community Profile
  - Demographics
- Growth (over time)
  - Emphasis on rate of growth over time
  - Not proposing areas of growth due to limitations
- Summary of Key Issues

# Vision

---

## Community and Work Group Input:

- Simplify
- Improve readability

## Revisions

- Merged outcomes, vision themes, etc

## Sentiment is the same:

- Environment
- Community

# Community

---

## CHANGES FROM 2013 PLAN

Reorganized

Parks & Rec is Community

Community Input:

Need events, activities, and places for residents

Revisions:

Added text boxes on existing community amenities



# Land Use

## Changes 2013 Plan – Draft Plan

---

- Reduced the number of CFAs
  - West Sedona Commercial Corridor CFA
    - Combined CFAs: Dry Creek and Rodeo-Coffeepot
  - Uptown CFA
    - Combined CFAs: Ranger Rd, Uptown, and North Oak Creek
  - Removed CFAs
    - Low priorities: Morgan Rd and Copper Cliffs
    - Dells: circumstances different (County jurisdiction) from a CFA process
- Removed Lodging Area Limits
  - These areas were mostly built-out
  - Lodging as future land use is restricted to existing zoning

# Land Use

## P&Z Changes to Draft Plan

---

- Add Action:
  - Expand the designation of mixed-use where appropriate, as determined through the CFA planning process.
- Add Action:
  - Evaluate the annexation of land, expanding city limits.

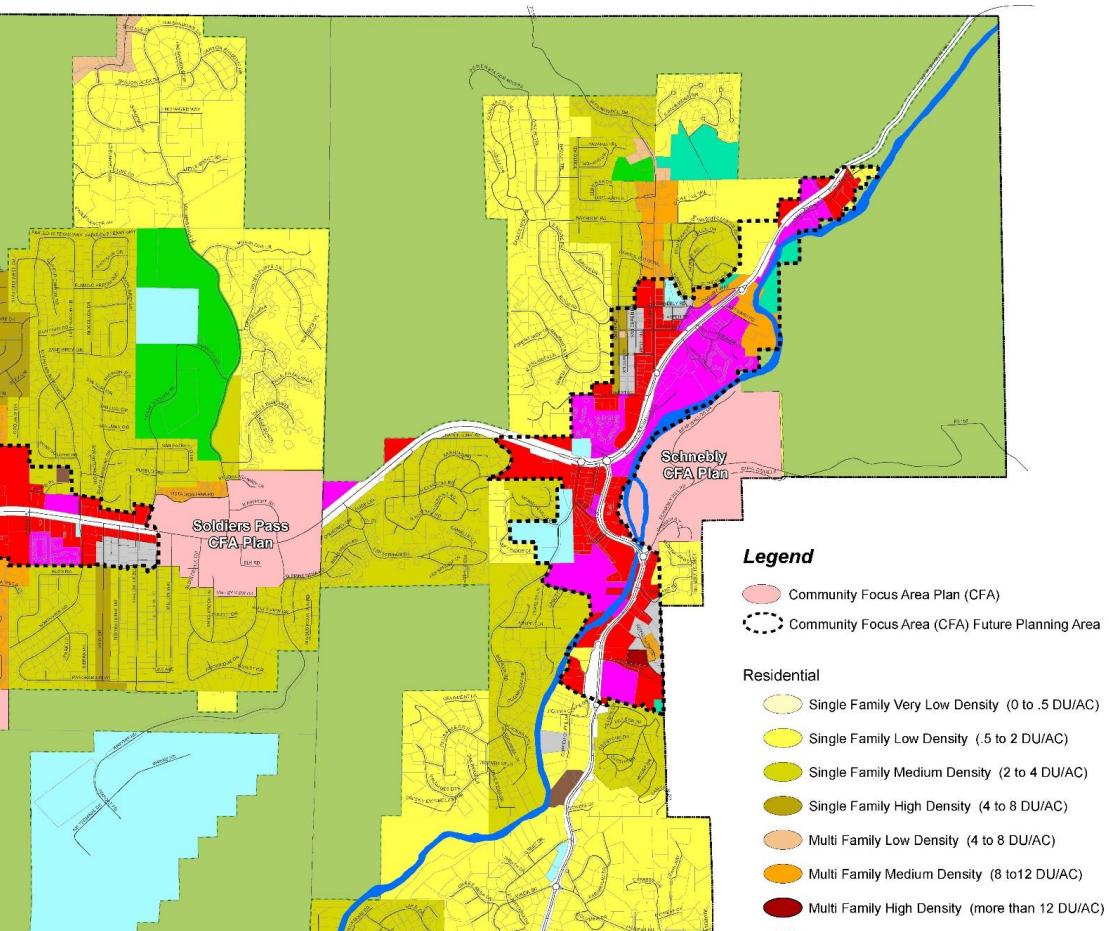
# Future Land Use Map

## Changes 2013 Plan – Draft Plan

---

- Replaced Planned Area with Mixed-Use
  - Along commercial corridors
  - Transitional Areas
  - Provide more guidance as to potential future uses
  - Either represents what is there now, or preferred for the future
- Selected parcels changed to Multi-family Residential
- CFAs with completed Plans designated pink on the map

Final Draft  
Interactive Map  
Enlarged in 3 parts



# Housing Chapter

---

Changes from 2013

Housing is an elevated priority

- Standalone chapter

“New” Housing Program with staff expands the city’s capabilities

# Circulation Changes from 2013

---

## Community Input:

Parking is a higher priority issue

## Revisions:

Standalone section with multiple policies and actions

–Land Development Code changes

- Uptown parking

- Partnerships for shared parking

Action – city-wide parking issues

## Since 2013:

- SIM Sedona In Motion
- Transportation Plan
- Transit Plan
- GO Pathways Plan

# Circulation P&Z Change

---

Policy 6.16: Explore transfer of State Routes W 89A and 179 within the City limits from State to City jurisdiction.

# Environment

## P&Z Changes

---

- Policy 8: Pursue working with property owners and developers to ensure future development preserves the Oak Creek corridor; including the potential for city acquisition for permanent protection.
- Action 10: Investigate strategies for either incentivizing or regulating water conservation measures, and addressing an aging water system.
- Investigate additional public/private partnerships for water conservation.
- Evaluate linking wastewater rates to water use to encourage water conservation.
- Investigate waste management (trash hauling) alternatives that are more efficient and sustainable.



# Environment

---

Natural Resources

-Addition?

Urban Wildlife  
Management

# Economy & Tourism

---

Changes from 2013:

Elevated to a chapter,  
Tourism combined with  
Economy

-Tourism is relevant to  
nearly all other topics

Expectation that the  
City's new Tourism  
Program will be  
formulating plans,  
strategies specific to  
tourism

# Implementation

## Future Land Use Change Applications

---

### MAJOR AMENDMENT CRITERIA

- Changes to non-residential use when more than 5 acres
- Any land use change to Commercial/Lodging

### Differences from 2013 Plan

- Less complicated
- Aligns more with other cities

### MINOR AMENDMENTS

- Residential changes
  - Residential density changes
  - Changes less than 5 acres to non-residential
- To further goals of housing diversity and affordability

# P&Z Recommended Changes

## Substantive Changes:

Added 5 actions

Revised 2 policies, 1 action

## Future Land Use Map Corrections:

### Parcel Designation:

- 80 Rigby Rd > Multi-family High Density

### Legend:

- “Other Private Open Space”

## Land Use Chapter

- Pg 48 Add Action: Expand Mixed-use Expand the designation of mixed-use where appropriate, as determined through the CFA planning process.
- Pg 48 Add Action: Annexation Evaluate the annexation of land, expanding city limits.

## Circulation

- 68 Revise Policy: SR 179 jurisdiction Policy 6.16: Explore transfer of State Routes W 89A and 179 within the City limits from State to City jurisdiction.

## Environment

- 90 Revise Action: Oak Creek land acquisition Policy 8: Pursue working with property owners and developers to ensure future development preserves the Oak Creek corridor; including the potential for city acquisition for permanent protection.
- 90 Revise Action: Aging water system Action 10: Investigate strategies for either incentivizing or regulating water conservation measures, and addressing an aging water system.
- 90 Add Action: Water conservation partnerships Investigate additional public/private partnerships for water conversation.
- 90 Add Action: Wastewater rates/water use Evaluate linking wastewater rates to water use to encourage water conservation.
- 90 Add Action: Trash hauling alternatives Investigate waste management (trash hauling) alternatives that are more efficient and sustainable.

# Proposed: Other Non-Substantive Changes

Substantive =  
goals, policies, actions

Non-substantive =  
background information, graphics,  
formatting, standardizing, etc

*Based on input from: Community, P&Z,  
City Council*



Maps



Illustrations



Charts and Data



Appendix: References, Glossary, List  
of Policies/Actions



Final Editing: grammar, style,  
format, graphics

Thank you!

---

Councilors

---

---

Planning and Zoning Commission

---

---

Work Group

---

---

Partners

---

---

**The Community!**

---

**Planning and Zoning Commission Draft 2 Changes of February 20, 2024**  
**Substantive Changes to Policies or Actions\***

Chapter	Page	Type of Change	Topic	Proposed Revision
Land Use	48	Add Action	Expand Mixed-use	<u>Expand the designation of mixed-use where appropriate, as determined through the CFA planning process.</u>
Land Use	48	Add Action	Annexation	<u>Evaluate the annexation of land, expanding city limits.</u>
Circulation	68	Revise Policy	SR 179 jurisdiction	Policy 6.16: Explore transfer of State Routes W 89A <u>and 179 within the City limits</u> from State to City jurisdiction.
Environment	90	Revise Action	Oak Creek land acquisition	Policy 8: Pursue working with property owners and developers to ensure future development preserves the Oak Creek corridor; <u>including the potential for city acquisition for permanent protection.</u>
Environment	90	Revise Action	Aging water system	Action 10: Investigate strategies for either incentivizing or regulating water conservation measures, <u>and addressing an aging water system.</u>
Environment	90	Add Action	Water conservation partnerships	<u>Investigate additional public/private partnerships for water conversation.</u>
Environment	90	Add Action	Wastewater rates/water use	<u>Evaluate linking wastewater rates to water use to encourage water conservation.</u>
Environment	90	Add Action	Trash hauling alternatives	<u>Investigate waste management (trash hauling) alternatives that are more efficient and sustainable.</u>
<p><i>*Other changes following the P&amp;Z February 20 hearing are background information and corrections; and illustration and graphics (additional improved graphics to follow).</i></p>				