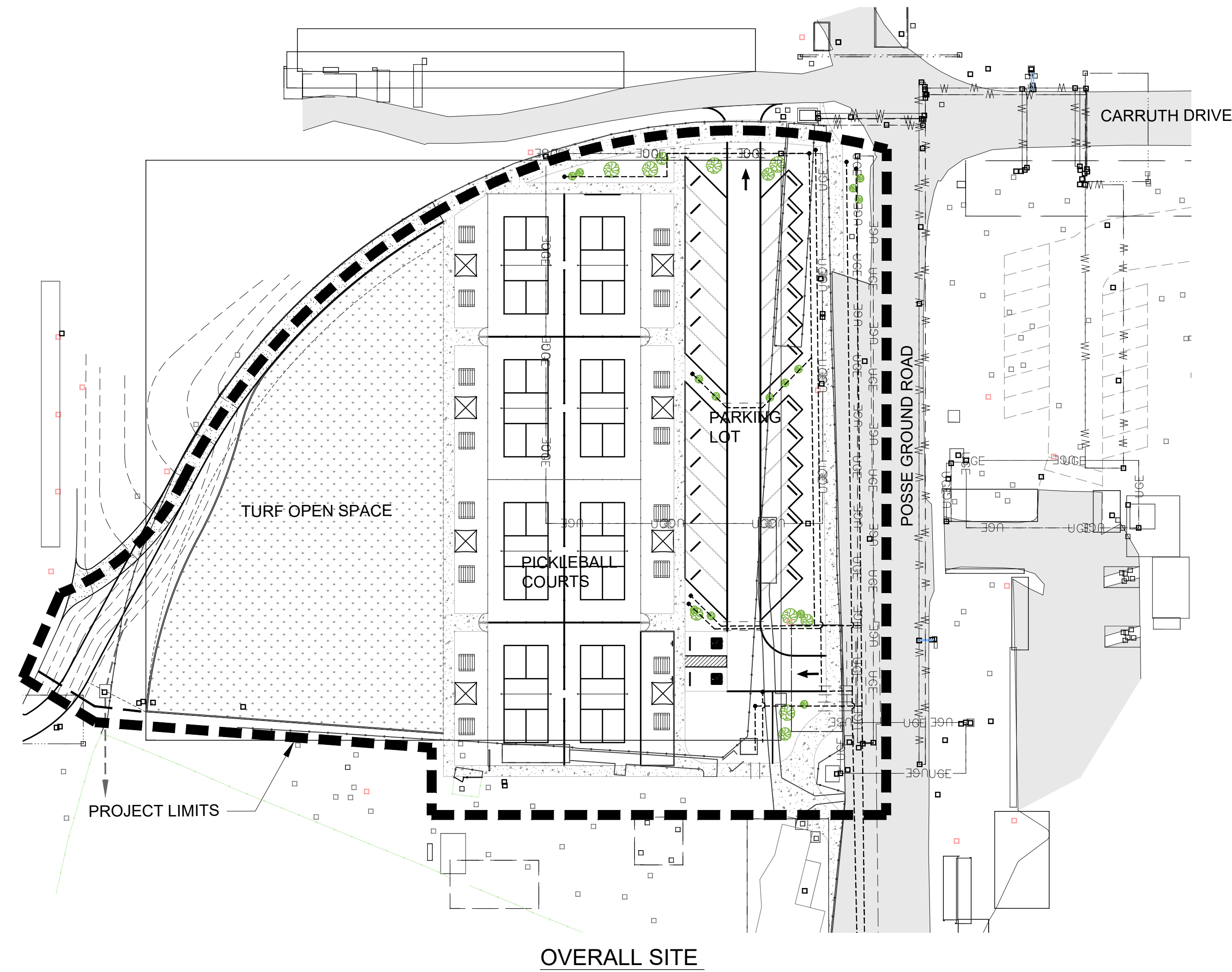


# City of Sedona Pickleball Courts at Posse Grounds Park Irrigation Improvements

LOCATED IN A PORTION OF SECTION 12, TOWNSHIP 17 NORTH,  
RANGE 5 EAST, GILA AND SALT RIVER MERIDIAN,  
YAVAPAI COUNTY, ARIZONA.



### CONTACT INFORMATION:

**OWNER**  
CITY OF SEDONA  
PUBLIC WORKS DEPARTMENT  
102 ROADRUNNER DRIVE  
SEDONA, AZ 86336  
PHONE: 928-204-7111  
CONTACT:  
EMAIL:

**LANDSCAPE ARCHITECTURE:**  
NEILL + YOUNG ASSOCIATES, LLC.  
3295 NORTH DRINKWATER BLVD., SUITE #12  
SCOTTSDALE, ARIZONA 85251  
CONTACT: TODD NEILL  
PHONE: 480.949.2721  
CELL: 602.617.2721  
EMAIL: tneill@neillandyoung.com

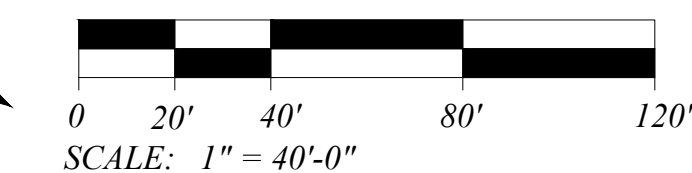
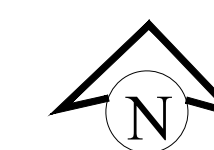
### SHEET INDEX

SHEET NO.	SHEET DESCRIPTION
1	L00 COVER SHEET
2	L01 KEY MAP / NOTES
3	L-1 IRRIGATION PLAN
4	L-2 IRRIGATION DETAILS
5	L-3 IRRIGATION DETAILS

### APPROVALS

APPROVED:

BY: \_\_\_\_\_ DATE \_\_\_\_\_  
KURT HARRIS  
DIRECTOR OF PUBLIC WORKS/CITY ENGINEER



LandscAPE Architecture  
Land Planning  
Urban Design  
phone 480.949.7127  
fax 480.949.2655  
tneill@neillandyoung.com  
3295 north drinkwater blvd  
suite 12  
scottsdale, arizona 85251



City of Sedona Posse Grounds Park  
Pickleball Court Irrigation  
102 Roadrunner Dr.  
Sedona, AZ 86336

DATE: 04-08-24

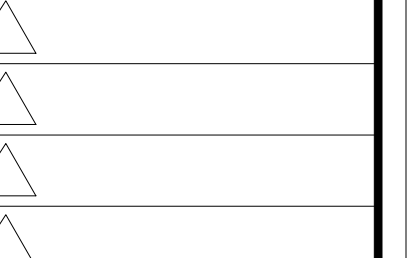
JOB NO:

DRAWN BY: NYA

DESIGNED BY: NYA

SCALE:

REVISIONS: DATE:



SUBMITTED FOR:

Not For Construction

SHEET NO.

**L00**

X OF

**GENERAL NOTES:**

1. THESE NOTES ARE TO BE USED FOR GENERAL REFERENCE IN CONJUNCTION WITH AND AS A SUPPLEMENT TO THE WRITTEN SPECIFICATIONS, APPROVED ADDENDUM, AND CHANGE ORDERS ASSOCIATED WITH THESE LANDSCAPE DRAWINGS.
2. A QUALIFIED SUPERVISOR SHALL BE PRESENT ON SITE AT ALL TIMES DURING CONSTRUCTION.
3. BEFORE WORK BEGINS ON THE PROJECT, THE LANDSCAPE CONTRACTOR SHALL REVIEW THE PROJECT WITH THE LANDSCAPE ARCHITECT AND/OR OWNER'S AUTHORIZED REPRESENTATIVE. THE LANDSCAPE ARCHITECT AND/OR OWNER'S AUTHORIZED REPRESENTATIVE IS TO APPROVE ANY OR ALL CHANGES PRIOR TO THE START OF ANY WORK.
4. LANDSCAPE CONTRACTOR SHALL INSPECT WITH THE OWNER'S AUTHORIZED REPRESENTATIVE ALL SIDEWALK AND CURB DEFECTS PRIOR TO BEGINNING WORK. ALL HARDSCAPE SHALL BE RE-INSPECTED DURING THE FINAL WALK-THRU. ANY DAMAGED AREAS SHALL BE REPAIRED AT THE CONTRACTOR'S EXPENSE.
5. VERIFY CRITICAL DIMENSIONS, REFERENCE POINT LOCATIONS, AND CONSTRUCTION CONDITIONS PRIOR TO INITIATING CONSTRUCTION., NOTIFY THE OWNER AND LANDSCAPE ARCHITECT IMMEDIATELY SHOULD CONFLICTS ARISE.
6. IT IS THE RESPONSIBILITY OF THE CONTRACTOR TO COORDINATE ALL CONSTRUCTION ELEMENT LOCATIONS WITH OTHER TRADES PRIOR TO INSTALLATION. THE CONTRACTOR SHALL BECOME FAMILIAR WITH THE LOCATIONS OF EXISTING AND FUTURE UNDERGROUND SERVICES AND IMPROVEMENTS WHICH MAY CONFLICT WITH THE WORK TO BE DONE. CONTACT BLUE STAKE AT 602-263-1100, 72 HOURS MINIMUM PRIOR TO INITIATING CONSTRUCTION. NOTIFY THE OWNER AND LANDSCAPE ARCHITECT IMMEDIATELY SHOULD CONFLICT ARISE.
7. OBSERVATION VISITS TO THE JOB SITE BY THE LANDSCAPE ARCHITECT DO NOT INCLUDE INSPECTIONS OF CONSTRUCTION METHODS AND SAFETY CONDITIONS AT THE WORK SITE. THESE VISITS SHALL NOT BE CONSTRUED AS CONTINUOUS AND DETAILED INSPECTIONS.
8. UNLESS OTHERWISE NOTED ON PLANS, DECOMPOSED GRANITE SHALL EXTEND UNDER SHRUBS AND BE RAKED UNIFORMLY ALONG WALK, SIDEWALK, AND CURBS.
9. LANDSCAPE CONTRACTOR SHALL PROVIDE BARRICADES AND TRAFFIC CONTROL ALONG PUBLIC STREETS IF REQUIRED DURING INSTALLATION.
10. REFER TO THE ENGINEERING DRAWINGS FOR DRAINAGE FLOWS. THE LANDSCAPE CONTRACTOR SHALL BE RESPONSIBLE THAT THESE ARE PROVIDED AND NOT IMPAIRED WITH OBSTRUCTIONS.
11. LANDSCAPE CONTRACTOR TO CONTACT LANDSCAPE ARCHITECT AND/OR OWNER'S AUTHORIZED REPRESENTATIVE BEFORE EACH APPLICATION OF PRE-EMERGENT FOR VERIFICATION.
12. BOULDERS TO BE SURFACE SELECT BOULDERS. ANY EXPOSED SURFACE SCARRING THAT MAY HAVE OCCURRED DURING TRANSPORTING OR CONSTRUCTION IS TO BE EONITED.

**IRRIGATION NOTES:**

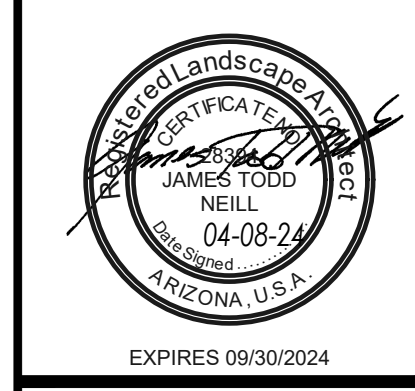
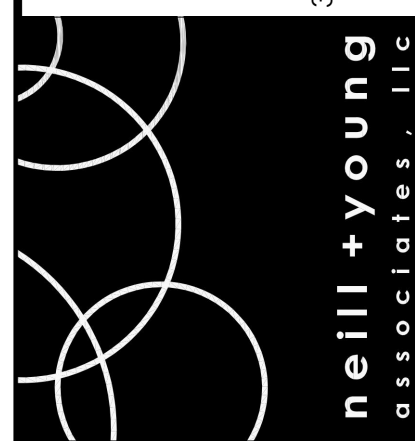
1. ALL IRRIGATION EQUIPMENT TO BE LOCATED IN LANDSCAPE AREAS WITHIN PROPERTY BOUNDARIES OF THE PROJECT – ALL LINES AND EQUIPMENT ARE SCHEMATIC AND ARE SOMETIMES SHOWN IN ROADWAYS, SIDEWALKS, OR OUTSIDE PROPERTY LINES. THIS IS DONE FOR CLARITY PURPOSES ONLY.
2. DO NOT INSTALL THE IRRIGATION SYSTEM AS SHOWN ON THE DRAWINGS WHEN IT IS OBVIOUS IN THE FIELD THAT UNKNOWN OBSTRUCTIONS, GRADE DIFFERENCES, OR DIFFERENCES IN AREA DIMENSIONS EXIST THAT MIGHT NOT HAVE BEEN CONSIDERED IN THE ENGINEERING. SUCH OBSTRUCTIONS OR CONFLICTS SHOULD BE BROUGHT TO THE ATTENTION OF THE OWNER AND LANDSCAPE ARCHITECT IMMEDIATELY. IN THE EVENT THIS NOTIFICATION IS NOT PERFORMED, THE CONTRACTOR SHALL ASSUME FULL RESPONSIBILITY FOR ANY REVISIONS NECESSARY.
3. THE IRRIGATION SYSTEM DESIGN IS BASED ON A MINIMUM SOURCE PRESSURE OF 60 PSI, A MINIMUM OPERATING PRESSURE OF 30 PSI AND A MAXIMUM FLOW DEMAND OF 26 GPM. THE CONTRACTOR SHALL VERIFY WATER PRESSURES PRIOR TO CONSTRUCTION AND REPORT ANY DISCREPANCIES BETWEEN THE WATER PRESSURE INDICATED ON THE DRAWINGS AND THE ACTUAL PRESSURE READING AT THE IRRIGATION POINT OF CONNECTION TO THE LANDSCAPE ARCHITECT IMMEDIATELY.
4. ALL MATERIAL USED SHALL BE INSTALLED AS DETAILED. ALL IRRIGATION EQUIPMENT NOT OTHERWISE DETAILED OR SPECIFIED SHALL BE INSTALLED PER MANUFACTURER'S RECOMMENDATIONS AND SPECIFICATIONS. OWNER'S REPRESENTATIVE AND/OR LANDSCAPE ARCHITECT SHALL APPROVE ALL DEVIATION'S FROM DRAWINGS OR MATERIALS USED.
5. THE OWNER'S REPRESENTATIVE MAY, AT ANY TIME, TAKE AND ANALYZE SAMPLES OF MATERIALS AND EQUIPMENT FOR CONFORMITY TO SPECIFICATIONS. THE CONTRACTOR SHALL MAKE SUCH SAMPLES AVAILABLE UPON REQUEST. REJECTED MATERIAL SHALL BE IMMEDIATELY REMOVED FROM THE SITE AND REPLACED AT THE CONTRACTOR'S EXPENSE.
6. INSTALL BACKFLOW PREVENTION UNIT(S) PIPING BETWEEN THE POINT OF CONNECTION AND THE BPU PER LOCAL CODES. THE OWNER'S AUTHORIZED REPRESENTATIVE SHALL APPROVE THE FINAL LOCATION OF THE BPU. BACKFLOW PREVENTOR MUST BE SCREENED FROM VIEW.
7. CONTRACTOR SHALL BE RESPONSIBLE FOR SUPPLYING MATERIALS AND LABOR TO PROVIDE SPECIFIED ELECTRICAL SERVICE TO ALL CONTROLLER LOCATIONS. ALL ELECTRICAL WORK TO BE PER MANUFACTURER'S SPECIFICATIONS AND PER LOCAL CODE.
8. 24 VOLT WIRE SHALL BE 600V, UF, UL APPROVED, #14 GAUGE, SINGLE STRAND, PLASTIC INSULATED, COPPER WIRE. COMMON WIRE IS TO BE WHITE, CONTROL WIRE IS TO BE RED (USE NO BLACK WIRE). TAPE AND BUNDLE WIRE AT 10' ON CENTER. LAY BESIDE MAINLINE. SPLICE IN VALVE BOXES ONLY, USING MANUFACTURED EPOXY OR RESIN FILLED WIRE CONNECTORS. PROVIDE 18" SLACK AT EACH ELBOW IN MAIN LINE AND AT EACH REMOTE CONTROL VALVE. PULL ONE ADDITIONAL SPARE WIRE TO THE MOST DISTANT VALVE LOCATION FOR POTENTIAL FUTURE USE. COLOR OF EXTRA WIRE SHALL BE YELLOW.

**PLANTING NOTES:**

1. CLARIFICATION OF DISCREPANCIES BETWEEN THE CONSTRUCTION DOCUMENTS AND THE SITE SHOULD BE BROUGHT TO THE ATTENTION OF THE LANDSCAPE ARCHITECT.
2. ALL PLANT MATERIAL MUST MEET ANA SPECIFICATIONS.
3. THE LANDSCAPE ARCHITECT AND/OR OWNER'S REPRESENTATIVE RESERVES THE RIGHT TO REFUSE ANY PLANT MATERIAL HE DEEMS UNACCEPTABLE. ALL PLANT MATERIAL SHALL BE INSPECTED PRIOR TO INSTALLATION.
4. PLANTS TO BE LOCATED AWAY FROM OBSTACLES SUCH AS FIRE HYDRANTS, TRANSFORMERS, POWER POLES, AND LIGHT FIXTURES AS NECESSARY. DO NOT INSTALL PLANT MATERIAL IN ANY AREA WHICH WILL CAUSE HARM TO ADJACENT IMPROVEMENTS.
5. VERIFY PLANT QUANTITIES PRIOR TO INSTALLATION. QUANTITIES ARE LISTED FOR CONVENIENCE ONLY, THE ACTUAL NUMBER OF SYMBOLS INDICATED ON THE PLANTING PLANS SHALL HAVE PRIORITY OVER QUANTITIES DESIGNATED. NOTIFY THE LANDSCAPE ARCHITECT OF QUANTITY DISCREPANCIES OR UNLEVELED MASSINGS IMMEDIATELY.
6. PLANT TREES, SHRUBS, AND CACTI PLUMB, AND FACED TO GIVE THE BEST APPEARANCE OR RELATIONSHIP TO ADJACENT PLANTS OR VIEWS.
7. NOTIFY OWNER AND LANDSCAPE ARCHITECT IMMEDIATELY SHOULD SOIL CONDITIONS BE PRESENT WHICH WOULD PREVENT PROPER SOIL DRAINAGE AND ALLOW WATER TO STAND IN PLANTING PITS.
8. DOUBLE STAKE ALL TREES OUTSIDE ROOTBALL., EXCEPT FOR SALVAGED TREES.
9. LANDSCAPE CONTRACTOR TO PERFORM A SOILS TEST PRIOR TO LANDSCAPE CONSTRUCTION TO DETERMINE ANY NUTRIENT DEFICIENCIES. IF ANY DEFICIENCIES EXIST, IT SHALL BE THE RESPONSIBILITY OF THE CONTRACTOR TO AMEND THE SOIL ACCORDINGLY.
10. SIGNS REQUIRE SEPARATE APPROVALS AND PERMITS.
11. PLANTS IN THE RIGHT-OF-WAY SHALL NOT EXCEED THREE FEET IN HEIGHT, OR IN THE CASE OF TREES, BRANCHES SHALL BE PRUNED UP TO A HEIGHT OF SIX FEET.

COPYING OR REPRODUCING ANY PART OF THESE PLANS WITHOUT THE WRITTEN PERMISSION OF NEILL+YOUNG ASSOCIATES, INC. IS STRICTLY PROHIBITED. THIS DOCUMENT IS THE SOLE PROPERTY OF NEILL+YOUNG ASSOCIATES, INC.

Landscaping Architecture  
Landscape Planning  
Urban Design  
phone 480.949.7127  
fax 480.949.2655  
neill@neillyoung.com  
3295 north drinkwater blvd  
suite 12  
scottsdale, arizona 85251



**City of Sedona Posse Grounds Park**  
**Pickleball Court Irrigation**  
102 Roadrunner Dr.  
Sedona, AZ 86336

DATE:	04-08-24
JOB NO:	
DRAWN BY:	NYA
DESIGNED BY:	NYA
SCALE:	

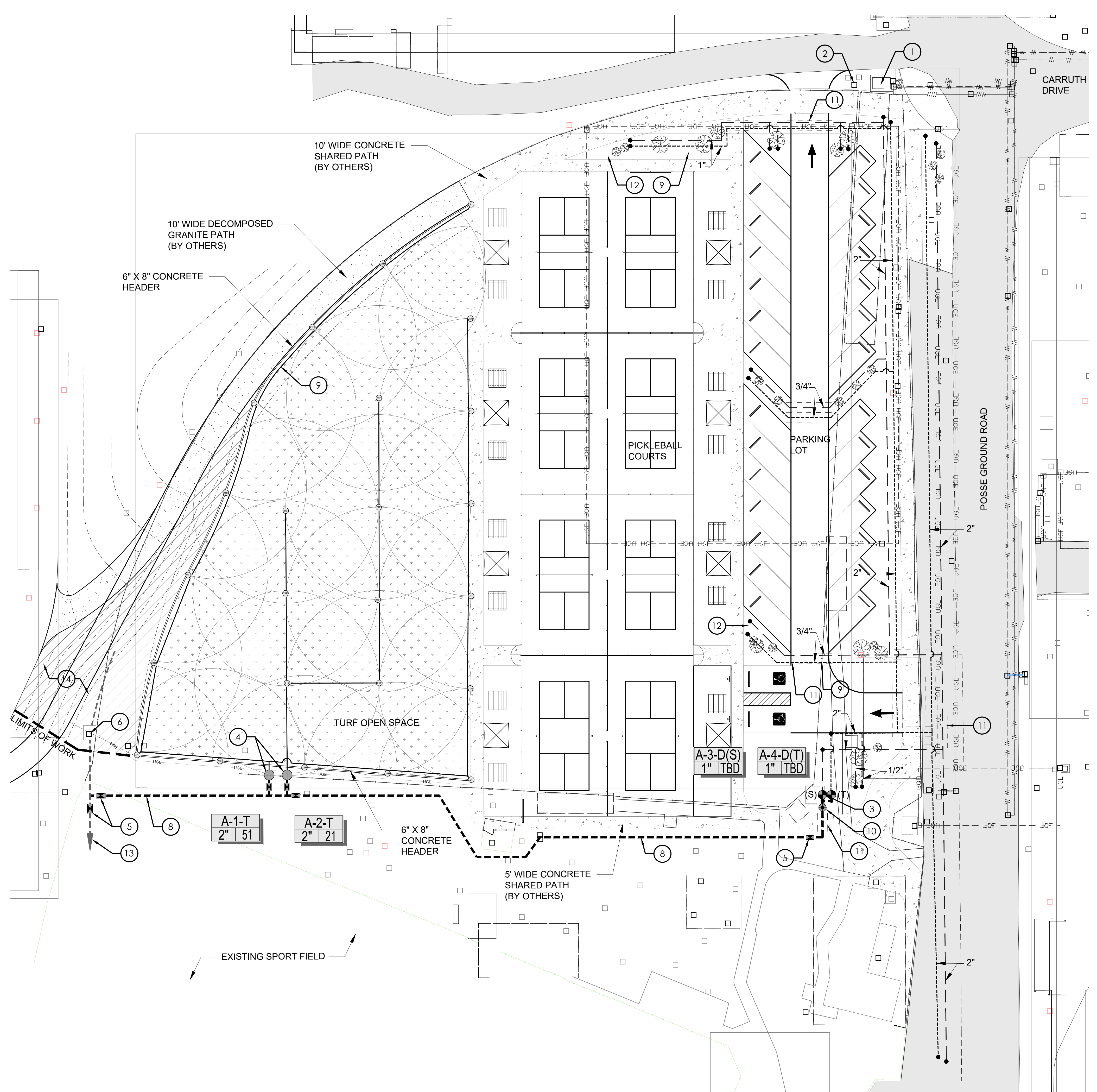
REVISIONS:	DATE:
△	
△	
△	
△	

SUBMITTED FOR:  
Not For Construction

SHEET NO.  
**L01**  
X OF



CONTRACTOR SHALL VERIFY ALL EXISTING UTILITIES. NO ALTERATIONS TO THESE PLANS ARE ALLOWED OTHER THAN AUTHORIZED NEILL+YOUNG EMPLOYEES.  
 THIS DOCUMENT IS THE SOLE PROPERTY OF NEILL+YOUNG ASSOCIATES.



**IRRIGATION SCHEDULE**

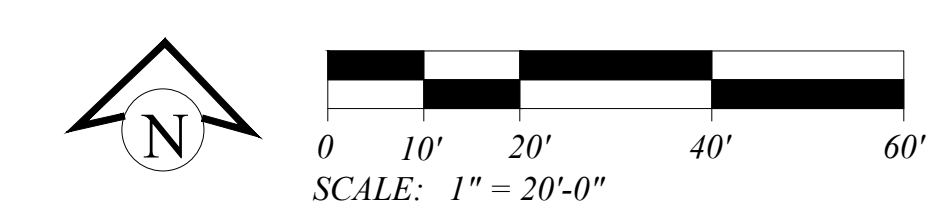
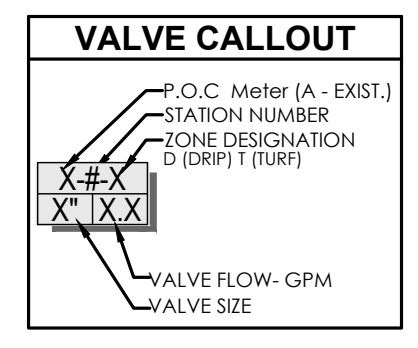
SYMBOL	ITEMS	DESCRIPTION	REMARKS
MA	IRRIGATION METER	EXISTING (THE CONTRACTOR SHALL VERIFY SIZE OF IRRIGATION METER PRIOR TO CONSTRUCTION).	
BOOSTER PUMP	BOOSTER PUMP	T.B.D.	
NOT SHOWN	SECURITY ENCLOSURE	GUARDIAN ENCLOSURES Backflow Cage - GE-3, CONTRACTOR TO VERIFY SIZE WITH BACKFLOW	COLOR-TAN
	GATE VALVE	3" BRONZE GATE VALVE	INTAN BOX
	DRIP VALVE	RAIN BIRD (BRASS VALVE); 100-EBBCP-PRS-D (DRIP), ADD PRESSURE REGULATING FILTER; 1" PRBY FILTER	INTAN VALVE BOX
	TURF VALVE	RAIN BIRD (BRASS VALVE); 200-EBBCP-PRS-D (TURF)	INTAN VALVE BOX
	QUICK COUPLER	RAIN BIRD; 33-DRC 3/4" QUICK COUPLER WITH VINYL AND LASCO G13T-SWING JOINT.	
NOT SHOWN	EMITTERS	RAIN BIRD XBT-10-6-BLACK, RAIN BIRD XBT-20-6-RED	SEE EMITTER SCHEDULE
	TURF ROTORS	HUNTER I-20 (I-20-04-S5-PRD); BLUE 3.0 NOZZLE	
	PVC SLEEVING	SLEEVING SHALL BE PROVIDED FOR ALL MAINLINE PIPE, LATERAL PIPE, CONTROL WIRING, and DRIP LATERAL PIPE. COORDINATE WITH GENERAL CONTRACTOR FOR PLACEMENT UNDER PAVED SURFACES, TYP.	SEE SLEEVING SCHEDULE
	3" PVC MAINLINE	3" SCH 40 PVC MAINLINE	
	DRIP LATERAL (TREE)	PVC LATERAL, CLASS 200	SEE PIPE SCHEDULE
	DRIP LATERAL (SHRUB)	PVC LATERAL, CLASS 200	SEE PIPE SCHEDULE
	TURF LATERAL	SCH 40 PVC TURF LATERAL	SEE PIPE SCHEDULE
	END CAP	CARSON END CAP	

**WATER PRESSURE NOTES**

THE SYSTEM HAS BEEN DESIGNED FOR A REQUIRED MINIMUM STATIC PRESSURE OF 55 PSI AT METER. THE CONTRACTOR IS RESPONSIBLE FOR VERIFYING THE PSI PRIOR TO CONSTRUCTION. THE CONTRACTOR IS RESPONSIBLE FOR NOTIFYING THE OWNER'S REPRESENTATIVE OF ANY DISCREPANCY BETWEEN THE DESIGN PRESSURE OF THE IRRIGATION SYSTEM AND ANY DIFFERENCE FROM THE ORIGINAL FIELD MEASURED PSI NOTED ABOVE. IF THE CONTRACTOR FAILS TO NOTIFY THE OWNER'S REPRESENTATIVE OF SUCH DISCREPANCIES, THEN THE CONTRACTOR ASSUMES ALL LIABILITY AND COSTS ASSOCIATED WITH SYSTEM MODIFICATIONS TO ACCOMMODATE THE DESIGN PRESSURE. LOCATIONS OF MAINLINE AND LATERALS ARE SHOWN SCHEMATICALLY. COORDINATE FINAL LOCATION WITH THE CONTRACTOR AND OTHER TRADES PRIOR TO BREAKING GROUND. THE CONTRACTOR SHALL ENSURE THE LAYOUT OF ALL TURF HEADS/ROTORS TO HAVE HEAD-TO-HEAD COVERAGE.

**IRRIGATION KEY NOTES**

- EXISTING METER - SEE IRRIGATION SCHEDULE
- BACKFLOW PREVENTER - SEE IRRIGATION SCHEDULE
- AUTOMATIC IRRIGATION DRIP VALVE - SEE IRRIGATION SCHEDULE
- AUTOMATIC TURF VALVE - SEE IRRIGATION SCHEDULE
- GATE VALVE - SEE IRRIGATION SCHEDULE
- BOOSTER PUMP - SEE IRRIGATION SCHEDULE
- EXISTING IRRIGATION CONTROLLER - SEE IRRIGATION SCHEDULE
- MAINLINE - (LOCATIONS AS SHOWN ARE SCHEMATIC) COORDINATE FINAL LOCATION WITH GENERAL CONTRACTOR and OTHER TRADES PRIOR TO BREAKING GROUND.
- LATERAL LINES - (LOCATIONS AS SHOWN ARE SCHEMATIC) COORDINATE FINAL LOCATION WITH GENERAL CONTRACTOR AND OTHER TRADES PRIOR TO BREAKING GROUND.
- QUICK COUPLER - SEE IRRIGATION SCHEDULE
- PVC IRRIGATION SLEEVE - SEE IRRIGATION SCHEDULE (GENERAL CONTRACTOR SHALL PROVIDE SCH 80 PVC SLEEVING UNDER ALL NEW STREETS PER CITY OF SEDONA STANDARDS).
- FLUSH END CAP - SEE IRRIGATION SCHEDULE.
- EXISTING MAINLINE - THE CONTRACTOR SHALL VERIFY LOCATION AND SIZE OF MAINLINE PRIOR TO CONSTRUCTION).
- DECOMPOSED GRANITE TOP DRESSING TO MATCH TO EXISTING.

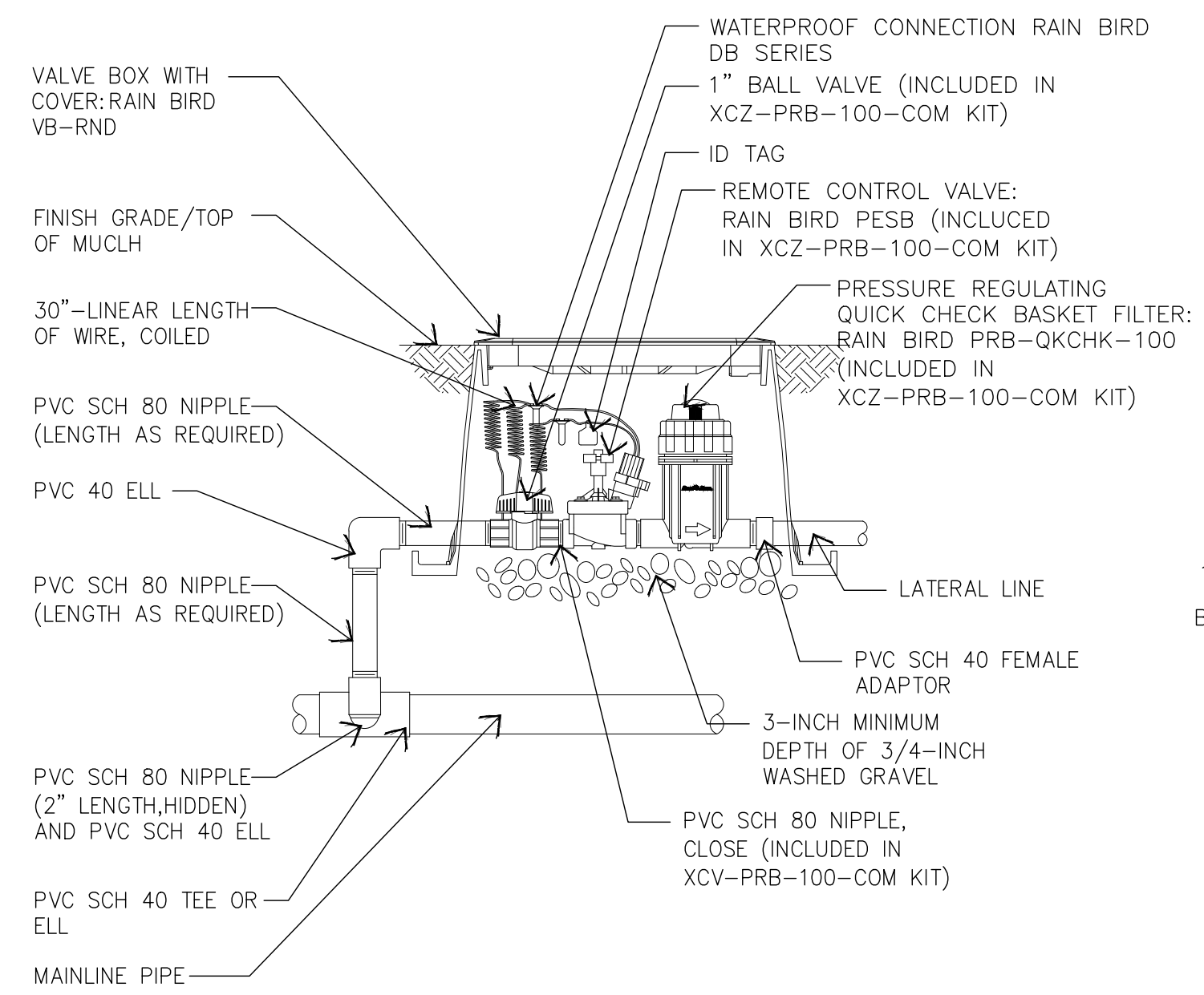


Landscape Architecture  
 Land Planning  
 Urban Design  
 phone 480.949.7127  
 fax 480.949.2655  
 neill@neillyoung.com  
 3295 north drinkwater bvd  
 suite 12  
 scottsdale, arizona 85251  
**neill + young**  
 associates, llc

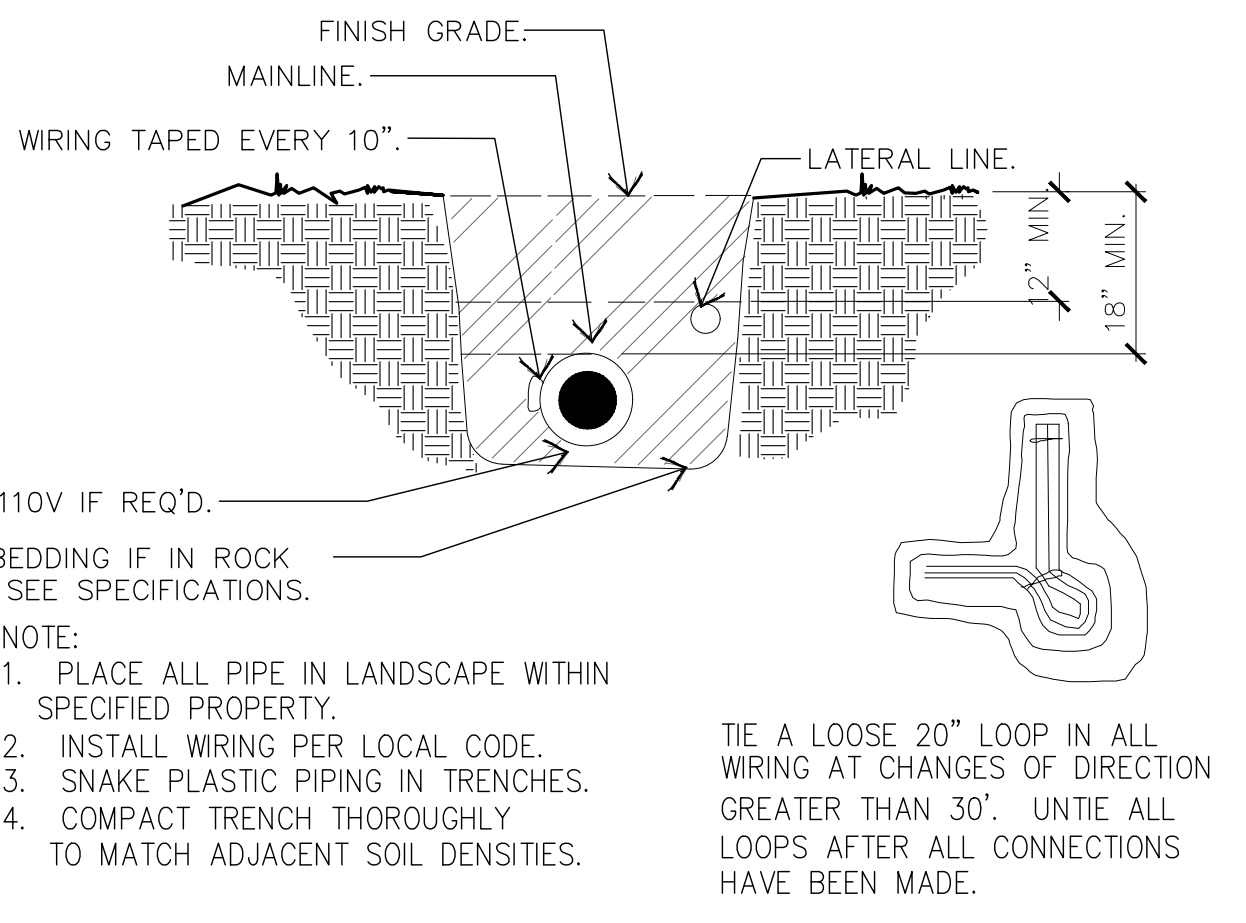


**City of Sedona Posse Grounds Park**  
**Pickleball Court Irrigation**  
 102 Roadrunner Dr.  
 Sedona, AZ 86336

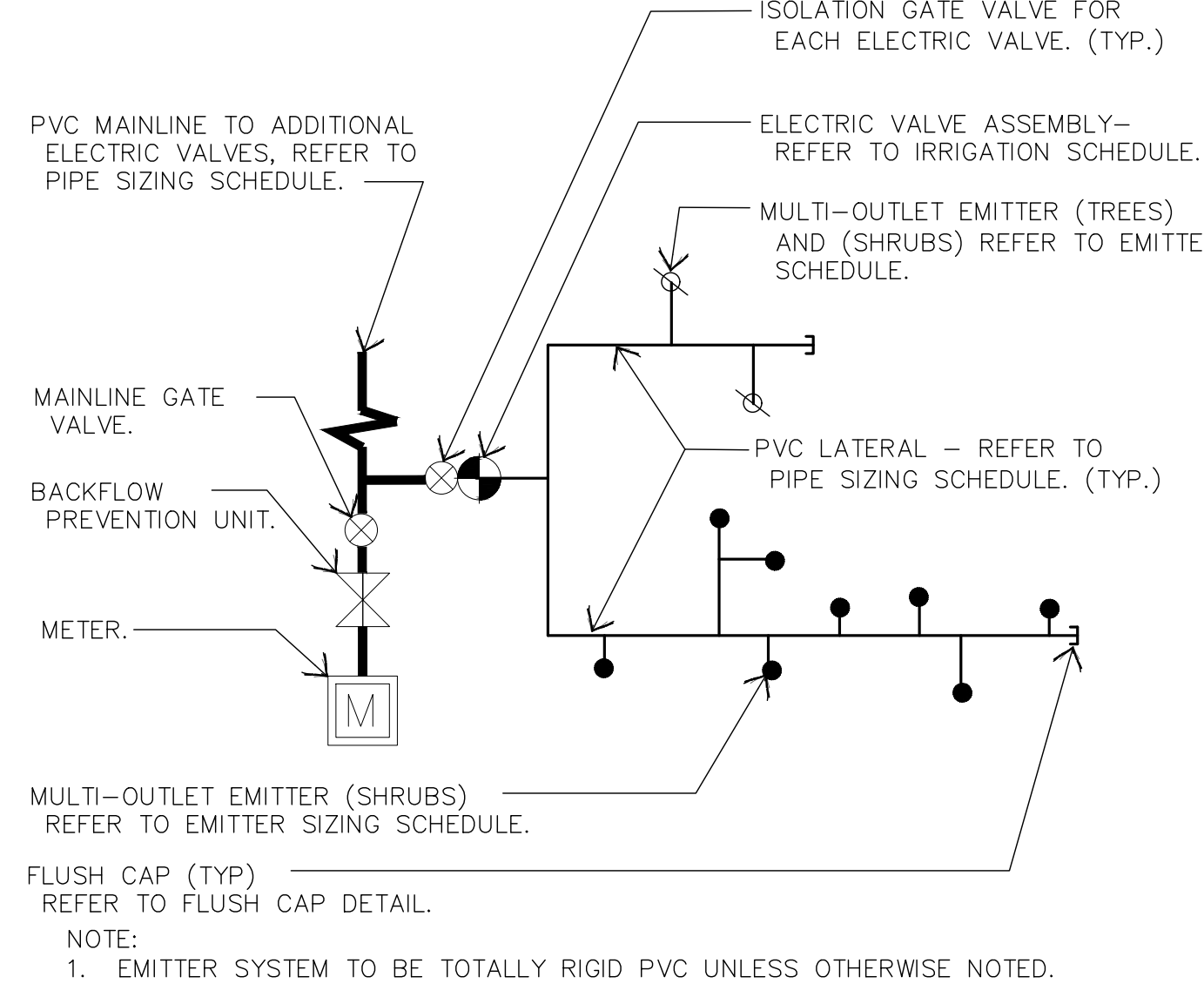
DATE:	04-08-24
JOB NO:	
DRAWN BY:	NYA
DESIGNED BY:	NYA
SCALE:	
REVISIONS:	DATE:
△	
△	
△	
SUBMITTED FOR:	Not For Construction
SHEET NO.	L-1
	X OF



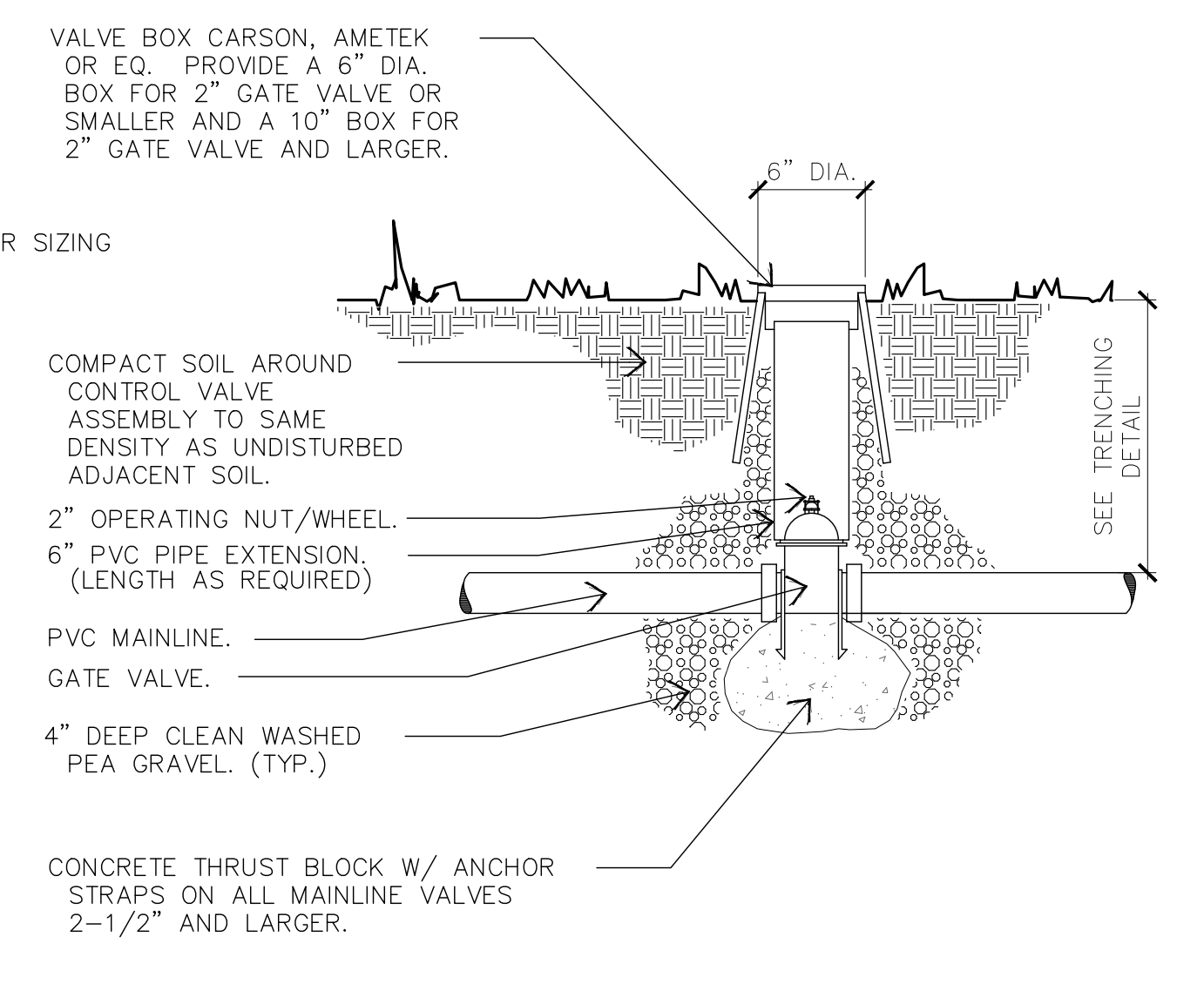
**1 AUTOMATIC VALVE ASSEMBLY**  
SCALE: N.T.S. ID-16



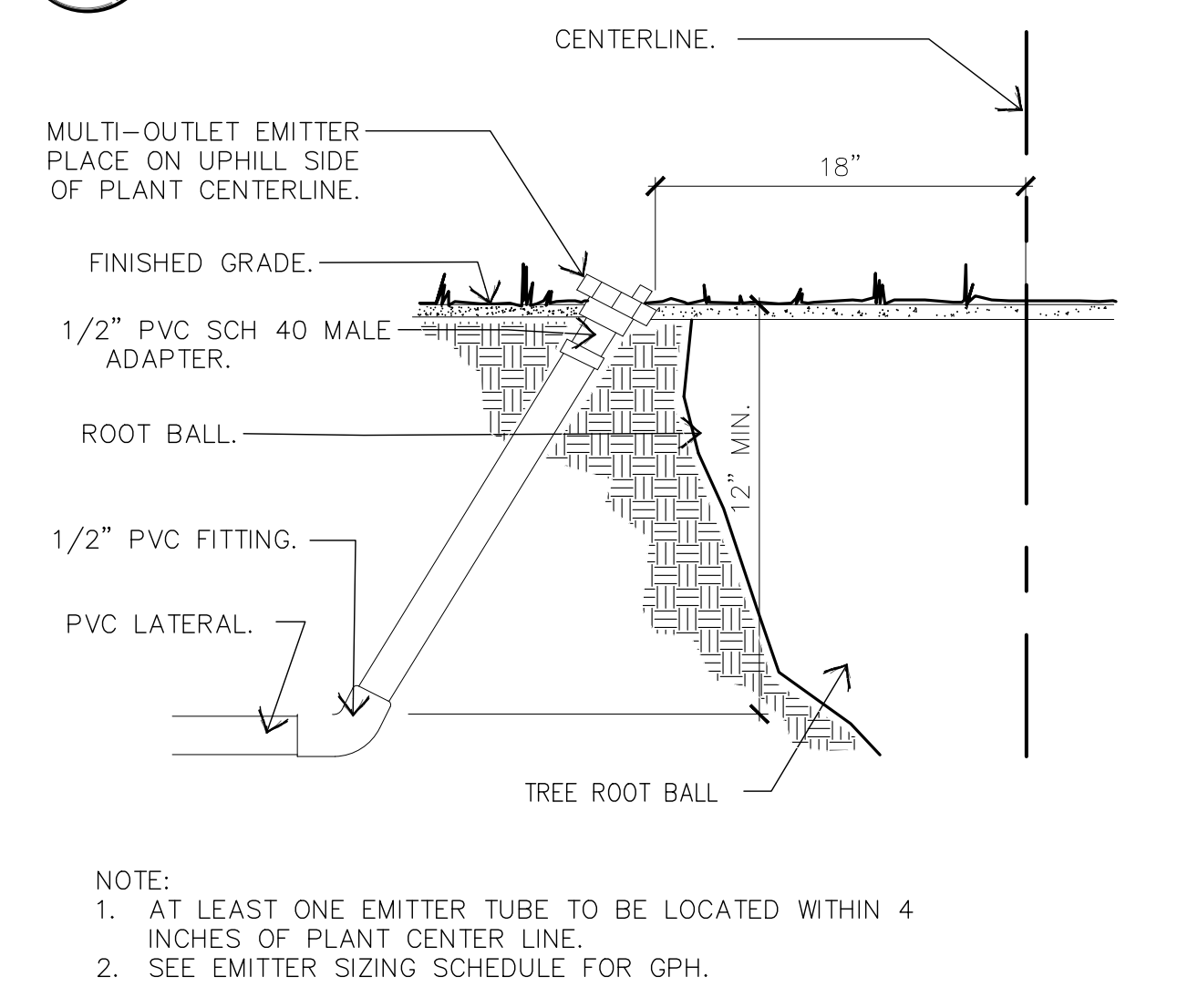
**2 TRENCHING DEPTH DETAIL**  
SCALE: N.T.S.



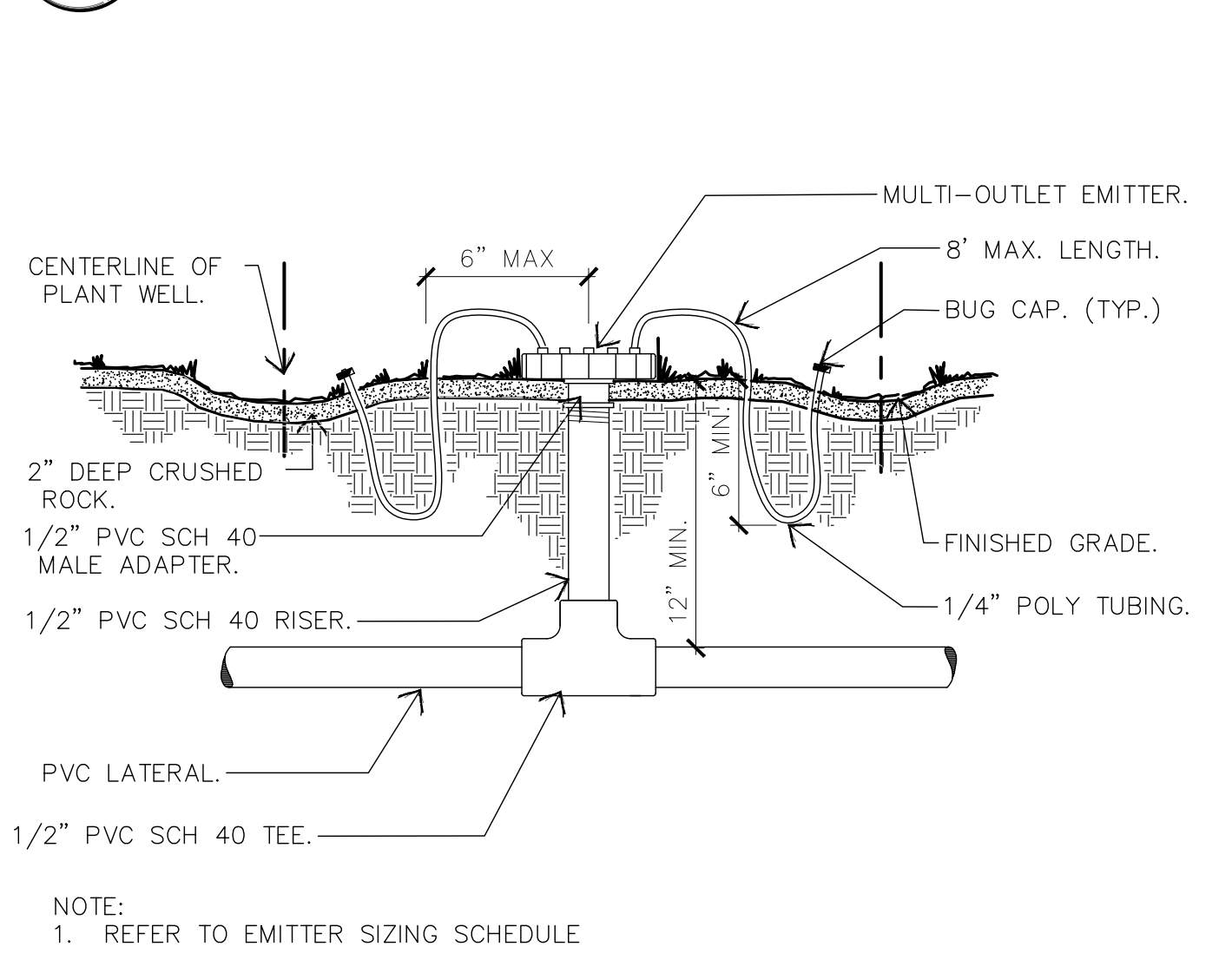
**3 PIPE LAYOUT DETAIL**  
SCALE: N.T.S. ID-2



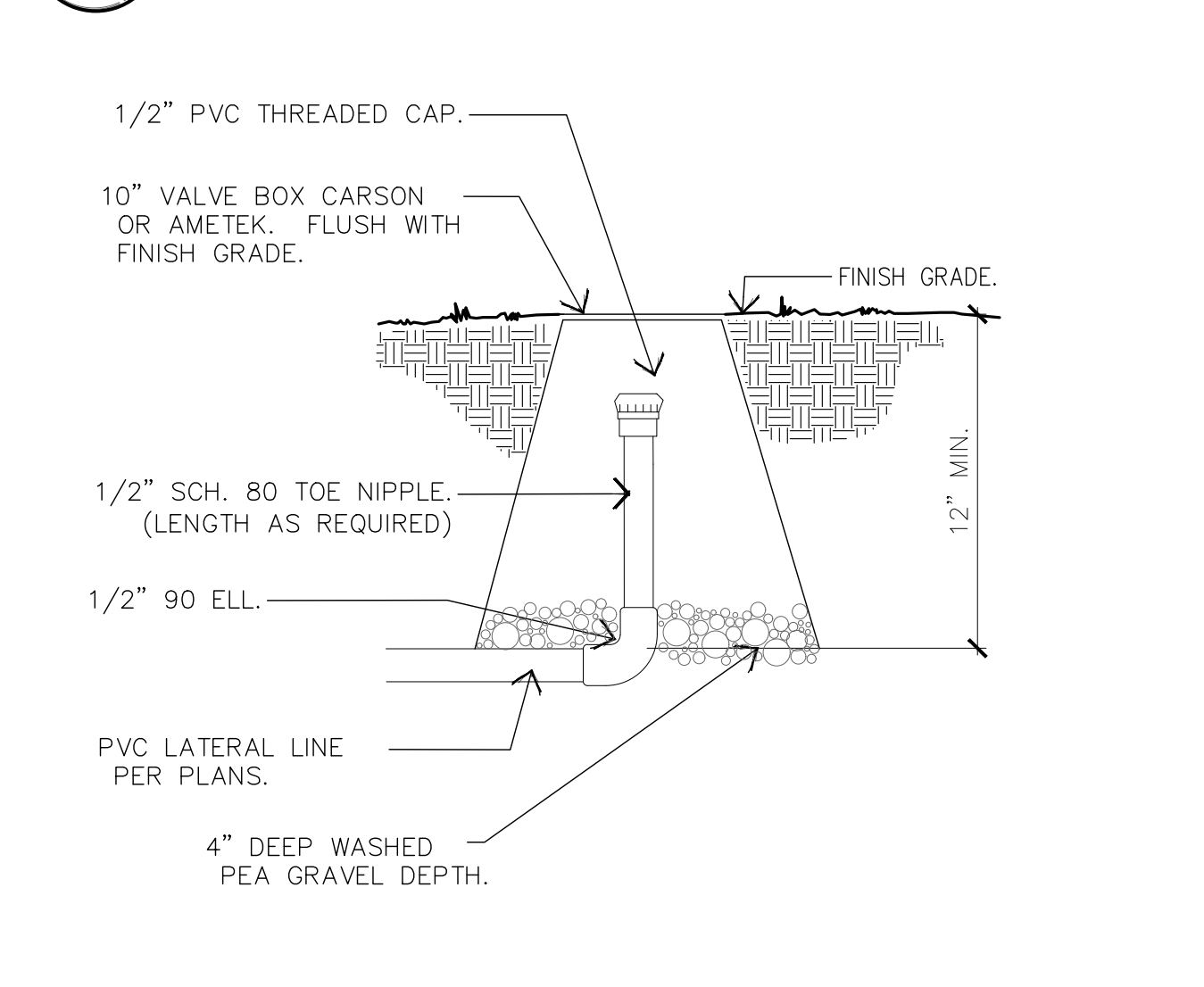
**4 GATE VALVE DETAIL**  
SCALE: N.T.S. ID-20



**5 MULTI OUTLET EMITTER @ TREES**  
SCALE: N.T.S. ID-15



**6 MULT-OUTLET EMITTER @ SHRUBS**  
SCALE: N.T.S. ID-9



**7 FLUSH CAP DETAIL**  
SCALE: N.T.S. ID-10

**8 EMITTER SIZING SCHEDULE**  
SCALE: N.T.S. ID-13

PLANT SIZE	FLOW/PER PLANT	EMITTER/BUBBLER	QTY
ACCENTS	1 GPH	Rain Bird XBT-10-6:Black	1 - 1 GPH Outlet
1 GAL PLANTS	1 GPH	Rain Bird XBT-10-6:Black	1 - 1 GPH Outlet
5 GAL PLANTS	2 GPH	Rain Bird XBT-10-6:Black	2 - 1 GPH Outlets
DESERT TREES	6 GPH	Rain Bird XBT-10-6:Black	6 - 1 GPH Outlets
RED PUSH-TREES	24 GPH	Rain Bird XBT-20-6:Red	12 - 2 GPH Outlets

NOTE:  
1. PROVIDE IRRIGATION TO 4-5 SHRUBS MAX PER MULTI PORT EMITTERS. (TYP.)  
2. DO NOT PROVIDE IRRIGATION TO CACTUS.

NOTE:  
ALL PIPE SLEEVES SHALL BE SCHEDULE 40 PVC AND INSTALLED WITH A MINIMUM OFFSET AT THE JOINTS TO PERMIT EASY INSTALLATION AND REMOVAL OF THE IRRIGATION LINES.  
ALL PIPE SLEEVES INSTALLED UNDER NEW STREETS SHALL BE SCHEDULE 80 PVC PER CITY OF BUCKEYE STANDARDS. SLEEVES SHALL EXTEND AT LEAST 12" BEYOND THE EDGES OF THE PAVEMENT. SIZE OF SLEEVES SHALL BE AS FOLLOWS:

**SLEEVING SCHEDULE**

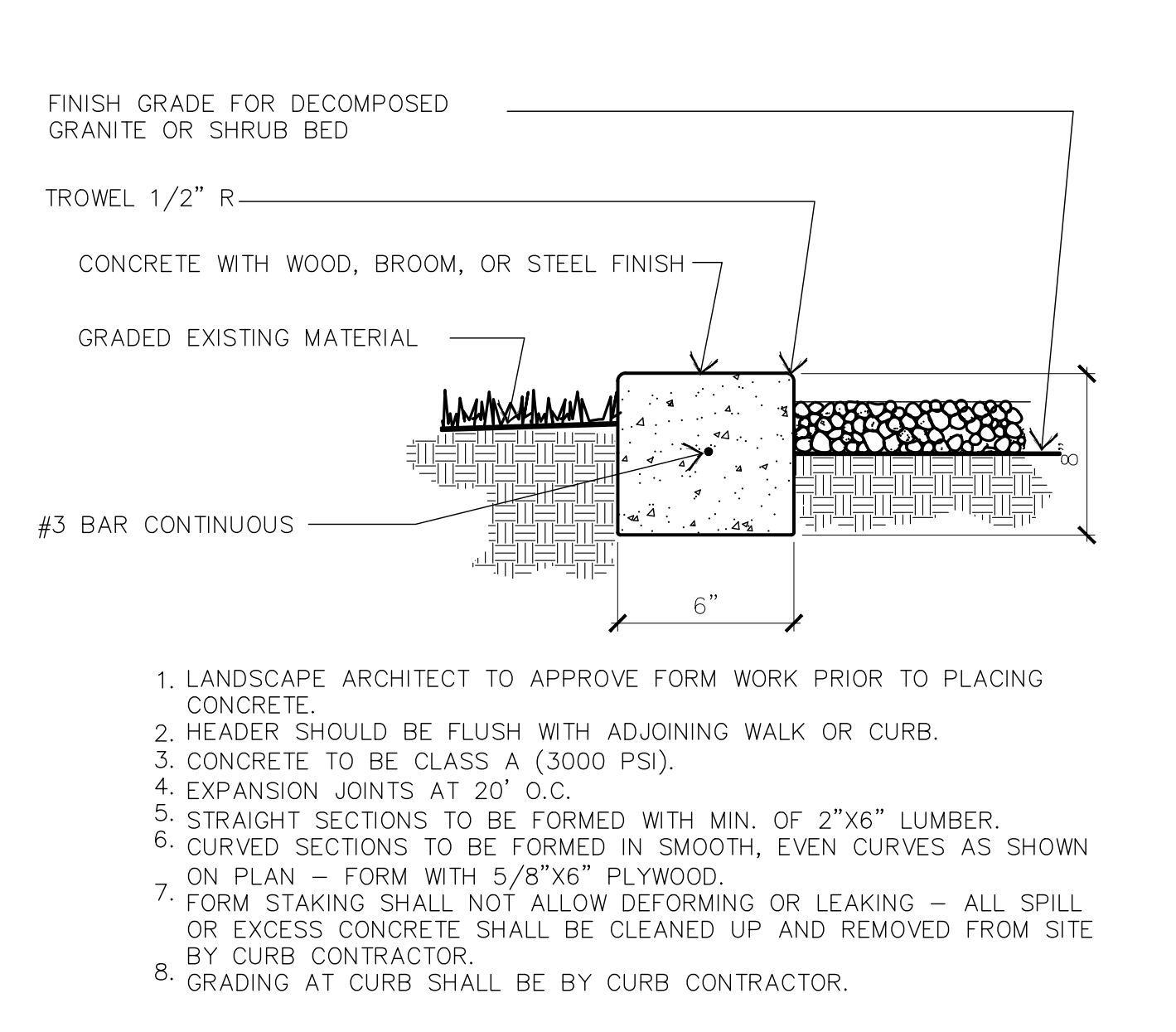
PIPE SIZE	MIN. SLEEVE SIZE	PIPE SIZE	MIN. SLEEVE SIZE
1/2"	2"	2", 2-1/4"	4"
3/4"	2-1/2"	3", 4"	6"
1", 1-1/4", 1-1/2"	3"		

**PIPE SIZING SCHEDULE**

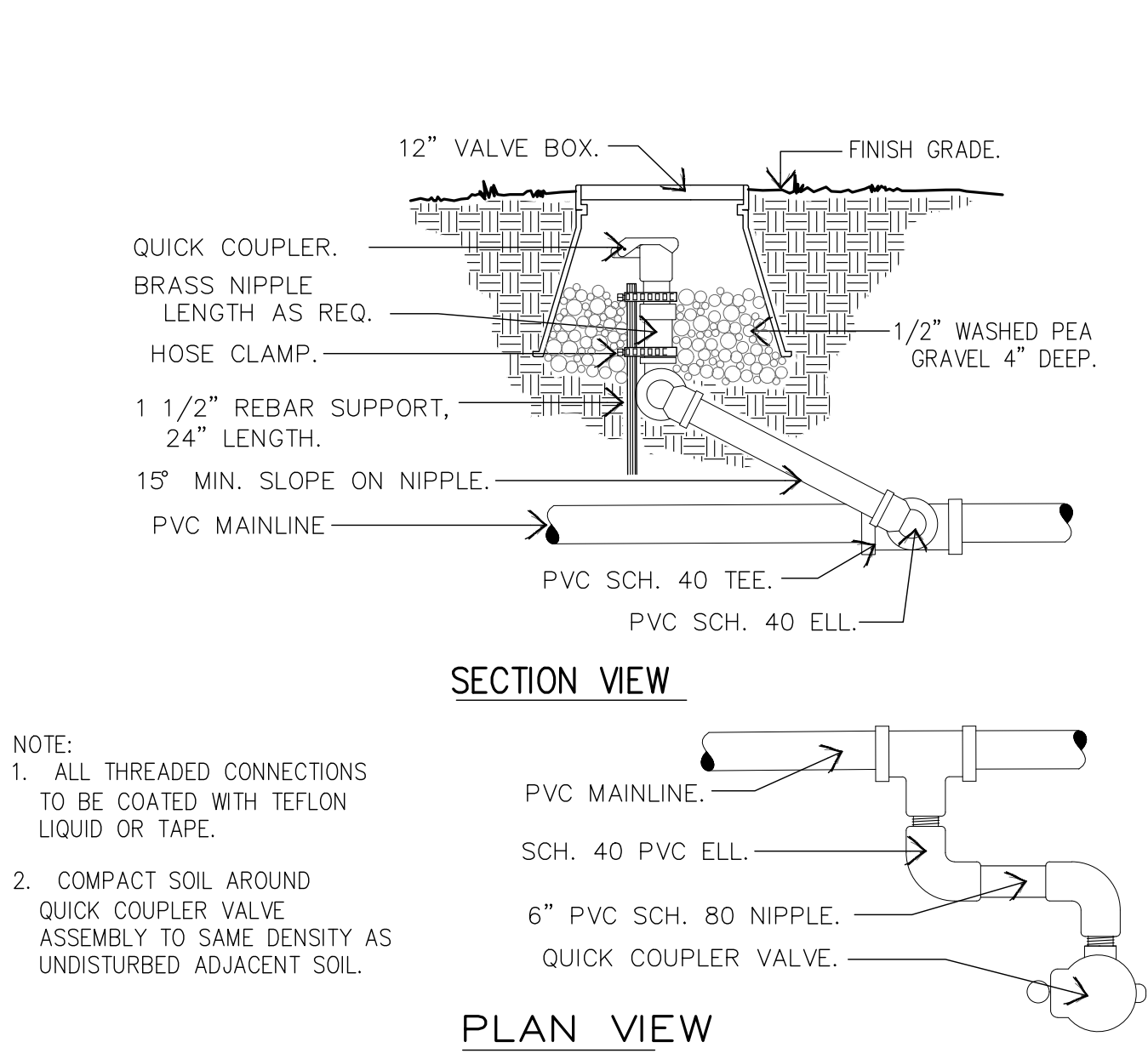
PIPE SIZE	FLOW (GPM)	PIPE SIZE	FLOW (GPM)
1/2"	0 - 5	2"	36 - 80
3/4"	6 - 10	2-1/2"	61 - 60
1"	11 - 15	3"	81 - 120
1-1/4"	16-25	3 1/2"	121 - 150
1-1/2"	26 - 35	4"	151 - 200

NOTE:  
ALL MAINLINE PIPE 2" AND LARGER SHALL BE SCHEDULE 40 PVC RING-TIGHT PIPE. ALL DRIP LATERAL PIPE ABOVE 1/2" SHALL BE MINIMUM CLASS 200 AND ALL 1/2" LATERAL PIPE SHALL BE CLASS 315. ALL TURF LATERAL SHALL BE SCHEDULE 40 PVC.

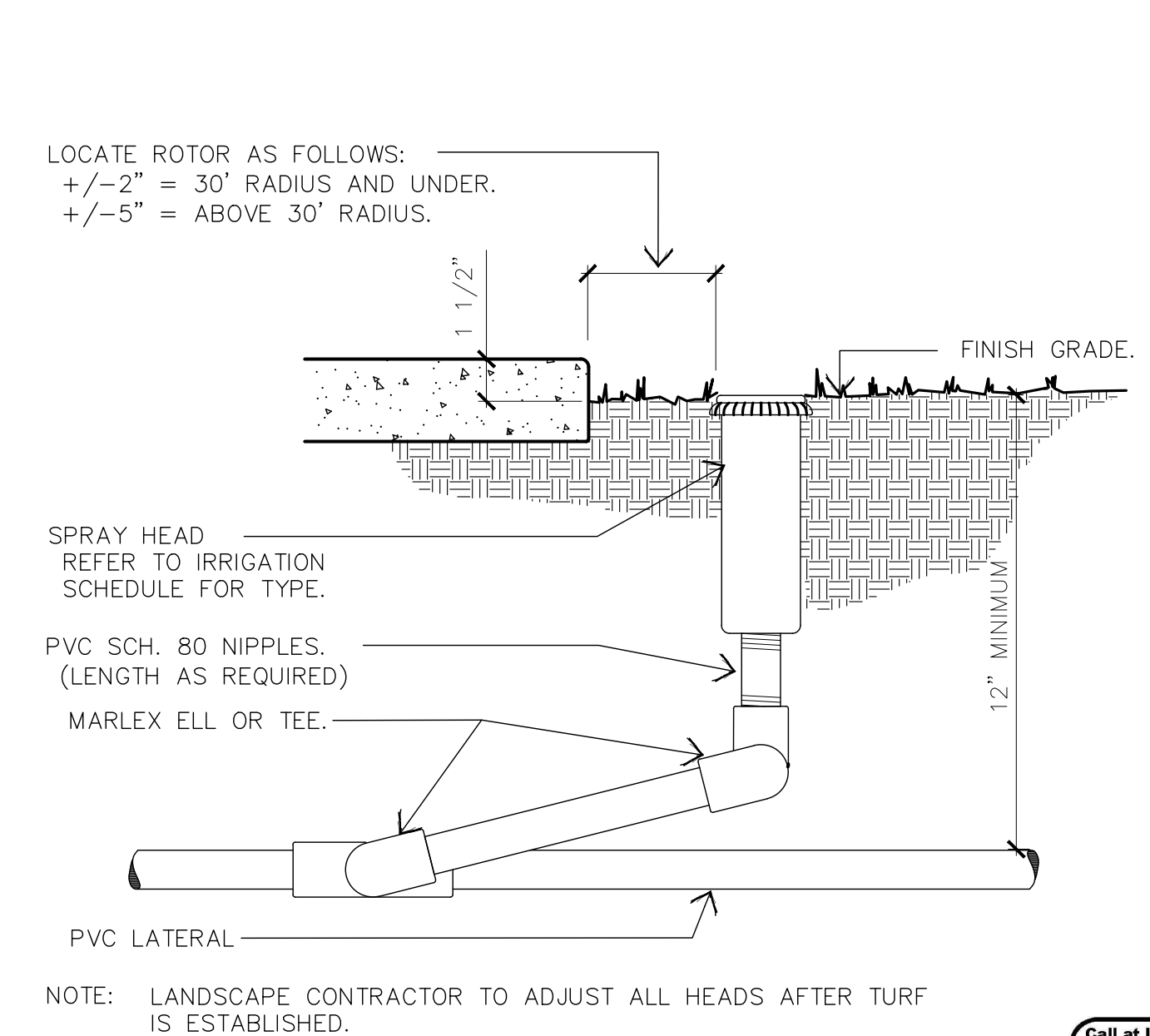
**9 SLEEVE/PIPE SIZE**  
SCALE: N.T.S. ID-8



**10 CONCRETE HEADER**  
SCALE: N.T.S. LD-2



**11 QUICK COUPLER DETAIL**  
SCALE: N.T.S. ID-1



**12 ROTOR POP-UP**  
SCALE: N.T.S.



Landscape Architecture  
Land Planning  
Urban Design  
phone 480.949.7127  
fax 480.949.2655  
neill@neillandyoung.com  
3295 north drinkwater blvd suite 112  
scottsdale, arizona 85251

**neill + young**  
a s s o c i a t e s , l l c

Professional Landscaper  
Certification  
JAMES TODD NEILL  
04-08-24  
ARIZONA U.S.A.  
EXPIRES 09/30/2024

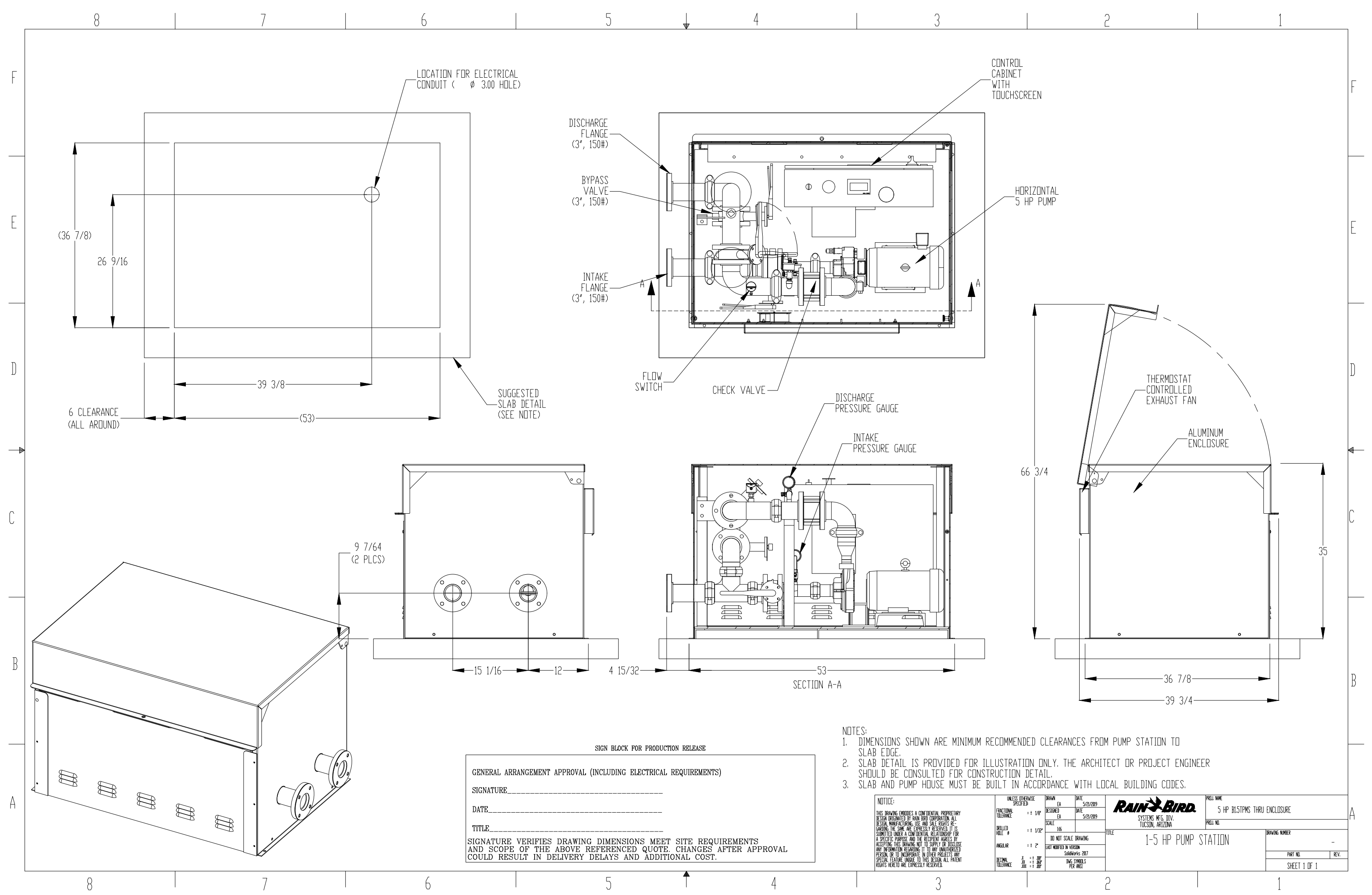
**City of Sedona Posse Grounds Park**  
**Pickleball Court Irrigation**  
102 Roadrunner Dr.  
Sedona, AZ 86336

DATE: 04-08-24  
JOB NO:  
DRAWN BY: NYA  
DESIGNED BY: NYA  
SCALE:  
REVISIONS: DATE:  
SUBMITTED FOR: Not For Construction  
SHEET NO. L-2  
X OF

COPYRIGHT © 2024 BY NEILL AND YOUNG ASSOCIATES, L.L.C. ALL RIGHTS RESERVED. NO ALTERATIONS TO THESE PLANS ARE ALLOWED OTHER THAN AUTHORIZED NEILL AND YOUNG EMPLOYEES. THIS DOCUMENT IS THE SOLE PROPERTY OF NEILL AND YOUNG ASSOCIATES, L.L.C.



**City of Sedona Posse Grounds Park**  
**Pickleball Court Irrigation**  
 102 Roadrunner Dr.  
 Sedona, AZ 86336



THE CONTRACTOR SHALL BE RESPONSIBLE FOR SCHEDULING AN ONSITE VISIT WITH A REPRESENTATIVE FROM THE MANUFACTURER OF THE IRRIGATION BOOSTER PUMP TO REVIEW, INSPECT, AND CERTIFY THE PUMPS 100% COMPLETE OPERATION. NO SUBSTANTIAL COMPLETION WILL BE GRANTED BY THE PROJECT LANDSCAPE ARCHITECT UNTIL THIS SCOPE ITEM HAS BEEN SUCCESSFULLY ACHIEVED AND WRITTEN DOCUMENTATION HAS BEEN PROVIDED BY MANUFACTURER REPRESENTATIVE.

CONTACT FOR RAIN BIRD  
 NAME: MATTHEW HAITH  
 PHONE: 1 (914) 573-2552  
 EMAIL: mhaith@rainbird.com

**1** RAIN BIRD IRRIGATION BOOSTER PUMP  
 SCALE: N.T.S.

NOTES:

- DIMENSIONS SHOWN ARE MINIMUM RECOMMENDED CLEARANCES FROM PUMP STATION TO SLAB EDGE.
- SLAB DETAIL IS PROVIDED FOR ILLUSTRATION ONLY. THE ARCHITECT OR PROJECT ENGINEER SHOULD BE CONSULTED FOR CONSTRUCTION DETAIL.
- SLAB AND PUMP HOUSE MUST BE BUILT IN ACCORDANCE WITH LOCAL BUILDING CODES.

DATE	04-08-24	SCALE	N.T.S.
DRAWN BY	NYA	CHECKED BY	NYA
DESIGNED BY	NYA	DATE	04-08-24
SCALE	N.T.S.	TITLE	1-5 HP PUMP STATION
REVISIONS		SHEET NO.	1 OF 1



DATE:	04-08-24
JOB NO.:	
DRAWN BY:	NYA
DESIGNED BY:	NYA
SCALE:	
REVISIONS:	DATE:
△	
△	
△	
△	
SUBMITTED FOR:	Not For Construction
SHEET NO.	L-3
	X OF