



SEDONA IN MOTION

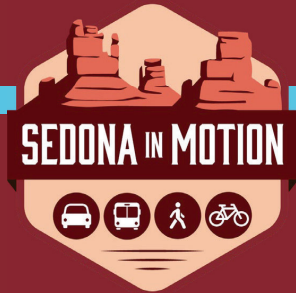
SETTING INTO MOTION THE CITY OF SEDONA'S
TRANSPORTATION MASTER PLAN



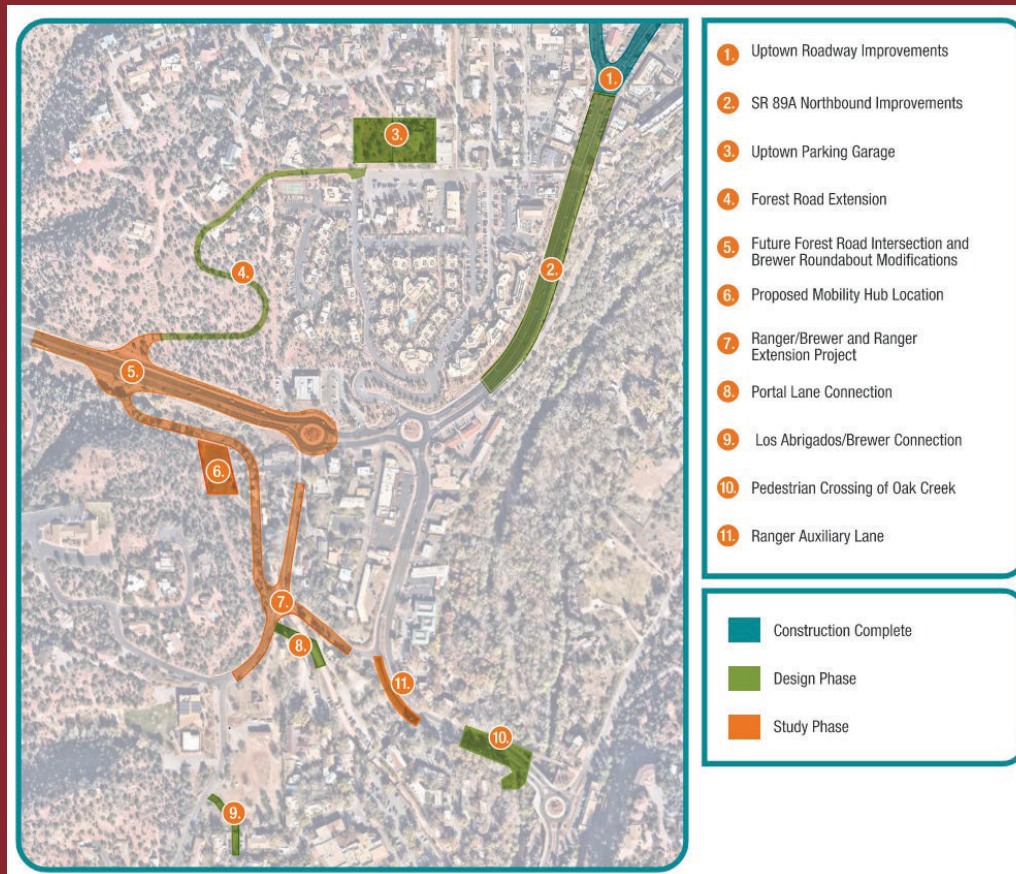
Agenda

- Update on Uptown District Projects
- Aerial Footage of Projects
- Data Dashboard
- VISSIM Models
- Uptown Northbound Traffic Control





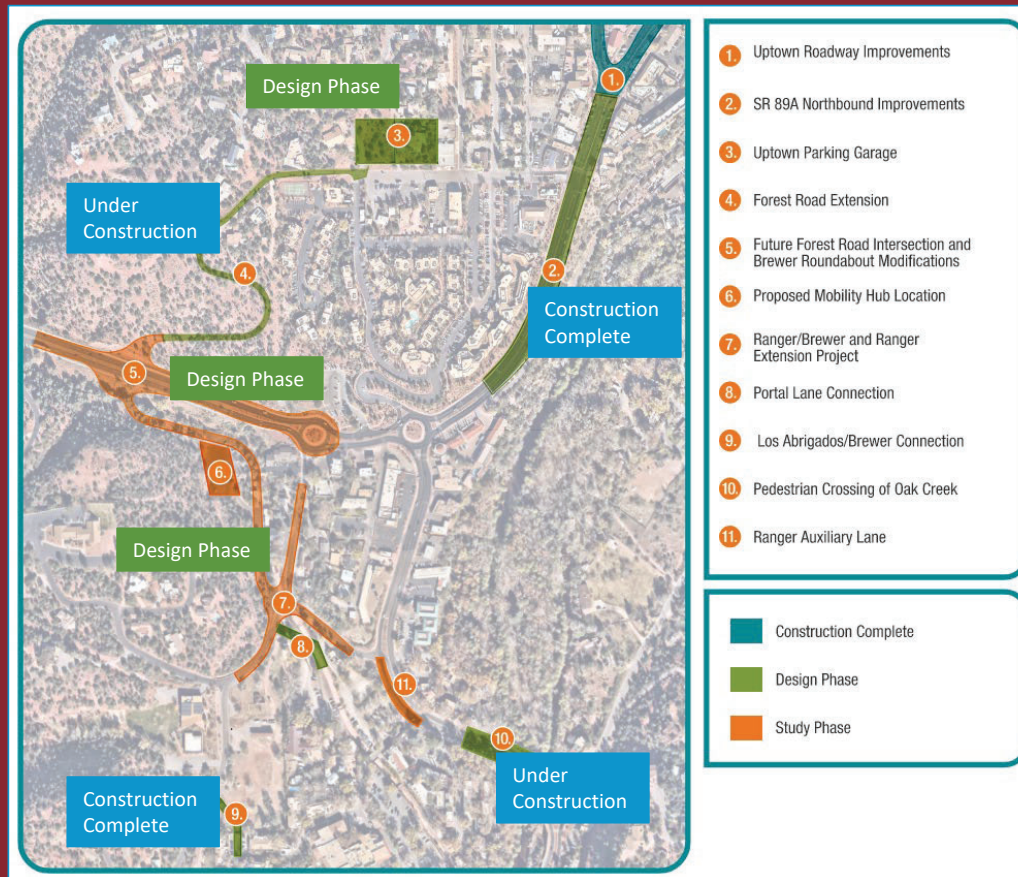
SIM Projects in Uptown District



WWW.SEDONAAZ.GOV/SIM



SIM Projects in Uptown District



WWW.SEDONAAZ.GOV/SIM

Brewer/SR 89A Corridor



Uptown Sedona to Ranger / Brewer Corridor Construction

- Forest Road Connection – SIM 5B Under Construction
- Uptown Sedona Parking Garage – Design
 - Uptown Parking Study - Complete
- 89A Northbound Improvements – Complete
- Amara Right Turn Lane - Complete
- Pedestrian Crossing of Oak Creek – SIM 4C – Under Construction
- Los Abrigados/Brewer – SIM 5C – Complete

Study / Design Phase

- Ranger / Brewer Intersection – SIM 5D
- Ranger Extension – SIM 5D
- Brewer RAB
- 89A/Ranger/Forest Intersection
- RIDE Exchange– SIM 7 and 8
- Ranger Auxiliary Lane – ADOT District Minor
- Portal Lane Connection – SIM 5A
- Y Metering/Slip Lanes – ADOT District Minor



WWW.SEDONAAZ.GOV/SIM

Corridor Renderings

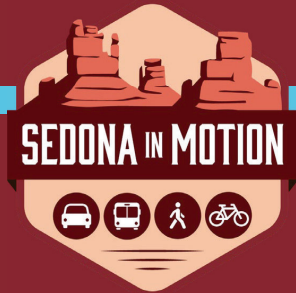


An aerial photograph of a city street grid, likely downtown Los Angeles, with a red rectangular box highlighting a specific area in the center. The text is overlaid on this highlighted area.

UPTOWN
NORTHBOUND IMPROVEMENTS
AND AHEAD RIGHT TURN

Data Dashboard

[SedonaInMotion v9 - Power BI](#)



Sedona in Motion (SIM) Improvement Projects Dashboard

Project Name

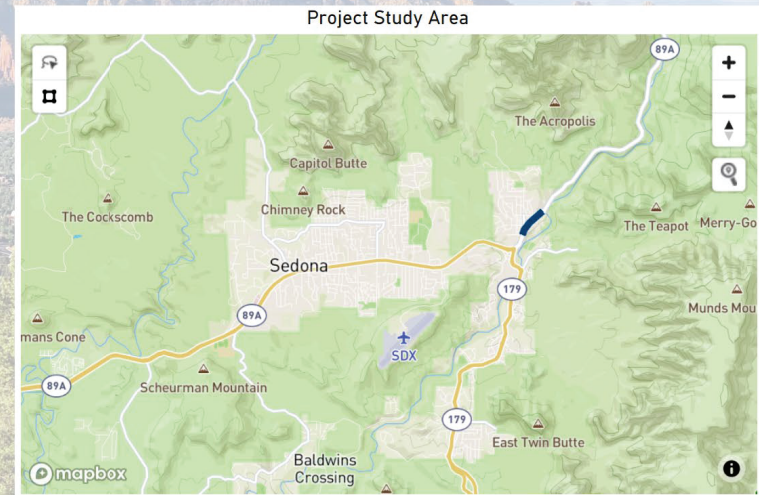
- SB Uptown Improvements
- Oak Creek Pedestrian Crossing
- NB Uptown Improvements
- Forest Road Extension
- Amara Right Turn Lane

Date Completed

September 2020

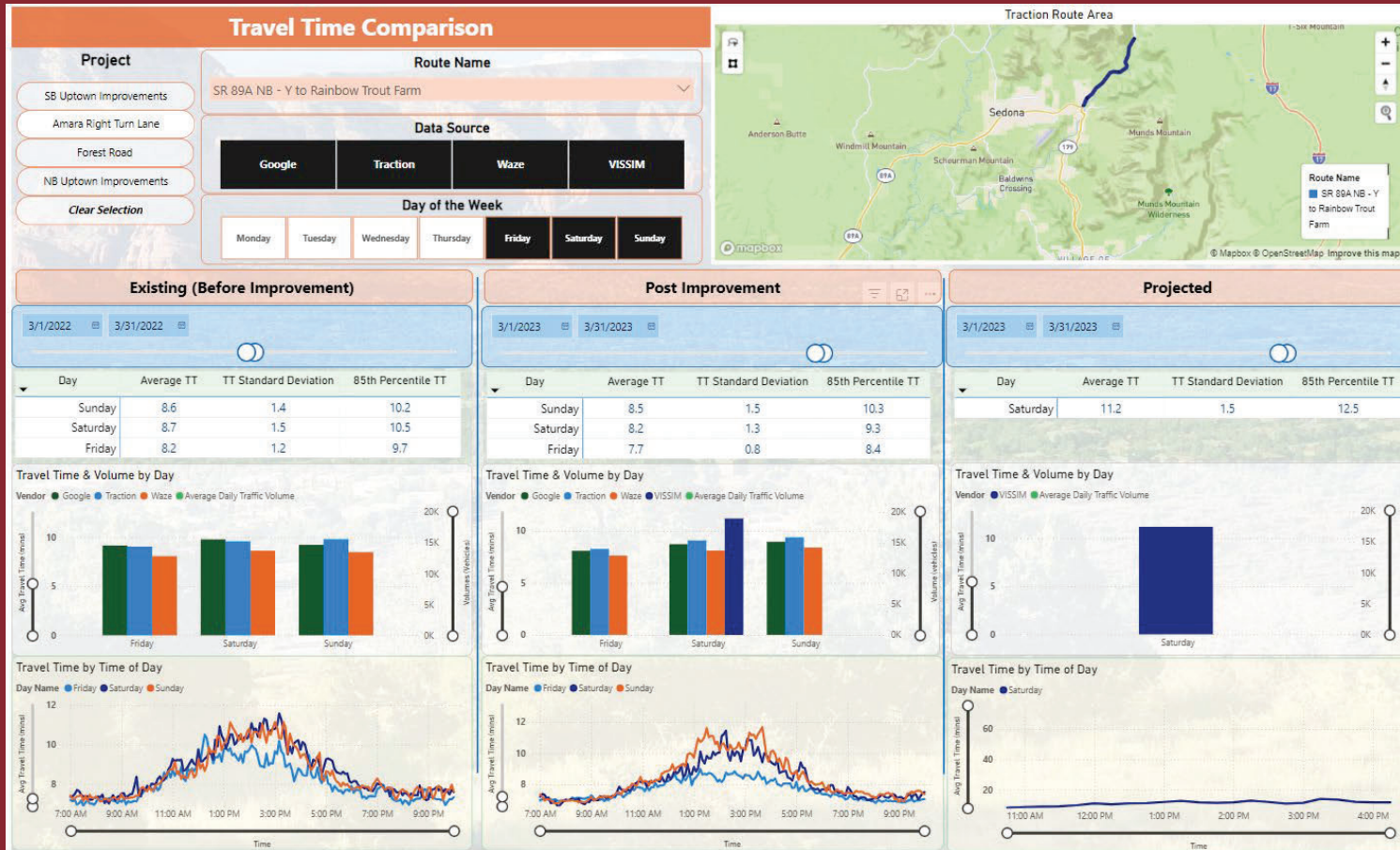
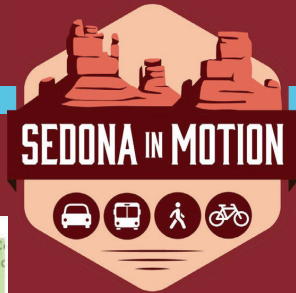
Project Description

Construction of 2nd southbound lane and raised median from Owenby to Forest. Two roundabouts at Jordan and Owenby.



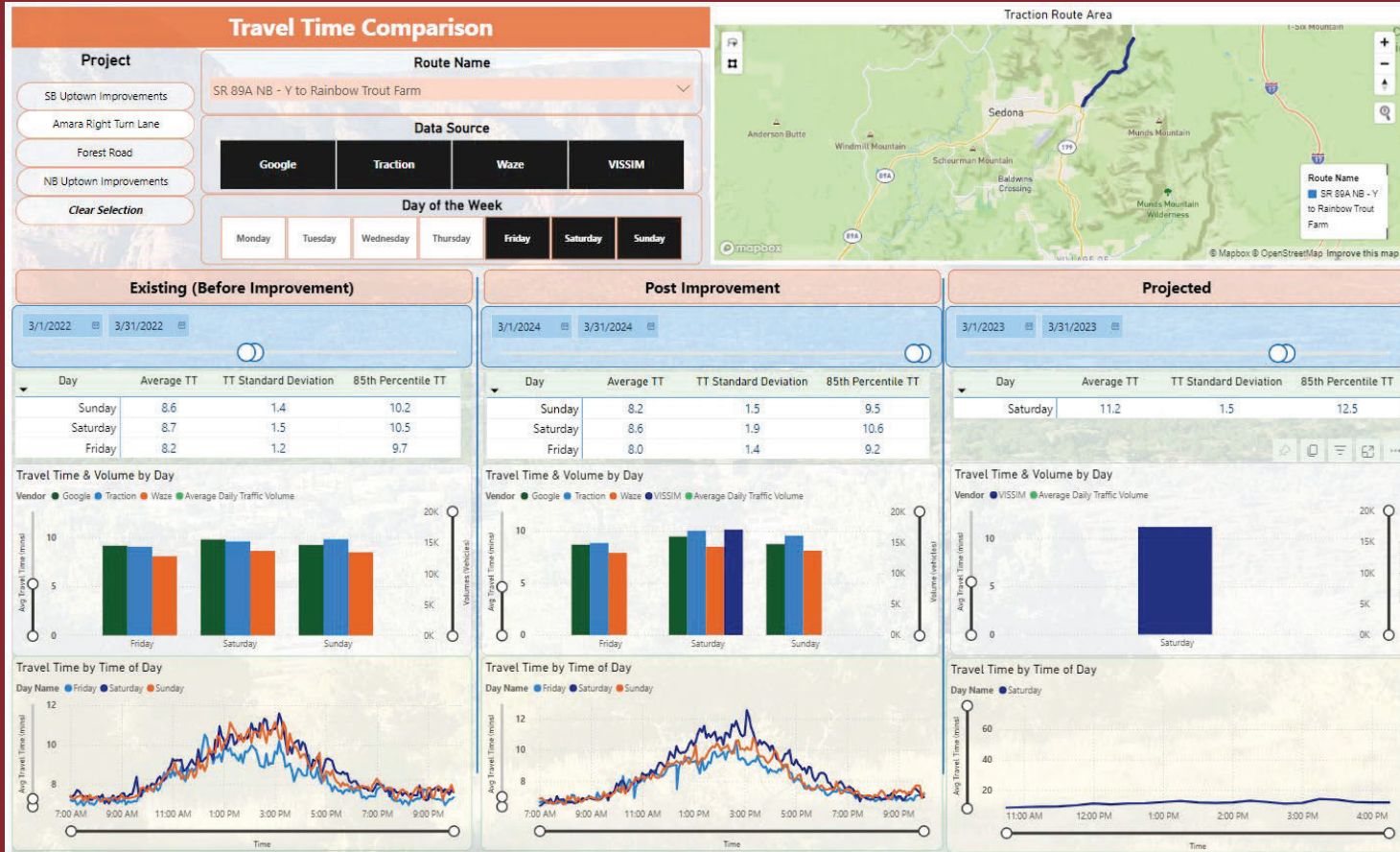
WWW.SEDONAAZ.GOV/SIM

Data Dashboard



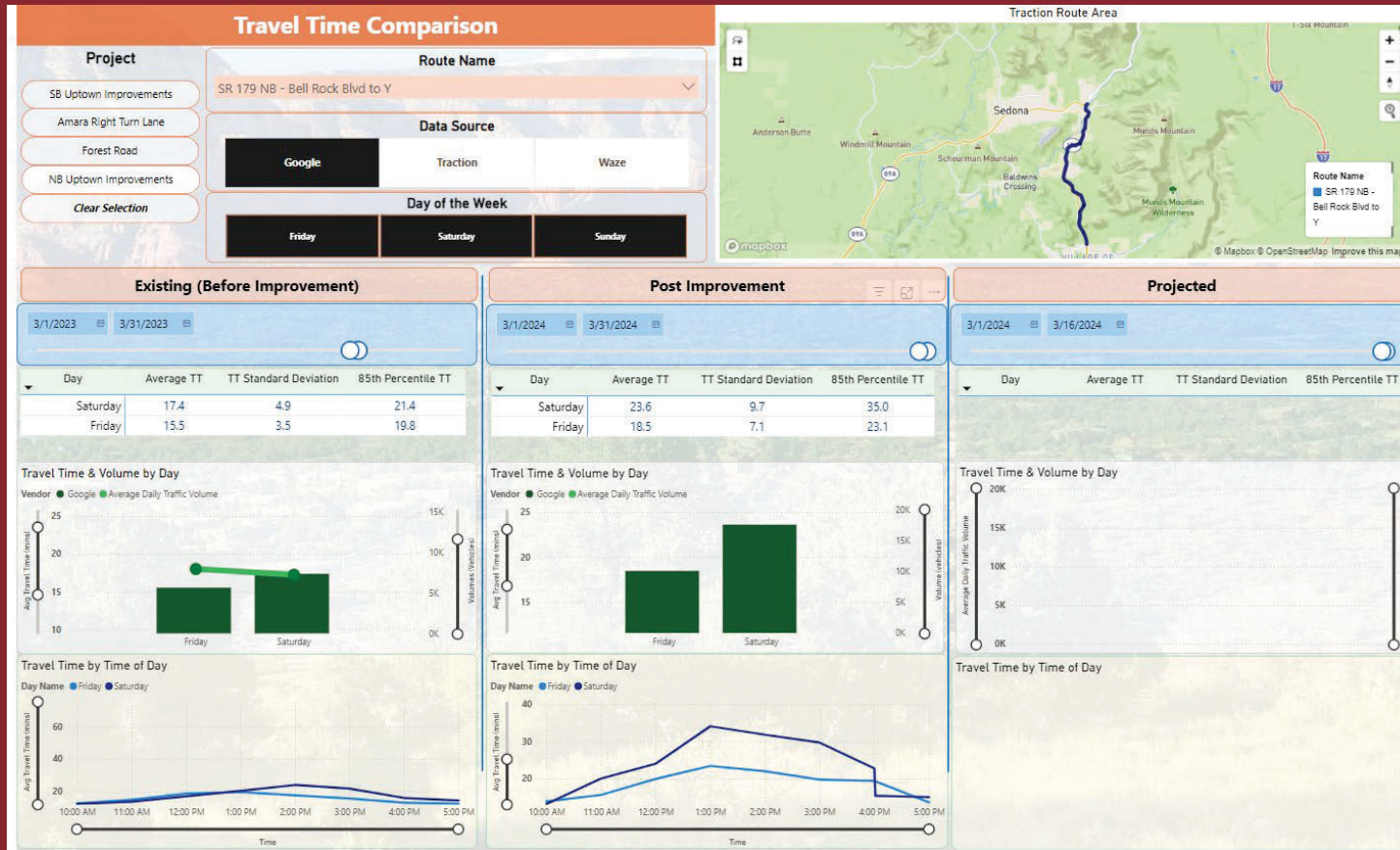
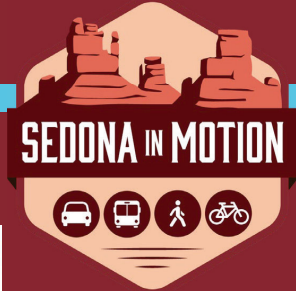
WWW.SEDONAAZ.GOV/SIM

Data Dashboard

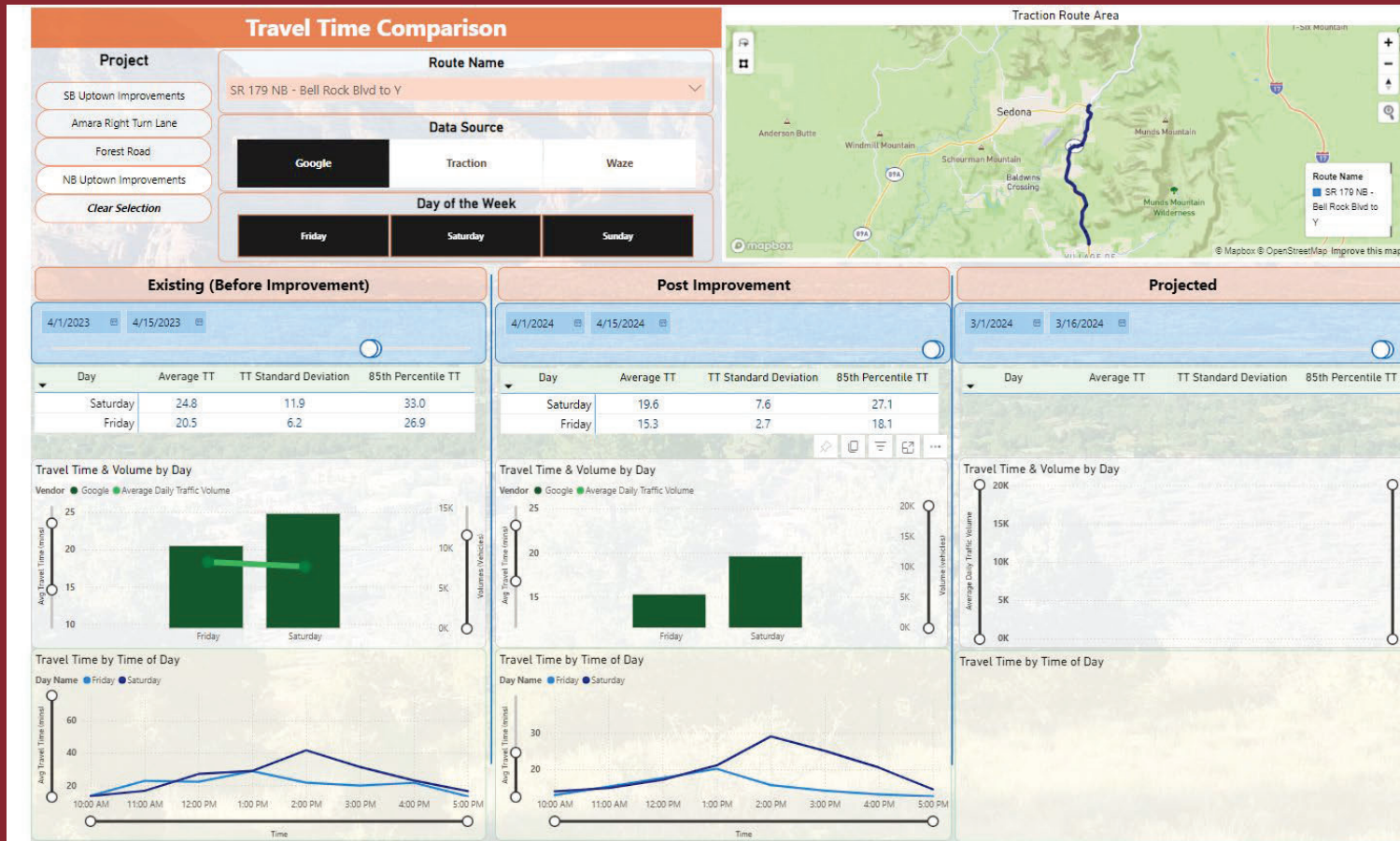
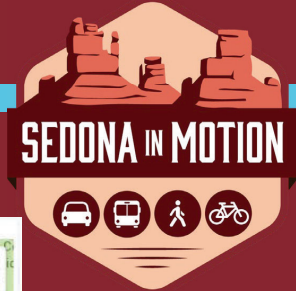


WWW.SEDONAAZ.GOV/SIM

Data Dashboard

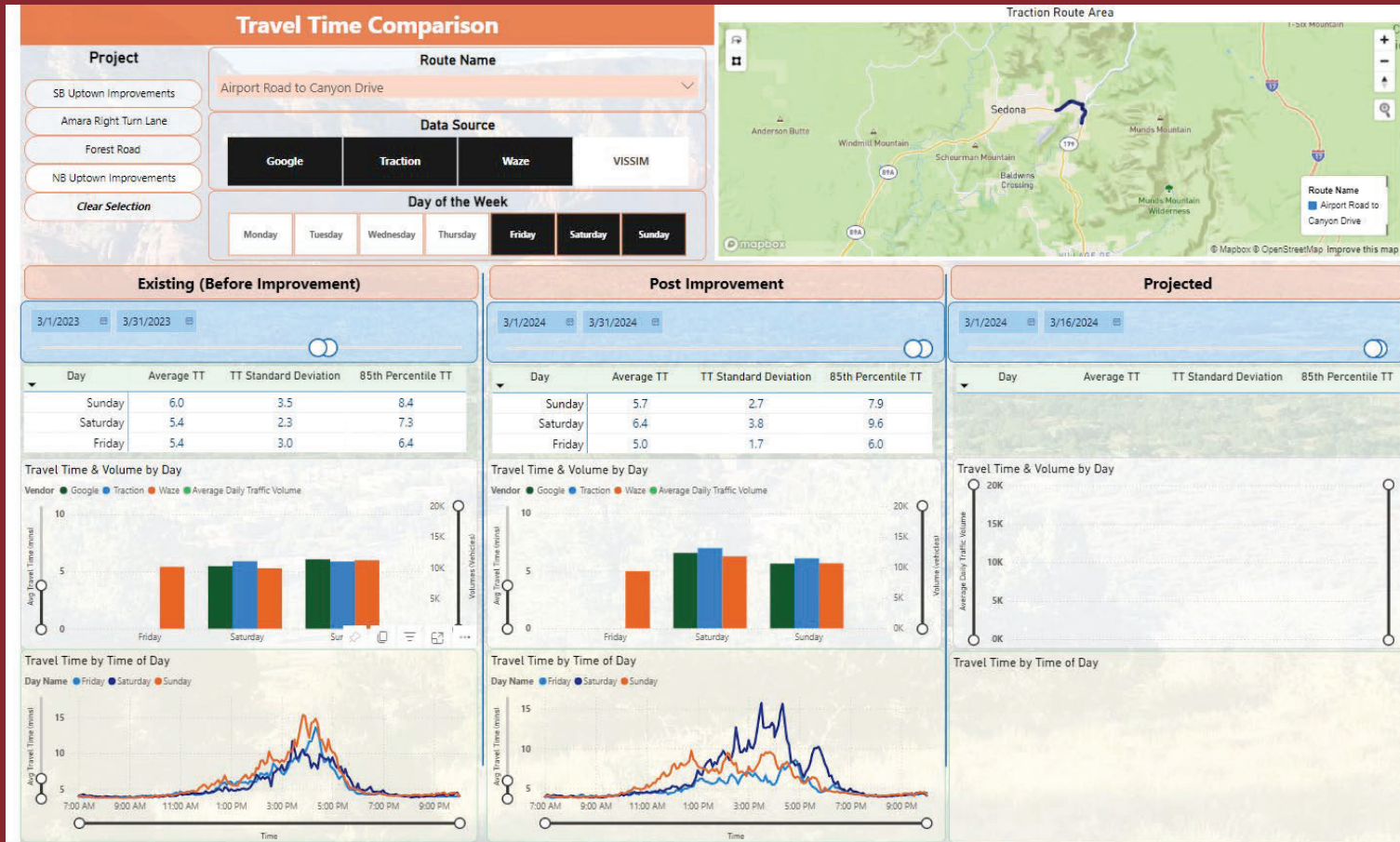
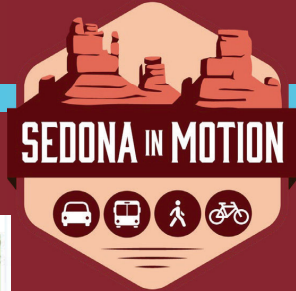


Data Dashboard



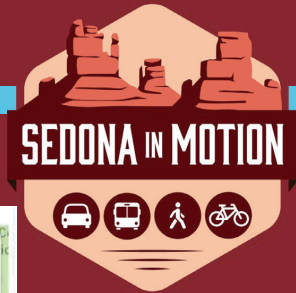
WWW.SEDONAAZ.GOV/SIM

Data Dashboard



WWW.SEDONAAZ.GOV/SIM

Data Dashboard



Travel Time Comparison

Project: SB Uptown Improvements, Amara Right Turn Lane, Forest Road, NB Uptown Improvements. **Clear Selection**

Route Name: Airport Road to Canyon Drive

Data Source: Google, Traction, Waze, VISSIM

Day of the Week: Monday, Tuesday, Wednesday, Thursday, **Friday**, Saturday, Sunday

Traction Route Area Map: Shows the route from Sedona to Canyon Drive.

Existing (Before Improvement)

4/15/2023

Day	Average TT	TT Standard Deviation	85th Percentile TT
Sunday	5.8	2.8	7.6
Saturday	7.2	4.5	12.6
Friday	7.4	5.0	12.8

Travel Time & Volume by Day

Travel Time by Time of Day

Post Improvement

4/1/2024

Day	Average TT	TT Standard Deviation	85th Percentile TT
Sunday	5.3	1.5	6.9
Saturday	5.3	1.7	7.2
Friday	4.8	1.3	5.7

Travel Time & Volume by Day

Travel Time by Time of Day

Projected

3/1/2024

Day	Average TT	TT Standard Deviation	85th Percentile TT
Sunday	5.3	1.5	6.9
Saturday	5.3	1.7	7.2
Friday	4.8	1.3	5.7

Travel Time & Volume by Day

Travel Time by Time of Day



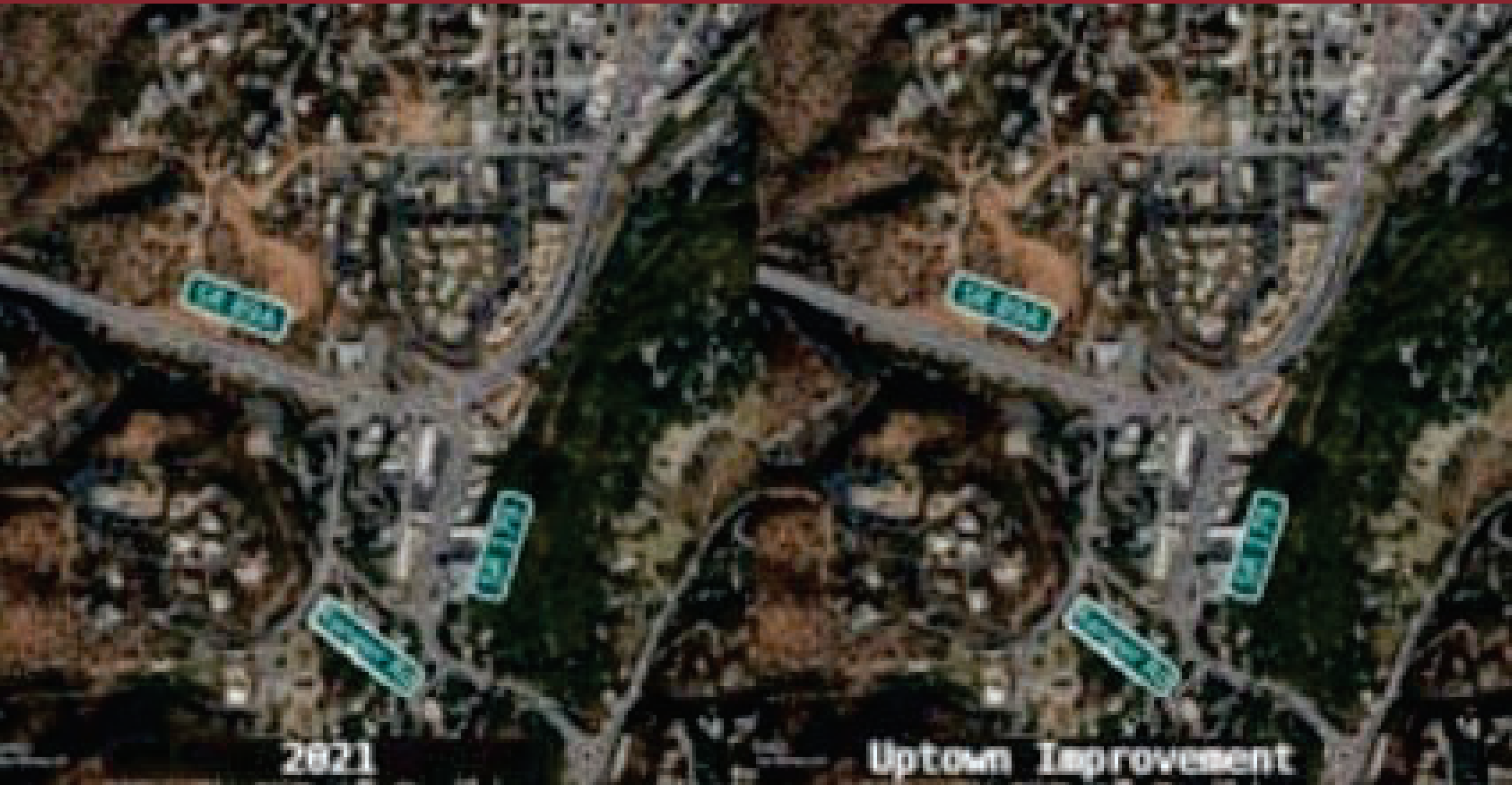
WWW.SEDONAAZ.GOV/SIM



VISSIM Modeling

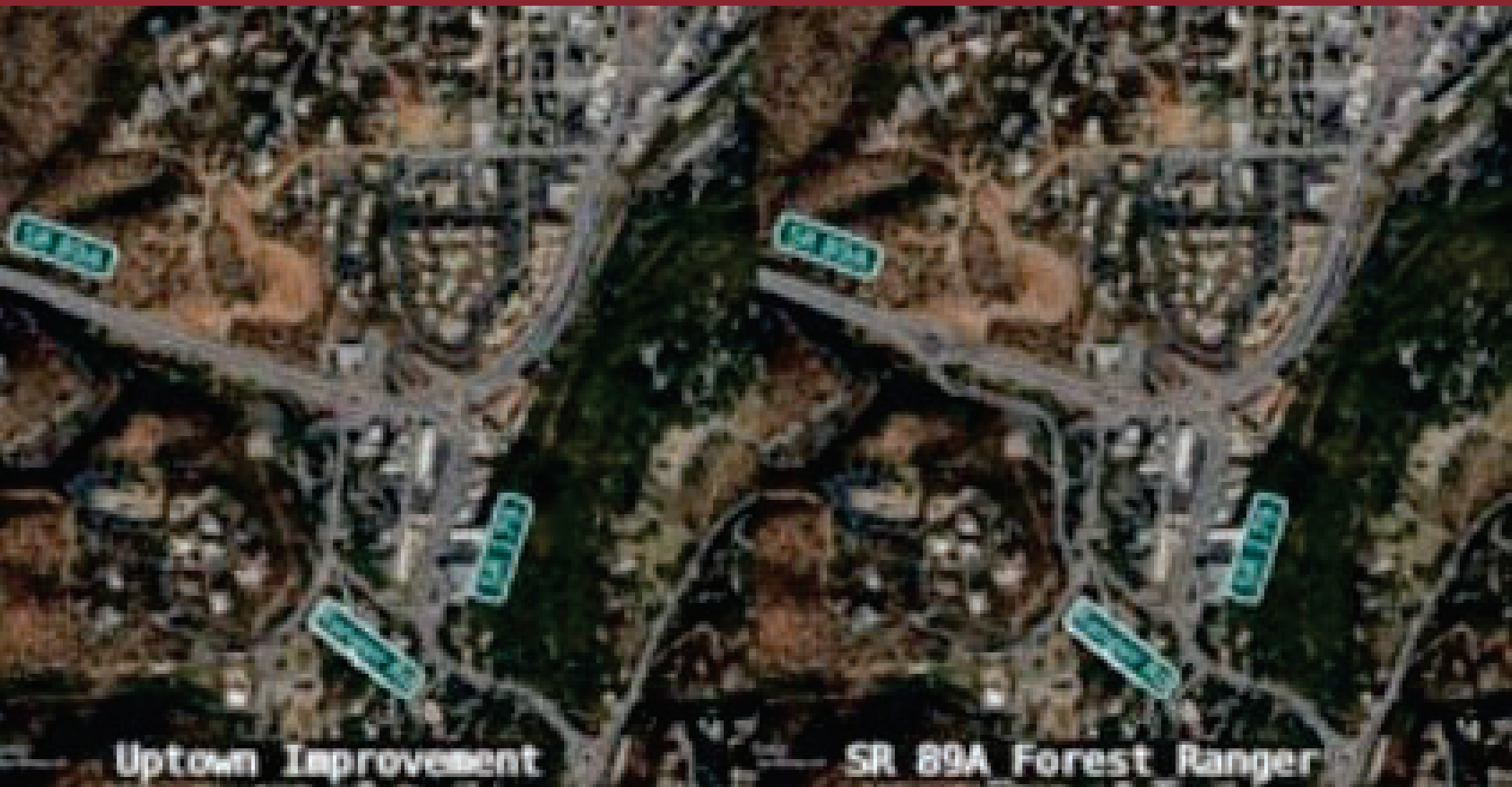
- 2021 Existing Condition
- 2024 Model – NB and Amara RT
- Future Improvements (Modeling)
 - Forest
 - Ranger/Brewer Intersection
 - SR 89A/Ranger/Forest Roundabout

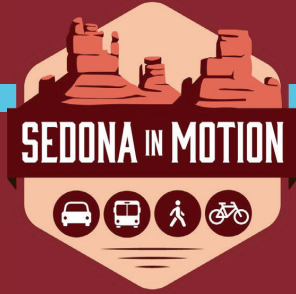






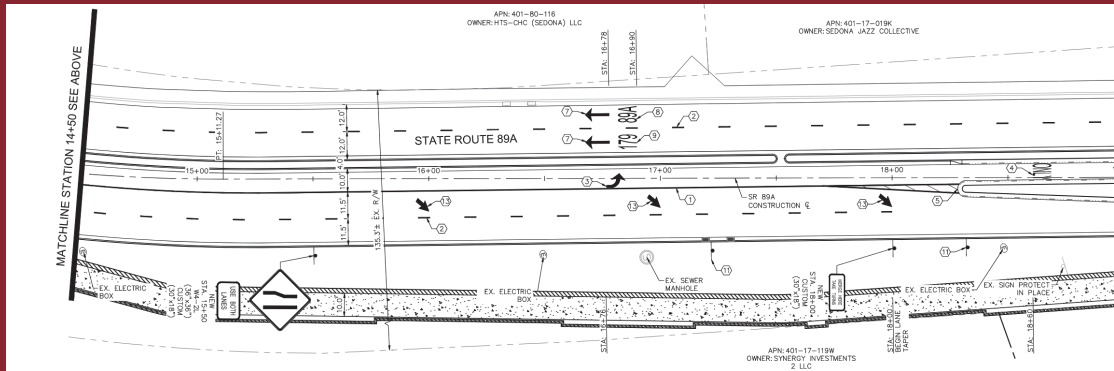






NB Improvement Post Construction

- “Merge” Condition between Forest and Jordan
- NB Traffic not utilizing the Zipper Merge



NB Traffic – Zipper Merge



ATION



NB Traffic – No Zipper Merge

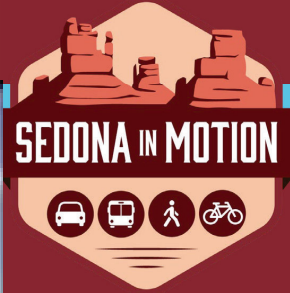


North of Forest



WWW.SEDONAAZ.GOV/SIM

North of Forest



WWW.SEDONAAZ.GOV/SIM

2024-04-04 1:12:51 PM

Next Steps



Continue to monitor traffic flow through NB Improvements.

Regular updates and expansion of the Data Dashboard.



Questions



WWW.SEDONAAZ.GOV/SIM



SEDONA IN MOTION

SETTING INTO MOTION THE CITY OF SEDONA'S
TRANSPORTATION MASTER PLAN

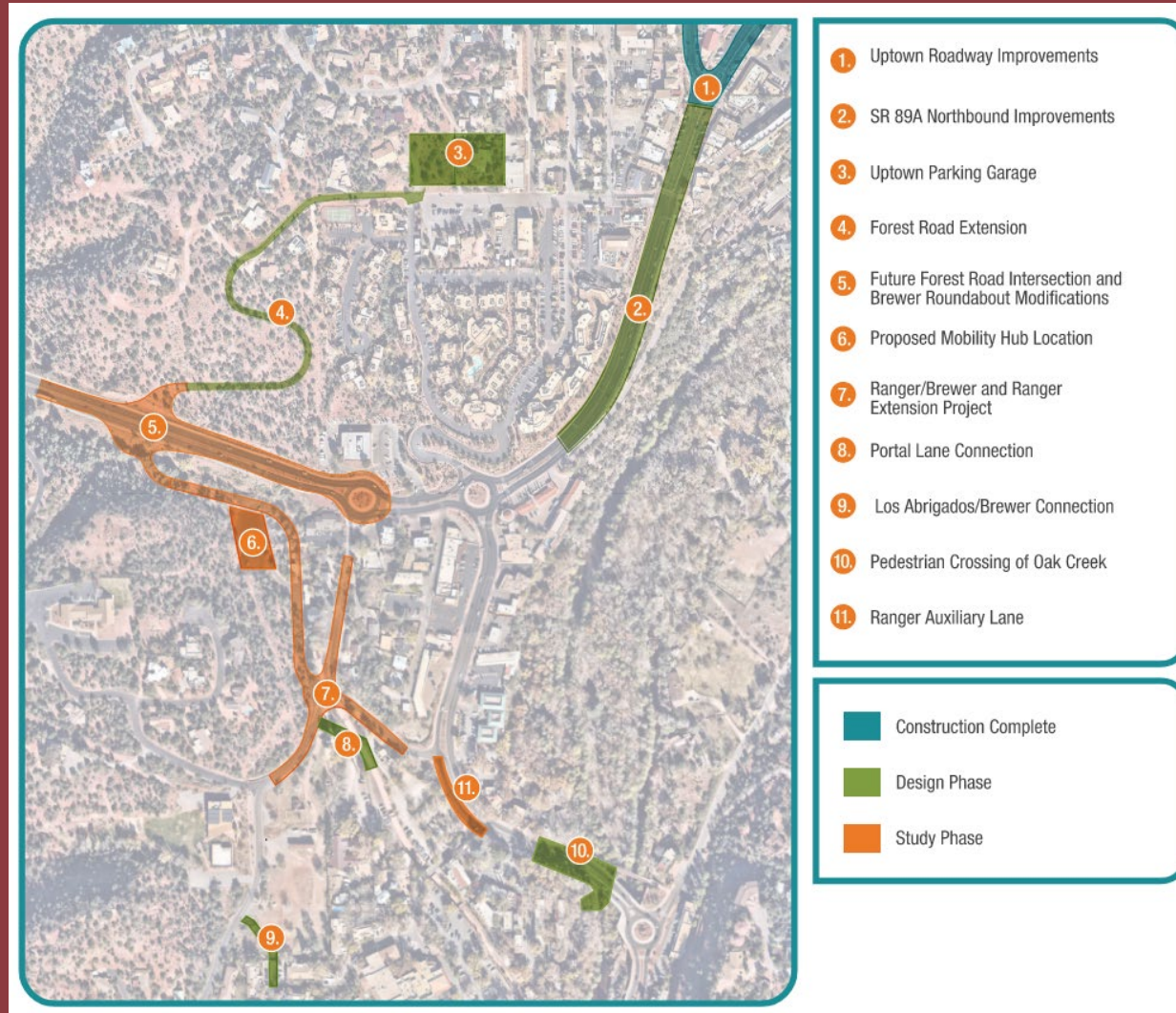


Agenda

- Update on Uptown District Projects
- Aerial Footage of Projects
- Data Dashboard
- VISSIM Models
- Uptown Northbound Traffic Control



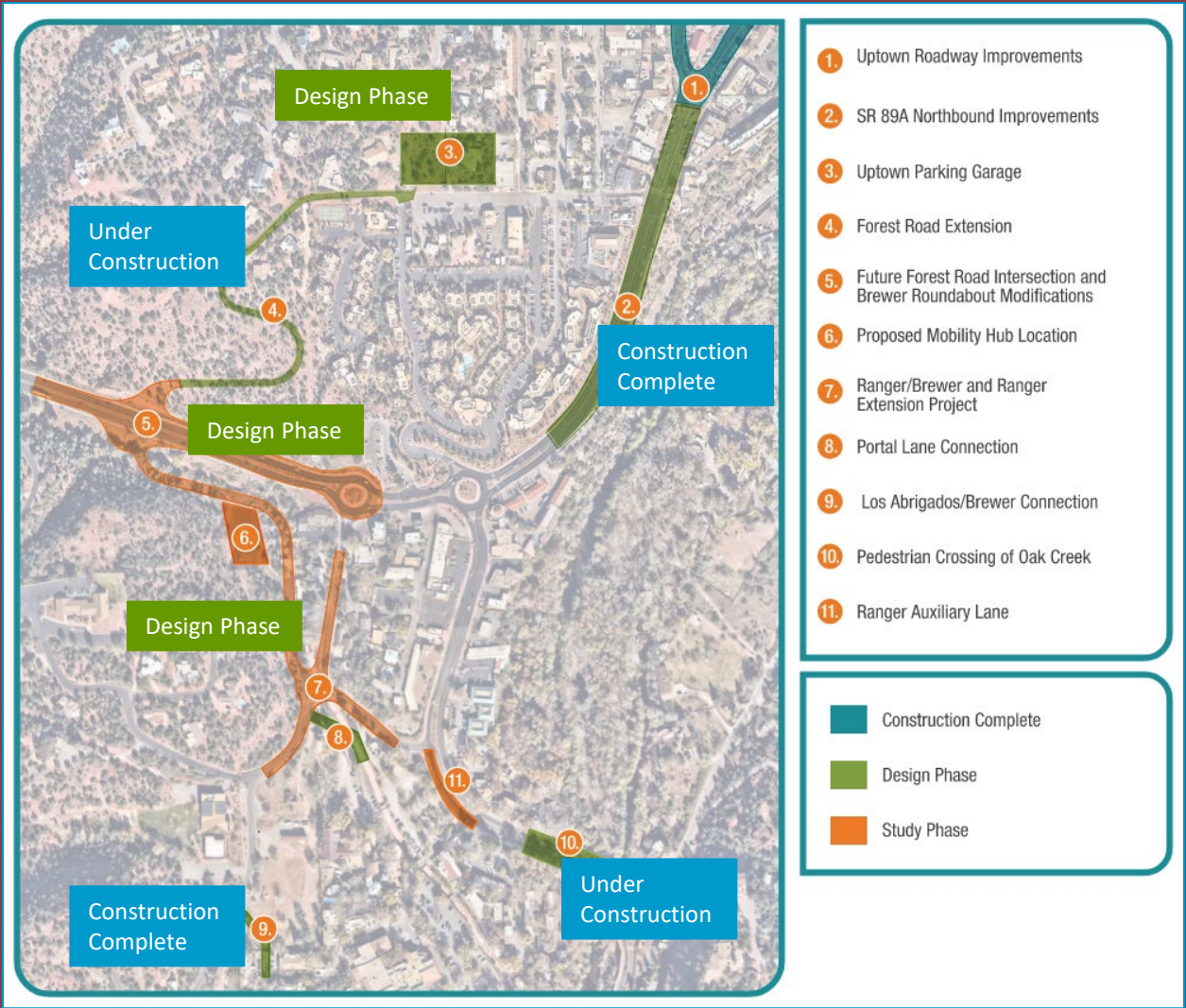
SIM Projects in Uptown District



1. Uptown Roadway Improvements
2. SR 89A Northbound Improvements
3. Uptown Parking Garage
4. Forest Road Extension
5. Future Forest Road Intersection and Brewer Roundabout Modifications
6. Proposed Mobility Hub Location
7. Ranger/Brewer and Ranger Extension Project
8. Portal Lane Connection
9. Los Abridados/Brewer Connection
10. Pedestrian Crossing of Oak Creek
11. Ranger Auxiliary Lane

- Construction Complete
- Design Phase
- Study Phase

SIM Projects in Uptown District





Brewer/SR 89A Corridor

Uptown Sedona to Ranger / Brewer Corridor Construction

- Forest Road Connection – SIM 5B Under Construction
- Uptown Sedona Parking Garage – Design
 - Uptown Parking Study - Complete
- 89A Northbound Improvements – Complete
- Amara Right Turn Lane - Complete
- Pedestrian Crossing of Oak Creek – SIM 4C – Under Construction
- Los Abrigados/Brewer – SIM 5C – Complete

Study / Design Phase

- Ranger / Brewer Intersection – SIM 5D
- Ranger Extension – SIM 5D
- Brewer RAB
- 89A/Ranger/Forest Intersection
- RIDE Exchange– SIM 7 and 8
- Ranger Auxiliary Lane – ADOT District Minor
- Portal Lane Connection – SIM 5A
- Y Metering/Slip Lanes – ADOT District Minor



Corridor Renderings



An aerial photograph of a city street grid, showing a mix of wide boulevards and narrower streets. A teal-colored rectangular box is superimposed in the center of the image, containing white text. The text is centered and reads: 'UPTOWN' in a large, bold, sans-serif font, followed by 'NORTHBOUND IMPROVEMENTS' and 'AND AHEAD DIRECTION' in a smaller, all-caps, sans-serif font on the lines below.

UPTOWN
NORTHBOUND IMPROVEMENTS
AND AHEAD DIRECTION

Data Dashboard

[SedonaInMotion v9 - Power BI](#)



Sedona in Motion (SIM) Improvement Projects Dashboard

Project Name

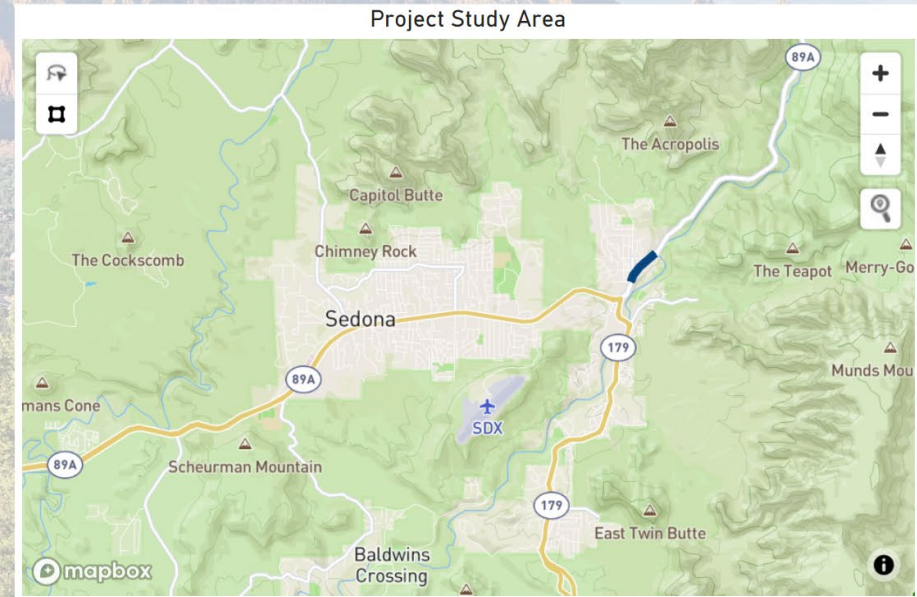
- SB Uptown Improvements
- Oak Creek Pedestrian Crossing
- NB Uptown Improvements
- Forest Road Extension
- Amara Right Turn Lane

Date Completed

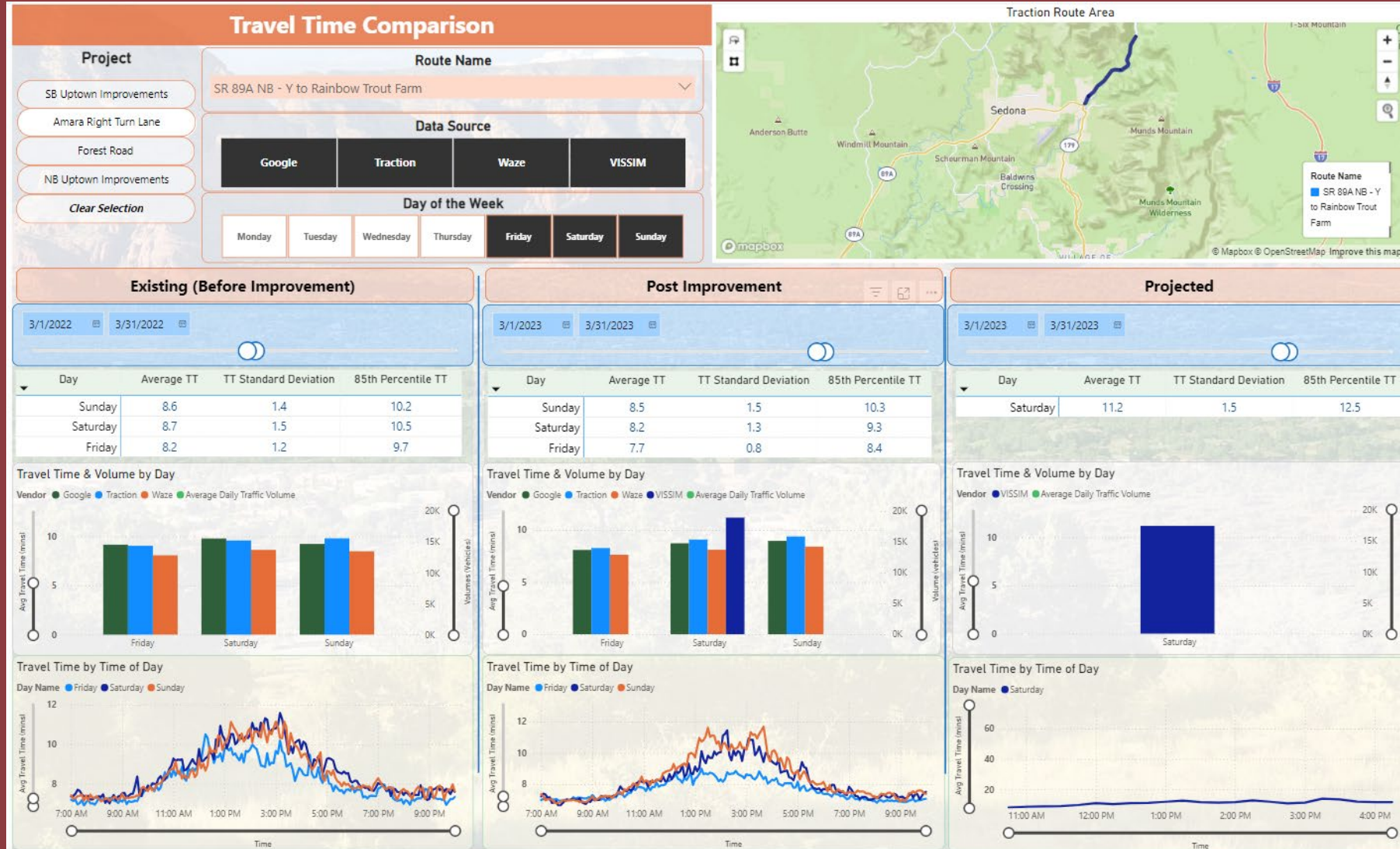
September 2020

Project Description

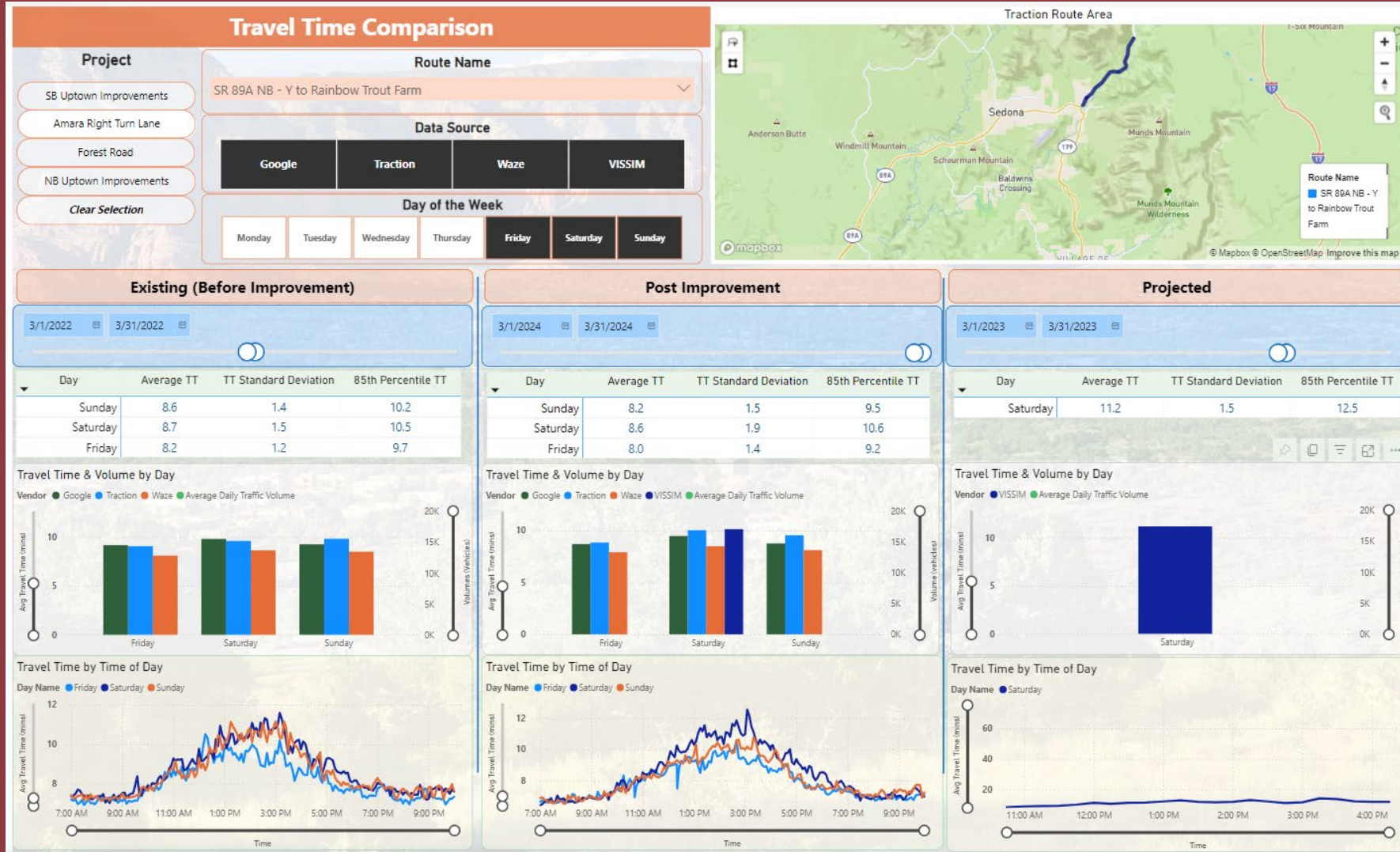
Construction of 2nd southbound lane and raised median from Owenby to Forest. Two roundabouts at Jordan and Owenby.



Data Dashboard



Data Dashboard



Data Dashboard



Travel Time Comparison

Project

- SB Uptown Improvements
- Amara Right Turn Lane
- Forest Road
- NB Uptown Improvements
- Clear Selection

Route Name

SR 179 NB - Bell Rock Blvd to Y

Data Source

Google Traction Waze

Day of the Week

Friday Saturday Sunday

Traction Route Area

Existing (Before Improvement)

3/1/2023 - 3/31/2023

Day	Average TT	TT Standard Deviation	85th Percentile TT
Saturday	17.4	4.9	21.4
Friday	15.5	3.5	19.8

Travel Time & Volume by Day

Travel Time by Time of Day

Post Improvement

3/1/2024 - 3/31/2024

Day	Average TT	TT Standard Deviation	85th Percentile TT
Saturday	23.6	9.7	35.0
Friday	18.5	7.1	23.1

Travel Time & Volume by Day

Travel Time by Time of Day

Projected

3/1/2024 - 3/16/2024

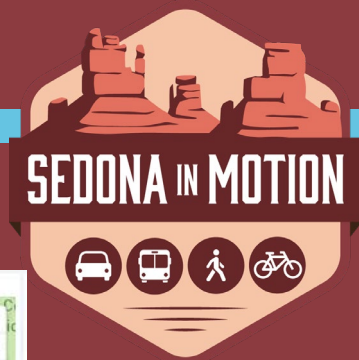
Day	Average TT	TT Standard Deviation	85th Percentile TT
Saturday	23.6	9.7	35.0
Friday	18.5	7.1	23.1

Travel Time & Volume by Day

Travel Time by Time of Day



Data Dashboard



Travel Time Comparison

Project

SB Uptown Improvements

Amara Right Turn Lane

Forest Road

NB Uptown Improvements

Clear Selection

Route Name

SR 179 NB - Bell Rock Blvd to Y

Data Source

Google Traction Waze

Day of the Week

Friday Saturday Sunday

Existing (Before Improvement)

4/1/2023 4/15/2023

Day	Average TT	TT Standard Deviation	85th Percentile TT
Saturday	24.8	11.9	33.0
Friday	20.5	6.2	26.9

Travel Time & Volume by Day

Vendor: Google, Average Daily Traffic Volume

Travel Time by Time of Day

Day Name: Friday, Saturday

Post Improvement

4/1/2024 4/15/2024

Day	Average TT	TT Standard Deviation	85th Percentile TT
Saturday	19.6	7.6	27.1
Friday	15.3	2.7	18.1

Travel Time & Volume by Day

Vendor: Google, Average Daily Traffic Volume

Travel Time by Time of Day

Day Name: Friday, Saturday

Projected

3/1/2024 3/16/2024

Day	Average TT	TT Standard Deviation	85th Percentile TT

Travel Time & Volume by Day

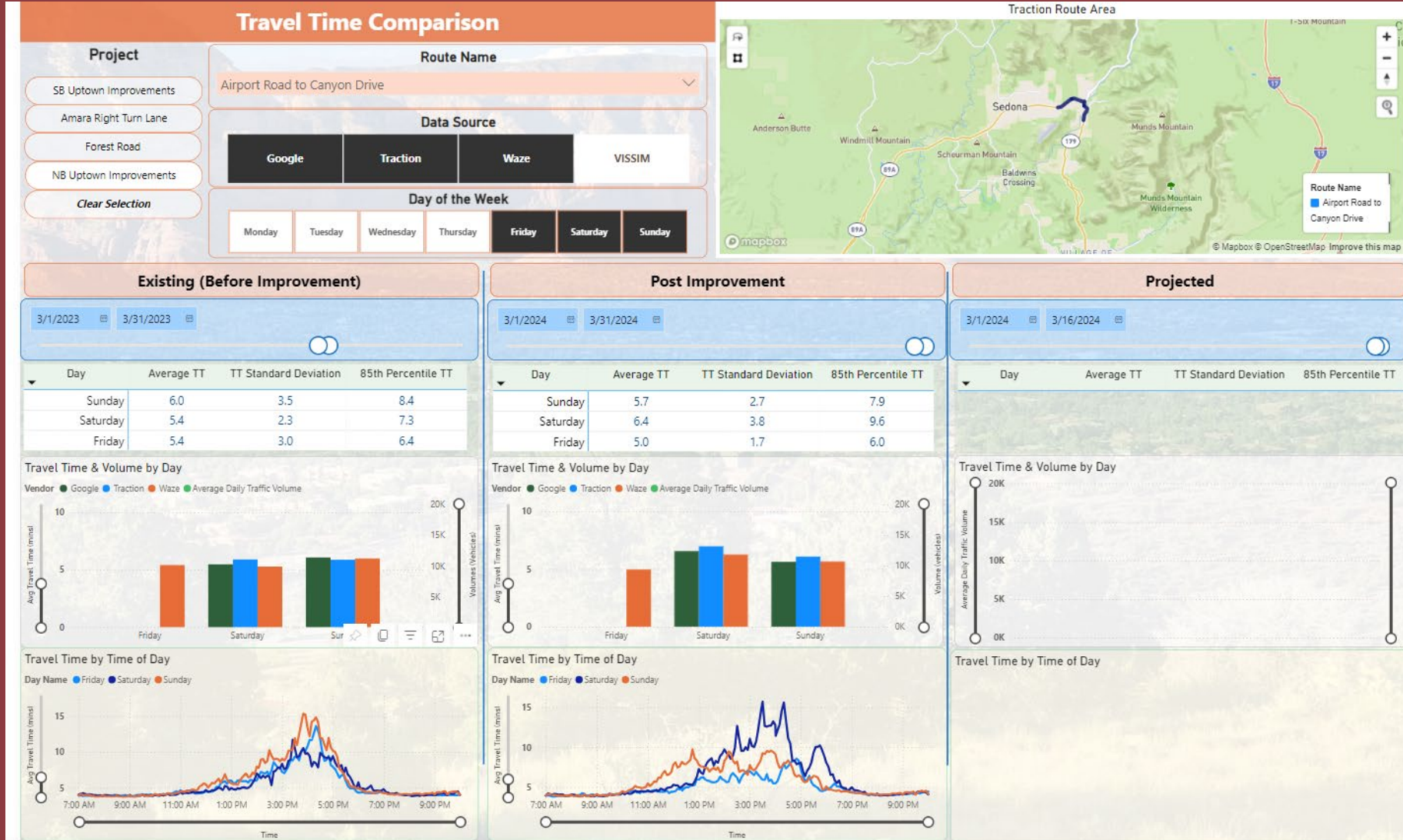
Average Daily Traffic Volume

Travel Time by Time of Day

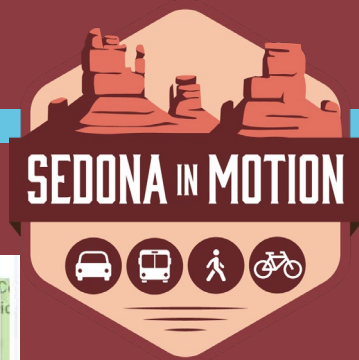
Day Name: Friday, Saturday



Data Dashboard



Data Dashboard



Travel Time Comparison

Project

- SB Uptown Improvements
- Amara Right Turn Lane
- Forest Road
- NB Uptown Improvements
- Clear Selection

Route Name

Airport Road to Canyon Drive

Data Source

Google Traction Waze VISSIM

Day of the Week

Monday Tuesday Wednesday Thursday Friday Saturday Sunday

Existing (Before Improvement)

4/1/2023 - 4/15/2023

Day	Average TT	TT Standard Deviation	85th Percentile TT
Sunday	5.8	2.8	7.6
Saturday	7.2	4.5	12.6
Friday	7.4	5.0	12.8

Travel Time & Volume by Day

Travel Time by Time of Day

Post Improvement

4/1/2024 - 4/15/2024

Day	Average TT	TT Standard Deviation	85th Percentile TT
Sunday	5.3	1.5	6.9
Saturday	5.3	1.7	7.2
Friday	4.8	1.3	5.7

Travel Time & Volume by Day

Travel Time by Time of Day

Projected

3/1/2024 - 3/16/2024

Day	Average TT	TT Standard Deviation	85th Percentile TT
Sunday	5.3	1.5	6.9
Saturday	5.3	1.7	7.2
Friday	4.8	1.3	5.7

Travel Time & Volume by Day

Travel Time by Time of Day





VISSIM Modeling

- 2021 Existing Condition
- 2024 Model – NB and Amara RT
- Future Improvements (Modeling)
 - Forest
 - Ranger/Brewer Intersection
 - SR 89A/Ranger/Forest Roundabout





2021

Uptown Improvement





2024 NB Improvements

2024 Model



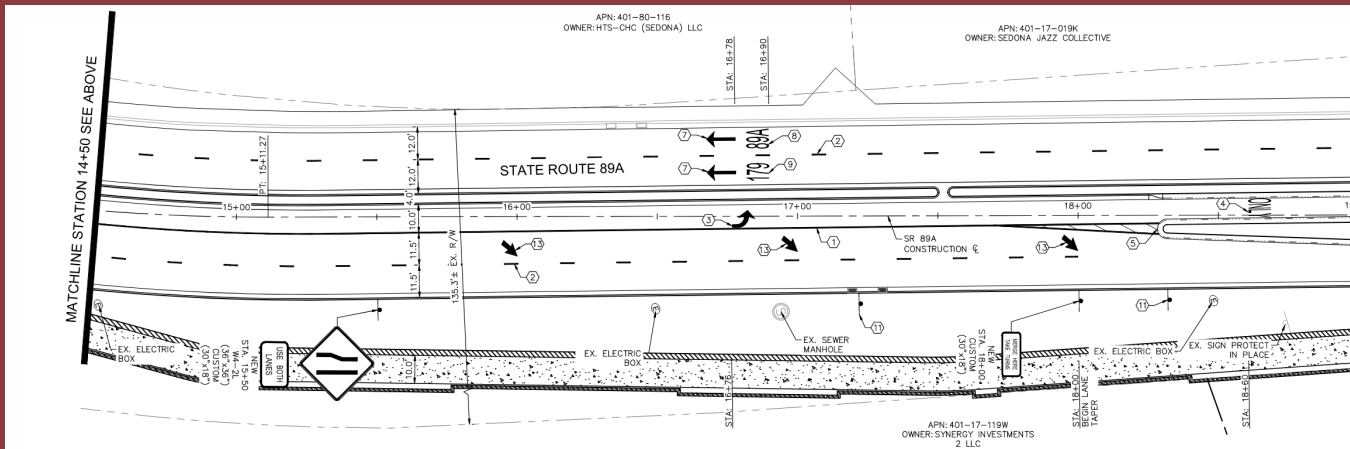


Uptown Improvement

SR 89A Forest Ranger

NB Improvement Post Construction

- “Merge” Condition between Forest and Jordan
- NB Traffic not utilizing the Zipper Merge



NB Traffic – Zipper Merge



OTION



NB Traffic – No Zipper Merge







2024-04-04 11:28:17 AM



Next Steps

Continue to monitor traffic flow through NB Improvements.

Regular updates and expansion of the Data Dashboard.



Questions

