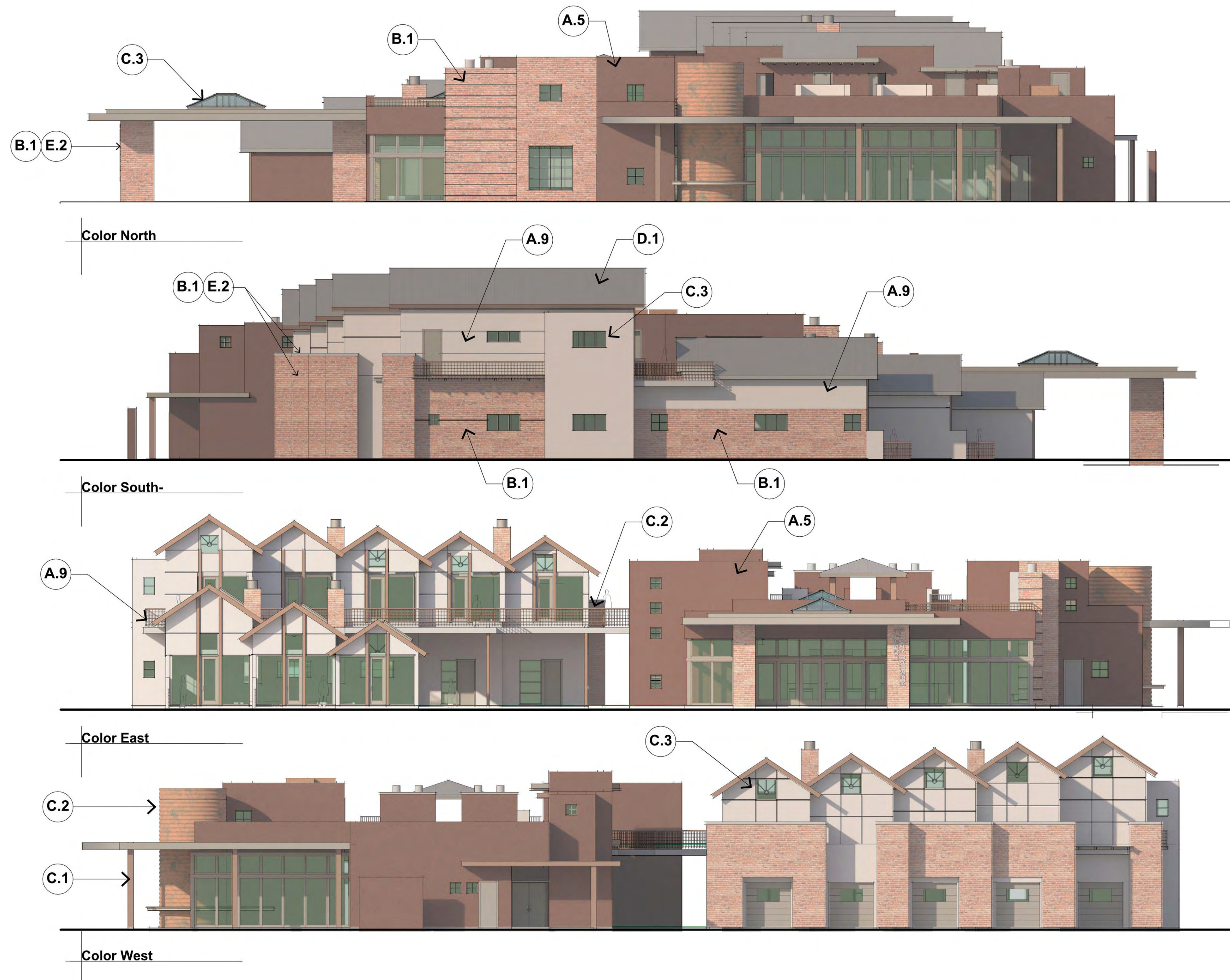


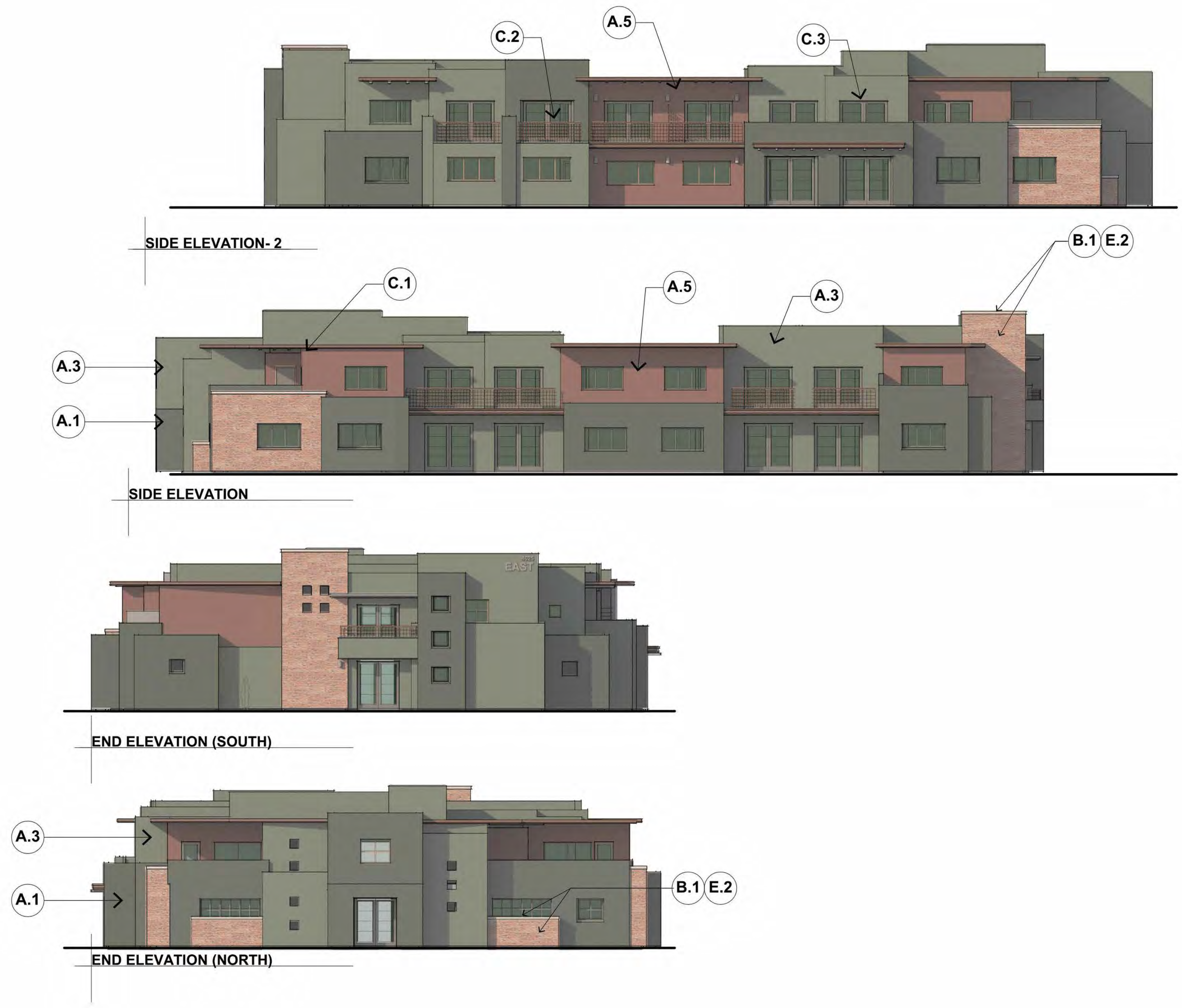
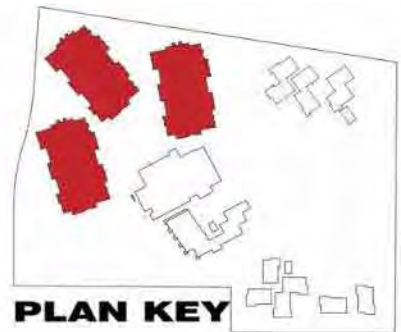
EXTERIOR FINISH NOTES:

- PAINT: SHERWING WILLIAMS PAINT
- STUCCO: SYNTHETIC INTEGRAL COLOR; SAND FLOAT FINISH
- MASONRY: ROMAN BRICK WITH CAST CONCRETE CAP; AUTHENTIC SEDONA NATIVE MIX OF RIVER ROCK & REC CLIFF STONE
- FASCIA: BRONZE ALUMINUM
- OVERHANG & CANOPY: WOOD T&G SOFFIT WITH STEEL TUB BEAMS & COLUMNS
- WINDOW/DOOR FRAME: BRONZE ALUMINUM
- LOW SLOPE ROOF: SEAMLESS WITH ACRYLIC FINISH SW70747 [LRV-13]
- PITCH ROOF: RAISED SEAMED METAL WITH MATCHING FASCIA TRIM [TREEHOUSE]; GRAY TERRACOTTA ROOF TILE "LUDOWICI", LUDOSLATE [MULTIFAMILY]
- HANDRAILS/GUARDRAILS: PAINTED METAL RAILINGS (STEEL PIPE FRAME WITH PERFORATED METAL PANEL)
- CONCRETE PAVING: INTEGRAL COLOR EXPOSED SAND FINISH WITH SCORING



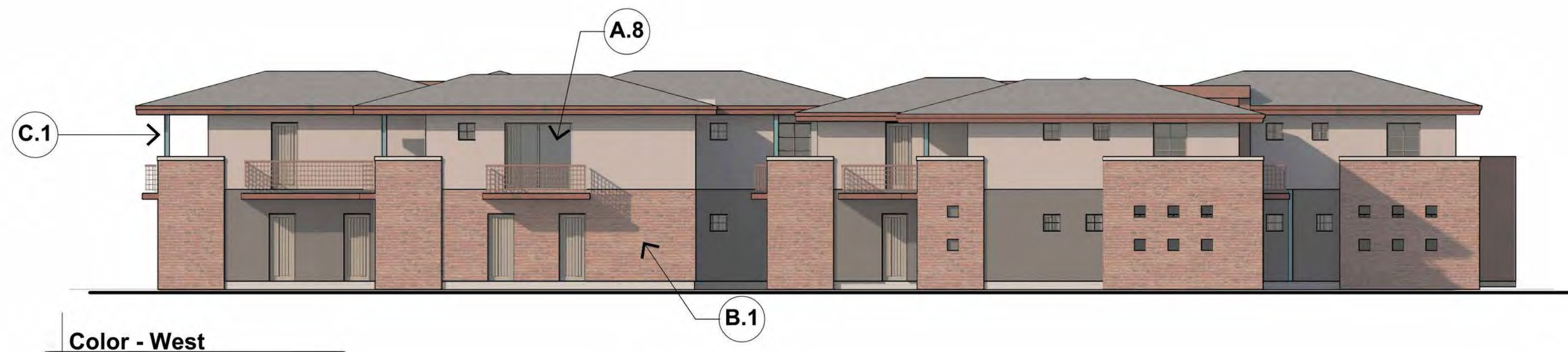
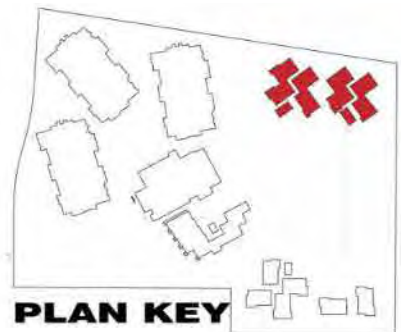
A.1 SW-6174	A.2 SW-2846	A.3 SW-7735
STUCCO.01- LRV.5	STUCCO.02- LRV.9	STUCCO.03- LRV.10
A.4 SW-6069	A.5 SW-6090	A.6 SW-6068
STUCCO.04- LRV.5	STUCCO.05- LRV.7	STUCCO.06- LRV.10
A.7 SW-7020	A.8 SW-7047	A.9 SW-7019
STUCCO.07- LRV.7	STUCCO.08- LRV.13	STUCCO.09- LRV.17
B.1 Roman Brick wall 1	B.2 Stone wall 1	B.3 Stone wall 2
ROMAN BRICK.01	STONE.01	STONE.02
C.1 Metal Material -1	C.2 Metal Material -2	C.3 Metal Material -3
METAL.01	METAL.02	METAL.03
D.1 Roof - Gray Metal	D.2 Roof - Slate composite	D.3 Roof - Flat
ROOF.01	ROOF.02	ROOF.03
E.1 Concrete Paving	E.2 Concrete Wall Caps	F.1 Wood Soffit
CONCRETE.01	CONCRETE.02	WOOD.01

Exterior Finish Notes:
 Paint: Sherwin Williams Paint
 Stucco: Synthetic Integral Color, Sand Float Finish
 Masonry: Roman Brick w/ cast concrete cap, Authentic Sedona Native Mix of River Rock & Red Cliff Stone
 Fascia: Bronze Aluminum
 Overhang & Canopy: Wood T&G Soffit w/ Steel Tube beams & columns.
 Window / Door Frame: Bronze Aluminum
 Low Slope Roof: Seamless w/ Acrylic Finish SW7047 - LRV.13
 Pitch Roof: Raised Seamed Metal w/ Matching Fascia Trim (Treehouse) Gray terracotta roof tile 'Ludowici', Ludoslate (Multi-Family)
 Handrails / Guardrails: Painted metal railings (steel pipe frame w/ perforated metal panel)
 Concrete Paving: Integral Color Exposed Sand Finish w/ Scoring



A.1 SW-6174 STUCCO.01- LRV.5	A.2 SW-6160 STUCCO.02- LRV.9	A.3 SW-7735 STUCCO.03- LRV.10
A.4 SW-6069 STUCCO.04- LRV.5	A.5 SW-6090 STUCCO.05- LRV.7	A.6 SW-6068 STUCCO.06- LRV.10
A.7 SW-7020 STUCCO.07- LRV.7	A.8 SW-7047 STUCCO.08- LRV.13	A.9 SW-7019 STUCCO.09- LRV.17
B.1 Roman Brick wall 1 ROMAN BRICK.01	B.2 Stone wall 1 STONE.01	B.3 Stone wall 2 STONE.02
C.1 Metal Material -1 METAL.01	C.2 Metal Material -2 METAL.02	C.3 Metal Material -3 METAL.03
D.1 Roof - Gray Metal ROOF.01	D.2 Roof - Slate composite ROOF.02	D.3 Roof - Flat ROOF.03
E.1 Concrete Paving CONCRETE.01	E.2 Concrete Wall Caps CONCRETE.02	F.1 Wood Soffit WOOD.01

Exterior Finish Notes:
 Paint: Sherwin Williams Paint
 Stucco: Synthetic Integral Color, Sand Float Finish
 Masonry: Roman Brick w/ cast concrete cap, Authentic Sedona Native Mix of River Rock & Red Cliff Stone
 Fascia: Bronze Aluminum
 Overhang & Canopy: Wood T&G Soffit w/ Steel Tube beams & columns.
 Window / Door Frame: Bronze Aluminum
 Low Slope Roof: Seamless w/ Acrylic Finish SW7047 - LRV-13
 Pitch Roof: Raised Seamed Metal w/ Matching Fascia Trim (Treehouse) Gray terracotta roof tile 'Ludowici', Ludoslate (Multi-Family)
 Handrails / Guardrails: Painted metal railings (steel pipe frame w/ perforated metal panel)
 Concrete Paving: Integral Color Exposed Sand Finish w/ Scoring



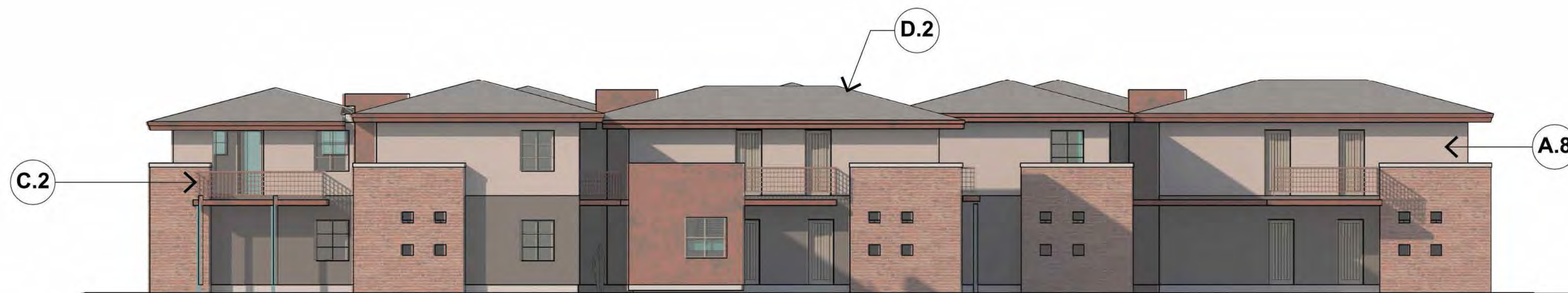
Color - West



Color - East



Color - North



Color - South

A.1 SW-6174 STUCCO.01- LRV.5	A.2 SW-2846 STUCCO.02- LRV.9	A.3 SW-7735 STUCCO.03- LRV.10
A.4 SW-6069 STUCCO.04- LRV.5	A.5 SW-6090 STUCCO.05- LRV.7	A.6 SW-6068 STUCCO.06- LRV.10
A.7 SW-7020 STUCCO.07- LRV.7	A.8 SW-7047 STUCCO.08- LRV.13	A.9 SW-7019 STUCCO.09- LRV.17
B.1 Roman Brick wall 1 ROMAN BRICK.01	B.2 Stone wall 1 STONE.01	B.3 Stone wall 2 STONE.02
C.1 Metal Material -1 METAL.01	C.2 Metal Material -2 METAL.02	C.3 Metal Material -3 METAL.03
D.1 Roof - Gray Metal ROOF.01	D.2 Roof - Slate composite ROOF.02	D.3 Roof - Flat ROOF.03
E.1 Concrete Paving CONCRETE.01	E.2 Concrete Wall Caps CONCRETE.02	F.1 Wood Soffit WOOD.01

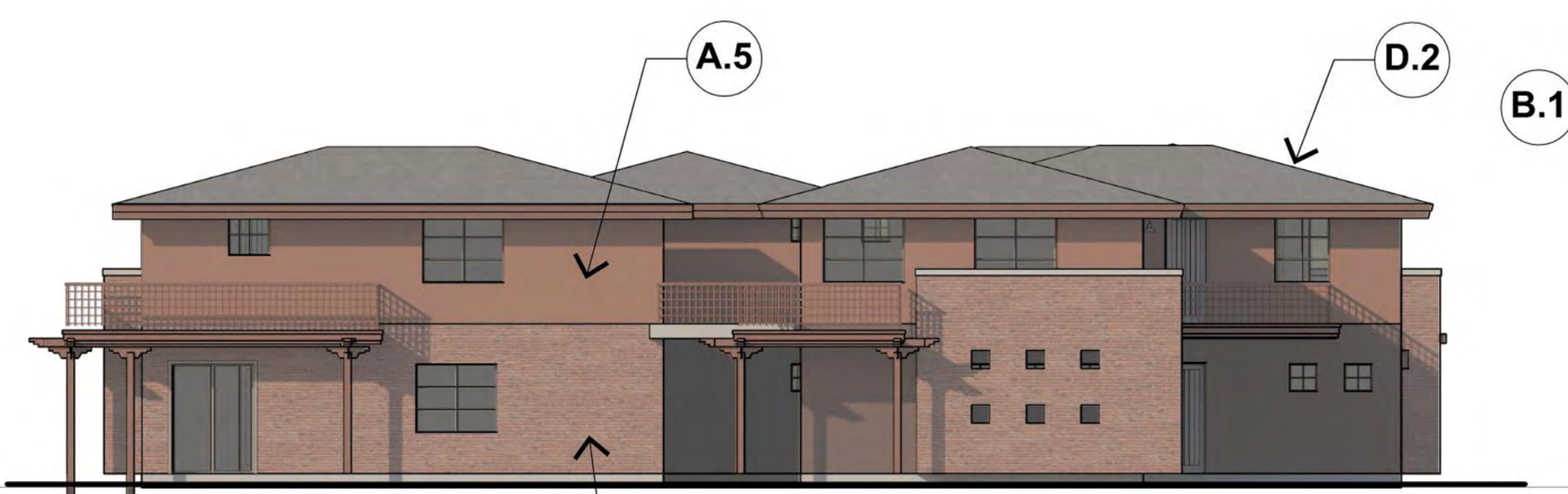
Exterior Finish Notes:
Paint: Sherwin Williams Paint
Stucco: Synthetic Integral Color, Sand Float Finish
Masonry: Roman Brick w/ cast concrete cap, Authentic Sedona Native Mix of River Rock & Red Cliff Stone
Fascia: Bronze Aluminum
Overhang & Canopy: Wood T&G Soffit w/ Steel Tube beams & columns.
Window / Door Frame: Bronze Aluminum
Low Slope Roof: Seamless w/ Acrylic Finish SW7047 - LRV.13
Pitch Roof: Raised Seamed Metal w/ Matching Fascia Trim (Treehouse) Gray terracotta roof tile 'Ludowici', Ludoslate (Multi-Family)
Handrails / Guardrails: Painted metal railings (steel pipe frame w/ perforated metal panel)
Concrete Paving: Integral Color Exposed Sand Finish w/ Scoring



Color - North



Color - South



Color - West



Color - East

A.1 SW-6174 STUCCO.01- LRV.5	A.2 SW-2846 STUCCO.02- LRV.9	A.3 SW-7735 STUCCO.03- LRV.10
A.4 SW-6069 STUCCO.04- LRV.5	A.5 SW-6090 STUCCO.05- LRV.7	A.6 SW-6068 STUCCO.06- LRV.10
A.7 SW-7020 STUCCO.07- LRV.7	A.8 SW-7047 STUCCO.08- LRV.13	A.9 SW-7019 STUCCO.09- LRV.17
B.1 Roman Brick wall 1 ROMAN BRICK.01	B.2 Stone wall 1 STONE.01	B.3 Stone wall 2 STONE.02
C.1 Metal Material -1 METAL.01	C.2 Metal Material -2 METAL.02	C.3 Metal Material -3 METAL.03
D.1 Roof - Gray Metal ROOF.01	D.2 Roof - Slate composite ROOF.02	D.3 Roof - Flat ROOF.03
E.1 Concrete Paving CONCRETE.01	E.2 Concrete Wall Caps CONCRETE.02	F.1 Wood Soffit WOOD.01

Exterior Finish Notes:
Paint: Sherwin Williams Paint
Stucco: Synthetic Integral Color, Sand Float Finish
Masonry: Roman Brick w/ cast concrete cap, Authentic Sedona Native Mix of River Rock & Red Cliff Stone
Fascia: Bronze Aluminum
Overhang & Canopy: Wood T&G Soffit w/ Steel Tube beams & columns.
Window / Door Frame: Bronze Aluminum
Low Slope Roof: Seamless w/ Acrylic Finish SW7047 - LRV-13
Pitch Roof: Raised Seamed Metal w/ Matching Fascia Trim (Treehouse) Gray terracotta roof tile 'Ludowici', Ludoslate (Multi-Family)
Handrails / Guardrails: Painted metal railings (steel pipe frame w/ perforated metal panel)
Concrete Paving: Integral Color Exposed Sand Finish w/ Scoring

MONUMENT SIGN

- SADDLEROCK / HIGHWAY 89-A INTERSECTION
- NORTH HIGHWAY 89-A ENTRY

BUILDING SIGN

BUILDING MOUNTED / BUSINESS TENANT SIGNAGE

(CUTOUT METAL LETTERS, INDIRECTLY LIT WITH CONCEALED INTEGRAL LIGHT)

STREET ADDRESS SIGN*

BUILDING MOUNTED
(ADDRESSING AS REQUIRED BY FIRE CODE)

*EXEMPT FROM PERMITTING PROCESS

INFORMATION SIGN*

FREESTANDING
(Low-level & integrated into paving or landscaping and of color/material to harmonize with overall design. Will not be visible from areas off-site. General circulation lighting is expected to illuminate this type of signage.)

Compliant with Sedona city code Article 9.7. Includes permitted uses on the property, including, but not limited to signs indicating hours of operation, and such signs as "No Smoking," "Open," "Closed," "Restrooms," "No Solicitors," "Deliveries In Rear," current credit card signs, trade association emblems, and the like.)

*EXEMPT FROM PERMITTING PROCESS

ON-SITE DIRECTORY SIGN

FREESTANDING
(SIGNAGE PERMIT REQUIRED BY CITY CODE)

ACCESSIBILITY SIGN*

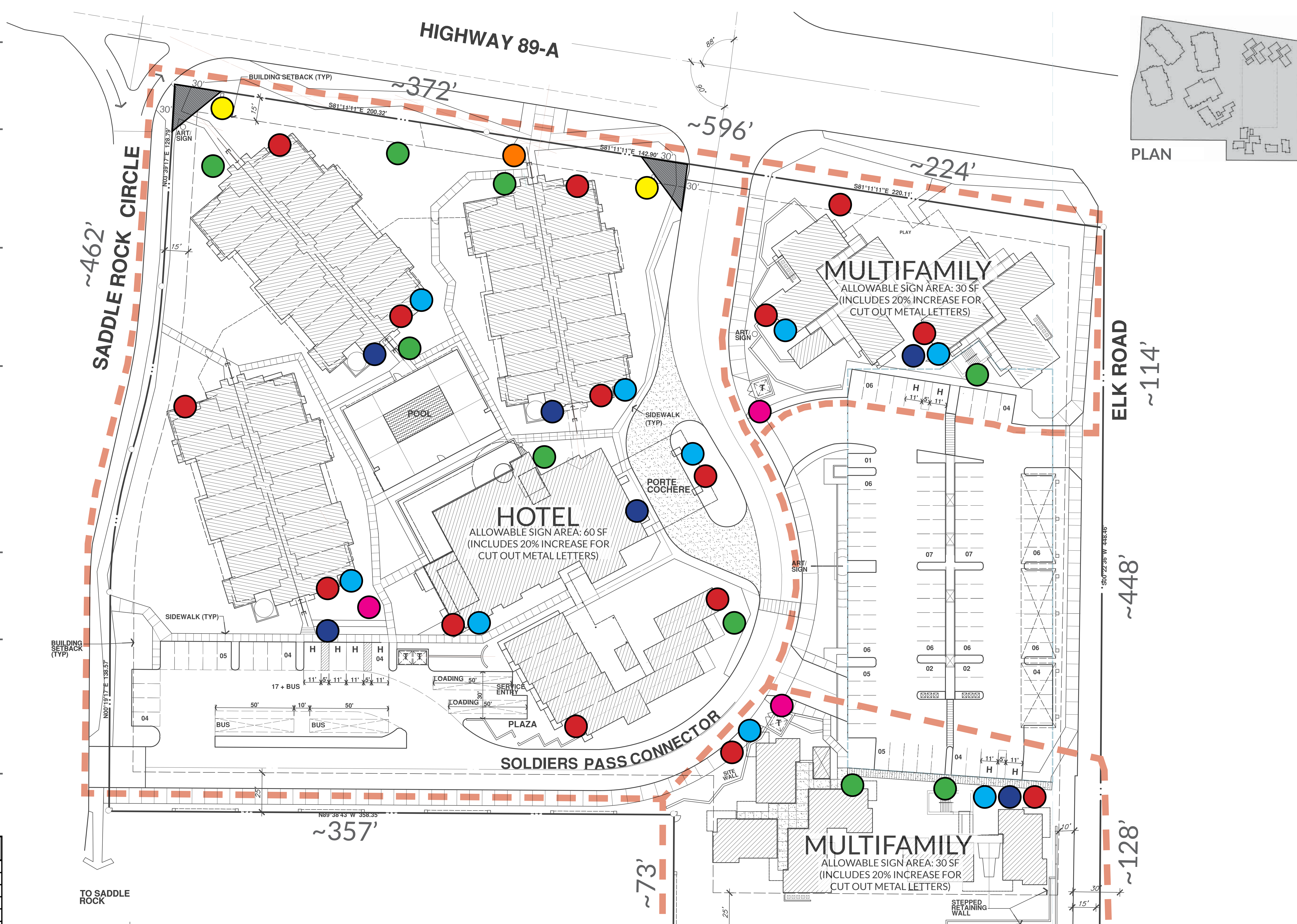
VARIES
(ADA PARKING, BUILDING ENTRY, RESTROOMS, AND THE LIKE, AS REQUIRED BY ADA & CITY CODE)

*EXEMPT FROM PERMITTING PROCESS

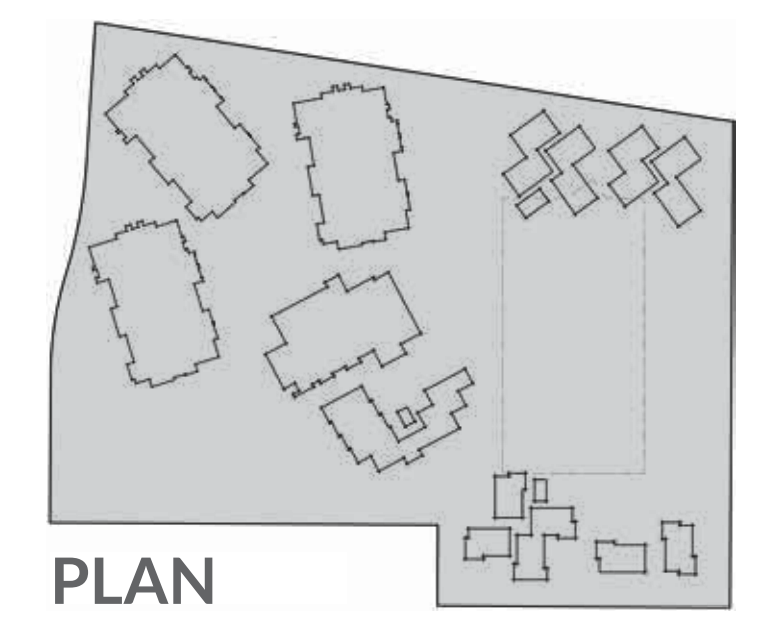
WAYFINDING SIGN

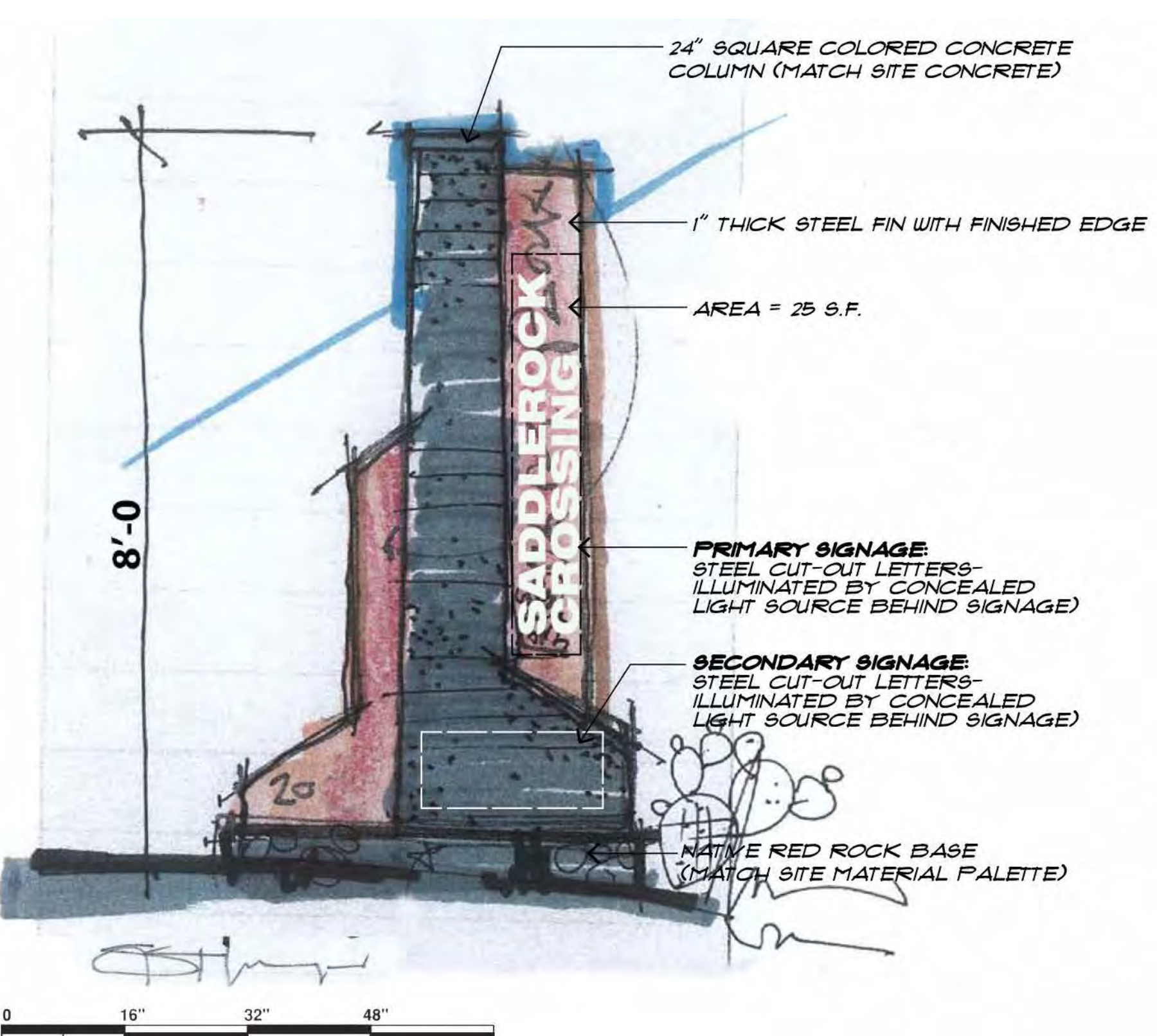
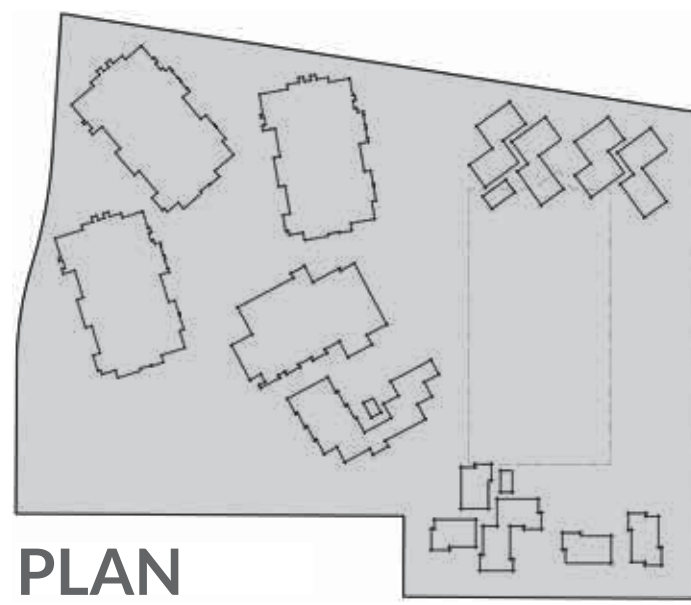
FREESTANDING
(SIGNAGE PERMIT REQUIRED BY CITY CODE)

SIGNAGE SUMMARY				
QTY	TYPE	LOCATION	AREA	HT
2	MONUMENT SIGNS	Saddlerock/ 89A Intersection	25	8'
		North Entry (89A)	25	8'
9	BUILDING SIGNAGE	Hotel Lobby	18	16'
		Treehouse Suites	8	16'
		Hotel Guest Rooms - East Wing	8	25'
		Hotel Guest Rooms - West Wing	8	25'
		Hotel Guest Rooms - North Wing	8	25'
		Multi-Family - South	30	15'
		Multi-Family - North	30	15'
15	STREET ADDRESS SIGNS	All buildings, per fire code.		
8	INFORMATION SIGNS	As indicated on plan.	16	3'
3	ON-SITE DIRECTORY SIGNS	Hotel & Multi-Family Properties	6	6'
As req'd per ADA	ACCESSIBILITY SIGNS	Throughout site as req'd per ADA		

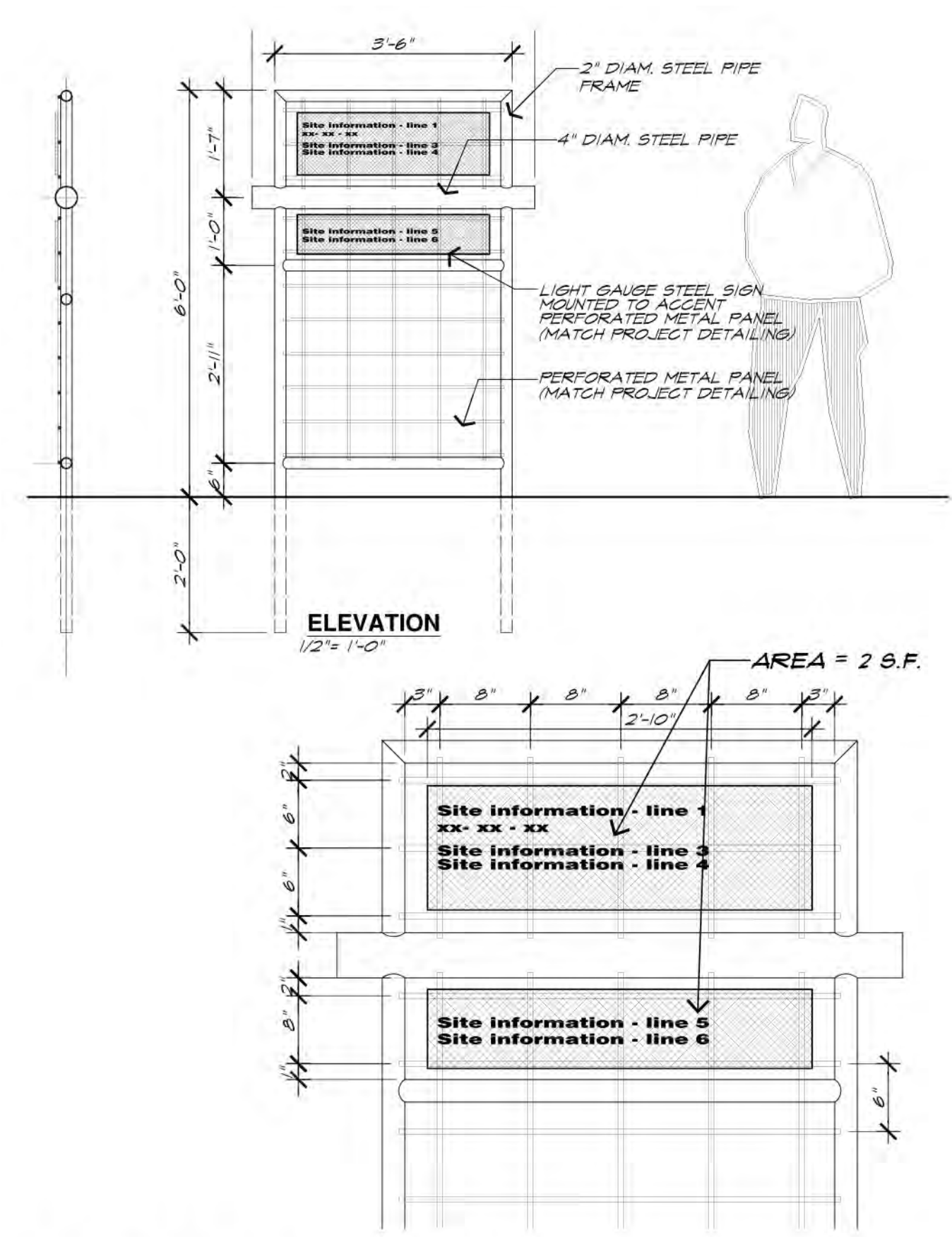


MASTER SIGNAGE PLAN
1"=30'-0"
0 30 60 90

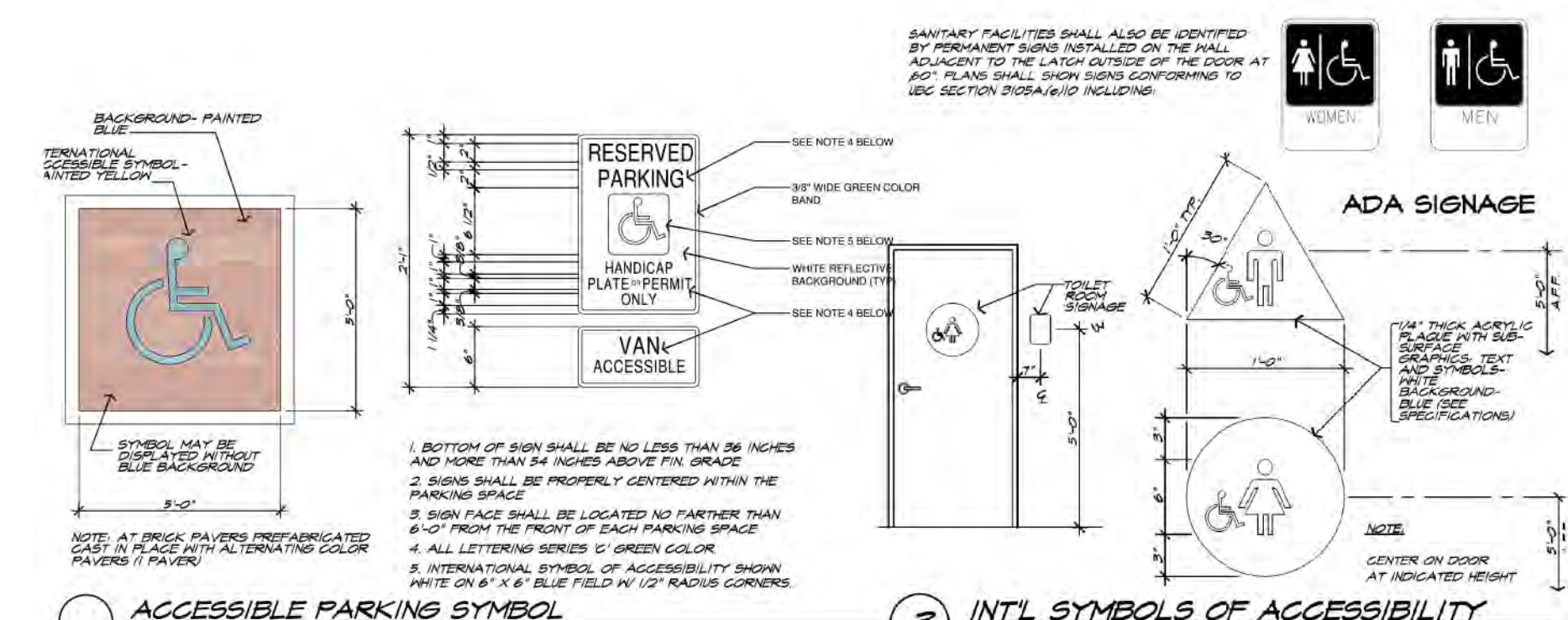




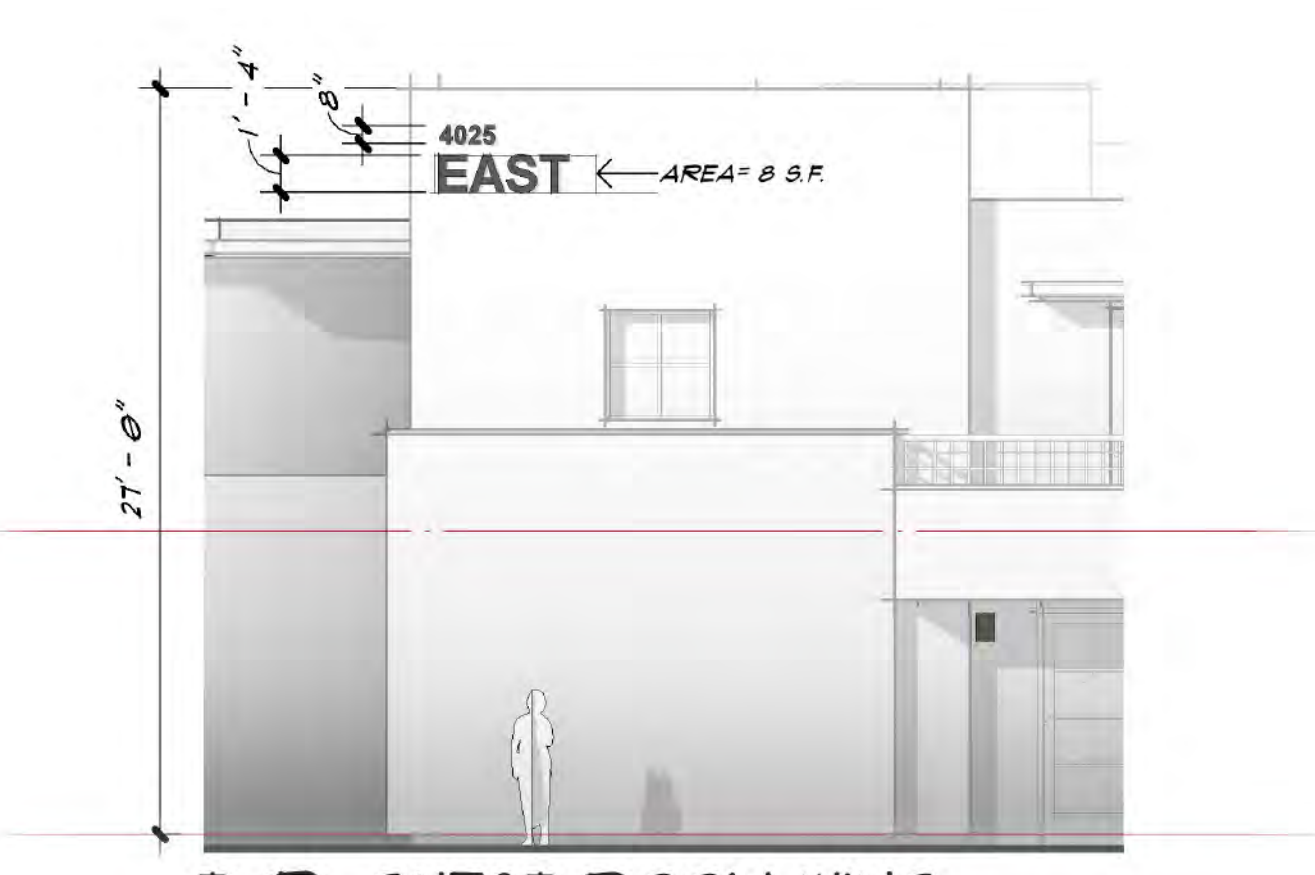
MONUMENT SIGNAGE
LOCATED OUTSIDE 30° VISIBILITY TRIANGLE



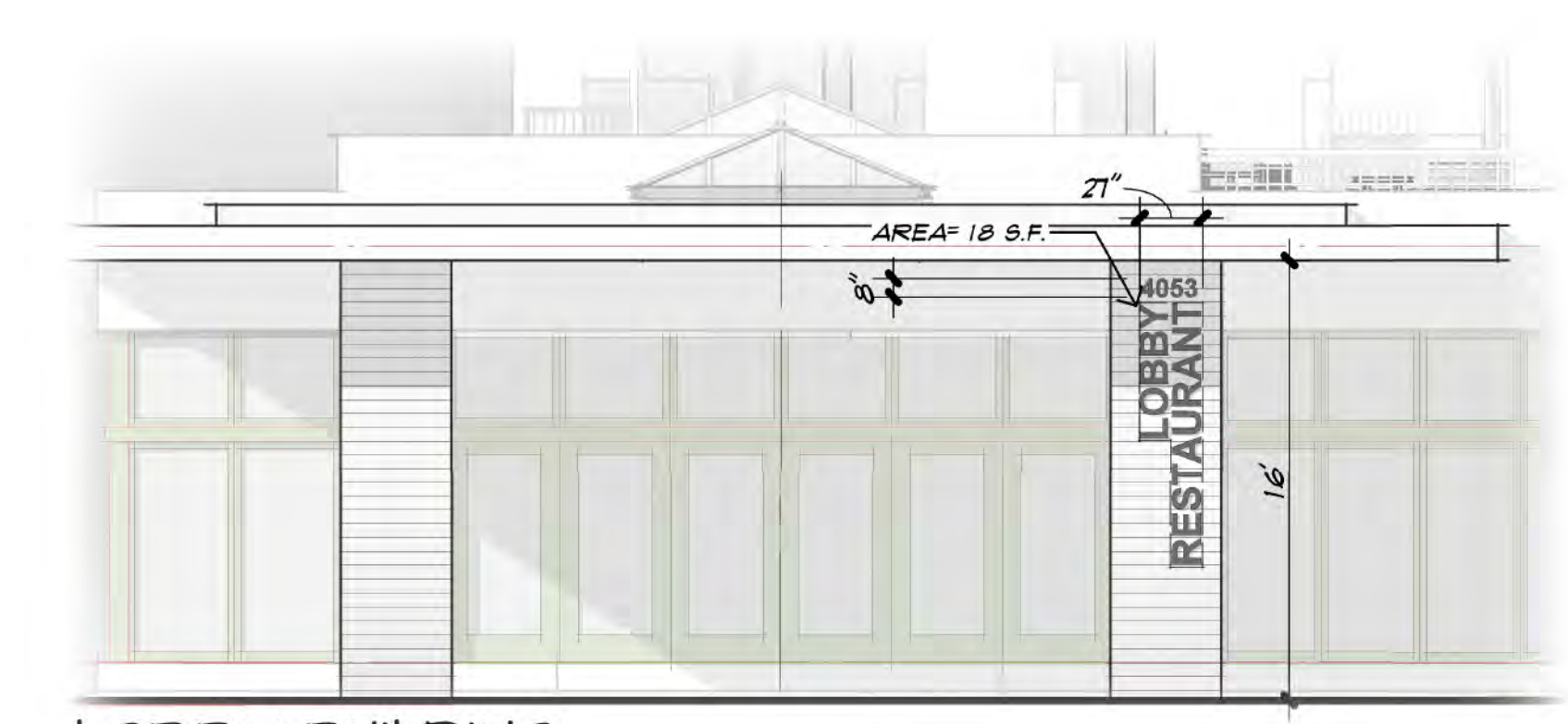
DIRECTORY SIGNAGE
FONT AND FINISH TO COMPLEMENT OTHER SITE SIGNAGE



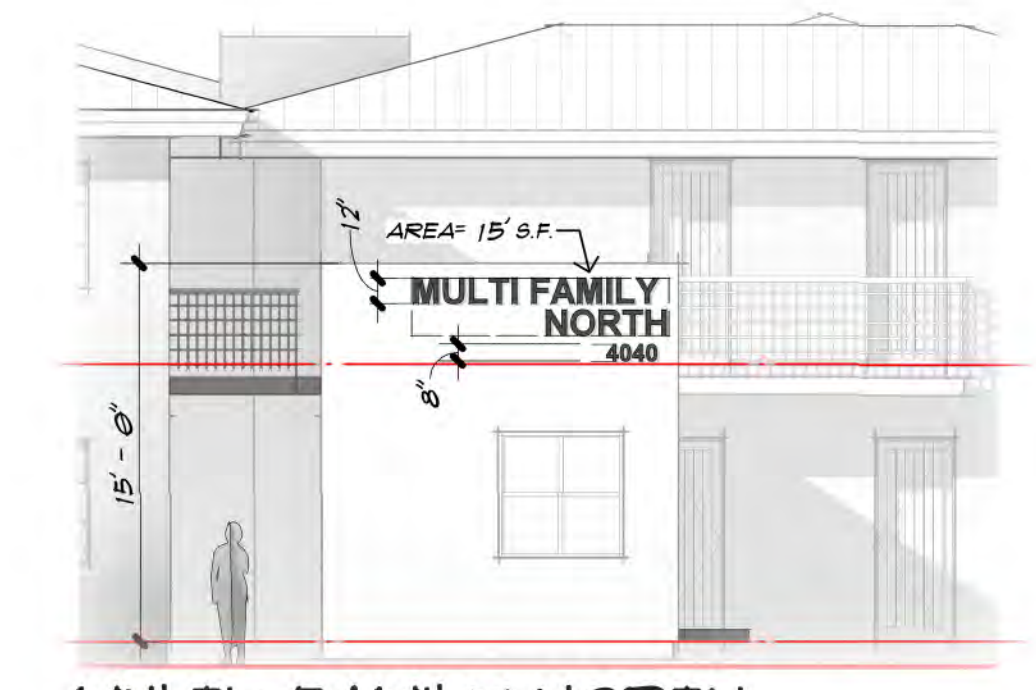
ACCESSIBILITY SIGNAGE



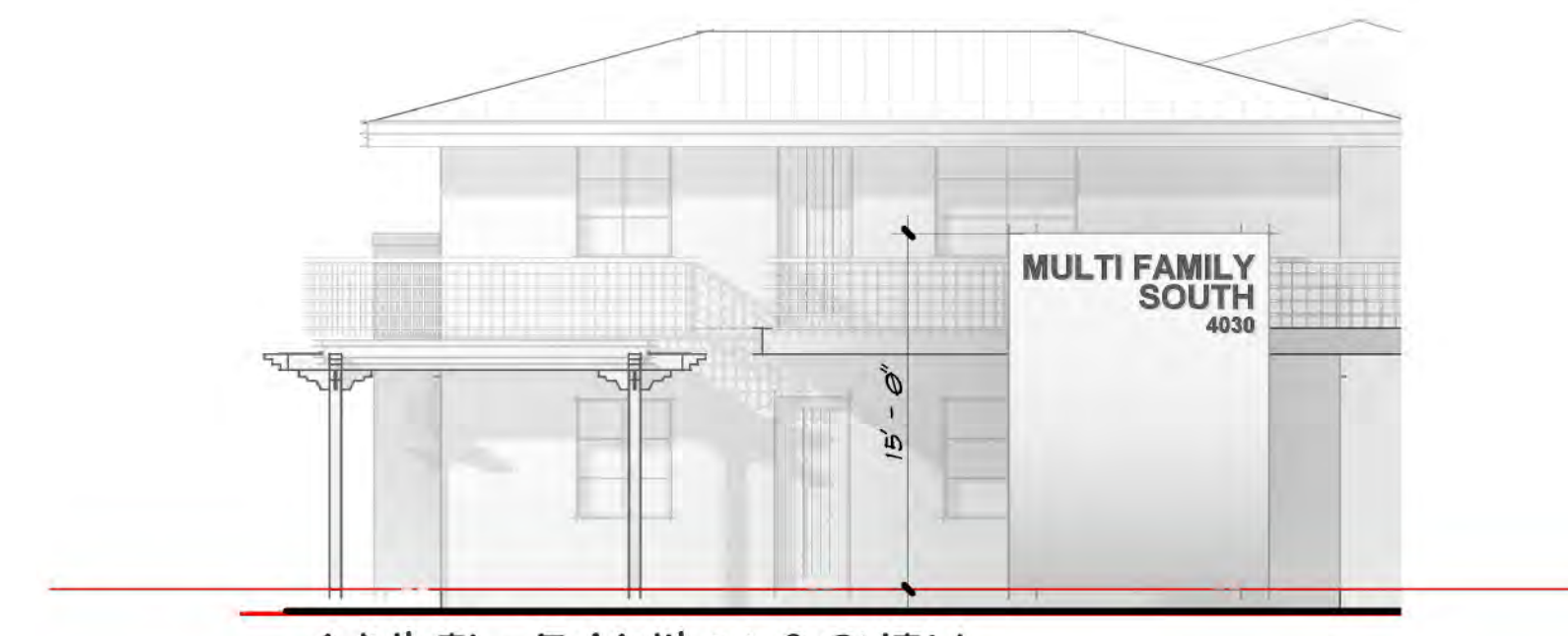
TYP. GUEST ROOM WING
FONT AND FINISH TO COMPLEMENT OTHER SITE SIGNAGE



LOBBY BUILDING
FONT AND FINISH TO COMPLEMENT OTHER SITE SIGNAGE



MULTI-FAMILY NORTH
FONT AND FINISH TO COMPLEMENT OTHER SITE SIGNAGE



MULTI-FAMILY SOUTH
FONT AND FINISH TO COMPLEMENT OTHER SITE SIGNAGE