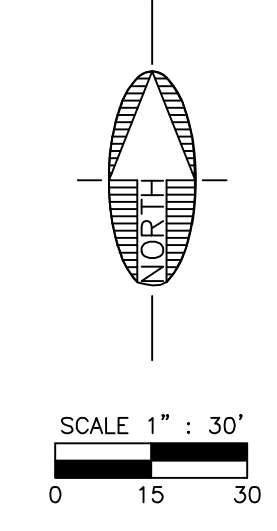
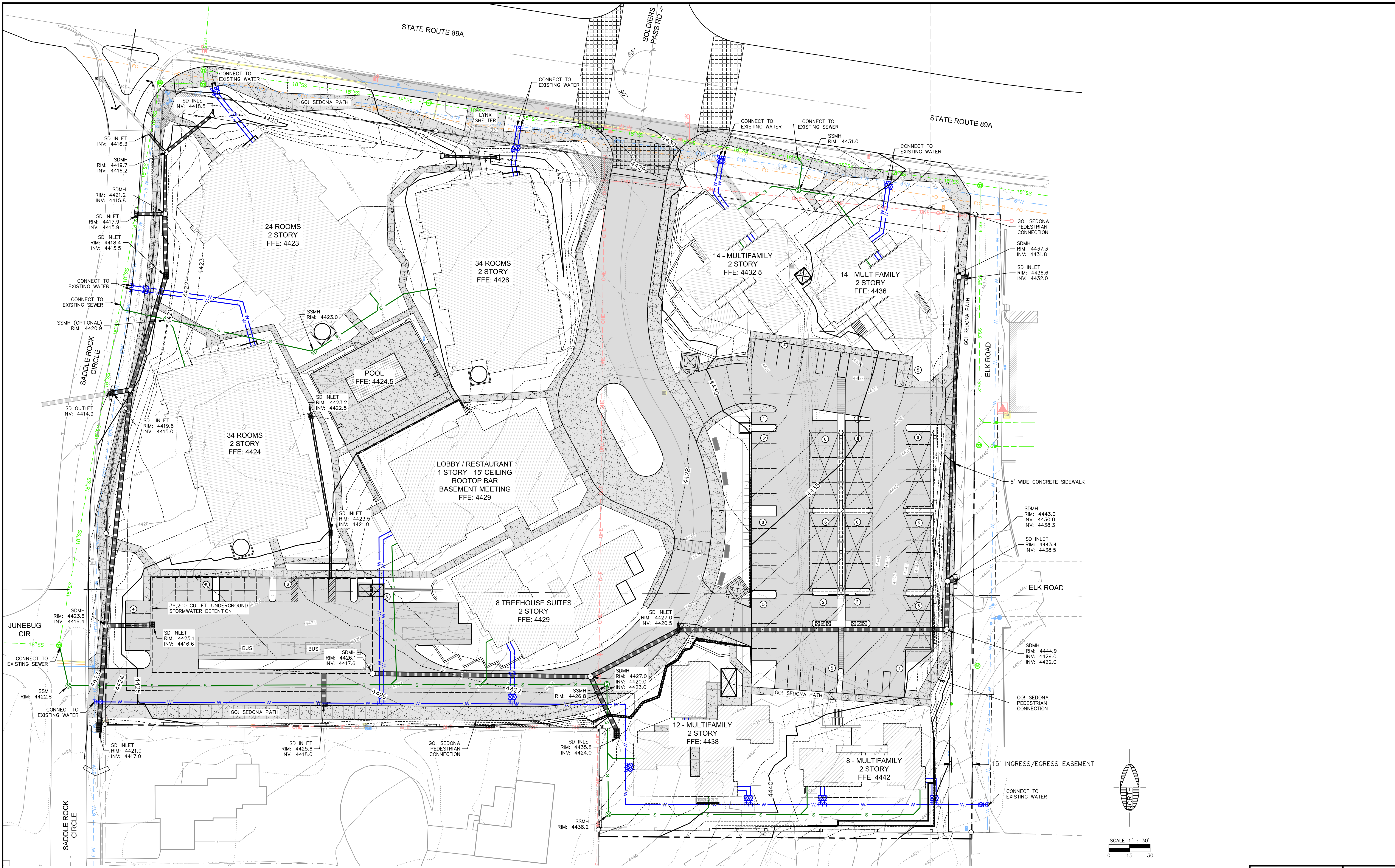


PLOTTED: Jul 31, 2024-11:39am

FILE: P:\2016\1603A\DRAWINGS\1603A\PLANS\GRADING DRAINAGE & UTILITY CONCEPT - 21615.DWG MAJING



Contact Arizona 811 at least two full working days before you begin excavation



Call 811 or click Arizona811.com

REVISIONS			
NO.	DESCRIPTION	DATE	BY

**SWI**  
Shepard Wesnitzer, Inc.

75 Kall of Place  
Sedona, AZ 86336  
928.282.1061  
928.282.2058 fax  
www.swiaz.com

JOB NO: 16034  
DATE: JUL 24  
SCALE: 1"=30'  
DRAWN: MWJ/ADA  
DESIGN: JTL/AHB  
CHECKED: AHB

THE VILLAGE AT SADDLEROCK CROSSING  
SEDONA ARIZONA

**GRADING, DRAINAGE, & UTILITY CONCEPT**

**PRELIMINARY**  
NOT FOR CONSTRUCTION,  
BIDDING OR RECORDING

DRAWING NO. **GC1**

SHT NO. **1** OF **1**

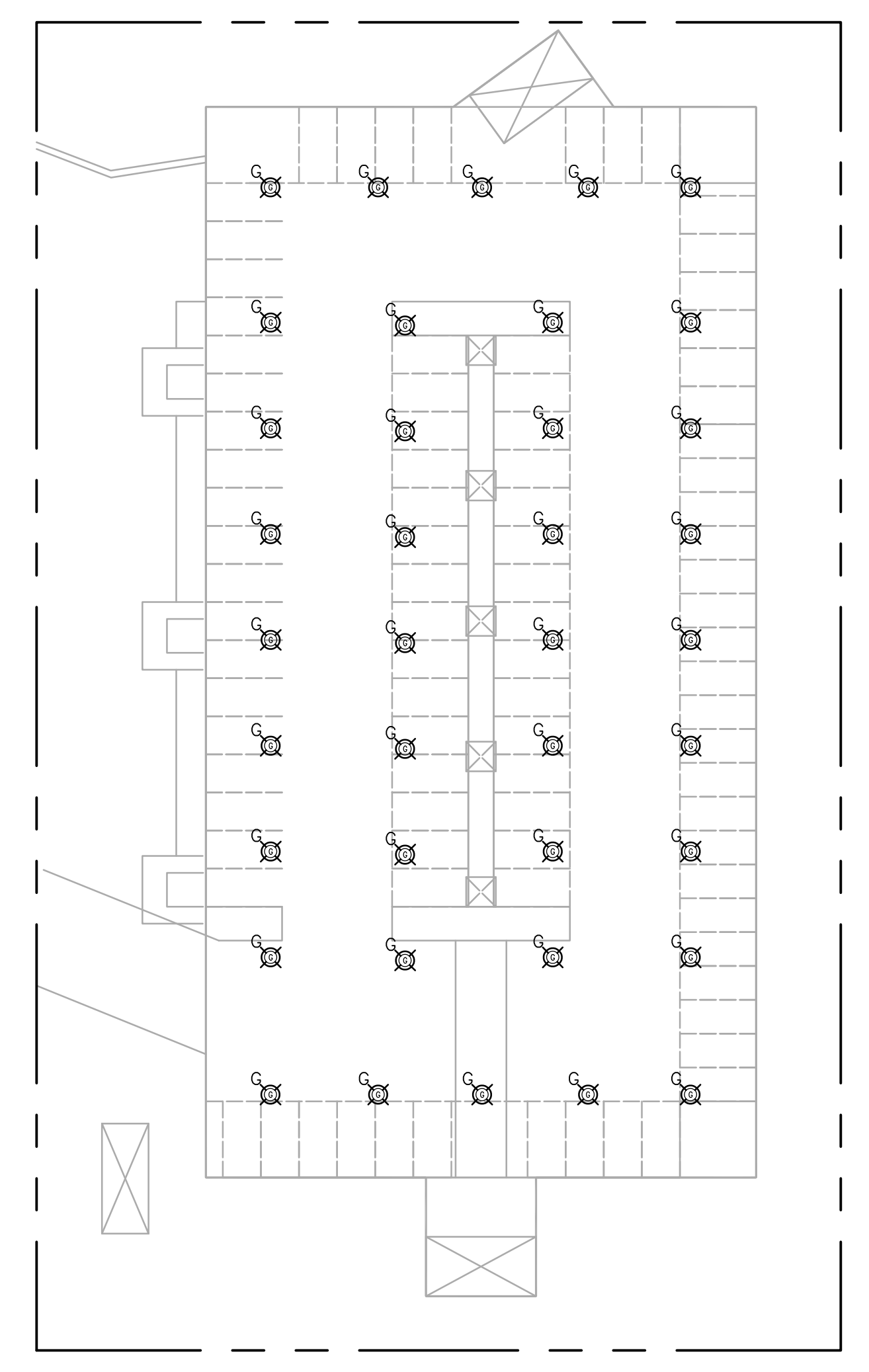
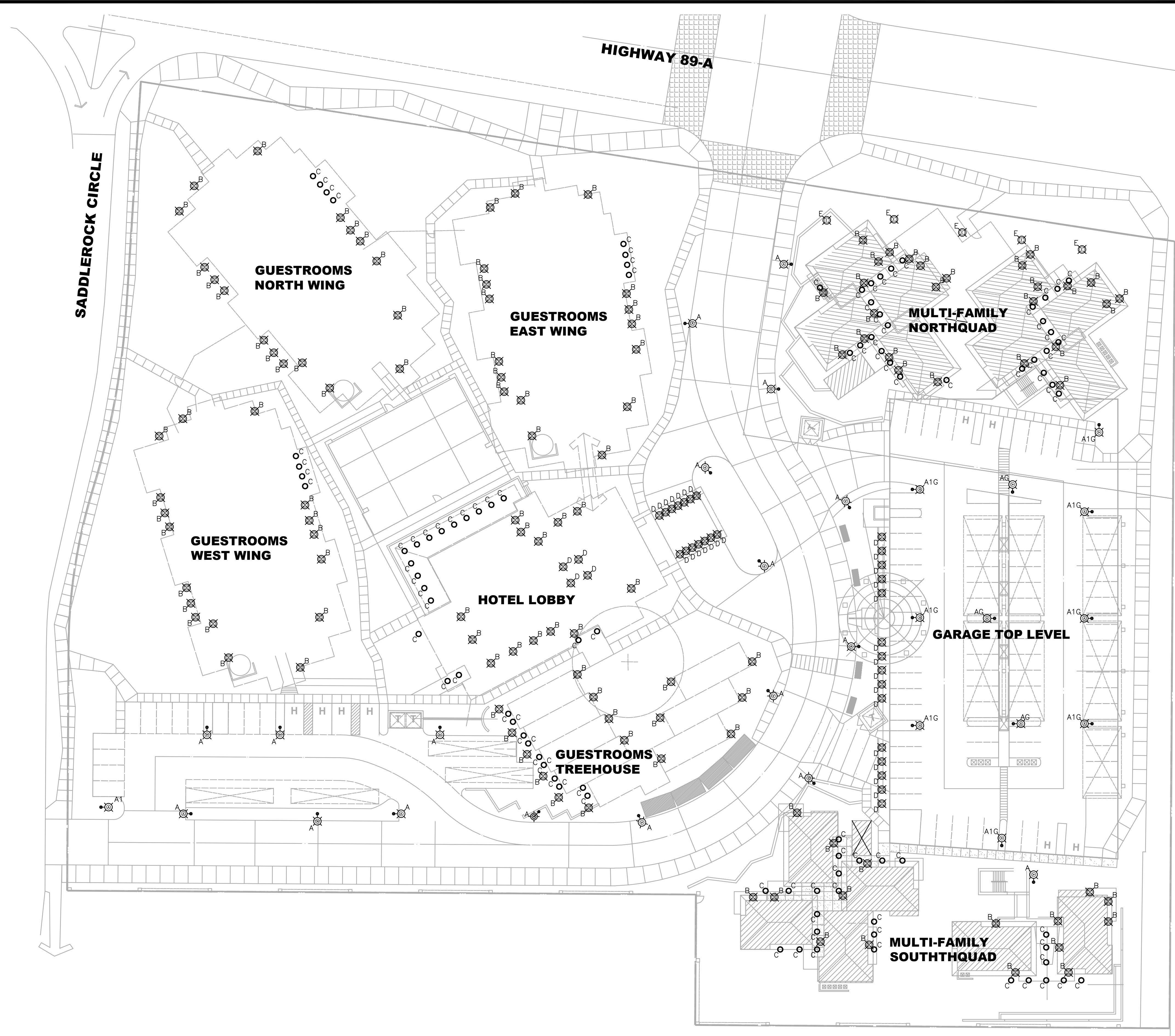


**GENERAL NOTES**

A. CONTRACTOR SHALL ARRANGE AND ATTEND A NIGHTTIME INSPECTION OF THE ENERGIZED LIGHTING BY OWNER'S STAFF AND SHALL CORRECT ALL NON-CONFORMING ITEMS IDENTIFIED DURING THE INSPECTION PRIOR TO THE CITY ISSUING THE FINAL CERTIFICATE OF OCCUPANCY/COMPLETION.

**LEGEND**

- TYPE 'A'
- TYPE 'B'
- TYPE 'C'
- TYPE 'D'
- TYPE 'G'
- TYPE 'E'



**2 LIGHTING PLAN GARAGE LOWER LEVEL**  
SCALE: 1"=30'-0"

**1 LIGHTING SITE PLAN**  
SCALE: 1"=30'-0"

**VOLTA**  
1730 E. Northern Avenue, Ste. 120, Phoenix, AZ 85020  
Tel. (480) 659-0511, [VoltaUS.com](http://VoltaUS.com)

THIS DRAWING IS THE PROPERTY OF VOLTA LIGHTING INC. AND IS TO BE USED ONLY FOR THE PROJECT AND SITE SPECIFICALLY IDENTIFIED HEREON. ANY REUSE OR REPRODUCTION OF THIS DRAWING WITHOUT THE WRITTEN PERMISSION OF VOLTA LIGHTING INC. IS STRICTLY PROHIBITED. VOLTA LIGHTING INC. SHALL NOT BE RESPONSIBLE FOR ANY ERRORS OR OMISSIONS IN THIS DRAWING. THE CONTRACTOR SHALL BE RESPONSIBLE FOR VERIFYING ALL DIMENSIONS AND CONDITIONS OF THE SITE PRIOR TO CONSTRUCTION. VOLTA LIGHTING INC. IS NOT A LICENSED ELECTRICAL ENGINEER IN THE STATE OF ARIZONA. ALL ELECTRICAL WORK SHALL BE PERFORMED IN ACCORDANCE WITH THE NATIONAL ELECTRICAL CODE (NEC) AND ALL APPLICABLE LOCAL CODES AND REGULATIONS.

PRELIMINARY  
NOT FOR CONSTRUCTION  
OR RECORDING

THE VILLAGE  
AT SADDLEROCK CROSSING  
SOLDIERS PASS ROAD & HIGHWAY 89A  
SEDONA, ARIZONA

REVISIONS	DATE	CITY COMMENTS
1	09/29/21	

PROJECT # 811203.00 SCALE: AS NOTED  
CHECKED BY: WB DRAWN BY: ETS  
DATE: 04/20/21

LIGHTING  
SITE PLAN

**E1.0**

PHOTOMETRIC NOTES

A. THE PHOTOMETRIC DATA ON THIS SHEET HAS BEEN REVIEWED BY THE ENGINEER FOR COMPLIANCE WITH APPLICABLE LIGHTING CODES. THE CALCULATIONS ARE PERFORMED BY LIGHTING SUPPLIER AND THE ENGINEER'S REVIEW IS NOT A GUARANTEE OF PERFORMANCE. SUBSTITUTIONS TO ANY FIXTURE WILL REQUIRE UPDATED PHOTOMETRICS WHICH WILL BE THE RESPONSIBILITY OF THE CONTRACTOR. THE FIXTURE SCHEDULE SHOWN ON THIS SHEET IS FOR CALCULATION PURPOSES ONLY. DO NOT USE AS A BILL-OF-MATERIAL. REFER TO THE PROJECT FIXTURE SCHEDULE.

**VOLTA**  
 1730 E. Northern Avenue, Ste. 120, Phoenix, AZ 85020  
 Tel. (480) 659-0511, VoltaUS.com

THIS DRAWING IS THE PROPERTY OF VOLTA LIGHTING. IT IS TO BE USED ONLY FOR THE PROJECT AND SITE SPECIFICALLY IDENTIFIED HEREON. IT IS NOT TO BE REPRODUCED, COPIED, OR DISCLOSED IN ANY MANNER WITHOUT THE WRITTEN CONSENT OF VOLTA LIGHTING. VOLTA LIGHTING ASSUMES NO LIABILITY FOR ANY ERRORS OR OMISSIONS IN THIS DRAWING. THE USER OF THIS DRAWING SHALL BE RESPONSIBLE FOR OBTAINING ALL NECESSARY PERMITS AND APPROVALS FROM THE APPROPRIATE AGENCIES. VOLTA LIGHTING SHALL NOT BE RESPONSIBLE FOR ANY DAMAGES, INCLUDING A THIRD PARTY, ARISING IN CONNECTION WITH THE USE OF THIS DRAWING. VOLTA LIGHTING SHALL NOT BE RESPONSIBLE FOR ANY DAMAGES, INCLUDING A THIRD PARTY, ARISING IN CONNECTION WITH THE USE OF THIS DRAWING.

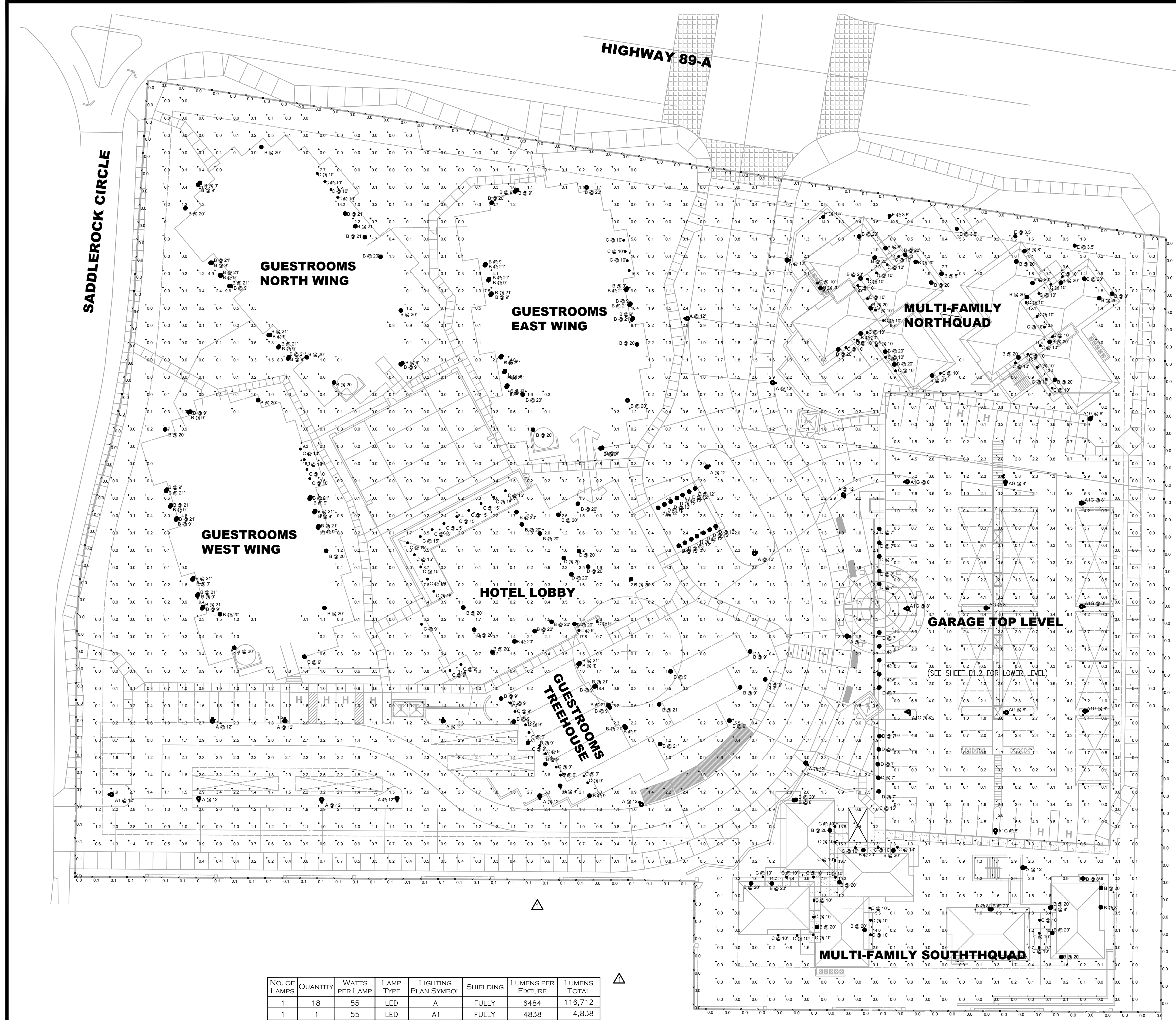
PRELIMINARY  
 NOT FOR CONSTRUCTION  
 OR RECORDING

THE VILLAGE  
 AT SADDLEROCK CROSSING  
 SOLDIERS PASS ROAD & HIGHWAY 89A  
 SEDONA, ARIZONA

REVISIONS	DATE	DESCRIPTION
1	01/02/24	CITY COMMENTS
2	09/30/21	CITY COMMENTS
3	04/20/21	ISSUED FOR PERMIT

PROJECT # 811203.00  
 SCALE: AS NOTED  
 CHECKED BY: WB  
 DRAWN BY: ETS  
 DATE: 04/20/21

PHOTOMETRIC  
 SITE PLAN  
**E1.1**



Symbol	Label	QTY	Manufacturer	Catalog Number
○	A	18	VISIONAIRE	ODN-1-L-T5WR-32LC-5-27K-UNV-VA110-S1-3 1/2--(FINISH)-C1/H6 / RSA 9.5' POLE W/ 3-1/2" O.D. X 4" TALL TENON TOP AND 2.5 BASE
○	A1	1	VISIONAIRE	ODN-1-L-T1-32LC-5-27K-UNV-VA110-S1-3 1/2--(FINISH)-C1/H6-CLS / RSA 5.5' POLE W/ 3-1/2" O.D. X 4" TALL TENON TOP AND 2.5 BASE
○	A1G	8	VISIONAIRE	ODN-1-L-T1-32LC-5-27K-UNV-VA110-S1-3 1/2--(FINISH)-C1/H6-CLS / RSA 5.5' POLE W/ 3-1/2" O.D. X 4" TALL TENON TOP AND 2.5 BASE
○	AG	3	VISIONAIRE	ODN-1-L-T5WR-32LC-5-27K-UNV-VA110-S1-3 1/2--(FINISH)-C1/H6 / RSA 5.5' POLE W/ 3-1/2" O.D. X 4" TALL TENON TOP AND 2.5 BASE
○	B	160	ANP	WDU514-(FINISH)-M012LD-D-N-27K-E33UE14
○	C	91	GOTHAM	EV04 27/10 AR MD LSS
○	D	33	ANP	WDU516-(FINISH)-M012LD-D-N-27K-E33UE18
○	E	5	ANP	BL7803 FR M016LD W 27K (FINISH)
○	H	50	WAC Lighting	6061-2700

Label	Description	Lamp	Filename	Lumens per Lamp	LLF	Wattage
A	20" DIA SMALL LED BELL HOUSING WITH T5 WIDE ROUND OPTIC, MOUNTED @12' AFG	2700K LED / 6484 LUMENS	ODN-1-L_T5WR_32LC_5_2700K.ies	6484	0.91	55
A1	20" DIA SMALL LED BELL HOUSING WITH TYPE 1 OPTIC & HOUSE SIDE SHIELD, MOUNTED @12' AFG	2700K LED / 4838 LUMENS	ODN-1-L_T1_32LC_5_2700K_UNV_CLS.ies	4838	0.91	54.7
A1G	20" DIA SMALL LED BELL HOUSING WITH TYPE 1 OPTIC & HOUSE SIDE SHIELD MOUNTED @8' AFG	2700K LED / 4838 LUMENS	ODN-1-L_T1_32LC_5_2700K_UNV_CLS.ies	4838	0.91	54.7
AG	20" DIA SMALL LED BELL HOUSING WITH T5 WIDE ROUND OPTIC, MOUNTED @8' AFG	2700K LED / 6484 LUMENS	ODN-1-L_T5WR_32LC_5_2700K.ies	6484	0.91	55
B	14" VINTAGE LAMP SHADE WITH INTEGRATED 12W CREE LED MODULE RATED FOR 60,000 HOURS	2700K LED / 550 LUMENS	LSU12M012DDN27K.ies	550	0.91	11.73
C	EVO 4IN ROUND DOWNLIGHT, 80 CRI, 2700K, 1000LM, MED DIST, CLEAR SEMI-SPEC	2700K LED / 921 LUMENS	EV04_27_10_AR_MD_LSS.ies	921	0.91	8.8
D	16" VINTAGE LAMP SHADE 12W CREE LED Module - Dome Lens	2700K LED / 550 LUMENS	LSU12M012DDN27K.ies	550	0.91	11.73
E	BOLLARD	2700K LED / 2359 LUMENS		2359	0.5	16
H	LOCATIONS TBD	2700K LED / 275 LUMENS		275	1	6.5

NO. OF LAMPS	QUANTITY	WATTS PER LAMP	LAMP TYPE	LIGHTING PLAN SYMBOL	SHIELDING	LUMENS PER FIXTURE	LUMENS TOTAL
1	18	55	LED	A	FULLY	6484	116,712
1	1	55	LED	A1	FULLY	4838	4,838
1	8	55	LED	A1G	FULLY	4838	38,704
1	3	55	LED	AG	FULLY	6484	19,452
1	160	12	LED	B	FULLY	550	88,000
1	91	9	LED	C	FULLY	921	83,811
1	33	12	LED	D	FULLY	550	18,150
1	5	16	LED	E	FULLY	2359	11,795
1	50	7	LED	H	FULLY	275	13,750

6.36 ACRES  
 70,000 MAX LUMENS PER ACRE  
 445,200 TOTAL LUMENS ALLOWED

LUMEN TOTAL 395,212  
 TOTAL LUMENS ALLOWED 445,200

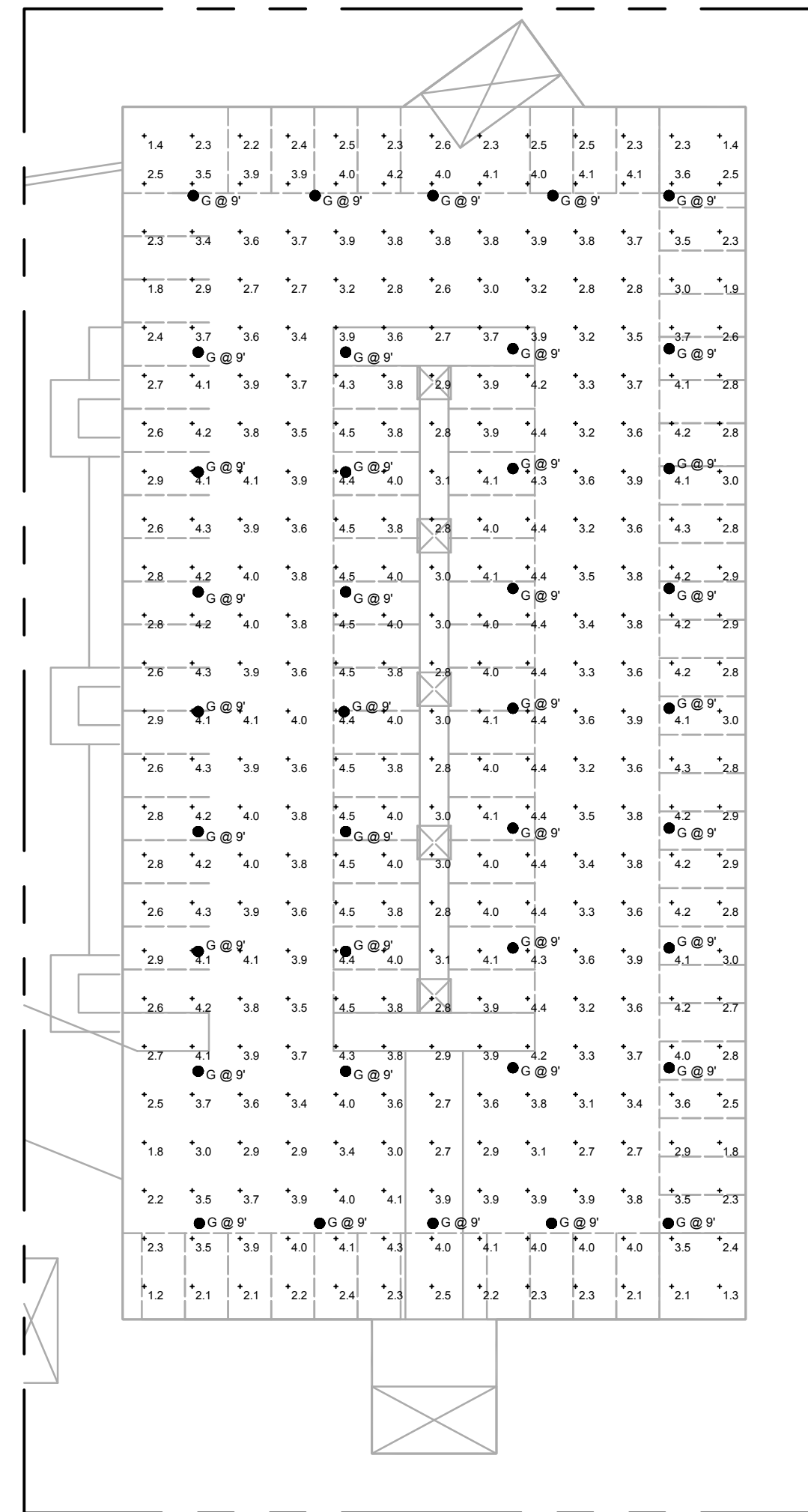
② LUMEN CALCS  
 NO SCALE

① PHOTOMETRIC SITE PLAN  
 SCALE: 1"=30'-0"



PHOTOMETRIC NOTES

A. THE PHOTOMETRIC DATA ON THIS SHEET HAS BEEN REVIEWED BY THE ENGINEER FOR COMPLIANCE WITH APPLICABLE LIGHTING CODES. THE CALCULATIONS ARE PERFORMED BY LIGHTING SUPPLIER AND THE ENGINEER'S REVIEW IS NOT A GUARANTEE OF PERFORMANCE. SUBSTITUTIONS TO ANY FIXTURE WILL REQUIRE UPDATED PHOTOMETRICS WHICH WILL BE THE RESPONSIBILITY OF THE CONTRACTOR. THE FIXTURE SCHEDULE SHOWN ON THIS SHEET IS FOR CALCULATION PURPOSES ONLY. DO NOT USE AS A BILL-OF-MATERIAL. REFER TO THE PROJECT FIXTURE SCHEDULE.



AREA SERVED:	GARAGE	BASIS:	IECC 2018																									
SQUARE-FOOTAGE:	32890 SF																											
ALLOWED WATTS /FT2:	0.15 W/FT																											
TOTAL ALLOWED WATTS:	4934 WATTS																											
PROPOSED (SEE BELOW)	1026 WATTS																											
PROJECT COMPLIANCE	3908 WATTS	79%																										
<table border="1"> <thead> <tr> <th>A</th> <th>B</th> <th>C</th> <th>D</th> <th>E</th> </tr> </thead> <tbody> <tr> <td>FIXTURE DESCRIPTION</td> <td>TAG</td> <td>LAMPS/ FIXT</td> <td>NUM FIXT</td> <td>WATT</td> </tr> <tr> <td>SEE FIXT SCHEDULE (TYP)</td> <td>G</td> <td>1</td> <td>38</td> <td>27</td> </tr> <tr> <td></td> <td></td> <td>0</td> <td>0</td> <td>0</td> </tr> <tr> <td colspan="4" style="text-align: right;">TOTAL</td> <td>1026</td> </tr> </tbody> </table>				A	B	C	D	E	FIXTURE DESCRIPTION	TAG	LAMPS/ FIXT	NUM FIXT	WATT	SEE FIXT SCHEDULE (TYP)	G	1	38	27			0	0	0	TOTAL				1026
A	B	C	D	E																								
FIXTURE DESCRIPTION	TAG	LAMPS/ FIXT	NUM FIXT	WATT																								
SEE FIXT SCHEDULE (TYP)	G	1	38	27																								
		0	0	0																								
TOTAL				1026																								

② INTERIOR ENERGY CALCULATIONS  
NO SCALE

① GARAGE LOWER LEVEL - PHOTOMETRIC PLAN  
SCALE: 1"=30'-0"

Symbol	Label	QTY	Manufacturer	Catalog Number	Description	Lamp	Filename	Lumens per Lamp	LLF	Wattage
○	G	38	LITHONIA	VCPG LED P1 30K 80CRI T5W MVOLT PM SPD10KV (FINISH)	VCPG LED WITH P1 - PERFORMANCE PACKAGE, 3000K, T5W OPTIC TYPE	2700K LED / 3592 LUMENS	VCPG_LED_P1_27K_T5W_MVOLT.ies	3592	0.91	26.67

Symbol	Description	Max/Min	Avg	Max	Min	Avg/Min
+	parking garage	3.8-1	3.5 fc	4.5 fc	1.2 fc	2.9-1
×	parking roof	N/A	1.5 fc	7.6 fc	0.0 fc	N/A
×	PL FC AFG	N/A	0.0 fc	0.1 fc	0.0 fc	N/A
+	SIT FC AFG	N/A	1.4 fc	25.8 fc	0.0 fc	N/A

**VOLTA**  
1730 E. Northern Avenue, Ste. 120, Phoenix, AZ 85020  
Tel. (480) 659-0511, VoltaUS.com

THIS DOCUMENT IS THE PROPERTY OF VOLTA LLC. IT IS TO BE USED FOR THE PROJECT AND NOT BE REPRODUCED OR DISCLOSED TO ANY OTHER PARTY WITHOUT THE WRITTEN PERMISSION OF VOLTA LLC. VOLTA LLC SHALL NOT BE LIABLE FOR ANY DAMAGES, INCLUDING CONsequential DAMAGES, ARISING OUT OF OR FROM THE USE OF THIS DOCUMENT. VOLTA LLC SHALL NOT BE LIABLE FOR ANY DAMAGES, INCLUDING CONsequential DAMAGES, ARISING OUT OF OR FROM THE USE OF THIS DOCUMENT.

PRELIMINARY  
NOT FOR CONSTRUCTION  
OR RECORDING

THE VILLAGE  
AT SADDLEROCK CROSSING  
SOLDIERS PASS ROAD & HIGHWAY 89A  
SEDONA, ARIZONA

REVISIONS	DATE	DESCRIPTION
	09/30/21	
	04/20/21	

CITY COMMENTS  
ISSUED FOR PERMIT

PROJECT # 811203.00 SCALE: AS NOTED

CHECKED BY: WB DRAWN BY: ETS

DATE: 04/20/21

GARAGE  
LOWER LEVEL  
PHOTOMETRIC  
PLAN  
**E 1.2**



**gotham** | E V O<sup>+</sup>  
Multiple Layers of Light

Luminaire Type: \_\_\_\_\_  
Catalog Number: \_\_\_\_\_

**General Illumination Round Downlight** **4"**

**Feature Set**

- Bounding Ray™ optical design
- Unified optics mechanically attach the light engine to the lower reflector for complete optical alignment.
- 45° cutoff to source and source image
- Fully serviceable and upgradeable lensed LED light engine
- 70% lumen maintenance at 60,000 hours
- 2.5 SDCM, 85 CRI typical, 90+ CRI optional
- Fixtures are well located, covered ceiling
- Available with 10% dimming, 1% dimming, or dim to dark
- Balancing distribution with feathered edges provides even illumination on horizontal and vertical surfaces
- ENERGY STAR® certified product

**Distribution**

**Superior Performance**

Nominal Lumens	250	500	750	1000	1500	2000	2500	3000	3500
Drivers	271	573	868	1001	1527	1994	2580	3110	3612
Wattage	3.1	7.2	7.9	8.8	13.7	19.5	25.7	31.2	38.4
Lumens per Watt	87.4	79.6	102.3	113.8	111.5	102.3	100.4	99.7	94.1

**Coordinated Apertures | Multiple Layers of Light**

General Illumination Layer 1 EVO | High Center Beam Layer 1 Incto | EVO + Incto — Multiple Layers of Light

**Core**

**Healthcare**

**Special Applications**

EV04 page 1 of 8  
© 2014 ARCHITECTURAL DOWNLIGHTING | 1400 Lester Road, Cary, NC 27513 | P: 800-765-5278 (7278) | gothamlighting.com  
© 2014-2021 Acuity Brands Lighting Inc. All Rights Reserved. Rev. 06/15/21. Specifications subject to change without notice.

**gotham** | E V O<sup>+</sup> **4"** General Illumination Round Downlight

Luminaire Type: \_\_\_\_\_  
Catalog Number: \_\_\_\_\_

**EXAMPLE: EV04 3525 AR MWD LSS 120 E21**

Series	Color Temperature	Nominal Lumen Values	Reflector & Flange Color	Trim Style	Self-ranged	Distribution	Finish	Voltage
EV04	27° 2700K	82 250 lumens	AR Clear	FLAN	Self-ranged	MWD Medium wide (1.2 x 2.0)	LSS Semi-specular	120V
	35° 3500K	85 300 lumens	FR Pewter	FLAN	Flangeless	MWD Medium wide (1.2 x 2.0)	LS Specular	277V
	40° 4000K	10 1000 lumens	BR Gold			WD Wide (1.2 x 2.0)		347V
	50° 5000K	15 1500 lumens	WR White					
		20 2000 lumens	BR Black					
		25 2500 lumens	WR White					
		30 3000 lumens	WR White					
		35 3500 lumens	WR White					
		40 4000 lumens	WR White					
		45 4500 lumens	WR White					

**Ordering Information**

**EXAMPLE: EV04 3525 AR MWD LSS 120 E21**

**Ordering Notes**

- Not available with finishes.
- Not available with emergency battery pack options.
- Supplier with factory installed step down transformer.
- Refer to IEC62526 for compatible dimmers.
- Not available with HLIGHT and XPOINT options.
- Must specify voltage.
- For use with different reflector finish only (i.e. AR, FR, WR, GR options). Not applicable with WR (white reflector) or FL (flangeless) options.
- For use with different reflector finish only (i.e. AR, FR, WR, GR options). Not applicable with BR (black reflector) or FL (flangeless) options.
- 11" of plenum depth or top access required for battery pack maintenance.
- ER for use as UL924 Emergency Operation as power sense lead. Will require an emergency hot lead and normal hot lead. EM for use as UL924 Emergency Operation as power interrupt detection.
- Fixtures begin at 80% light level. Must be specified with NLT or NLTR. Only available with E21 and E21 drivers.
- Not available with ELR, HAO, EXA1, or EXAB options.
- Not available with DALI or DMX drivers. Not available with CP or NB0 options. Not recommended for metal ceiling installations.

EV04 page 2 of 8  
© 2014 ARCHITECTURAL DOWNLIGHTING | 1400 Lester Road, Cary, NC 27513 | P: 800-765-5278 (7278) | gothamlighting.com  
© 2014-2021 Acuity Brands Lighting Inc. All Rights Reserved. Rev. 06/15/21. Specifications subject to change without notice.

③ FIXTURE TYPES 'C'  
NO SCALE

**ANP Lighting** Specifications WDU514

Project: \_\_\_\_\_  
Fixture Type: \_\_\_\_\_  
Quantity: \_\_\_\_\_  
Customer: \_\_\_\_\_

**Specifications**

**Material:** Shade is 0.87" spun aluminum. Cast Aluminum hub and flat canopy.

**Finish:** A polyester powder coat high quality finish is electrostatically applied and baked at 450° for exceptional durability and color retention. Products undergo an intensive five-step cleaning and preparation process for maximum paint adhesion.

**Mounting:** Main grade finish provides superior salt, humidity and UV protection. This coating withstands up to 3000 hours of continuous salt spray testing with a 5-year warranty and is available in either a lensed or glass surface.

**Modifications:** Consult factory for custom or modified designs.

**Weight:** 3.9 lbs

**Dimensions:** 10 5/8" x 14"

**Ordering Information**

**EXAMPLE: WDU514 11 M012LD D N 40K E35UE12 13 GUP110 13**

**Ordering Notes**

- FINISHES
- LIGHT SOURCE & WATTAGES
- DIMMING
- DISTRIBUTION
- COLOR TEMPERATURE (CCT)
- ACCESSORIES

ANP Lighting. All rights reserved. These specifications are intended for general purposes only. ANP reserves the right to change material or design, without prior notice, in a continuing effort to upgrade its products.

② FIXTURE TYPES 'B'  
NO SCALE

**ODEN LED Specifications**

Project: \_\_\_\_\_  
Fixture Type: \_\_\_\_\_  
Quantity: \_\_\_\_\_  
Customer: \_\_\_\_\_

**Specifications**

**Material:** Shade is 0.87" spun aluminum. Cast Aluminum hub and flat canopy.

**Finish:** A polyester powder coat high quality finish is electrostatically applied and baked at 450° for exceptional durability and color retention. Products undergo an intensive five-step cleaning and preparation process for maximum paint adhesion.

**Mounting:** Main grade finish provides superior salt, humidity and UV protection. This coating withstands up to 3000 hours of continuous salt spray testing with a 5-year warranty and is available in either a lensed or glass surface.

**Modifications:** Consult factory for custom or modified designs.

**Weight:** 4.4 lbs

**Dimensions:** 11 1/2" x 16"

**Ordering Information**

**EXAMPLE: WDU516 10 M012LD D N 40K E35UE16 13 GUP110 13**

**Ordering Notes**

- FINISHES
- LIGHT SOURCE & WATTAGES
- DIMMING
- DISTRIBUTION
- COLOR TEMPERATURE (CCT)
- ACCESSORIES

ANP Lighting. All rights reserved. These specifications are intended for general purposes only. ANP reserves the right to change material or design, without prior notice, in a continuing effort to upgrade its products.

① FIXTURE TYPES 'A', 'A1', 'A1G' & 'AG'  
NO SCALE

**WAC** LANDSCAPE LIGHTING

**BALANCE SINGLE LED PATH LIGHT** 6061

Fixture Type: \_\_\_\_\_  
Catalog Number: \_\_\_\_\_  
Project: \_\_\_\_\_  
Location: \_\_\_\_\_

**Specifications**

Input: 9-15WAC (Transformer is required)  
Power: 6.5W/11.5VA  
CRI: 90  
Rated Life: 60,000 hours

**Features**

- IP66 rated, Protected against powerful water jets
- Factory sealed water tight fixtures
- Solid diecast corrosion resistant aluminum alloy
- Recommended spacing for installation: Residential 11 to 13ft; Commercial 7 to 9ft
- Mounting stake, 6 foot lead wire, and direct burial gelfilled wire nuts are included
- Maintains constant lumen output against voltage drop
- UL & cUL 1838 Listed

**Ordering Information**

**EXAMPLE: 6061-30BZ**

**Ordering Notes**

- FIXTURE TYPES 'H'

wacighting.com | Headquarters/Eastern Distribution Center | Central Distribution Center | Western Distribution Center

⑦ FIXTURE TYPES 'H'  
NO SCALE

**VCPG LED** Parking Garage

Fixture Type: \_\_\_\_\_  
Catalog Number: \_\_\_\_\_  
Project: \_\_\_\_\_  
Location: \_\_\_\_\_

**Specifications**

Diameter: 19"  
Height: 3.75"  
Weight: 18 lbs

**Introduction**

The all new VCPG LED Visually Comfortable Parking Garage luminaire is designed to bring glare control, optical performance and energy savings into one package. The recessed lens design of VCPG LED minimizes high angle glare, while its precision molded acrylic lens eliminates LED pavilion and delivers the required minimums, verticals and uniformity. The dedicated up-light module option reduces the contrast between the luminaire and the ceiling creating a more visually comfortable environment.

The VCPG LED delivers up to 87% in energy savings when replacing 170W metal halide luminaires. With over 100,000 hour life expectancy (12+ years of 24/7 continuous operation), the VCPG LED luminaire provides significant maintenance savings over traditional luminaires.

**Ordering Information**

**EXAMPLE: VCPG LED V4 P4 40K 70CRI TSM MVOLT SRM DNAXD**

**Ordering Notes**

- LENSE
- LIGHT SOURCE & WATTAGES
- DIMMING
- OPTICS

LITHANIA LIGHTING | One Lithonia Way • Conyers, Georgia 30012 • Phone: 800-765-5278 (7278) | www.lithania.com

⑥ FIXTURE TYPES 'G'  
NO SCALE

**ANP Lighting** Specifications BL7803

Project: \_\_\_\_\_  
Fixture Type: \_\_\_\_\_  
Quantity: \_\_\_\_\_  
Customer: \_\_\_\_\_

**Specifications**

**Material:** All parts are durable 356 cast aluminum and high strength extruded aluminum and spinings. All mounting hardware shall be stainless steel or zinc plated steel.

**Finish:** A polyester powder coat high quality finish is electrostatically applied and baked at 450° for exceptional durability and color retention. Products undergo an intensive five-step cleaning and preparation process for maximum paint adhesion.

**Mounting:** Main grade finish provides superior salt, humidity and UV protection. This coating withstands up to 3000 hours of continuous salt spray testing with a 5-year warranty and is available in either a lensed or glass surface.

**Modifications:** Consult factory for custom or modified designs.

**Weight:** 20.0 lb

**Dimensions:** 11" x 42"

**Ordering Information**

**EXAMPLE: BL7803 CL M016LD D N 40K E35UE16 13 GUP110 13**

**Ordering Notes**

- LENSE
- LIGHT SOURCE & WATTAGES
- DIMMING
- OPTICS

ANP Lighting. All rights reserved. These specifications are intended for general purposes only. ANP reserves the right to change material or design, without prior notice, in a continuing effort to upgrade its products.

④ FIXTURE TYPES 'E'  
NO SCALE

**ANP Lighting** Specifications WDU516

Project: \_\_\_\_\_  
Fixture Type: \_\_\_\_\_  
Quantity: \_\_\_\_\_  
Customer: \_\_\_\_\_

**Specifications**

**Material:** Shade is 0.87" spun aluminum. Cast Aluminum hub and flat canopy.

**Finish:** A polyester powder coat high quality finish is electrostatically applied and baked at 450° for exceptional durability and color retention. Products undergo an intensive five-step cleaning and preparation process for maximum paint adhesion.

**Mounting:** Main grade finish provides superior salt, humidity and UV protection. This coating withstands up to 3000 hours of continuous salt spray testing with a 5-year warranty and is available in either a lensed or glass surface.

**Modifications:** Consult factory for custom or modified designs.

**Weight:** 4.4 lbs

**Dimensions:** 11 1/2" x 16"

**Ordering Information**

**EXAMPLE: WDU516 10 M012LD D N 40K E35UE16 13 GUP110 13**

**Ordering Notes**

- FINISHES
- LIGHT SOURCE & WATTAGES
- DIMMING
- DISTRIBUTION
- COLOR TEMPERATURE (CCT)
- ACCESSORIES

ANP Lighting. All rights reserved. These specifications are intended for general purposes only. ANP reserves the right to change material or design, without prior notice, in a continuing effort to upgrade its products.

⑤ FIXTURE TYPES 'D'  
NO SCALE

**VOLTA**  
1730 E. Northern Avenue, Ste. 120, Phoenix, AZ 85020  
Tel. (480) 659-0511, VoltaUS.com

PRELIMINARY  
NOT FOR CONSTRUCTION  
OR RECORDING

THE VILLAGE  
AT SADDLEROCK CROSSING  
SOLDIERS PASS ROAD & HIGHWAY 89A  
SEDONA, ARIZONA

REVISIONS	DATE	BY	DESCRIPTION
1	09/30/21	ETS	ISSUED FOR PERMIT
2	04/20/21	ETS	

CITY COMMENTS

PROJECT # 811203.00  
SCALE: AS NOTED  
CHECKED BY: WB  
DRAWN BY: ETS  
DATE: 04/20/21

SITE LIGHTING  
CUTSHEETS  
E 1.3