



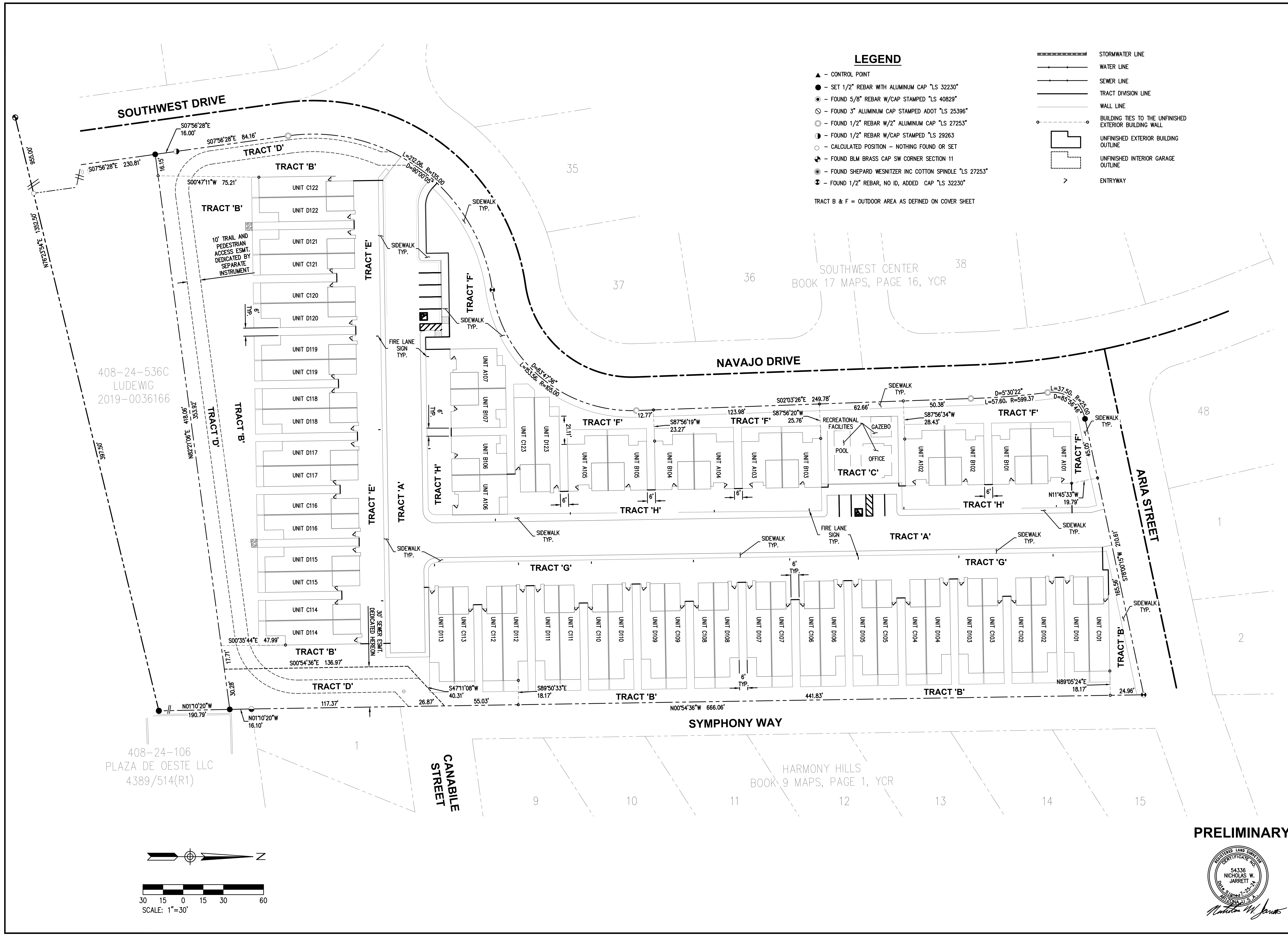
**LANDCOR CONSULTING**

**NAVAJO LOFTS  
 PRELIMINARY CONDOMINIUM PLAT**

10 NAVAJO DRIVE  
 SEDONA, ARIZONA

REVISIONS:	DATE:

BOUNDARY, EASEMENTS & HARDSCAPE
DATE: 07/25/24
PROJ. #: 1763
SHEET 2 OF 5



**LEGEND**

- ▲ - CONTROL POINT
  - - SET 1/2" REBAR WITH ALUMINUM CAP "LS 32230"
  - ⊙ - FOUND 5/8" REBAR W/CAP STAMPED "LS 40829"
  - ⊙ - FOUND 3" ALUMINUM CAP STAMPED ADOT "LS 25396"
  - ⊙ - FOUND 1/2" REBAR W/2" ALUMINUM CAP "LS 27253"
  - ⊙ - FOUND 1/2" REBAR W/CAP STAMPED "LS 29263"
  - - CALCULATED POSITION - NOTHING FOUND OR SET
  - ⊙ - FOUND BLM BRASS CAP SW CORNER SECTION 11
  - ⊙ - FOUND SHEPARD WESNITZER INC COTTON SPINDLE "LS 27253"
  - ⊙ - FOUND 1/2" REBAR, NO ID, ADDED CAP "LS 32230"
- TRACT B & F = OUTDOOR AREA AS DEFINED ON COVER SHEET

- STORMWATER LINE
- WATER LINE
- SEWER LINE
- TRACT DIVISION LINE
- WALL LINE
- BUILDING TIES TO THE UNFINISHED EXTERIOR BUILDING WALL
- UNFINISHED EXTERIOR BUILDING OUTLINE
- UNFINISHED INTERIOR GARAGE OUTLINE
- > ENTRYWAY

408-24-536C  
 LUDEWIG  
 2019-0036166

408-24-106  
 PLAZA DE OESTE LLC  
 4389/514(R1)

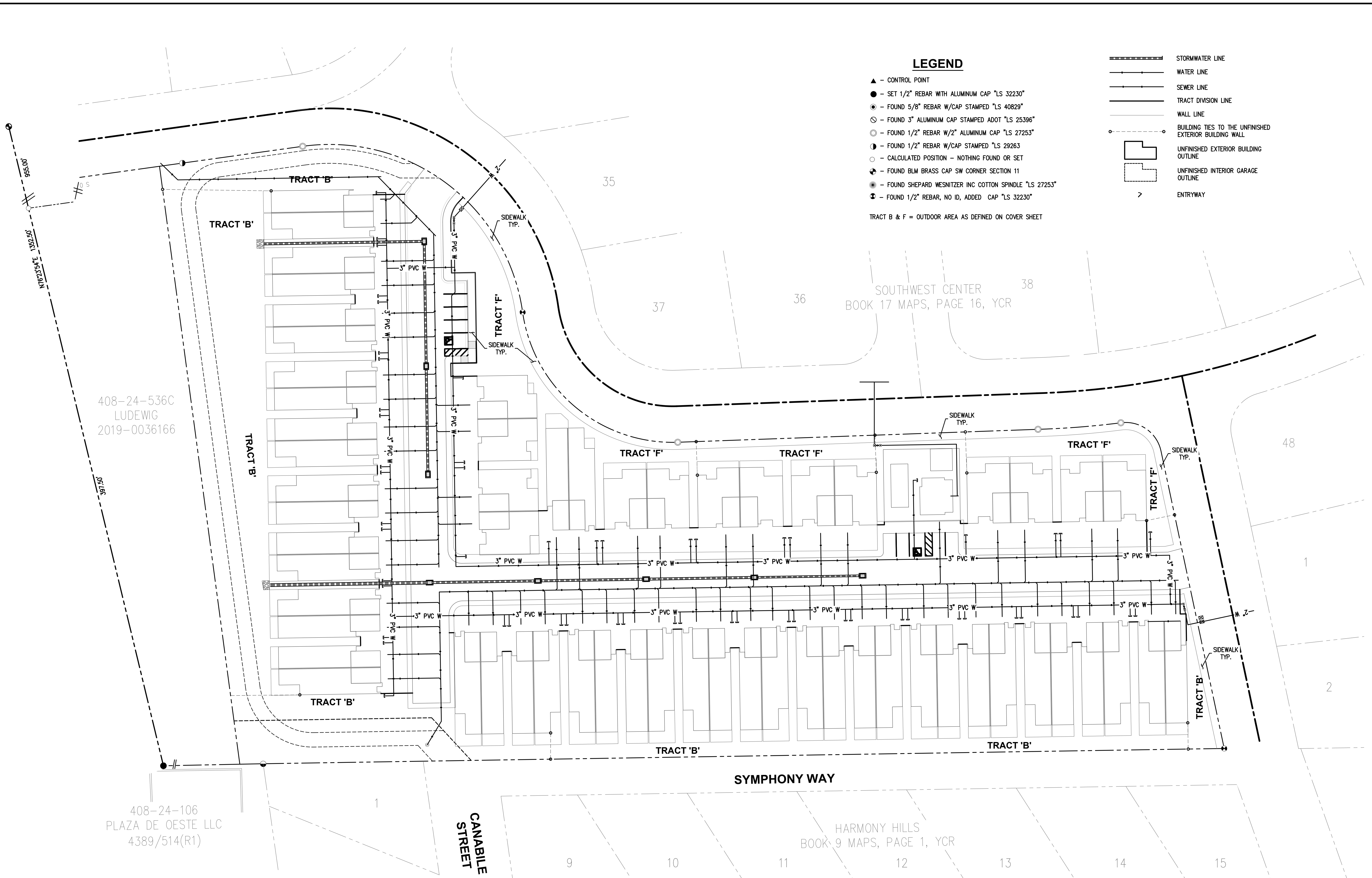
SOUTHWEST CENTER  
 BOOK 17 MAPS, PAGE 16, YCR

HARMONY HILLS  
 BOOK 9 MAPS, PAGE 1, YCR

**PRELIMINARY**



*Nicholas W. Jarrett*



**LEGEND**

- ▲ - CONTROL POINT
- - SET 1/2" REBAR WITH ALUMINUM CAP "LS 32230"
- ⊙ - FOUND 5/8" REBAR W/CAP STAMPED "LS 40829"
- ⊙ - FOUND 3" ALUMINUM CAP STAMPED ADOT "LS 25396"
- ⊙ - FOUND 1/2" REBAR W/2" ALUMINUM CAP "LS 27253"
- ⊙ - FOUND 1/2" REBAR W/CAP STAMPED "LS 29263"
- - CALCULATED POSITION - NOTHING FOUND OR SET
- ⊙ - FOUND BLM BRASS CAP SW CORNER SECTION 11
- ⊙ - FOUND SHEPARD WESNITZER INC COTTON SPINDLE "LS 27253"
- ⊙ - FOUND 1/2" REBAR, NO ID, ADDED CAP "LS 32230"

- STORMWATER LINE
- WATER LINE
- SEWER LINE
- TRACT DIVISION LINE
- WALL LINE
- - BUILDING TIES TO THE UNFINISHED EXTERIOR BUILDING WALL
- - UNFINISHED EXTERIOR BUILDING OUTLINE
- - UNFINISHED INTERIOR GARAGE OUTLINE
- > - ENTRYWAY

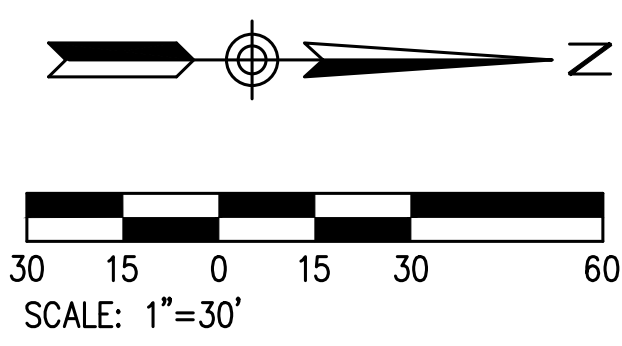
TRACT B & F = OUTDOOR AREA AS DEFINED ON COVER SHEET

SOUTHWEST CENTER  
BOOK 17 MAPS, PAGE 16, YCR

HARMONY HILLS  
BOOK 9 MAPS, PAGE 1, YCR

408-24-536C  
LUDEWIG  
2019-0036166

408-24-106  
PLAZA DE OESTE LLC  
4389/514(R1)



**PRELIMINARY**



DATE:	
REVISIONS:	

INDIVIDUAL UTILITIES
DATE: 07/25/24
PROJ. #: 1763
SHEET 3 OF 5

**NAVAJO LOFTS**  
**PRELIMINARY CONDOMINIUM PLAT**  
 10 NAVAJO DRIVE  
 SEDONA, ARIZONA

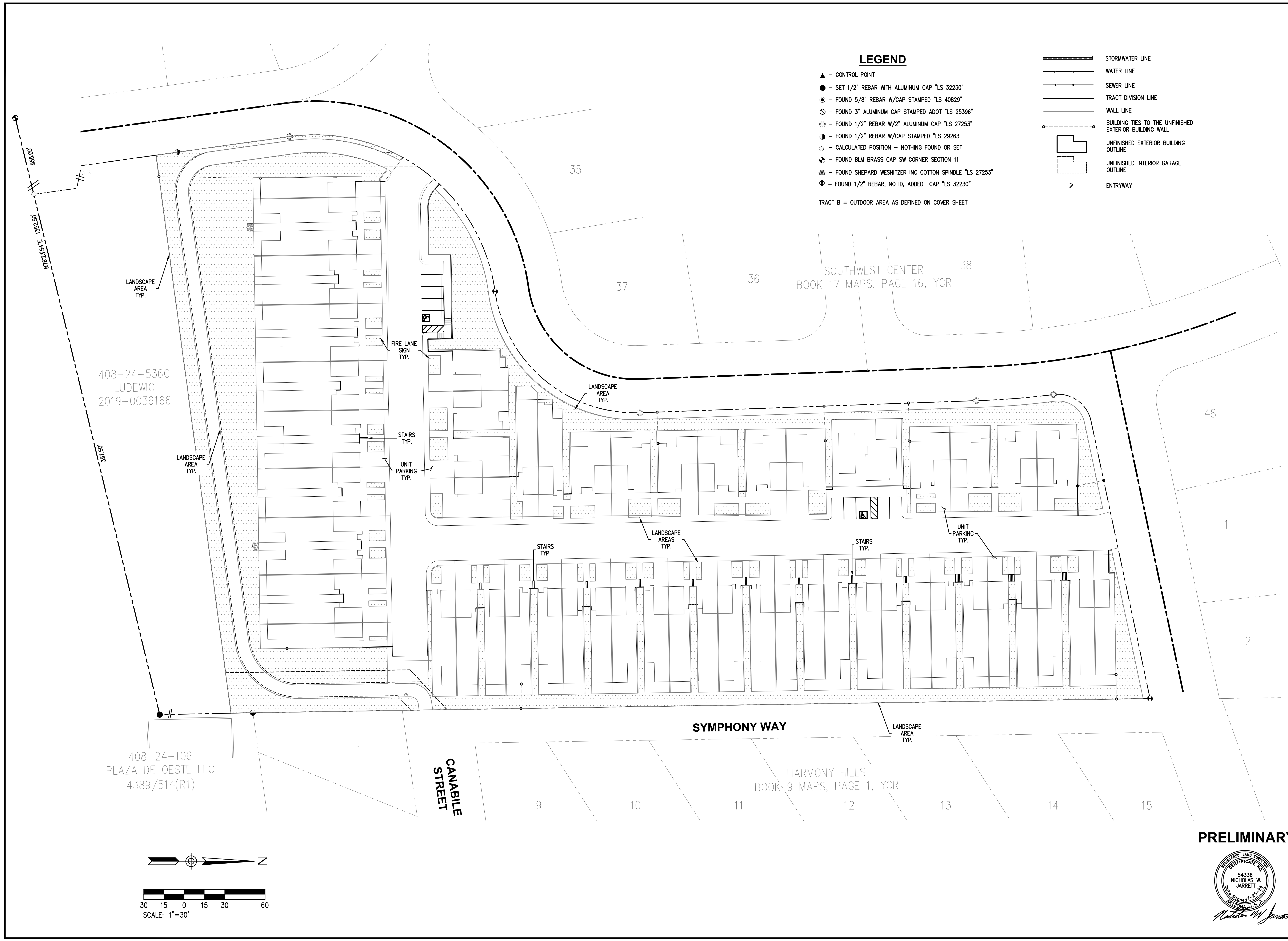
DATE:	
REVISIONS:	

LANDSCAPE AREAS & UNIT PARKING
DATE: 07/25/24
PROJ. #: 1763
SHEET 4 OF 5

**LEGEND**

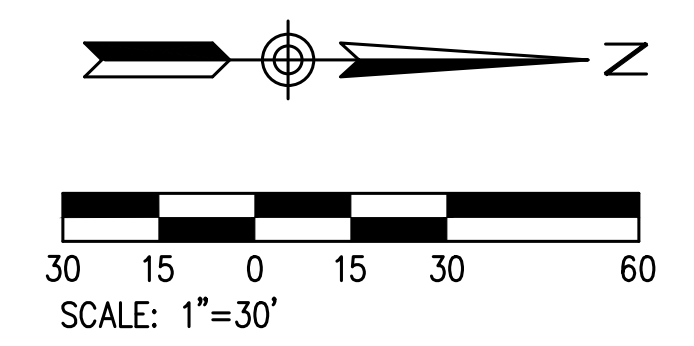
- ▲ - CONTROL POINT
  - - SET 1/2" REBAR WITH ALUMINUM CAP "LS 32230"
  - ⊙ - FOUND 5/8" REBAR W/CAP STAMPED "LS 40829"
  - ⊙ - FOUND 3" ALUMINUM CAP STAMPED ADOT "LS 25396"
  - ⊙ - FOUND 1/2" REBAR W/2" ALUMINUM CAP "LS 27253"
  - ⊙ - FOUND 1/2" REBAR W/CAP STAMPED "LS 29263"
  - - CALCULATED POSITION - NOTHING FOUND OR SET
  - ⊙ - FOUND BLM BRASS CAP SW CORNER SECTION 11
  - ⊙ - FOUND SHEPARD WESNITZER INC COTTON SPINDLE "LS 27253"
  - ⊙ - FOUND 1/2" REBAR, NO ID, ADDED CAP "LS 32230"
- TRACT B = OUTDOOR AREA AS DEFINED ON COVER SHEET

- STORMWATER LINE
- WATER LINE
- SEWER LINE
- TRACT DIVISION LINE
- WALL LINE
- BUILDING TIES TO THE UNFINISHED EXTERIOR BUILDING WALL
- UNFINISHED EXTERIOR BUILDING OUTLINE
- UNFINISHED INTERIOR GARAGE OUTLINE
- > ENTRYWAY



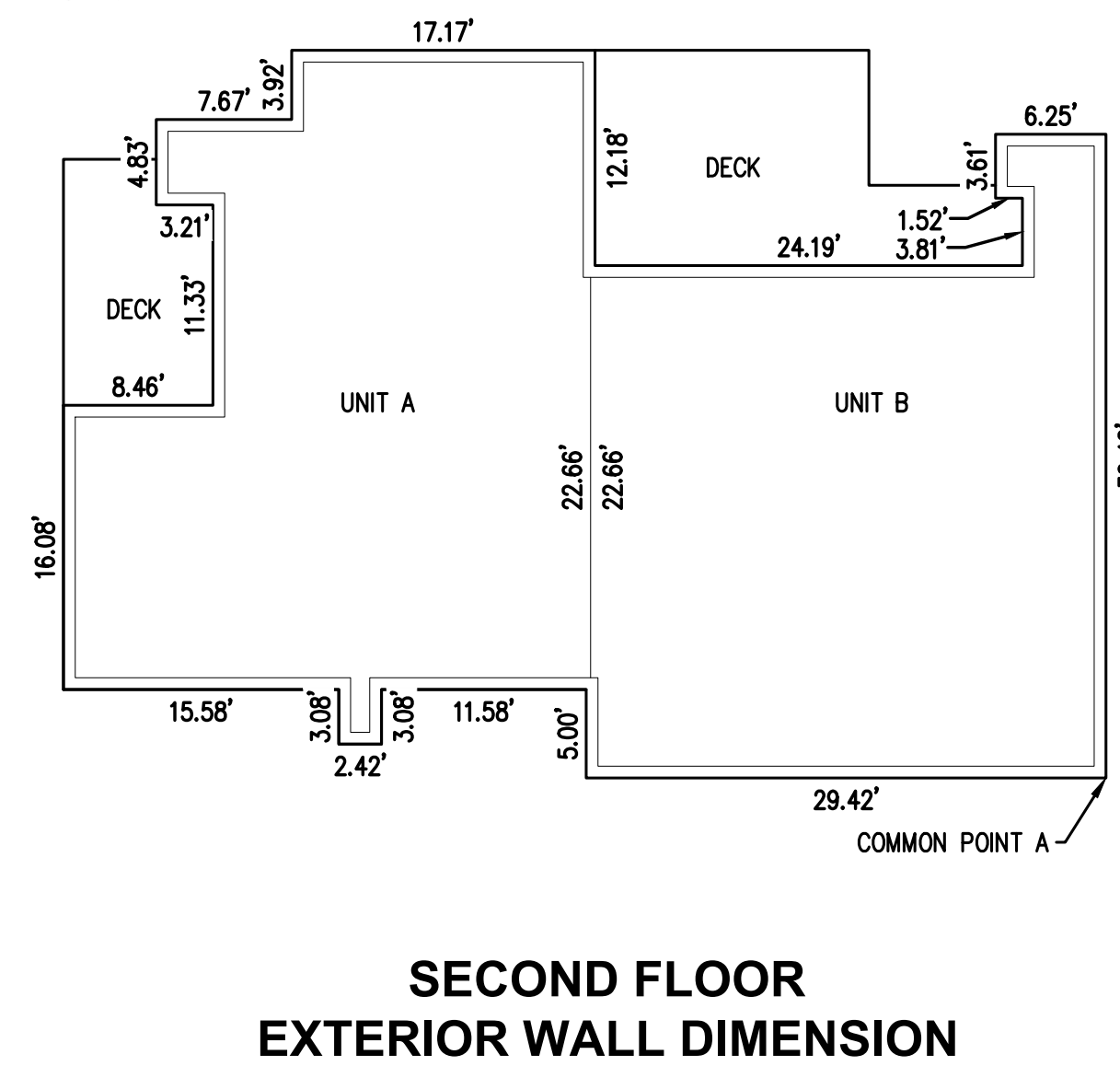
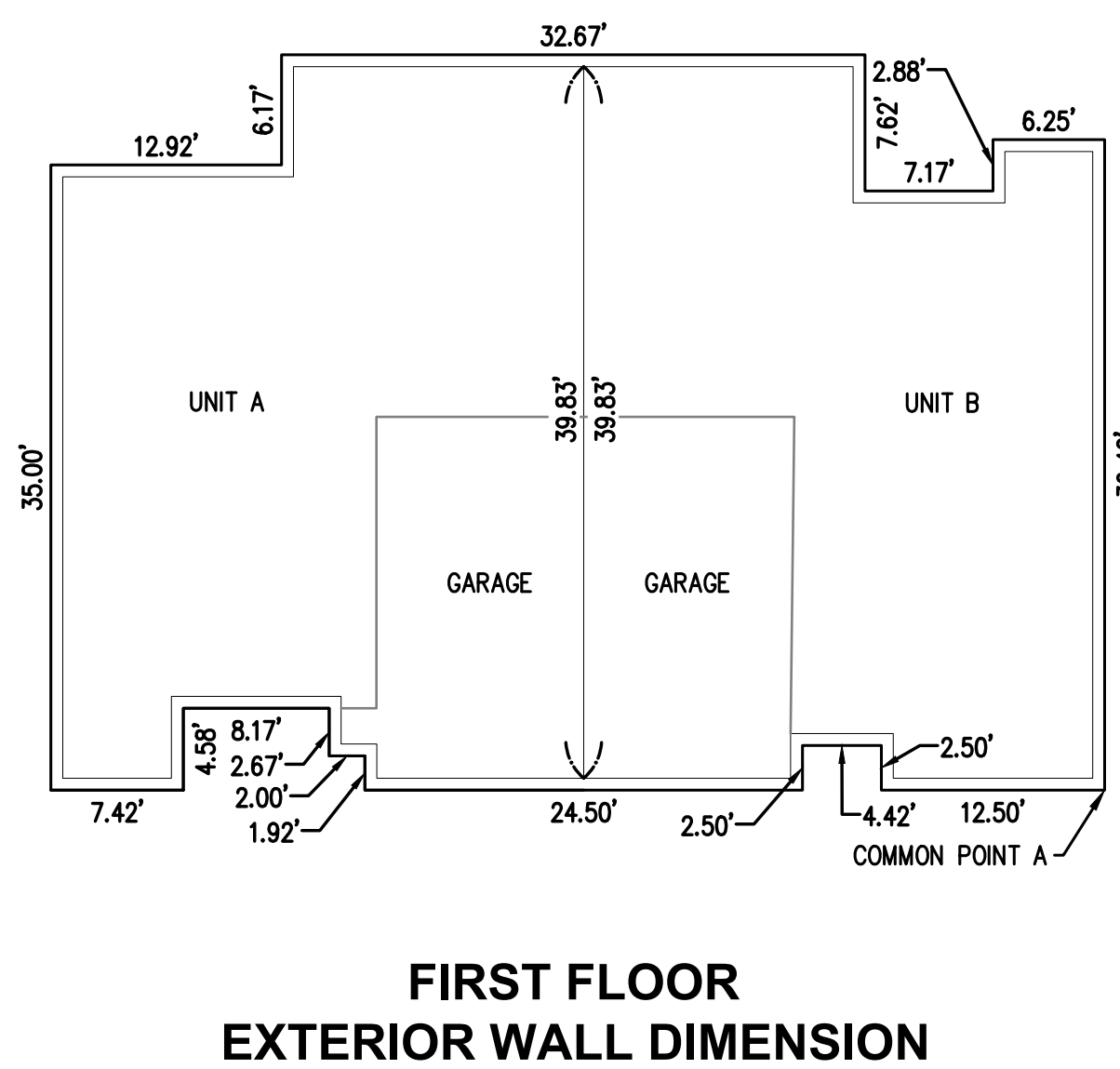
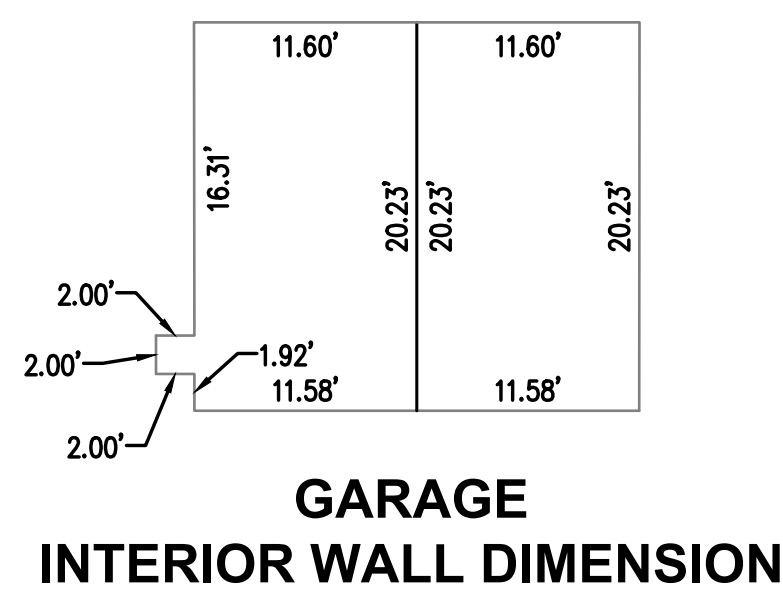
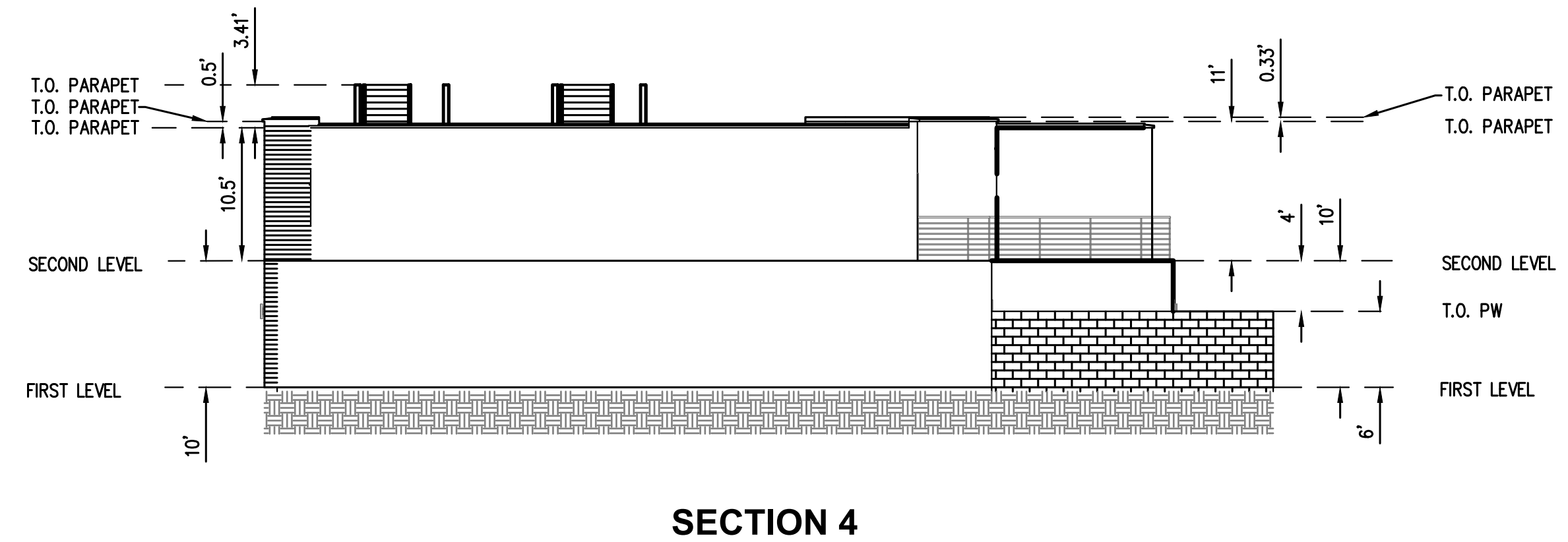
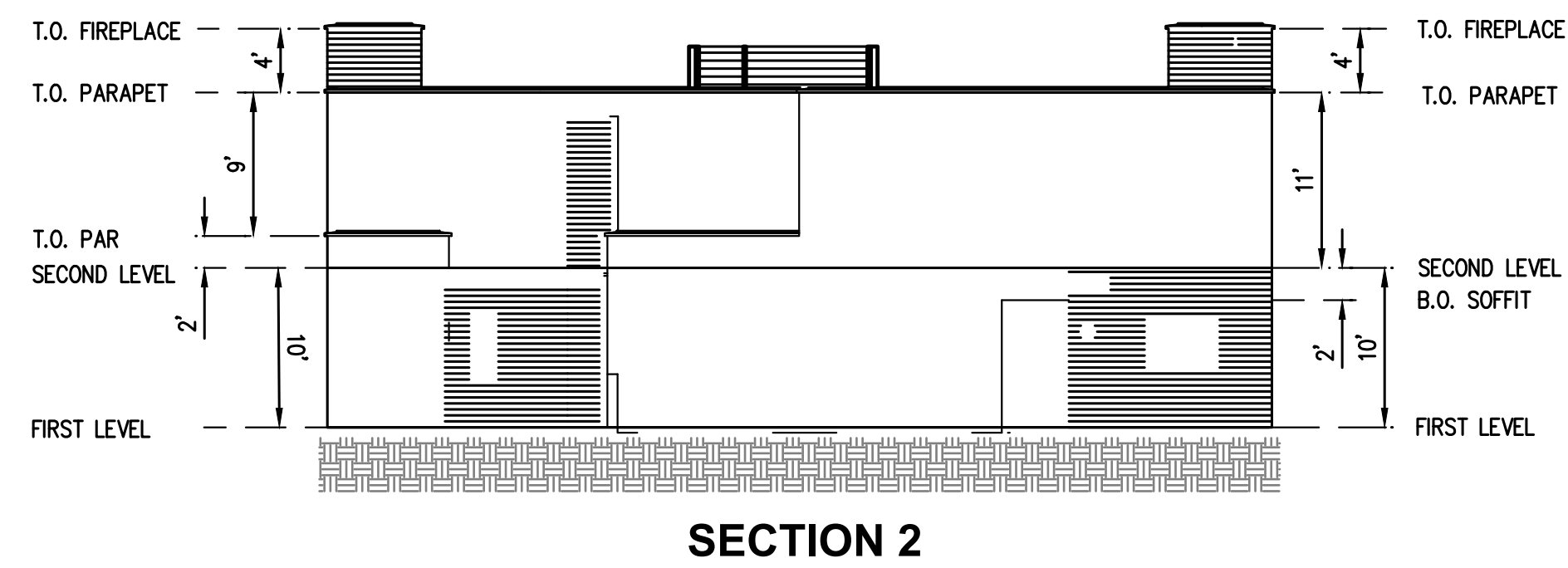
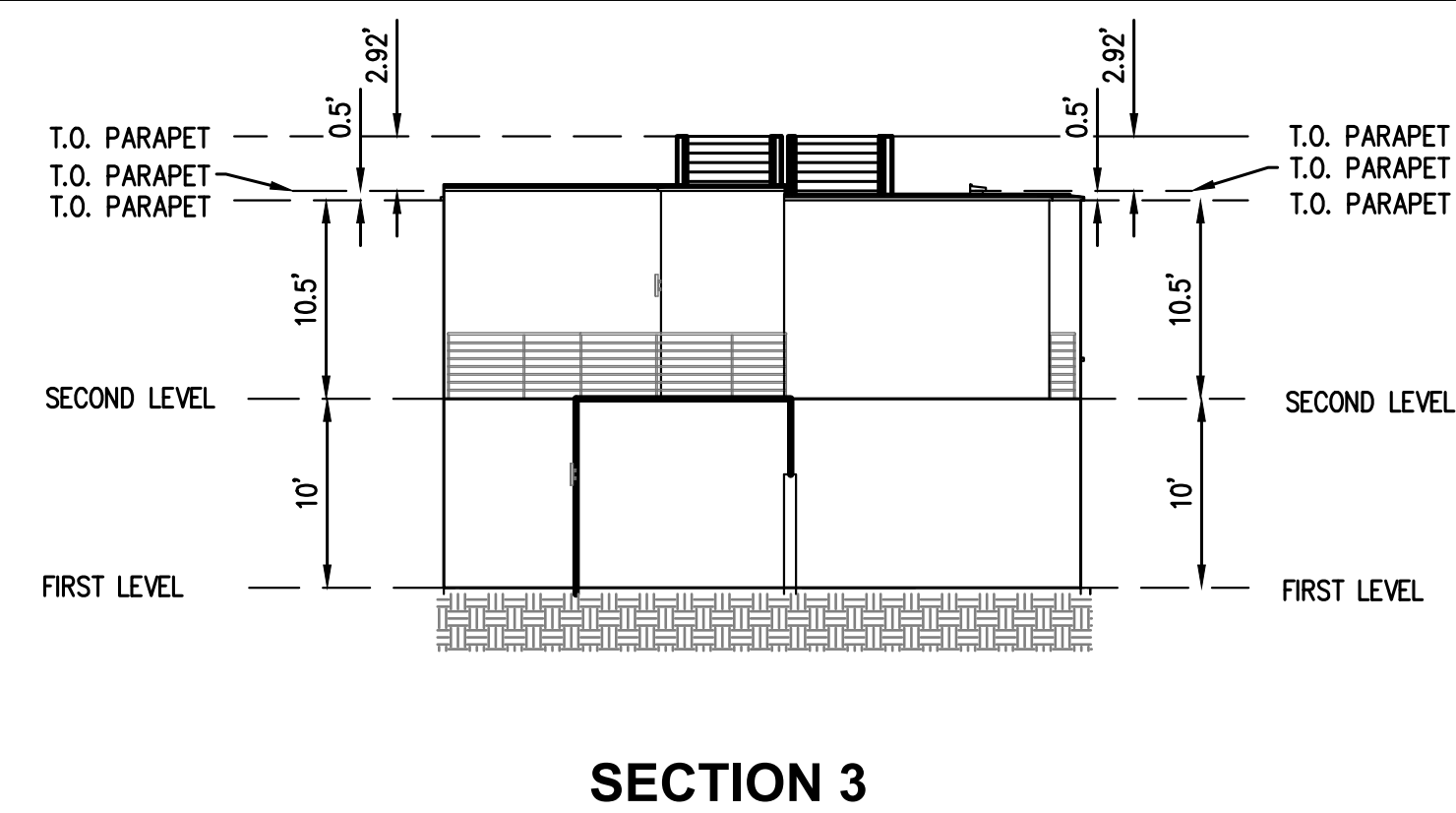
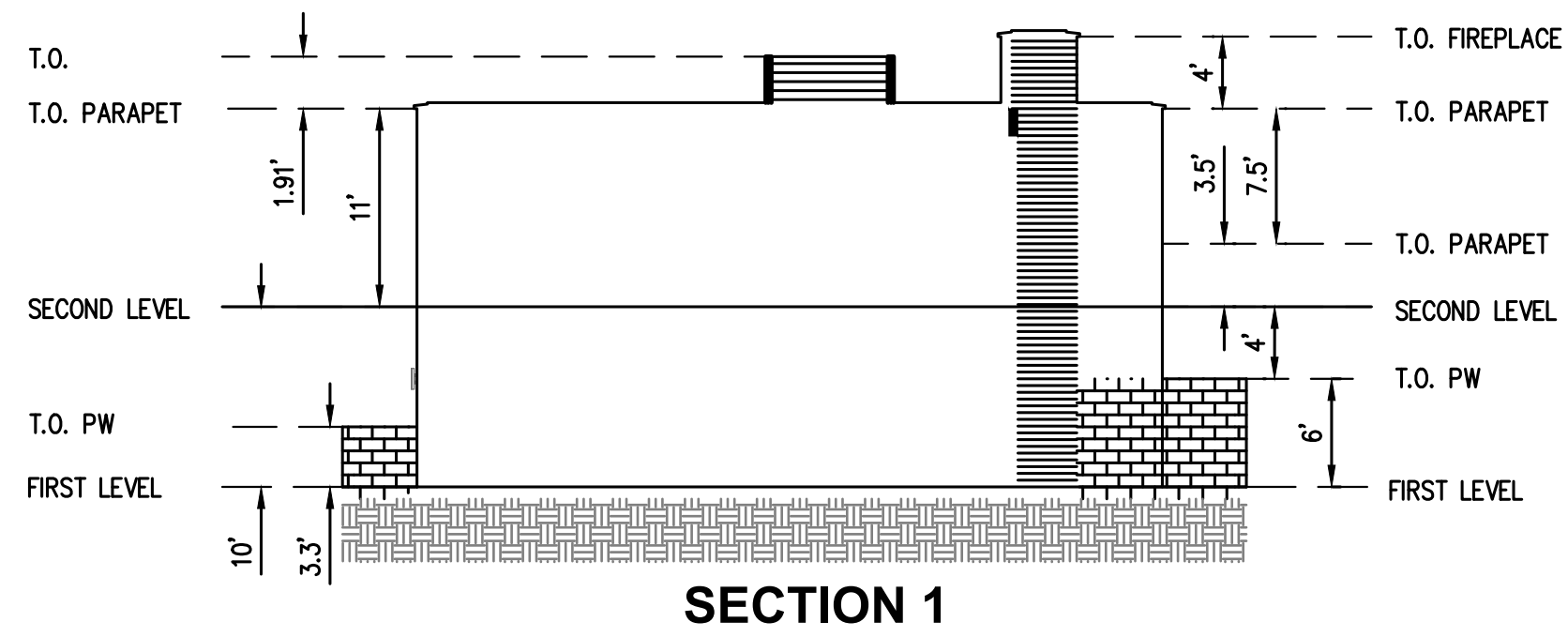
408-24-536C  
 LUDEWIG  
 2019-0036166

408-24-106  
 PLAZA DE OESTE LLC  
 4389/514(R1)

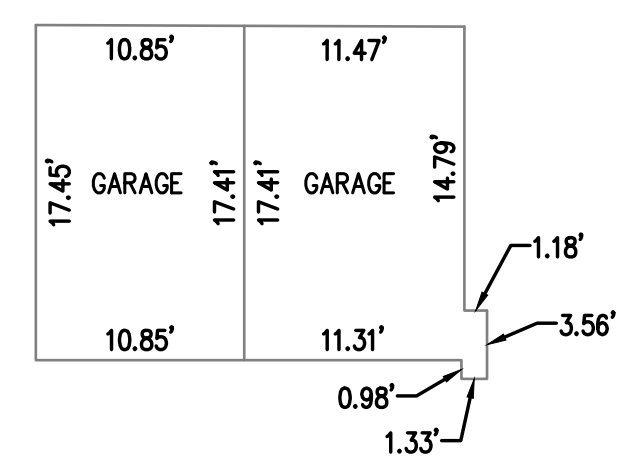
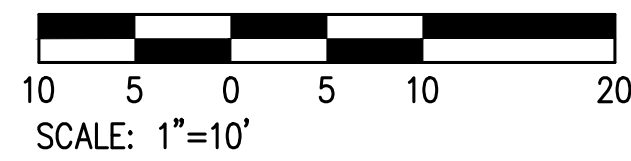


**PRELIMINARY**

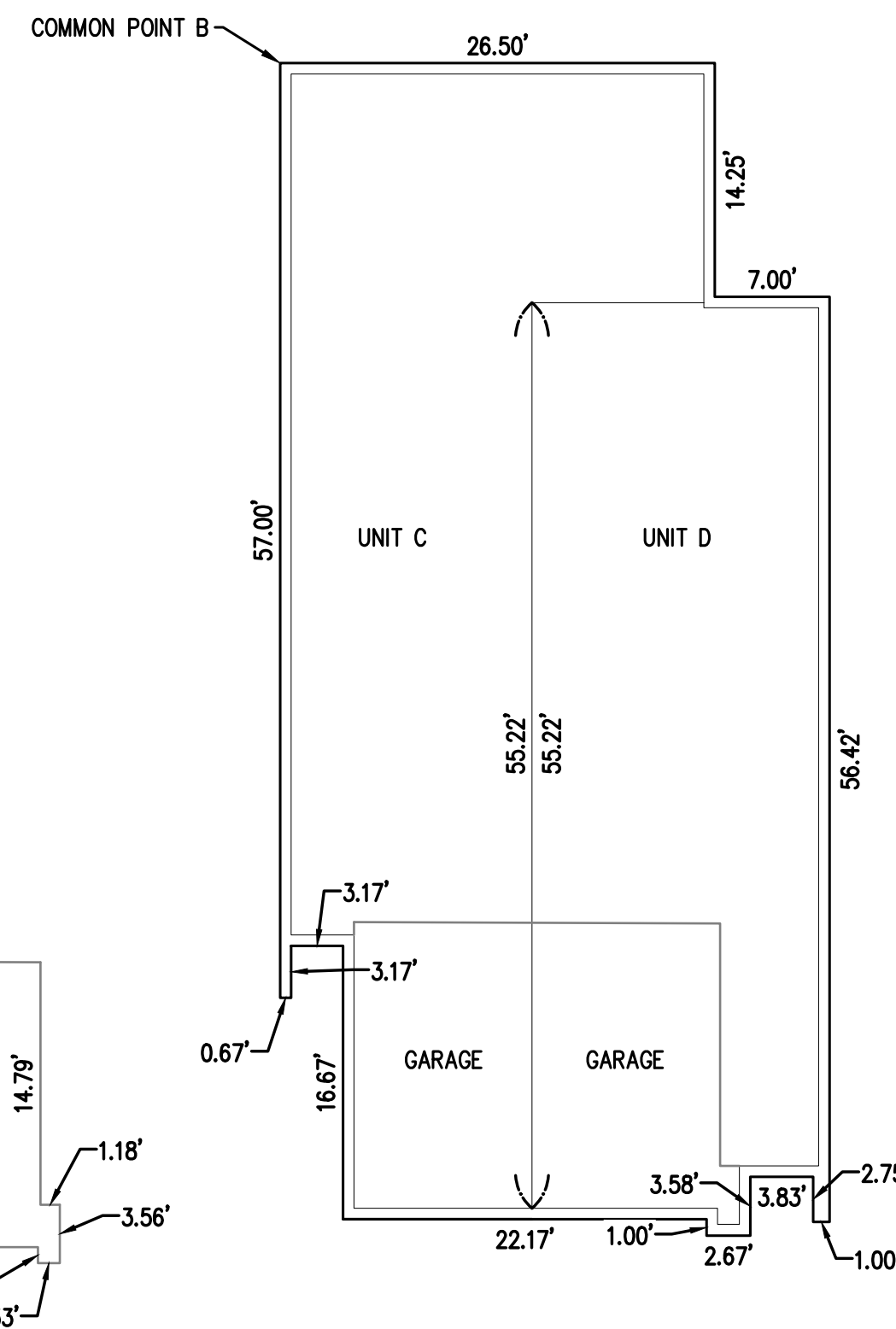
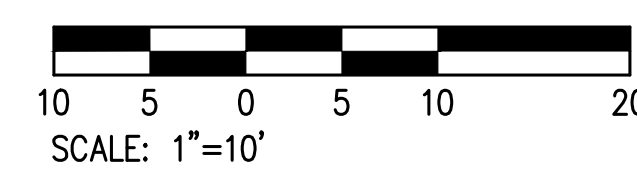




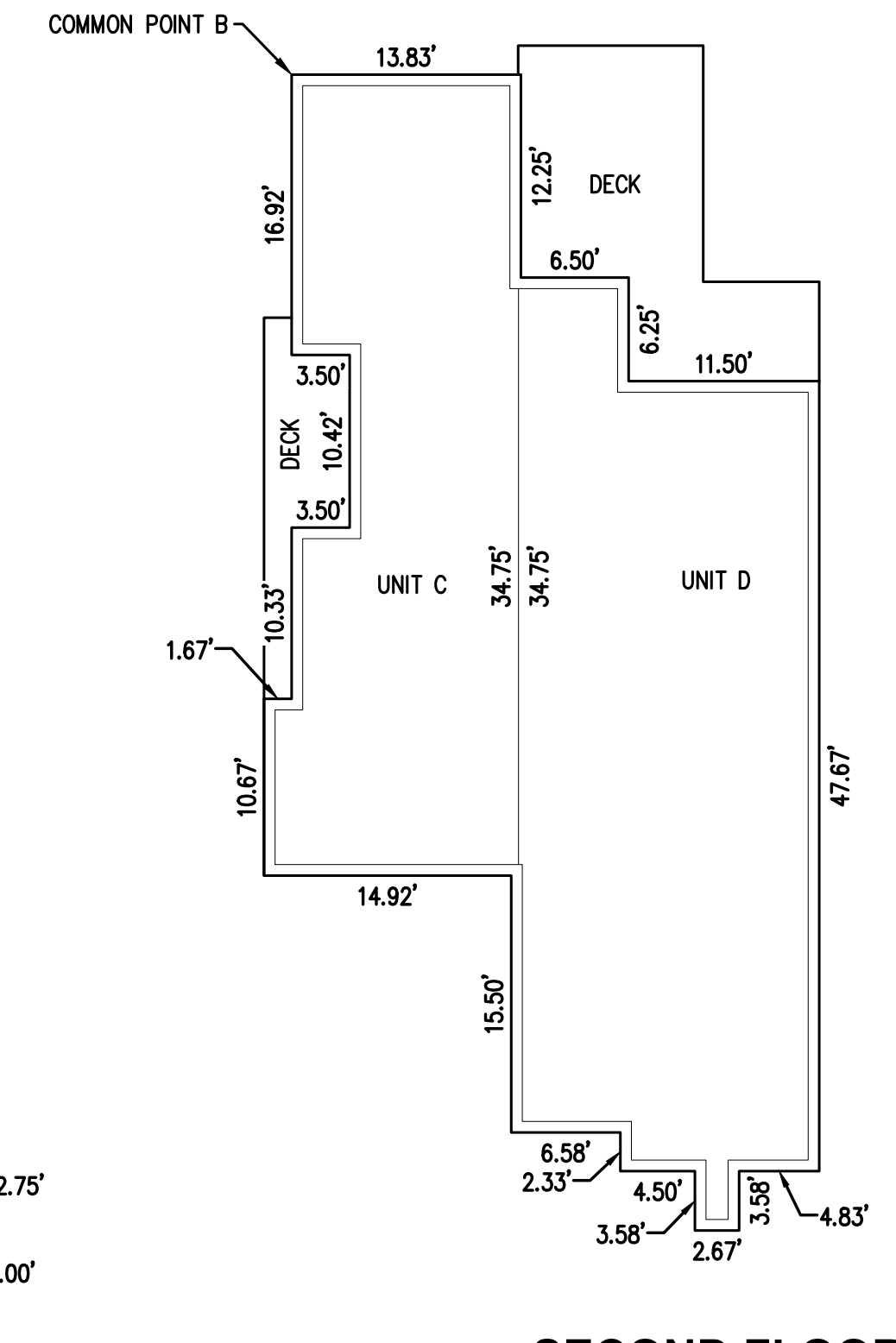
UNITS A & B



GARAGE  
INTERIOR WALL DIMENSION



FIRST FLOOR  
EXTERIOR WALL DIMENSION



SECOND FLOOR  
EXTERIOR WALL DIMENSION

UNITS C & D

PRELIMINARY



DATE:	
REVISIONS:	
DWELLING DIMENSIONS & DETAILS	
DATE: 07/25/24	
PROJ. #: 1763	
SHEET	5 OF 5